



TECHNICAL INFORMATION

Input Power:	AC:220-240V,50Hz
Unit Color:	Black
Body Type:	PC
Dimension:	91x150x228mm

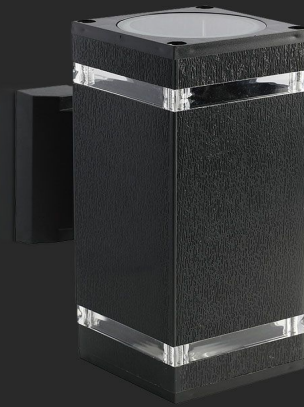
E27 WALL FITTINGS | LED LIGHTING

V-TAC's LED Lighting range includes lighting that fulfills the needs of various end-users and industries, offering efficient and innovative products that provide modern solutions at an affordable price. We are proud to also provide an extended multi-year warranty on our products, as well as detailed support.

One brand, endless solutions..

SKU: 93574 - Black

[View more details](#)



PC BODY
BLACK COLOR FINISH

Compatible with any
standard **G45** lamp
**Lamps are not included*



FEATURES

- Elegant Black colour finish
- Sturdy and durable PC build
- Compatible with 2xE27 Lamps (*Lamp not included)
- Suitable for installation
- Applications - Hotels, residential, restaurants, commercial lighting etc.

PACKAGING

Gross Weight (Kgs):	0.83
Unit CBM:	0.004486
Dimension:	91x150x228mm

MASTER BOX PACKAGING

Box Qty:	10
Length (Box) mm:	165
Width (Box) mm:	95
Height (Box) mm:	240

LISTING DETAILS

Ean Code: 3800157683050