



#### TECHNICAL INFORMATION

Input Power:	AC:220-240V,50Hz
Unit Color:	Black
Body Type:	PC
Dimension:	130x100x228mm

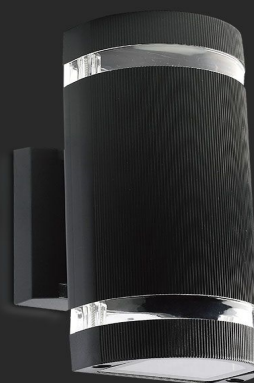
#### E27 WALL FITTINGS | LED LIGHTING

V-TAC's LED Lighting range includes lighting that fulfills the needs of various end-users and industries, offering efficient and innovative products that provide modern solutions at an affordable price. We are proud to also provide an extended multi-year warranty on our products, as well as detailed support.

*One brand, endless solutions..*

SKU: 93573 - Black

[View more details](#)



**PC BODY**  
BLACK COLOR FINISH

Compatible with any  
standard **G45** lamp  
*\*Lamps are not included*



#### FEATURES

- Elegant Black colour finish
- Sturdy and durable PC build
- Compatible with 2xE27 Lamps (\*Lamp not included)
- Suitable for installation
- Applications - Hotels, residential, restaurants, commercial lighting etc.

#### PACKAGING

Gross Weight (Kgs):	0.66
Unit CBM:	0.00436
Dimension:	130x100x228mm

#### MASTER BOX PACKAGING

Box Qty:	10
Length (Box) mm:	135
Width (Box) mm:	115
Height (Box) mm:	235

#### LISTING DETAILS

Ean Code: 3800157683043