



TECHNICAL INFORMATION

Shape:	Square
Input Power:	AC:220-240V, 50Hz
Unit Color:	White
Body Type:	Ferrum
Cutting Size:	70x70mm
Rated Load:	Max 35W
Dimension:	82x82x27mm

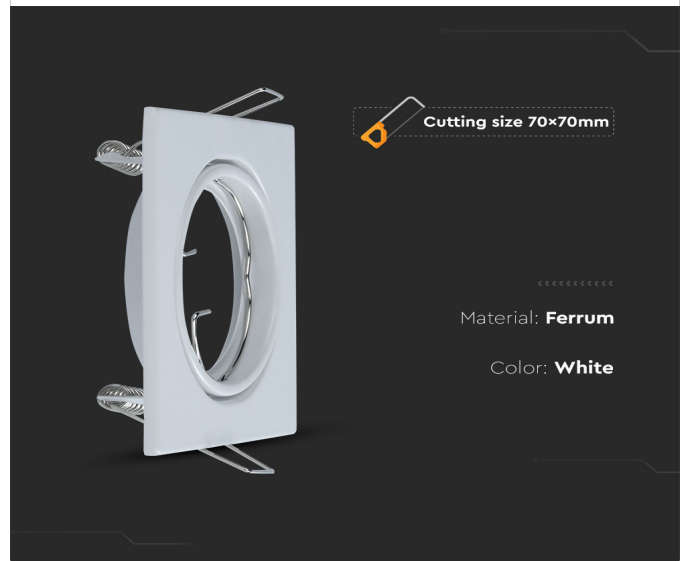
RECESSED FITTING GU10 | LED LIGHTING

V-TAC's LED Lighting range includes lighting that fulfills the needs of various end-users and industries, offering efficient and innovative products that provide modern solutions at an affordable price. We are proud to also provide extended multi-year warranty on our products, as well as detailed support.

One brand, endless solutions..

SKU: 8941 - 940

[View more details](#)



FEATURES

- Elegant White colour finish
- Sturdy and durable Ferrum build
- Compatible with GU10 Lamps (*Lamp not included)
- Suitable for Recessed installation
- Tiltable
- Applications - Hotels, residential, restaurants, commercial lighting etc.

PACKAGING

Gross Weight (Kgs): 0.06
Unit CBM: 0.000366
Dimension: 82x82x27mm

MASTER BOX PACKAGING

Box Qty: 100
Length (Box) mm: 100
Width (Box) mm: 60
Height (Box) mm: 100

LISTING DETAILS

Commodity Code: 9405990090
EanCode: 3800157657945