



### TECHNICAL INFORMATION

Watts:	10
Lumens:	450
Input Power:	AC:100-240V, 50/60Hz
Long Life:	20,000 Hours
Unit Color:	White
Body Type:	Aluminium
PF:	>0.5
LED Chip Type:	COB-CREE
CRI:	>80
Operation Temperature:	-20°C to +45°C
Dimmable:	No
Beam Angle:	72°
Color:	6400K
Dimension:	108x800mm

### BOLLARD LIGHTS 80CM

V-TAC's LED Lighting range includes lighting that fulfills the needs of various end-users and industries, offering efficient and innovative products that provide modern solutions at an affordable price. We are proud to also provide extended multi-year warranty on our products, as well as detailed support.

*One brand, endless solutions..*

SKU: 8327 - 930 940

[View more details](#)

### SPECIAL FEATURES



80%  
ENERGY  
SAVING

Body Type: Aluminium

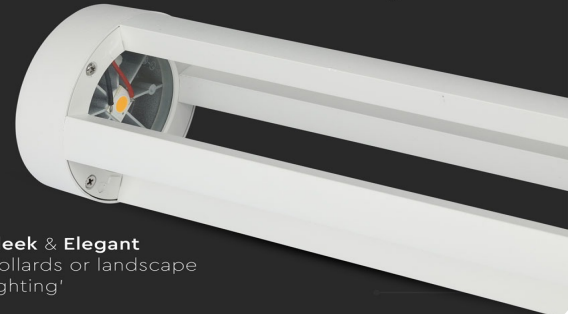
Color of Fixture : White

Luminous Flux : 450lm

Sensor Compatible : Yes

CRI>80

72° Beam Angle



**Sleek & Elegant**  
bollards or landscape  
lighting'



### FEATURES

- Bollard light perfectly designed for outdoor application
- Strong and robust Aluminium built
- Elegant White finish
- IP65 ingress protection
- Application - pathways, patio, garden, backyard etc

CE/EMC

CE/LVD



### PACKAGING

Gross Weight (Kgs): 2.39

Unit CBM: 0.02754

Dimension: 108x800mm

### MASTER BOX PACKAGING

Box Qty: 4

Qty Per Pallet: 48

Length (Box) mm: 180

Width (Box) mm: 180

Height (Box) mm: 850

### LISTING DETAILS

Commodity Code: 9405403990

EanCode: 3800157632386