



TECHNICAL INFORMATION

Shape:	Square
Input Power:	AC:220-240V,50Hz
Unit Color:	White
Body Type:	Iron
Dimension:	100x100x120mm

SURFACE FITTINGS GU10 | LED LIGHTING

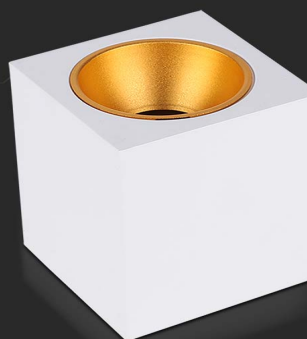
V-TAC's LED Lighting range includes lighting that fulfills the needs of various end-users and industries, offering efficient and innovative products that provide modern solutions at an affordable price. We are proud to also provide an extended multi-year warranty on our products, as well as detailed support.

One brand, endless solutions..

SKU: 6692 - White

[View more details](#)

SURFACE SPOTLIGHT FITTING



Compatible with any standard **GU10** lamp

*Lamp not included

IP20
RATING



FEATURES

- Elegant White colour finish
- Sturdy and durable Iron build
- Compatible with GU10 Lamps (*Lamp not included)
- Suitable for Surfaced installation
- Applications - Hotels, residential, restaurants, commercial lighting etc.

PACKAGING

Gross Weight (Kgs):	0.78
Unit CBM:	0.0017
Dimension:	100x100x120mm

MASTER BOX PACKAGING

Box Qty:	20
Length (Box) mm:	105
Width (Box) mm:	105
Height (Box) mm:	130

LISTING DETAILS

Ean Code: 3800157679947