



TECHNICAL INFORMATION

Input Power:	AC:220-240V, 50Hz
Unit Color:	Stainless Steel
Body Type:	Stainless Steel
Rated Load:	Max 2x35W
Dimension:	60x110x215mm
Sensor Type:	PIR
Detection Distance:	Max 2-8M
Detection Angle:	90°
Time Delay:	10sec±5sec to 4min±1min

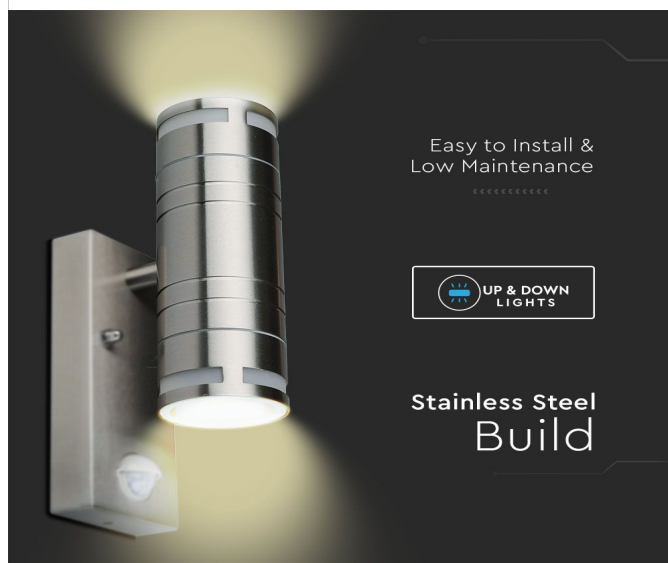
GU10 UP DOWN FITTINGS | LED LIGHTING

V-TAC's LED Lighting range includes lighting that fulfills the needs of various end-users and industries, offering efficient and innovative products that provide modern solutions at an affordable price. We are proud to also provide an extended multi-year warranty on our products, as well as detailed support.

One brand, endless solutions..

SKU: 5157 - 1256

[View more details](#)



FEATURES

- Perfect replacement for traditional wall fittings
- Designed with PIR Sensor
- Strong and sturdy Stainless Steel body
- Compatible with 2XGU10 holder type (Fitting only - light not included)
- Elegant Stainless Steel colour finish
- Suitable for pathways, stairways, corridors, walkways etc.

PACKAGING

Gross Weight (Kgs):	0.62
Unit CBM:	0.0016
Dimension:	60x110x215mm

MASTER BOX PACKAGING

Box Qty:	12
Length (Box) mm:	115
Width (Box) mm:	75
Height (Box) mm:	235

LISTING DETAILS

Ean Code: 3800157661812