



TECHNICAL INFORMATION

Watts:	1
Lumens:	100
Input Power:	DC:12V
Long Life:	20,000 Hours
Body Type:	ABS + Aluminium Plate
LED Chip Type:	SMD
CRI:	>75
Operation Temperature:	-25°C to +50°C
Dimmable:	No
Beam Angle:	160°
Color:	Green
Dimension:	53x12x4.6mm

MODULES 2835 3 IP67

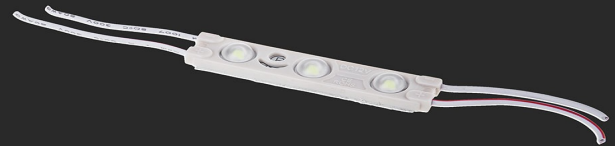
V-TAC's LED Lighting range includes lighting that fulfills the needs of various end-users and industries, offering efficient and innovative products that provide modern solutions at an affordable price. We are proud to also provide extended multi-year warranty on our products, as well as detailed support.

One brand, endless solutions..

SKU: 5123 - 1539 2938

[View more details](#)

2835 3 SMD CHIPS MODULE



IP67
RATING

EASY TO INSTALL
& Low maintenance

120°
Beaming Angle

DC : 12V



FEATURES

- Reliable high quality super bright SMD SMD LED Module for Signage industry
- IP67 rated waterproof modules: Suitable for mounting near water surfaces
- Super bright output: 100 lumens per module
- Suitable for boat cabin and deck lighting, stair lighting, sign advertising, gardens and exterior lighting
- Recommended daily usage: 10 - 12 hours *Exceeding recommended daily usage will void warranty

CE/EMC

CE/LVD



PACKAGING

Gross Weight (Kgs): 0.004

Unit CBM: 0.0000022

Dimension: 53x12x4.6mm

MASTER BOX PACKAGING

Box Qty: 200

Length (Box) mm: 55

Width (Box) mm: 4

Height (Box) mm: 10

LISTING DETAILS

Commodity Code: 9405403990

EanCode: 3800157610278