



### TECHNICAL INFORMATION

Shape:	Round
Input Power:	AC:220-240V, 50Hz
Unit Color:	Gold
Body Type:	Iron
Cutting Size:	90mm
Operation Temperature:	-25°C to +50°C
Dimension:	Ø105x40mm

### GX53 FITTINGS

V-TAC's LED Lighting range includes lighting that fulfills the needs of various end-users and industries, offering efficient and innovative products that provide modern solutions at an affordable price. We are proud to also provide extended multi-year warranty on our products, as well as detailed support.

*One brand, endless solutions..*

SKU: 3676 - 1640

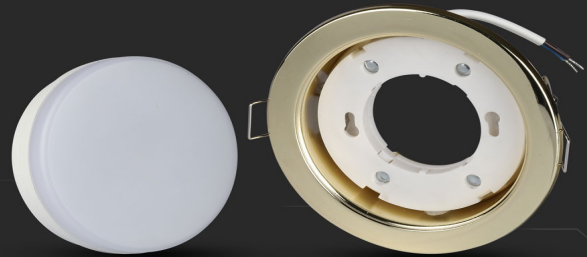
[View more details](#)

### FITTING-ROUND



**GX53**

Compatible with any standard **GX53** lamp.  
\*Lamps are not included



### FEATURES

- Elegant Gold colour finish
- Sturdy and durable Iron build
- Compatible with GX53 Lamps (\*Lamp not included)
- Suitable for Recessed installation
- Applications - Hotels, residential, restaurants, commercial lighting etc.

CE/EMC CE/LVD



### PACKAGING

Gross Weight (Kgs): 0.1  
Unit CBM: 0.000496  
Dimension: Ø105x40mm

### MASTER BOX PACKAGING

Box Qty: 50  
Qty Per Pallet: 2500  
Length (Box) mm: 107  
Width (Box) mm: 107  
Height (Box) mm: 42

### LISTING DETAILS

Commodity Code: 9405109890  
EanCode: 3800157625258