



#### TECHNICAL INFORMATION

Shape:	Round
Unit Color:	White
Body Type:	Zinc Alloy + Ferrum
Operation Temperature:	-20°C to +45°C
Dimension:	82x101mm

#### SURFACE FITTINGS GU10

V-TAC's LED Lighting range includes lighting that fulfills the needs of various end-users and industries, offering efficient and innovative products that provide modern solutions at an affordable price. We are proud to also provide extended multi-year warranty on our products, as well as detailed support.

*One brand, endless solutions..*

SKU: 3669 - 940

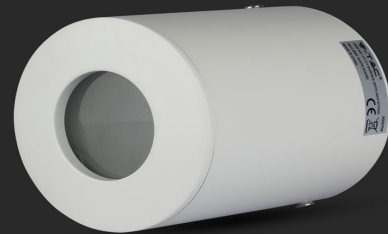
[View more details](#)

#### FITTING-ROUND



**GU10**

Compatible with any standard **GU10** lamp.  
\*Lamps are not included



#### FEATURES

- Elegant White colour finish
- Sturdy and durable Zinc Alloy + Ferrum build
- Compatible with GU10 Lamps (\*Lamp not included)
- Suitable for Surfaced installation
- Applications - Hotels, residential, restaurants, commercial lighting etc.

CE/EMC

CE/LVD



#### PACKAGING

Gross Weight (Kgs): 0.311  
Unit CBM: 0.000891  
Dimension: 82x101mm

#### MASTER BOX PACKAGING

Box Qty: 50  
Qty Per Pallet: 1400  
Length (Box) mm: 90  
Width (Box) mm: 90  
Height (Box) mm: 110

#### LISTING DETAILS

Commodity Code: 9405109890  
EanCode: 3800157625135