



### TECHNICAL INFORMATION

Shape:	Round
Unit Color:	Satin Nickel
Body Type:	Die-Cast Aluminium
Operation Temperature:	-25°C to +50°C
Dimension:	100x142mm

### SURFACE FITTINGS GU10 | LED LIGHTING

V-TAC's LED Lighting range includes lighting that fulfills the needs of various end-users and industries, offering efficient and innovative products that provide modern solutions at an affordable price. We are proud to also provide extended multi-year warranty on our products, as well as detailed support.

*One brand, endless solutions..*

SKU: 3629 - 2555

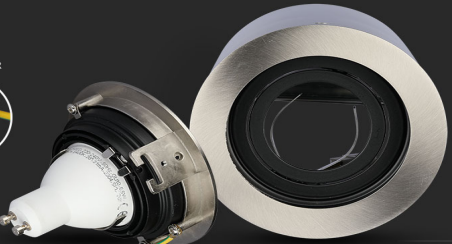
[View more details](#)

### SURFACE ROUND FITTING

Compatible with any standard **GU10** lamp.

\*Lamps are not included

CONNECTOR



### FEATURES

- Elegant Satin Nickel colour finish
- Sturdy and durable Die-Cast Aluminium build
- Compatible with GU10 Lamps (\*Lamp not included)
- Suitable for Surfaced installation
- Applications - Hotels, residential, restaurants, commercial lighting etc.

CE/EMC

CE/LVD



### PACKAGING

Gross Weight (Kgs): 0.42

Unit CBM: 0.0018755

Dimension: 100x142mm

### MASTER BOX PACKAGING

Box Qty: 50

Qty Per Pallet: 600

Length (Box) mm: 110

Width (Box) mm: 110

Height (Box) mm: 150

### LISTING DETAILS

Commodity Code: 9405109890

EanCode: 3800157612067