



TECHNICAL INFORMATION

Shape:	Round
Unit Color:	Satin Nickle
Body Type:	Aluminium + Ferrum
Cutting Size:	90mm
Operation Temperature:	-25°C to +50°C
Dimension:	100x45mm

RECESSED FITTING GU10

V-TAC's LED Lighting range includes lighting that fulfills the needs of various end-users and industries, offering efficient and innovative products that provide modern solutions at an affordable price. We are proud to also provide extended multi-year warranty on our products, as well as detailed support.

One brand, endless solutions..

SKU: 3596 - 2555

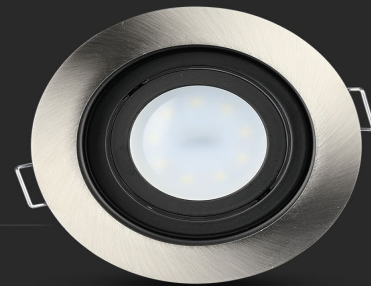
[View more details](#)

FITTING-ROUND



GU10

Compatible with any standard **GU10** lamp.
*Lamps are not included



FEATURES

- Elegant Satin Nickle colour finish
- Sturdy and durable Aluminium + Ferrum build
- Compatible with GU10 Lamps (*Lamp not included)
- Suitable for Recessed installation
- Applications - Hotels, residential, restaurants, commercial lighting etc.

CE/EMC

CE/LVD



PACKAGING

Gross Weight (Kgs): 0.22
Unit CBM: 0.000605
Dimension: 100x45mm

MASTER BOX PACKAGING

Box Qty: 100
Qty Per Pallet: 2100
Length (Box) mm: 110
Width (Box) mm: 110
Height (Box) mm: 50

LISTING DETAILS

Commodity Code: 9405109890
EanCode: 3800157607254