



### TECHNICAL INFORMATION

|                 |                   |
|-----------------|-------------------|
| Watts:          | 360               |
| Input Power:    | AC:200-240V, 50Hz |
| Body Type:      | Metal             |
| Dimmable:       | No                |
| Dimension:      | 208x82x32mm       |
| Output Voltage: | DC:12V            |
| Output Current: | 30A               |

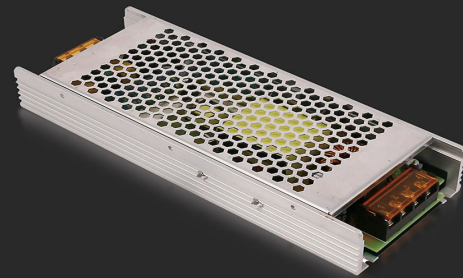
### METAL POWER SUPPLY | LED LIGHTING

V-TAC's LED Lighting range includes lighting that fulfills the needs of various end-users and industries, offering efficient and innovative products that provide modern solutions at an affordable price. We are proud to also provide extended multi-year warranty on our products, as well as detailed support.

*One brand, endless solutions..*

SKU: 3274 - 1583

[View more details](#)



DC:12V



### FEATURES

- Metal drivers that are compatible with all V-TAC Strip lights, LEDs etc.
- Short circuit protection, overload protection and stable output voltage
- Built-in EMI Filter
- High efficiency and low temperature
- 100% load tested
- CE, ROHS and EMC approved

### PACKAGING

Gross Weight: 0.566  
Unit CBM: 0.000792  
Dimension: 208x82x32mm

### MASTER BOX PACKAGING

Box Qty: 20  
Qty Per Pallet: 700  
Length (Box) mm: 40  
Width (Box) mm: 90  
Height (Box) mm: 220

### LISTING DETAILS

Commodity Code: 8504409090  
EanCode: 3800157654449