



TECHNICAL INFORMATION

Shape:	Square
Input Power:	AC:220-240V, 50/60Hz
Unit Color:	Grey+Chrome
Body Type:	Gypsum with Metal
Rated Load:	Max 35W
Dimension:	100x100x130mm

SURFACE FITTINGS GU10

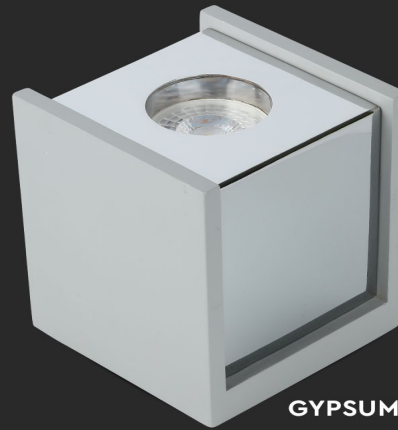
V-TAC's LED Lighting range includes lighting that fulfills the needs of various end-users and industries, offering efficient and innovative products that provide modern solutions at an affordable price. We are proud to also provide extended multi-year warranty on our products, as well as detailed support.

One brand, endless solutions..

SKU: 3142 - 1675

[View more details](#)

COLOR: GREY+CHROME



5 YEAR WARRANTY

GYPSUM WITH METAL BODY



FEATURES

- Elegant Grey+Chrome colour finish
- Sturdy and durable Gypsum with Metal build
- Compatible with GU10 Lamps (*Lamp not included)
- Suitable for Surfaced installation
- Applications - Hotels, residential, restaurants, commercial lighting etc.

PACKAGING

Gross Weight (Kgs):	1.414
Unit CBM:	0.00216
Dimension:	100x100x130mm

MASTER BOX PACKAGING

Box Qty:	12
Qty Per Pallet:	504
Length (Box) mm:	120
Width (Box) mm:	120
Height (Box) mm:	150

LISTING DETAILS

Commodity Code:	9405109890
EanCode:	3800157635417