

TECHNICAL INFORMATION

Shape:	Round
Input Power:	AC:220-240V, 50/60Hz
Unit Color:	White+Chrome
Body Type:	Gypsum with Metal
Cutting Size:	Ø80mm
Rated Load:	Max 35W
Dimension:	Ø100x40mm

RECESSED FITTING GU10

V-TAC's LED Lighting range includes lighting that fulfills the needs of various end-users and industries, offering efficient and innovative products that provide modern solutions at an affordable price. We are proud to also provide extended multi-year warranty on our products, as well as detailed support.

One brand, endless solutions..

SKU: 3127 - 1129

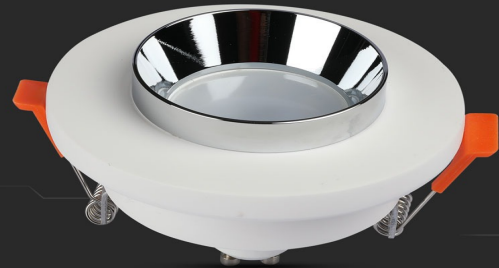
[View more details](#)

FITTING-RECESSED



GU10

Compatible with any standard **GU10** lamp.
*Lamps are not included



FEATURES

- Elegant White+Chrome colour finish
- Sturdy and durable Gypsum with Metal build
- Compatible with GU10 Lamps (*Lamp not included)
- Suitable for Recessed installation
- Applications - Hotels, residential, restaurants, commercial lighting etc.

PACKAGING

Gross Weight (Kgs): 0.331
Unit CBM: 0.001521
Dimension: Ø100x40mm

MASTER BOX PACKAGING

Box Qty: 24
Qty Per Pallet: 960
Length (Box) mm: 90
Width (Box) mm: 130
Height (Box) mm: 130

LISTING DETAILS

Commodity Code: 9405109890
EanCode: 3800157634526