



TECHNICAL INFORMATION

Shape:	Square
Input Power:	AC:220-240V, 50/60Hz
Unit Color:	White+Chrome
Body Type:	Gypsum with Metal
Rated Load:	Max 35W
Dimension:	100x100x130mm

SURFACE FITTINGS GU10

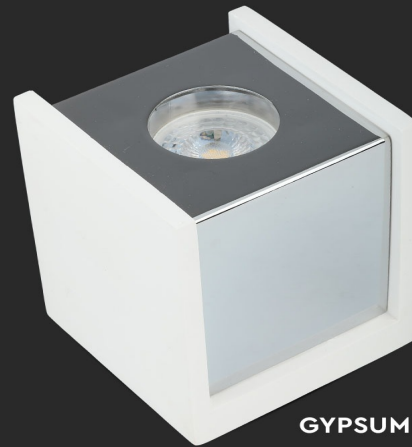
V-TAC's LED Lighting range includes lighting that fulfills the needs of various end-users and industries, offering efficient and innovative products that provide modern solutions at an affordable price. We are proud to also provide extended multi-year warranty on our products, as well as detailed support.

One brand, endless solutions..

SKU: 3116 - 1129

[View more details](#)

COLOR: **WHITE+CHROME**



5 YEAR WARRANTY

GYPSUM WITH METAL BODY



FEATURES

- Elegant White+Chrome colour finish
- Sturdy and durable Gypsum with Metal build
- Compatible with GU10 Lamps (*Lamp not included)
- Suitable for Surfaced installation
- Applications - Hotels, residential, restaurants, commercial lighting etc.

PACKAGING

Gross Weight (Kgs):	1.353
Unit CBM:	0.002704
Dimension:	100x100x130mm

MASTER BOX PACKAGING

Box Qty:	12
Qty Per Pallet:	300
Length (Box) mm:	130
Width (Box) mm:	130
Height (Box) mm:	160

LISTING DETAILS

Commodity Code:	9405109890
EanCode:	3800157634410