



TECHNICAL INFORMATION

Watts:	36
Lumens:	4320
Input Power:	AC:200-240V, 50/60Hz
Long Life:	20,000 Hours
Unit Color:	Transparent
Body Type:	ABS+PC
PF:	>0.9
LED Chip Type:	SMD-Samsung Chip
CRI:	>80
Operation Temperature:	-20°C to +40°C
Beam Angle:	120°
Color:	4000K
Dimension:	1200x78x72mm
lumens per watt:	120
Linkable:	Upto 10 Units
Type:	Transparent Cover

PRO CLEAR COVER SERIES | LED LIGHTING

V-TAC's LED Lighting range includes lighting that fulfills the needs of various end-users and industries, offering efficient and innovative products that provide modern solutions at an affordable price. We are proud to also provide extended multi-year warranty on our products, as well as detailed support.

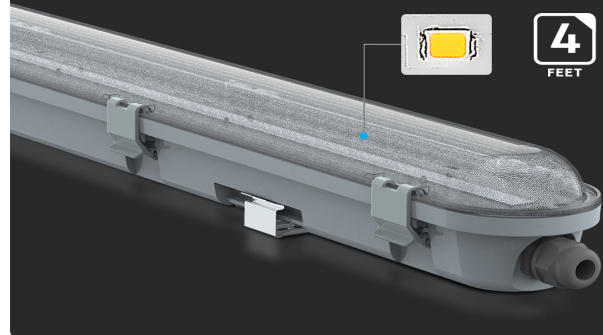
One brand, endless solutions..

SKU: 20205 - 1406 1648

[View more details](#)

SMD LED'S

Provided by Samsung



IP65
RATING



3 YEAR
WARRANTY



IK 06



CRI > 80



120
Lumen/W

FEATURES

- Waterproof Fitting designed with Lumen efficiency 120LM/W
- Using high power SMD-Samsung Chip technology which makes it more reliable and durable
- Strong and sturdy ABS+PC body
- Complete protection from water, dust and corrosion - IP65 Rated
- Designed for maximum efficiency & minimal glare
- Suitable for parking lots, warehouses, garages, storage docks, workshops etc.



PACKAGING

Gross Weight (Kgs): 1.28
Unit CBM: 0.010431
Dimension: 1200x78x72mm

MASTER BOX PACKAGING

Box Qty: 12

LISTING DETAILS

EanCode: 3800157657761