



FOLLOW TRUNKING LIGHTS | LED LIGHTING

V-TAC's LED Lighting range includes lighting that fulfills the needs of various end-users and industries, offering efficient and innovative products that provide modern solutions at an affordable price. We are proud to also provide extended multi-year warranty on our products, as well as detailed support.

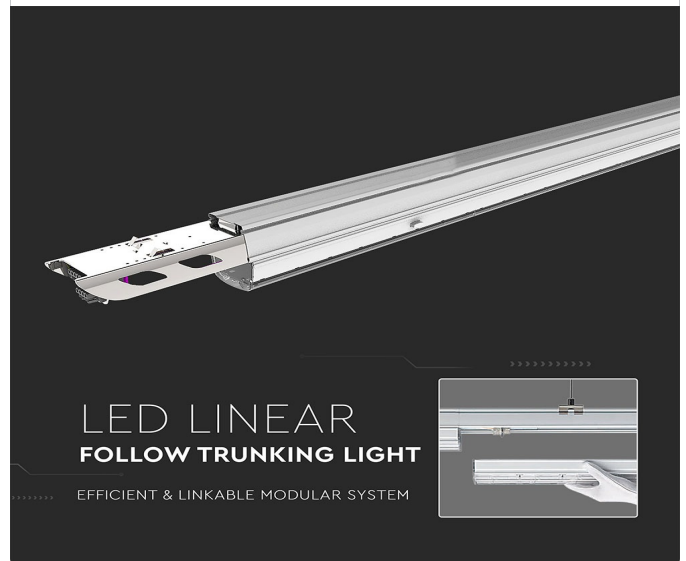
One brand, endless solutions..

SKU: 1365 - 933 940

[View more details](#)

TECHNICAL INFORMATION

Watts:	50
Lumens:	8000
Input Power:	AC:220-240V, 50/60Hz
Long Life:	50,000 Hours
Unit Color:	White
Body Type:	Steel
PF:	>0.9
LED Chip Type:	SMD
CRI:	>80
Dimmable:	Yes
Beam Angle:	DA
Color:	4000K
Dimension:	1700x60x74mm
lumens per watt:	160



FEATURES

- Energy efficient Linear Trunking follow System that requires little maintenance
- Designed with DA beam angle
- Seamless continuous row system with a maximum connection up to 3500W/Row
- High quality SMD chips deliver an output of 160 lumen per Watt
- Built Strong and durable with Steel
- On/Off Cycles: 15000
- Suitable for supermarkets, warehouses, service centres, and gymnasiums

CE/EMC

CE/LVD



PACKAGING

Gross Weight (Kgs): 4.45
Unit CBM: 0.011539075
Dimension: 1700x60x74mm

MASTER BOX PACKAGING

Box Qty: 2
Qty Per Pallet: 80
Length (Box) mm: 83
Width (Box) mm: 83
Height (Box) mm: 1675

LISTING DETAILS

Commodity Code: 9405403990
EanCode: 3800157625692