



PERSONAL PROTECTIVE EQUIPMENT

2022
COLLECTION
2022

CONTENTS



02
HEAD

14
HAND

62
BODY

91
FEET

115
TECHNICAL
INFORMATION



HEAD PROTECTION

Mallcom works in close coordination with the designers and the users to provide dynamic head protection gear. Mallcom has gained expertise in the entire safety manufacturing process, starting with sourcing to moulding and assembling them, and finally packaging of the many products in the safety range.

Construction • Engineering • Manufacturing • Mining



DIAMOND I

Non ventilated zip adjusted helmet
UV resistant HDPE shell
Textile lining with 3 bands & 8 fixing points
2 positions for vertical adjustment

CE



Zip tightening with textile lining



DIAMOND II

Non ventilated zip adjusted helmet
UV resistant HDPE shell
LDPE lining with 3 bands & 8 fixing points
2 positions for vertical adjustment

CE



Zip attachment



DIAMOND III

Non ventilated ratchet adjusted helmet
UV resistant HDPE shell
Textile lining with 3 bands & 8 fixing points
2 positions for vertical adjustment

CE



Available Colours:



Construction • Engineering • Manufacturing • Mining



DIAMOND IV

Non ventilated ratchet adjusted helmet
UV resistant HDPE shell
LDPE lining with 3 bands & 8 fixing points
2 positions for vertical adjustment

CE



Ratchet Attachment



DIAMOND X

Ventilated zip adjusted helmet
UV resistant HDPE shell
Textile lining with 3 bands & 8 fixing points
2 positions for vertical adjustment

CE



DIAMOND XI

Ventilated zip adjusted helmet
UV resistant HDPE shell
LDPE lining with 3 bands & 8 fixing points
2 positions for vertical adjustment

CE



LDPE Lining



Available Colours:



Construction • Engineering • Manufacturing • Mining



DIAMOND XII

CE

Ventilated ratchet adjusted helmet
UV resistant HDPE shell
Textile lining with 3 bands & 8 fixing points
2 positions for vertical adjustment



DIAMOND XIII

CE

Ventilated ratchet adjusted helmet
UV resistant HDPE shell
LDPE lining with 3 bands & 8 fixing points
2 positions for vertical adjustment



Ventilation



CH 01 STR

CE

20mm size adjustable textile chin strap
Self breaking system with stretchable fabric



CH 02 STR

CE

20mm size adjustable textile chin strap with chin guard
Self breaking system with stretchable fabric



Available Colours:



Automobile • Aviation • Food & Beverage • Logistics



SAPPHIRE SP G1

Light weight impact resistant baseball type cap
HDPE shell inside with EVA reinforcement
Short peak polyester-cotton covering
Velcro adjustable size from 52 to 56 cm



HDPE inside shell



TOPAZ 0

Light weight impact resistant baseball type cap
ABS shell inside with EVA reinforcement
Long peak polyester-cotton covering
Velcro adjustable size from 58 to 62 cm



Velcro



TOPAZ HI VIS

Light weight impact resistant baseball type cap
ABS shell inside
Cotton polyester outer shell with inside EVA reinforcement
Velcro adjustable size from 58 to 62 cm



ABS inside shell

Available Colours:



FILTERING HALF MASK



Bio technology • Chemical • Construction • Pharmaceutical



M 1102P

CE

Filtering half mask to protect against particles
FFP1 foldable white coloured half mask
Soft non woven fabric with nose clip for adjustment
Adjustable elastic strap for fastening



M 1202PV

CE

Filtering half mask to protect against particles
FFP2 foldable white coloured half mask
with exhalation valve
Soft non woven fabric with nose clip for adjustment
Adjustable Elastic strap for fastening



Valve



M 3102PV

CE

Filtering half mask to protect against particles
FFP1 foldable yellow coloured half mask
with exhalation valve
Soft non woven fabric with nose clip for adjustment
Adjustable elastic strap for fastening



FILTERING HALF MASK



Agriculture • Chemical • Construction • Pharmaceutical



M 3202P

CE

Filtering half mask to protect against particles
FFP2 foldable yellow coloured half mask
Soft non woven fabric with nose clip for adjustment
Adjustable elastic strap for fastening



Nose Clip



M 2102P

CE

Filtering half mask to protect against particles
FFP1 foldable grey coloured half mask
Soft non woven fabric with nose clip
for adjustment
Adjustable elastic strap for fastening



M 2202PV

CE

Filtering half mask to protect against particles
FFP2 foldable grey coloured half mask
with exhalation valve
Soft non woven fabric with nose clip for adjustment
Adjustable elastic strap for fastening



Valve



FILTERING HALF MASK



Agriculture • Chemical • Construction • Pharmaceutical



L 1202PV

CE

Aesthetically designed Foldable FFP2 face masks
Particulate matter filtering disposable mask
Exhalation valve is available
Concealed Nose clip
Ultrasonically sealed
Head loop elastic fastening system



EN 149:2001+A1:2009



L 2102PV

CE

Disposable FFP1 face mask
Exhalation valve is available
Foldable type Nose clip for better fit
Ultrasonically sealed mask
Head loop elastic fastening system



EN 149:2001+A1:2009



L 1102P

CE

Aesthetically designed Foldable FFP1 face mask
Particulate matter filtering disposable mask
Concealed Nose clip
Ultrasonically sealed
Head loop elastic fastening system



EN 149:2001+A1:2009

FILTERING HALF MASK



Agriculture • Chemical • Construction • Pharmaceutical



L 3202P

CE

Aesthetically designed Foldable FFP2 face mask
Particulate matter filtering disposable mask
Concealed Nose clip
Ultrasonically sealed
Head loop elastic fastening system



EN 149:2001+A1:2009



L 3103P

CE

Aesthetically designed Foldable FFP1 face mask
Particulate matter filtering half mask
Concealed Nose clip
Ultrasonically sealed
Ear loop elastic fastening system



EN 149:2001+A1:2009



L 2103PV

CE

Aesthetically designed Foldable FFP1 face mask
Particulate matter filtering half mask
Concealed Nose clip
Exhalation valve is available
Ultrasonically sealed
Ear loop elastic fastening system



EN 149:2001+A1:2009

Agriculture • Chemical • Construction • Pharmaceutical



L 1203PV

CE

Aesthetically designed Foldable FFP2 face mask
Particulate matter filtering disposable mask
Exhalation valve is available
Concealed Nose clip
Ultrasonically sealed
Earloop elastic fastening system



EN 149:2001+A1:2009



L 1203P

CE

Aesthetically designed Foldable FFP2 face mask
Particulate matter filtering disposable mask
Exhalation valve is available
Concealed Nose clip
Ultrasonically sealed
Earloop elastic fastening system



EN 149:2001+A1:2009



L 3302PV

CE

Aesthetically designed Foldable FFP3 face mask
Particulate matter filtering half mask
Concealed Nose clip
Exhalation valve is available
Ultrasonically sealed
Ear loop elastic fastening system



EN 149:2001+A1:2009

FILTERING HALF MASK



Agriculture • Chemical • Construction • Pharmaceutical



L 2302P

CE

Aesthetically designed Foldable FFP3 face mask
Particulate matter filtering disposable mask
Concealed Nose clip
Ultrasonically sealed
Head loop elastic fastening system



EN 149:2001+A1:2009



L 2302PV

CE

Aesthetically designed Foldable FFP3 face mask
Particulate matter filtering disposable mask
Exhalation valve is available
Concealed Nose clip
Ultrasonically sealed
Head loop elastic fastening system



EN 149:2001+A1:2009



CK86P3

CE

Non-Sterile
Pleated disposable 3-layer Hygiene mask
Blue colour
Concealed strip to fit securely on the nose
Offers snugly fitting
Elastic ear hooks for comfort during wearing
Ultrasonic sealing ensures strong bonding



EN 14683:2020

Agriculture • Chemical • Construction • Pharmaceutical



CM86P3

Non-Sterile

Pleated disposable 3-layer Hygiene mask

Green colour

Concealed strip to fit securely on the nose

Offers snugly fitting

Elastic ear hooks for comfort during wearing

Ultrasonic sealing ensures strong bonding

CE



EN 14683:2020



KL86P3

Non-Sterile

Pleated disposable 3-layer Hygiene mask

Pink, Green & Blue aesthetically printed design

Concealed nose clip to fit securely on the nose

Offers snugly fitting

Elastic ear hooks for comfort during wearing

Ultrasonic sealing ensures strong bonding

CE



EN 14683:2020



NK86L3

Non-Sterile

Pleated disposable 3-layer Hygiene mask

Red aesthetically printed design

Concealed nose clip to fit securely on the nose

Offers snugly fitting

Elastic ear hooks for comfort during wearing

Ultrasonic sealing ensures strong bonding

CE



EN 14683:2020



HAND PROTECTION

Mallcom has gained unparalleled expertise in production of hand gear suiting the application requirement. From driving to welding to cut resistant, we are able to meet crucial industrial applications. A wide range of hand protection gears lie in the repertoire of Mallcom, including leather gloves, string knit gloves and nitrile supported gloves - both cut-n-stitch and seamless.

CUT & SEWN NITRILE GLOVES



Material Handling • Oil & Gas • Paint & Chemical • Petrochemical



LPKY

Cut and sewn nitrile gloves
Yellow coloured lite NBR palm coating
Cotton interlock liner with knitted wrist
Available sizes: 7 - 11



LPKB

Cut and sewn nitrile gloves
Blue coloured lite NBR palm coating
Cotton interlock liner with knitted wrist
Available sizes: 7 - 11



LFKB

Cut and sewn nitrile gloves
Blue coloured lite NBR full coating
Cotton interlock liner with knitted wrist
Available sizes: 7 - 11



LFCB

Cut and sewn nitrile gloves
Blue coloured lite NBR full coating
Cotton interlock liner with safety cuff
Available sizes: 7 - 11



CUT & SEWN NITRILE GLOVES



Material Handling • Oil & Gas • Paint & Chemical • Petrochemical



LFKY

Cut and sewn nitrile gloves
Yellow coloured lite NBR full coating
Cotton interlock liner with knitted wrist
Available sizes: 7 - 11



GPKY

Eco range cut and sewn nitrile gloves
Yellow coloured lite NBR palm coating
Cotton interlock liner with knitted wrist
Available sizes: 7 - 11



SFCB

Eco range cut and sewn nitrile gloves
Blue coloured lite NBR full coating
Cotton fleecy liner with safety cuff
Available sizes: 7 - 11



SFKB

Eco range cut and sewn nitrile gloves
Blue coloured lite NBR full coating
Cotton fleecy liner with knitted wrist
Available sizes: 7 - 11



CUT & SEWN NITRILE GLOVES



Material Handling • Oil & Gas • Paint & Chemical • Petrochemical



MPKB

Cut and sewn nitrile gloves
Blue coloured medium NBR palm coating
Cotton interlock liner with knitted wrist
Available sizes: 7 - 11



EN388
4121X



MPCB

Cut and sewn nitrile gloves
Blue coloured medium NBR palm coating
Cotton interlock liner with safety cuff
Available sizes: 7 - 11



EN388
4121X



MFCB

Cut and sewn nitrile gloves
Blue coloured medium NBR full coating
Cotton interlock liner with safety cuff
Available sizes: 7 - 11



EN388
4121X



MFKB

Cut and sewn nitrile gloves
Blue coloured medium NBR full coating
Cotton interlock liner with knitted wrist
Available sizes: 7 - 11



EN388
4121X

CUT & SEWN NITRILE GLOVES



Material Handling • Oil & Gas • Paint & Chemical • Petrochemical



TFCB

Cut and sewn nitrile gloves
Blue coloured heavy NBR full coating
Cotton fleecy liner with safety cuff
Available sizes: 7 - 11



EN388
4221X



TPCB

Cut and sewn nitrile gloves
Blue coloured heavy NBR palm coating
Cotton fleecy liner with safety cuff
Available sizes: 7 - 11



EN388
4221X



TFKB

Cut and sewn nitrile gloves
Blue coloured heavy NBR full coating
Cotton fleecy liner with knitted wrist
Available sizes: 7 - 11



EN388
4221X



TPKB

Cut and sewn nitrile gloves
Blue coloured heavy NBR palm coating
Cotton fleecy liner with knitted wrist
Available sizes: 7 - 11



EN388
4221X

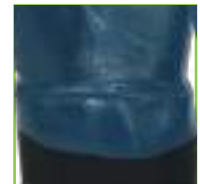
CUT & SEWN NITRILE GLOVES



Material Handling • Oil & Gas • Paint & Chemical • Petrochemical



Rexin cuff



Extended nitril coating



Glass blended para aramid liner

DFRB

Cut resistant cut and sewn nitrile gloves
Level 5 blade cut and Level 4 abrasion resistant
Blue coloured heavy NBR full coating
Cotton fleecy liner shell with para-aramid lining
Available sizes: 8 - 11

EN388
4532D

EN407
X1XXXX



CUT & SEWN NITRILE GLOVES



Material Handling • Oil & Gas • Paint & Chemical • Petrochemical



TFCB R

Cut and sewn nitrile gloves
Blue coloured heavy NBR full rough coating
Cotton fleecy liner with safety cuff
Available sizes: 7 - 11



TPCB R

Cut and sewn nitrile gloves
Blue coloured heavy NBR palm rough coating
Cotton fleecy liner with safety cuff
Available sizes: 7 - 11



LITE IL 30

30cm gauntlet style nitrile gloves
White coloured lite NBR full coating
Cotton interlock lining
Available sizes: 7 - 11



LITE IL 40

40cm gauntlet style nitrile gloves
White coloured lite NBR full coating
Cotton interlock lining
Available sizes: 7 - 11



Material Handling • Oil & Gas • Paint & Chemical • Petrochemical



TECHO IL 30

30cm gauntlet style nitrile gloves
Yellow coloured heavy NBR full coating
Cotton interlock lining
Available sizes: 7 - 11



EN ISO 374-5



EN388



4221X

EN ISO 374-1:
TYPE C



K



TECHO IL 40

40cm gauntlet style nitrile gloves
Yellow coloured heavy NBR full coating
Cotton interlock lining
Available sizes: 7 - 11



EN ISO 374-5



EN388



4221X

EN ISO 374-1:
TYPE C



K



TECHO FL 30

30cm gauntlet style nitrile gloves
Blue coloured heavy NBR full coating
Cotton fleecy lining
Available sizes: 7 - 11



EN ISO 374-5



EN388



4221X

EN ISO 374-1:
TYPE C



K



TECHO FL 40

40cm gauntlet style nitrile gloves
Blue coloured heavy NBR full coating
Cotton interlock lining
Available sizes: 7 - 11



EN ISO 374-5



EN388



4221X

EN ISO 374-1:
TYPE C



K

SEAMLESS NITRILE GLOVES



Automobile • Chemical & Paint • Construction • Oil & Gas



P35NHK

Seamless polyester nitrile gloves
15 gauge grey polyester liner
Sandy finish black NBR palm coating
on 3/4th smooth finish blue
Available sizes: 7 - 11



P25NGA

Seamless polyester nitrile gloves
15 gauge white polyester liner
Smooth finish grey NBR palm coating
Available sizes: 7 - 11



P34NBA

Super grip seamless nitrile gloves
13 gauge grey polyester liner
Smooth finish black NBR palm coating
Available sizes: 7 - 11



Anti slip surface

NEW



PR4NGA

Super grip seamless nitrile gloves
13 gauge yellow polyester liner
Smooth finish grey NBR palm coating
Available sizes: 7 - 11



Anti slip surface

NEW



SEAMLESS NITRILE GLOVES



Logistics • Material Handling • Manufacturing • Repairs & Maintenance



P65NAG

Seamless polyester nitrile gloves
15 gauge hi-vis green polyester liner
Sandy finish blue NBR palm coating
Available sizes: 7 - 11



P85NAG

Seamless polyester nitrile gloves
15 gauge orange polyester liner
Sandy finish blue NBR palm coating
Available sizes: 7 - 11



P35NAG

Seamless polyester nitrile gloves
15 gauge grey polyester liner
Sandy finish black NBR palm coating
Available sizes: 7 - 11



M25NWC

Seamless chemical resistant nitrile gloves
15 gauge grey nylon liner
Foamy finish white NBR full coating
Available sizes: 7 - 10



Logistics • Material Handling • Manufacturing • Repairs & Maintenance



N33VBA

Seamless dotted nitrile gloves
13 gauge grey nylon liner
Smooth finish black NBR palm coating with PVC dotting
Available sizes: 7 - 11



EN388
4121X



N35NBA

Seamless nylon nitrile gloves
15 gauge grey nylon liner
Smooth finish black NBR palm coating
Available sizes: 7 - 11



EN388
4121X



N35NBD

Seamless nylon nitrile gloves
15 gauge grey nylon liner
Foamy finish black NBR palm coating
Available sizes: 7 - 11



EN388
4121X



N35NBG

Seamless nylon nitrile gloves
15 gauge grey nylon liner
Sandy finish black NBR palm coating
Available sizes: 7 - 11

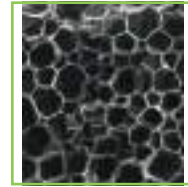


EN388
4121X

FOAMY NITRILE GLOVES



Material Handling • Repairs & Maintenance • Logistics • Manufacturing • Electronics



Foamy flex finished palm under microscope



Spandex blended liner for flexibility



Aesthetically fused binding

M35NBV

Soft & Comfortable
High dexterity
Non glossy
Non sticky
Excellent grip
Uniform foam distribution
No bubble burst pore



EN388
4131X

OEKO-TEX®
CONFIDENCE IN TEXTILES
STANDARD 100
2017OK0969 AITEX
Tested for harmful substances.
www.oeko-tex.com/standard100

SEAMLESS NITRILE GLOVES



Logistics • Material Handling • Manufacturing • Repairs & Maintenance



W43N BG

Seamless polyester winter nitrile gloves
13 gauge blue polyester liner shell
with acrylic lining
Sandy finish black NBR palm coating
Available sizes: 7 - 10

EN388
4242X



W63N AG

Seamless polyester winter nitrile gloves
13 gauge hi-vis green polyester liner
shell with acrylic lining
Sandy finish black NBR palm coating
Available sizes: 7 - 10

EN388
4242X



W83N BG

Seamless polyester winter nitrile gloves
13 gauge orange polyester liner
shell with acrylic lining
Sandy finish black NBR palm coating
Available sizes: 7 - 10

EN388
4242X



W33N RG

Seamless polyester winter nitrile gloves
13 gauge grey polyester liner
shell with acrylic lining
Sandy finish black NBR palm coating
Available sizes: 7 - 10

EN388
4242X



CUT RESISTANT NITRILE GLOVES



Automobile • Glass & Ceramic • Logistics • Material Handling • Heavy Engineering • Manufacturing



Polyester plated cut resistant liner



Sandy finished palm surface



Sandy finished palm surface

L83NBG

Level 5 cut resistant seamless nitrile gloves
13 gauge orange seamless liner
UHMWPE & glass fibre blended liner
Sandy finish black NBR palm coating
Available sizes: 7 - 10

EN388
4541C



OEKO-TEX®
CONFIDENCE IN TEXTILES
STANDARD 100
2017OK0969 AITEX
Tested for harmful substances.
www.oeko-tex.com/standard100



Automobile • Glass & Ceramic • Logistics • Material Handling



H33NBG

Level 5 cut resistant seamless nitrile gloves
13 gauge grey seamless liner
UHMWPE & glass fibre blended liner
Sandy finish black NBR palm coating
Available sizes: 7 - 10



F33NBG

Level 3 cut resistant seamless nitrile gloves
13 gauge grey seamless liner
UHMWPE blended liner
Sandy finish black NBR palm coating
Available sizes: 7 - 10



E33NBG

Level E cut resistant seamless nitrile gloves
13 gauge grey seamless liner
UHMWPE & steel yarn blended liner
Sandy finish black NBR palm coating
Available sizes: 7 - 10



G63NBG

Level 5 cut resistant seamless nitrile gloves
13 gauge Hi-Vis green seamless liner
UHMWPE & glass fibre blended liner
Sandy finish black NBR palm coating
Available sizes: 7 - 10



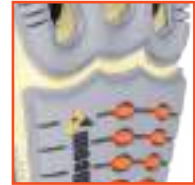
IMPACT RESISTANT NITRILE GLOVES



Construction • Heavy Engineering • Metallurgy • Manufacturing



NEW



m-KARPALS
PROTECT® patch



Velcro adjusted cuff



Sandy finished
palm surface

LR3TDL

Impact shielded level 5 cut resistant nitrile gloves

13 gauge yellow seamless liner

Flexible m-KARPALS PROTECT® patch back

UHMWPE & glass fiber blended liner

Sandy finish black NBR palm coating

Available sizes: 7 - 10



Automobile • Glass & Ceramic • Logistics • Material Handling • Heavy Engineering • Manufacturing



H33TDL

Impact shielded level 5 cut resistant nitrile gloves
13 gauge Hi-Vis green seamless liner
Flexible m-KARPALS PROTECT® patch back
UHMWPE & glass fiber blended liner
Sandy finish black NBR palm coating
Available sizes: 7 - 10



L83TDL

Impact shielded level 5 cut resistant nitrile gloves
13 gauge orange seamless liner
Flexible m-KARPALS PROTECT® patch back
UHMWPE & glass fiber blended liner
Sandy finish black NBR palm coating
Available sizes: 7 - 10



G63TDL

Impact shielded level 5 cut resistant nitrile gloves
13 gauge Hi-Vis green seamless liner
Flexible m-KARPALS PROTECT® patch back
UHMWPE & glass fiber blended liner
Sandy finish black NBR palm coating
Available sizes: 7 - 10



TMFCB

Impact shielded cut and sewn nitrile gloves
Blue coloured medium NBR full coating
Flexible m-KARPALS PROTECT® patch back
Cotton interlock liner with safety cuff
Available sizes: 7 - 10



Automobile • Glass & Ceramic • Logistics • Material Handling • Heavy Engineering • Manufacturing



B33NBG

13 gauge high cut resistant seamless nitrile glove
Steel filament blended **Dyneema®** yarn knitted liner
NBR coated palm with sandy finish
Azo dyes free gloves
Available sizes 7 - 11

EN388



D33NBG

13 gauge high cut resistant seamless nitrile glove
Fiber glass blended **Dyneema®** yarn knitted liner
NBR coated palm with sandy finish
Azo dyes free gloves
Available sizes 7 - 11

EN388



D45NBG

15 gauge high cut resistant seamless nitrile glove
Fiber glass blended **Dyneema®** yarn knitted liner
NBR coated palm with sandy finish
Azo dyes free gloves
Available sizes 7 - 11

EN388



KNITTED GLOVES

Light Engineering • Hospitality • Logistics • Maintenance



C0705

100% cotton knitted seamless gloves
Knitted in 7 gauge machine
Coloured elasticated wrist
Available sizes: 6-11



OEKO-TEX®
CONFIDENCE IN TEXTILES
STANDARD 100
2017OK0969 AITEX
Tested for harmful substances.
www.oeko-tex.com/standard100

EN388
4111X



P1006

100% polyester knitted seamless gloves
Knitted in 13 gauge machine
Coloured elasticated wrist
Available sizes: 6-11



OEKO-TEX®
CONFIDENCE IN TEXTILES
STANDARD 100
2017OK0969 AITEX
Tested for harmful substances.
www.oeko-tex.com/standard100

EN388
4111X



N1002

100% nylon knitted seamless gloves
Knitted in 10 gauge machine
Coloured elasticated wrist
Available sizes: 6-11



OEKO-TEX®
CONFIDENCE IN TEXTILES
STANDARD 100
2017OK0969 AITEX
Tested for harmful substances.
www.oeko-tex.com/standard100

EN388
4121X



C1002D

100% cotton knitted seamless glove with PVC dots
Knitted in 10 gauge machine
Coloured elasticated wrist
Available sizes: 6-11



EN388
4121X

KNITTED GLOVES



Light Engineering • Hospitality • Logistics • Maintenance



P1308D

100% dyed polyester knitted seamless with PVC dots
Knitted in 13 gauge machine
Level 4 tear resistance
Available sizes: 6-11



Dyed polyester yarn
with PVC dots.



N1002D

100% nylon knitted seamless glove with PVC dots
Knitted in 10 gauge machine
Coloured elasticated wrist
Available sizes: 6-11



NC1002D

100% white nylon knitted seamless gloves
with cotton plating
PVC dots and elasticized wrist
Knitted in 10 gauge machine
Level 4 tear resistance
Available sizes: 6-11



F65G5

Blue HPPE knitted seamless gloves
Knitted in 15 gauge machine
High cut resistance
Available sizes: 6-11



PARA-ARAMID GLOVES



Electronics • Food & Beverage • Maintenance • Material Handling



K010

100% para-aramid knitted seamless gloves
Knitted in 10 gauge machine
Level 4 tear resistance
Available sizes: 6-11



EN388
124XX

OEKO-TEX®
CONFIDENCE IN TEXTILES
STANDARD 100
2017OK0969 AITEX
Tested for harmful substances.
www.oeko-tex.com/standard100



Kevlar® with PVC dotting

K010D

OEKO-TEX®
CONFIDENCE IN TEXTILES
STANDARD 100
2017OK0969 AITEX
Tested for harmful substances.
www.oeko-tex.com/standard100



K010D

100% para-aramid knitted seamless gloves
Available in 7, 10 and 13 gauge
Heat and cut resistant application
Available sizes: 6-11



KCL

100% para-aramid knitted seamless gloves
Knitted in 7 gauge machine
100% cotton lining inside
Heat application upto 30°C and level 4 tear resistance
Available sizes: 6-11



EN388 EN407
234XX 42XXXX



KP07

100% para-aramid knitted seamless pile gloves
Elasticated para-aramid pile wrist
Terry towel finish
Available sizes: 6-11



Electronics • Food & Beverage • Maintenance • Material Handling



H33G5

100% TUFF knitted seamless gloves
Knitted in 13 gauge machine
Excellent comfort and dexterity
Available sizes: 6-11



F33S5

100% TUFFTECH knitted seamless gloves
Knitted in 13 gauge machine
Excellent cut resistant
Available sizes: 6-11



P153S

Grey 100% polyester knitted seamless gloves
Knitted in 15 gauge machine
Anti slip finish on palm to enhance grip
Available sizes: 6-11



Anti slip surface



P151A

White 100% polyester knitted seamless gloves
Knitted in 15 gauge machine
Thumb, index and middle finger tip has carbon fiber for electrical conductivity
Available sizes: 6-11



NEW

Automobile • Logistics • Maintenance • Material Handling



FL010

Cut resistant blended knitted seamless gloves
Split leather palm reinforcement
UHMWPE & elastane fibre blended yarn
Knitted in 10 gauge machine
Coloured overlock binding
Available sizes: 7-10



HL010

Cut resistant blended knitted seamless gloves
Split leather palm reinforcement
UHMWPE & glass fibre blended yarn
Knitted in 10 gauge machine
Coloured overlock binding
Available sizes: 7-10



KL010

100% para-aramid knitted seamless gloves
Split leather palm reinforcement
Knitted in 10 gauge machine
Coloured overlock binding
Available sizes: 7-10



PL010

Cut resistant blended knitted seamless gloves
Split leather palm reinforcement
Para-aramid & polyamide fibre blended yarn
Knitted in 10 gauge machine
Coloured overlock binding
Available sizes: 7-10



Automobile • Logistics • Maintenance • Material Handling



KARMSLV

100% para-aramid knitted arm sleeves
Sleeves with thumb hole
Exceptional heat resistance
Level 4 tear resistance
16" in length

EN388 EN407
224XX 43XXXX

OEKO-TEX®
CONFIDENCE IN TEXTILES
STANDARD 100
2017OK0969 AITEX
Tested for harmful substances.
www.oeko-tex.com/standard100



ARMOREX

High blade cut resistant seamless arm sleeve
UHMWPE and glass blended fiber
Double velcro adjustable closure
17.5" in length

OEKO-TEX®
CONFIDENCE IN TEXTILES
STANDARD 100
2017OK0969 AITEX
Tested for harmful substances.
www.oeko-tex.com/standard100



PARMSLV

100% polyester seamless arm sleeve
Knitted in 13 gauge machine
Open elbow for flexibility
17.5" in length



Construction • Iron & Steel • Logistics • Manufacturing



D232

4 tips natural grain leather driver gloves
Wing thumb and elasticised back
Coloured binding tape at the end of the cuff
Available sizes: 7-11



D332

4 tips yellow grain leather driver gloves
Wing thumb and elasticised back
Coloured binding tape at the end of the cuff
Available sizes: 7-11



D333

4 tips yellow grain leather driver gloves
Straight thumb and elasticised back
Self helm binding at the end of the cuff
Available sizes: 7-11



D434

4 tips beige grain leather driver gloves
Keystone thumb and elasticised back
Coloured binding tape at the end of the cuff
Available sizes: 7-11



Light Engineering • Hospitality • Logistics • Maintenance



D662

Grain & split combined natural leather driver gloves
Wing thumb and elasticised back
Coloured binding tape at the end of the cuff
Available sizes: 7-11

EN388
3132X



D762

Grain & split combined yellow leather driver gloves
Wing thumb and elasticised back
Coloured binding tape at the end of the cuff
Available sizes: 7-11



D204

Natural grain leather driver gloves
Wing thumb
Elasticated rib with leather pulse protection
Available sizes: 7-11



D 436

4 tips beige grain leather driver gloves
Wing thumb and fully adjustable leather fastener tape
Coloured binding tape at the end of the cuff
Available sizes: 7-11



Light Engineering • Hospitality • Logistics • Maintenance



D809

Dyed brown grain & split combined leather driver gloves
Key stone thumb
Elasticated rib with leather pulse protection
Available sizes: 7-11



D810

Combined leather driver gloves
Beige grain palm and brown split leather back
Keystone thumb and elasticized back
Coloured binding tape at the end of the cuff
Available sizes: 7-11



D591

4 tips natural split leather driver gloves
Wing thumb and elasticised back
Coloured binding tape at the end of the cuff
Available sizes: 7-11



D120

Combined water and oil repellant leather driver gloves
Reverse grain on palm and grain on back
Wing thumb and elasticised back
Coloured binding tape at the end of the cuff
Available sizes: 7-11



Automobile • Heavy Engineering • Material Handling • Oil & Gas



D116

Reinforced water repellent dyed grain leather driver gloves
Blue water repellent leather reinforcement on green leather palm
Elasticated rib with leather pulse protection
Available sizes: 7-11



D132

4 tips water and oil repellent dyed khaki grain leather driver gloves
Wing thumb
Elasticated rib with leather pulse protection
Available sizes: 7-11



D142

Dyed water and oil repellent green grain leather driver gloves
Wing thumb and elasticised back
Coloured binding tape at the end of the cuff
Available sizes: 7-11



D463

4 tips beige grain leather driver gloves
Key stone thumb and elasticised back
Hi-vis fabric patch on the back of glove
Coloured binding tape at the end of the cuff
Available sizes: 7-11



Automobile • Construction • Material Handling • Repair & Maintenance

EN388
3132X



C231

Natural grain Canadian leather gloves
Cotton lining inside and canvas cuff
Leather knuckle protected cotton drill fabric back
Coloured binding tape stitched at the end of the cuff
Available sizes: 7-11



EN388
2133X



C332

Yellow grain Canadian leather gloves
Cotton lining inside and rubberised cuff
Leather knuckle protected red cotton drill fabric back
Coloured binding tape stitched at the end of the cuff
Available sizes: 7-11



EN388
3123X



C232R

Reinforced natural grain Canadian leather gloves
Cotton lining inside and rubberised cuff
Leather knuckle protected yellow stripes cotton drill fabric back
Coloured binding tape stitched at the end of the cuff
Available sizes: 7-11



EN388
3132X



C542

Natural split Canadian leather gloves
Cotton lining inside and rubberised cuff
Leather knuckle protected blue cotton drill fabric back
Coloured binding tape stitching at the end of the cuff
Available sizes: 7-11



Automobile • Logistics • Maintenance • Material Handling



C042

Russet colored dyed split Canadian leather gloves
Cotton lining inside and rubberised cuff
Leather knuckle protected yellow cotton drill fabric back
Coloured binding tape stitched at the end of the cuff
Available sizes: 7-11

EN388
4133X



C834 JNS

Natural split Canadian leather gloves
Reinforced palm and thumb
Cotton lining inside and canvas cuff
Leather knuckle protected jeans fabric back
Coloured binding tape stitched at the end of the cuff
Available sizes: 7-11



C853

Reinforced natural split Canadian leather gloves
Cotton lining inside and rubberised cuff
Leather knuckle protected cotton drill fabric back
Coloured binding tape stitched at the end of the cuff
Available sizes: 7-11

EN388
4344X



C864

Reinforced natural split Canadian leather gloves
Cotton lining inside and rubberised cuff
Leather knuckle protected grey stripes cotton drill fabric back
Coloured binding tape stitched at the end of the cuff
Available sizes: 7-11



Automobile • Construction • Material Handling • Repair & Maintenance



C251

Natural combined Canadian leather gloves
Palm in natural grain leather and thumb back knuckle in split leather
Cotton lining inside
Cotton drill fabric back and canvas cuff
Coloured binding tape stitched at the end of the cuff
Available sizes: 7-11



C966

Natural grain Canadian leather gloves
Cotton lining inside and rubberised cuff
Leather knuckle protected hi-vis green cotton drill fabric back
Coloured binding tape stitched at the end of the cuff
Available sizes: 7-11



C242

Natural grain Canadian leather gloves
Cotton lining inside and rubberised cuff
Leather knuckle protected hi-vis orange cotton drill fabric back
Coloured binding tape stitched at the end of the cuff
Available sizes: 7-11



C265

Natural grain Canadian leather gloves
Cotton lining inside and rubberised cuff
Leather knuckle protected blue stripes cotton drill fabric back
Coloured binding tape stitched at the end of the cuff
Available sizes: 7-11



WINTER LEATHER GLOVES



Automobile • Construction • Heavy Engineering • Logistics



E223

Natural grain winter Driver gloves
Acrylic fleece lining inside
Winged thumb and elasticised back
Coloured binding tape stitched at the end of the cuff
Available sizes: 7-11



E324

Yellow grain winter Driver gloves
Fur lining inside
Winged thumb and elasticised back
Coloured binding tape stitched at the end of the cuff
Available sizes: 7-11



E332

Yellow grain winter Canadian gloves
Fur lining inside and rubberised cuff
Red cotton fabric drill back with leather knuckle protection
Coloured binding tape stitched at the end of the cuff
Available sizes: 7-11



E755

Natural grain winter Canadian gloves
Polyfill lining inside
Reinforced finger tips and back
Knitted wrist
Available sizes: 7-11



IMPACT RESISTANT LEATHER GLOVES



Construction • Heavy Engineering • Manufacturing • Material Handling



Reflective finger tip



Velcro adjusted



SIMUM metacarpal patch

T534

Metacarpal protected natural grain leather mechanical gloves
Synthetic yellow fabric back
Velcro adjustable knitted cuff
Hi-vis tape stitched on finger tips
Grey flexible "SIMUM" metacarpal patch for seamless performance
Available sizes: 7-11



IMPACT RESISTANT LEATHER GLOVES



Construction • Heavy Engineering • Manufacturing • Material Handling



TM564

Metacarpal protected beige grain leather mechanical gloves
Velcro adjustable knitted cuff
Flexible "SIMUM" metacarpal patch stitched on back
Hi-vis tape stitched on finger tips
Available sizes: 7-11



TM554

Metacarpal protected yellow grain leather mechanical gloves
Velcro adjustable knitted cuff
Hi-vis tape stitched on finger tips
Flexible "SIMUM" metacarpal patch stitched on back
Available sizes: 7-11



TM274

Metacarpal protected natural grain leather mechanical gloves
Velcro adjustable knitted cuff
Natural grain palm with black spandex fabric back
Flexible "SIMUM" metacarpal patch stitched on back
Available sizes: 7-11



TM284

Metacarpal protected natural grain leather mechanical gloves
Velcro adjustable knitted cuff
Natural grain palm with black spandex fabric back
Flexible "SIMUM" metacarpal patch stitched on back
Available sizes: 7-11



IMPACT RESISTANT LEATHER GLOVES



Construction • Heavy Engineering • Manufacturing • Material Handling



NEW



Flexible DUDHWA®



Segmented finger
for adjustability



Breathable fabric
back

TM294

Metacarpal protected high cut resistant leather driver gloves
Glass fiber blended para-aramid lining inside
Green flexible "DUDHWA®" impact resistant patch on back
Natural grain palm and elasticized back
Available sizes: 7-11



Construction • Heavy Engineering • Manufacturing • Material Handling



BE2258

Metacarpal protected high cut resistant leather driver gloves
Glass fiber blended para-aramid lining inside
Blue flexible "SIMUM" metacarpal for seamless performance
Natural grain and elasticized back
Available sizes: 7-11



BE2208

Metacarpal protected natural grain leather driver gloves
Yellow flexible "SIMUM" metacarpal for seamless performance
Natural grain and elasticized back
Available sizes: 7-11



BE2258 H

Metacarpal protected high cut resistant leather gloves
Glass fiber blended para-aramid fabric lined palm
Blue flexible "DUDHWA" metacarpal for seamless performance
Breathable fabric and elasticized back
Available sizes: 7-11



DE2398

Metacarpal protected high cut resistant leather gloves
Glass fiber blended para-aramid fabric lined palm
Red flexible "DUDHWA" metacarpal for seamless performance
Breathable fabric and elasticized back
Available sizes: 7-11



Construction • Heavy Engineering • Manufacturing • Material Handling



M464

Natural grain leather glove in mechanical style
Synthetic fabric back
Coloured binding tape stitched at the end of the cuff
Available sizes: 7-11



M254

Natural grain leather glove in mechanical style
Spandex fabric back
Velcro adjustable cuff
Available sizes: 7-11



M354

Yellow grain leather glove in mechanical style
Spandex fabric back
Coloured binding tape stitched at the end of the cuff
Available sizes: 7-11



M654

Natural grain leather glove in mechanical style
Red coloured cotton fabric back
Velcro adjustable cuff
Available sizes: 7-11



EN388

3122X

Automobile • Iron & Steel • Metallurgy • Repairs & Maintenance



F224

Grain leather welder glove with split cuff
Natural split cuff 15 cm in length
Excellent tear resistant
Good dexterity
Available sizes: 8-11



F214

Goat grain leather welder glove with split cuff
Natural split cuff 15 cm in length
Ideal for MIG and TIG application
Available sizes: 8-11



EN388 3243X EN407 413X4X EN12477 Type A



F234

Natural combined welder gloves
Grain leather palm with split back
Natural split cuff 15 cm in length
Available sizes: 8-11



EN388 3243X EN407 413X4X EN12477 Type A



F222DP

Natural grain leather welder gloves
External reinforcement on palm and thumb
Band of grain leather on split cuff
Natural split cuff 8 cm in length
Available sizes: 8-11



EN388 3243X EN407 413X4X

Automobile • Iron & Steel • Metallurgy • Repairs & Maintenance



M-F524

Natural split leather welder gloves
Split leather cuff 15 cm in length
Excellent tear resistance
Available Sizes: 8-11

EN388 2133X EN407 413X4X EN12477 Type A



F422DP

Reinforced natural split leather welder gloves
Natural split cuff 15 cm in length
Excellent tear resistance
Available Sizes: 8-11

EN388 2133X EN407 413X4X



F522

Natural split leather welder gloves
Split cuff 7 cm in length
Excellent tear resistance
Available Sizes: 8-11

EN388 2133X EN407 413X4X



F522DP

Reinforced natural split leather welder gloves
Split cuff 7 cm in length
Excellent tear resistance
Available Sizes: 8-11

EN388 2133X EN407 413X4X



Automobile • Iron & Steel • Metallurgy • Repairs & Maintenance



MF437

Dyed split leather welder gloves
Back and thumb made from single piece leather
Cotton fleece lining inside
Available Sizes: 8-11

EN388 2133X EN407 413X4X EN12477 Type A



F637

Dyed split leather welder gloves
Back and thumb made from single piece leather
Reinforcement on the thumb
Available Sizes: 8-11



KWS15

100% para aramid mitten style leather gloves
Fully insulated for high temperature resistance
Soft split natural leather cuff
Available Sizes: 8-11



H468

Water repellant full grain leather welder gloves
Sewn with para-aramid thread
Aluminised polyester insert
20 cm split leather cuff with adjustable velcro
Contact heat resistivity is upto 500°C for >15 sec
Available Sizes: 8-11



Automobile • Iron & Steel • Metallurgy • Repairs & Maintenance



KD4377A

Heat and flame resistant welder glove 600 GSM
Woven Para aramid glove 15 cm natural split leather cuff,
Cotton lining inside Contact heat resistivity is
upto 200 degreeC (for 15 sec)



KW4377A

Heat and flame resistant welder glove
600 GSM woven Para aramid glove
15 cm para aramid cuff,
Cotton lining inside
Contact heat resistivity is upto 200 degreeC (for 15 sec)



KW1277A

Heat and flame resistant welder glove
600 GSM woven Para aramid glove with natural split leather back
15 cn natural split leather cuff
Cotton lining inside
Contact heat resistivity is upto 200 degreeC (for 15 sec)



Automobile • Iron & Steel • Metallurgy • Repairs & Maintenance



KD4377B

Heat and flame resistant welder glove
480 GSM woven Para aramid glove
With 15 cm natural split leather cuff,
Cotton lining inside
Contact heat resistivity is upto 200 degreeC (for 15 sec)



KW4377B

Heat and flame resistant welder glove 480 GSM
woven Para aramid glove 15 cm para aramid cuff,
Cotton lining inside
Contact heat resistivity is upto 200 degreeC (for 15 sec)



KW1277B

Heat and flame resistant welder glove 480 GSM
woven Para aramid glove with natural split leather back
15 cm natural split leather cuff
Cotton lining inside Contact heat resistivity is upto 200 degreeC (for 15 sec)



WELDER GLOVES



Automobile • Iron & Steel • Metallurgy • Repairs & Maintenance



Reinforced palm



Elongated cuff

F834

Dyed split leather welder gloves

Back and thumb made from single piece leather

Leather reinforcement on palm

Non woven lining inside palm, cuff lined with jeans fabric

Available sizes: 8-11

EN388 4244X EN407 433X4X EN12477 Type A



Automobile • Iron & Steel • Metallurgy • Repairs & Maintenance



H224K

Natural grain leather welder gloves
Knitted para-aramid and cotton plated liner
Sewn with para-aramid thread
Hi-vis fabric trimming on cuff
Available sizes: 8-11



H044K

Yellow dyed split leather welder gloves
Seamless para-aramid lining on the palm
Sewn with para-aramid thread
Available sizes: 8-11



F290D

Natural grain leather welder gloves
External reinforcement in palm and thumb
Full fleece palm lining
9 cm canvas cuff and back
Available sizes: 8-11



F667

Dyed blue 100% split leather welder gloves
Back and cuff in single piece leather
Yellow split leather palm and knuckle protection
Lined with cotton canvas
Available sizes: 8-11



Automobile • Iron & Steel • Metallurgy • Repairs & Maintenance



F687

Dyed red 100% split leather welder gloves
Back and cuff in single piece leather
Yellow split leather palm and knuckle protection
Lined with cotton canvas
Available sizes: 8-11



F962

Natural split leather mittens
Lined with cotton canvas
Reinforced keystone thumb
Available sizes: 8-11



HAMK

Fire and heat resistant welder gloves
Aluminized preox fabric used at back
100% wool lining
Sewn with para-aramid thread
Lining in 100% wool
Available sizes: 8-11



H544K

Fire and heat resistant welder gloves
100% wool lining
Sewn with para-aramid thread
Heat resistant upto 250°C
Available sizes: 8-11



Automobile • Iron & Steel • Metallurgy • Repairs & Maintenance



KPZ15

2 finger leather mittens with para-aramid palm
Heat resistant russet split in 15cm cuff
Glove interlined with thick acrylic knit fabric
Sewn with para-aramid thread
Available sizes: 8-11



KWL15

Welder leather glove with para-aramid palm
Self extinguishing para-aramid fibre
Heat resistant russet split 15 cm cuff
Gloves interlined with thick acrylic knit fabric
Sewn with para-aramid thread
Available sizes: 8-11



KCL15

Welder leather glove with seamless para-aramid palm
Heat resistant russet split 15 cm cuff
Gloves interlined with cotton lining
Sewn with para-aramid thread
Available sizes: 8-11



H515A

Fire and heat resistant welder gloves
Alumunised preox fabric used at back and thumb
15 cm split cuff in length
Sewn with para-aramid thread
Palm lined with fleecy fabric and canvas at the back of the cuff
Available sizes: 8-11



Automobile • Iron & Steel • Metallurgy • Repairs & Maintenance



Hood

EN 11611:2015 Class 2 A1

100% natural split leather welder hood
Front velcro closure
Covers head and neck
Free size also available in grain leather



Jacket

EN 11611:2015 Class 2 A1

Leather welder jacket in 100% natural grain
Sewn with para-aramid thread
Velcro fastening on the front placket
Available in different leather and fabric combination
Available sizes: S-XXL



Trouser

EN 11611:2015 Class 2 A1

Leather welder trouser in 100% natural grain
Sewn with para-aramid thread
Metallic stud button for fly closure
Available in different leather and fabric combination
Available sizes: S-XXL



Automobile • Iron & Steel • Metallurgy • Repairs & Maintenance



Sleeves

EN 11611:2015 Class 2 A1

Leather arm sleeves in 100% natural grain
Sewn with para-aramid thread
Free size also available in split leather



Leg Guards

EN 11611:2015 Class 2 A1

Leather leg guards in 100% natural grain
Velcro fastening to ensure proper grip
Free size also available in split leather



Tool Bag

Leather welder tool bag in 100% natural grain
Multi pockets tool bag for manifold applications
Available in split leather and different design



Leather Apron

Leather welder apron in 100% natural grain
Leather belts and string for comfortable wear
Available in split leather, different designs and fabric composition
Available sizes: S-XXL



A man in a dark blue industrial work uniform with reflective silver stripes on the sleeves and chest, wearing an orange safety helmet and a communication device, is looking at a tablet in a factory setting. The background shows industrial equipment and pipes. The image is framed by a white geometric pattern on the left and bottom, and a red banner on the right containing text.

BODY PROTECTION

Mallcom's exclusive workwear ranges from light-weight to heavy-duty industrial work wear, profile clothing, winter protection, uniforms, and corporate casual wear. These provide top-notch protection and are utilized in several sectors such as hospitality, health-care and for general industrial purposes. The special fabric is also custom-made and it protects the wearer in environments such as heat, fire, and extremely cold temperatures.

Healthcare • Pharmaceutical • Bio technology • Chemical

NEW



JD7AY

Type 4, 5 & 6 Cat III

Light weight 60 GSM Disposable coverall for infectious disease control
Excellent barrier against dry particles and certain limited liquid chemical splash
Coverall made of Breathable water resistant SSMMS fabric
Elastic cuffs, waist and ankles for a better fit and freedom of movement
Colour: White



NEW



JB8AY

Seam sealed Light weight 80 GSM Disposable coverall for infectious disease control
Excellent barrier against dry particles and certain limited liquid chemical splash
Laminated breathable material
Elastic cuffs, waist and ankles for a better fit and freedom of movement
Colour: White



NEW



JB8GZ

Laminated disposable Shoe covers to protect from bio hazard risk, and harmful particles
80 GSM Laminated disposable Shoe Covers
8 mm elastic closure
Colour - white



Healthcare • Pharmaceutical • Bio technology • Chemical



LA2EZ

Disposable gown to protect from biohazardous risks e.g. liquid and particles
Non-laminated 40 GSM, non-woven fabric
Strap fastener system closure
Colour - Hospital blue



MP29G

Reuseable gown to protect from bio hazardous risks e.g. liquid and particles
Coated 90 GSM, woven poltester fabric with PU coating
Strap fastener system closure
Colour Navy Blue



Agriculture • Automobile • Chemical • Logistics



COLOGNE

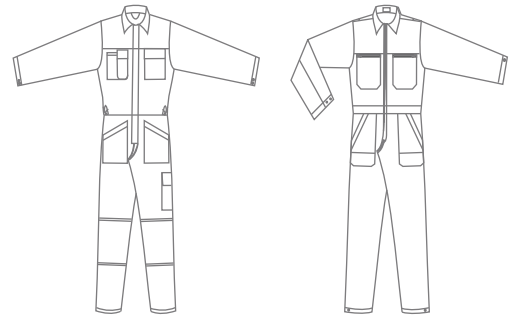
100% cotton - 240GSM

Work coverall with waist belt and regular sleeves

Front opening with spiral zipper concealed with flap

Multiutility pockets and bartack reinforcements with shell fabric at knee

All edges serged with overlock seams



MASSY

100% cotton - 240GSM

Trousers with elasticised waist band and belt loops

Utility pockets and zipper at fly

Bartack reinforcement with shell fabric at knee

Raw edges overlocked and Eyelet button hole



Navy Blue



Royal Blue



Bottle Green



Grey



Red



Black

Available size: XS - XXL

Agriculture • Automobile • Chemical • Logistics



BASEL

100% cotton - 240GSM

Jacket without waist band, cuff and regular collar

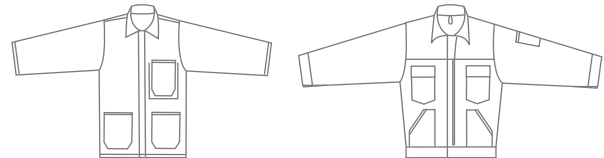
Mobile pocket provided additionally

Other utility pockets on the jacket

Flaps secured with snaps, edges overlapped

Pockets stitched with Double needle lock stitch.

Bar tacks for special reinforcement.



SOFIA

100% cotton - 240GSM

Bib trousers with regular braces and zipper in fly

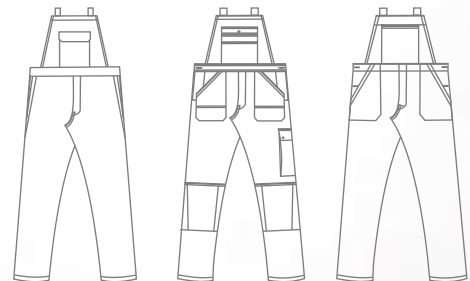
Single pocket on bib with flap secured with snaps

Side openings with jeans button closure

Utility pockets provided. All raw edges overlapped with 5 thread

Joins attached with 2 needle lock stitch

Bar tacks on seam edges for reinforcements



Navy Blue



Royal Blue



Bottle Green



Grey



Red



Black

Available size: XS - XXL

Automobile • Construction • Manufacturing • Mining



KIEV

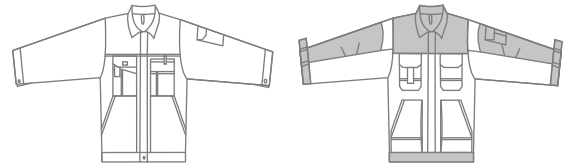
100% cotton - 260GSM

Heavy duty Bi coloured Jacket.

Multiutility Pockets

Front Closure with Zipper and covered by flap, snap buttons on pockets

Knitted cuff and part elasticated waist



GRANADA

100% cotton - 260GSM

Bib trousers in heavy twill fabric;

Stylised with contrast color combination

Multi pockets

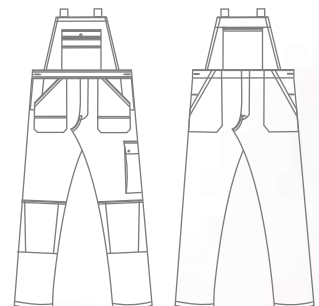
Fly closure with zipper;

Bar tacks for extra reinforcement

Knee guards with shell fabric

Utility pockets

Elasticated brace for comfort and ease of movement



Navy Blue



Royal Blue



Bottle Green



Grey



Red



Black

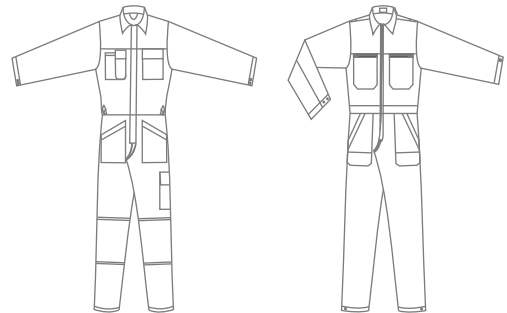
Available size: XS - XXL

Automobile • Construction • Manufacturing • Mining



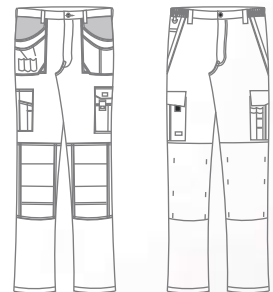
BILBAO

100% cotton - 260GSM
 Coverall in heavy twill fabric
 Front closure with 2 way zipper and utility pockets
 Designed for exposure in high abrasion work environment
 Bar tacks for extra reinforcements



HAMBURG

100% cotton - 260GSM
 Heavy duty trousers with multi-utility pockets
 Cordura(r) knee protection reinforcement and fly zipper
 Opening from top and secured with velcro
 Special darts to hold the knee guard in place
 Cordura patches at the bottom hem of leg as well
 Presence of D ring and Nylon webbing tapes to facilitate multi storage
 Double loops in the waist belt and eye let button hole



Navy Blue



Royal Blue



Bottle Green



Grey



Red



Black

Available size: XS - XXL

Automobile • Construction • Manufacturing • Mining



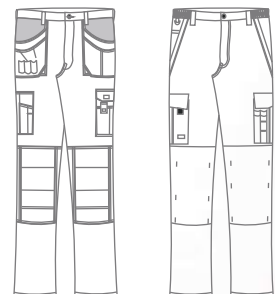
COSTA

100% cotton - 260GSM
Vest in heavy duty fabric
Multi utility pockets
Zipper closure in front
comfort fit with wider armhole
Bar tack for extra reinforcement



BERLIN

100% cotton - 260GSM
Trousers with heavy duty fabric
Stretch fabric at back seat for extra ease of movement
Multi utility pockets
Waist belt with elastics and belt loops



Navy Blue Royal Blue Bottle Green
Available size: XS - XXL

Grey

Red

Black

Automobile • Construction • Manufacturing • Mining



HAMILTON

100% cotton - 260GSM

Bi-coloured heavy duty jacket.

Hi-vis reflective tape of 2" in double rows

present on chest and sleeves in horizontal fashion

Front closure zip concealed with flap and snap buttons

Turtle neck collar. Two welt chest pockets covered with flaps

Two down pockets with lateral openings

Mobile and pen pocket on sleeve

Sleeve cuff and waist belt adjusted with snap button



BENDIGO

100% cotton - 260GSM

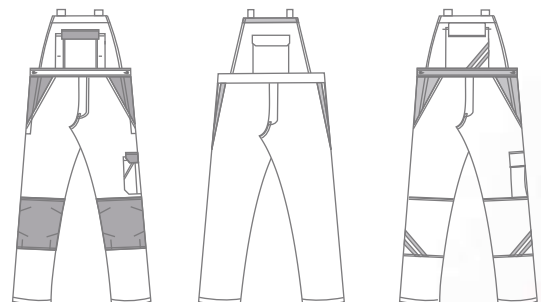
Bib Trousers in Bi-coloured combination

50 mm reflectors on leg in 2 rows

Multiutility Pockets and One phone Pocket

Gallies in Shell fabric with Plastic buttons

Waist Adjustments and Bartacks for reinforcements



Navy Blue



Royal Blue



Bottle Green



Grey



Red



Black

Available size: XS - XXL

Food & Beverage • Hospitality • Housekeeping • Retail



BIEL

65/35% polycotton - 210GSM

Bib apron in polycotton.

Contrast flaps and piping and straps

Welt pocket on the front bib area and closed with snap button

Neck strap adjusted with snap button for length

One welt pocket on the right side with lateral entry

Tied at the back with snap button and adjustable for width



Navy Blue



Red



Black

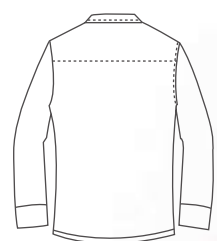
Available size: 100X90cm free size



OSLO

65/35% polycotton - 210GSM

Full sleeve white tunic Collars and Closure with snap buttons



Navy Blue



Royal Blue



Bottle Green



Grey



Red



Black

Available size: XS - XXL

Food & Beverage • Hospitality • Housekeeping • Retail



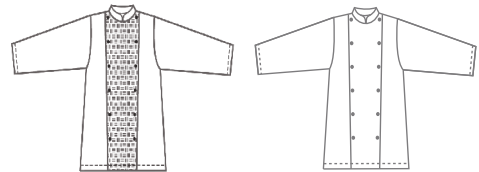
GENEVA

100% cotton - 270GSM Satin

Chef's jacket in satin fabric

Double breasted with detachable popper buttons

Mandarin collar and French cuff



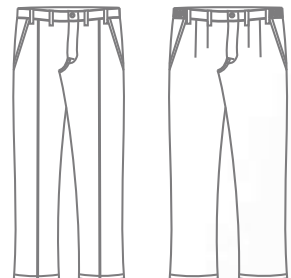
ZURICH

65/35% polycotton - 210GSM

Chef's trousers in hound's tooth check fabric

Regular waist belt with belt loops and elasticated back

Two side pockets with diagonal opening and one back patch pocket



White



Black



Pepita



Burgundy

Available size: XS - XXL

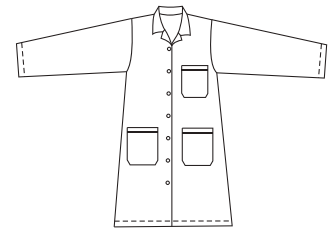
Biotechnology • Chemical • Healthcare • Pharmaceutical



NANCY

65/35% polycotton - 210GSM
White coat with snap fastening in front
Full Sleeve and back slit
Multi pockets

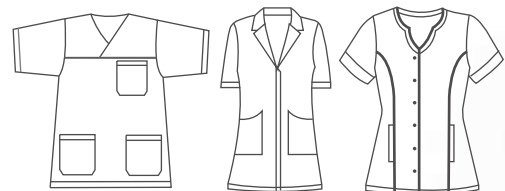
OEKO-TEX®
CONFIDENCE IN TEXTILES
STANDARD 100
2017OK0969 AITEX
Tested for harmful substances.
www.oeko-tex.com/standard100



ATHENS

65/35% polycotton - 210GSM
Ladies Tunic with short sleeve with V neck
Front closure with concealed snap buttons
and top button visible
Stylised contrast piping along princess seam
for smart look

OEKO-TEX®
CONFIDENCE IN TEXTILES
STANDARD 100
2017OK0969 AITEX
Tested for harmful substances.
www.oeko-tex.com/standard100



Available size: XS - XXL

Biotechnology • Chemical • Healthcare • Pharmaceutical



EDINBURGH

65/35% polycotton - 190GSM

Nurse's dress with long sleeve and front closure with button

Double breasted with overlapping feature for ease of movement



OEKO-TEX®
CONFIDENCE IN TEXTILES
STANDARD 100
2017OK0969 AITEX
Tested for harmful substances.
www.oeko-tex.com/standard100



TRAUN

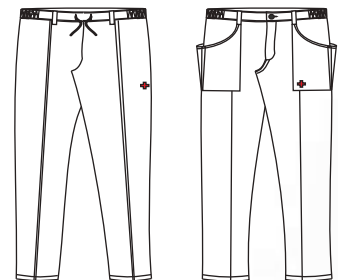
65/35% polycotton - 210GSM

Medical unisex trousers with elasticated waist and draw cord

Bottom hems of trousers with snap buttons



OEKO-TEX®
CONFIDENCE IN TEXTILES
STANDARD 100
2017OK0969 AITEX
Tested for harmful substances.
www.oeko-tex.com/standard100



Hospital Green Hospital Blue White

Available size: XS - XXL

Chemical • Iron & Steel • Metallurgy • Petrochemical



FR reflective Tape



Chest pocket with zip closure



1.5" width NFPA certified FR elastic

MINSK

88/12% cotton nylon - 240GSM

Flame retardant summer coverall

Two flap covered patch pockets on chest

Two cross pockets on hip (with side entry)

Two back patch pockets & one tool pocket at right leg

Snap buttons and FR zipper closure

FR reflective tape on arms and legs



Navy Orange



Red

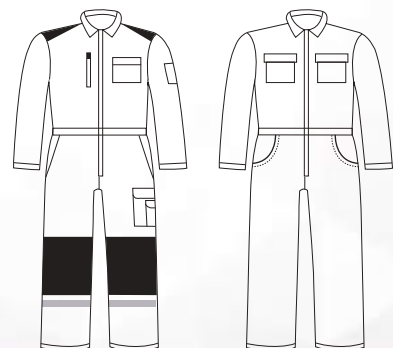


Royal Blue



Grey

Available size: XS - XXL



Chemical • Iron & Steel • Metallurgy • Petrochemical

NEW



RIGA

88/12% cotton nylon - 190GSM

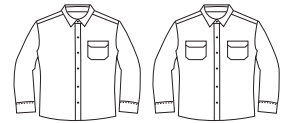
Flame retardant summer shirt

FR Button closure system

Two front chest pockets and snap buttons closure



OEKO-TEX®
CONFIDENCE IN TEXTILES
STANDARD 100
2017OK0969 AITEX
Tested for harmful substances.
www.oeko-tex.com/standard100



NEW



BUCHAREST

88/12% cotton nylon - 190GSM

Flame retardant summer trouser

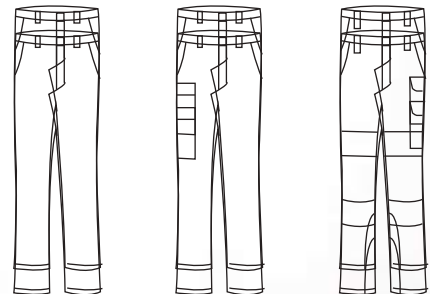
Front snap button and metal

FR zipper closure system

Two back pockets



OEKO-TEX®
CONFIDENCE IN TEXTILES
STANDARD 100
2017OK0969 AITEX
Tested for harmful substances.
www.oeko-tex.com/standard100



Red Royal Blue Navy Orange Grey

Available size: XS - XXL

Chemical • Iron & Steel • Metallurgy • Petrochemical



ZAGREB

Shell: 88/12% cotton nylon - 240GSM

Insulation: 75/25% wool modacrylic

Lining: 100% cotton - 180GSM

Insulated flame retardant jacket

Two slant chest pockets closed with hidden FR zipper

Front FR zipper closure covered with flaps

FR reflective tape on arms



WARSAW

Shell: 88/12% cotton nylon - 240GSM

Insulation: 75/25% wool modacrylic

Lining: 100% cotton - 180GSM

Insulated flame retardant coverall.

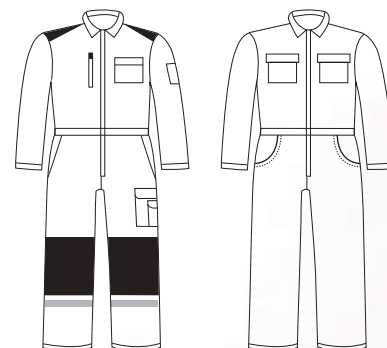
Two patch pockets on chest

Two cross pockets on hip (with side entry)

Two back patch pockets

One tool pocket at right leg.

FR reflective tape on arms and legs



Standard colour range



Navy Orange Red Royal Blue Grey

Available size: XS - XXL

Chemical • Iron & Steel • Metallurgy • Petrochemical

NEW



LISBON

Shell: 88/12% cotton nylon - 240GSM

Insulation: 75/25% wool modacrylic

Lining: 100% cotton - 180GSM

Insulated flame retardant parka with button and zip closure fastener

Two slant chest pockets, with metal zipper closure covered by flap

Two hip pockets with hidden snap button fastener covered by flap & a patch pocket at left sleeve

FR Reflective tape is used around the sleeve



NEW



ISTANBUL

Shell: 88/12% cotton nylon - 240GSM

Insulation: 75/25% wool modacrylic

Lining: 100% cotton - 180GSM

Insulated flame retardant Bib trouser

Button with zip closure system

One small chest pocket at the left side on bib

Elastic braces with buckles at front with adjuster

FR Reflective tape on legs



Standard colour range



Navy Orange



Red



Royal Blue



Grey

Available size: XS - XXL

Chemical • Iron & Steel • Metallurgy • Petrochemical

NEW



Zebra reflective tape
50mm width



Zip and velcro adjusted
closure system



Side pocket with
velcro closure

PARIS

100% cotton - 240 GSM

Bi-coloured flame retardant coverall

Two front pockets covered with flaps

Front closure by brass FR zipper covered with flap

FR zebra reflective striping of 50 mm across chest, arms, legs & vertical row on shoulders

Sleeves adjusted by FR velcro



Standard colour range



Bi coloured
Orange & Navy Blue
Available size: XS - XXL

EN ISO 11611



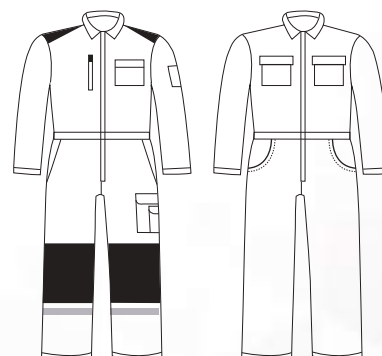
Class 1 A1

EN ISO 16112



A1, B1, C1

OEKO-TEX®
CONFIDENCE IN TEXTILES
STANDARD 100
2017 OK 969 AITEX
Tested for harmful substances.
www.oeko-tex.com/standard100



Chemical • Iron & Steel • Metallurgy • Petrochemical

NEW



HELSINKI

100% cotton - 190 GSM
Khaki colour flame retardant shirt
Two front pockets covered with flaps; front closure by metal snap button
Sleeves adjusted by FR velcro



EN ISO 11611

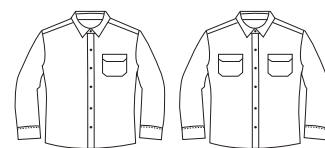


Class 1 A1

EN ISO 16112



A1, B1, C1



NEW



COPENHAGEN

100% cotton - 190 GSM
Khaki colour flame retardant trouser
All pockets covered with flaps; front closure by metal snap button and FR zipper



EN ISO 11611



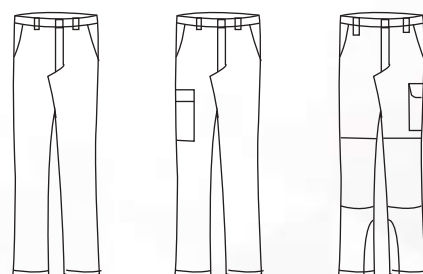
Class 1 A1

EN ISO 16112

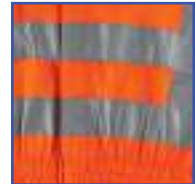


A1, B1, C1

OEKO-TEX®
CONFIDENCE IN TEXTILES
STANDARD 100
201700999 A1TEX
Tested for harmful substances.
www.oeko-tex.com/standard100



Chemical • Iron & Steel • Metallurgy • Petrochemical



50mm width
reflective tape



Knee pocket



Snap button closure

FLORENCE

60/40% cotton-poly - 300GSM

Orange hi vis coverall with reflective tape

Cat II. reflective tape of 50 mm across vertically on chest,
Horizontally on arms and legs

Twill weave construction



Standard colour range



Orange

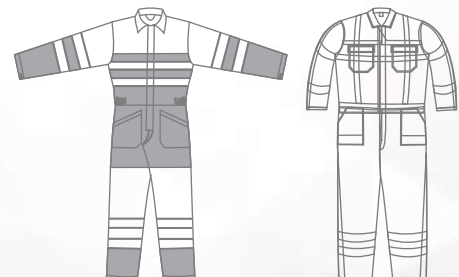


Yellow



Lemon Green

Available size: XS - XXL



Aerospace & Aviation • Construction • Logistics • Oil & Gas



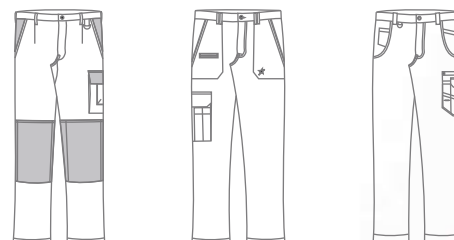
VIENNA

60/40% cotton poly - 300GSM
Bi colored HI Vis Jacket with Front Closure by Zipper and flaps closed with Velcro
Welt Pockets on the Front with zipper closure
Adjustable waistbelt and Turtle collar
Action back Pleats and Bartack for Reinforcements
Twill weave construction



BRUSSELS

60/40% cotton poly - 300GSM
Bi-colored hi-vis trousers with double band of 50 mm reflective tape
Fabrics conform to EN471 norm
Waist with elastics on either side
Two side pockets and one thigh pocket with flap
One patch pocket at back
Fly with zipper
Seams with overlock and 2 needle lockstitch
Twill weave construction



Standard colour range



Orange/Navy Blue Orange/Royal Blue Yellow/Bottle Green Yellow/Navy Blue

Available size: XS - XXL

Aerospace & Aviation • Construction • Logistics • Oil & Gas



STOLKHOLM

60/40% cotton poly - 300GSM

Safety tool vest in hi-vis fabric

Inner lining with mesh fabric

Plackets with visilon zipper

Two patch pockets with lateral entry and on the patch pockets presence of additional mobile pocket on the right and a bigger pocket on the left

Slots are safety harness entries

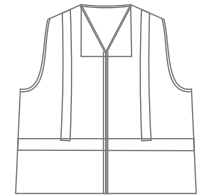
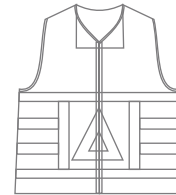
Reflective stripes of 50 mm on the front along the front placket and horizontally at the bottom hem

Criscrossed over centre back



Orange Yellow

Available size: XS - XXL



ROME

60/40% cotton poly - 300GSM

Trousers in hi-vis fabric of poly cotton blend

2" reflective stripes in double rows horizontally across the leg above the bottom hem

Also a single row of reflective striping along the out seam from waist till bottom hem

Fly closure with zipper and waist belt secured with plastic button

Presence of thigh pocket

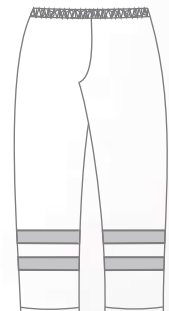
Two side pockets and one back patch pocket

Elasticized waist



Hi-Vis Orange

Available size: XS - XXL



Aerospace & Aviation • Construction • Logistics • Oil & Gas



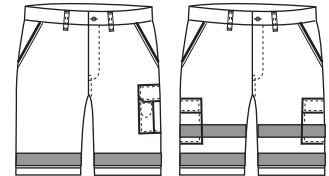
AVIGNON

60/40% cotton poly - 300GSM
Bi-colored shorts in hi-vis fabric
Wait gripper inside waistbelt
Cordura lined hanging pockets, regular pockets, tool pocket in knee
Thick webbing tape for holding tools
Pockets with extra room
Double row of reflectors
Flaps closed with Velcro



Yellow Navy Blue

Available size: XS - XXL



AMSTERDAM

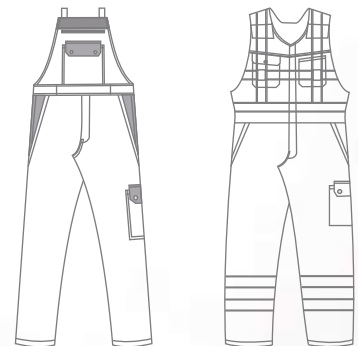
60/40% cotton poly - 300GSM
Bib trousers in hi-vis fabric with 2" reflective striping placed over the garment in compliance with CAT III requirements
Multi utility pockets front closure with zipper
Bar tacks for reinforcement



Orange

Red

Available size: XS - XXL



Automobile • Heavy Engineering • Metallurgy • Petrochemical



Reflective tape for better visibility



Multinorm protection



Velcro adjusted zip closure

PORTO

60/40% cotton poly - 300GSM

Hi vis Flame Retardent Lined 3 layer coverall

Polyfill quilted FR Padding inside

All FR trims

Multipocket

50 mm reflectors on legs Arms and body



Standard colour range



Orange

Available size: XS - XXL

Automobile • Heavy Engineering • Metallurgy • Petrochemical



NUREMBERG

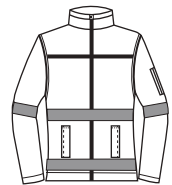
60/40% cotton poly - 300GSM

Jacket made to comply with anti-flame and antistatic performance

All hidden pockets and covered trims

Openings doubly secured with zipper and flaps

Turtle neck collar and extended back hem

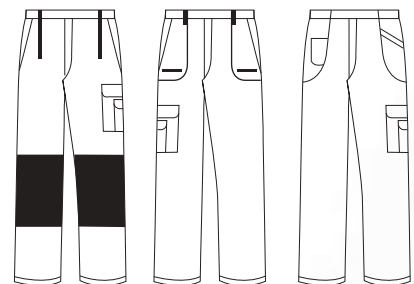


SALZBURG

60/40% cotton poly - 350GSM

Trousers made to comply with anti-flame and antistatic performance

All Hidden multi pockets and covered trims



Standard colour range



Orange

Available size: XS - XXL

Aviation • Construction • Logistics • Petrochemical



DARWIN

Shell: 50/50% Beaver® polyester - 260GSM

Lining : 100% cotton - 180GSM

Insulation: 100% Polyfil polyester - 200GSM

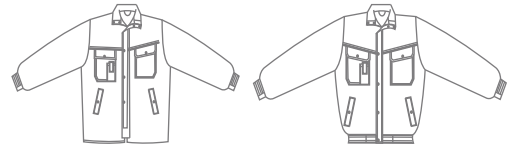
Three-layered multi-colour winter jacket with detachable liner

Fleece lined collar

All pockets with vertical opening

All pockets closed with injection moulded zipper and concealed with flap

Knitted cuff for snug fit



DUBLIN

Shell: 50/50% Beaver® polyester - 260GSM

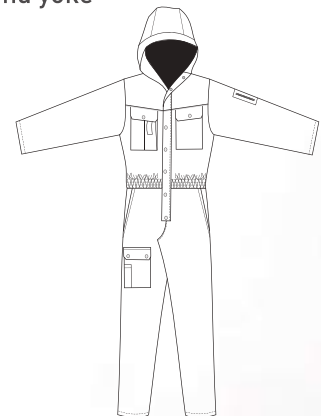
Lining : 100% cotton - 180GSM

Insulation: 100% Polyfil polyester - 200GSM

Fur lined coverall upto torso and bottom quilted
Zipper closure and additonal storm flap on zipper

Two chest pockets, two side pockets, one back pocket
one thigh pocket, one sleeve pocket with pen slot

All pockets with flap and button closure,
elasticated waist Reflective piping around yoke



Standard colour range



Available size: XS - XXL

Aviation • Construction • Logistics • Petrochemical



PRAGUE

Shell: 50/50% Beaver® polyester - 260GSM

Lining : 100% cotton - 180GSM

Insulation: 100% Polyfil polyester - 200GSM

Winter insulated parka with 3 layers and detachable hood

Two chest pocket and two bottom pockets

All pockets secured with snap fasteners

Front closure with zipper and additional

4 inch flap secured with buttons



BUNBURY

Shell: 50/50% Beaver® polyester - 260GSM

Lining : 100% cotton - 180GSM

Insulation: 100% Polyfil polyester - 200GSM

Bi-color bodywarmer with quilting

Vislon zipper with storm flap

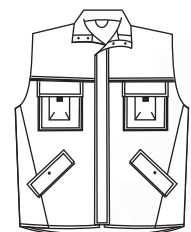
Metal buttons with plastic cap

Two chest pockets with additional

mobile pocket on right chest

Bottom pocket entry angled to allow

easy entry of palm into pocket



Standard colour range



Available size: XS - XXL

Hospitality • Logistics • Paints • Tourism



TALLINN

100% cotton - 10 Oz

Blue denim shirt

One chest pocket and two side pockets at front

Front button closure and flap cover



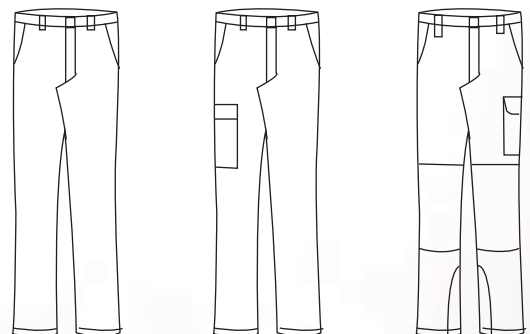
MADRID

100% cotton - 14 Oz

Blue denim trouser

Two front and two back pockets

Brass zipper closure with semi auto lock slider



Available size: XS - XXL

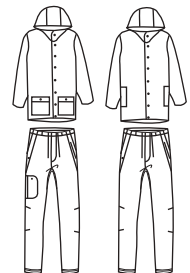
NEW



STRATUS

100% Polyester coated with PU
Rainwear garment jacket and trouser in single colour
Silver reflective piping on jacket and pants
Two utility pockets with lateral openings
Front closure by zipper and secured with flap and Velcro
Detachable hood with draw string adjuster
Elasticated pull on pant
Leg bottom width adjustable with velcro

EN343
3
2



NEW



NIMBUS

Pant and jacket set
Front closure by zipper and secured with flap and Velcro
Detachable hood with draw string adjuster
Elasticated pull on pant
Leg bottom width adjustable with Velcro
Flaunt side pocket
Waterproof seamsealing

EN343
3
2



Standard colour range

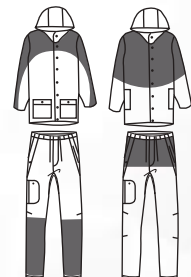


Navy Blue



Grey

Available size: XS - XXL



FEET PROTECTION

Pioneering the manufacturing of Direct Injected Polyurethane Safety footwear, Mallcom produces sturdy shoes that can tackle challenges in construction, mining, metallurgical and other manufacturing industries. With an annual production capacity of more than a million pairs, Mallcom is the leading safety shoe manufacturer and distributor from India.

Heavy Engineering • Iron & Steel • Oil & Gas • Repairs & Maintenance

NEW



FREDDIE G23

Aesthetically designed Mid ankle double density safety shoe
Blue & black stylish knitted upper with reflective design
Double density PU sole with TPU shock absorber
Composite toe cap
Available sizes: 36-47



NEW



FREDDIE K23

Aesthetically designed Mid ankle double density safety shoe
Red & black stylish knitted upper with reflective design
Double density PU sole with TPU shock absorber
Composite toe cap
Available sizes: 36-47



NEW



FREDDIE J23

Aesthetically designed Mid ankle double density safety shoe
Green & black stylish knitted upper with reflective design
Double density PU sole with TPU shock absorber
Composite toe cap
Available sizes: 36-47



Heavy Engineering • Iron & Steel • Oil & Gas • Repairs & Maintenance

NEW



FREDDIE H23

Aesthetically designed Mid ankle double density safety shoe
Black & Grey stylish knitted upper with reflective design
Double density PU sole with TPU shock absorber
Composite toe cap
Available sizes: 36-47



NEW



FREDDIE G22

Aesthetically designed Mid ankle double density safety shoe
Blue & black stylish knitted upper
Double density PU sole with TPU shock absorber
Composite toe cap
Available sizes: 36-47



NEW



FREDDIE K22

Aesthetically designed Mid ankle double density safety shoe
Red & black stylish knitted upper
Double density PU sole with TPU shock absorber
Composite toe cap
Available sizes: 36-47



Heavy Engineering • Iron & Steel • Oil & Gas • Repairs & Maintenance

NEW



FREDDIE J22

Aesthetically designed Mid ankle double density safety shoe

Green & black stylish knitted upper

Double density PU sole with TPU shock absorber

Composite toe cap

Available sizes: 36-47



NEW



FREDDIE H22

Aesthetically designed Mid ankle double density safety shoe

Black & Grey stylish knitted upper

Double density PU sole with TPU shock absorber

Composite toe cap

Available sizes: 36-47



NEW



FREDDIE G21

Aesthetically designed Mid ankle double density safety shoe

Blue & black stylish knitted upper

Double density PU sole with TPU shock absorber

Composite toe cap

Available sizes: 36-47



Heavy Engineering • Iron & Steel • Oil & Gas • Repairs & Maintenance

NEW



FREDDIE J21

Aesthetically designed Mid ankle double density safety shoe

Green & black stylish knitted upper

Double density PU sole with TPU shock absorber

Composite toe cap

Available sizes: 36-47



NEW



FREDDIE K21

Aesthetically designed Mid ankle double density safety shoe

Red & black stylish knitted upper

Double density PU sole with TPU shock absorber

Composite toe cap

Available sizes: 36-47



NEW



FREDDIE H21

Aesthetically designed Mid ankle double density safety shoe

Black & Grey stylish knitted upper

Double density PU sole with TPU shock absorber

Composite toe cap

Available sizes: 36-47



Heavy Engineering • Iron & Steel • Oil & Gas • Repairs & Maintenance



Breathable knitted upper



Shock absorbent
Oliver mould



Direct injected
Aesthetically designed
bicoloured PU sole

FREDDIE J02

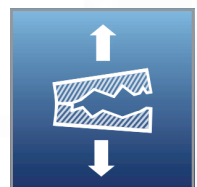
Low ankle double density safety shoe

Green & black stylish knitted upper

Double density PU sole

Composite toe cap

Available sizes: 36-47



Tear strength
is 2.8x times

Heavy Engineering • Iron & Steel • Oil & Gas • Repairs & Maintenance

NEW



FREDDIE J01

Low ankle double density safety shoe
Green with black blended knitted upper
Double density PU sole
Composite toe cap
Available sizes: 36-47



NEW



FREDDIE K01

Low ankle double density safety shoe
Orange with black blended knitted upper
Double density PU sole
Composite toe cap
Available sizes: 36-47



NEW



FREDDIE G03

Low ankle double density safety shoe
Blue with black stylish knitted upper
Double density PU sole
Composite toe cap
Available sizes: 36-47



Electronics • Hospitality • Logistics • Pharmaceutical

NEW



FREDDIE H02

Low ankle double density safety shoe
Grey with black knitted upper
Double density PU sole
Composite toe cap
Available sizes: 36-47



NEW



FREDDIE K02

Low ankle double density safety shoe
Orange with black stylish knitted upper
Double density PU sole
Composite toe cap
Available sizes: 36-47



NEW



FREDDIE G01

Low ankle double density safety shoe
Blue & Black blended stylish knitted upper
Double density PU sole
Composite toe cap
Available sizes: 36-47



Heavy Engineering • Iron & Steel • Oil & Gas • Repairs & Maintenance



OCELOT

CE

High ankle double density safety shoe
Black nubuck & Grey Suede leather upper
Double density PU sole
Impact resistant steel toe cap &
penetration resistant steel insert
Available sizes: 36-47



MARGAY

CE

Low ankle double density safety shoe
Black nubuck and grey suede leather upper
Double density PU sole
Impact resistant steel toe cap &
penetration resistant steel insert
Available sizes: 36-47



IRIOMOTE

CE

High ankle double density safety shoe
Black waterproof goat print split leather upper
Double density PU sole
Impact resistant steel toe cap &
penetration resistant steel insert
Available sizes: 36-47



Heavy Engineering • Iron & Steel • Oil & Gas • Repairs & Maintenance



IBERIAN

Low ankle double density safety shoe
Black Waterproof Goat print split leather upper
Double density PU sole
Impact resistant steel toe cap & penetration resistant steel insert
Available sizes: 36-47



ONTILLA

CE

High ankle double density safety shoe
Brown colour nubuck leather upper
Double density PU sole
Impact resistant steel toe cap & penetration resistant steel insert
Available sizes: 36-47



GUINA

CE

Low ankle double density safety shoe
Brown colour nubuck leather upper
Double density PU sole
Impact resistant steel toe cap & penetration resistant steel insert
Available sizes: 36-47



Electronics • Hospitality • Logistics • Pharmaceutical



SIMBA

High ankle double density safety shoe
Black barton print leather upper
Double density PU sole
Impact resistant steel toe cap & penetration resistant steel insert
Available sizes: 36-47



SERVAL

Low ankle double density safety shoe
Black goat print leather upper
Double density PU sole
Impact resistant steel toe cap & penetration resistant steel insert
Available sizes: 36-47



NEW



TRINIL

High ankle double density safety shoe
Brown barton print grain leather upper
PU mid-sole and rubber out-sole
Impact resistant composite toe cap & para aramid insert
Available sizes: 36-47



NEW



DINICTIS

Low ankle double density safety shoe

Black Goat print leather upper

PU mid-sole and rubber out-sole

Impact resistant composite toe cap & para aramid insert

Available sizes: 36-47



BREWSTER

Low ankle double density safety shoe

Black nubuck leather upper

Double density PU sole

Impact resistant steel toe cap & penetration resistant steel insert

Available sizes: 36-47



DEVON REX

Low ankle double density safety shoe

Black wood print leather upper

Double density PU sole

Impact resistant steel toe cap & penetration resistant steel insert

Available sizes: 36-47



Electronics • Hospitality • Logistics • Pharmaceutical



SELKIRK REX

Low ankle double density safety shoe
Black barton print leather upper
Double density PU sole
Impact resistant steel toe cap & penetration resistant steel insert
Available sizes: 36-47



CORNISH REX

CE

Low ankle double density safety shoe
Black grain leather upper
Double density PU sole
Impact resistant steel toe cap & penetration resistant steel insert
Black in colour
Available sizes: 36-47



SERENGETI

High ankle double density safety shoe
Tan Nubuck leather upper
Double density PU sole
Impact resistant steel toe cap & penetration resistant steel insert
Available sizes: 36-47



Electronics • Hospitality • Logistics • Pharmaceutical



YORK

Low ankle double density safety shoe
Grey suede leather upper
Double density PU sole
Impact resistant steel toe cap & penetration resistant steel insert
Available sizes: 36-47



MANX SUEDE

High ankle double density safety shoe
Grey suede leather upper
Double density PU sole
Impact resistant steel toe cap & penetration resistant steel insert
Available sizes: 36-47



MANX

Low ankle double density safety shoe
Black barton print leather upper
Double density PU sole
Impact resistant steel toe cap & penetration resistant steel insert
Available sizes: 36-47



CE

Electronics • Hospitality • Logistics • Pharmaceutical

NEW



RUFUS J01 S2

Brown Microfiber upper
Low ankle double density safety shoe
Mid sole is black outsole colour is grey
200 J Impact resistant steel toe cap
Available sizes: 36-47



NEW



RUFUS K01

Black Microfiber upper with green piping
Low ankle double density safety shoe
Mid sole is black outsole colour is grey
200 J Impact resistant steel toe cap
Available sizes: 36-47



NEW



RUFUS M01

Upper made of Black microfibres with Suede leather & textile material
Low ankle double density safety shoe
Mid sole is black outsole colour is grey
200 J Impact resistant steel toe cap
Available sizes: 36-47



NEW



RUFUS L01 S2

Black Microfiber upper
Low ankle double density safety shoe
Mid sole is black outsole colour is grey
200 J Impact resistant steel toe cap
Available sizes: 36-47



Electronics • Hospitality • Logistics • Pharmaceutical

NEW



CYMRIC J01 0B

Black washable microfiber upper
Double density PU outsole
Plastic toecap
Velcro fastening system
Available sizes: 36-47



NEW



CYMRIC J02 0B

Black washable microfiber upper
Clog design
Double density PU outsole
Plastic toecap
Velcro fastening system
Available sizes: 36-47



NEW



CYMRIC J03 S1

Black washable microfiber upper
Double density PU outsole
Steel toecap
Slip on shoe design
Available sizes: 36-47



Electronics • Hospitality • Logistics • Pharmaceutical

NEW



CYMRIC K01 OB

White washable microfiber upper
Clog design
Double density PU outsole
Plastic toecap
Velcro fastening system
Available sizes: 36-47



NEW



CYMRIC K02 OB

White washable microfiber upper
Clog design
Double density PU outsole
Plastic toecap
Velcro fastening system
Available sizes: 36-47



NEW



CYMRIC K03 S1

White washable microfiber upper
Double density PU outsole
Steel toecap
Slip on shoe design
Available sizes: 36-47



Heavy Engineering • Iron & Steel • Oil & Gas • Repairs & Maintenance



LIGER L

Low ankle single density safety shoe
Black barton print leather upper
Single density PU sole
Impact resistant steel toe cap
Available sizes: 36-47

CE



LIGER H



RAGINI

Grey & Orange low ankle single density safety shoe
Suede split leather and breathable nylon mesh fabric upper
Single density PU sole
Impact resistant steel toe cap
Available sizes: 36-47

CE



CIVET

Low ankle single density safety shoe
Black barton print leather upper
Single density PU sole
Impact resistant steel toe cap
Available sizes: 36-47

CE



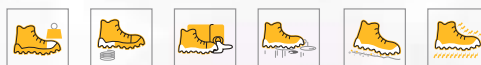
VIVVERA



HATRICK

High ankle single density safety shoe
Black corrected grain leather upper
Single density PU sole
Impact resistant steel toe cap
Available sizes: 36-47

CE



Construction • Maintenance • Mining • Shipping



Bi-coloured sole



Darwin design outsole



Waterproof
leather upper

FELIX

High ankle double density safety shoe
Black waterproof barton print leather upper
Double density PU sole
Impact resistant steel toe cap &
penetration resistant steel insert
Available sizes: 36-47

CE

Construction • Maintenance • Mining • Shipping



MALA

High ankle double density safety shoe
Black barton print leather upper
Double density PU sole
Impact resistant steel toe cap &
penetration resistant steel insert
Available sizes: 36-47



WALNOT OB

Low ankle double density safety shoe
Black goat print leather upper
Double density PU sole
Impact resistant thermoplastic toe puff
Available sizes: 36-47



CE



GONZO

Low ankle double density safety shoe
Black barton print waterproof leather upper
Double density PU sole
Impact resistant steel toe cap &
penetration resistant steel insert
Available sizes: 36-47



CE



CASHEW

Low ankle double density safety shoe
Black barton print leather upper
Double density PU sole
Impact resistant steel toe cap &
penetration resistant steel insert
Available sizes: 36-47



CE

Construction • Maintenance • Mining • Shipping

CE



COM 3300

Low ankle double density safety shoe

Nubuck leather upper

Double density PU sole

Impact resistant composite toe cap & penetration resistant para aramid insert

Available sizes: 36-47



COM 3700

Low ankle double density safety shoe

Black corrected grain leather upper

Double density PU sole

Impact resistant composite toe cap & para aramid insert

Available sizes: 36-47



CE



COM 3400

High ankle double density safety shoe

Black meena print grain leather upper

Double density PU sole

Impact resistant composite toe cap & para aramid insert

Available sizes: 36-47



CE



NEBELUNG

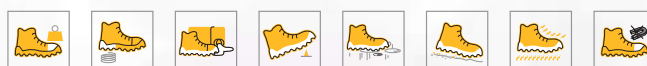
High ankle double density safety shoe

Brown oily finish 2 tone leather upper

Double density PU sole

Impact resistant steel toe cap & penetration resistant steel insert

Available sizes: 36-47



CE

Construction • Maintenance • Mining • Shipping



LYKOI

High ankle double density safety shoe
Black goat print leather upper
Double density PU sole
Impact resistant steel toe cap &
penetration resistant steel insert
Available sizes: 36-47



PEPPER

High ankle double density safety shoe
Black barton print leather upper
Double density PU sole
Impact resistant steel toe cap &
penetration resistant steel insert
Available sizes: 36-47



CE



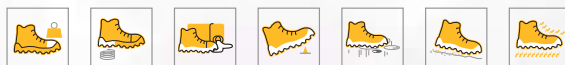
BAMBINO

High ankle double density safety shoe
Brown oily finish 2 tone leather upper
Double density PU sole
Impact resistant steel toe cap &
penetration resistant steel insert
Available sizes: 36-47



BERKLEY

High ankle double density safety shoe
Black nubuck waterproof leather upper
Double density PU sole
Impact resistant steel toe cap &
penetration resistant steel insert
Available sizes: 36-47



Construction • Maintenance • Mining • Shipping



KIL

CE

High ankle double density safety shoe
Black waterproof barton print leather upper
Double density PU sole
Impact resistant steel toe cap &
penetration resistant steel insert
Available sizes: 36-47



JORN

CE

Low ankle double density safety shoe
Black waterproof barton print leather upper
Double density PU sole
Impact resistant steel toe cap &
penetration resistant steel insert
Available sizes: 36-47



BORG

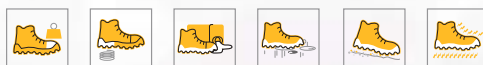
CE

Low ankle double density safety shoe
Grey suede leather upper
Double density PU sole
Impact resistant steel toe cap &
penetration resistant steel insert
Available sizes: 36-47



UPASALA

Low ankle single density safety shoe
White microfiber material upper
Single density PU sole
Impact resistant steel toe cap &
penetration resistant steel insert
Available sizes: 36-47



Heavy Engineering • Iron & Steel • Oil & Gas • Repairs & Maintenance



OREGON

High ankle nubuck leather shoe
Beige leather upper with synthetic lining
Moulded antistatic insoles
Single density PU sole
Impact resistant steel toe cap & steel insert
Available sizes: 36-47



NORTH 3600

High ankle double density safety shoe
Black goat print waterproof leather upper
Double density PU sole
Impact resistant steel toe cap & steel insert
Available sizes: 36-47



ALASKA

High ankle double density safety shoe
Black barton print waterproof leather upper
Double density PU sole
Impact resistant steel toe cap & steel insert
Available sizes: 36-47



VIK

High ankle safety shoe
Tan barton print water proof leather upper
Single density PU sole
Impact resistant steel toe cap & steel insert
Available sizes: 36-47



HEAD PROTECTION

Few injuries are more fatal or more damaging than head injuries. Concussions, brain injuries, permanent or temporary brain damage are just a few of the possible outcomes of a blow to the head. Additionally, workers who are exposed to potential electric shock need to protect against that as well. Basic Personal Protective Equipment required for any worker is the safety helmet.

A. ASSESSMENT FACTORS

- Is there a possibility that something might fall from overhead?
- Are there any exposed electrical components (wiring, conductors, etc.) that might come into contact with your head?
- Are there fixed objects low enough, that one might bump into accidentally?

If you have answered yes to any one of these questions, then you should be wearing a safety helmet.

B. TERMINOLOGY

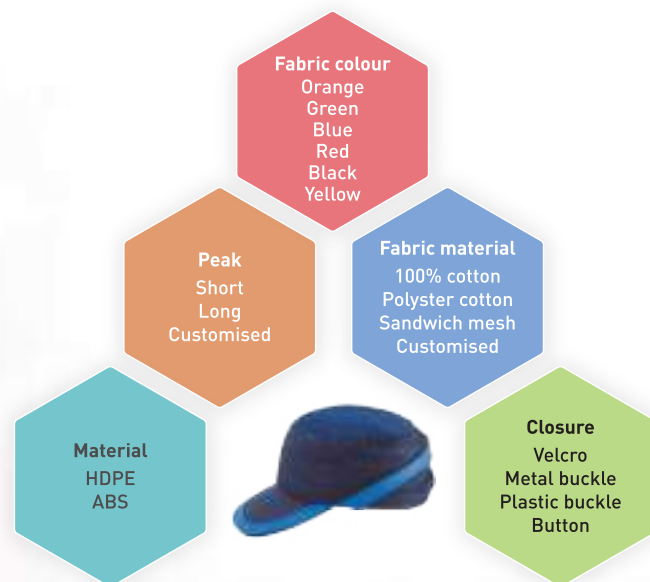
Bump Cap - Head protection gear designed for protection against low clearance objects only. A bump cap is not to be used in lieu of a hard hat where a hard hat is required.

Cap style - Refers to a safety helmet that has a brim on the front of the helmet only.

Brim - The rim surrounding the shell.

Full Brim - Refers to a safety helmet that has a brim that wraps around the entire safety helmet, as compared to the cap style safety helmet where the brim is only in the front of the safety helmet.

BUMP CAP CUSTOMIZATION:



Four Point Suspension - Refers to the number of clips that connect the suspension to the inside of the safety helmet. Safety helmets usually come in a four-point or a six-point suspension.

Chinstrap - An adjustable strap that fits under the chin to secure the helmet on the head.

Pin lock - Refers to the safety helmet suspension that adjusts to the head size by means of a set of holes on the one side of the strap and little pins that snap into the holes on the other side.

Ratchet - Refers to the safety helmet suspension that adjusts to the head size using a ratchet adjustment knob. Simple, easy and quick, this allows the safety helmet to be fit tight and comfortably.

Harness - The complete assembly by means of which the helmet is maintained in position on the head, which includes headband, cradle, etc.

Headband - Part of harness surrounding the head

Slots - Refers to the slot in the side of the safety helmet that is designed to accept accessories such as ear muffs, face shields or other safety helmets

Anti-concussion Tapes - Supporting straps which form the cradle

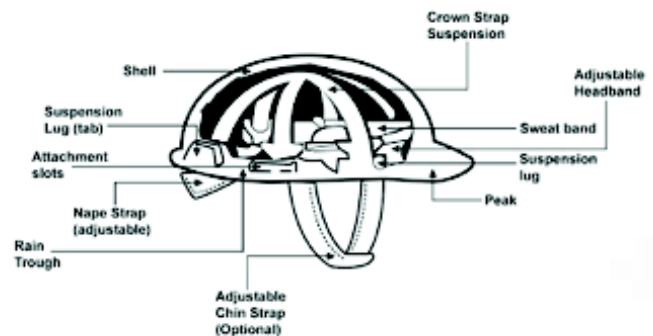
Cradle - The fixed or adjustable assembly comprising of anti-concussion tapes and nape strap, where provided.

Nape Strap - An adjustable (with respect to the shell) strap that fits behind the head to secure the helmet and may be an integral part of the helmet

Peak - The extension of the shell above the eyes.

Shell - The hard smoothly finished material that provides the general outer form of the helmet.

Ventilation Holes - Holes provided in the shell to permit circulation of air inside the helmet.



C. STANDARDS FOLLOWED

EN 397:1995 + A1:2012 - Protective helmets for industry

This details physical and performance requirements, methods of test and marking requirements for general-use of industrial safety helmets. Performance requirements for the helmet shell are provided. Mandatory requirements such as shock absorption, resistance to penetration, flame resistance, chin strap anchorages, and label are addressed. Physical requirements for industrial safety helmets including materials and construction, external vertical distance. Internal vertical distance, internal vertical clearance, horizontal distance, and wearing height are included.

ANSI/ISEA Z89.1-2014 (R2019)

Revision of ANSI/ISEA Z89.1-2009. This standard establishes minimum performance and labelling requirements for protective helmets used in industrial and occupational settings

under normal temperature conditions and optionally at high and low temperatures and when worn in the reversed position. It also includes requirements for high-visibility helmets and specifies test methods for evaluating all requirements. Helmets conforming to the requirements of this standard are designated both by Type (based on location of impact force) and Class (based on electrical insulation) as well as any optional feature.

4.1 Impact Types

4.1.1 Type I

Type I helmets are intended to reduce the force of impact resulting from a blow only to the top of the head.

4.1.2 Type II

Type II helmets are intended to reduce the force of impact resulting from a blow to the top or sides of the head.

4.2 Electrical Classes

4.2.1 Class G (General)

Class G helmets are intended to reduce the danger of contact with low voltage conductors. Test samples shall be proof-tested at 2200 volts (phase to ground). This voltage is not intended as an indication of the voltage at which the helmet protects the wearer.

4.2.2 Class E (Electrical)

Class E helmets are intended to reduce the danger of contact with higher voltage conductors. Test samples are proof-tested at 20,000 volts (phase to ground). This voltage is not intended as an indication of the voltage at which the helmet protects the wearer.

4.2.3 Class C (Conductive)

Class C helmets are not intended to provide protection against contact with electrical hazards.

EN 812:2012 - Bump caps for industry

These are essentially intended for inside use. A bump cap is not intended to protect against the effects of falling objects and must not under any circumstance replace a protective industrial helmet.

IS 2925:1984 - Specification for Industrial Safety Helmets

This standard lays down the requirements regarding material, construction, workmanship and finish and performance requirements of helmets intended to provide protection against falling objects and other hazards which may be encountered in mining, tunnelling, quarrying, shipbuilding, construction projects and similar other industrial occupations.

IMPACT PROTECTION

Bump Cap testing as per standard EN 812, should be properly conditioned in low temp (-10 ± 2)°C and high temp (50 ± 2)°C for 4 hours to 24 hours and whether the force transmitted to the head form will exceed 15.0 KN or not should be verified accordingly.

RESISTANCE PENETRATION

A bump cap is tested (as per standard EN812) following appropriate conditioning processes in low temp (-10 ± 2)°C and that of the high temp (50 ± 2)°C for 4 hours to 24 hours such as the point of the striker cannot contact the head form surface. will exceed 15.0 KN or not should be verified accordingly.

CHIN STRAP ANCHORAGES

A bump cap when fitted with chin strap anchorages, shall be tested according to EN 812 to keep the force between 150N - 250N at which artificial jaw shall release due to anchorage failure.

EYE PROTECTION

Eye protection needs to be routinely considered for use by carpenters, electricians, machinists, mechanics, millwrights, plumbers, pipefitters, sheet metal workers, tinsmiths, assemblers, sanders, grinding machine operators, sawyers, welders, labourers, chemical process operators and handlers and timber cutting and logging workers.

A. ASSESSMENT FACTORS

Employers of workers in other job categories should decide whether there is a need for eye and face protecting PPE through a hazard assessment. Examples of potential eye or face injuries included:

- Dust, dirt, metal or wood chips entering the eye from activities such as chipping, grinding, sawing, hammering, the use of power tools or even strong wind forces.
- Chemical splashes from corrosive substances, hot liquids, solvents or other hazardous solutions.
- Objects swinging into the eye or face, such as tree limbs, chains, tools or ropes.
- Radiant energy from welding, harmful rays from the use of lasers or other radiant light (as well as heat, glare, sparks, splash and flying particles).

B. STANDARDS FOLLOWED

EN 166:2002 - Personal eye protection against various dangers

The EN 166 standard is applicable to all types of personal eye protectors used against various dangers liable to damage the eye or to alter the vision, with the exception of radiation of nuclear origin, X rays, laser beams, infrared rays given out by sources at low temperatures. The specifications of this standard are not applicable to eye protectors for which separate and complete standards exist, such as anti-laser eye protector, all-purpose solar spectacles, etc. The eye protectors fitted with corrective lenses are not excluded from the application field.

EN169 - Ocular filters for welding and related techniques

The EN169 standard gives the grade numbers and the transmission specifications of the filters intended to ensure the protection of users carrying out welding, arc gouging and plasma arc cutting works.

The other requirements apply for this type of filter are featured in the EN166 standard. The specifications for the welding filters with variable protection grade or double protection grade make the subject of the EN379 standard.

EN175 - Equipment for eye and face protection during welding and allied processes

The EN175 standard specifies the safety requirements and test methods relating to personal protective equipment used to protect the user's eyes and face against harmful optical radiation and against other specific risks due to usual welding processes, cutting or other related techniques.

The present standard specifies the protection, including ergonomic aspects, against different types of risks or dangers: radiation, flammability, mechanical risks, electrical risks. The equipment is designed to adjust protective filters with or without guard lenses or eyepiece of reinforcement, according to the recommendations of the protective equipment manufacturer for welding operations, in conformity with EN166 and EN169 standards or with the EN379 standard.

APPLICATION CHART - TYPE OF THE GLASS

EN166	1	Optical Class.
EN166	F	Low Energy Impact.
EN166	B	Medium Energy Impact.
EN166	9	Non adherence of molten metal and resistance to penetration of hot solids.
EN166	3	Protection against liquid droplets/splashes.
EN166	8	Protection against Short Circuit Electric Arc.
EN169	3	Filters for personal eyes-protection equipment used in welding and similar operations, Scale number 3.
EN169	5	Welding and braze welding of heavy metals. Welding with emitive fluxes (notably light alloys) Oxygen Cutting.
EN169	8	Filters for personal eyes-protection equipment used in welding and similar operations. Scalenumber 8.
EN170	3-1	For use with sources which emit predominantly Ultra Violet Radiation at wave lengths shorter than 313 nm and when glare is not an important factor. This coversn the UVC and most of the UVB bands.
EN171	4-5	Protection against infra red radiations. Typical application in terms of mean temperature sources up to 1390°C.

EAR PROTECTION

Determining the need to provide hearing protection for employees can be challenging.

A. ASSESSMENT FACTORS

- The loudness of the noise as measured in decibels (dB).
- The duration of each employee's exposure to the noise.
- Whether employees move between work areas with different noise levels.
- Whether the noise is generated from one or multiple sources.

B. TERMINOLOGY

Decibel (dB) - A unit used to measure the intensity of a sound or the power level of an electrical signal by comparing it with a given level on a logarithmic scale. In general use, it is a degree of loudness.

SNR (Single Number Rating) - Is a rating system set up by the European Union (EU). Tests are conducted by independent testing laboratories with no direct participation by manufacturers. The independent testing laboratories meet all of the regulatory requirements as set by the EU. The test results serve as a guideline to indicate the amount of potential protection, a hearing protection device will give in a noisy environment. This was established by the European Union and is aligned with the EN standard in Europe.

NRR (Noise Reduction Rating) - Is a rating system set up by the Environmental Protection Agency (EPA) as a guideline that indicates the amount of potential protection a hearing protection device will give in a noisy environment. It is aligned with the American ANSI standard. All tests are performed in a controlled environment. Consequently, posted NRR ratings are a qualified example of how the individual products compare with other similar hearing protection products in an uncontrolled noise environment. Test results do not evaluate the product reusability, comfort, adaptability or quality.

C. STANDARDS FOLLOWED

EN352-1 - Muffs and Headband

This section of the standard deals with head fasteners and establishes requirements in terms of manufacture, design and performance, test methods, instructions relating to marking and information intended for users.

EN352-2 - Plugs and Bands

This part of the standard also deals with individually moulded ear plugs and devices connected by a band, although, it does not deal with the performances of electronic devices likely to be inserted in the earplugs or on the case of amplitude sensitive plugs.

EN352-3 - Muffs and Helmet Mounted

The present section of the standard stipulates requirements in terms of manufacture, design and performance, test methods, instructions relating to head fastener marking and information intended for head fastener users, when the latter is fixed on protective industrial helmets

FACE PROTECTION

Respiratory masks give you a protection against respiratory attacks: dust - particulates, aerosols, fume or gas.

A. ASSESSMENT FACTORS

To choose the correct respiratory apparatus (half-mask or complete mask composed of one or two cartridges)

- Identify the type of risk: dust, fume, gas, vapours etc.
- Identify the toxic product
- Locate and record its toxicity (concentration)
- Compare with the Average and Limited Value of Exposure

DUST AND AEROSOL FILTERS

Type	Code	Protection
P1	White	Protects from coarse solid particles without specific toxicity (Calcium Carbonate).
P2	Yellow	Protects from solid and/or liquid aerosols warned to be hazardous or irritating (silica, sodium carbonate)
P3	Red	Protects from toxic solid and/or liquid aerosols (beryllium-radioactive particles).

B. TERMINOLOGY

Dust - Solid particles suspended in the air.

Fumes - Small particles suspended in the air.

Aerosols and Aqueous Fogs - Small droplets produced during pulverization.

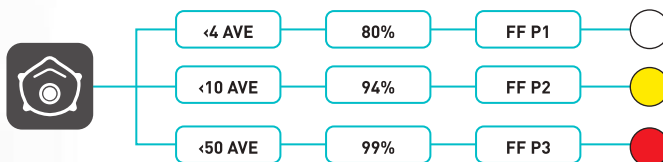
Average Value of Exposure (AVE) - It corresponds to the concentration measured over one reference period (one day of 8H for example). If the AVE exceeds the concentration to which an individual can be exposed without running any risk for his health, a protection is necessary. The AVE is indicated on the card of toxicity of the handled products.

Limit Value Exposure (LVE) - It is the measured concentration over a maximum time of 15 minutes that is advisable not to exceed.

CLASSIFICATION OF THE FILTERS

Class	FFP1	FFP2	FFP3
Minimum efficiency %	78%	92%	98%
Total inward leakage	22%	8%	2%
Filter efficiency of the filtering medium	80%	94%	99%
Nominal Protection Factor	4,5	12,5	50
Mean Exposure Value (MEV)	4X	10X	20X

FILTER EFFICIENCY



C. STANDARDS FOLLOWED

EN 136 - Overall Masks

It contains laboratory tests and practical performance tests to check the conformity with resistance to temperature, impacts, flame, thermal radiation, traction, cleansers and disinfectants. Furthermore, the visual inspection must concern the marking and the manufacturer's information guide.

EN 140 - Half Masks and Quarter Masks

It contains laboratory tests and practical performance tests to check the conformity with resistance to impacts, cleaners, disinfectants, temperature, flame and respiratory resistance.

EN 143 - Filters Against Particles

It contains laboratory tests to check the conformity with resistance to impacts, cleansers, disinfectants, temperature and flame. It also checks conformity with respiratory resistance.

EN 149 - Filtering Half Masks

It contains laboratory tests to check the conformity with resistance to impacts, cleansers, disinfectants, temperature, flame. It also checks conformity with respiratory resistance.

MEDICAL FACE MASKS

EN 14683:2020

This European Standard specifies construction, design, performance requirements and test methods for medical face masks intended to limit the transmission of infective agents from staff to patients during surgical procedures and other medical settings with similar requirements. A medical face mask with an appropriate microbial barrier can also be effective in reducing the emission of infective agents from the nose and mouth of an asymptomatic carrier or a patient with clinical symptoms.

Materials and construction

The medical face mask is a medical device, composed of a filter layer that is placed, bonded, or moulded between layers of fabric. The medical face mask shall not disintegrate, split, or tear during intended use.

Design

The medical face mask shall have a means by which it can be fitted closely over the nose, mouth, and chin of the wearer and which ensures that the mask fits closely at the sides. Medical face masks may have different shapes and constructions as well as additional features such as a face shield (to protect the wearer against splashes and droplets) with or without anti-fog function, or a nose bridge (to enhance fit by conforming to the nose contours).

Bacterial filtration efficiency (BFE)

The Bacterial Filtration Efficiency test determines the filtration efficiency by comparing the bacterial control counts to test article effluent counts. The test is conducted using *Staphylococcus aureus* as the challenge organism. After the filtration media is preconditioned, a liquid suspension of *S. aureus* is aerosolized and delivered to the filtration media at a constant flow rate of 28.3 litres per minute (LPM) or 1 cubic foot per minute (CFM)

Breathability

Air permeability of the mask, measured by determining the difference of pressure across the mask under specific conditions of air flow, temperature, and humidity. The differential pressure is an indicator of the "breathability" of the mask.

Splash resistance

Splash resistance is the ability of a medical face mask to withstand penetration of synthetic blood projected at a given pressure.

Microbial cleanliness (Bioburden)

Cleanliness means freedom from population of viable micro-organisms on a product and/or a package, and freedom from particles that are contaminating a material and can be released but are not generated by mechanical impact

Biocompatibility

The manufacturer shall complete the evaluation of the medical face mask according to EN ISO 10993-1 and determine the applicable toxicology testing regime.

PERFORMANCE REQUIREMENTS FOR MEDICAL FACE MASKS

Test	Type I	Type II	Type III
Bacterial filtration efficiency (BFE): The ability of the face mask to filter out bacteria so that they are not released into the user's surroundings (BFE), (%).	≥ 95	≥ 98	≥ 98
Differential pressure: The lower this value, the easier it is for the user to breathe normally (Pa/cm ²).	<29.4	<29.4	<49
Splash resistance pressure: The ability of the face mask to withstand the penetration of liquid splashes (kPa).	NA	NA	<16.0
Microbial cleanliness: Microbial cleanliness documents cleanliness in the manufacturing process (cfu/g).	≤ 30	≤ 30	≤ 30

Type I medical face masks should only be used for patients and other persons to reduce the risk of spread of infections particularly in epidemic or pandemic situations. Type I masks are not intended for use by healthcare professionals in an operating room or in other medical settings with similar requirements.

HAND PROTECTION

Because of their tremendous versatility, hands are exposed and susceptible to many types of injuries. The common hazards against which hand protection needs to be routinely considered are:

- | | | |
|-------------------------|-----------------------|------------------------|
| a. Cut | b. Puncture | c. Crush |
| d. Pinch | e. Rotating Equipment | f. Vibrating Equipment |
| g. Extreme Temperatures | h. Electrocution | |
| i. Irritation | | |

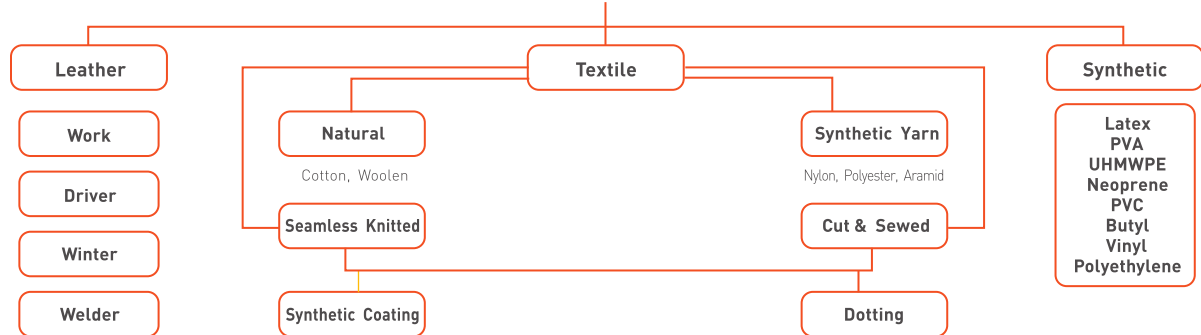
A. ASSESSMENT FACTORS

The need for hand protection should be assessed by conducting

an assessment of potential workplace hazards. There are four interconnected factors to consider when selecting the best form of hand protection for the intended work.

- The type of hazard (physical, mechanical, chemical, biological).
- The nature of the task (regular process or incidental/accidental).
- User comfort (fit, dexterity) and
- The workplace conditions (surface/ambient temperatures, wet/dry).

MATERIAL CLASSIFICATION



B. KNITTED GLOVES

The needle is the main instrument on a knitting machine. The gauge represents the number of needles in 1 English inch (2.54 inches). The higher the gauge, finer the glove, which results in better dexterity and sensibility. Gloves are available in 7, 10, 13, 15, & 17 gauges.

Kevlar® is a para-aramid fibre from DuPont which combines both lightness and extremely high tenacity. For a given weight, Kevlar is five times more resistant than steel.

Twaron® is the para-aramid fibre from AKZO Nobel.

Kevlar®/Twaron® fibre gloves are 3 times more resistant to cuts than cotton gloves and 5 times more resistant than leather gloves. They have the following characteristics:

- Burns between 425°C and 475°C without melting
- Self-extinguishing (cannot burn without outside addition of fuel)

- Good chemical stability
- Soft to touch, comfortable, washable, good dexterity

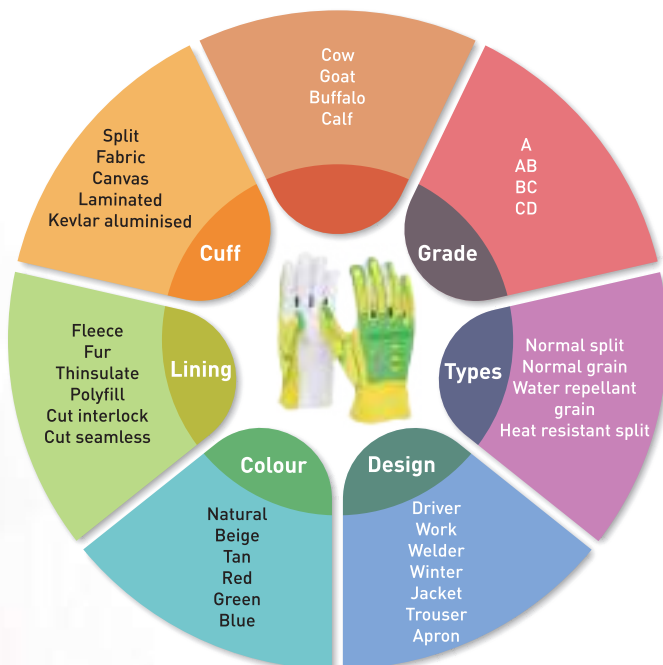
C. SUPPORTED GLOVES

Our technical seamless gloves are manufactured using fully automated machines, in our fully acclimatized production floors. The nitrile gloves plant manufactures heavy, medium and light dipped gloves, both in string knit as well as cut and sewn liners. Our production unit has knitting machines of 7, 10, 13 & 15 gauge and in pile construction. Keeping in mind the end users from various cross-sections of industries our units are equipped with machinery to knit from finer to coarser gauge products. We have a fully automated dipping process and the NBR is sourced from world famous manufacturers. Nitrile gloves are best when there is a need for greater in applications requiring mild chemical protection, cut resistance or a disposable glove solution.



D. LEATHER GLOVES

Leather Gloves are best for protection from rough objects, sparks and heat and in heavy-duty work requirements. All kinds of leather provide comfort, durability, dexterity, and mild heat resistance and abrasion protection. These advantages make leather a traditional favourite for industrial workers. Humidity controlled shop-floor facilitates better handling and delivery of leather gloves. The cutting and sewing machines, which are of European make are ultra modern with a high reputation. Our strength lies in being able to manufacture very high-quality gloves using a combination of leather, Para -aramid fabrics and liners. Having our own tannery gives us the advantage of producing leather conforming to international norms.



- Double stitching on all gloves with different pattern to five better appearance and tough stitching.
- Keystone thumb, Straight Thumb and wing thumb is possible.

E. STANDARDS FOLLOWED

Protective gloves can be divided into 3 categories depending on type and which risk or danger the gloves should protect against.

Category 1: Gloves of simple design, for minimal risks only. Example of gloves in this category are house-hold gloves used for cleaning and for protection against warm objects or temperatures not exceeding +50° C. Additional gloves in this category can include light-duty gardening gloves or other work where the risk for injury is minimal.

Category 2: Gloves of intermediate design, for intermediate risks. Gloves are placed in this category when the risk is not classified as minimal or irreversible. The gloves must be subjected to independent testing and certification by a Notified Body, whom then issues a CE marking showing the gloves protective capacities. In this category, you will find general handling gloves requiring good puncture and abrasion performance according to EN 388.

Category 3: Gloves of complex design, for irreversible or mortal risks. Gloves in this category are designed to protect against the highest levels of risk e.g. highly corrosive acids. Gloves in this category must also be independently tested and certified by a Notified Body (approved by the EU commission).

EN 420 - General Requirement

This standard defines the general requirements for glove design and construction, innocuousness, comfort and efficiency, marking and information applicable to all protective gloves.

Glove Construction and Design

- Gloves have to offer the greatest possible degree of protection in the foreseeable conditions of end use
- When seams are included, the strength of these seams should not reduce the overall performance of the glove.

Innocuousness

- The gloves themselves shouldn't cause any harm to the user
- pH of the glove should be between 3.5 and 9.5
- Chromium (VI) content should be below detection (less than 3 ppm)

EN 388 - Gloves giving protection from mechanical risks

Protection against mechanical hazards is expressed by a pictogram followed by four numbers (performance levels), each representing test performance against a specific hazard.

1 Resistance to abrasion

Based on the number of cycles required to abrade through the sample glove (abrasion by sandpaper under a stipulated pressure). The protection factor is then indicated on a scale from 1 to 4 depending on how many revolutions are required to make a hole in the material. The higher the number, the better the glove.

2 Circular Blade cut resistance (Coup Test)

Based on the number of cycles required to cut through the sample at a constant speed. The protection factor is then indicated on a scale from 1 to 4.

3 Tear resistance

Based on the amount of force required to tear the sample. The protection factor is then indicated on a scale from 1 to 4.

4 Puncture resistance

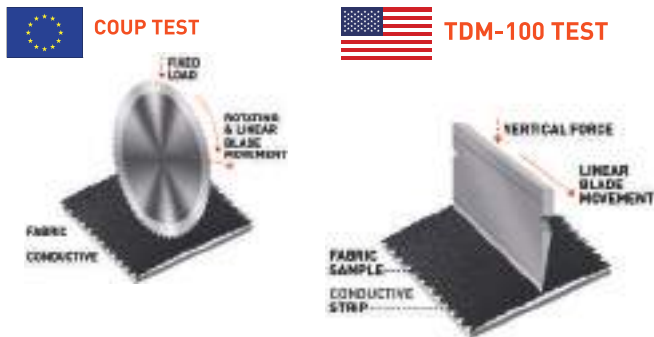
Based on the amount of force required to pierce the sample with a standardly sized point. The protection factor is then indicated on a scale from 1 to 4.

5 Straight Cut Resistance (TDM-100 Test)

Based on the average load required to achieve a cut using a straight blade. The protection factor is then indicated on a scale from A to F.

6 Impact Resistance

An optional test based on the mean transmitted force which is intended for gloves designed for protection against impact. Gloves that do not offer impact protection will not be subjected to this test. For that reason, there are three potential ratings that will be given, based on this test. P (Pass), F (Fail), and X (Not tested)



TEST	Performance				
	1	2	3	4	5
Abrasion Resistance (Cycles)	100	500	2000	8000	-
Blade cut resistance (Factor)	1.2	2.5	5	10	20
Tear Resistance (Factor)	10	25	50	75	-
Puncture Resistance (Newton)	20	60	100	150	-

Levels of performance for materials tested with EN ISO 13997						
Test	Level A	Level B	Level C	Level D	Level E	Level F
Straight Blade Cut Resistance (N)	2	5	10	15	22	30

Impact Resistant Test with Standard 13594:2015		
P	Passed	≤ 7.0kN
2	Failed	≥ 9.0kN
X	Not Tested	NA

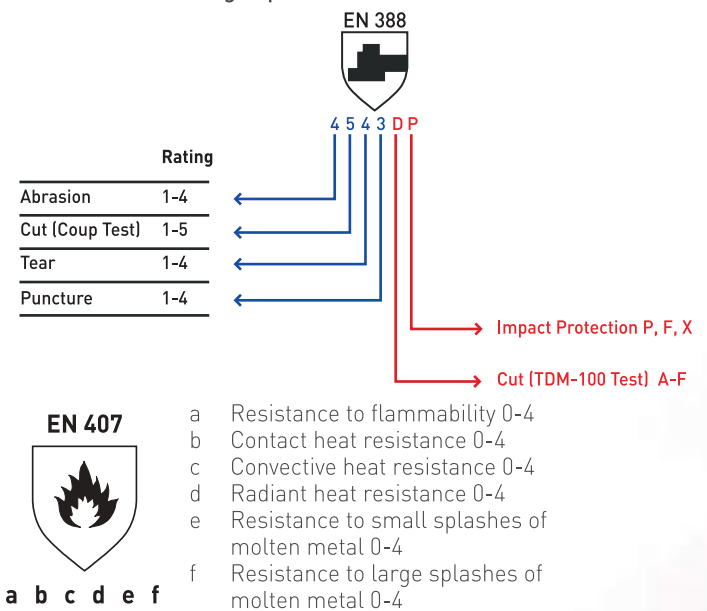
Volume Density

This indicates Volume Resistivity, where a glove can reduce the risk of electrostatic discharge. (Pass or fail test). These pictograms only appear when the gloves have passed the relevant test

EN 407

This standard specifies the test methods and the general requirements, the classification and the marking of gloves for protection against heat and/or fire (flames, contact heat, convective heat, radiant heat, small metal splashes or large projections of molten metal).

- a - Resistance to flammability 0-4
- b - Contact heat resistance 0-4
- c - Convective heat resistance 0-4
- d - Radiant heat resistance 0-4
- e - Resistance to small splashes of molten metal 0-4
- f - Resistance to large splashes of molten metal 0-4



EN407 - Heat Protection

PERFORMANCE LEVELS	1	2	3	4
A. Burning behaviour (after flame & after glow time)	20s no requir.	<10s <120 s	<3s <25s	<2s <5s
B. Contact heat (cont. temp. & threshold time)	100°C >15s	250°C > 15s	350°C > 15s	500°C > 15s
C. Canvective heat (heat transafer delay)	>4s	>7s	>10s	>18s
D. Radiant heat (heat transfer delay)	>7s	>20s	>50s	>95s
E. Small drops molten mela (#drops)	>10	>15s	>25	>35
F. Large quantity molten metal (mass)	30g	60g	120g	200g

EN 374 - Gloves giving protection from dangerous chemicals and micro-organism Chemical protective gloves must meet the requirements of the European standard EN 374. This standard has now been modified substantially. Gloves with long cuffs greater or equal to 400mm are also to be tested with samples taken at 80mm from the end of cuff.

EN ISO 374-1:2016 - Terminology and performance requirements for chemical risks

NEW	OLD
EN ISO 374-12016	EN 374-12003
“Protective gloves against dangerous chemicals and micro-organisms”	“Protective gloves against chemicals and micro-organisms”
Removal of reference to micro-organisms in the text (see new part 5)	Assumption of protection against micro-organisms
Number of test chemicals increased from 12 to 18	12 test chemicals
Beaker no longer used	Beaker for “waterproof protective gloves with limited protection against chemical dangers”
Gloves classified as type A, B or C	
Change of labelling on the product: pictogram of conical flask with differing number of letters for test chemicals per type	Pictogram of conical flask with at least 3 letters for test chemicals






3 specimens taken from the palm are tested for breakthrough times and the lowest is the result; the performance level is correlated with the breakthrough timetable. It is based on three test methods:

- Penetration test in accordance with standard EN 374-2: 2014
- Permeation test in accordance with standard EN 16523-1: 2015 which replaces standard EN 374-3
- Degradation test in accordance with standard EN 374-4: 2013

Type A: Protective glove with permeation resistance of at least 30 minutes each for at least 6 test chemicals.

Type B: Protective glove with permeation resistance of at least 30 minutes each for at least 3 test chemicals.

Type C: Protective glove with permeation resistance of at least 10 minutes for at least 1 test chemical.

NEW			OLD	
ISO 374-1-2016	ISO 374-1-2016/Type B	ISO 374-1-2016/Type C	EN 374:2003	EN 374:2003
				
JKLMNO	JKL		AKL	

The chemical permeation table now includes 6 new categories labelled M through T.

LIST OF HAZARDOUS COMPOUNDS			
CODE	CHEMICAL	CAS NUMBER	CLASS
A	Methanol	67-56-1	Primary Alcohol
B	Acetone	67-64-1	Ketone
C	Acetonitrile	75-05-8	Nitrile composite
D	Dichloromethane	75-09-2	Chlorinated hydrocarbon
E	Carbon disulphide	75-15-0	Organic compound containing sulphur
F	Toluene	108-88-3	Aromatic hydrocarbon
G	Diethylamine	109-89-7	Amine
H	Tetrahydrofuranne	109-99-9	Heterocyclic ether compound
I	Ethyl acetate	141-78-6	Ester
J	n-Heptane	142-82-5	Saturated hydrocarbon
K	sodium hydroxide 40%	1310-73-2	Inorganic base
L	sulphuric acid 96%	7664-93-9	Inorganic mineral acid, oxidising
M	nitric acid 65%	7697-37-2	Inorganic mineral acid, oxidising
N	acetic acid 99%	64-19-7	Organic acid
O	ammonia 25%	1336-21-6	Organic base
P	hydrogen peroxide 30%	7722-84-1	Peroxide
S	hydrofluoric acid 40%	7664-39-3	Inorganic mineral acid
T	formaldehyde 37%	50-00-0	Aldehyde

EN 374-2:2014 - Determination of resistance to penetration

There are no significant changes.

EN 374-3:2003 - Determination of resistance to permeation by chemicals

This standard has been removed and replaced by EN 16523-1:2015, Determination of material resistance to permeation by chemicals — Part 1: Permeation by liquid chemical under conditions of continuous contact, in the Official Journal after harmonisation. There is no significant effect on the test method.

EN 374-4:2013 - Determination of resistance to degradation by chemicals

This part is new and takes into account the effect of degradation (change of glove material) by the chemical. Degradation can cause brittleness, swelling or shrinkage of the polymer material, for example. This is equivalent to a

changing barrier function against the chemical. To be able to claim protection against a chemical of the list, permeation and from now degradation tests must be carried out. The results of the degradation test must appear in the information leaflet.

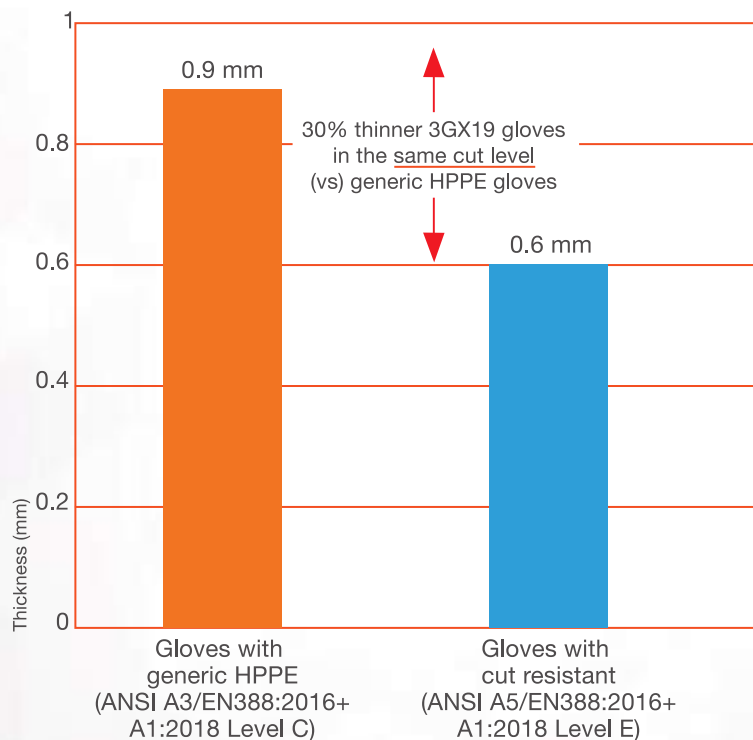
EN ISO 374-5:2015 - Terminology and performance requirements for micro-organisms risks

This standard is expected to become effective in 2017. It should be observed in particular for the risks of contact with micro-organisms (bacteria/viruses)

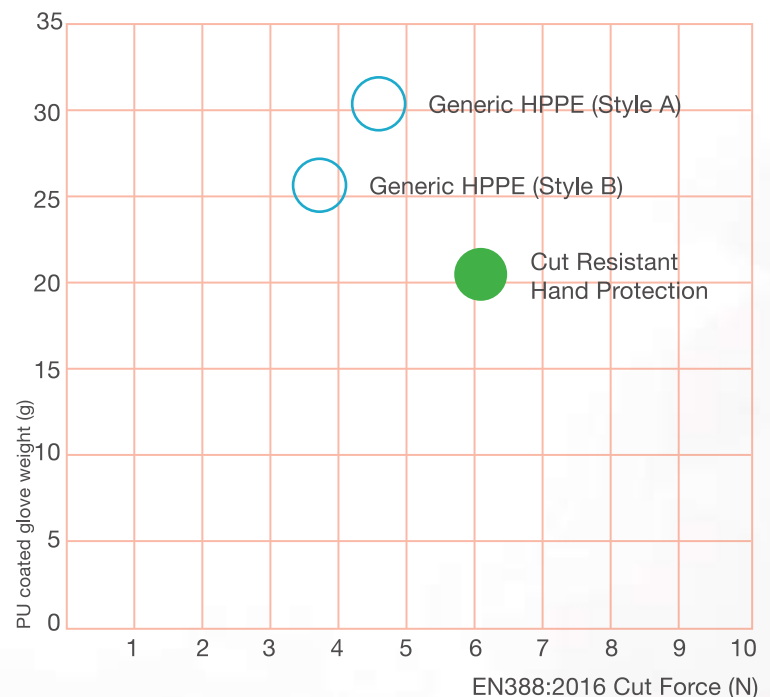
EN 511 - This standard applies to any glove to protect the hands against convective and contact cold until the temperature goes down to – 50°C. The 'cold hazard' pictogram is accompanied by a 3 - digit number:

- Resistance to convective cold (0-4)
- Resistance to contact cold (0-4)
- Permeability by water (0 or 1)

Thickness comparison between 13 gauge generic PE gloves and gloves with cut resistant hand protection fiber with similar range of cut resistance level B (ANSI A2)



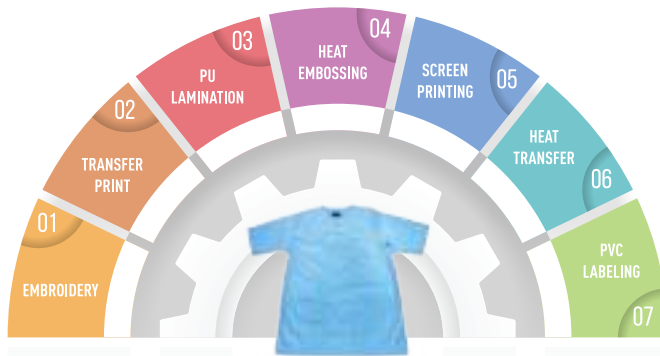
Standard 13 gauge or 15 gauge PU coated glove weight and cut resistance performance comparison



BODY PROTECTION

Employees who face possible body injury of any kind that cannot be eliminated through engineering, work practice or administrative controls, are advised to wear appropriate body protection suits while performing their tasks.

7 WAYS OF LOGO/LABELLING:



A. ASSESSMENT FACTORS

The common hazards against which body protection needs to be routinely considered are:

- Temperature Stress
 - Electricity
 - Cut
 - Visibility
 - Chemical Contact
- Depending on the type of hazard one can go for different types of body protective clothing

- Fully encapsulating suits
- Non-encapsulating suits
- Firefighters' protective clothing
- Proximity, or approach clothing
- Radiation-protective suits
- Blast or fragmentation suits
- Gloves, boots, and hoods

B. STANDARDS FOLLOWED

EN340

General requirements of the protective garments, used only in combination with specific standards such as EN342 etc. General requirements are for ergonomics, ageing, sizing and marking of protective clothing, and for information supplied by the manufacturer.

EU DIRECTIVES CLASSIFY PPE IN THREE CATEGORIES

CATEGORY I

Covers the lowest level of PPE. The user is assumed to assess the needs for protection himself, and there is a limited risk of severe consequences of not using appropriate clothing. The products under this category are self-declared by the marketer to comply with the standards. Products under this category are waterproof clothing (EN 343) and protecting clothing against the cold (EN 342)

EN 343: Protection Against Foul Weather

These garments are intended to protect against weather conditions with combinations of precipitation, rain, fog, humid-

ity and wind till temperature goes down to +5°C. They are tested for waterproofness (X) and breathability (Y); figures (1, 2 or 3) are given. Higher the number, better the results.



EN343

X Waterproofness; level 1, 2 or 3

Y Breathability; level 1, 2 or 3

EN 342: Protection Against Cold

Products are tested by measuring the insulation for an ensemble (jacket, trouser) worn. Air permeability and breathability are also measured. Figures (1, 2 or 3) are given against "X" for insulation, "Y" for air permeability and "Z" for breathability. Higher the number, better the results.



EN342

X Insulations; actual data (higher figure is best)

Y Air permeability; level 1, 2 or 3

Z Breathability; level 1, 2 or 3

CATEGORY II

Covers products intended to be used in environments with risk for severe, but no fatal consequences. The products must be tested and certified by a notified body. Products under this category are flame retardant clothing (EN 531/533/16112), clothing for high visibility (EN 471) and lifejackets (EN 395, 396 and 399), and buoyancy aids (EN 393)

EN 471: High Visibility Clothing

The standard specifies requirements for clothing intended to provide visibility of the user in hazardous situations under any light conditions by day and under illumination by vehicle headlights in the dark (24 hours visibility). Effective visibility is to be provided by a fluorescent fabric and reflective stripes. The visibility is measured as a combination of the area and positioning of the reflective materials (X) and the quality of same (Y).



EN 471

X Area of reflective/fluorescent fabric; level 1, 2 or 3

Y Reflective type/quality; level 1 or 2

Class 1

Class 1 defines the lowest visibility level. Example, high visibility trousers with two 5cm reflective bands around each leg. However, these become Class 3 when worn with a Class 3 jacket.

Class 2

The class 2 defines an intermediary visibility level. Example - vests. Two 5cm bands of reflective material around the body or one 5cm band around body and braces to both shoulders.

Class 3

The class 3 defines the highest level of visibility. Example, jacket with long sleeves, jacket and trouser suit. Two 5cm bands of reflective tape around the body and arms plus braces over both shoulders.

FEET PROTECTION



Mallcom is a pioneer in the manufacturing of directly injected polyurethane safety footwear. The process is used to make rugged shoes that tackle the challenges that workers are exposed to in construction, mining, metallurgical and other different industries. The uppers are made of leather in combination with various imported raw materials. Mallcom's shoes use imported steel plates and toe caps to protect its wearer from falling objects and penetration by sharp objects. Mallcom manufactures protective footwear as per EN 20345 and BIS 15298 standards.

Protective footwear worn in the workplace is designed to protect the foot from physical hazards such as falling objects, stepping on sharp objects, heat and cold, wet and slippery surfaces, or exposure to corrosive chemicals.

A. ASSESSMENT FACTORS

- Impact (falling/flying objects)

- Penetration (sharp objects piercing foot/hand)
- Compression (roll-over or pinching objects)
- Chemical exposure (inhalation, ingestion, skin contact, eye contact or injection)
- Extreme temperatures (heat or cold)
- Vibration
- Exposure to electricity

B. STANDARDS

EN344-1/EN ISO 20344 - Overall Requirement

It may be used only in conjunction with standards EN345-1/EN ISO 20345, EN346-1/EN ISO 20346 and EN347-1/EN ISO 20347, which specify the requirements for the shoes as a function of specific levels of risk involved

EN345-1/EN ISO 20345/IS 15298 - Specification for safety footwear for workplace

This standard defines the basic and the additional (optional) requirements for safety footwear for the workplace, as marked.

The shoes are designed and equipped with safety toe caps designed to withstand a maximum impact of 200 Joules and crushing up to 15 kN.

EN346-1/EN ISO 20346 - Specification for protective footwear marked

The shoes are designed and equipped with safety toe caps designed to withstand a maximum impact of 100 Joules and crushing up to 10 kN.

EN347-1/EN ISO 20347 - Specification for occupational shoes marked

These shoes are different from safety/protective footwear in that they have no protective toe cap for impact and crushing



SOLE	TIGER	TIGLON	DARWIN	OLIVER	MALKIN
MATERIAL	PU	PU	PU/PU	PU/PU Rubber	PU
DENSITY	SINGLE	SINGLE	DOUBLE	DOUBLE	SINGLE
TPR INSERT	YES	YES	NO	YES	NO
TOE CAP	STEEL	STEEL	STEEL	BOTH	STEEL
BUMPER CAP	NO	NO	NO	YES	NO

SB or S1 to S5 (safety footwear) - PB or P1 to P5 (protective footwear) - 01 to 05 (occupational shoes)			
CLASS 1 OR 2	EN 345-1 / EN ISO 20345	EN 346-1 / EN ISO 20346	EN 347-1 / EN ISO 20347
ALL MATERIALS	SB : basic properties	PB : basic properties	PB : basic properties
CLASS 1 ALL MATERIALS EXCEPT FOR NATURAL OR SYNTHETIC	S1 : basic properties plus : - closed back - antistatic - energy absorbing heel	P1 : basic properties plus : - closed back - antistatic - energy absorbing heel	01 : basic properties plus : - closed back - hydrocarbon-resistant sole - antistatic - energy absorbing heel
	S2 : the same as S1 plus : - waterproof	P2 : the same as P1 plus : - waterproof	02 : the same as 01 plus : - waterproof
CLASS 2 NATURAL AND SYNTHETIC POLYMERS	S3 : the same as S2 plus : - puncture resistant sole - studded sole	P3 : the same as P2 plus : - puncture resistant sole - studded sole	03 : the same as 02 plus : - puncture resistant sole - studded sole
	S4 : basic properties plus : - antistatic - energy absorbing heel	P4 : basic properties plus : - antistatic - energy absorbing heel	04 : basic properties plus : - antistatic - energy absorbing heel
	S5 : the same as S4 plus : - puncture resistant sole - studded sole	P5 : the same as P4 plus : - puncture resistant sole - studded sole	05 : the same as 04 plus : - puncture resistant sole - studded sole

SRA-CERAMICS+ DETERGING SOLUTION		SRB-STEEL+ GLYCERINE	
HEEL	FLAT	HEEL	FLAT
SRC=SRA+SRB		SRC=SRA+SRB	
			
Standard (EN ISO 20345:2011)		Standard (EN ISO 20345:2011)	

C. TERMINOLOG

Safety Footwear - Footwear, incorporating protective features to protect the wearer from injuries which could arise through accidents, fitted with toe caps, designed to give protection against impact when tested at an energy level of at least 200 J and against compression when tested at a compression load of at least 15 kN

Full Grain Leather - Hide or skin tanned to be imputrescible having conserved the totality of its grain

Corrected Grain Leather - Hide or skin tanned to be imputrescible which has been subjected to mechanical buffing to modify its grain structure

Leather Split - Flesh or middle part of a hide or skin tanned to be imputrescible obtained by splitting a thick leather

Rubber - Vulcanized elastomers

Polymeric Materials - For example polyurethane (PU) or polyvinyl chloride (PVC)

Insole - Non-removable component used to form the base of the shoe to which the upper is usually attached during lasting

Insock - Removable or permanent footwear component used to cover part or all of the insole

Lining - Material covering the inner surface of the upper

NOTE 1: The wearer's foot is in direct contact with the lining.

NOTE 2: Where an upper is split at the forepart to house the toe cap, or if an external piece of material is stitched to the upper to form a pocket to house the toe cap, the material under the toe cap acts as a lining.

Vamp Lining - Material covering the inner surface of the forepart of the upper

Quarter Lining - Material covering the inner surface of the quarters of the upper

Cleat(s) - Protruding part(s) of the outer surface of the sole

Rigid Outsole - Sole which, when the complete footwear is tested cannot be bent through an angle of 45 degrees under a load of 30N

Cellular Outsole - Outsole having a density of 0.9 g/ml or less with a cell structure visible under 10x magnification

Penetration-resistant Insert - Footwear component placed in the sole complex in order to provide protection against penetration

Safety Toe Cap - Footwear component built into the footwear designed to protect the toes of the wearer from impacts up to an energy level of at least 200 J and compression at a load of at least 15 kN

Seat Region - Back part of the footwear (upper and sole)

Conductive Footwear - Footwear whose resistance lies in the range of 0 to 100k

Antistatic Footwear - Footwear whose resistance lies above 100k and is less than or equal to 1,000M

Electrically Insulating Footwear - Footwear which protects the wearer against electrical shocks by preventing the passage of dangerous current through the body via the feet

Fuel Oil - Aliphatic hydrocarbon constituent of petroleum

Specific Job-Related Footwear - Safety, protective or occupational footwear relating to a specific profession, e.g. footwear for firefighters, footwear with resistance to chainsaw cutting, etc.

CROSS-SECTION OF A SAFETY SHOE



Shock Absorbent

The shock absorbent insole makes the feet of the worker less tired and easy comfort on harsh working condition. It's again our patented "Massue" system that makes feet relaxed. The ends on the feet are best massaged while walking and flexing that makes your worker less fatigued.

Electrostatic

Our range of safety shoes also includes ESD (electrostatic discharge) version to prevent or at least limit electrostatic charging and to ensure that any charges generated are diverted in a controlled manner. The ESD shoes are available for applications where people work with electrical sensitive equipment and parts like semiconductors and computer chips.

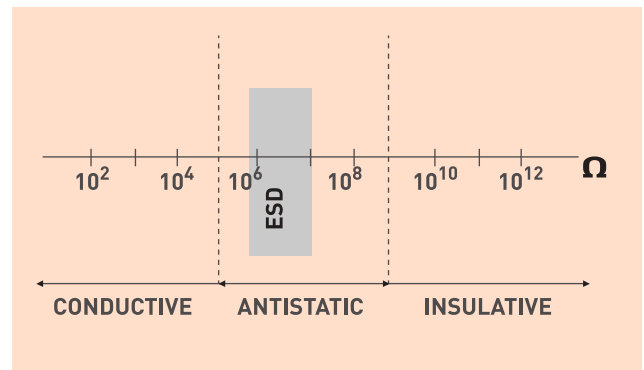
D. SOLE TECHNOLOGY

Slip Resistant

Slip resistant sole makes our safety shoes unique in the industry. The spread of industries that our shoes cater to justify the quality of slip resistant sole - that meets the need for various industries. Moreover, the unique PANTM design of the sole is patented and provides the same grip on any kind of surface as it gives to the versatile feline in the jungle.



Anti-static resistance is in between 10^5 and $10^9 \Omega$
ESD resistance is in between 0.75 MOhm until 35MOhm



GLOSSARY OF ICONS:

Dry Environment	Abrasion	Grip	Cuff	Oil Resistance	Water Resistance	Low Visibility	Knuckle Protection	EN 388 Cut Level 5
Rainforced	Cold	Impact	Cut	Tear	Dexterity	Flame	Heat	Flexible
Spark	Puncture	Ambidextrous	Multiutility	Knit Wrist	Dots	Antistatic	Slip Resistance	Light & Comfortable
Rough	Bump	Impact	UV	Projectiles	Air Con.	Bio Hazard	Dust	Breathable
Chemical	Cut Resistance	Micro Organism	Eye	Chemical	Hygienics	Rainfall	Dirty	Shock Resistant



Mallcom (India) Ltd.

EN-12, Sector-V, Salt Lake, Kolkata 700 091, India

T: +91 33 4016 1000 | F: +91 33 4016 1010

E: safety@mallcom.in | W: www.mallcom.in

Follow us on:     

android



ios

