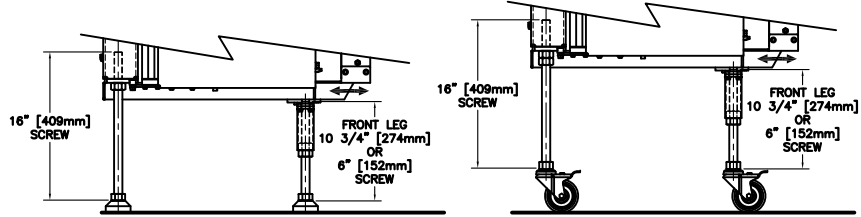


LEG EXTENSION OPTIONS



UHMW PAD [STD.]

4" LOCKING CASTER OPTIONS

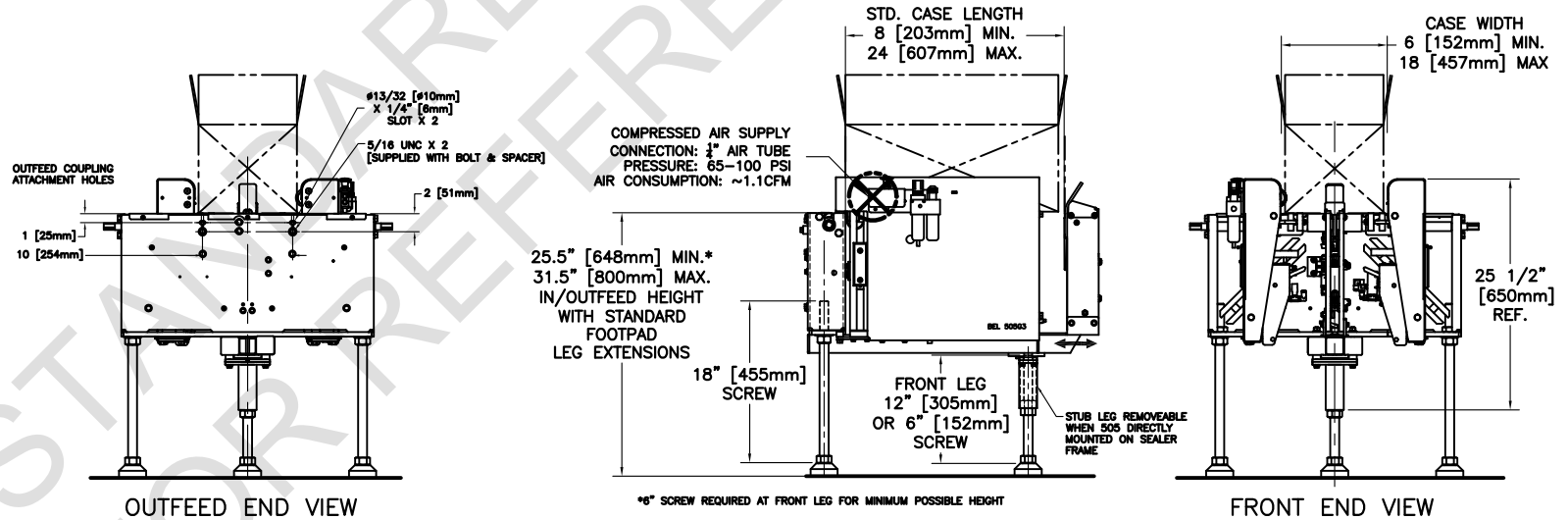
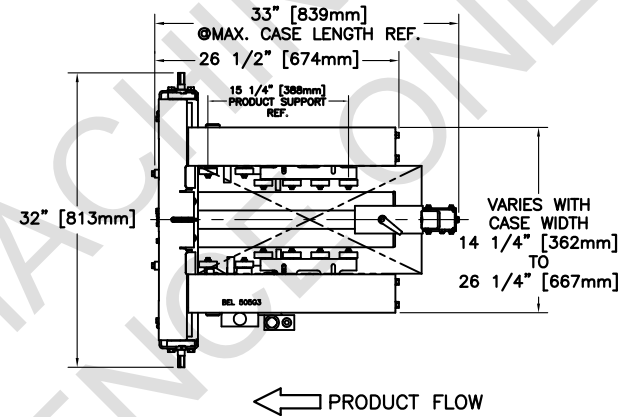
FRONT LEG SCREW LENGTH		IN/OUTFEED HT.	FRONT LEG SCREW LENGTH		IN/OUTFEED HT.
12"	29" MIN. [725mm MIN.]	32" MAX. 813mm MAX.]	12"	33" MIN. [838mm MIN.]	36" MAX. 914mm MAX.]
6"	25.5" MIN.* [648mm MIN.]	28" MAX. 711mm MAX.]	6"	28" MIN.* [711mm MIN.]	33" MAX. 838mm MAX.]

*6" SCREW REQUIRED AT FRONT LEG FOR MINIMUM POSSIBLE HEIGHT

CASE SIZE RANGE

	MIN.	MAX.
LENGTH	8" [203mm]	24" [610mm]
WIDTH	6" [152mm]	18" [457mm]
HEIGHT	3" [76mm]	(NO LIMIT)

[FOR OTHER CASE SIZE RANGES, CONSULT THE FACTORY]



COMPRESSED AIR SUPPLY CONNECTION: 1/4" AIR TUBE
PRESSURE: 65-100 PSI
AIR CONSUMPTION: ~1.1CFM

25.5" [648mm] MIN.*
31.5" [800mm] MAX.
IN/OUTFEED HEIGHT WITH STANDARD FOOTPAD LEG EXTENSIONS

*6" SCREW REQUIRED AT FRONT LEG FOR MINIMUM POSSIBLE HEIGHT

REV	DESCRIPTION	DATE	BY	APPROVED
05	UPDATE LEG EXTENSION OPTION DIMS.	18-01-04	PV	
04	ADDED UTILITY SPEC	17-05-03	KLAM	
03	UPDATE VIEWS & BORDER	08-05-28	PV	
REV	DESCRIPTION	DATE	BY	APPROVED
REVISIONS				

THE INFORMATION CONTAINED IN THIS DRAWING IS THE SOLE PROPERTY OF WEXAR PACKAGING MACHINERY INC. - BELCOR INDUSTRIES DIVISION. ANY REPRODUCTION IN PART OR AS A WHOLE WITHOUT THE WRITTEN PERMISSION OF WEXAR PACKAGING MACHINERY INC. - BELCOR INDUSTRIES DIVISION IS PROHIBITED.

MATERIAL: STEEL	ALL DIMENSIONS IN INCHES. DO NOT SCALE DRAWING (2D DRAWING)	TOLERANCE .X ±.015 .XX ±.010 .XXX ±.005 FRACT.: ±1/32
SIZE: CODE: Z56-525	MODEL: 505 G3	DRAWN BY: PS/PV
FINISH: ZINC PLATED	COLOR: -	DATE (Y-M-D): 04-10-19

APPROVED BY: _____

DWG No: 75-561 REV: 05

wexar BELCOR INDUSTRIES DIVISION
WEXAR PACKAGING MACHINERY INC.
TITLE: BEL 505 G3 'VERSA-PACK' PACKING STATION