

EVERYTHING YOU NEED TO KNOW TO install your wallpaper

TOOLS



cutter



plumb



staircase



pencil



bucket of water



TNT paper glue



music



plastic spatula



measuring tape



brush and roller



clean cloths

BEFORE YOU START...

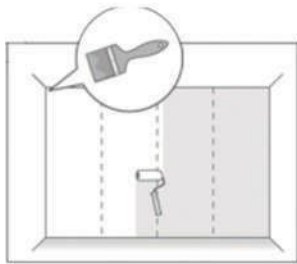
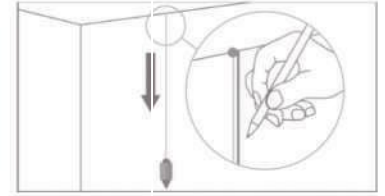
- ✓ Make sure you have enough wallpaper and that the rolls are of the same color.
- ✓ Consider whether the model has a case or rapport: i.e. whether the design has to follow a sequence when installing the strips one after the other on the wall. In some cases, the case is optional and the placement is random.
- ✓ Confirm that the wall is perfect for wallpapering: completely smooth and dry, with at least one coat of white paint. Remove small bumps with a spatula if necessary or use sandpaper to remove any imperfections.
- ✓ Check the orientation of the design. Turn the strip over if necessary to get the design in the correct direction. In most cases, the wallpaper comes in the opposite direction to that in which it is to be installed on the wall.

PREPARE WALLPAPER GLUE

Follow the manufacturer's instructions when preparing the glue to be used to install your wallpaper. It is important that the glue is suitable for non-woven (TNT) wallpaper. In the case of TNT wallpaper, the glue is applied to the wall and not to the paper.

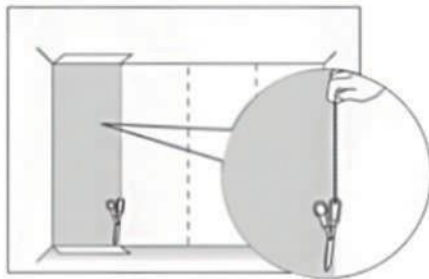
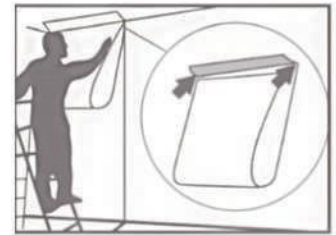
¿ALL READY? ¡let's get started!

1. Cut the roll taking the height of the wall as a reference and adding 4 cm at the top and bottom (wall height + 8 cm). Draw a line on the wall with the help of a plumb line taking the corner of the wall as a reference.



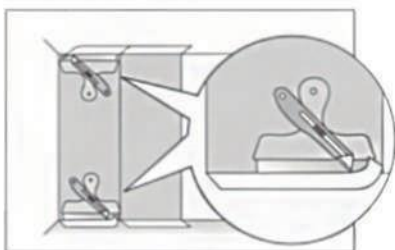
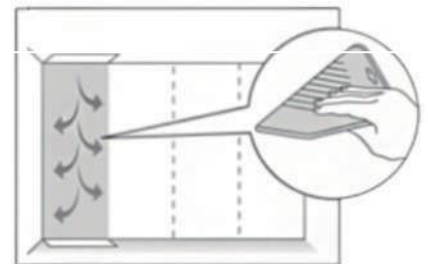
2. Apply the glue to the wall (not to the paper) over an area of about one metre. It is not necessary to apply too much glue: the important thing is to reinforce the edges well.

3. Fold the paper from the ends towards the middle of the strip and start laying the strip leaving the top part, leaving the 3 cm top margin outside. Check that the strip is straight with the help of the line drawn with the plumb line.



4. Press the strip from the top to the bottom and from the centre to the ends with the help of the spatula, avoiding air bubbles inside.

5. Repeat the same steps with the following strips. If the model has a case, make sure to place the next strip taking into account the correct placement of the drawings.



6. Cut off the paper scraps from the top and bottom with a sharp cutter. Completely remove any excess glue that may be left between the strips with a clean, damp cloth before the glue dries.



4 tips from professionals

1

Finish the installation by cleaning with a damp cloth and a neutral soap the excess glue that usually appears especially at the junction of the strips with the edges. It is important to completely remove the excess glue while it is still wet. Although the glue is transparent, the glue residue on the paper may turn yellowish over time.

2

If in the middle of a strip you notice that it is not straight, no problem, you can peel off what was already in place and start the process again. If the glue is not yet dry, you can peel off and re-glue during the installation process to ensure that the strip is perfectly in place.

3

If you are installing wallpaper for the first time, it is normal that the first few strips will not be 100% perfect until you get the hang of it. That's why our advice is to start with an inconspicuous area, such as behind a door or the wall where a wardrobe will go, for example.

4

If you are going to install a wallpaper with a white background, pay special attention to the preparation of the wall, as in these cases, damages can be more noticeable. Check that the wall is smooth and free of bumps. Clean any dirt stains that may cause the wallpaper to show through, such as small pencil marks.