

# Blend 4

## PRODUCT TECHNICAL INFORMATION SHEET

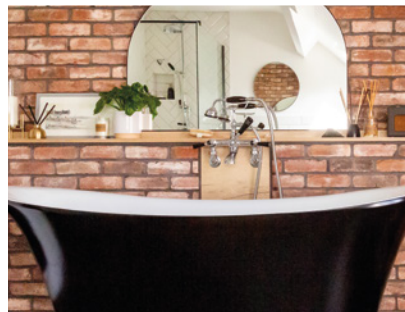
<b>MANUFACTURING LOCATION</b>	Belgium/UK
<b>TYPE</b>	Cut Brick Slip
<b>COLOUR</b>	Red Multi
<b>APPEARANCE</b>	Tumbled
<b>WORK SIZE (MM)</b>	215 x 22* x 65
<b>QUANTITY PER M<sup>2</sup></b>	60
<b>INDIVIDUAL DRY SLIP WEIGHT (KG)</b>	TBC
<small>*other thicknesses available on request</small>	

## TECHNICAL PROPERTIES TO BS EN 771-1

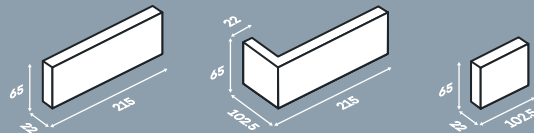
<b>SIZE TOLERANCE</b> (mean/range)	Tm/Rm
<b>GROSS DRY DENSITY</b> (kg/m <sup>3</sup> /tolerance)	1650 (D1)
<b>COMPRESSIVE STRENGTH</b> (N/mm <sup>2</sup> )	NPD
<b>THERMAL CONDUCTIVITY</b> (W/(m·K)) <small>λ10, dry, unit value (EN 1745 tabulated: S1)</small>	P=90% 0.69
<b>DURABILITY DESIGNATION</b>	F2
<b>WATER ABSORPTION</b> (%)	≤14
<b>INITIAL RATE OF WATER ABSORPTION</b> <small>(kg/(m<sup>2</sup>·min))</small>	Min 1.0 Max 5.0
<b>ACTIVE SOLUBLE SALTS</b>	S2
<b>REACTION TO FIRE</b>	Class A1

**ISSUE DATE:01/02/2022**

Technical data correct at time of issue. Individual dry slip weights can vary and are for guidance only. NPD = No Performance Determined. Due to the limitations of screen and print colour representation of product images it is advised that brick samples are viewed prior to ordering.



AVAILABLE IN FULL, CORNER & HALF (mm)



CONTACT US

03338 804807

support@thebricktilecompany.com

www.bricktilecompany.com