

PALOMA
SOFA



W 240 cm | 95"
D 85 cm | 33,5"
H 72 cm | 28"
SH 40 cm | 15,7"

PRODUCT FEATURES

Structure in Solid Oak wood. Upholstered in Boucle Burnt Orange.

PRODUCT OPTIONS

WOOD FINISHES:

Available in all COLLECTOR woods swatches.

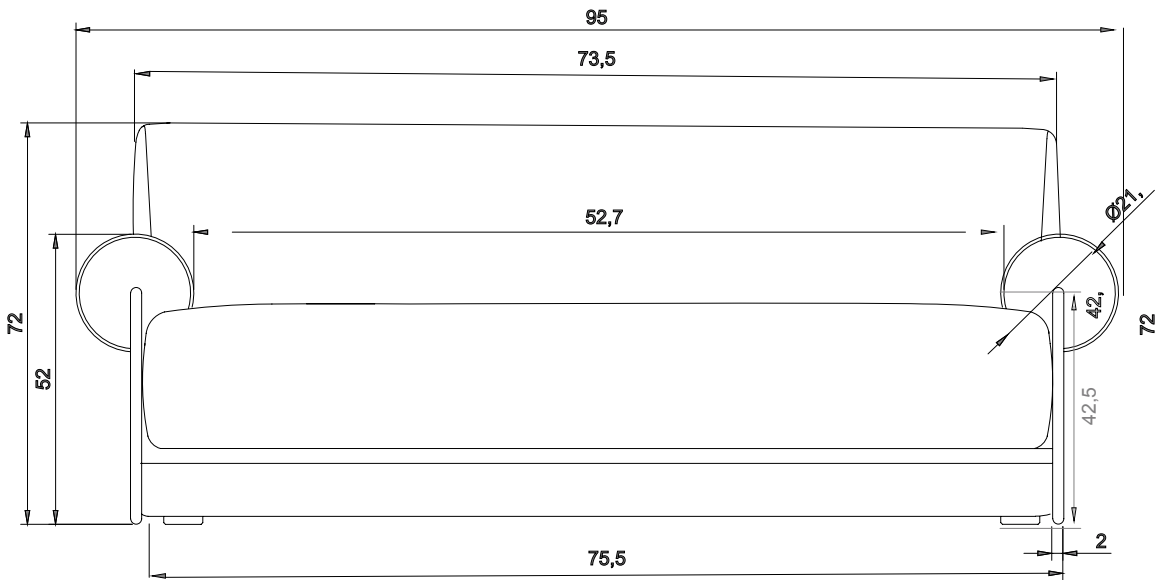
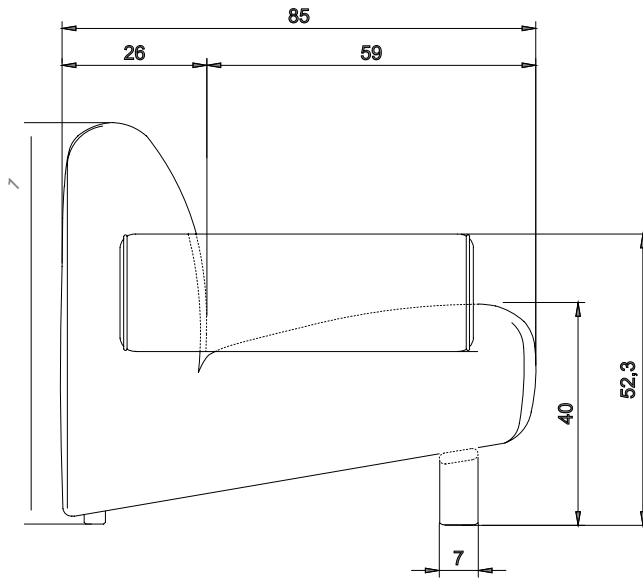
Available to be lacquered in one of Collectors RAL Colors

UPHOLSTERY:

Available in all COLLECTOR leathers and fabrics.

Available in client's own material.

PALOMA SOFA



WOOD



Oak



Walnut



Dark Oak



Smoked Oak



Black Oak

RAL



1005

3012

7022

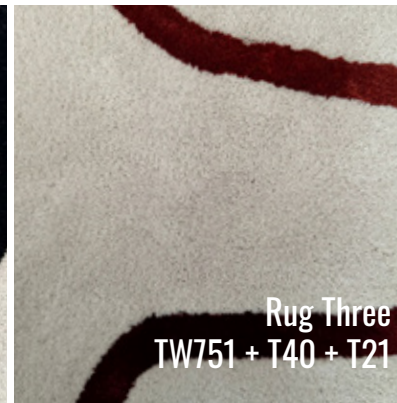
9001

COLLECTOR

www.collectorgroup.pt

The right to discontinue and make changes is reserved.
The colors shown here are merely representative, they may suffer variations.

RUGS



ZUMIREZ FABRIC

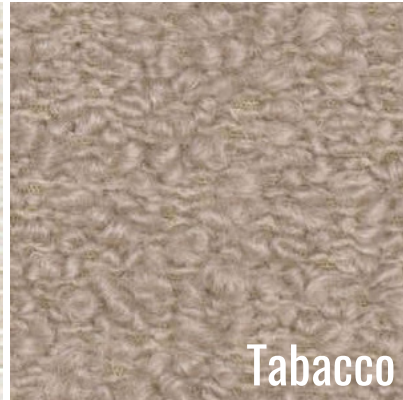
TECHNICAL DETAILS

Composition: 68% WO 19% CO 13% PL
Width: 136cm
RUB TEST: 40.000
Type: Textured Weave

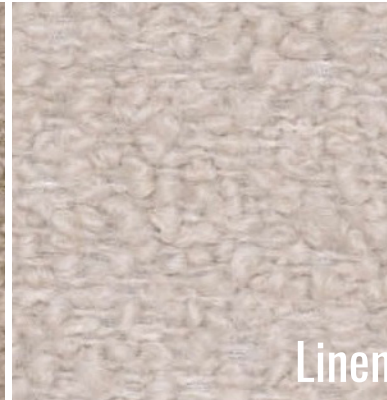
Washing Conditions



Moonbeam



Tabacco



Linen

GILA FABRIC

TECHNICAL DETAILS

Composition: 32% Wool, 31% Polyacrylic,
28% Cotton, 9% Polyester
Width: 137 cm
RUB TEST: 40.000
Type: Weave, Suede / Faux

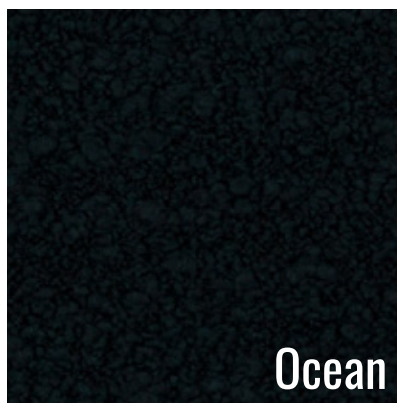
Washing Conditions



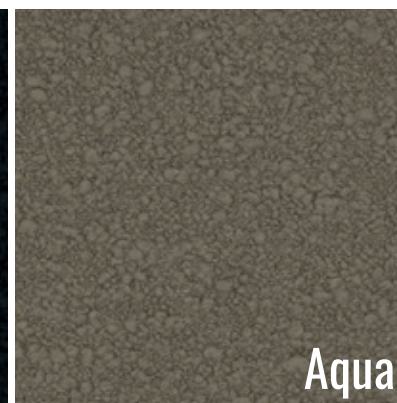
Smoke



Saffron



Ocean



Aqua

BOUCLE FABRIC

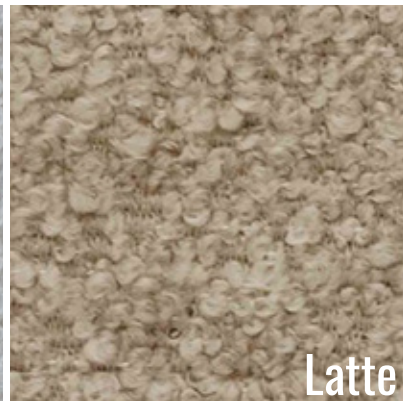
TECHNICAL DETAILS

Composition: 42%WO 33%CV 24%CO 1%PA
Width: 130cm
RUB TEST: 40.000
Type: Textured Weave

Washing Conditions



White



Latte



Celadon



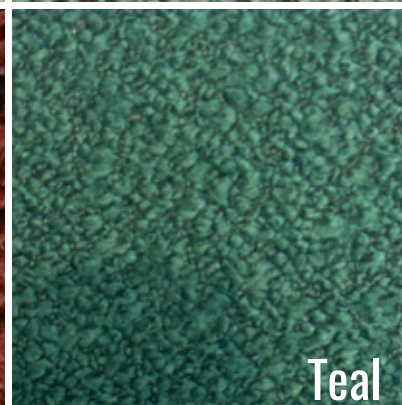
Forest



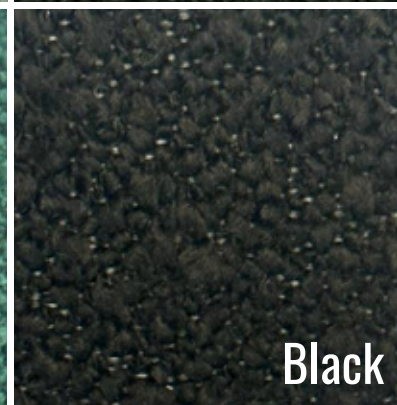
Gold



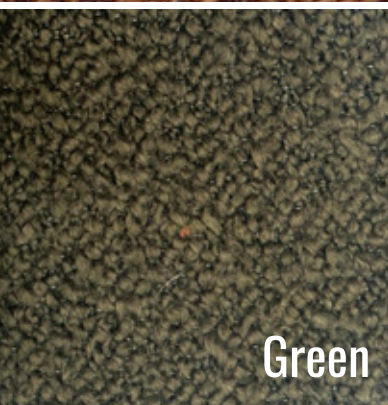
Terracota



Teal



Black



Green



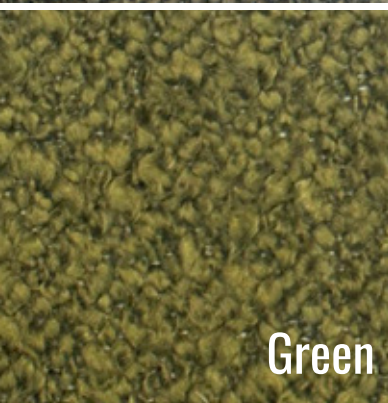
Burnt-Orange



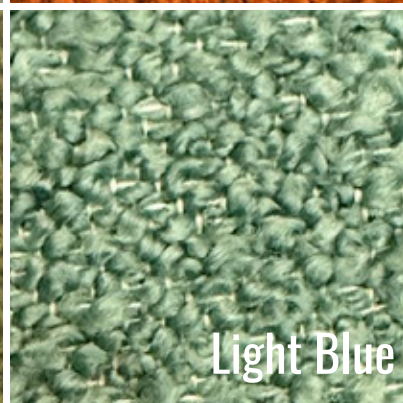
Charcoal



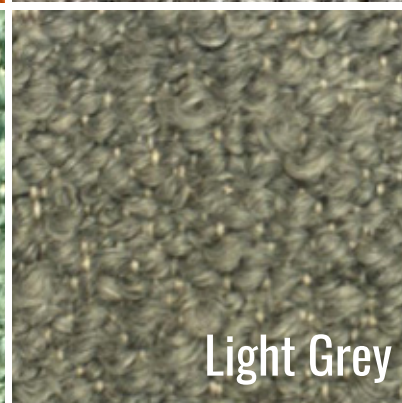
Dark-Brown



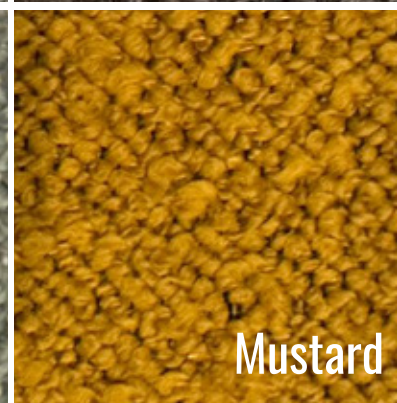
Green



Light Blue



Light Grey



Mustard

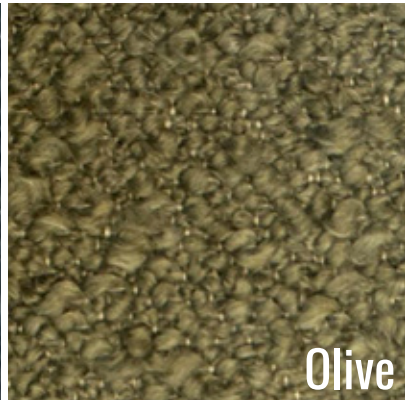
COLLECTOR

www.collectorgroup.pt

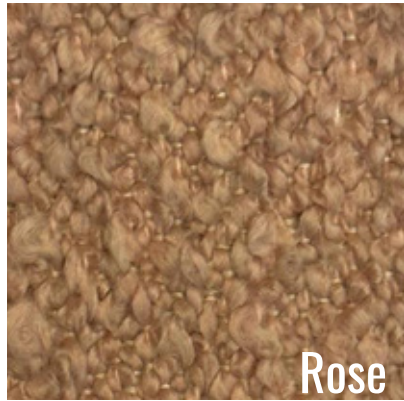
The right to discontinue and make changes is reserved.
The colors shown here are merely representative, they may suffer variations.



Night Blue



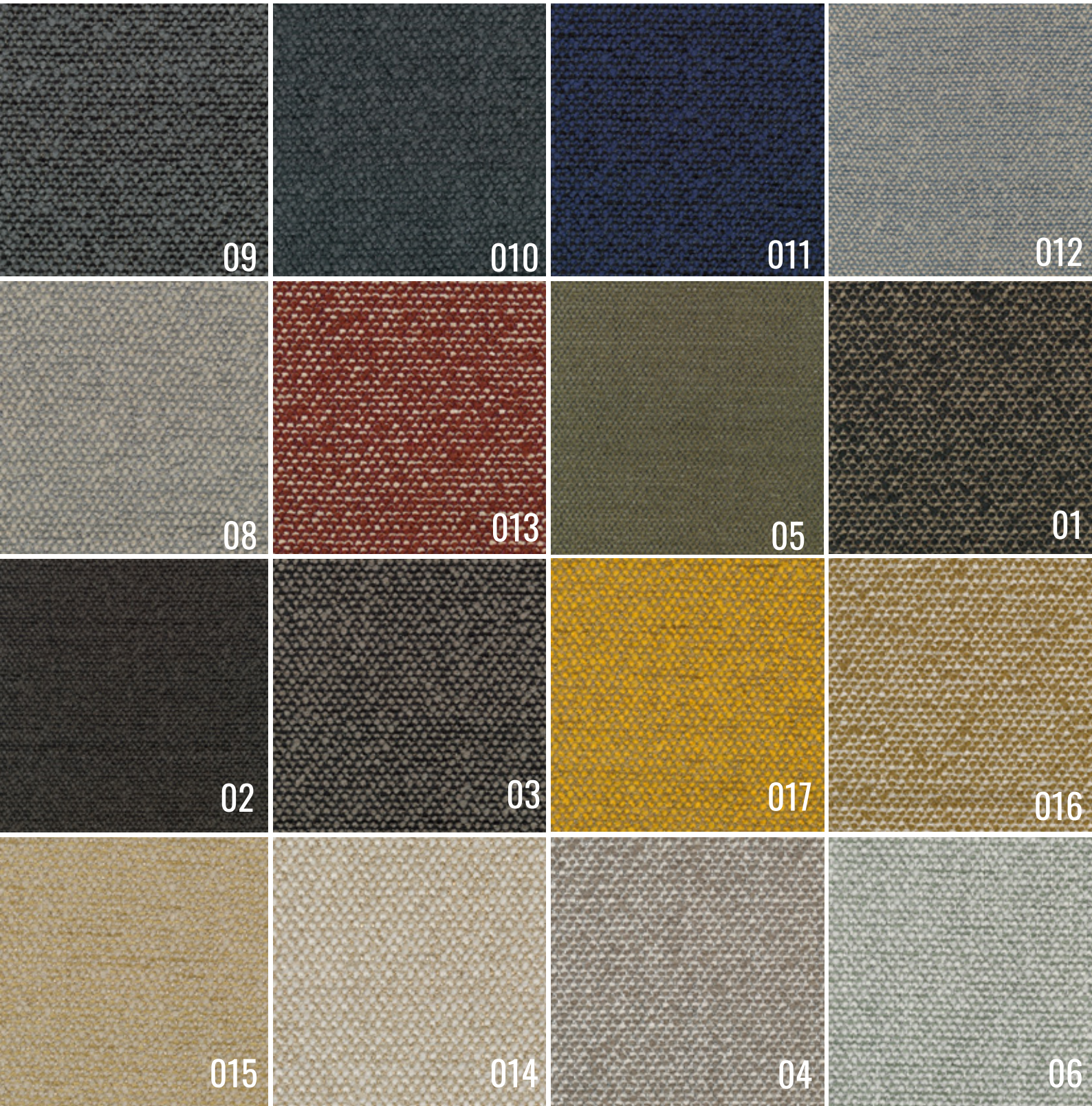
Olive



Rose

SAFFIRE FABRIC

Washing Conditions

COLLECTOR

www.collectorgroup.pt

The right to discontinue and make changes is reserved.
The colors shown here are merely representative, they may suffer variations.

GITANO FABRIC

TECHNICAL DETAILS

Composition: 100%CO

Width: 140cm

Martindale: 33000

Type: Basket dyed, Solid

Washing Conditions



COLLECTOR

www.collectorgroup.pt

The right to discontinue and make changes is reserved.
The colors shown here are merely representative, they may suffer variations.

BOHO FABRIC

TECHNICAL DETAILS

Composition: 84% PL + 16% AC
Width: 140cm
Weight: 900 g/ml
Martindale: > 45.000 CC

Washing Conditions



COLLECTOR

www.collectorgroup.pt

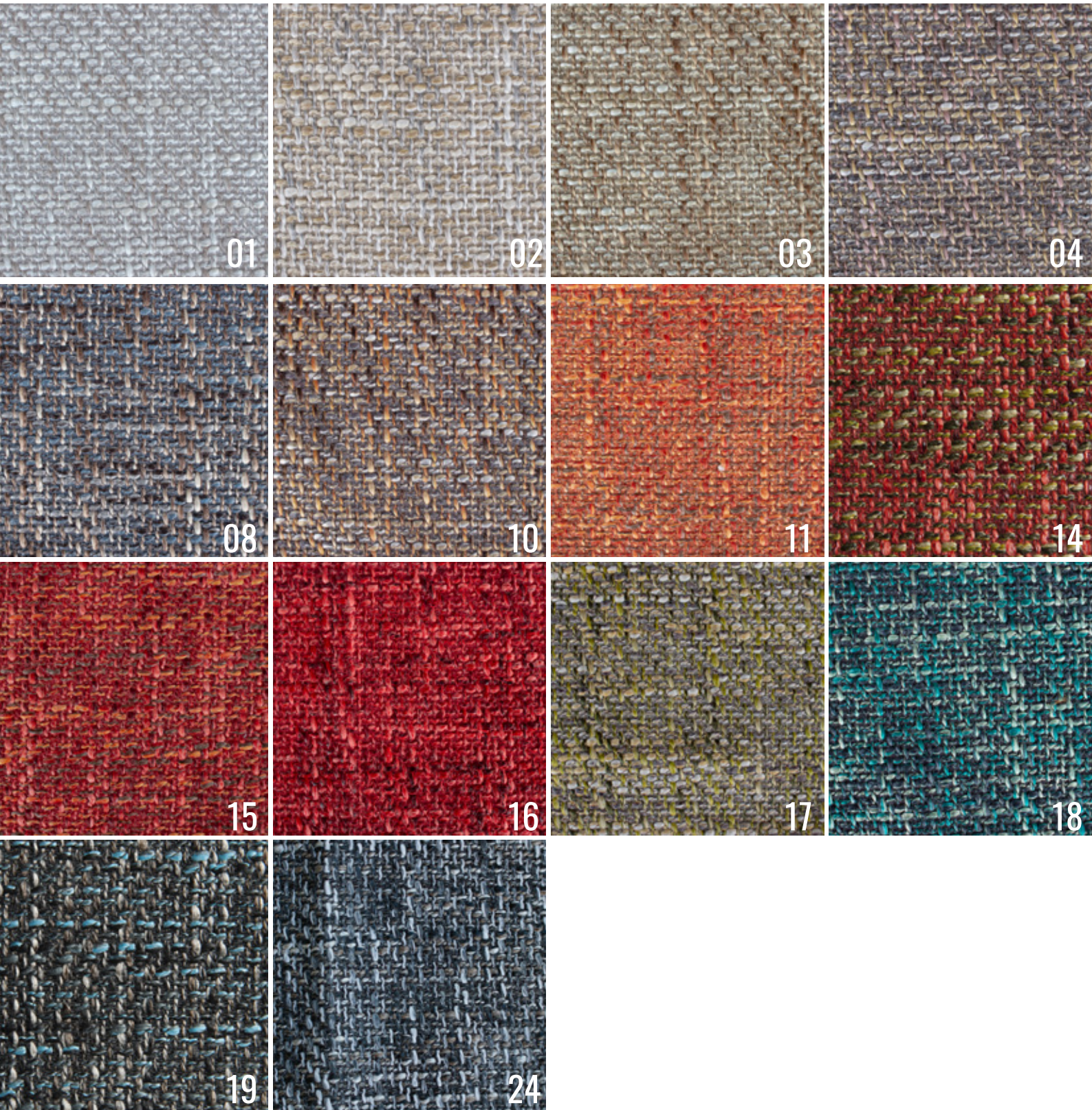
The right to discontinue and make changes is reserved.
The colors shown here are merely representative, they may suffer variations.

BETREND FABRIC

TECHNICAL DETAILS

Composition: 53.3% AC + 46.7% PL
Width: 140cm
Weight: 653,8 g/m
Martindale: >50.000

Washing Conditions

COLLECTOR

www.collectorgroup.pt

The right to discontinue and make changes is reserved.
The colors shown here are merely representative, they may suffer variations.

FAMIGLIA FABRIC

TECHNICAL DETAILS

Composition: 85%PES + 15%CO

Width: 140cm

Weight: 700 g/ml

Martindale: 30.000

Washing Conditions



COLLECTOR

www.collectorgroup.pt

The right to discontinue and make changes is reserved.
The colors shown here are merely representative, they may suffer variations.

SIEGE FABRIC

TECHNICAL DETAILS

Composition: 100% CO
Width: 140cm
Weight: 560 g/m
Martindale: 40.000
Lightfastness: 4

Washing Conditions



COLLECTOR

www.collectorgroup.pt

The right to discontinue and make changes is reserved.
The colors shown here are merely representative, they may suffer variations.

SIEGE FABRIC

TECHNICAL DETAILS

Composition: 100% CO
Width: 140cm
Weight: 560 g/m
Martindale: 40.000
Lightfastness: 4

Washing Conditions



0785



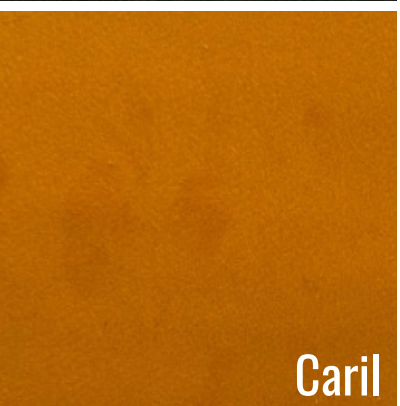
0157



Pink Sand



Natural Nude



Caril



Ambar

LINEA LEATHER

TECHNICAL DETAILS

Pattern: No

Anti-fire: BS EN 1021-1-2:2006

Dimensions: 4,8/5,0m2 Average

Thickness: 0,8/1,0mm

Composition: Genuine leather



Crema



Testamoro



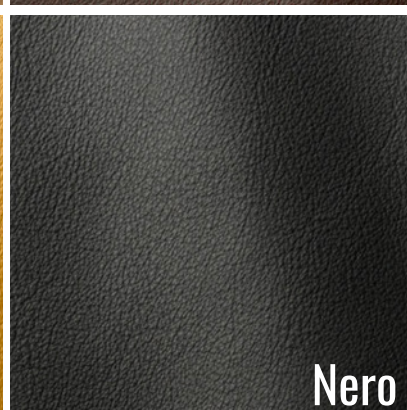
Mattone



Bordeaux



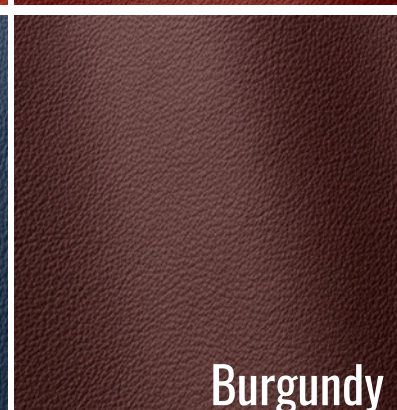
Giallino



Nero



Azzurro



Burgundy



Green



Verdone



Gesso



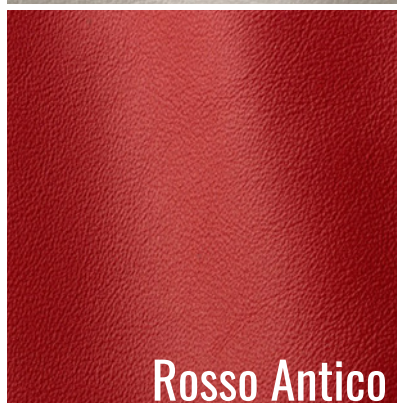
Avorio



Antracite



Moretto



Rosso Antico



Fondo Tinta

COLLECTOR

www.collectorgroup.pt

The right to discontinue and make changes is reserved.
The colors shown here are merely representative, they may suffer variations.

SEQUOIA LEATHER

TECHNICAL DETAILS

Pattern: No

Anti-fire: BS EN 1021-1-2:2006

Dimensions: 4,8/5,0m2

Average Thickness: 0,9/1,1mm

Composition: Genuine leather



Cuio



Cioccolato



Terra



Carbone



Grigio

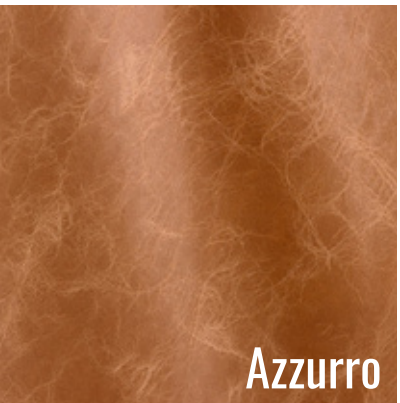
TUSCANIA LEATHER

TECHNICAL DETAILS

Composition: 100% PL

Width: 140cm

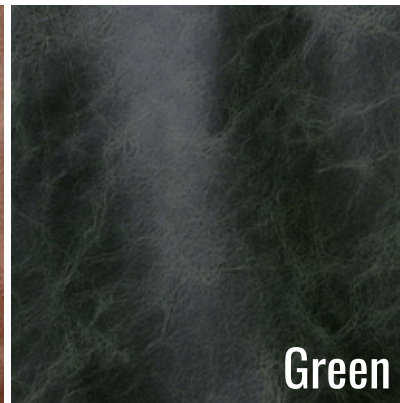
Weight: 812g/m



Azzurro



Cobblestone



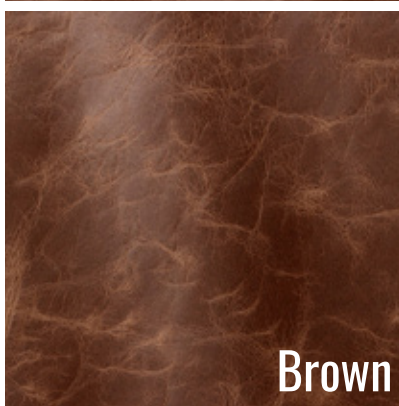
Green



Dark Brown



Bordeaux



Brown



Blackwood



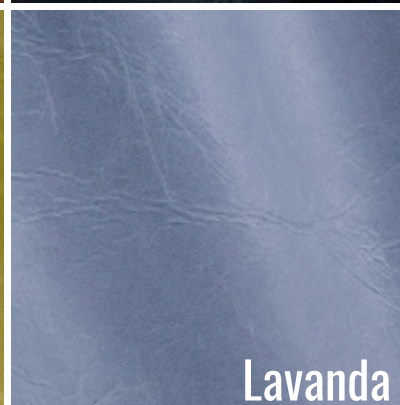
Cognac



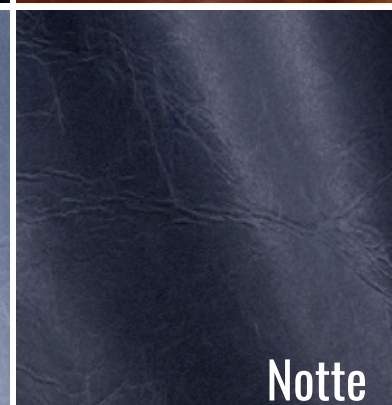
Rust



Calery



Lavanda



Notte

COLLECTOR

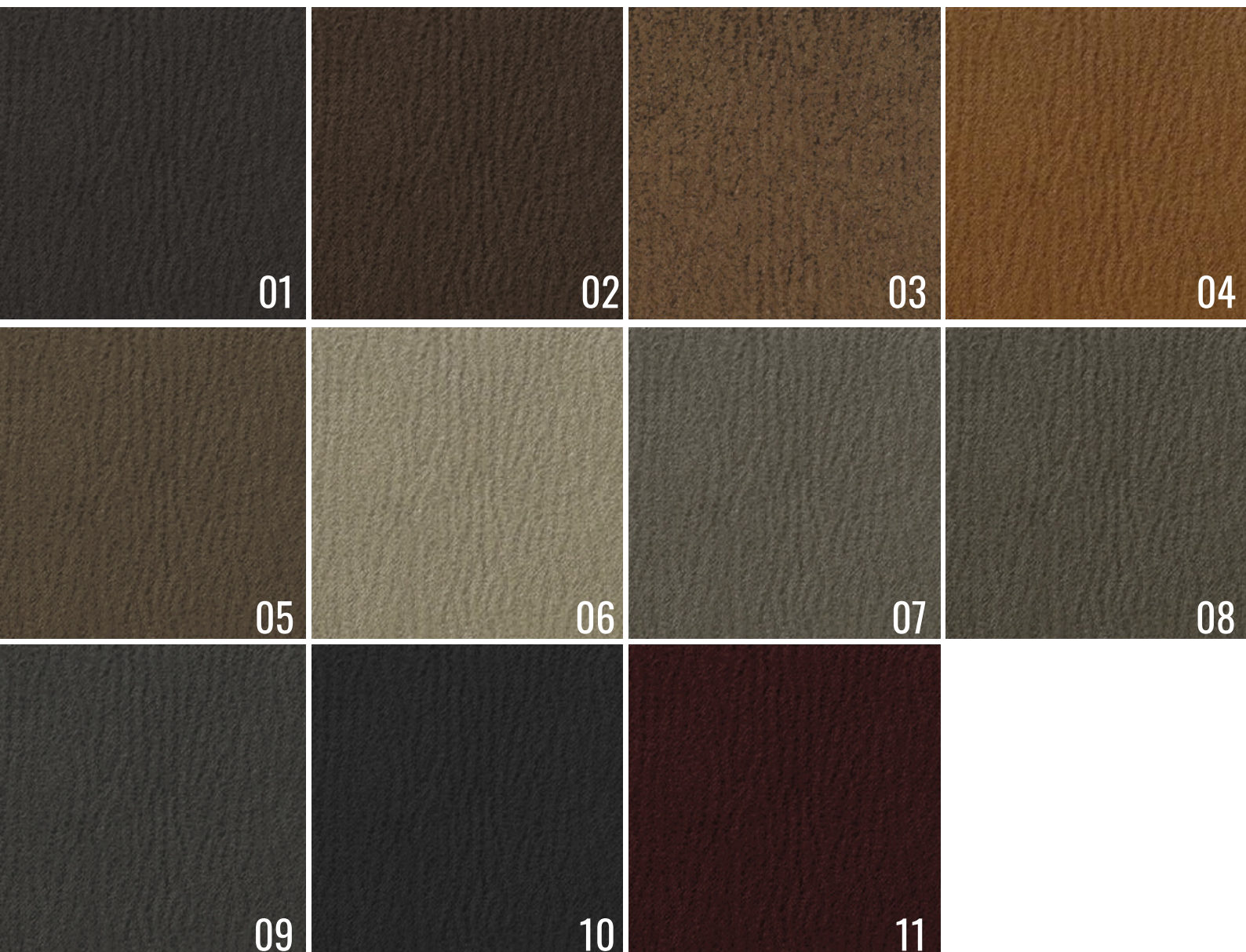
www.collectorgroup.pt

The right to discontinue and make changes is reserved.
The colors shown here are merely representative, they may suffer variations.

TEXANO LEATHER

TECHNICAL DETAILS

Pattern: No
Anti-fire: BS EN 1021-1-2:2006
Dimensions: 4,8/5,0m2
Average Thickness: 0,9/1,1mm
Composition: Genuine leather



COLLECTOR

www.collectorgroup.pt

The right to discontinue and make changes is reserved.
The colors shown here are merely representative, they may suffer variations.