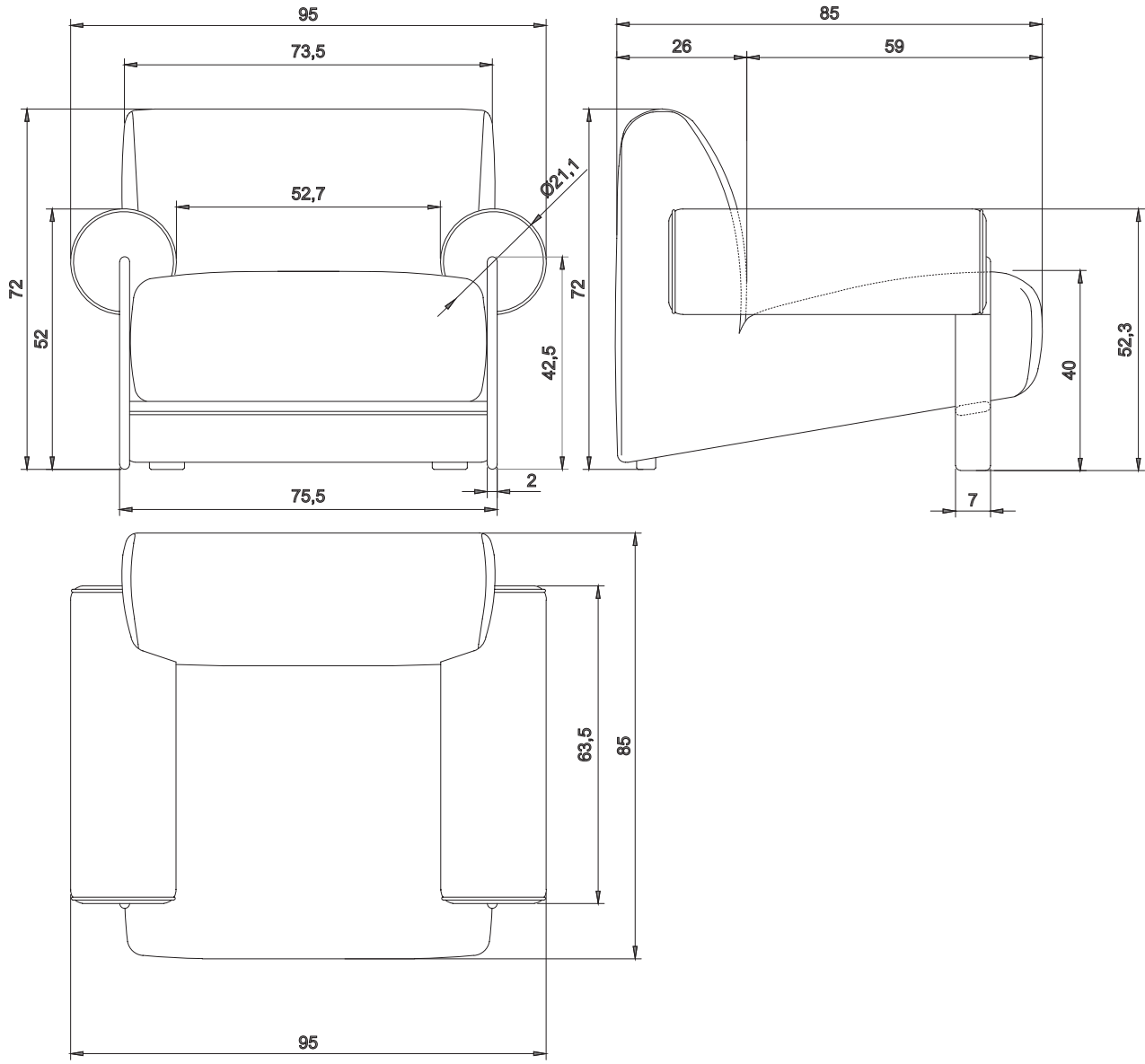


**PALOMA**  
ARMCHAIR



# PALOMA ARMCHAIR



# PALOMA ARMCHAIR

W 95CM | 37.5"

D 85CM | 33.5"

H 72CM | 28"

## PRODUCT FEATURES

Structure in Solid Walnut wood. Upholstered in Zumirez Moonbeam fabric.

## PRODUCT OPTIONS

### UPHOLSTERY:

Available in all COLLECTOR leathers and fabrics.

Available in client's own material.

# WOOD



**COLLECTOR**

[www.collectorgroup.pt](http://www.collectorgroup.pt)

The right to discontinue and make changes is reserved.  
The colors shown here are merely representative, they may suffer variations.

# BETREND FABRIC

## TECHNICAL DETAILS

**Composition:** 53.3% AC + 46.7% PL

**Width:** 140cm

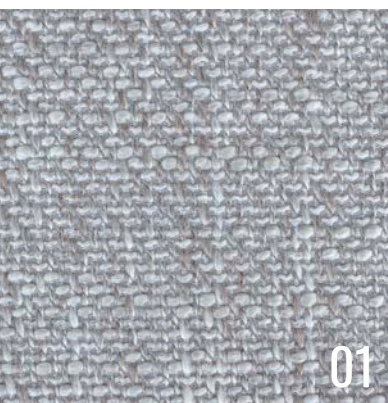
**Weight:** 653,8 g/m

**Martindale:** >50.000

Use



Washing Conditions



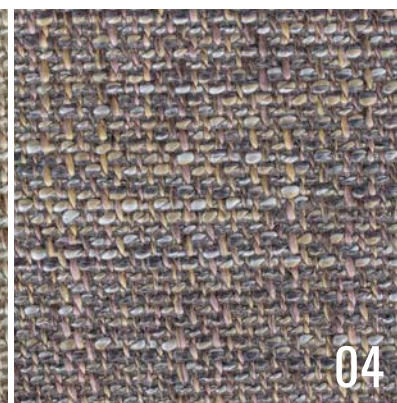
01



02



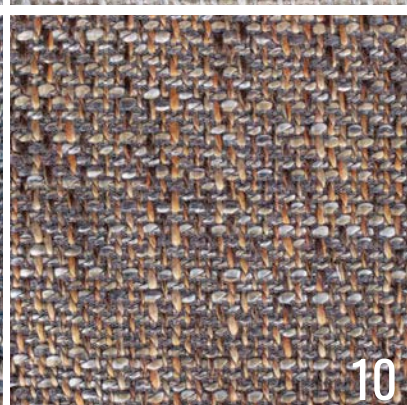
03



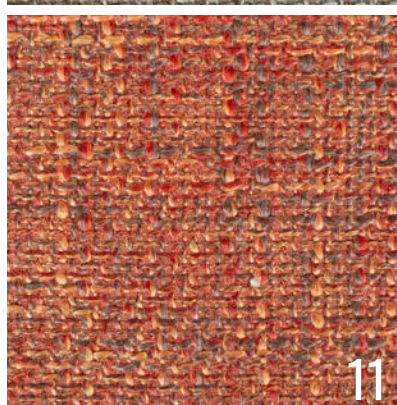
04



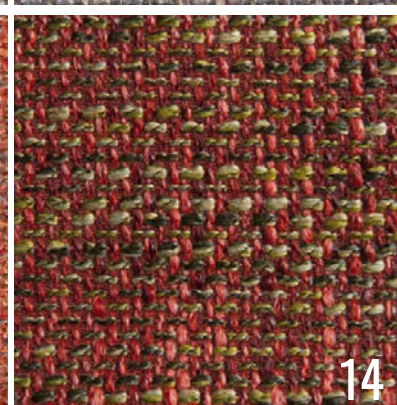
08



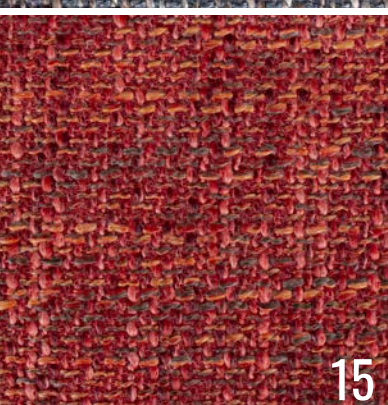
10



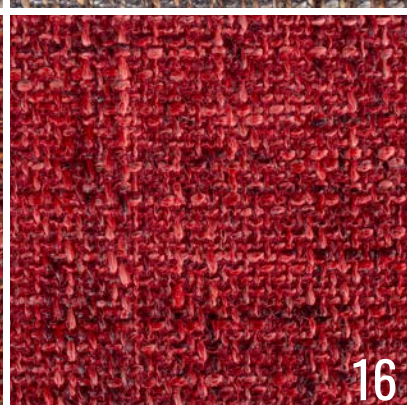
11



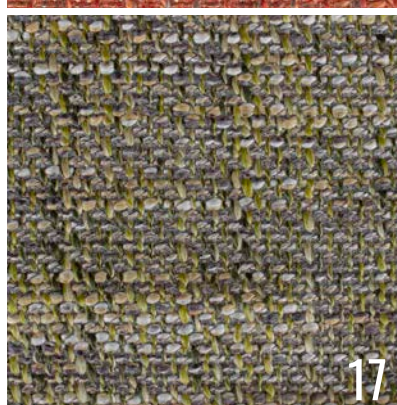
14



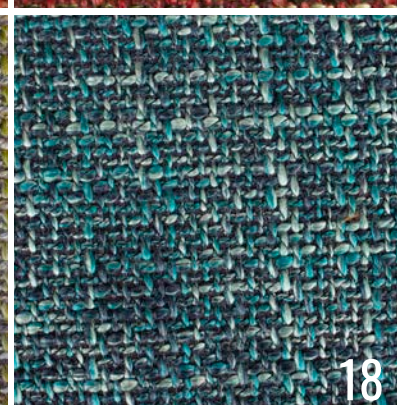
15



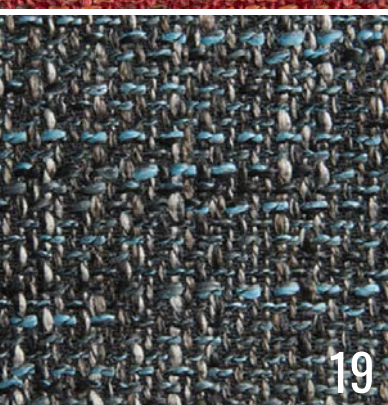
16



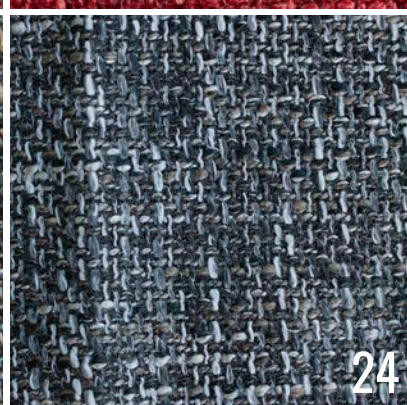
17



18



19



24

# COLLECTOR

[www.collectorgroup.pt](http://www.collectorgroup.pt)

The right to discontinue and make changes is reserved.  
The colors shown here are merely representative, they may suffer variations.

# FAMIGLIA FABRIC

## TECHNICAL DETAILS

**Composition:** 85%PES + 15%CO  
**Width:** 140cm  
**Weight:** 700 g/ml  
**Martindale:** 30.000

Use



Washing Conditions



# COLLECTOR

[www.collectorgroup.pt](http://www.collectorgroup.pt)

The right to discontinue and make changes is reserved.  
The colors shown here are merely representative, they may suffer variations.

# SIEGE FABRIC

## TECHNICAL DETAILS

**Composition:** 100% CO  
**Width:** 140cm  
**Weight:** 560 g/m  
**Martindale:** 40.000  
**Lightfastness:** 4

Use



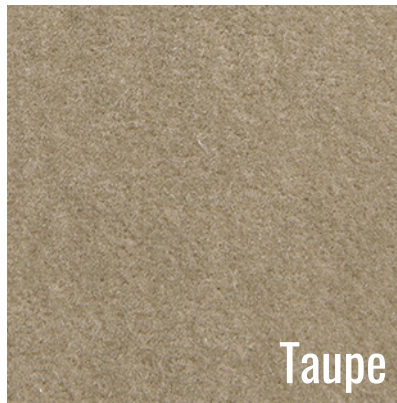
Washing Conditions



Biege



Linen



Taupe



Ivory



Pure Yellow



Hot Coral



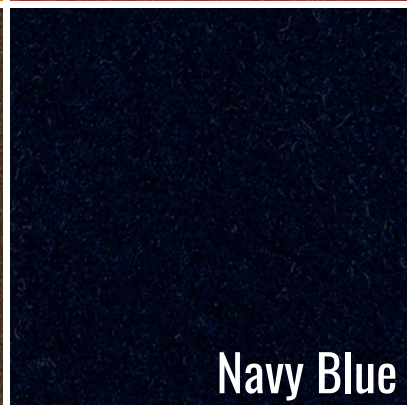
Rubi



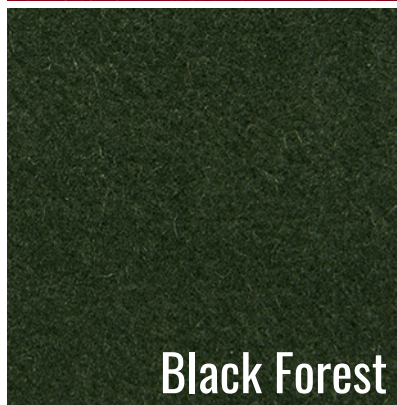
Syrah



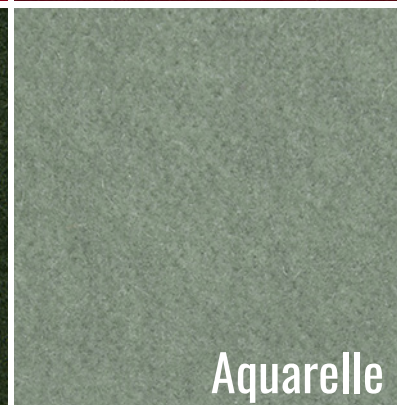
Chocolat



Navy Blue



Black Forest



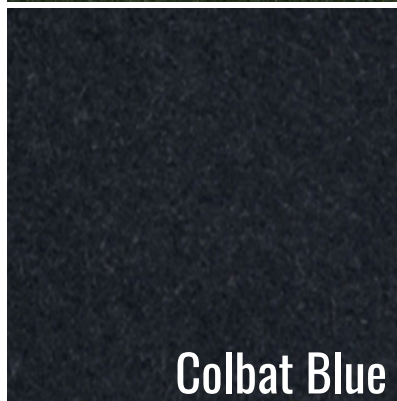
Aquarelle



Steal



Horizon Blue



Colbat Blue



Safari Green

COLLECTOR

[www.collectorgroup.pt](http://www.collectorgroup.pt)

The right to discontinue and make changes is reserved.  
The colors shown here are merely representative, they may suffer variations.

# TULU FABRIC

## TECHNICAL DETAILS

**Composition:** 53.70% AC + 46.30% PL

**Width:** 140cm

**Weight:** 588 g/ml

**Martindale:** > 70.000

**Lightfastness:** 3-4

**Pilling:** 4-5

**FR:** Available in 2 versions BS 5852-1:1979

SOURCE 0 CIGARRET / 1 MATCH

Use



Washing Conditions



## COLLECTOR

[www.collectorgroup.pt](http://www.collectorgroup.pt)

The right to discontinue and make changes is reserved.  
The colors shown here are merely representative, they may suffer variations.



# LINEA LEATHER

## TECHNICAL DETAILS

**Pattern:** No

**Anti-fire:** BS EN 1021-1-2:2006

**Dimensions:** 4,8/5,0m2 Average

**Thickness:** 0,8/1,0mm

**Composition:** Genuine leather



Crema



Testamoro



Mattone



Bordeaux



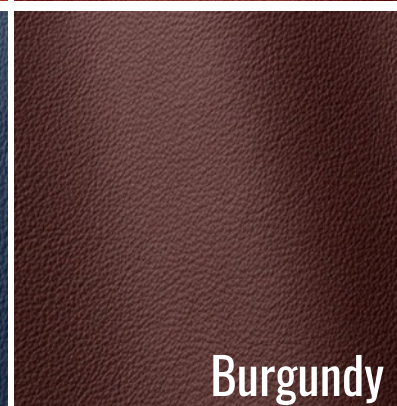
Giallino



Nero



Azzurro



Burgundy



Green



Verdone



Gesso



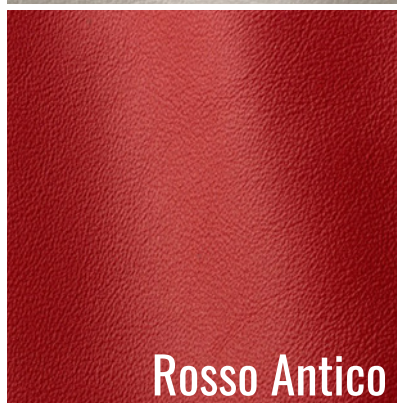
Avorio



Antracite



Moretto



Rosso Antico



Fondo Tinta

## COLLECTOR

[www.collectorgroup.pt](http://www.collectorgroup.pt)

The right to discontinue and make changes is reserved.  
The colors shown here are merely representative, they may suffer variations.

# BOHO FABRIC

## TECHNICAL DETAILS

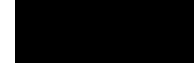
**Composition:** 84% PL + 16% AC

**Width:** 140cm

**Weight:** 900 g/ml

**Martindale:** > 45.000 CC

Use



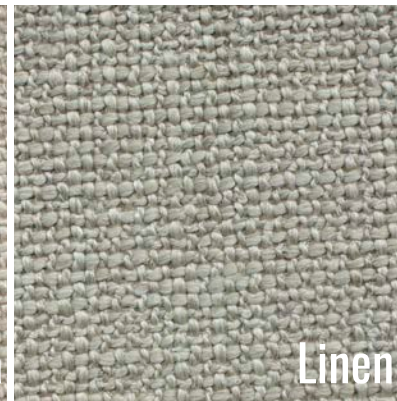
Washing Conditions



Creamy



Natural Raffia



Linen



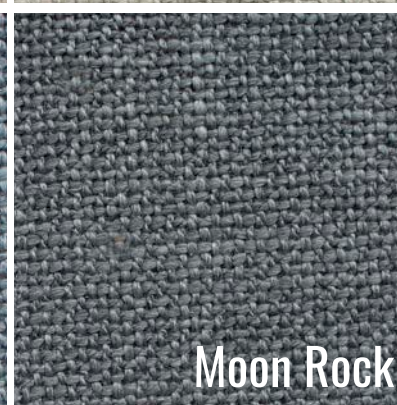
Light Gray



Warm Gray



Stone



Moon Rock



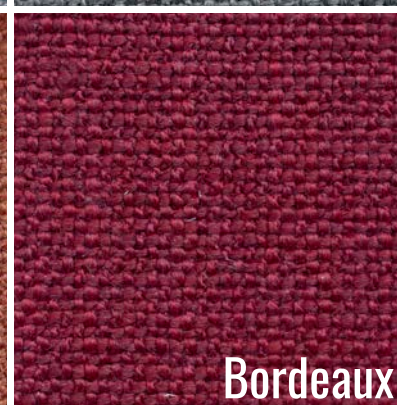
Chocolate



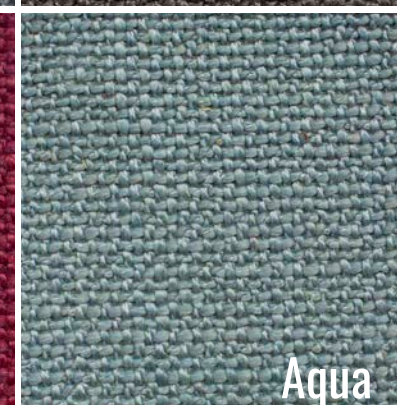
Golden Ocre



Burnt Orange



Bordeaux



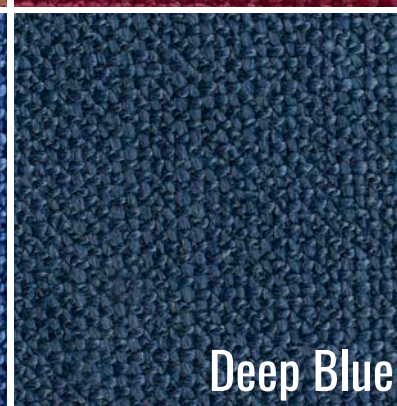
Aqua



Artic Blue



Cobalt blue



Deep Blue



Antracite

## COLLECTOR

[www.collectorgroup.pt](http://www.collectorgroup.pt)

The right to discontinue and make changes is reserved.  
The colors shown here are merely representative, they may suffer variations.

# ZUMIREZ

## FABRIC *PREMIUM*

### TECHNICAL DETAILS

**Composition:** 68% WO 19% CO 13% PL

**Width:** 136cm

**RUB TEST:** 40.000

**Type:** Textured Weave

#### Use



#### Washing Conditions



**Moonbeam**



**Umber**



**Tabacco**

# BOUCLE

## FABRIC *PREMIUM*

### TECHNICAL DETAILS

**Composition:** 96%PI 4%A

**Width:** 140cm

**Weight:** 680gr/m

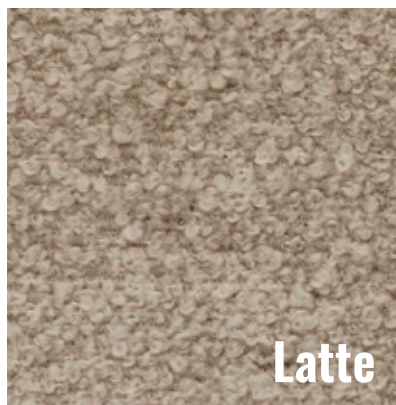
Use



Washing Conditions



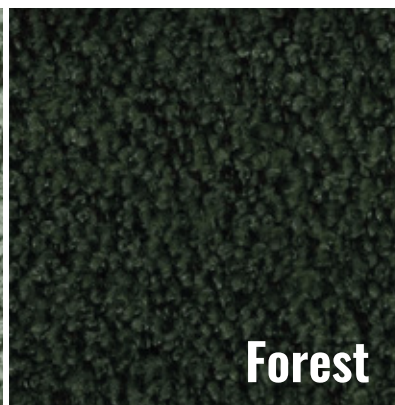
White



Latte



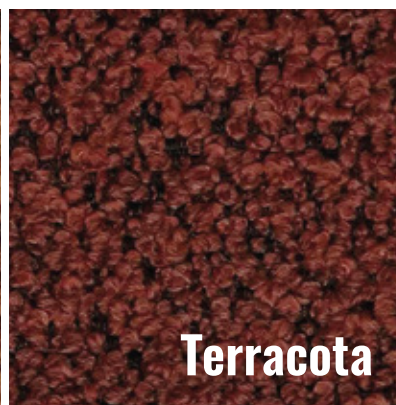
Celadon



Forest



Gold



Terracota

# SEQUOIA LEATHER

## TECHNICAL DETAILS

**Pattern:** No

**Anti-fire:** BS EN 1021-1-2:2006

**Dimensions:** 4,8/5,0m<sup>2</sup>

**Average Thickness:** 0,9/1,1mm

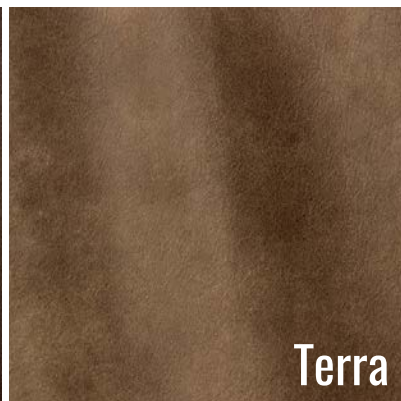
**Composition:** Genuine leather



Cuio



Cioccolato



Terra



Carbone



Grigio

# TEXANO LEATHER

## TECHNICAL DETAILS

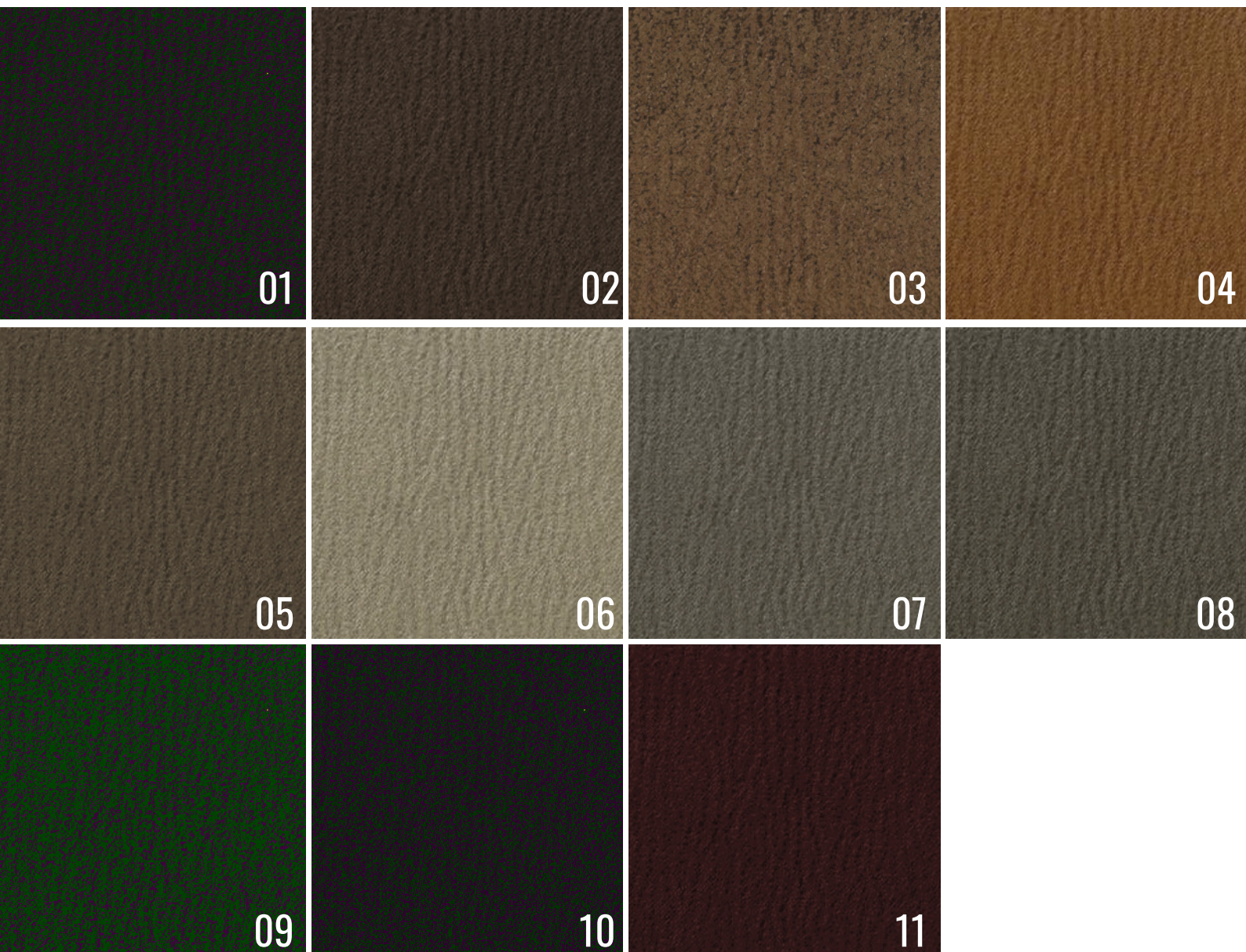
**Pattern:** No

**Anti-fire:** BS EN 1021-1-2:2006

**Dimensions:** 4,8/5,0m<sup>2</sup>

**Average Thickness:** 0,9/1,1mm

**Composition:** Genuine leather



COLLECTOR

[www.collectorgroup.pt](http://www.collectorgroup.pt)

The right to discontinue and make changes is reserved.  
The colors shown here are merely representative, they may suffer variations.

# TUSCANIA LEATHER

## TECHNICAL DETAILS

**Composition:** 100% PL

**Width:** 140cm

**Weight:** 812g/m



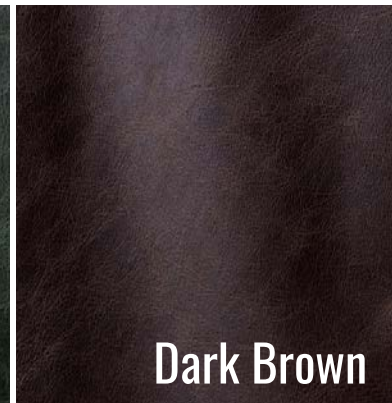
Azzurro



Cobblestone



Green



Dark Brown



Bordeaux



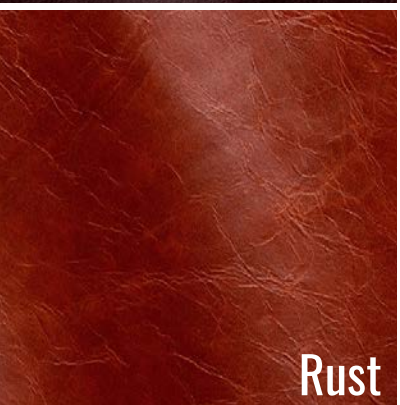
Brown



Blackwood



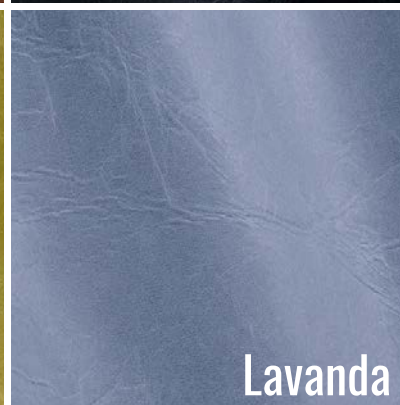
Cognac



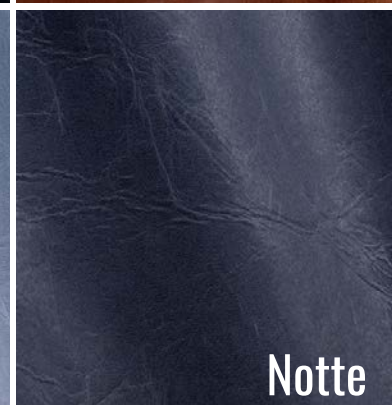
Rust



Calery



Lavanda



Notte

COLLECTOR

[www.collectorgroup.pt](http://www.collectorgroup.pt)

The right to discontinue and make changes is reserved.  
The colors shown here are merely representative, they may suffer variations.