

HUG MODULAR SOFA

“HUG” SOFA IS DEFINED BY CLEAN, SIMPLE LINES AND A DISTINCTIVE ARMREST DETAIL. THE ARMREST, HALF OVERLAPPING THE SEAT CUSHION, CREATES AN INTERLOCKING DETAIL BETWEEN THE TWO ELEMENTS, WHILE THE PADDING, FIRM AND WELCOMING AT THE SAME TIME, COMMUNICATES COMFORT.



Elements



DX Terminal Element Gap



35° Element



Central Element



DX-terminal Element

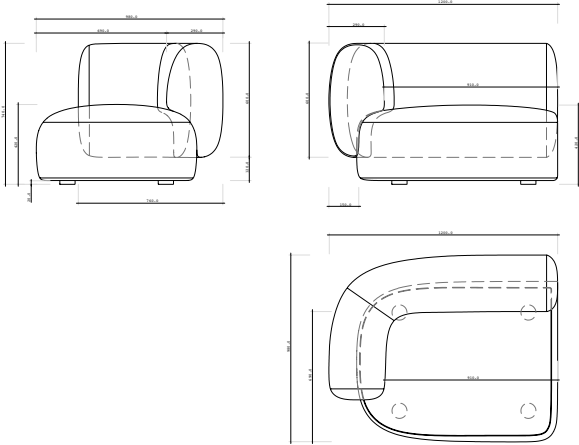


Chaise Longue XL

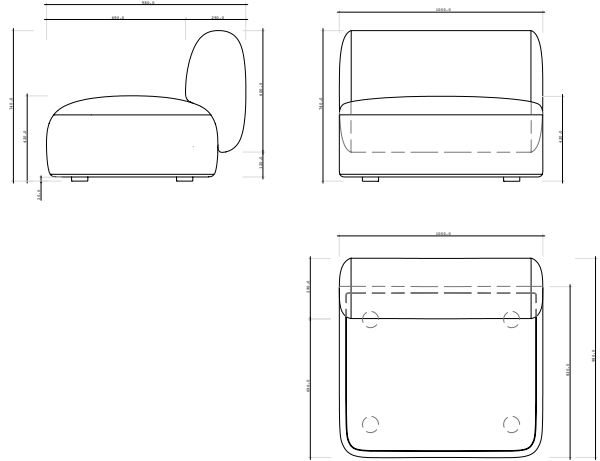


Chaise Longue

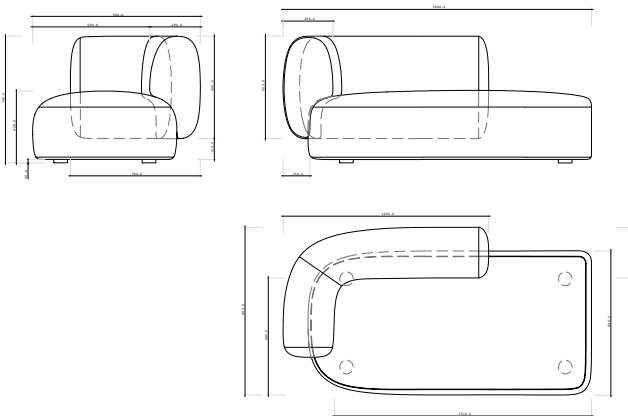
DX Terminal Element Gap



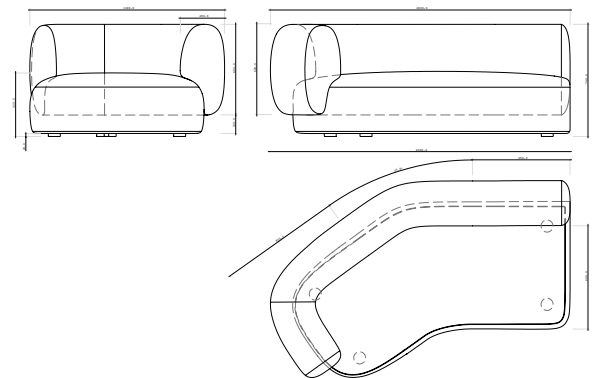
Central Element



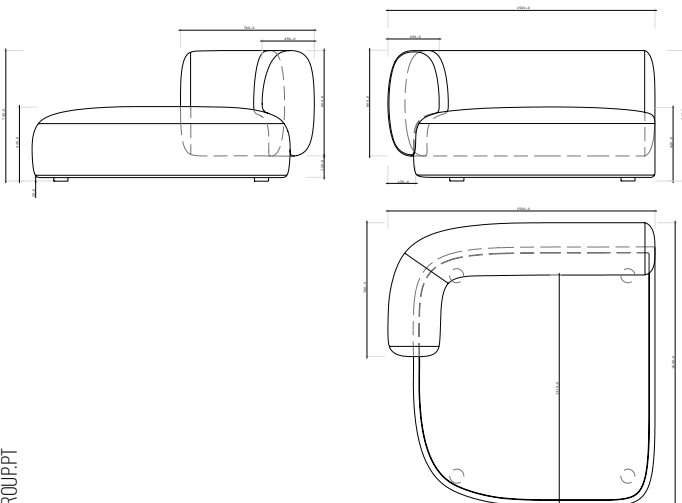
DX-terminal Element



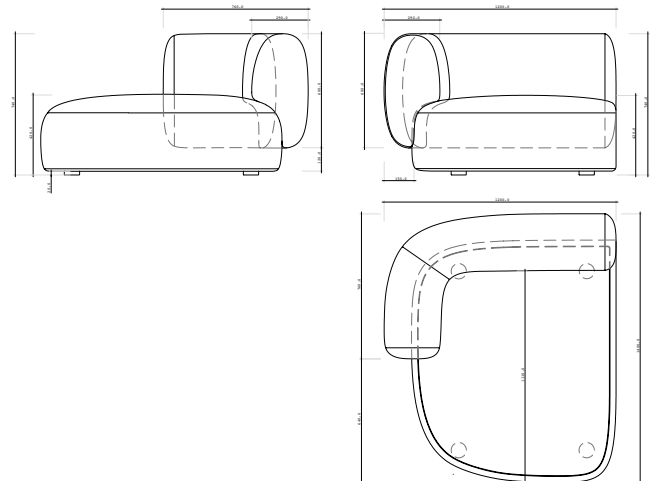
35° Element



Chaise Longue XL



Chaise Longue



.DX Terminal Element _ gap W180cm | 70" H 74cm | 29" D 98cm | 38"

.Chaise Longue XL W 150cm | 59" D160cm | 63" H 74cm 29"

.Central element W 100cm | 39" D 98cm | 39" H 74cm | 29"

.DX terminal element W 120cm D 98cm | 38" H 74cm | 29"

.35° Element W200cm | 78" D98cm | 39" H 74cm | 29"

PRODUCT FEATURES

STRUCTURE IN SOLID OAK WOOD. UPHOLSTERED IN FAMIGLIA 05 FABRIC.

PRODUCT OPTIONS

UPHOLSTERY:

EXTERIOR STRUCTURE UPHOLSTERED IN BOUCLE SNOW FABRIC.

INTERIOR BACKREST AND SEAT CUSHIONS IN FABRIC.

BETREND FABRIC

TECHNICAL DETAILS

Composition: 53.3% AC + 46.7% PL

Width: 140cm

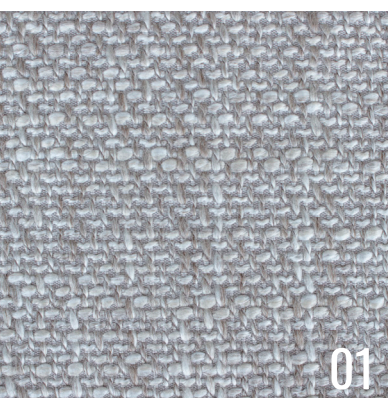
Weight: 653,8 g/m

Martindale: >50.000

Use



Washing Conditions



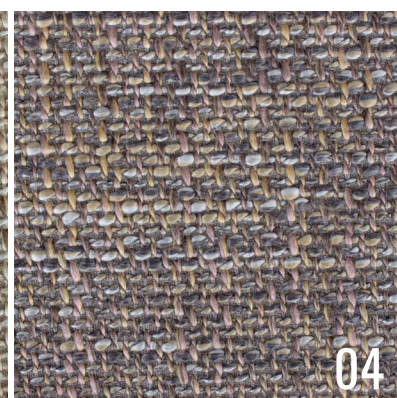
01



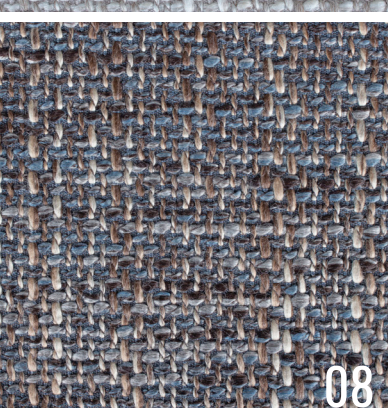
02



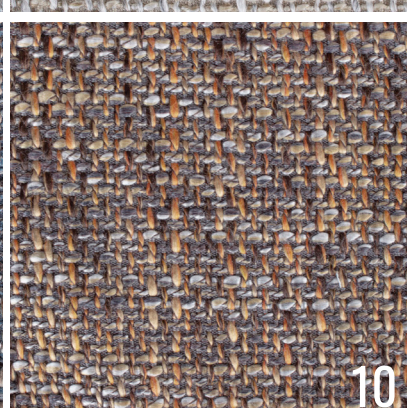
03



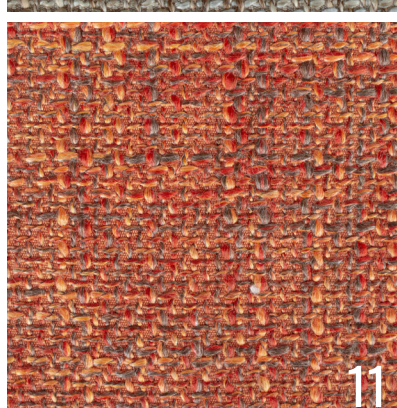
04



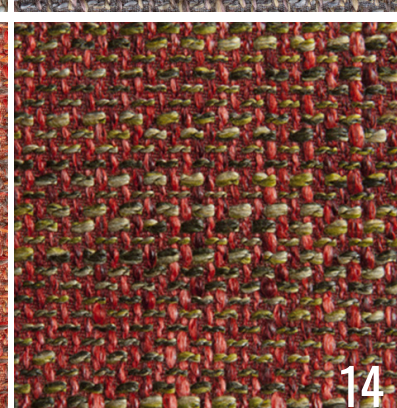
08



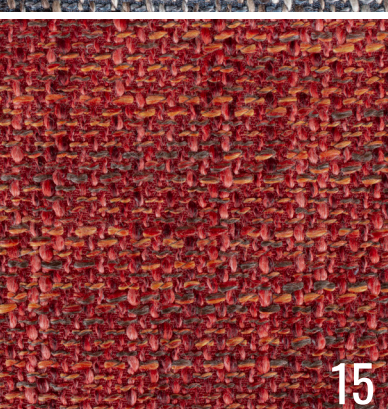
10



11



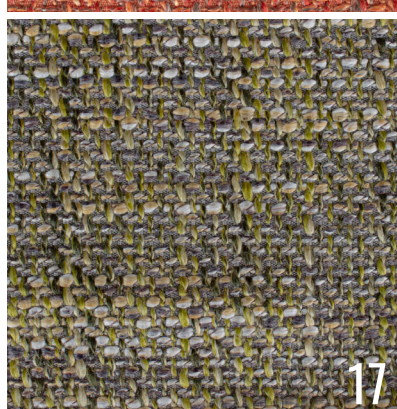
14



15



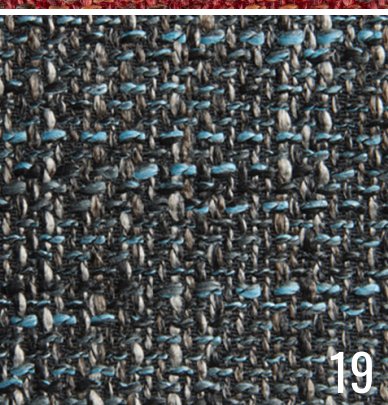
16



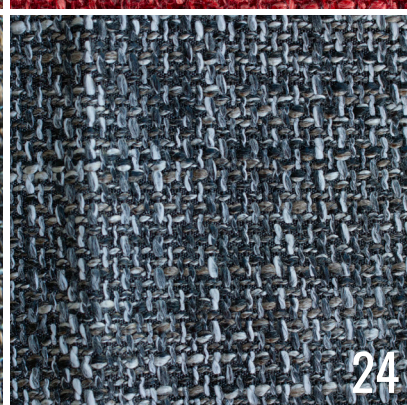
17



18



19



24

COLLECTOR

www.collectorgroup.pt

The right to discontinue and make changes is reserved.
The colors shown here are merely representative, they may suffer variations.

FAMIGLIA FABRIC

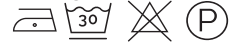
TECHNICAL DETAILS

Composition: 85%PES + 15%CO
Width: 140cm
Weight: 700 g/ml
Martindale: 30.000

Use



Washing Conditions



COLLECTOR

www.collectorgroup.pt

The right to discontinue and make changes is reserved.
The colors shown here are merely representative, they may suffer variations.

SIEGE FABRIC

TECHNICAL DETAILS

Composition: 100% CO
Width: 140cm
Weight: 560 g/m
Martindale: 40.000
Lightfastness: 4

Use



Washing Conditions



Biege



Linen



Taupe



Ivory



Pure Yellow



Hot Coral



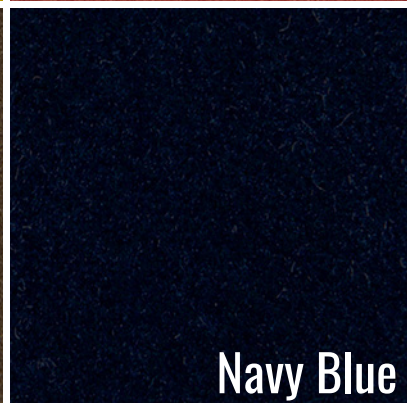
Rubi



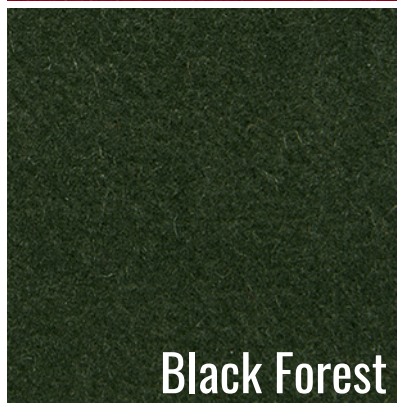
Syrah



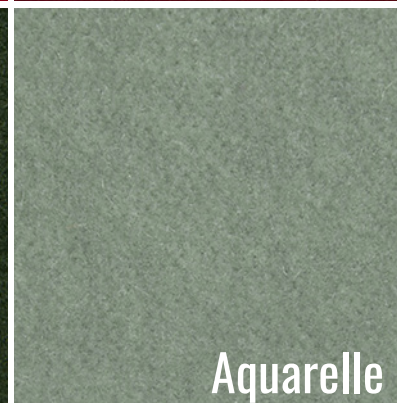
Chocolat



Navy Blue



Black Forest



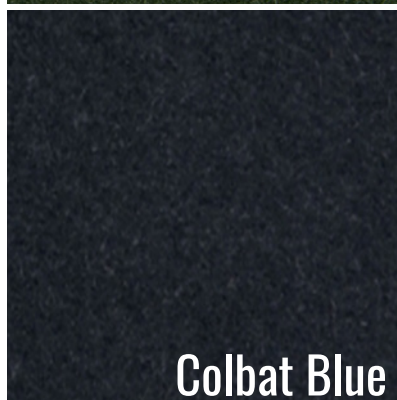
Aquarelle



Steal



Horizon Blue



Colbat Blue



Safari Green

COLLECTOR

www.collectorgroup.pt

The right to discontinue and make changes is reserved.
The colors shown here are merely representative, they may suffer variations.

TULU FABRIC

TECHNICAL DETAILS

Composition: 53.70% AC + 46.30% PL

Width: 140cm

Weight: 588 g/ml

Martindale: > 70.000

Lightfastness: 3-4

Pilling: 4-5

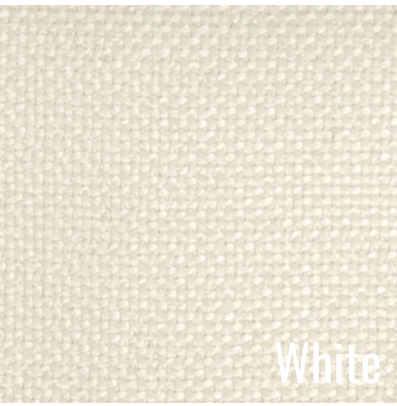
FR: Available in 2 versions BS 5852-1:1979

SOURCE 0 CIGARRET / 1 MATCH

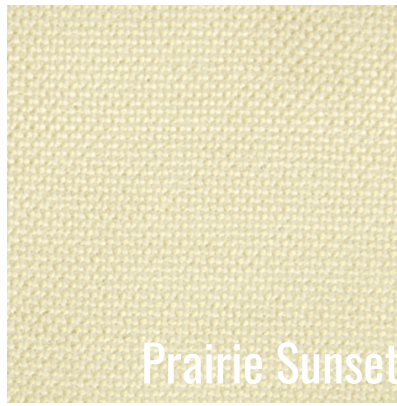
Use



Washing Conditions



White



Prairie Sunset



Timber Wolf



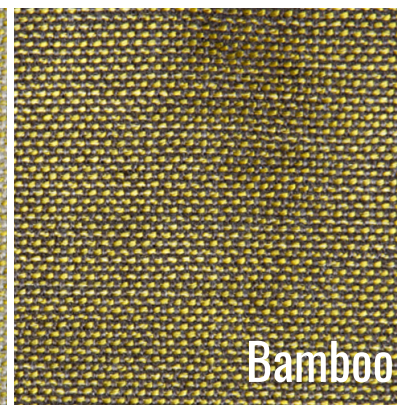
Brown



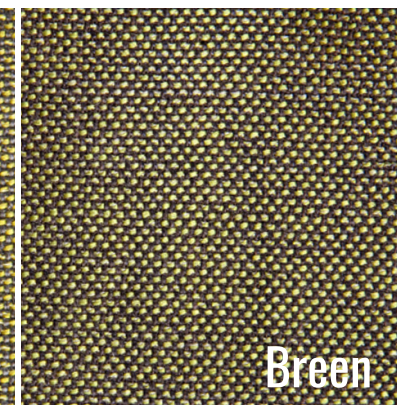
Fall Leaf



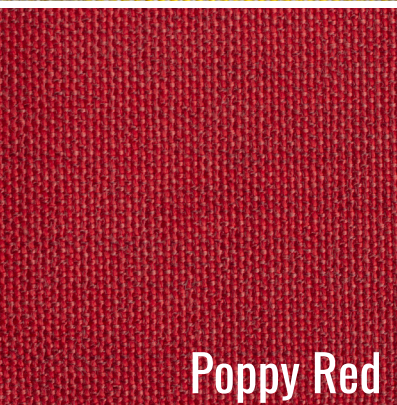
Drie Moss



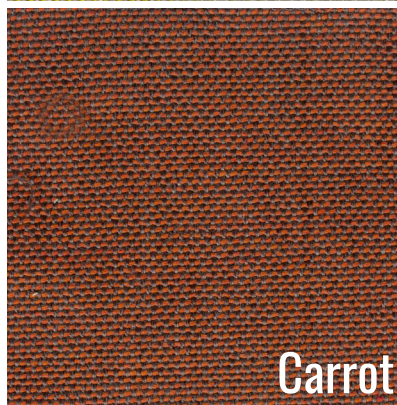
Bamboo



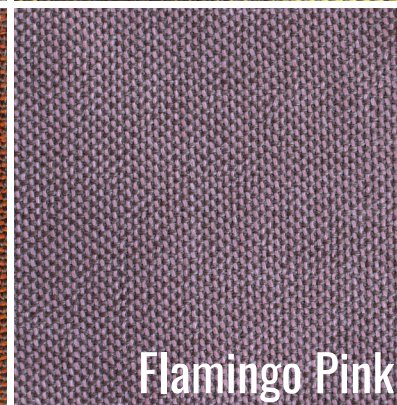
Green



Poppy Red



Carrot



Flamingo Pink



Beach Glass



Brown Viridiam



Kangaroo



Coffee Bean



Dark Brown

COLLECTOR

www.collectorgroup.pt

The right to discontinue and make changes is reserved.
The colors shown here are merely representative, they may suffer variations.

BOHO FABRIC

TECHNICAL DETAILS

Composition: 84% PL + 16% AC

Width: 140cm

Weight: 900 g/ml

Martindale: > 45.000 CC

Use



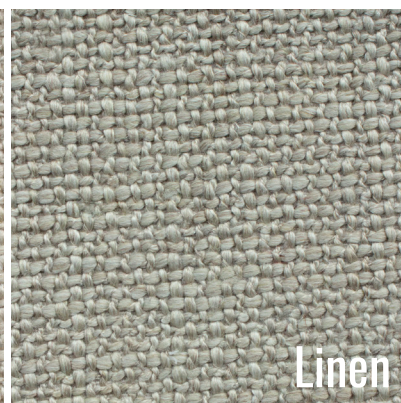
Washing Conditions



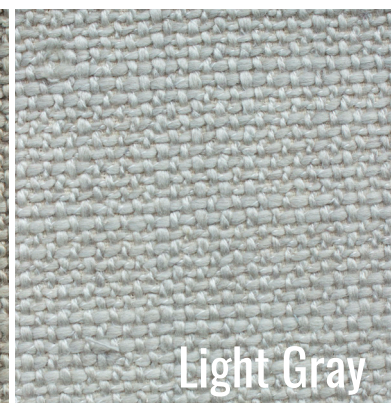
Creamy



Natural Raffia



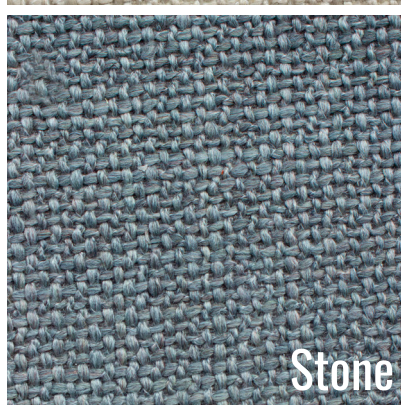
Linen



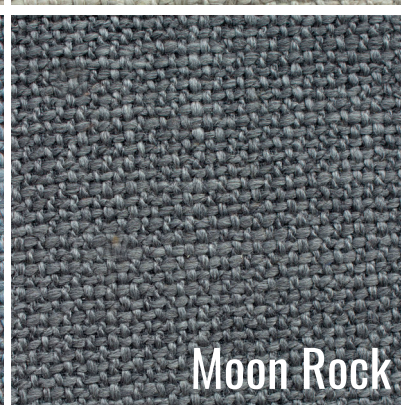
Light Gray



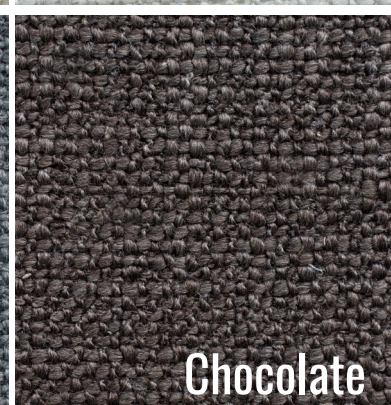
Warm Gray



Stone



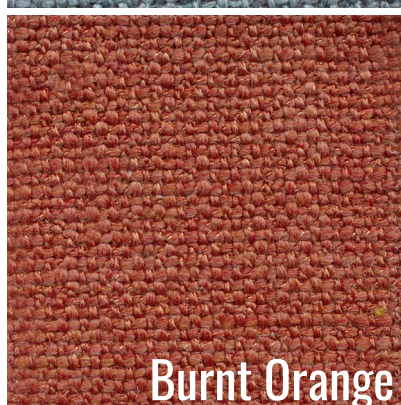
Moon Rock



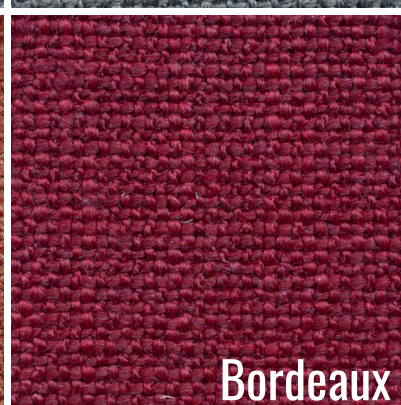
Chocolate



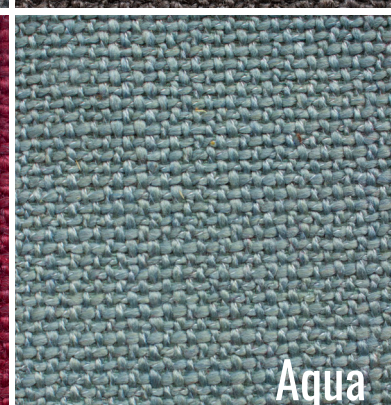
Golden Ocre



Burnt Orange



Bordeaux



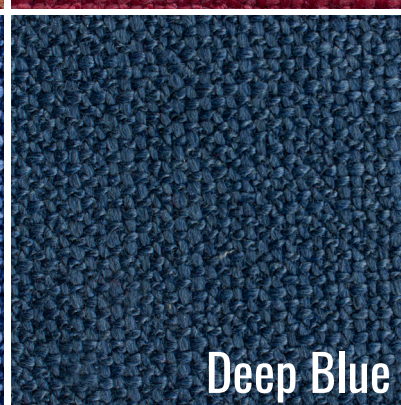
Aqua



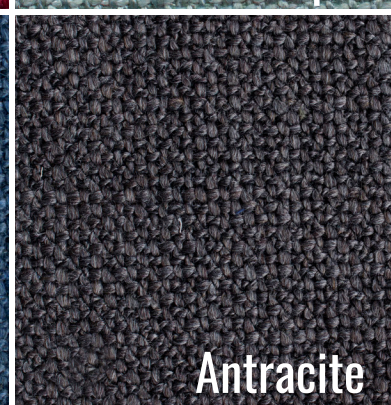
Artic Blue



Cobalt blue



Deep Blue



Antracite

COLLECTOR

www.collectorgroup.pt

The right to discontinue and make changes is reserved.
The colors shown here are merely representative, they may suffer variations.

ZUMIREZ

FABRIC *PREMIUM*

TECHNICAL DETAILS

Composition: 68% WO 19% CO 13% PL

Width: 136cm

RUB TEST: 40.000

Type: Textured Weave

Use



Washing Conditions



Moonbeam



Umber



Tabacco

BOUCLE

FABRIC *PREMIUM*

TECHNICAL DETAILS

Composition: 96%PI 4%A

Width: 140cm

Weight: 680gr/m

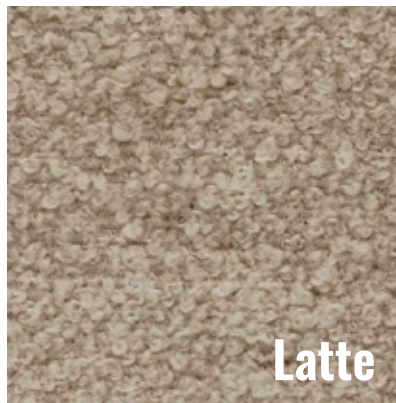
Use



Washing Conditions



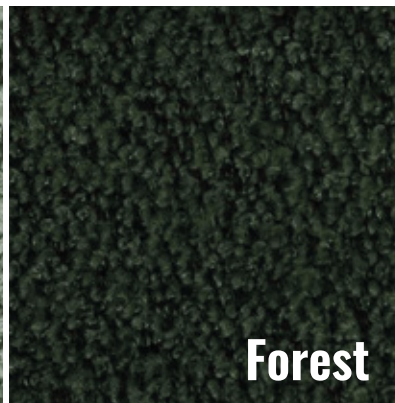
White



Latte



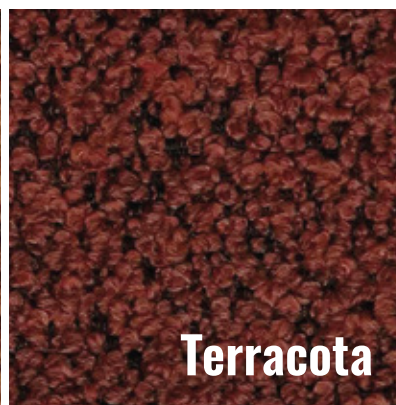
Celadon



Forest



Gold



Terracota