

# CASSETTE CHAIR



# CASSETTE CHAIR

W 70 cm | 27"  
D 66 cm | 26"  
H 62 cm | 24"  
SH 42.5cm | 16"

## PRODUCT FEATURES

Solid oak wood structure.  
Upholstered in velvet fabric.

## PRODUCT OPTIONS

### WOOD FINISHES:

Available in all COLLECTOR woods swatches.  
Available to be lacquered in one of Collectors RAL Colors

### UPHOLSTERY:

Available in all COLLECTOR leathers and fabrics.  
Available in client's own material.

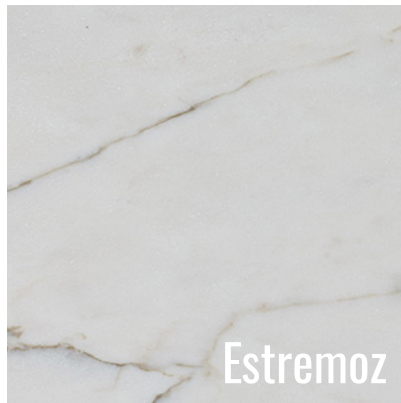
# MARBLES



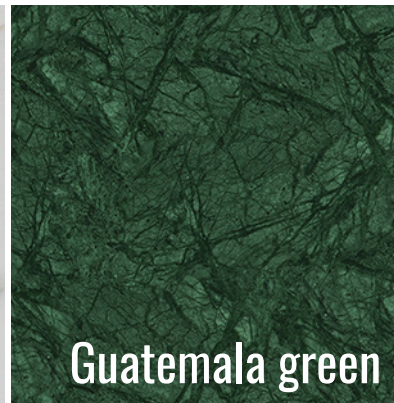
Emperador dark



Emperador light



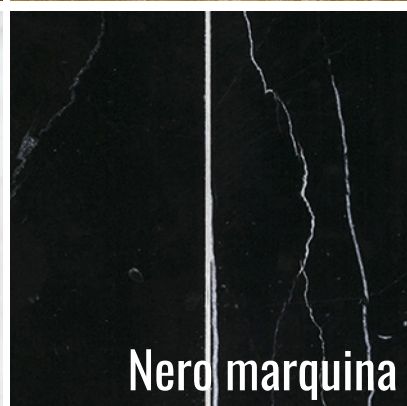
Estremoz



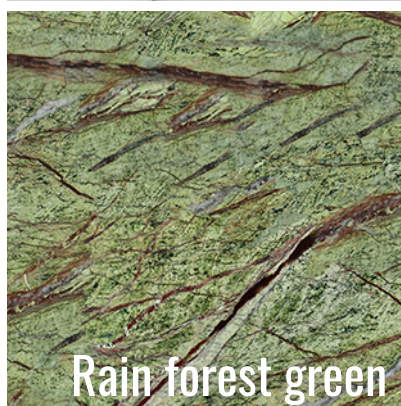
Guatemala green



Marble carrara



Nero marquina



Rain forest green



Travertino

# WOOD



Oak



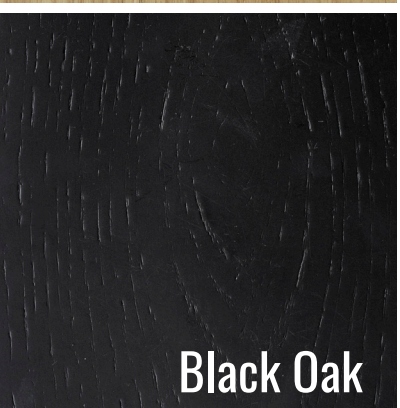
Walnut



Dark Oak



Smoked Oak



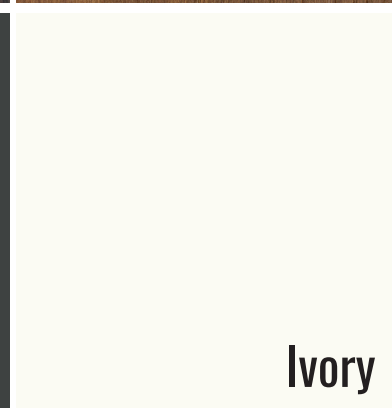
Black Oak



Kaki



Black



Ivory

# BETREND FABRIC

## TECHNICAL DETAILS

**Composition:** 53.3% AC + 46.7% PL

**Width:** 140cm

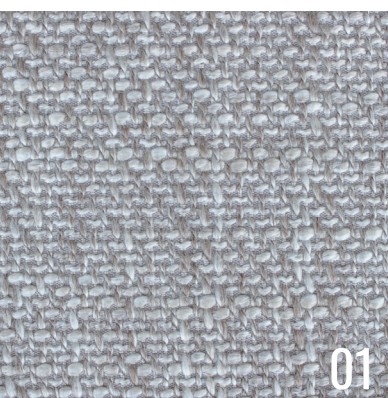
**Weight:** 653,8 g/m

**Martindale:** >50.000

Use



Washing Conditions



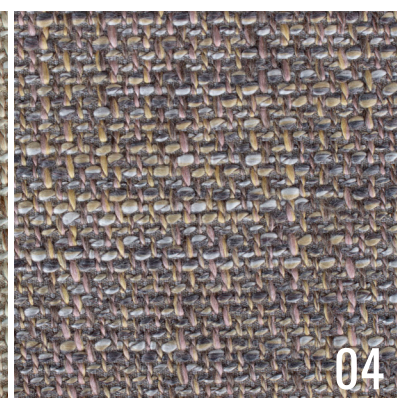
01



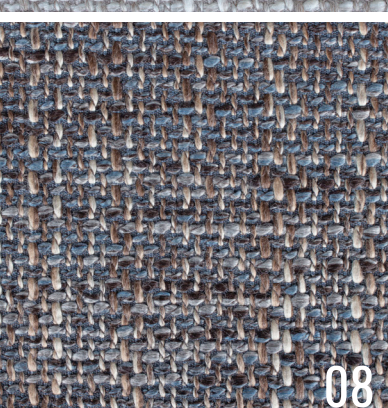
02



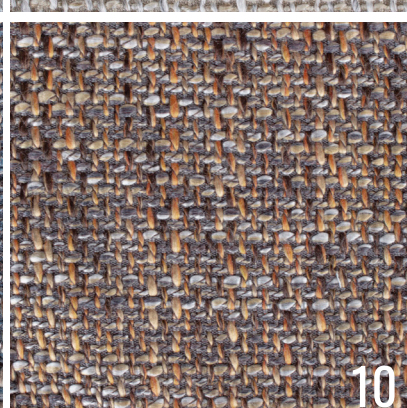
03



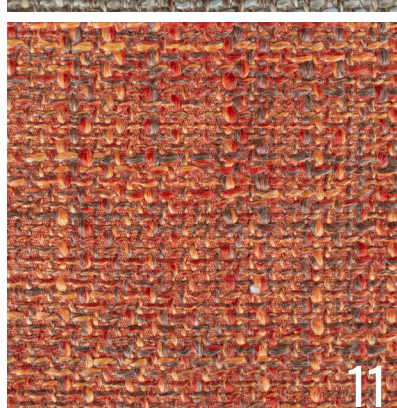
04



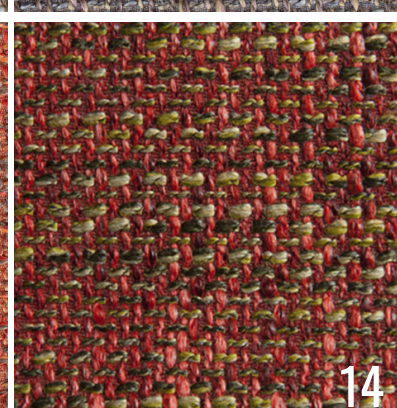
08



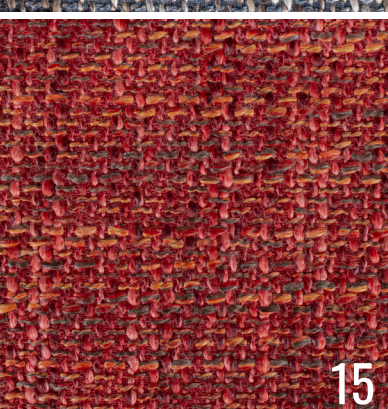
10



11



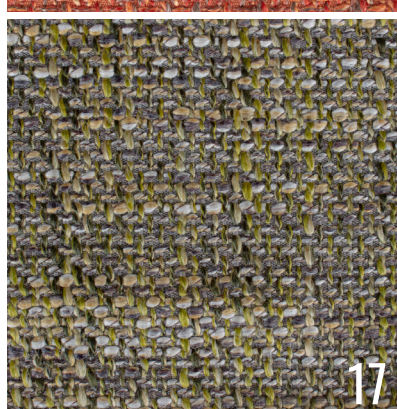
14



15



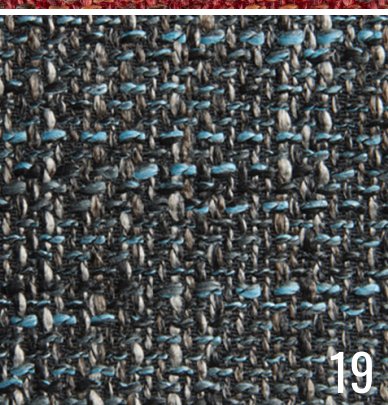
16



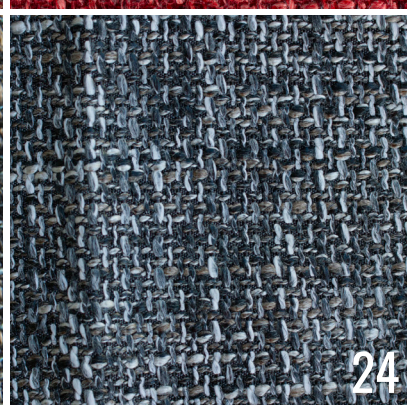
17



18



19



24

# COLLECTOR

[www.collectorgroup.pt](http://www.collectorgroup.pt)

The right to discontinue and make changes is reserved.  
The colors shown here are merely representative, they may suffer variations.

# FAMIGLIA FABRIC

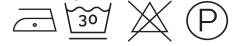
## TECHNICAL DETAILS

**Composition:** 85%PES + 15%CO  
**Width:** 140cm  
**Weight:** 700 g/ml  
**Martindale:** 30.000

Use



Washing Conditions



COLLECTOR

[www.collectorgroup.pt](http://www.collectorgroup.pt)

The right to discontinue and make changes is reserved.  
The colors shown here are merely representative, they may suffer variations.

# SIEGE FABRIC

## TECHNICAL DETAILS

**Composition:** 100% CO  
**Width:** 140cm  
**Weight:** 560 g/m  
**Martindale:** 40.000  
**Lightfastness:** 4

Use



Washing Conditions



Biege



Linen



Taupe



Ivory



Pure Yellow



Hot Coral



Rubi



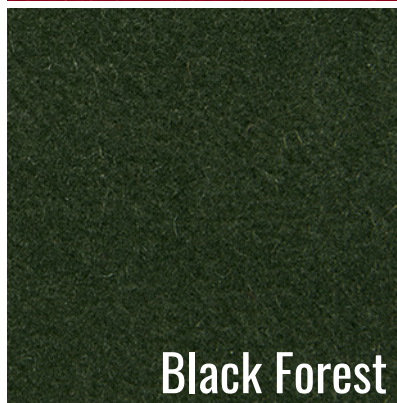
Syrah



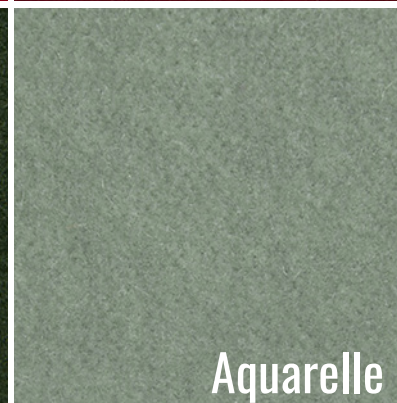
Chocolat



Navy Blue



Black Forest



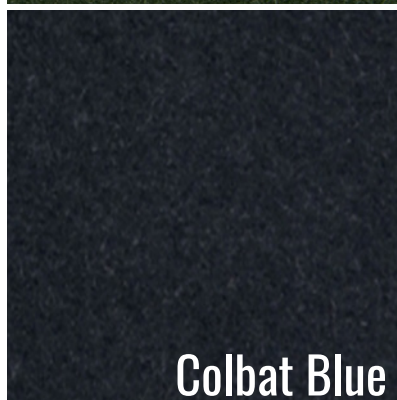
Aquarelle



Steal



Horizon Blue



Colbat Blue



Safari Green

COLLECTOR

[www.collectorgroup.pt](http://www.collectorgroup.pt)

The right to discontinue and make changes is reserved.  
The colors shown here are merely representative, they may suffer variations.

# TULU FABRIC

## TECHNICAL DETAILS

**Composition:** 53.70% AC + 46.30% PL

**Width:** 140cm

**Weight:** 588 g/ml

**Martindale:** > 70.000

**Lightfastness:** 3-4

**Pilling:** 4-5

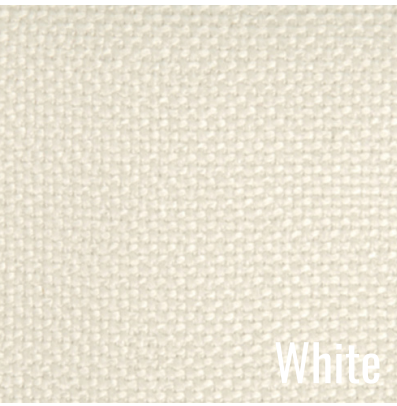
**FR:** Available in 2 versions BS 5852-1:1979

SOURCE 0 CIGARRET / 1 MATCH

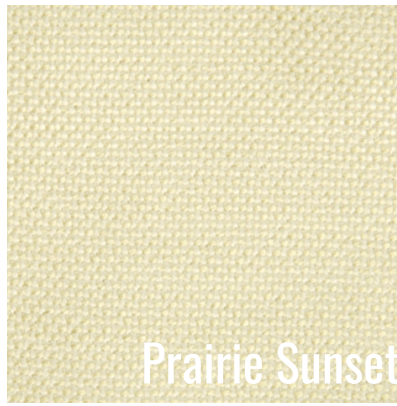
Use



Washing Conditions



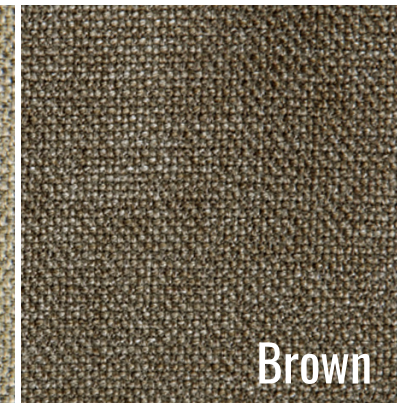
White



Prairie Sunset



Timber Wolf



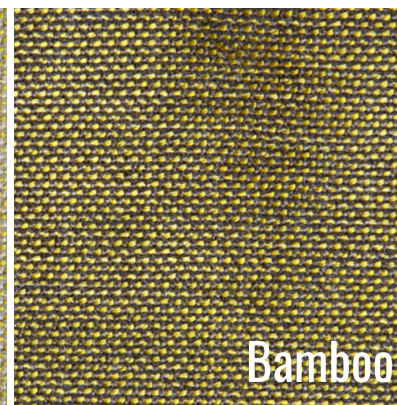
Brown



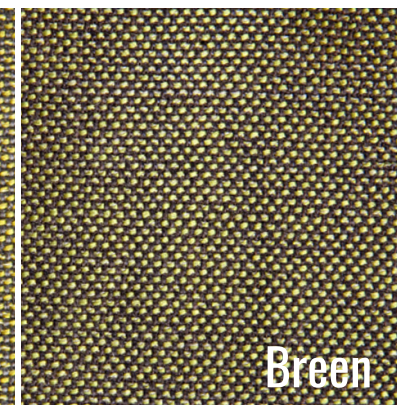
Fall Leaf



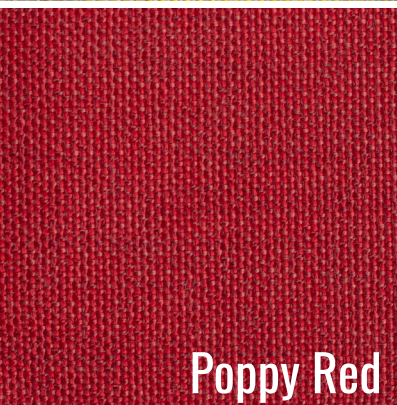
Drie Moss



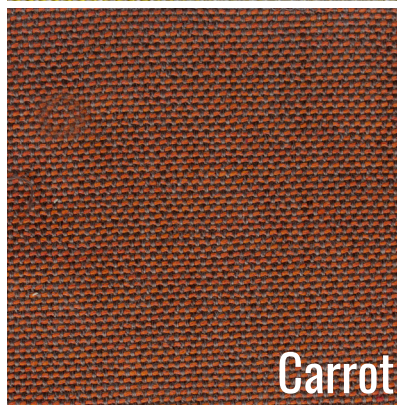
Bamboo



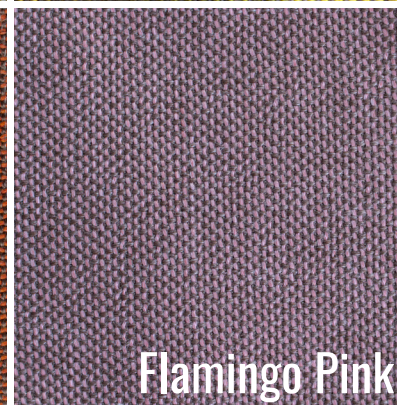
Green



Poppy Red



Carrot



Flamingo Pink



Beach Glass



Brown Viridiam



Kangaroo



Coffee Bean



Dark Brown

COLLECTOR

[www.collectorgroup.pt](http://www.collectorgroup.pt)

The right to discontinue and make changes is reserved.  
The colors shown here are merely representative, they may suffer variations.



# BOHO FABRIC

## TECHNICAL DETAILS

**Composition:** 84% PL + 16% AC

**Width:** 140cm

**Weight:** 900 g/ml

**Martindale:** > 45.000 CC

Use



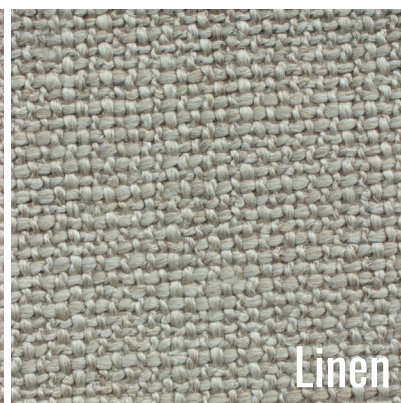
Washing Conditions



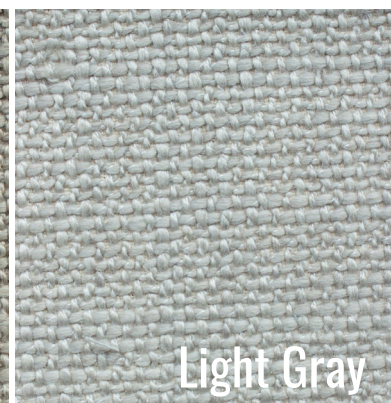
Creamy



Natural Raffia



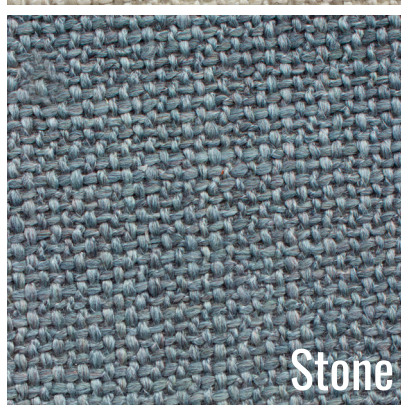
Linen



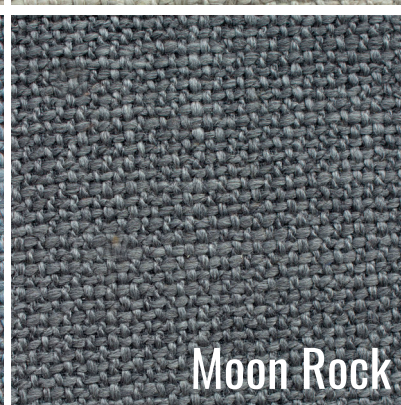
Light Gray



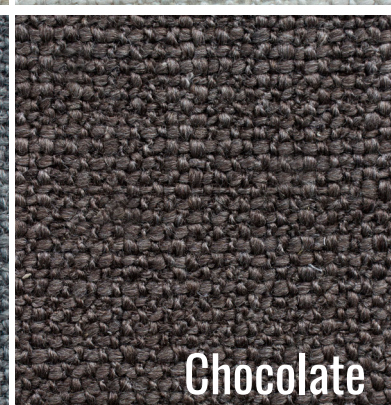
Warm Gray



Stone



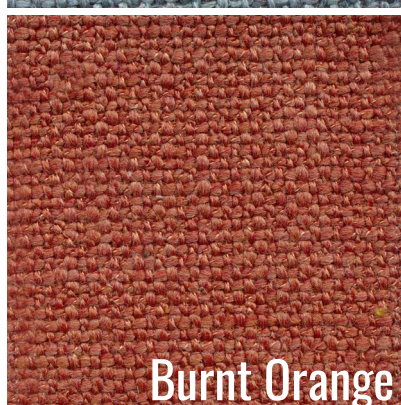
Moon Rock



Chocolate



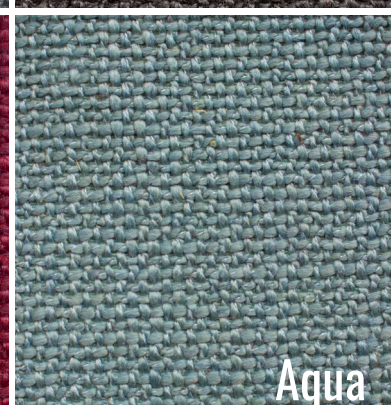
Golden Ocre



Burnt Orange



Bordeaux



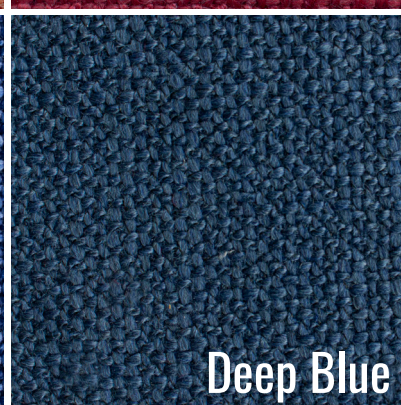
Aqua



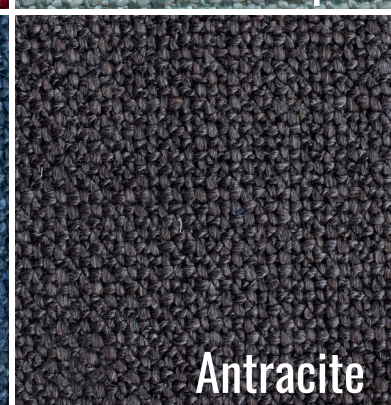
Artic Blue



Cobalt blue



Deep Blue



Antracite

## COLLECTOR

[www.collectorgroup.pt](http://www.collectorgroup.pt)

The right to discontinue and make changes is reserved.  
The colors shown here are merely representative, they may suffer variations.

# ZUMIREZ

## FABRIC *PREMIUM*

### TECHNICAL DETAILS

**Composition:** 68% WO 19% CO 13% PL

**Width:** 136cm

**RUB TEST:** 40.000

**Type:** Textured Weave

#### Use



#### Washing Conditions



**Moonbeam**



**Umber**



**Tabacco**

# BOUCLE

## FABRIC *PREMIUM*

### TECHNICAL DETAILS

**Composition:** 96%PI 4%A

**Width:** 140cm

**Weight:** 680gr/m

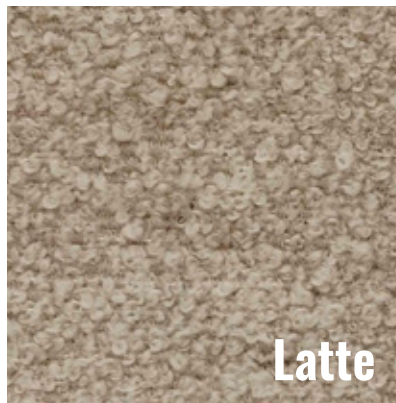
Use



Washing Conditions



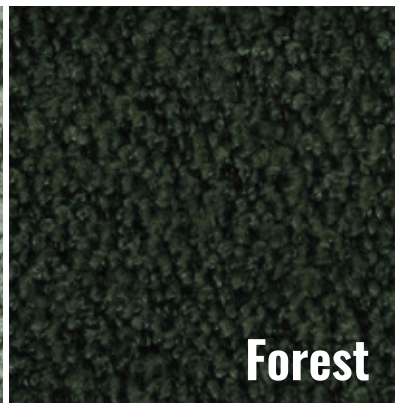
White



Latte



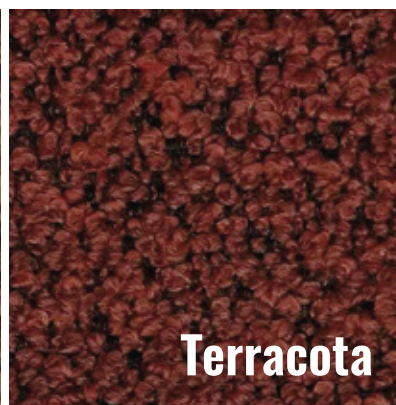
Celadon



Forest



Gold



Terracota