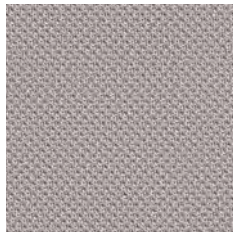


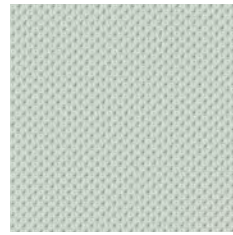
Atlantic 60061



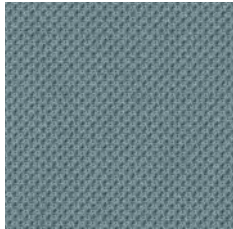
Atlantic 60063



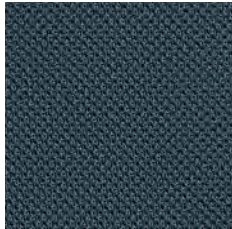
Atlantic 60141



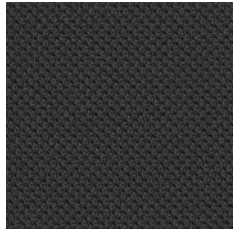
Atlantic 60095



Atlantic 60334



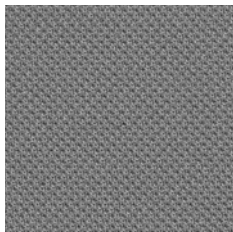
Atlantic 60143



Atlantic 60025



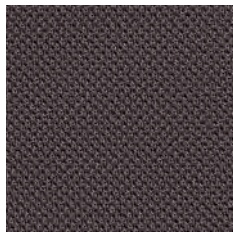
Atlantic 60999



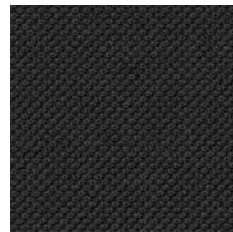
Atlantic 60011



Atlantic 61163



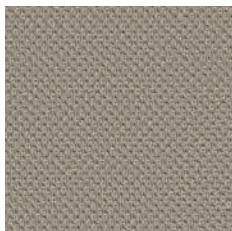
Atlantic 60142



Atlantic 60333



Atlantic 61128



Atlantic 61078



Atlantic 61166



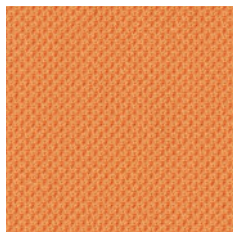
Atlantic 61110



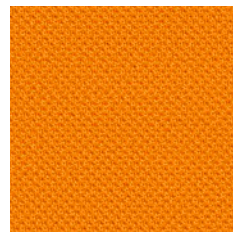
Atlantic 61271



Atlantic 61165

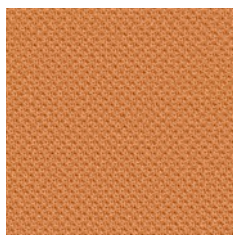


Atlantic 63127

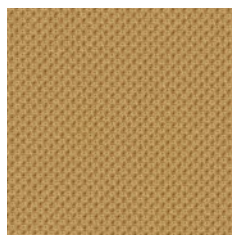


Atlantic 63055

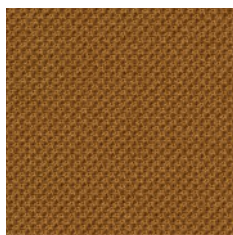
(1) Low Hazard, (2) Medium Hazard



Atlantic 63033



Atlantic 61270



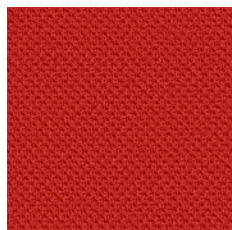
Atlantic 61272



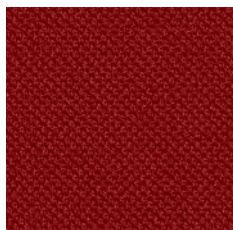
Atlantic 63034



Atlantic 63057



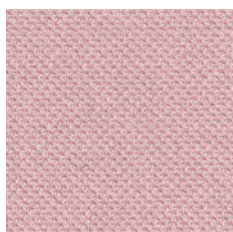
Atlantic 64093



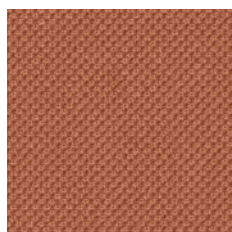
Atlantic 64105



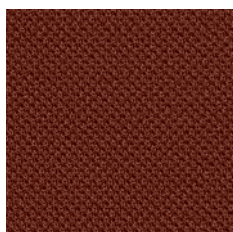
Atlantic 64089



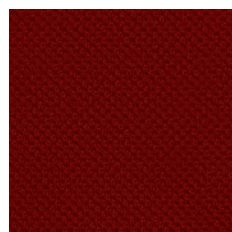
Atlantic 64117



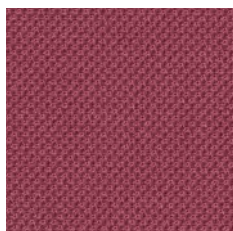
Atlantic 61269



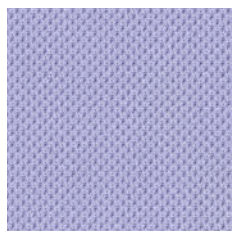
Atlantic 61164



Atlantic 64092



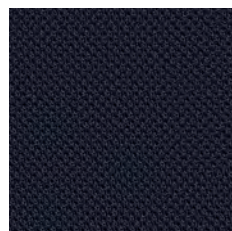
Atlantic 64255



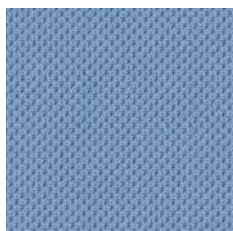
Atlantic 65142



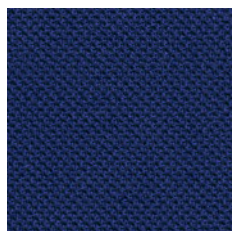
Atlantic 65037



Atlantic 66064



Atlantic 66095



Atlantic 66041

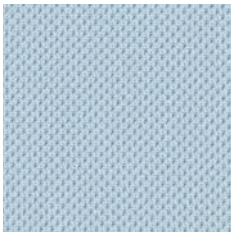


Atlantic 66125

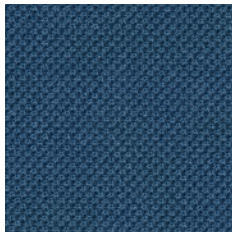


Atlantic 66062

(1) Low Hazard, (2) Medium Hazard



Atlantic 66249



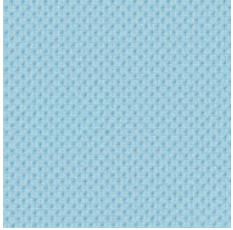
Atlantic 66140



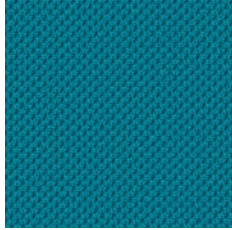
Atlantic 66123



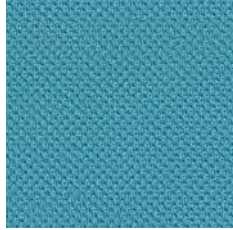
Atlantic 66057



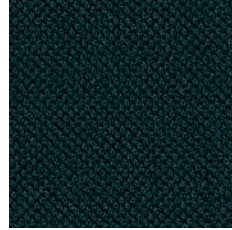
Atlantic 66250



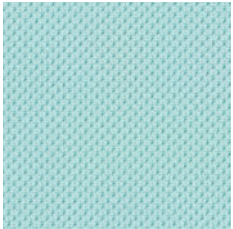
Atlantic 66086



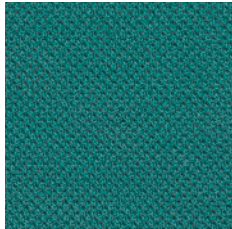
Atlantic 66063



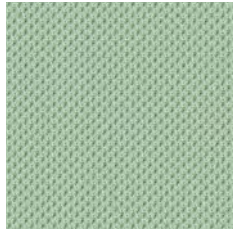
Atlantic 67043



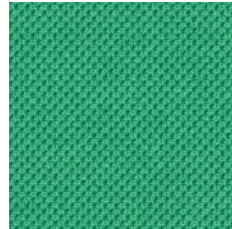
Atlantic 67128



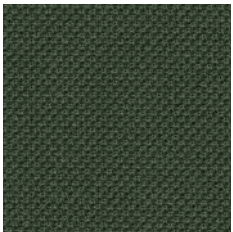
Atlantic 67030



Atlantic 68275



Atlantic 68276



Atlantic 68277



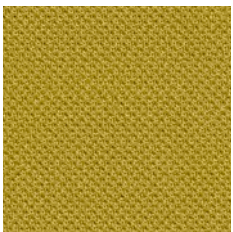
Atlantic 68274



Atlantic 68054



Atlantic 68110

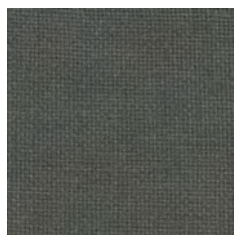


Atlantic 62048

(1) Low Hazard, (2) Medium Hazard



Beacon



Hideaway



Confine



Craven



Redoubt



Fortress



Drawbridge



Ralstone



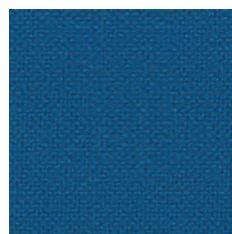
Bingham



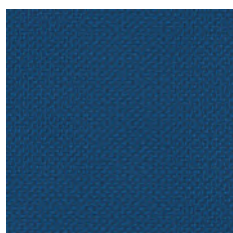
Redstone



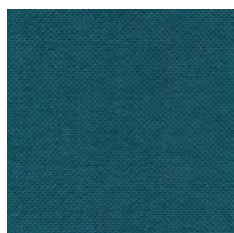
Augusta



Stillwater



Hamilton

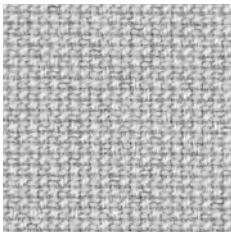


Abide



Resistance

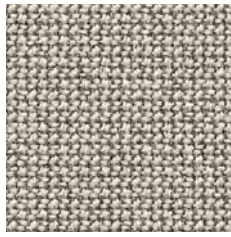
(1) Low Hazard, (2) Medium Hazard



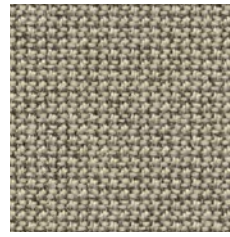
Cura 60000



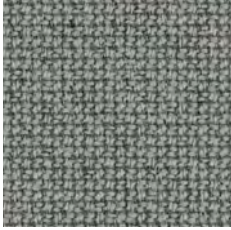
Cura 61232



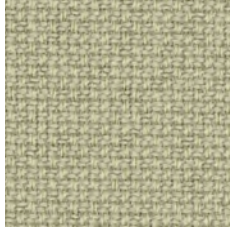
Cura 60112



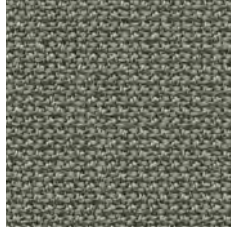
Cura 61168



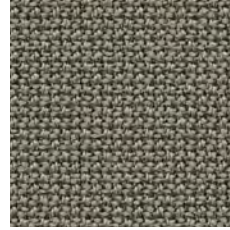
Cura 60327



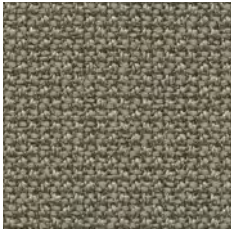
Cura 62125



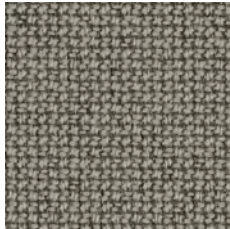
Cura 60109



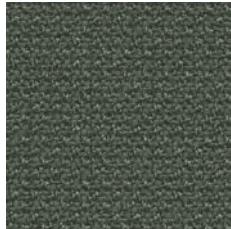
Cura 60110



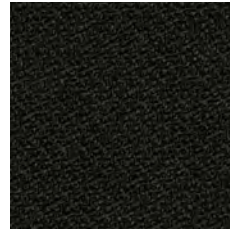
Cura 61169



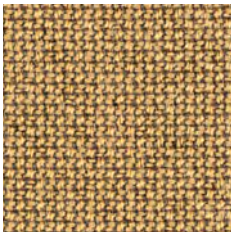
Cura 61259



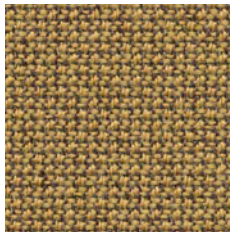
Cura 60019



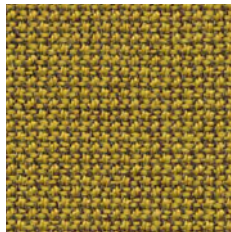
Cura 60999



Cura 61233



Cura 62083



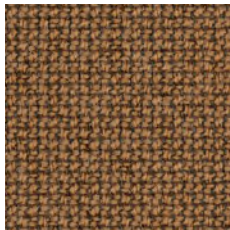
Cura 62084



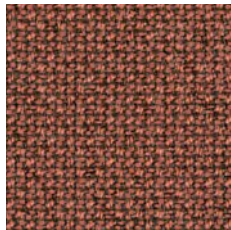
Cura 62082



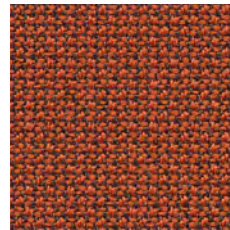
Cura 62126



Cura 61260

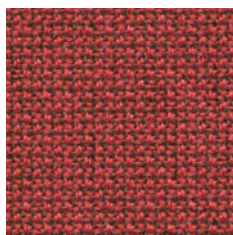


Cura 61257

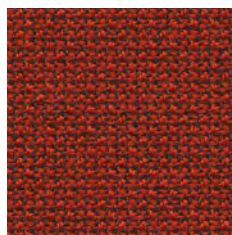


Cura 63078

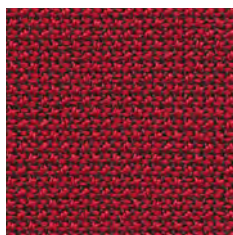
(1) Low Hazard, (2) Medium Hazard



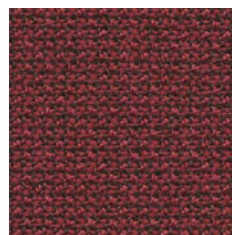
Cura 64197



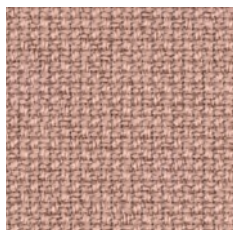
Cura 63012



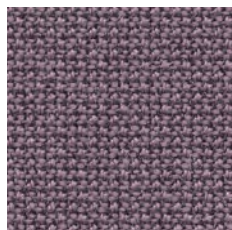
Cura 64013



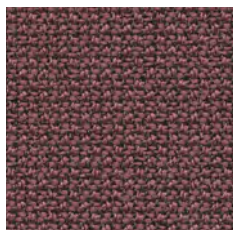
Cura 64196



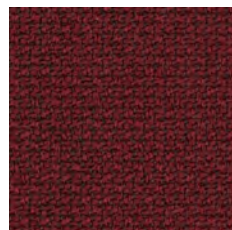
Cura 64240



Cura 64194



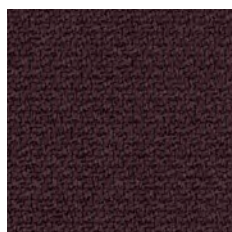
Cura 64195



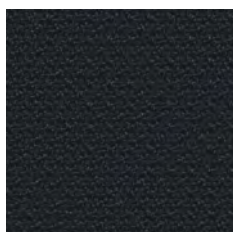
Cura 64252



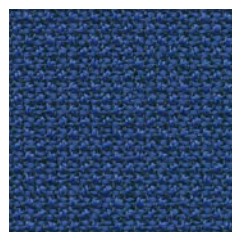
Cura 61258



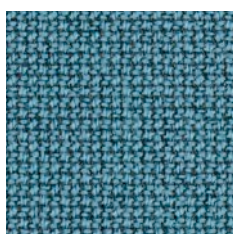
Cura 65137



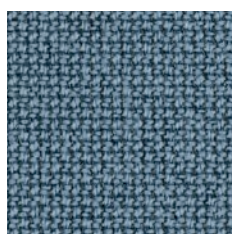
Cura 60111



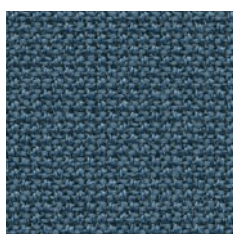
Cura 65105



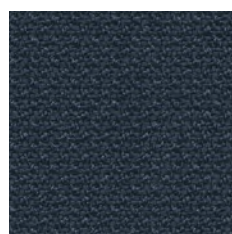
Cura 66240



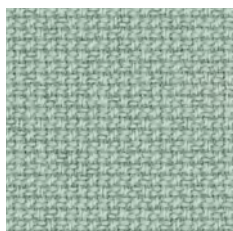
Cura 66239



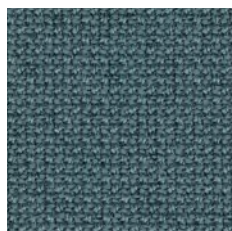
Cura 66167



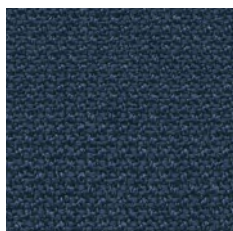
Cura 66165



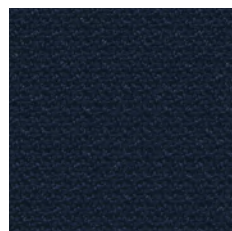
Cura 68262



Cura 68187



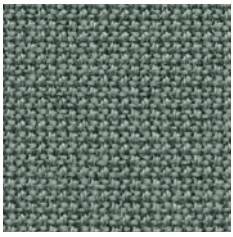
Cura 66170



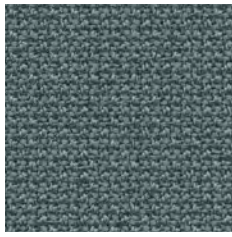
Cura 66169

(1) Low Hazard, (2) Medium Hazard

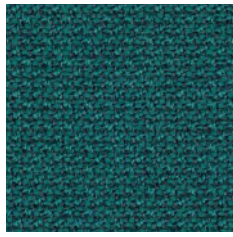
GABRIEL CURA (1)



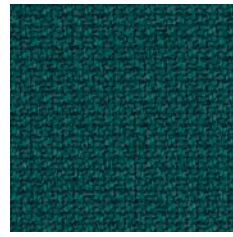
Cura 68186



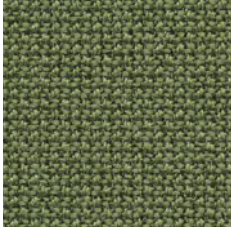
Cura 66166



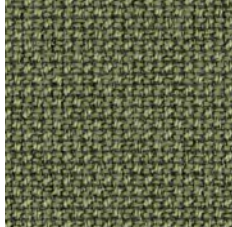
Cura 67084



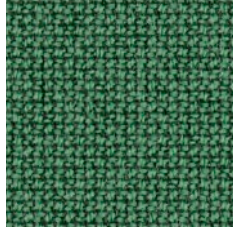
Cura 68264



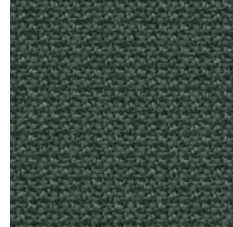
Cura 68181



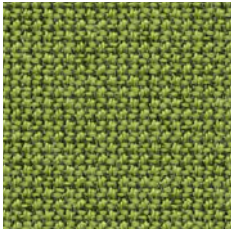
Cura 68261



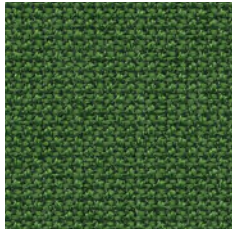
Cura 68263



Cura 68182



Cura 68180



Cura 68183

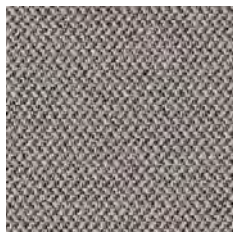
CAMIRA ERA (1)



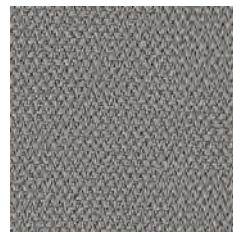
Quota



Futurist

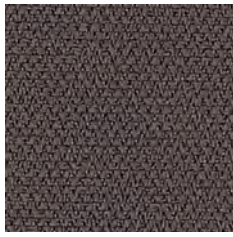


Generation



Forecast

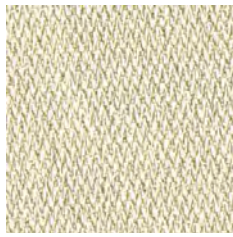
(1) Low Hazard, (2) Medium Hazard



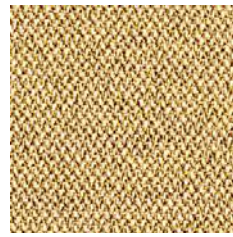
History



Present

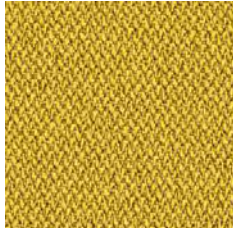


Transition

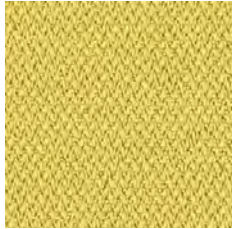


Splitsecond

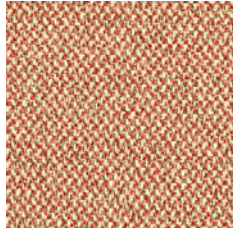
FAST TRACK



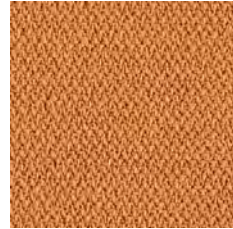
Occasion



Lifetime



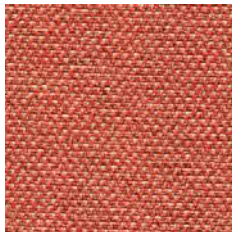
Sequence



Measure



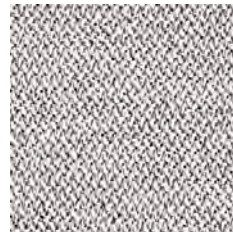
Span



Turn

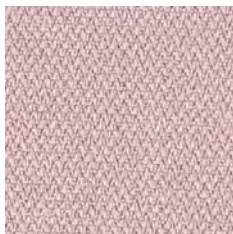


Experience



Memo

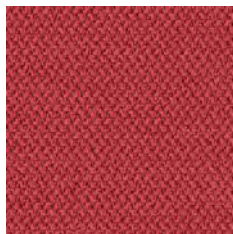
FAST TRACK



Calendar



Phase

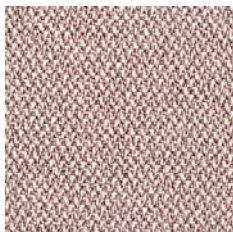


Cycle

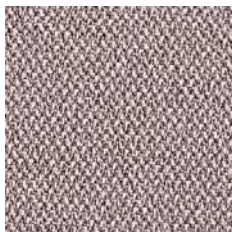


Extent

FAST TRACK



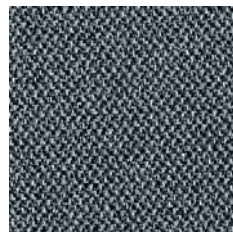
Date



Occurrence



Prime

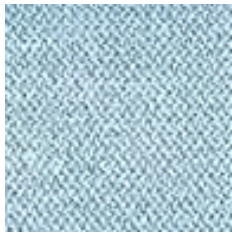


Elapse

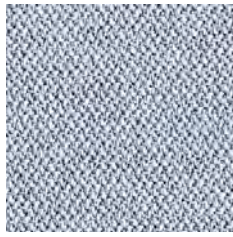
(1) Low Hazard, (2) Medium Hazard



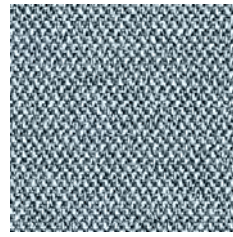
Forward



Allowance



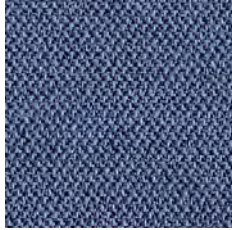
Youth



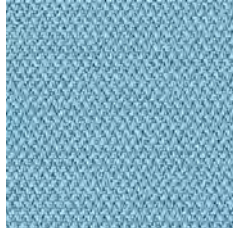
Late



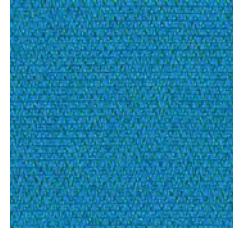
Maturity



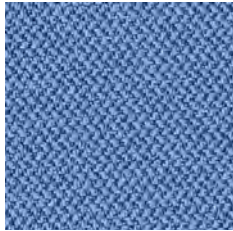
Range



Aeon



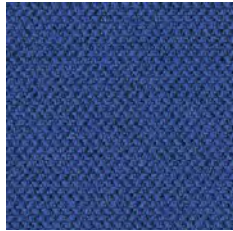
Everlasting



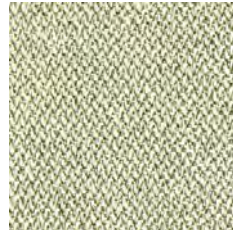
Chapter



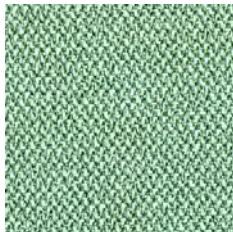
Stage



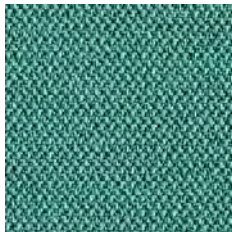
Perennial



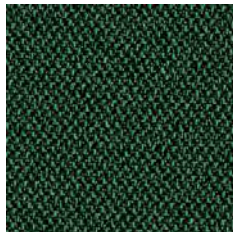
Analogue



Notation



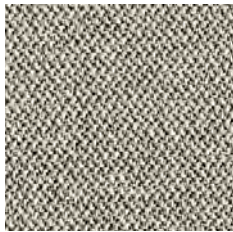
Rest



Signature

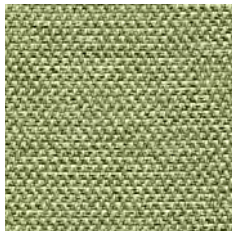


Event

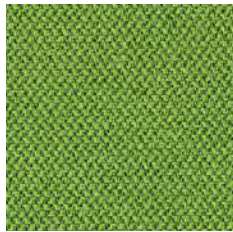


Prompt

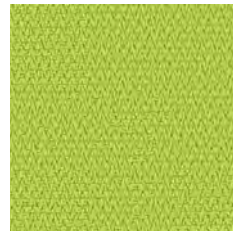
FAST TRACK



Endurance



Timelapse



Period

(1) Low Hazard, (2) Medium Hazard



Felicity 60105



Felicity 60106



Felicity 60107



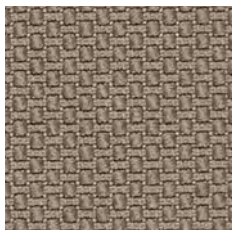
Felicity 60108



Felicity 60999



Felicity 61163



Felicity 61164

FASTTRACK



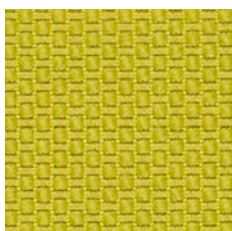
Felicity 61165



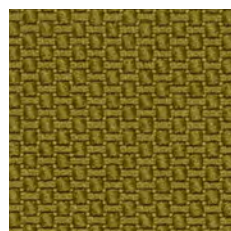
Felicity 61166



Felicity 61167



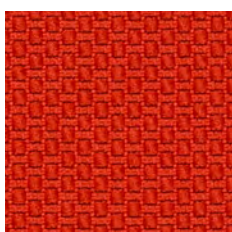
Felicity 62080



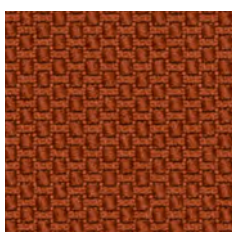
Felicity 62081



Felicity 63087



Felicity 63088

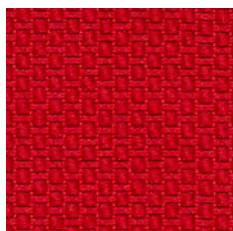


Felicity 63089

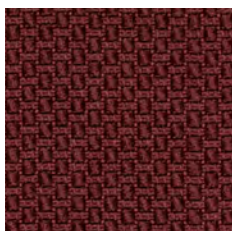
FASTTRACK



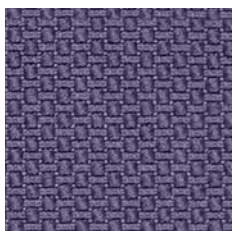
Felicity 64189



Felicity 64190



Felicity 64191



Felicity 65102



Felicity 65103

(1) Low Hazard, (2) Medium Hazard

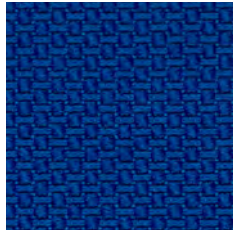
GABRIEL FELICITY (1)



Felicity 66161



Felicity 66162



Felicity 66163



Felicity 66164

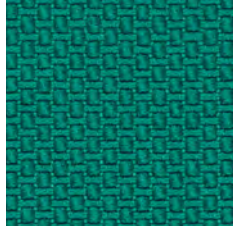


Felicity 67079

FASTTRACK



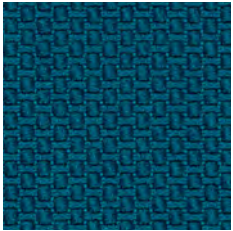
Felicity 67080



Felicity 67081



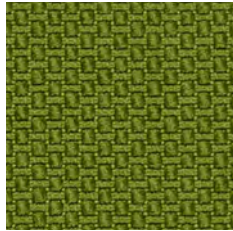
Felicity 67082



Felicity 67083

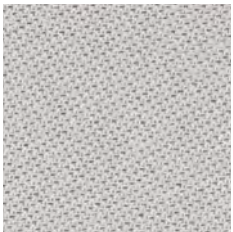


Felicity 68178

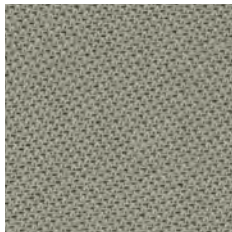


Felicity 68179

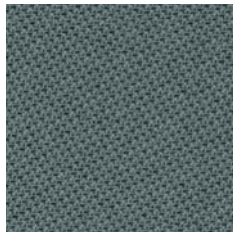
GABRIEL TONAL (1)



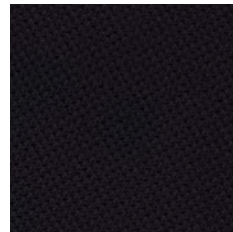
Tonal 60122



Tonal 60123



Tonal 60124

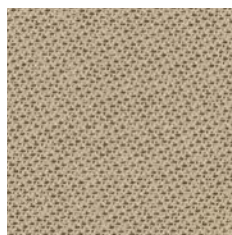


Tonal 60999

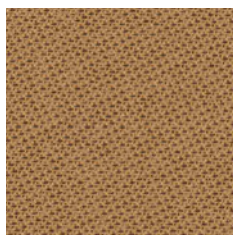
(1) Low Hazard, (2) Medium Hazard



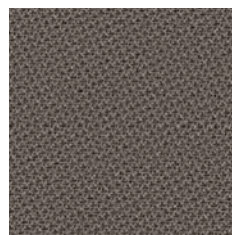
Tonal 61179



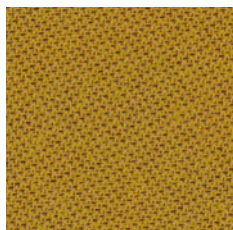
Tonal 61180



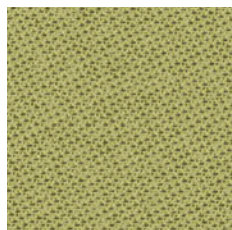
Tonal 61181



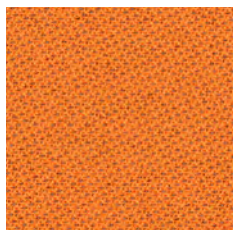
Tonal 61182



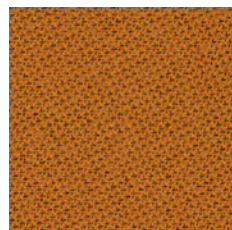
Tonal 62057



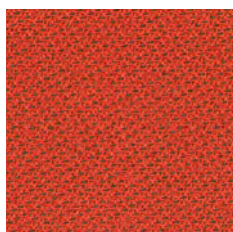
Tonal 62092



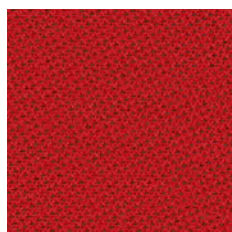
Tonal 63097



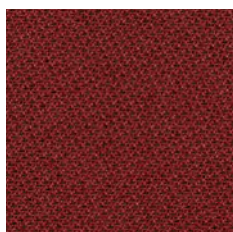
Tonal 63098



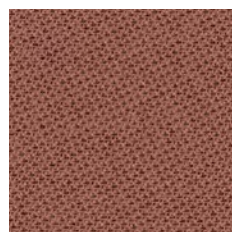
Tonal 64207



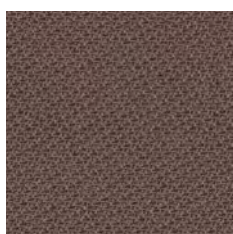
Tonal 64208



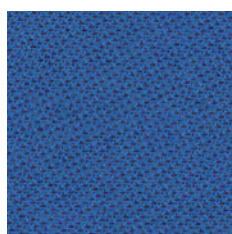
Tonal 64209



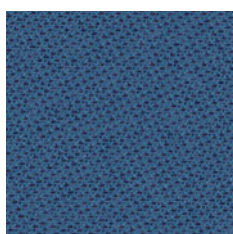
Tonal 64210



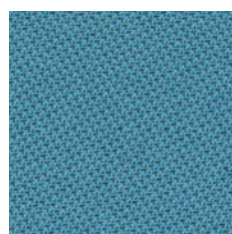
Tonal 64211



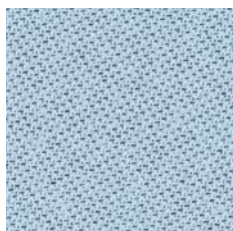
Tonal 66181



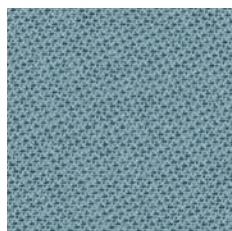
Tonal 66182



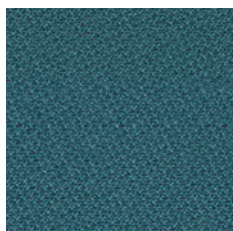
Tonal 66183



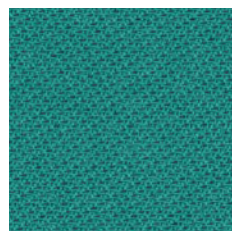
Tonal 66184



Tonal 66185



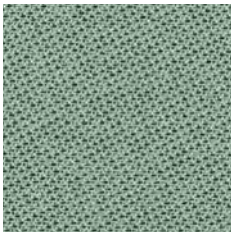
Tonal 66186



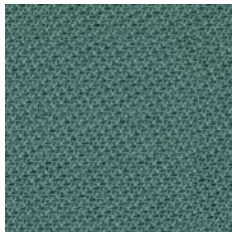
Tonal 67088

(1) Low Hazard, (2) Medium Hazard

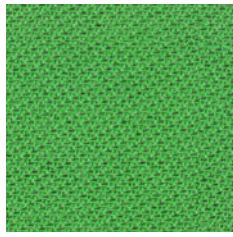
GABRIEL TONAL (1)



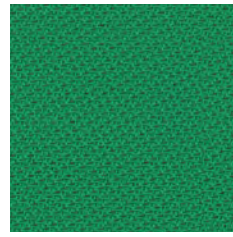
Tonal 67089



Tonal 67090



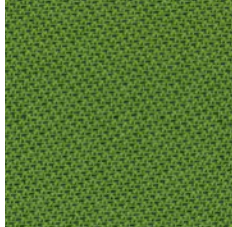
Tonal 68204



Tonal 68205

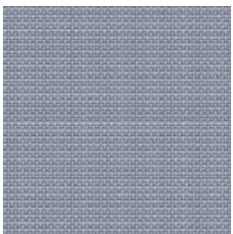


Tonal 68206

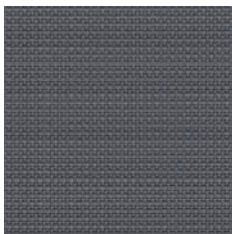


Tonal 68207

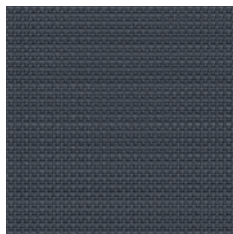
CAMIRA URBAN (2)



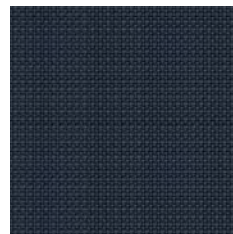
Sidewalk



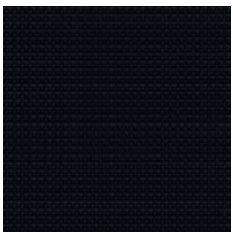
Curb



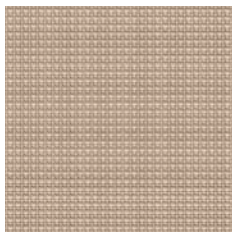
Square



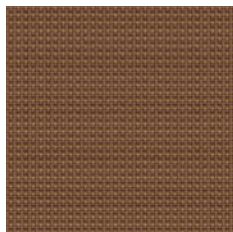
Junction



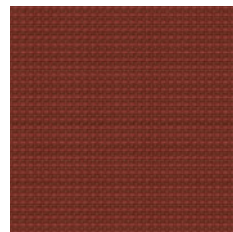
Subway



Living

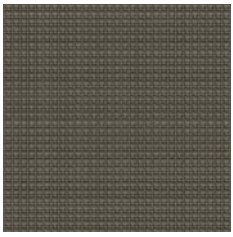


Bench

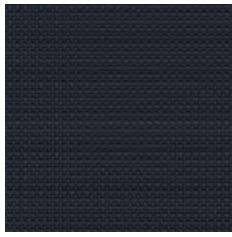


Precinct

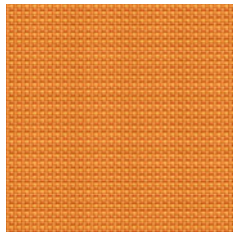
(1) Low Hazard, (2) Medium Hazard



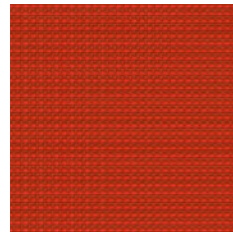
District



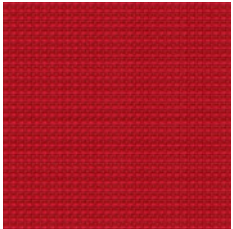
Underground



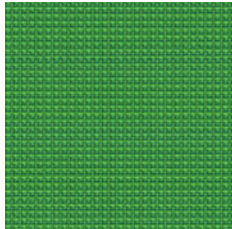
Avenue



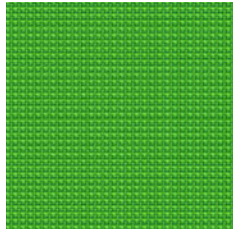
Highrise



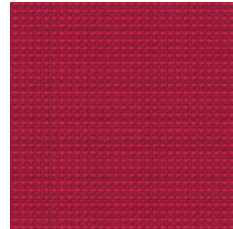
Congestion



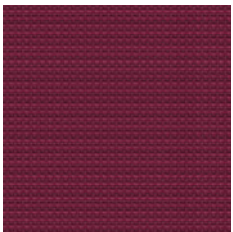
Suburbia



Uptown



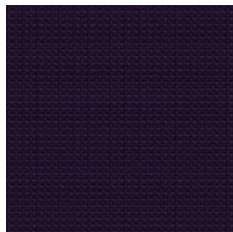
Cosmopolitan



Freeway



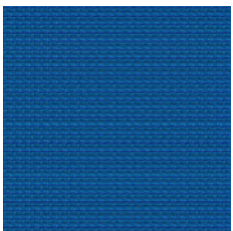
Graffiti



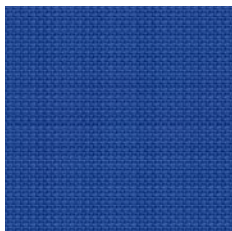
Intersection



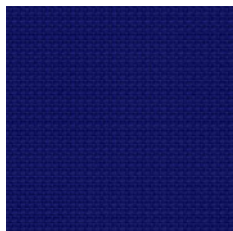
Nightowl



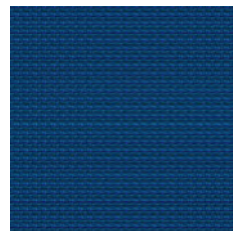
Penthouse



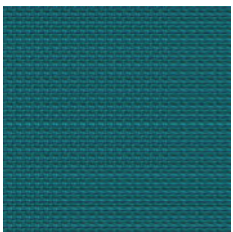
Ringroad



Streetsmart

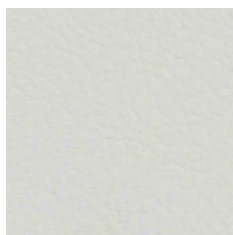


Conurbation



Boulevard

(1) Low Hazard, (2) Medium Hazard



Pure white 9607



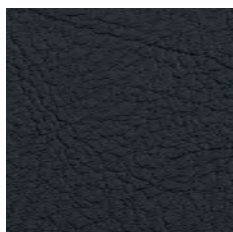
Silver 4020



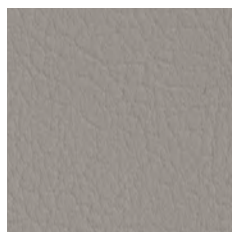
Perle 4045



Petrol 5065



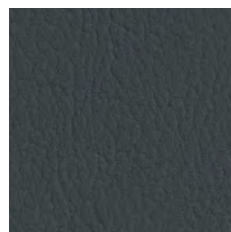
Night 2108



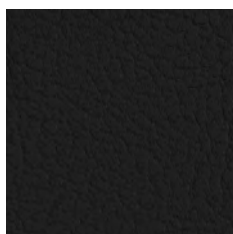
Auster 4040



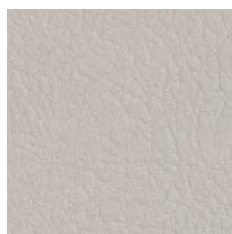
Lichtgrau 4052



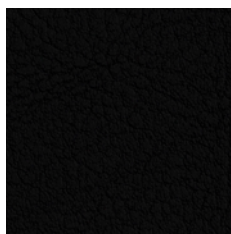
Platin 4043



Graphite 4003



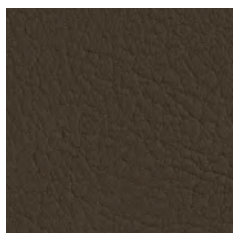
Pearlescence 8020



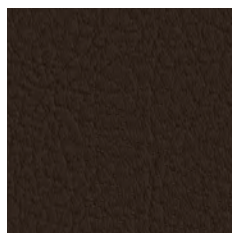
Schwarz 9035



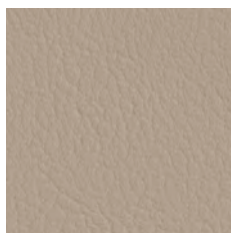
Laurel 4002



Moss 5002



Meteor 4041



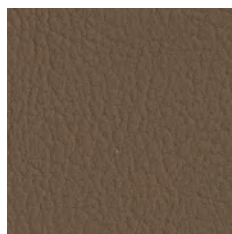
Sisal 1048



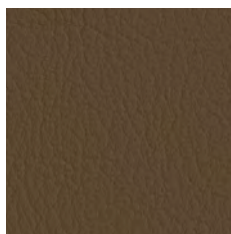
Mocca 0020



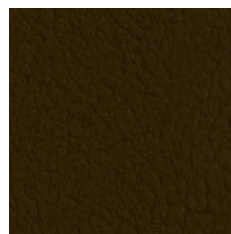
Leinen 1049



Taupe 0034

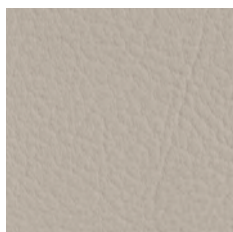


Mushroom 4001



Bronze 6002

(1) Low Hazard, (2) Medium Hazard



Weiss 8032



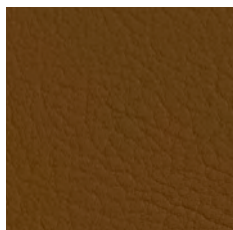
Ivory 1020



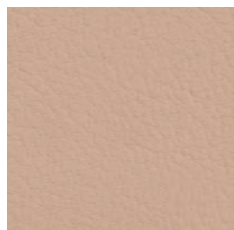
Gold 6020



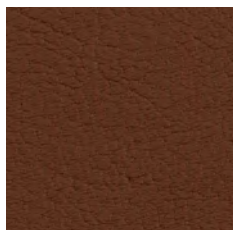
Beige 1050



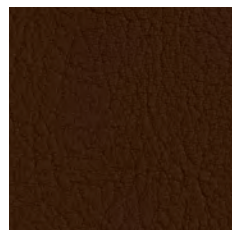
Cognac 0002



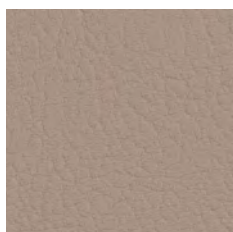
Lotus 2113



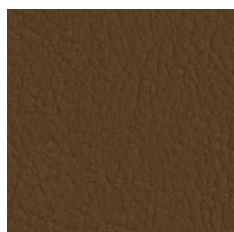
Chestnut 2115



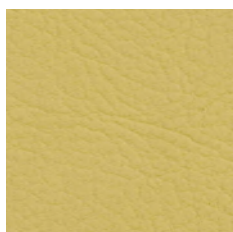
Buche 0033



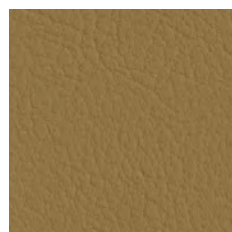
Warm Grey 4044



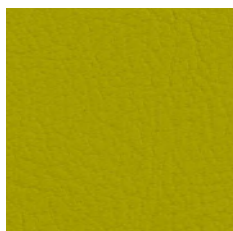
Sumatra 9001



Citrus 2109



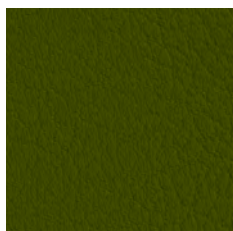
Champagne 1001



Avocado 2110



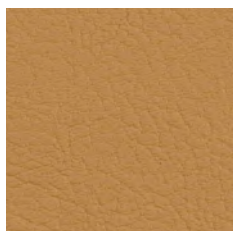
Apfel 5041



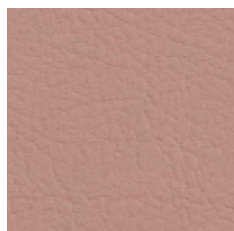
Olive 5001



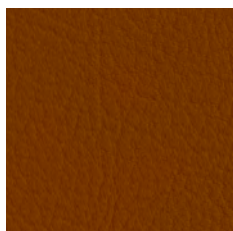
Sonne 2020



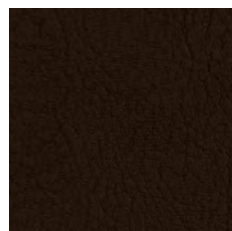
Cashmere 2117



Rosé 2114

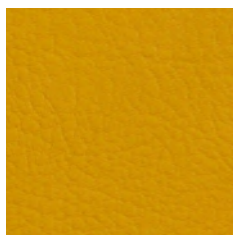


Terracotta 0035

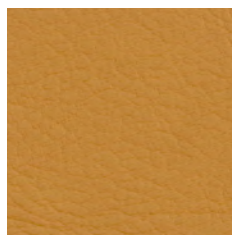


Praliné 0001

(1) Low Hazard, (2) Medium Hazard



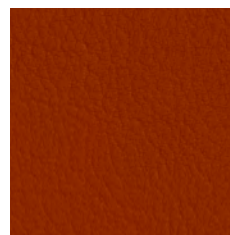
Squash 2111



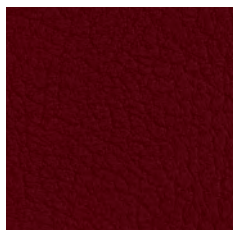
Camel 2116



Naranja 6019



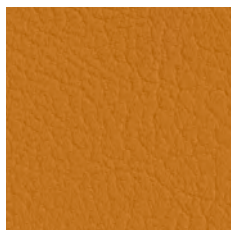
Nectarine 6003



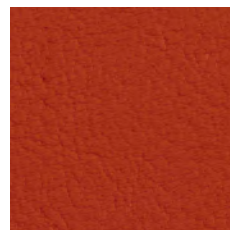
Port 2062



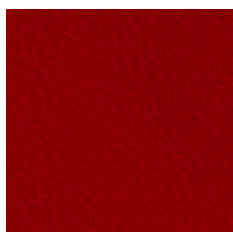
Safran 6012



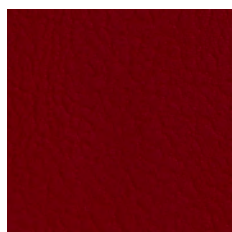
Melone 6013



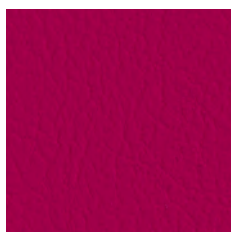
Tomato 2112



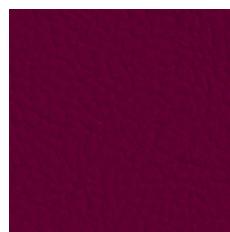
Rot 2075



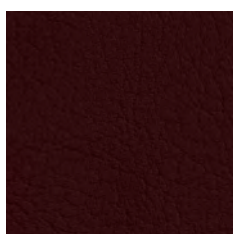
Krische 2074



Pink 2021



Berry 2002



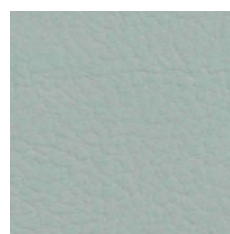
Merlot 2001



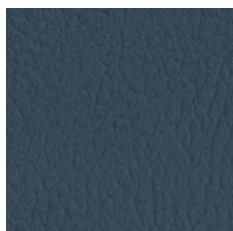
Ultra Violet 2118



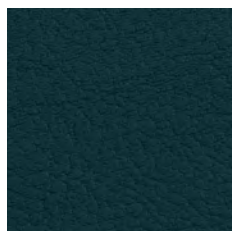
Amethyst 7001



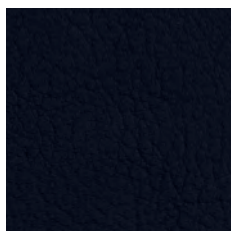
Skylight 2107



Titan 4042



Teal 2119



Marine 3068



Lavendel 3001

(1) Low Hazard, (2) Medium Hazard

SPRADLING VALENCIA VINYL (1)



Coral 2106



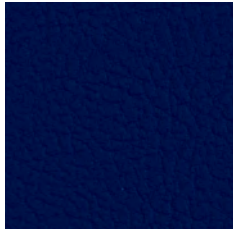
Jade 5056



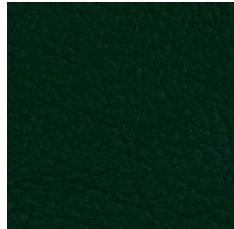
Türkis 5057



Baltic 3069



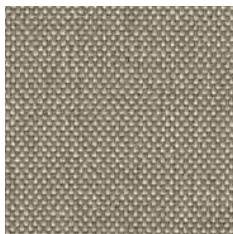
Delft 3067



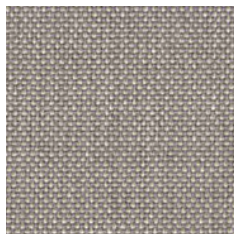
Grün 5069

GROUP 1

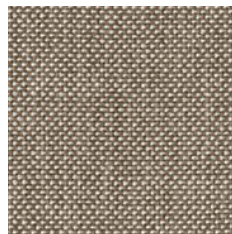
CREVIN FUSION (1)



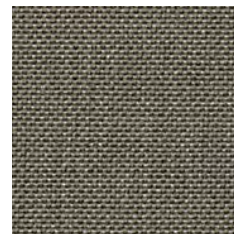
Fusion 05



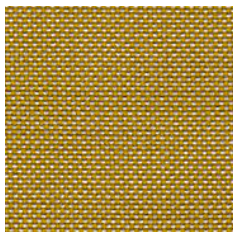
Fusion 07



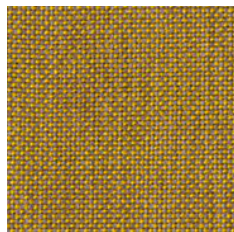
Fusion 08



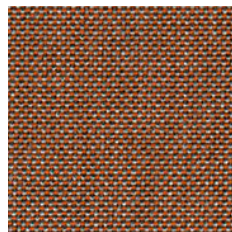
Fusion 11



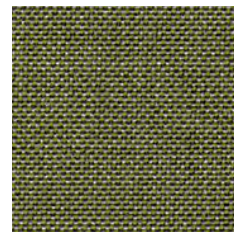
Fusion 13



Fusion 20



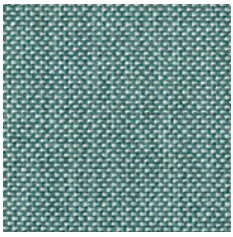
Fusion 24



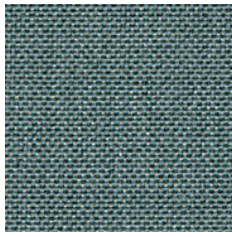
Fusion 36

GROUP 2

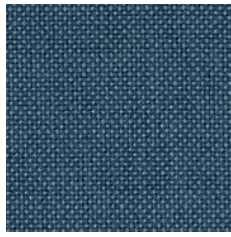
(1) Low Hazard, (2) Medium Hazard



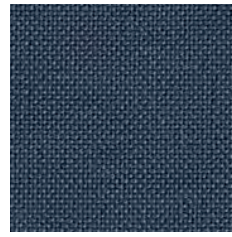
Fusion 40



Fusion 41



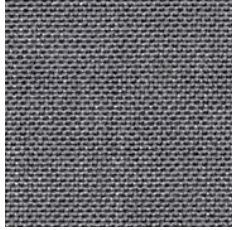
Fusion 42



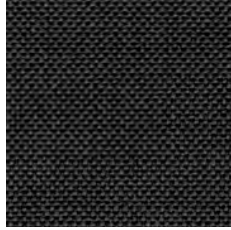
Fusion 43



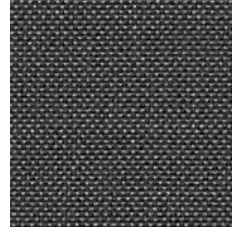
Fusion 45



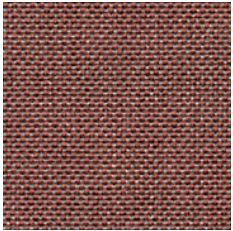
Fusion 51



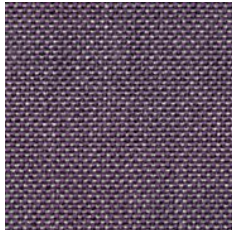
Fusion 53



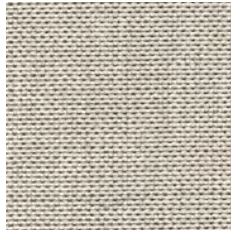
Fusion 54



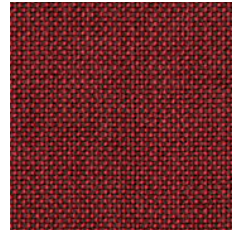
Fusion 60



Fusion 62



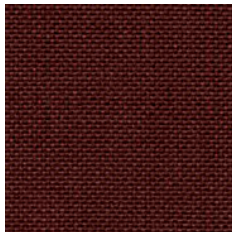
Fusion 80



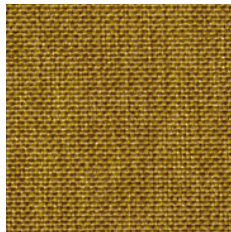
Fusion 91



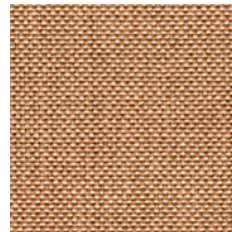
Fusion 95



Fusion 122



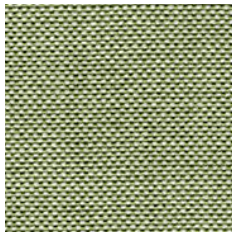
Fusion 125



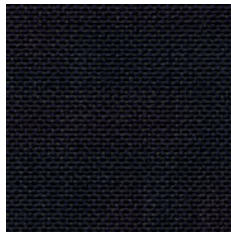
Fusion 126



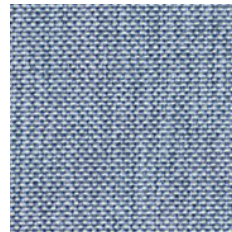
Fusion 138



Fusion 139



Fusion 143



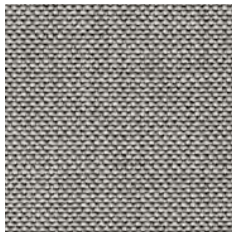
Fusion 149

(1) Low Hazard, (2) Medium Hazard

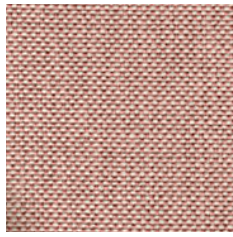
CREVIN FUSION (1)



Fusion 155



Fusion 159



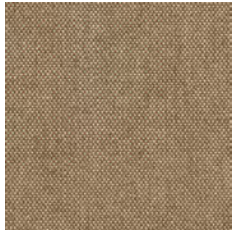
Fusion 171

CAMIRA MAIN LINE FLAX (2)

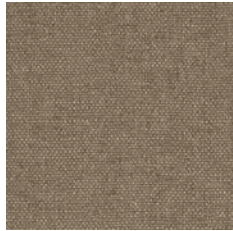


Upminster

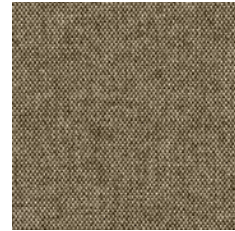
FASTTRACK



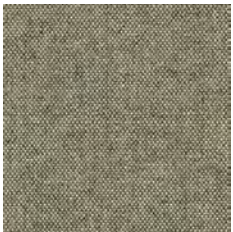
Morden



Redbridge

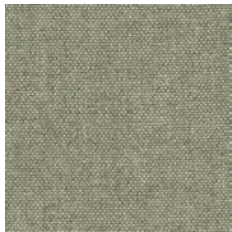


Bank

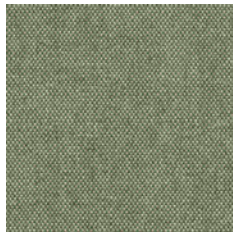


Archway

FASTTRACK

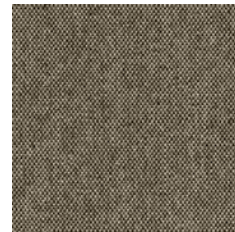


Newbury

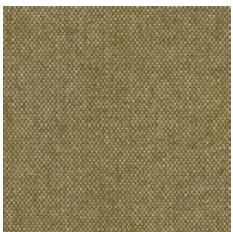


Monument

FASTTRACK



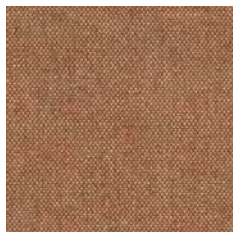
Shadwell



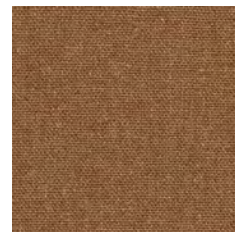
Kensington



Pinner

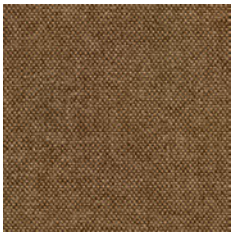


Lambeth

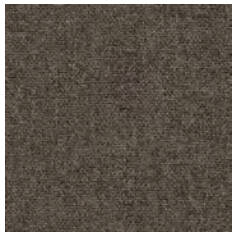


Perivale

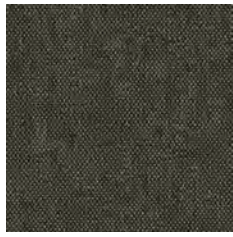
(1) Low Hazard, (2) Medium Hazard



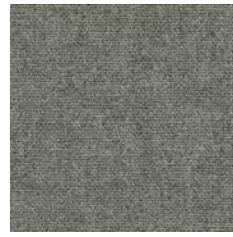
Stockwell



Richmond



Temple

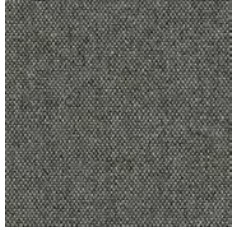


Stratford



Camden

FASTTRACK



Watford



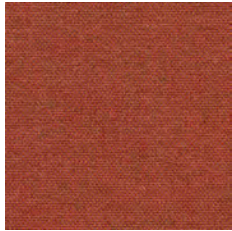
Whitechapel



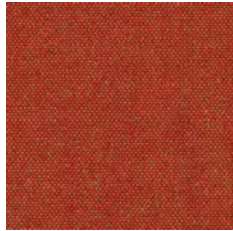
Edgware



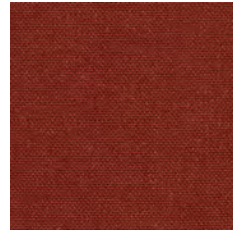
Alperton



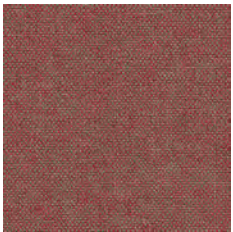
Balham



Leyton



Barking



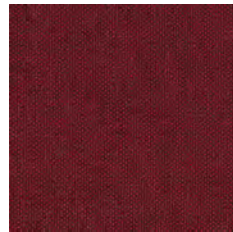
Barbican



Aldgate



Kilburn



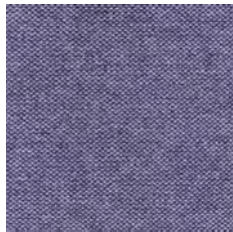
Parsons



Blackwall



Northfields



Charing

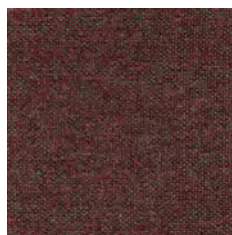


Euston

(1) Low Hazard, (2) Medium Hazard



Wembley



Paddington



Brixton



Waterloo



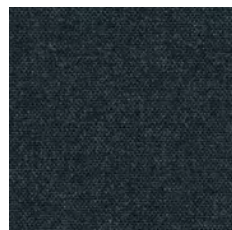
Hillingdon



Highgate



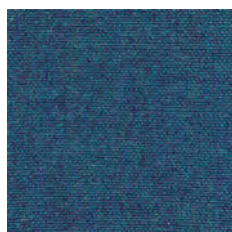
Chigwell



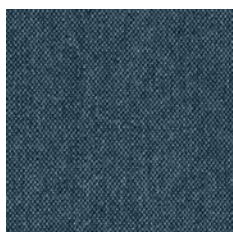
Tower



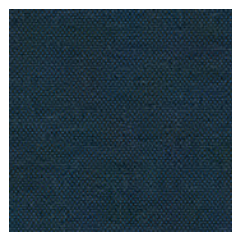
Epping



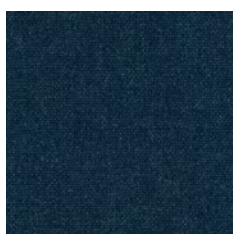
Russell



Clapham



Victoria



Embankment



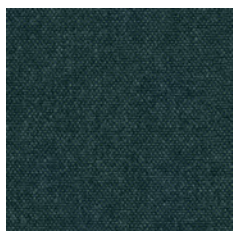
Holborn



Brompton



Pimlico



Hampstead



Hornchurch



Bayswater



Bethnal

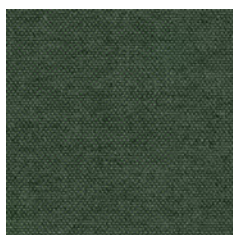
(1) Low Hazard, (2) Medium Hazard



Greenwich



Westminster



Greenford



Harrow



Farringdon



Stanmore



Moorgate



Kentish



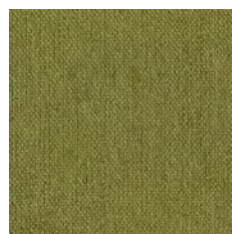
Tooting



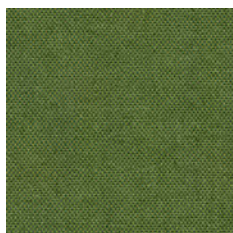
Goldhawk



Woodford



Finsbury



Tufnell

(1) Low Hazard, (2) Medium Hazard



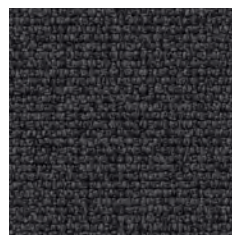
Medley 60003



Medley 60004



Medley 60167



Medley 60999



Medley 61002



Medley 61003

FASTTRACK

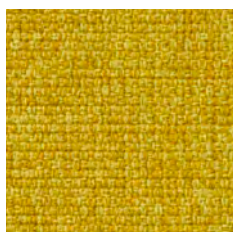


Medley 61004

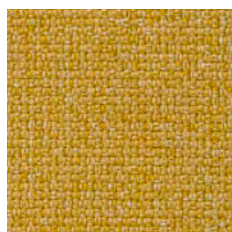


Medley 61189

FASTTRACK

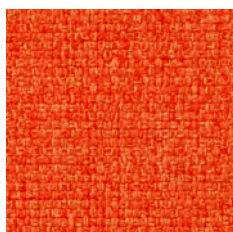


Medley 62002



Medley 62054

FASTTRACK



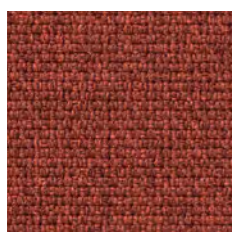
Medley 63013



Medley 63016

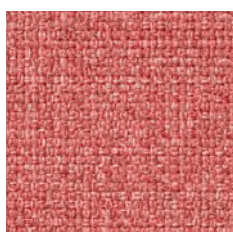


Medley 63017

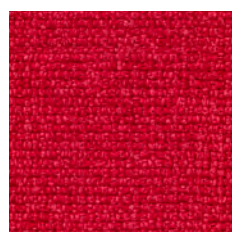


Medley 63063

FASTTRACK



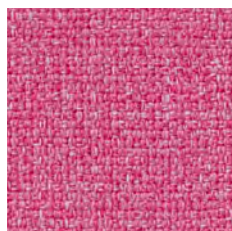
Medley 63064



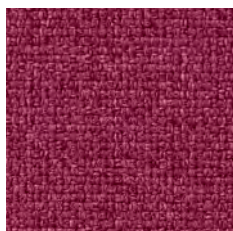
Medley 64019



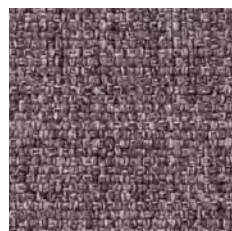
Medley 64123



Medley 64124

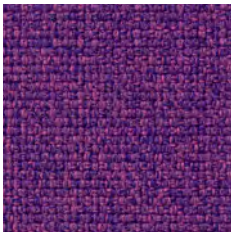


Medley 64125

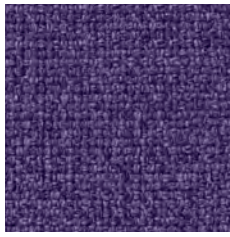


Medley 65011

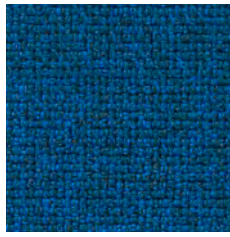
(1) Low Hazard, (2) Medium Hazard



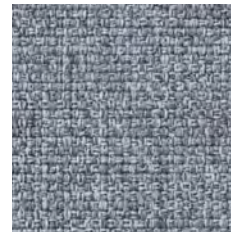
Medley 65012



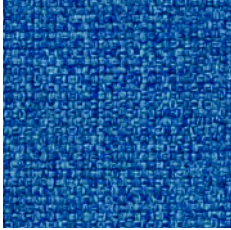
Medley 65086



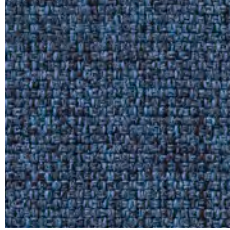
Medley 66007



Medley 66008

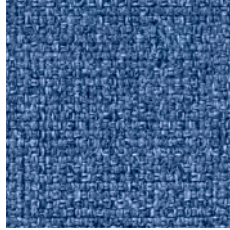


Medley 66009

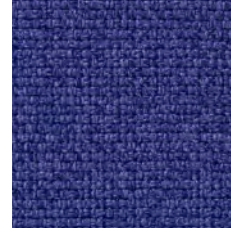


Medley 66010

FAST TRACK



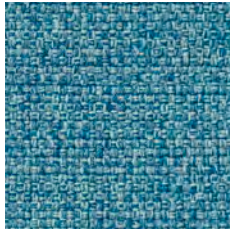
Medley 66144



Medley 66145



Medley 67002



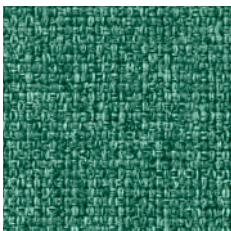
Medley 67006



Medley 67052



Medley 67053



Medley 67054



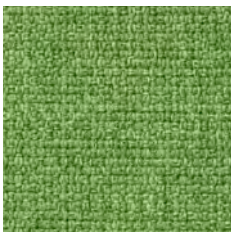
Medley 68002



Medley 68005



Medley 68114



Medley 68115

(1) Low Hazard, (2) Medium Hazard



Remix 3 113



Remix 3 123

FAST TRACK



Remix 3 126

FAST TRACK



Remix 3 133

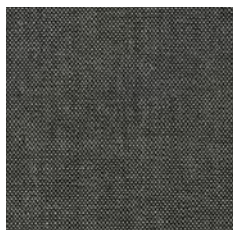


Remix 3 136



Remix 3 143

FAST TRACK



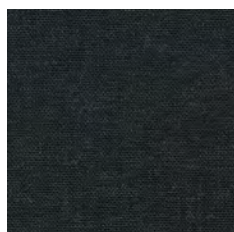
Remix 3 152



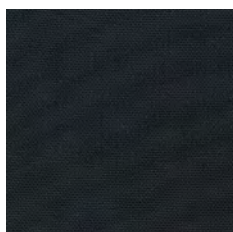
Remix 3 163



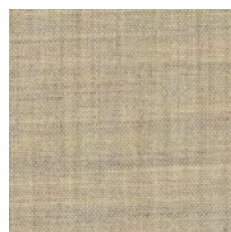
Remix 3 173



Remix 3 183



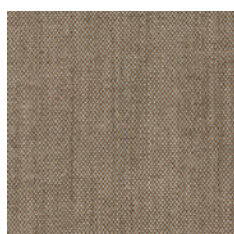
Remix 3 196



Remix 3 223

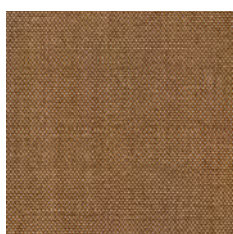


Remix 3 233



Remix 3 242

FAST TRACK



Remix 3 252



Remix 3 266



Remix 3 276



Remix 3 286



Remix 3 296

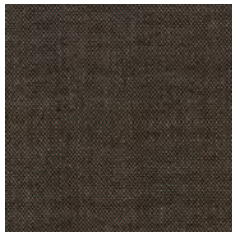


Remix 3 326

(1) Low Hazard, (2) Medium Hazard



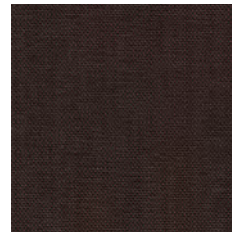
Remix 3 346



Remix 3 356



Remix 3 362



Remix 3 373



Remix 3 383



Remix 3 406



Remix 3 393



Remix 3 412



Remix 3 422



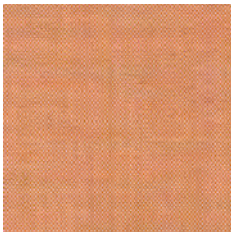
Remix 3 433



Remix 3 443



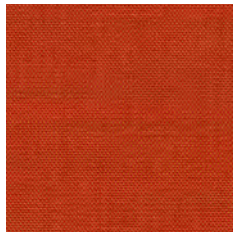
Remix 3 452



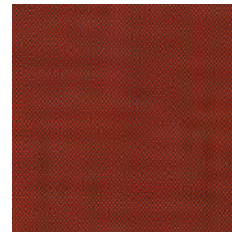
Remix 3 516



Remix 3 536



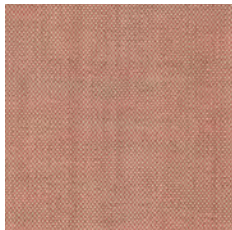
Remix 3 543



Remix 3 566



Remix 3 606

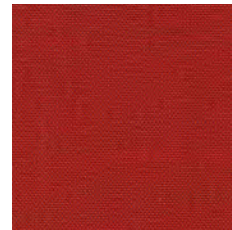


Remix 3 612

FAST TRACK



Remix 3 632

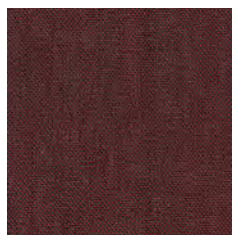


Remix 3 643

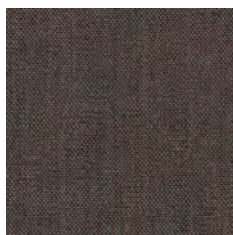
(1) Low Hazard, (2) Medium Hazard



Remix 3 653



Remix 3 662



Remix 3 672



Remix 3 682



Remix 3 686



Remix 3 692



Remix 3 716



Remix 3 722



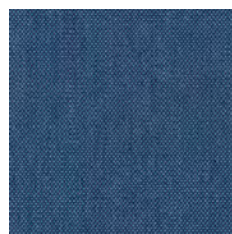
Remix 3 733



Remix 3 743



Remix 3 753



Remix 3 762



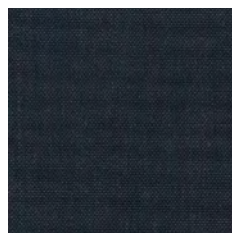
Remix 3 773



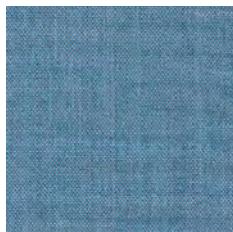
Remix 3 783



Remix 3 836



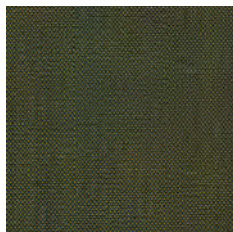
Remix 3 796



Remix 3 816



Remix 3 823



Remix 3 842



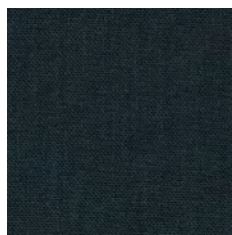
Remix 3 852

(1) Low Hazard, (2) Medium Hazard

KVADRAT REMIX 3 (1)



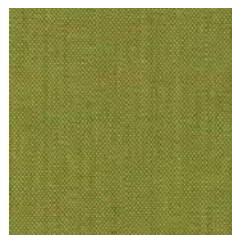
Remix 3 866



Remix 3 873



Remix 3 906



Remix 3 912



Remix 3 923



Remix 3 933



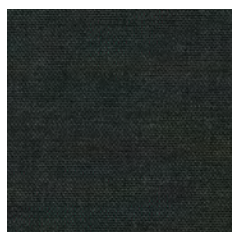
Remix 3 942



Remix 3 954



Remix 3 962



Remix 3 973



Remix 3 982



Remix 3 996

GABRIEL STEP (2)



Step 60004

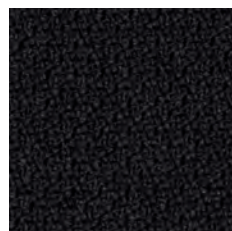
FASTTRACK



Step 60092



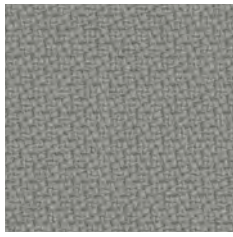
Step 66019



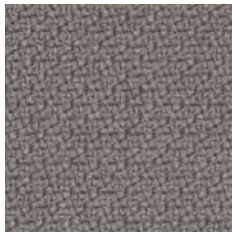
Step 60999

GROUP 2

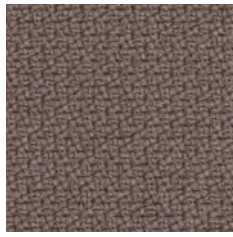
(1) Low Hazard, (2) Medium Hazard



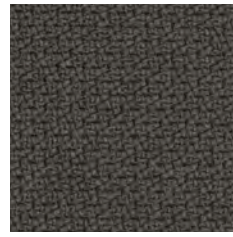
Step 60091



Step 60011



Step 60090

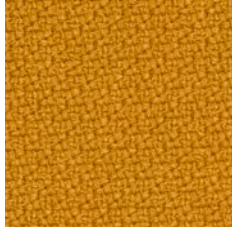


Step 60089



Step 61149

FAST TRACK



Step 62057



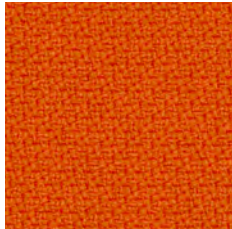
Step 61103



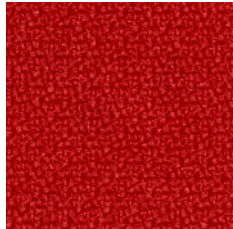
Step 61150



Step 60021



Step 63082



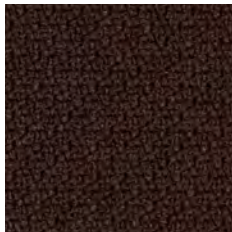
Step 63012



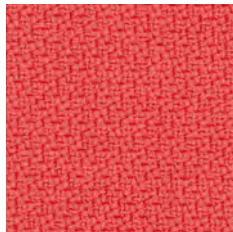
Step 63075



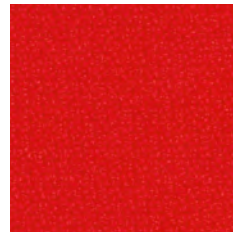
Step 64159



Step 61102



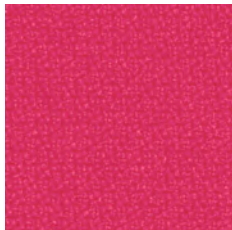
Step 64178



Step 64180



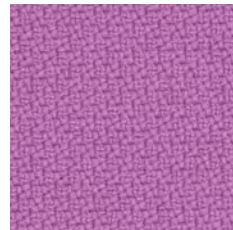
Step 64179



Step 64177

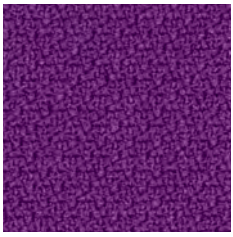


Step 64013

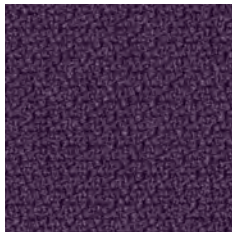


Step 65092

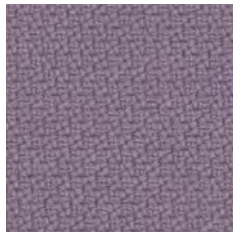
(1) Low Hazard, (2) Medium Hazard



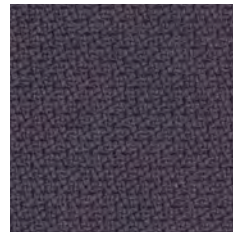
Step 65023



Step 65047



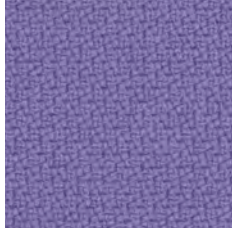
Step 65093



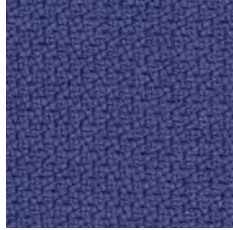
Step 65094



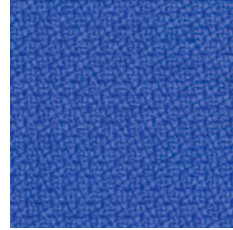
Step 65095



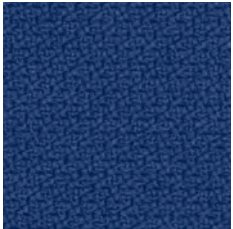
Step 65090



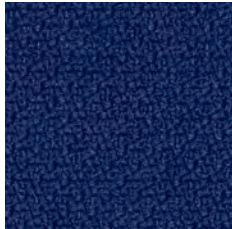
Step 65091



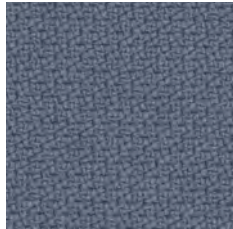
Step 66150



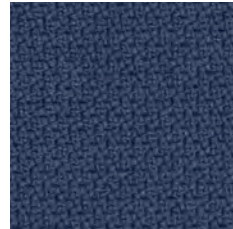
Step 66149



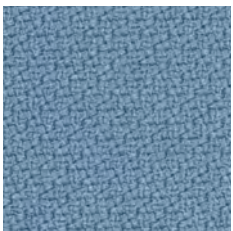
Step 65018



Step 66152



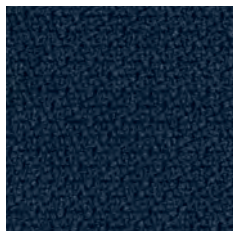
Step 66148



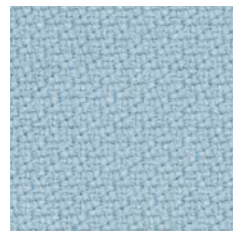
Step 66018



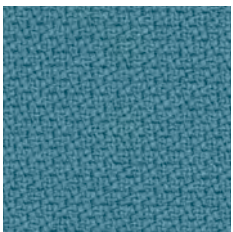
Step 66151



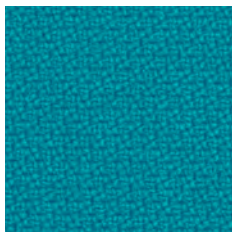
Step 65011



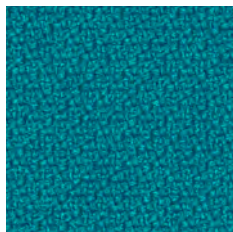
Step 67004



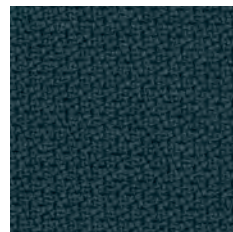
Step 67072



Step 67073



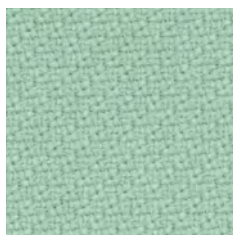
Step 67007



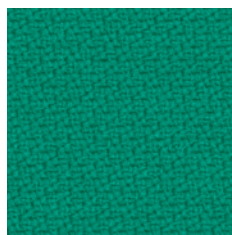
Step 68158

FASTTRACK

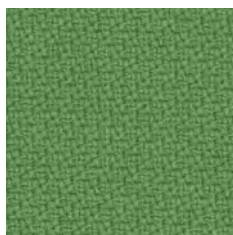
(1) Low Hazard, (2) Medium Hazard



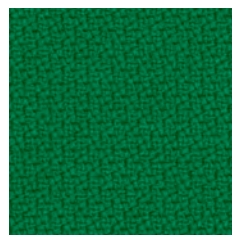
Step 68118



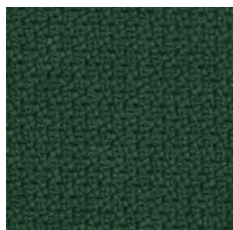
Step 68157



Step 68159



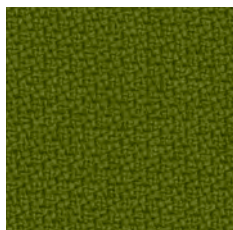
Step 68160



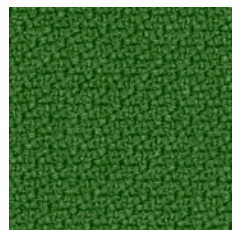
Step 68161



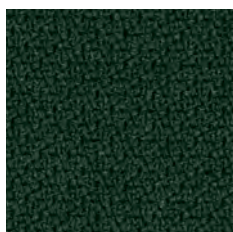
Step 68163



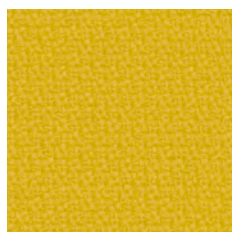
Step 68162



Step 68120



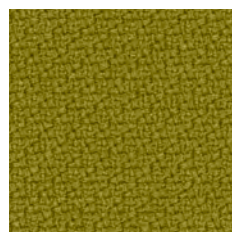
Step 68121



Step 62073



Step 68164



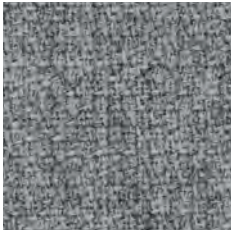
Step 68119



Step 68165

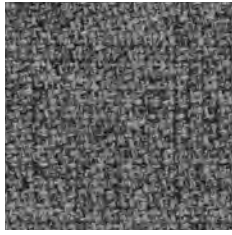
FAST TRACK

(1) Low Hazard, (2) Medium Hazard

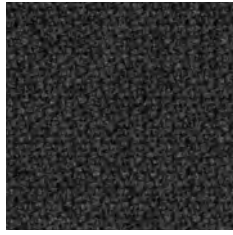


Step Melange 60004

FAST TRACK



Step Melange 60011



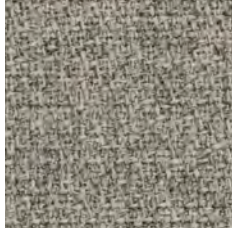
Step Melange 60021



Step Melange 60092



Step Melange 66019



Step Melange 61104

FAST TRACK



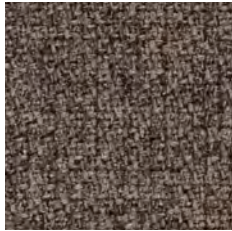
Step Melange 61149



Step Melange 60090



Step Melange 61152



Step Melange 61103



Step Melange 61150

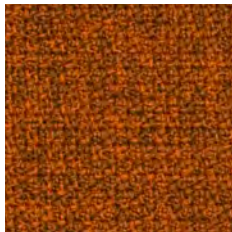


Step Melange 61102



Step Melange 62057

FAST TRACK



Step Melange 63082



Step Melange 61151



Step Melange 63075



Step Melange 64178



Step Melange 64179



Step Melange 64013



Step Melange 64159

(1) Low Hazard, (2) Medium Hazard



Step Melange 64177



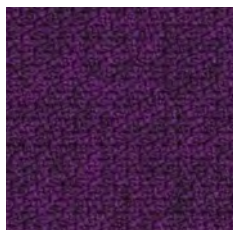
Step Melange 64182



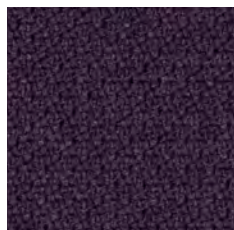
Step Melange 64181



Step Melange 65092



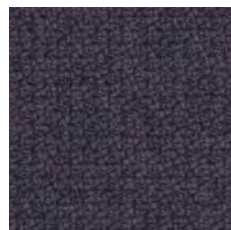
Step Melange 65023



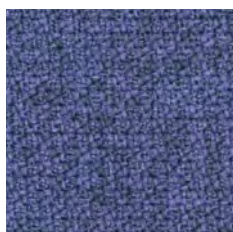
Step Melange 65047



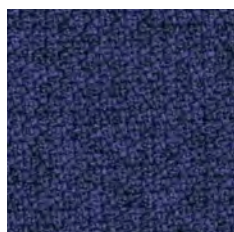
Step Melange 65093



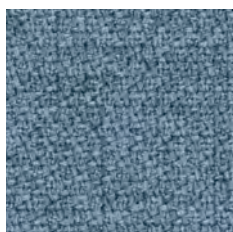
Step Melange 65094



Step Melange 65090



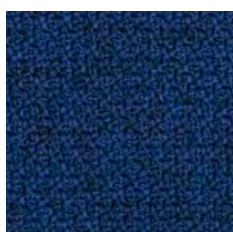
Step Melange 65091



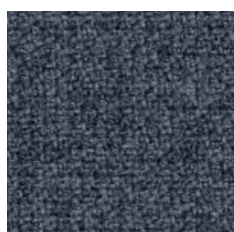
Step Melange 66018



Step Melange 66150



Step Melange 66149



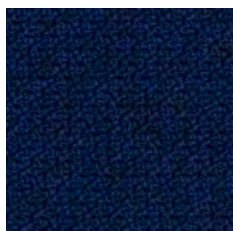
Step Melange 66152



Step Melange 66148



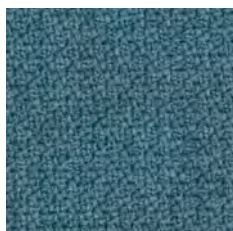
Step Melange 66151



Step Melange 65018



Step Melange 67004



Step Melange 67072

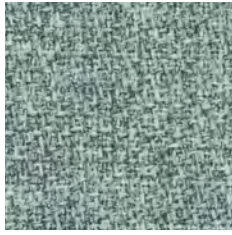


Step Melange 67007

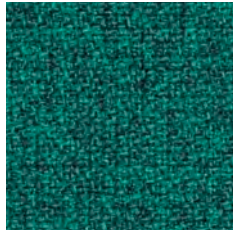
(1) Low Hazard, (2) Medium Hazard



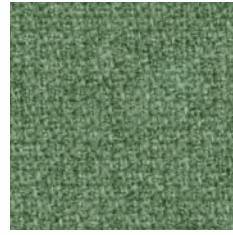
Step Melange 65011



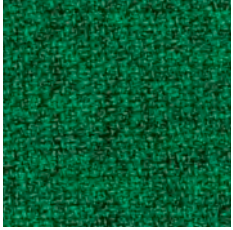
Step Melange 68118



Step Melange 68157



Step Melange 68159

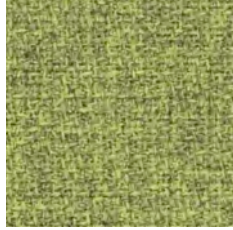


Step Melange 68160

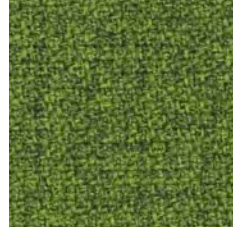


Step Melange 68158

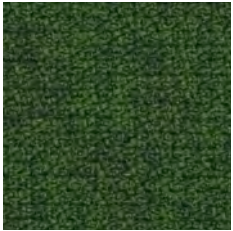
FAST TRACK



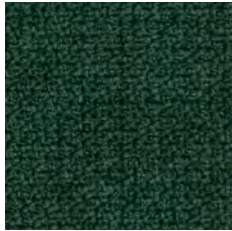
Step Melange 68163



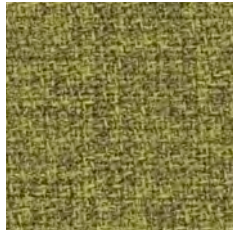
Step Melange 68162



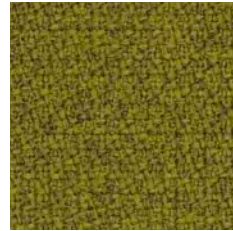
Step Melange 68120



Step Melange 68161



Step Melange 62073



Step Melange 68119

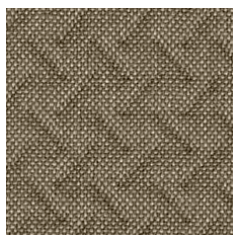


Step Melange 68165



Step Melange 68121

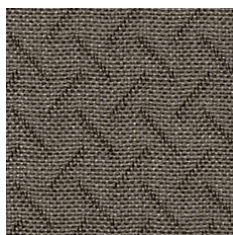
(1) Low Hazard, (2) Medium Hazard



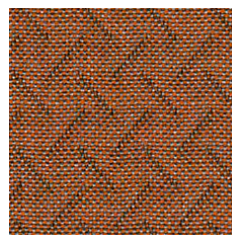
Arc 05



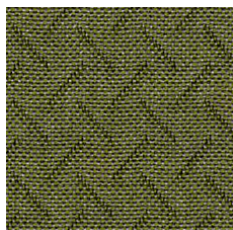
Arc 07



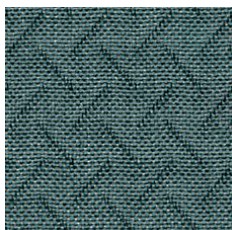
Arc 11



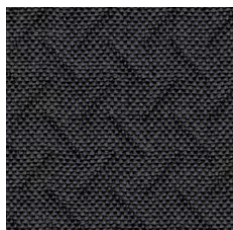
Arc 24



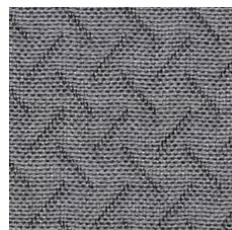
Arc 36



Arc 41



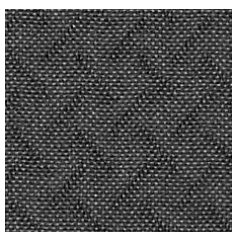
Arc 45



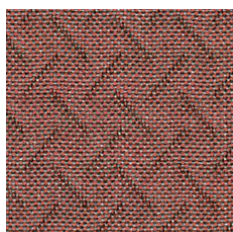
Arc 51



Arc 53



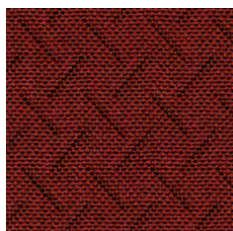
Arc 54



Arc 60



Arc 80



Arc 91



Arc 122



Arc 125



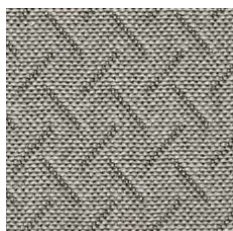
Arc 138



Arc 143



Arc 155



Arc 159

(1) Low Hazard, (2) Medium Hazard



Dartmouth



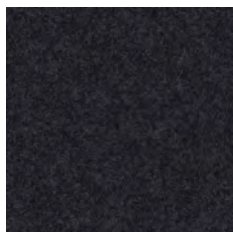
Fairfield



Aberlour



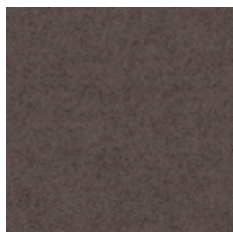
Silcoates



Bromsgrove



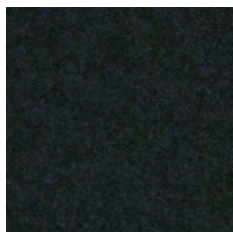
St Andrews



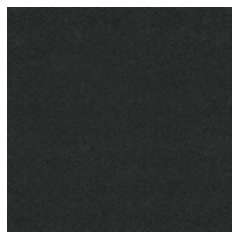
Trevelyan



Surrey



Glenalmond



Winchester



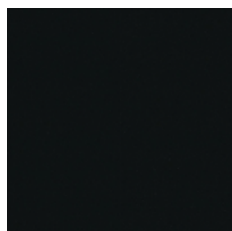
Stanford



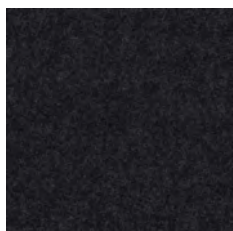
Barlborough



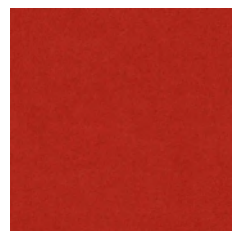
Scottsdale



Napier



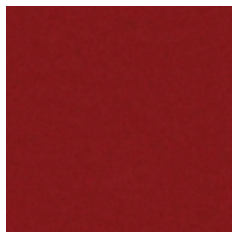
Kingsmead



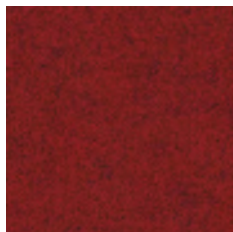
Goldsmith



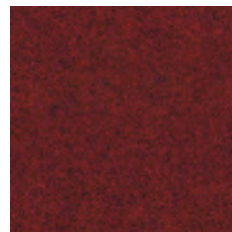
Oriel



Wellington



Handcross



Edge Hill

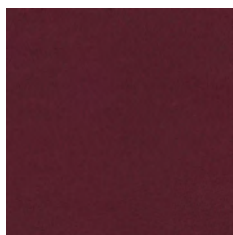
(1) Low Hazard, (2) Medium Hazard



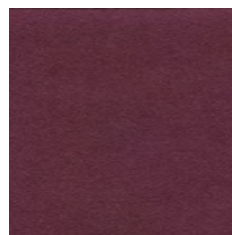
Silverdale



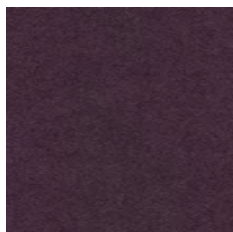
Sheffield



Magdalene



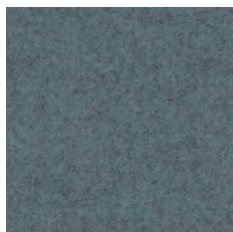
Barnard



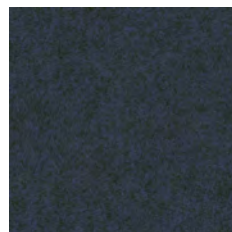
Holyoke



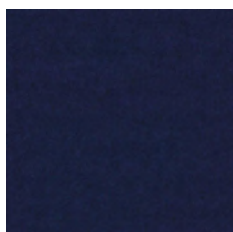
Plymouth



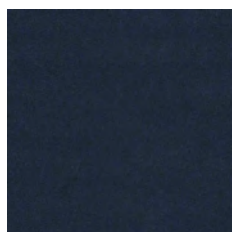
Latymer



Newcastle



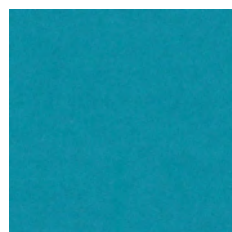
Oxford



Edinburgh



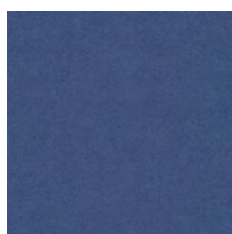
Woodcroft



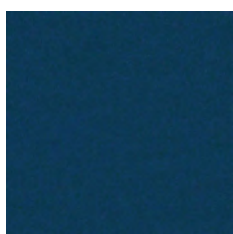
Aston



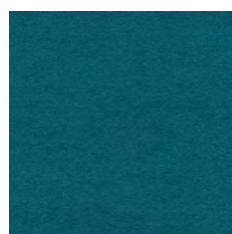
Marymount



Manchester



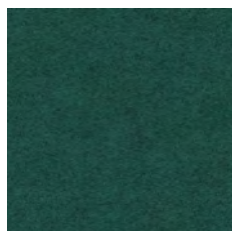
Knightsbridge



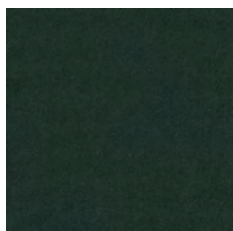
Vassar



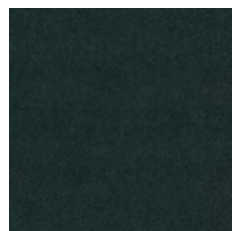
Tyndale



Abertay



Cardiff



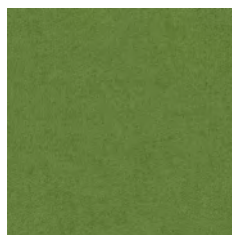
Hull

(1) Low Hazard, (2) Medium Hazard

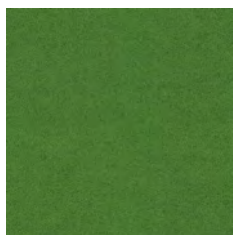
CAMIRA BLAZER (1)



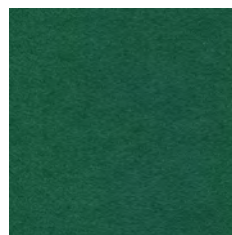
Penola



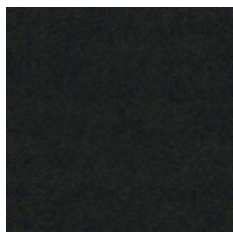
Bryanston



Newport



Montcrest



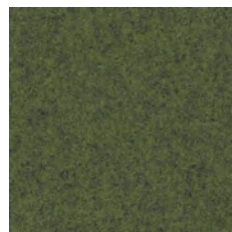
Glasgow



Dunhurst



Ulster



Camphill



Wesley



Eynesbury

GROUP 3

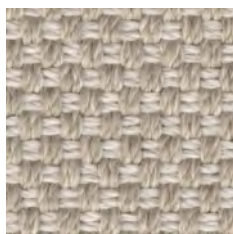
CREVIN BORA BORA (1)



Bora Bora 05



Bora Bora 07



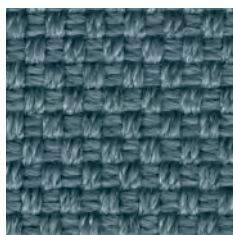
Bora Bora 08



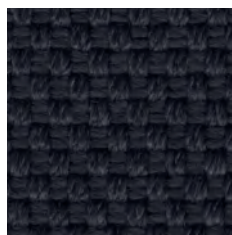
Bora Bora 11

(1) Low Hazard, (2) Medium Hazard

CREVIN BORA BORA (1)



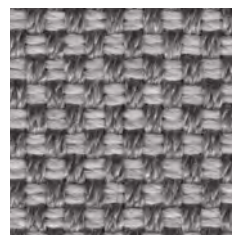
Bora Bora 42



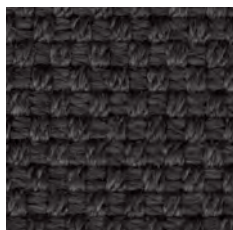
Bora Bora 47



Bora Bora 50



Bora Bora 51



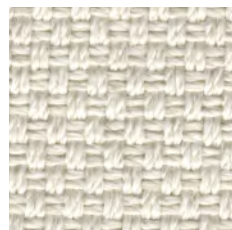
Bora Bora 53



Bora Bora 54



Bora Bora 59

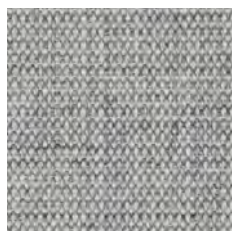


Bora Bora 99

KVADRAT CANVAS 2 (1)

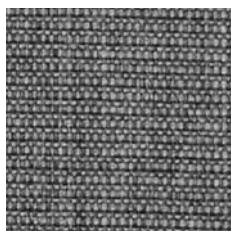


Canvas 2 114

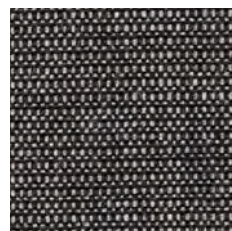


Canvas 2 124

FAST TRACK



Canvas 2 134



Canvas 2 154



Canvas 2 174



Canvas 2 216



Canvas 2 224



Canvas 2 244

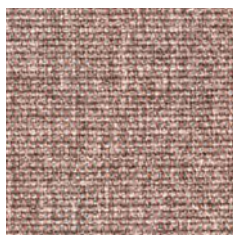
(1) Low Hazard, (2) Medium Hazard



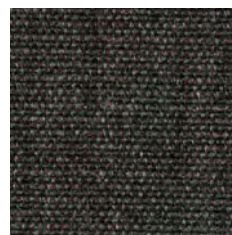
Canvas 2 254



Canvas 2 264



Canvas 2 356



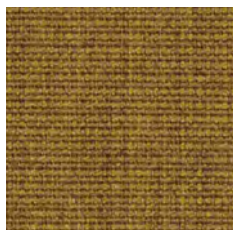
Canvas 2 364



Canvas 2 374



Canvas 2 414



Canvas 2 424



Canvas 2 446



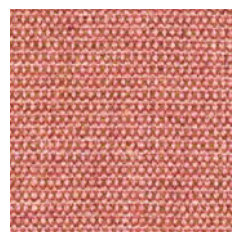
Canvas 2 454



Canvas 2 546



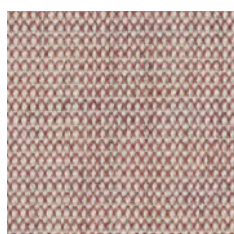
Canvas 2 556



Canvas 2 566



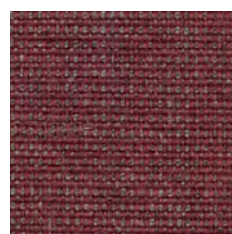
Canvas 2 576



Canvas 2 614



Canvas 2 644



Canvas 2 654



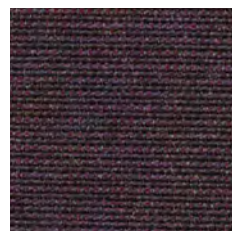
Canvas 2 666



Canvas 2 674



Canvas 2 684

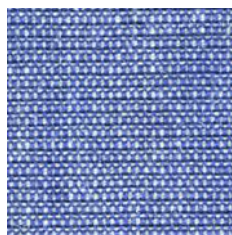


Canvas 2 694

(1) Low Hazard, (2) Medium Hazard



Canvas 2 716

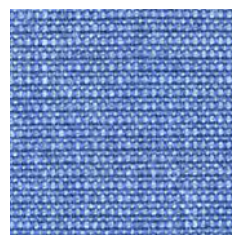


Canvas 2 726



Canvas 2 734

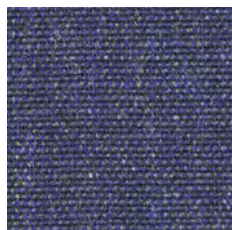
FAST TRACK



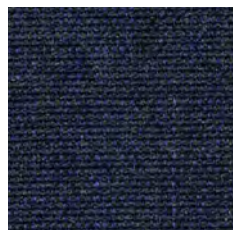
Canvas 2 746



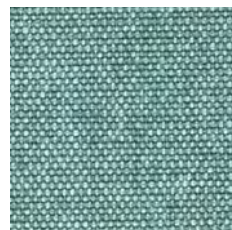
Canvas 2 764



Canvas 2 786



Canvas 2 794

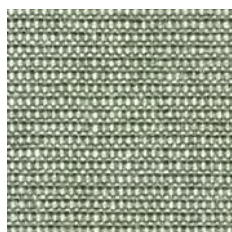


Canvas 2 836

FAST TRACK



Canvas 2 854



Canvas 2 926



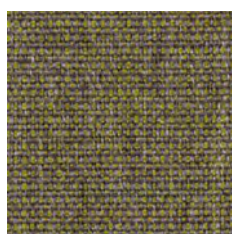
Canvas 2 936



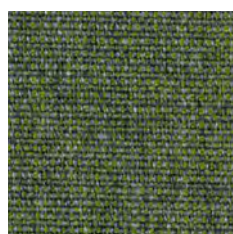
Canvas 2 946



Canvas 2 954



Canvas 2 964



Canvas 2 974



Canvas 2 984



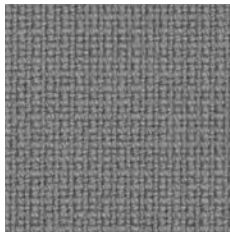
Canvas 2 996

FAST TRACK

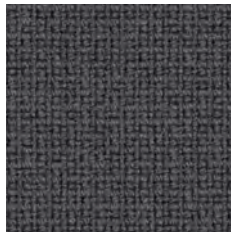
(1) Low Hazard, (2) Medium Hazard



Fame 60005



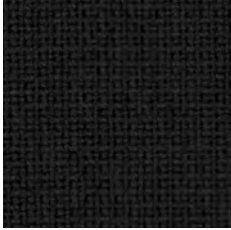
Fame 60078



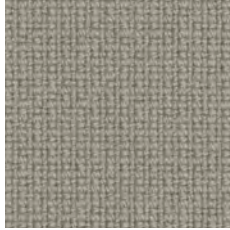
Fame 60003



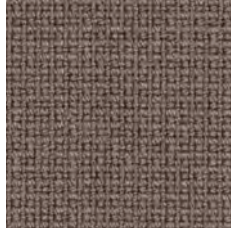
Fame 60017



Fame 60999



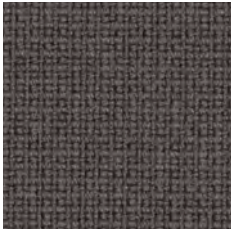
Fame 61136



Fame 61135



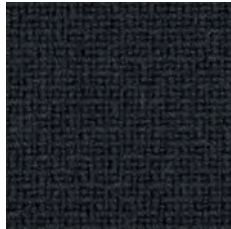
Fame 61060



Fame 61133



Fame 60019



Fame 60051



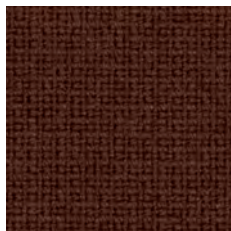
Fame 61003



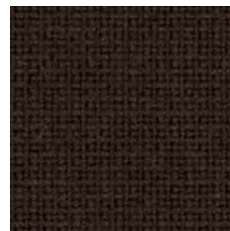
Fame 61131



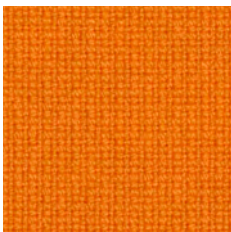
Fame 63076



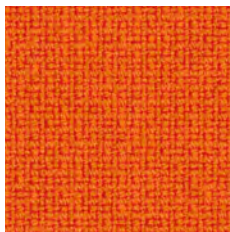
Fame 61047



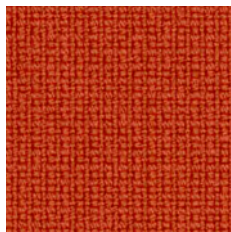
Fame 61044



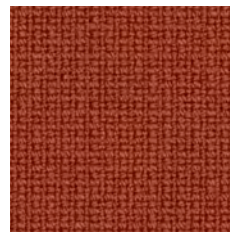
Fame 63077



Fame 63016

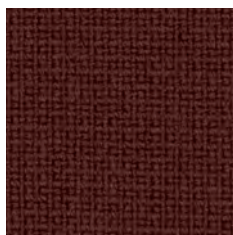


Fame 63078

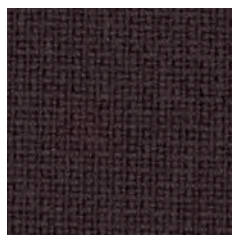


Fame 64168

(1) Low Hazard, (2) Medium Hazard



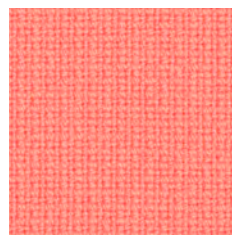
Fame 64167



Fame 61108



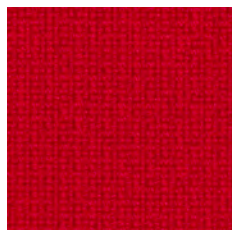
Fame 64169



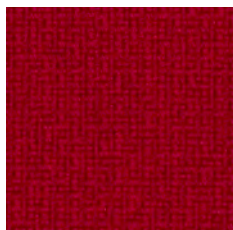
Fame 64165



Fame 64166



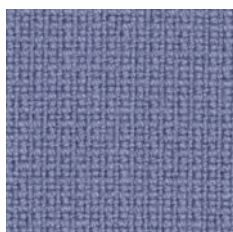
Fame 64119



Fame 64089



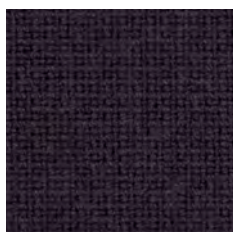
Fame 64058



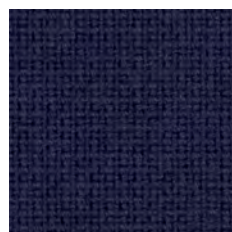
Fame 65081



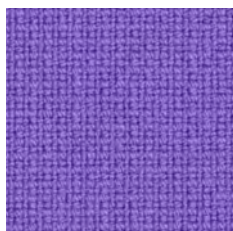
Fame 65082



Fame 64055



Fame 66132



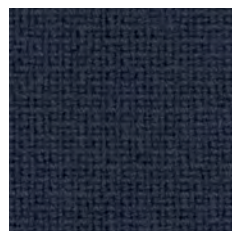
Fame 65083



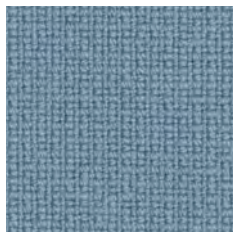
Fame 65084



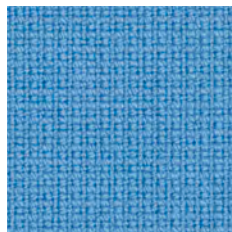
Fame 66005



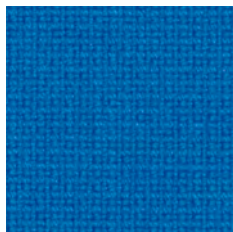
Fame 66061



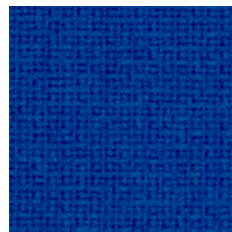
Fame 66130



Fame 66118

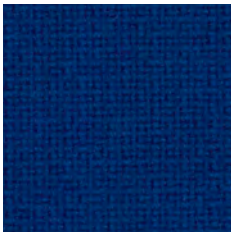


Fame 66131

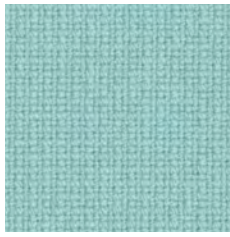


Fame 66075

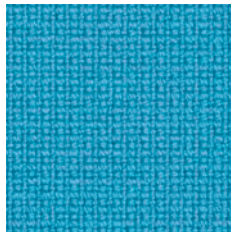
(1) Low Hazard, (2) Medium Hazard



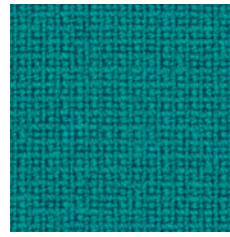
Fame 66032



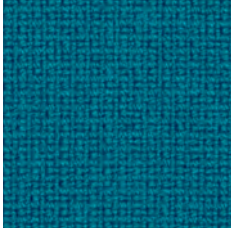
Fame 67068



Fame 66133



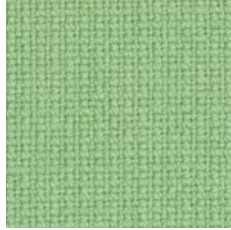
Fame 67016



Fame 67004



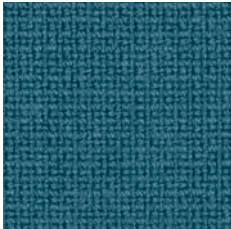
Fame 66071



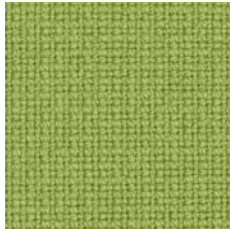
Fame 68147



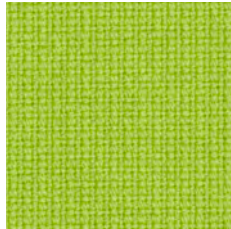
Fame 67067



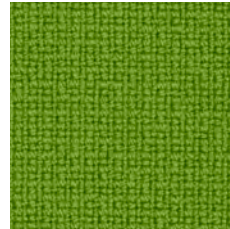
Fame 67069



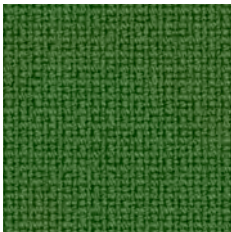
Fame 68145



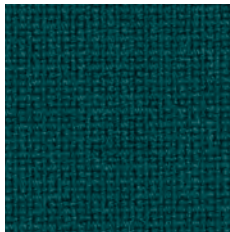
Fame 68144



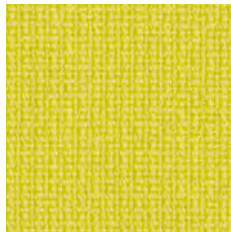
Fame 68035



Fame 68146



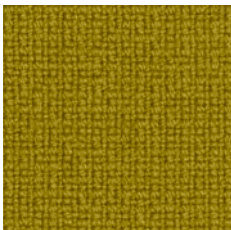
Fame 68143



Fame 62067



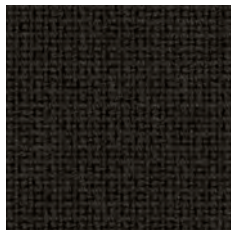
Fame 62068



Fame 68004



Fame 68148

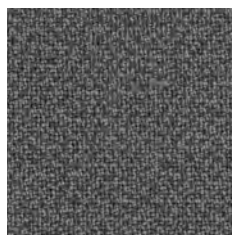


Fame 61134

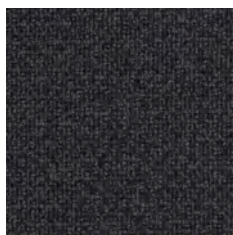
(1) Low Hazard, (2) Medium Hazard



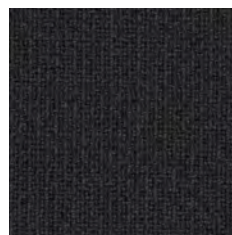
Fame-Hybrid 01101



Fame-Hybrid 01201



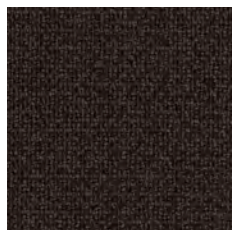
Fame-Hybrid 01301



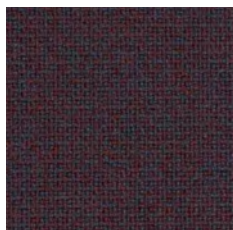
Fame-Hybrid 01401



Fame-Hybrid 01501



Fame-Hybrid 01601



Fame-Hybrid 01701



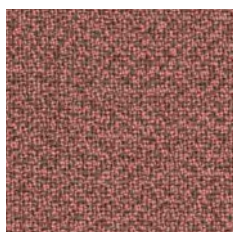
Fame-Hybrid 01801



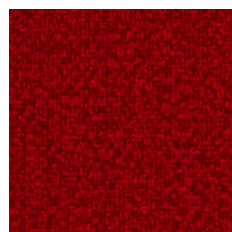
Fame-Hybrid 01901



Fame-Hybrid 02001



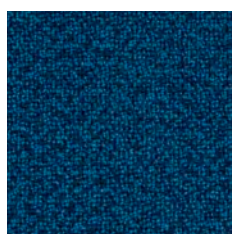
Fame-Hybrid 02101



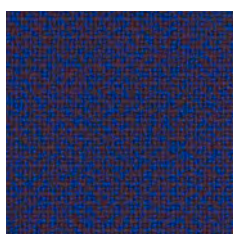
Fame-Hybrid 02201



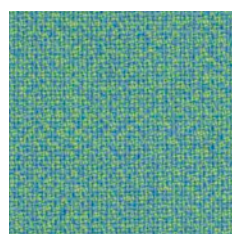
Fame-Hybrid 02301



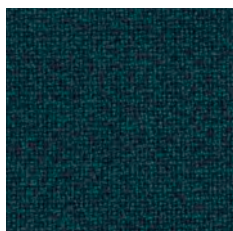
Fame-Hybrid 02401



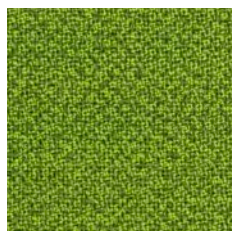
Fame-Hybrid 02501



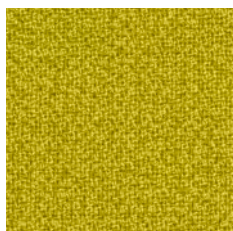
Fame-Hybrid 02601



Fame-Hybrid 02701

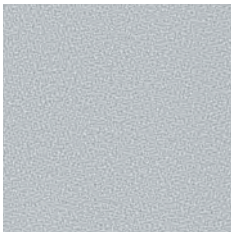


Fame-Hybrid 02801

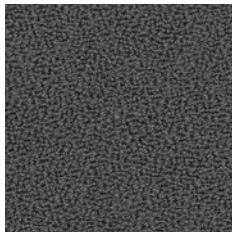


Fame-Hybrid 02901

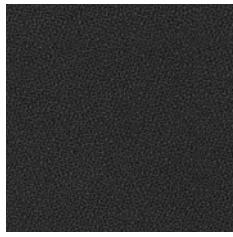
(1) Low Hazard, (2) Medium Hazard



GajaC2C 60001



GajaC2C 60003



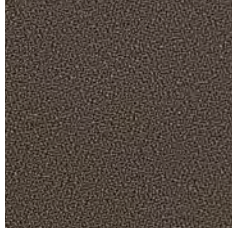
GajaC2C 60051



GajaC2C 60999



GajaC2C 61115



GajaC2C 61114



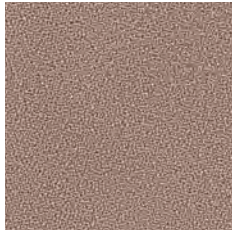
GajaC2C 61113



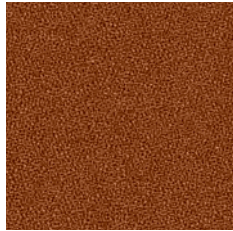
GajaC2C 62037



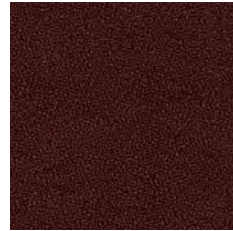
GajaC2C 60000



GajaC2C 61112



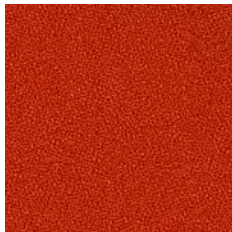
GajaC2C 61110



GajaC2C 61111



GajaC2C 63065



GajaC2C 63066



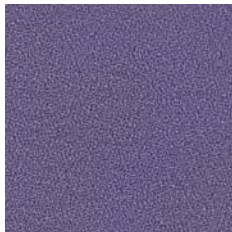
GajaC2C 64155



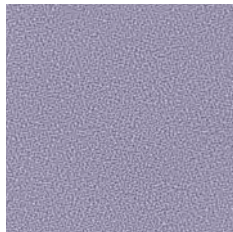
GajaC2C 64152



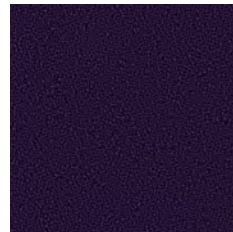
GajaC2C 64154



GajaC2C 65073



GajaC2C 65074

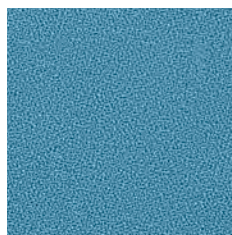


GajaC2C 65075

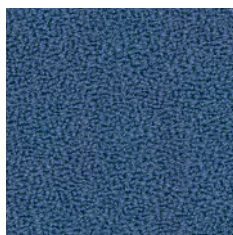
(1) Low Hazard, (2) Medium Hazard



GajaC2C 66099



GajaC2C 66105



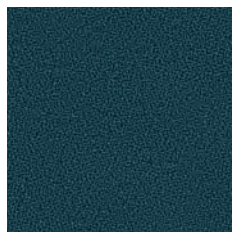
GajaC2C 66006



GajaC2C 67041



GajaC2C 67042



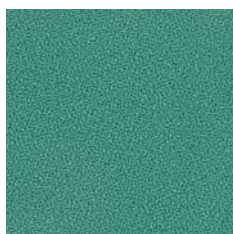
GajaC2C 67040



GajaC2C 66061



GajaC2C 68090



GajaC2C 68091



GajaC2C 68094



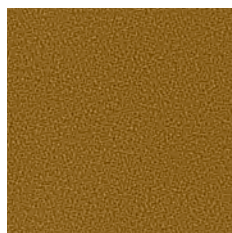
GajaC2C 68093



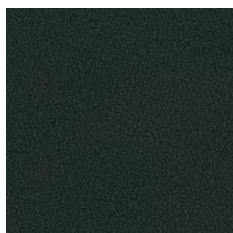
GajaC2C 62039



GajaC2C 62040



GajaC2C 62041



GajaC2C 68092

(1) Low Hazard, (2) Medium Hazard



Maple 102



Maple 112



Maple 136



Maple 142



Maple 172



Maple 192



Maple 202



Maple 212



Maple 232



Maple 332



Maple 342



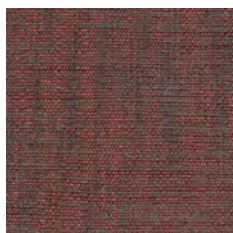
Maple 352



Maple 392



Maple 542



Maple 562



Maple 662



Maple 732



Maple 742



Maple 762



Maple 792

(1) Low Hazard, (2) Medium Hazard

KVADRAT MAPLE (1)



Maple 222



Maple 832



Maple 362



Maple 162



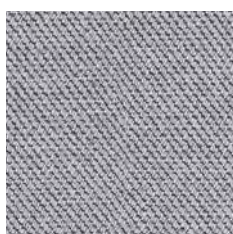
Maple 722



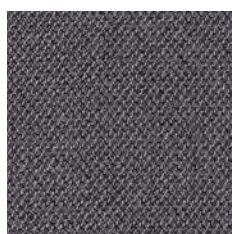
Maple 862

GROUP 3

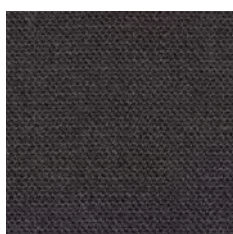
GABRIEL CAPTURE (1)



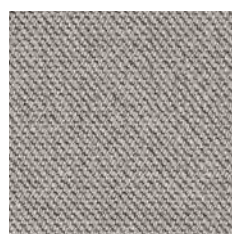
Capture 4102



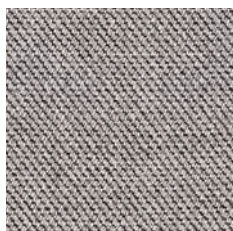
Capture 4601



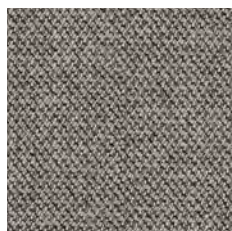
Capture 5501



Capture 4101



Capture 4001



Capture 4401



Capture 4201



Capture 6101

GROUP 4

(1) Low Hazard, (2) Medium Hazard



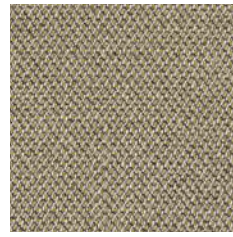
Capture 6201



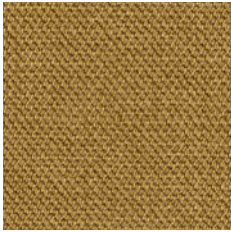
Capture 6301



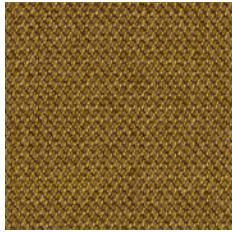
Capture 5103



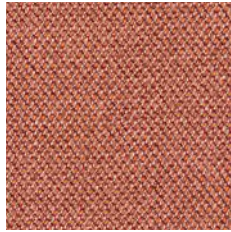
Capture 5102



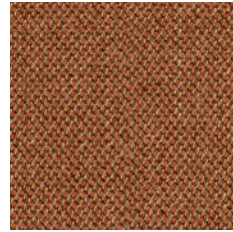
Capture 6801



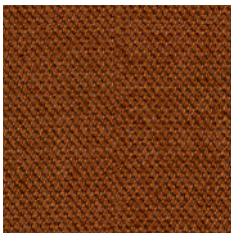
Capture 6401



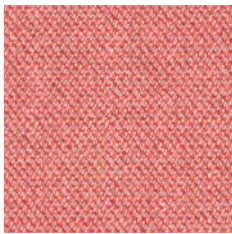
Capture 4301



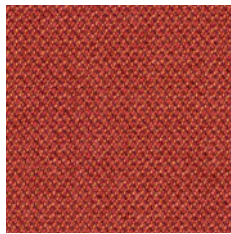
Capture 7401



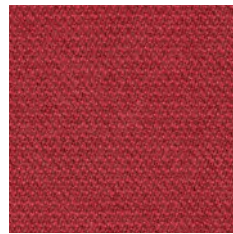
Capture 7501



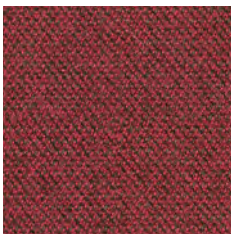
Capture 4802



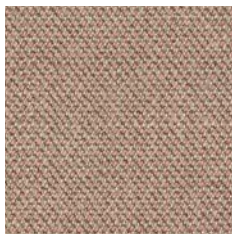
Capture 4702



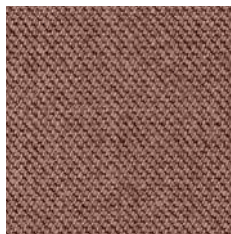
Capture 5401



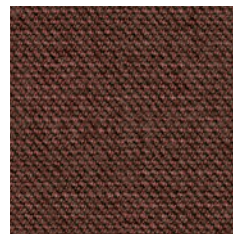
Capture 5402



Capture 4803



Capture 7201



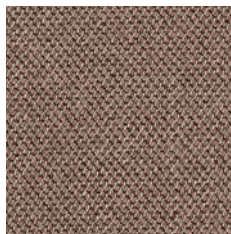
Capture 7301



Capture 6901



Capture 4801



Capture 6701

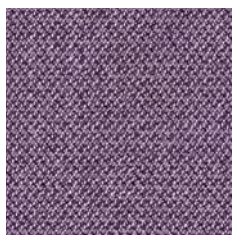


Capture 6302

(1) Low Hazard, (2) Medium Hazard



Capture 6202



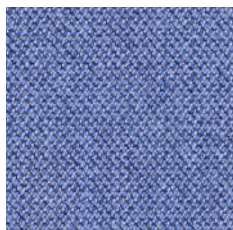
Capture 4501



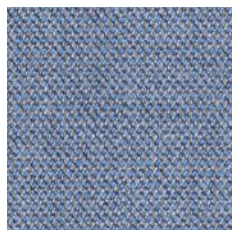
Capture 7001



Capture 5201



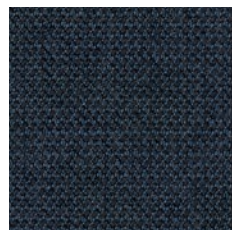
Capture 4901



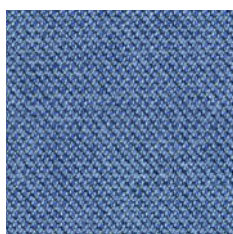
Capture 4902



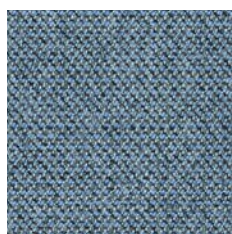
Capture 6602



Capture 6001



Capture 5002



Capture 5001



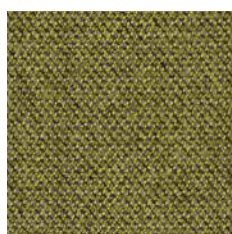
Capture 6601



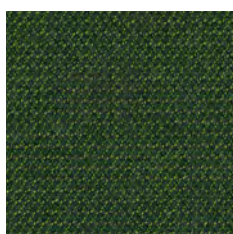
Capture 7101



Capture 5101

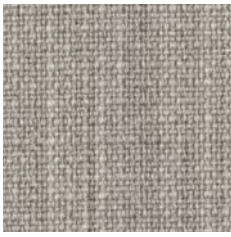


Capture 5301

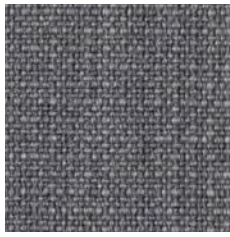


Capture 6501

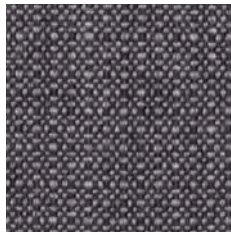
(1) Low Hazard, (2) Medium Hazard



Crisp 04033



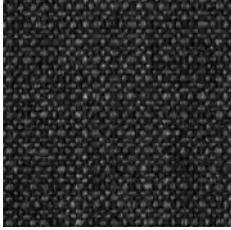
Crisp 04021



Crisp 04022



Crisp 04011



Crisp 04013



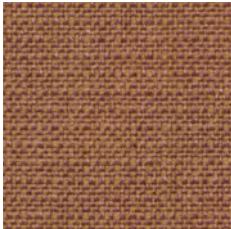
Crisp 04031



Crisp 04032



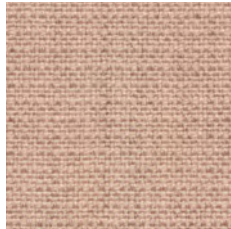
Crisp 04115



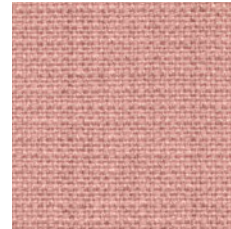
Crisp 04701



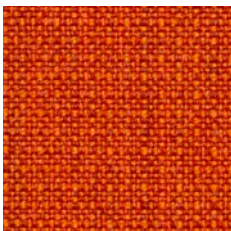
Crisp 04123



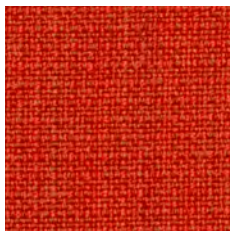
Crisp 04711



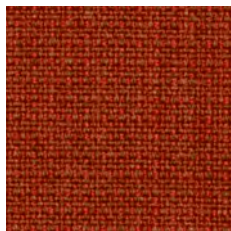
Crisp 04712



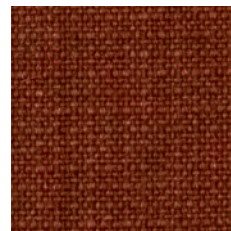
Crisp 04430



Crisp 04431



Crisp 04302



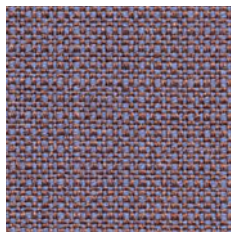
Crisp 04301



Crisp 04432



Crisp 04411



Crisp 04702



Crisp 04721

(1) Low Hazard, (2) Medium Hazard



Crisp 04722



Crisp 04125



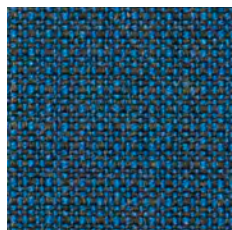
Crisp 04034



Crisp 04604



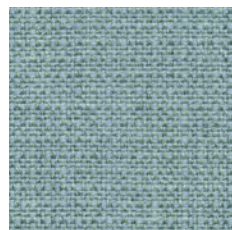
Crisp 04601



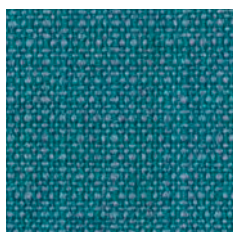
Crisp 04122



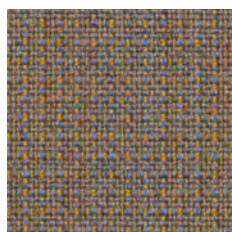
Crisp 04741



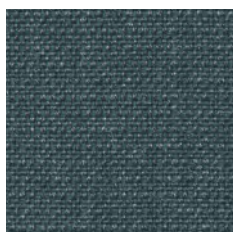
Crisp 04751



Crisp 04602



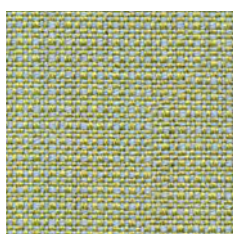
Crisp 04603



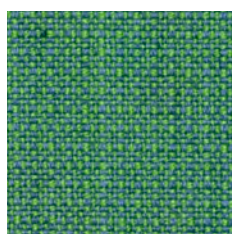
Crisp 04723



Crisp 04731



Crisp 04201



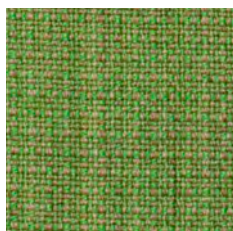
Crisp 04605



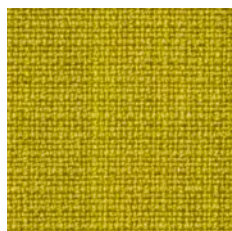
Crisp 04752



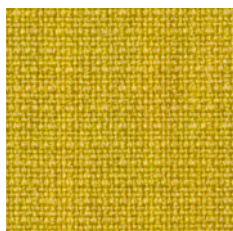
Crisp 04761



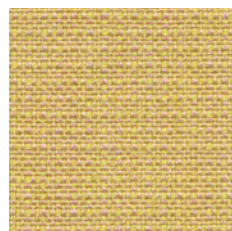
Crisp 04117



Crisp 04203



Crisp 04211

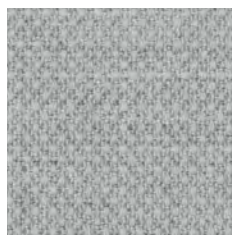


Crisp 04771

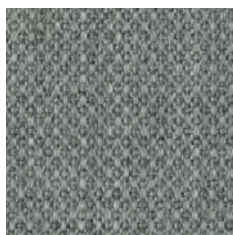
(1) Low Hazard, (2) Medium Hazard



Fiord 2 101



Fiord 2 121



Fiord 2 151



Fiord 2 171



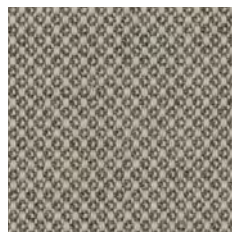
Fiord 2 191



Fiord 2 201



Fiord 2 251



Fiord 2 262



Fiord 2 271



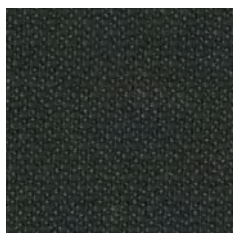
Fiord 2 322



Fiord 2 351



Fiord 2 371



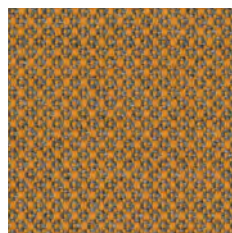
Fiord 2 382



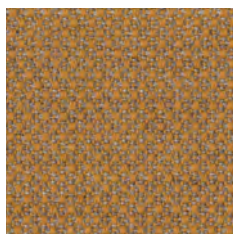
Fiord 2 391



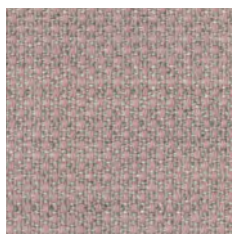
Fiord 2 422



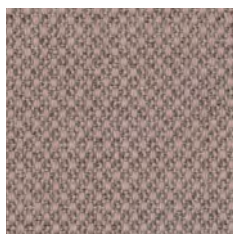
Fiord 2 442



Fiord 2 451



Fiord 2 521



Fiord 2 551



Fiord 2 562

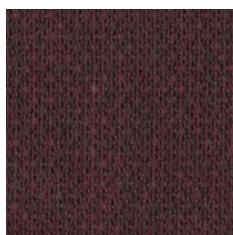
(1) Low Hazard, (2) Medium Hazard



Fiord 2 571



Fiord 2 581



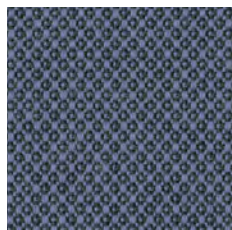
Fiord 2 591



Fiord 2 642



Fiord 2 662



Fiord 2 672



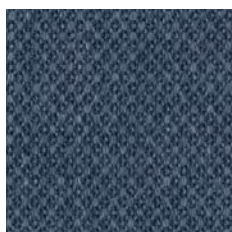
Fiord 2 721



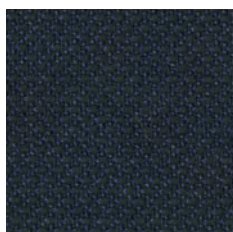
Fiord 2 751



Fiord 2 762



Fiord 2 771



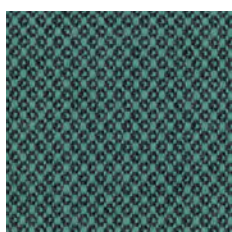
Fiord 2 782



Fiord 2 791



Fiord 2 821



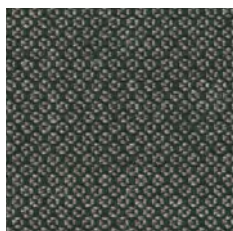
Fiord 2 862



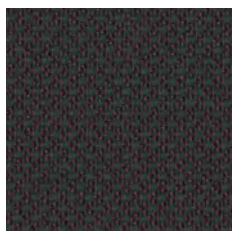
Fiord 2 951



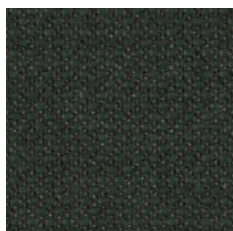
Fiord 2 961



Fiord 2 971



Fiord 2 981

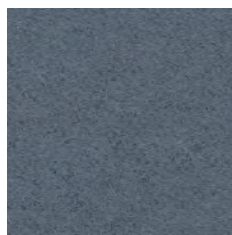


Fiord 2 991

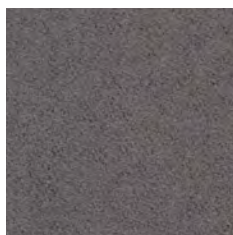
(1) Low Hazard, (2) Medium Hazard



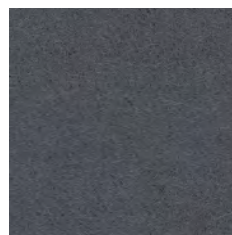
Hero 2 102



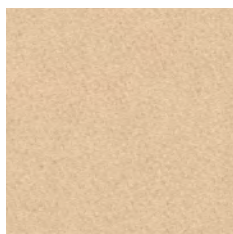
Hero 2 152



Hero 2 162



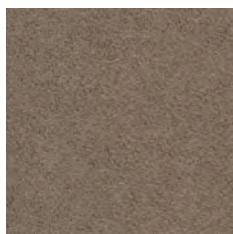
Hero 2 182



Hero 2 202



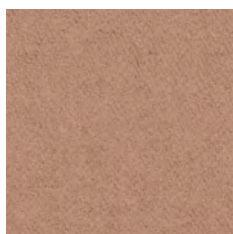
Hero 2 212



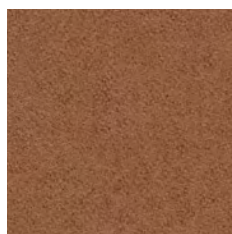
Hero 2 242



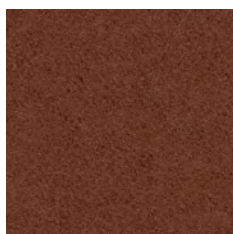
Hero 2 192



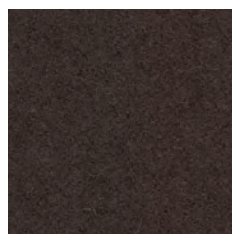
Hero 2 312



Hero 2 352



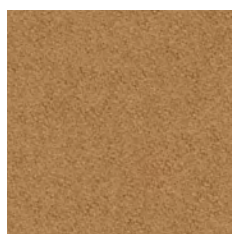
Hero 2 372



Hero 2 392



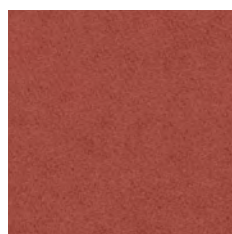
Hero 2 422



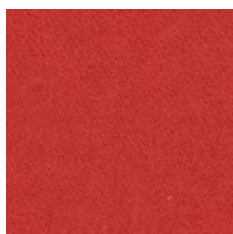
Hero 2 432



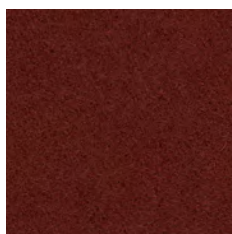
Hero 2 512



Hero 2 542



Hero 2 552



Hero 2 582



Hero 2 622



Hero 2 652

(1) Low Hazard, (2) Medium Hazard



Hero 2 662



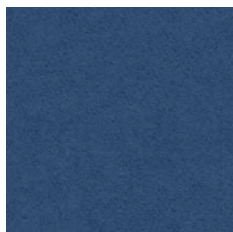
Hero 2 672



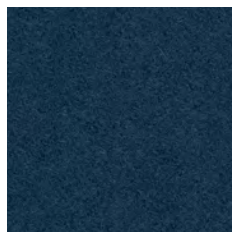
Hero 2 732



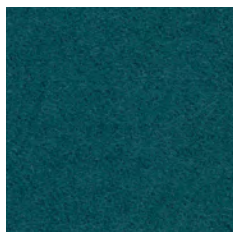
Hero 2 742



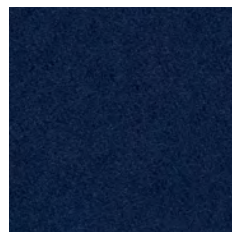
Hero 2 752



Hero 2 772



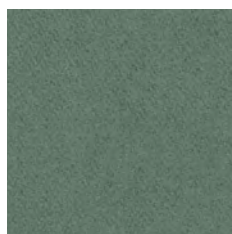
Hero 2 862



Hero 2 782



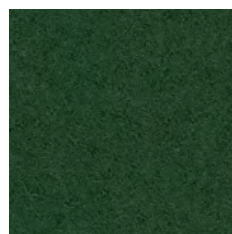
Hero 2 912



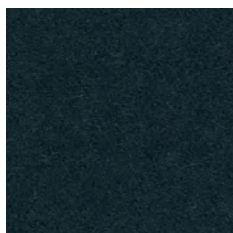
Hero 2 932



Hero 2 942



Hero 2 962

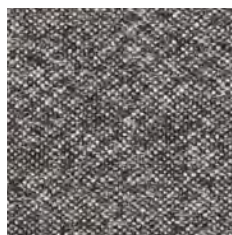


Hero 2 882

(1) Low Hazard, (2) Medium Hazard



Melange Nap 111



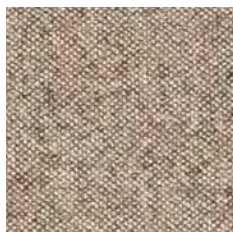
Melange Nap 171



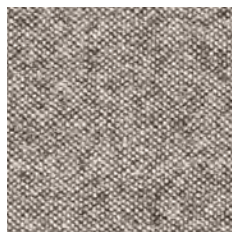
Melange Nap 191



Melange Nap 211



Melange Nap 221



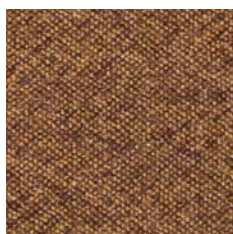
Melange Nap 241



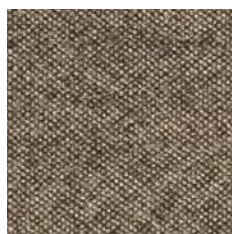
Melange Nap 271



Melange Nap 321



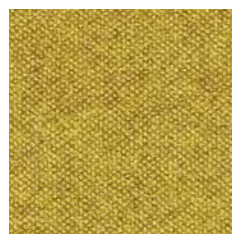
Melange Nap 351



Melange Nap 371



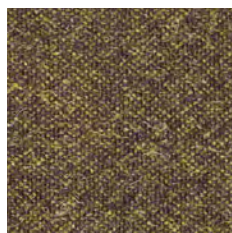
Melange Nap 411



Melange Nap 441



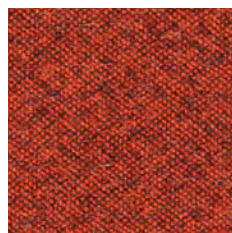
Melange Nap 461



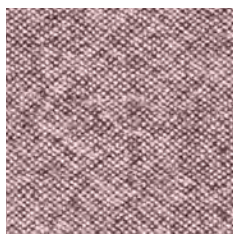
Melange Nap 491



Melange Nap 521



Melange Nap 551



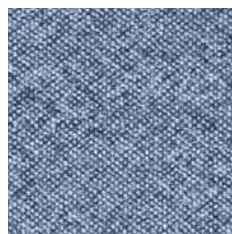
Melange Nap 651



Melange Nap 691



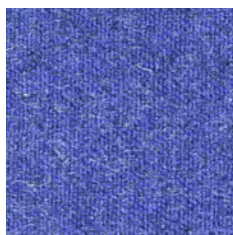
Melange Nap 711



Melange Nap 751

(1) Low Hazard, (2) Medium Hazard

KVADRAT MELANGE NAP (1)



Melange Nap 771



Melange Nap 791



Melange Nap 871



Melange Nap 911

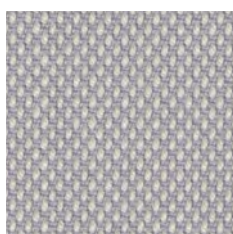


Melange Nap 951

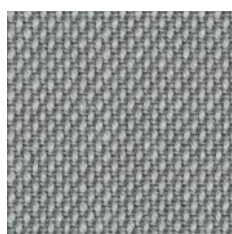


Melange Nap 991

KVADRAT STEELCUT TRIO 3 (1)



Steelcut Trio 3 105



Steelcut Trio 3 113



Steelcut Trio 3 124



Steelcut Trio 3 133



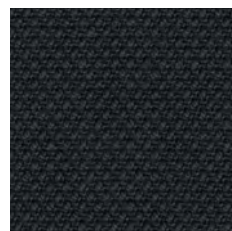
Steelcut Trio 3 246



Steelcut Trio 3 153



Steelcut Trio 3 176



Steelcut Trio 3 195

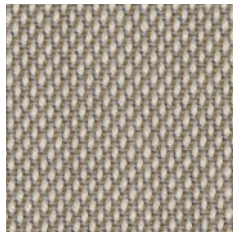
(1) Low Hazard, (2) Medium Hazard



Steelcut Trio 3 226



Steelcut Trio 3 205



Steelcut Trio 3 213

FAST TRACK



Steelcut Trio 3 253



Steelcut Trio 3 236



Steelcut Trio 3 266



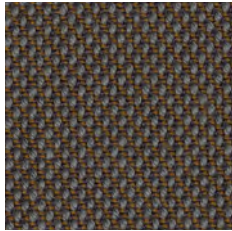
Steelcut Trio 3 276



Steelcut Trio 3 283



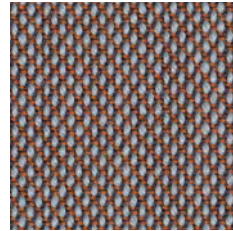
Steelcut Trio 3 336



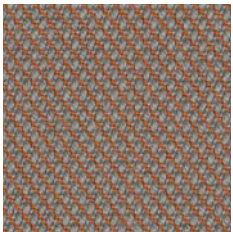
Steelcut Trio 3 376



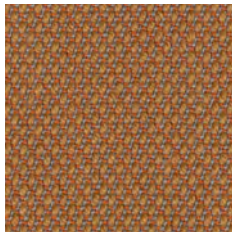
Steelcut Trio 3 383



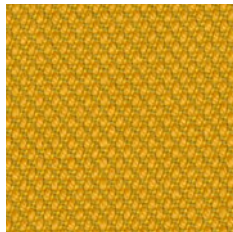
Steelcut Trio 3 416



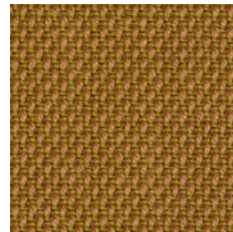
Steelcut Trio 3 426



Steelcut Trio 3 436



Steelcut Trio 3 446

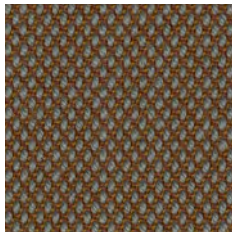


Steelcut Trio 3 466

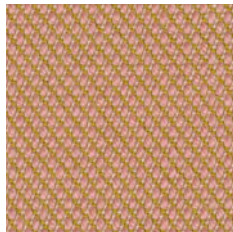


Steelcut Trio 3 453

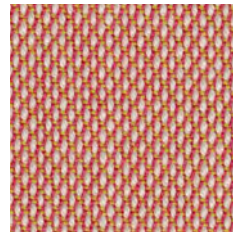
FAST TRACK



Steelcut Trio 3 476

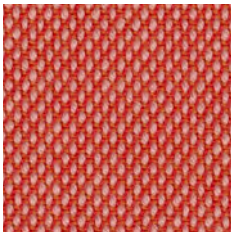


Steelcut Trio 3 506

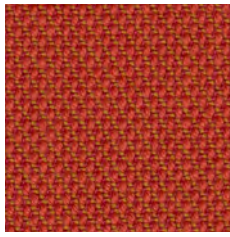


Steelcut Trio 3 515

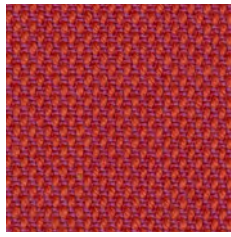
(1) Low Hazard, (2) Medium Hazard



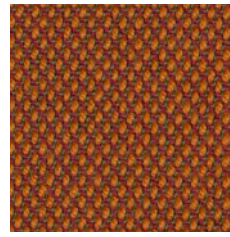
Steelcut Trio 3 526



Steelcut Trio 3 533



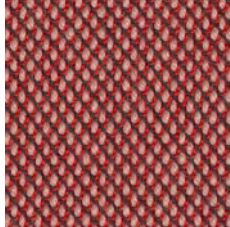
Steelcut Trio 3 553



Steelcut Trio 3 576



Steelcut Trio 3 616



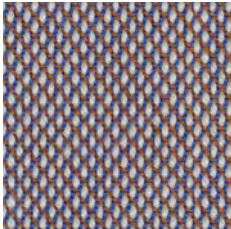
Steelcut Trio 3 636



Steelcut Trio 3 686



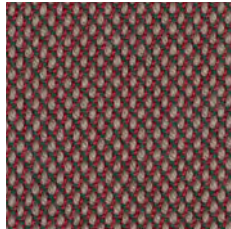
Steelcut Trio 3 756



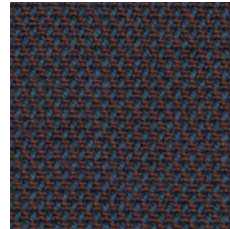
Steelcut Trio 3 806



Steelcut Trio 3 666



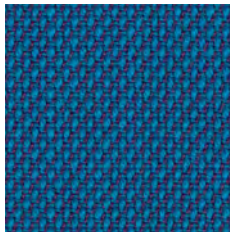
Steelcut Trio 3 645



Steelcut Trio 3 776



Steelcut Trio 3 716

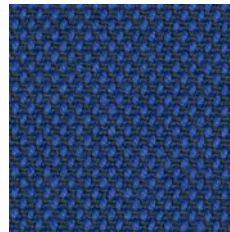


Steelcut Trio 3 865



Steelcut Trio 3 713

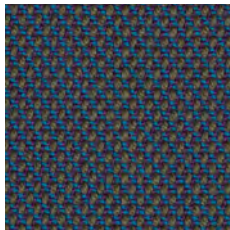
FAST TRACK



Steelcut Trio 3 746

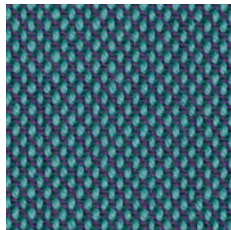


Steelcut Trio 3 906



Steelcut Trio 3 883

FAST TRACK



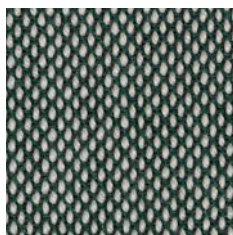
Steelcut Trio 3 983



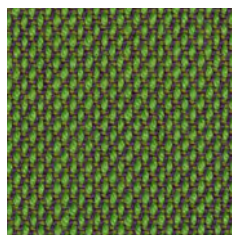
Steelcut Trio 3 796

(1) Low Hazard, (2) Medium Hazard

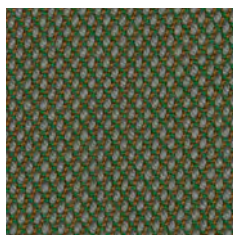
KVADRAT STEELCUT TRIO 3 (1)



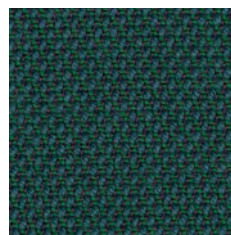
Steelcut Trio 3 916



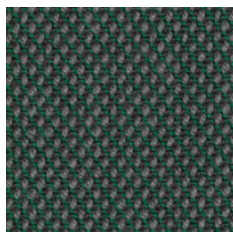
Steelcut Trio 3 953



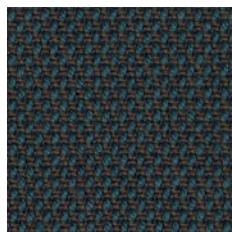
Steelcut Trio 3 946



Steelcut Trio 3 976



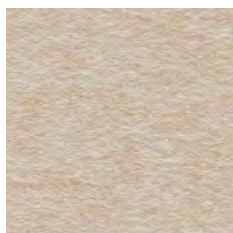
Steelcut Trio 3 966



Steelcut Trio 3 996

GROUP 4

KVADRAT DIVINA MD (1)



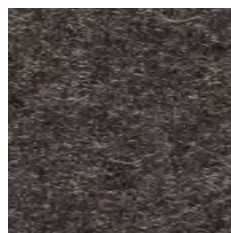
Divina MD 203



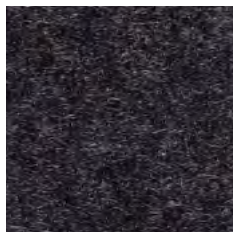
Divina MD 213



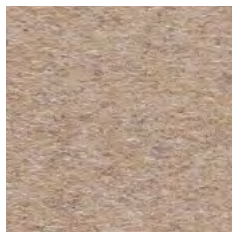
Divina MD 343



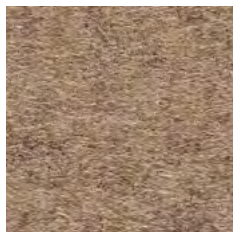
Divina MD 353



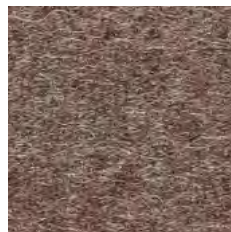
Divina MD 293



Divina MD 413



Divina MD 453



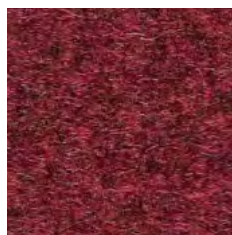
Divina MD 363

GROUP 5

(1) Low Hazard, (2) Medium Hazard



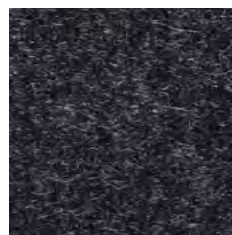
Divina MD 613



Divina MD 633



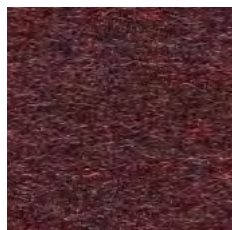
Divina MD 433



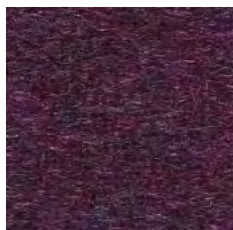
Divina MD 193



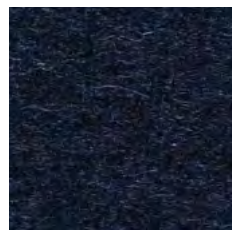
Divina MD 653



Divina MD 673



Divina MD 683



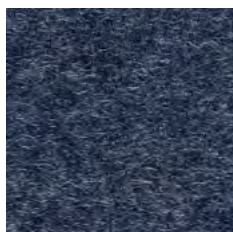
Divina MD 783



Divina MD 713



Divina MD 733



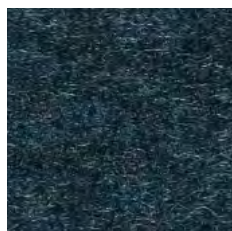
Divina MD 743



Divina MD 753



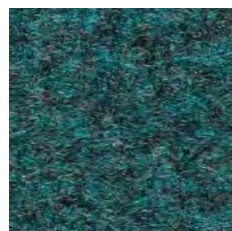
Divina MD 773



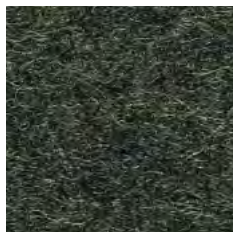
Divina MD 873



Divina MD 813



Divina MD 843



Divina MD 973



Divina MD 913

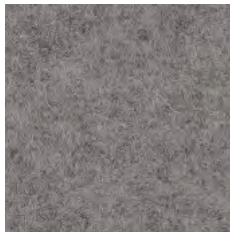


Divina MD 943

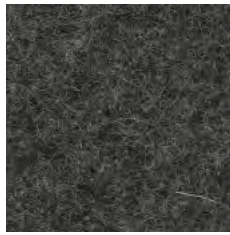
(1) Low Hazard, (2) Medium Hazard



Divina Melange 3 120



Divina Melange 3 147



Divina Melange 3 170



Divina Melange 3 180



Divina Melange 3 687

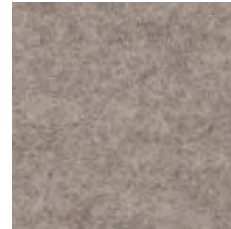


Divina Melange 3 237

FAST TRACK



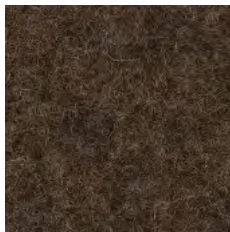
Divina Melange 3 260



Divina Melange 3 227



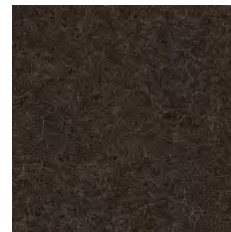
Divina Melange 3 517



Divina Melange 3 367



Divina Melange 3 277



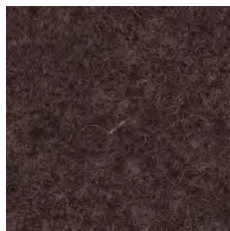
Divina Melange 3 280



Divina Melange 3 547



Divina Melange 3 581



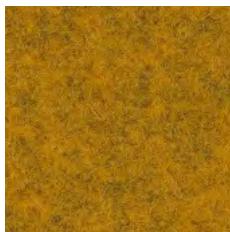
Divina Melange 3 677



Divina Melange 3 597

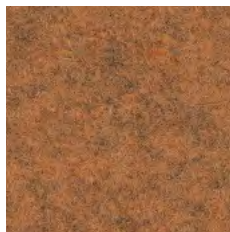


Divina Melange 3 427



Divina Melange 3 457

FAST TRACK



Divina Melange 3 527

FAST TRACK



Divina Melange 3 571

(1) Low Hazard, (2) Medium Hazard



Divina Melange 3 557



Divina Melange 3 567



Divina Melange 3 617

FAST TRACK



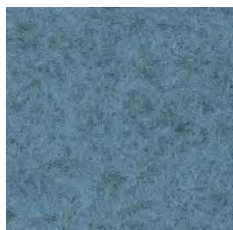
Divina Melange 3 620



Divina Melange 3 647



Divina Melange 3 747



Divina Melange 3 731



Divina Melange 3 787



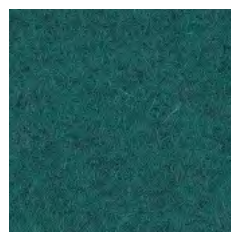
Divina Melange 3 757



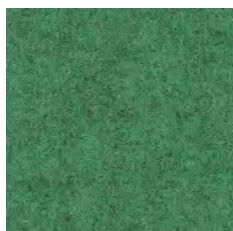
Divina Melange 3 777



Divina Melange 3 917



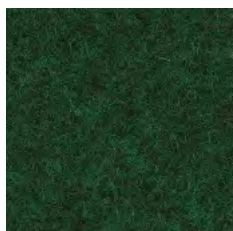
Divina Melange 3 821



Divina Melange 3 937



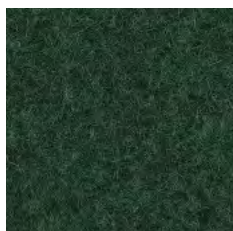
Divina Melange 3 467



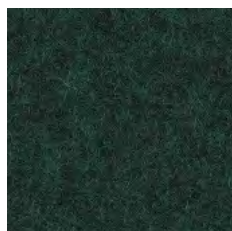
Divina Melange 3 977



Divina Melange 3 471



Divina Melange 3 967

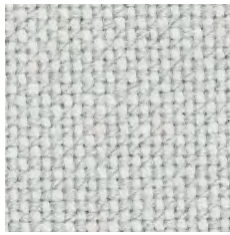


Divina Melange 3 871

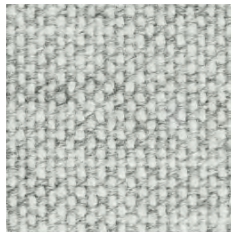
(1) Low Hazard, (2) Medium Hazard



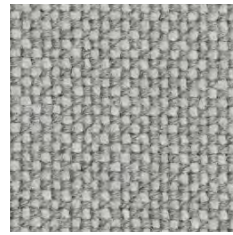
Hallingdal 65 100



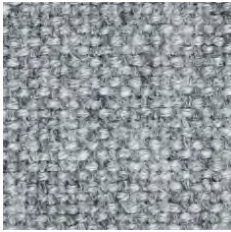
Hallingdal 65 103



Hallingdal 65 110

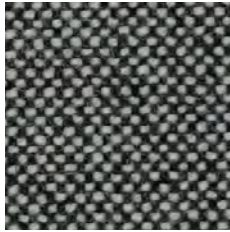


Hallingdal 65 123

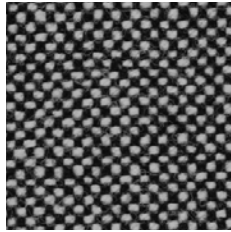


Hallingdal 65 130

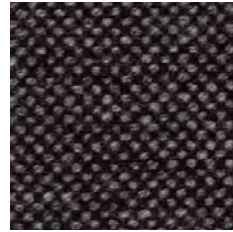
FASTTRACK



Hallingdal 65 126



Hallingdal 65 166



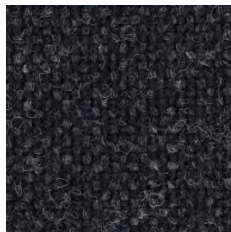
Hallingdal 65 368



Hallingdal 65 200

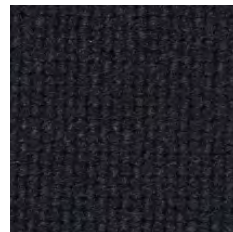


Hallingdal 65 113

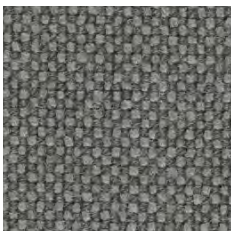


Hallingdal 65 180

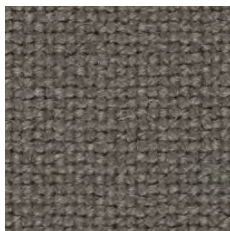
FASTTRACK



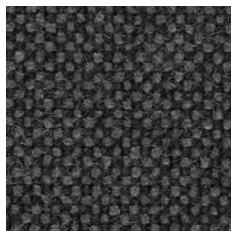
Hallingdal 65 190



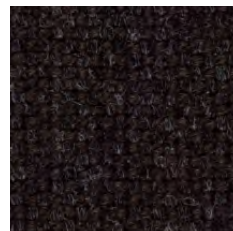
Hallingdal 65 153



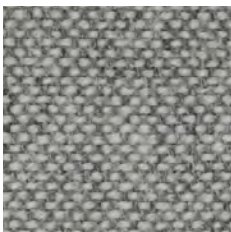
Hallingdal 65 143



Hallingdal 65 173



Hallingdal 65 376



Hallingdal 65 116



Hallingdal 65 220

FASTTRACK



Hallingdal 65 224



Hallingdal 65 227

(1) Low Hazard, (2) Medium Hazard



Hallingdal 65 270



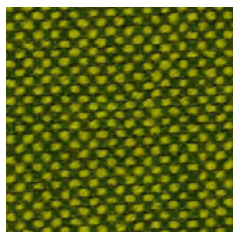
Hallingdal 65 390



Hallingdal 65 350



Hallingdal 65 370



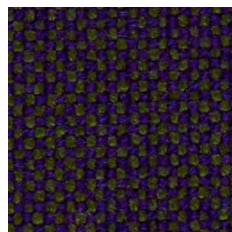
Hallingdal 65 980



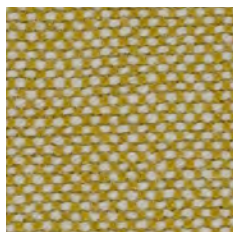
Hallingdal 65 944



Hallingdal 65 960

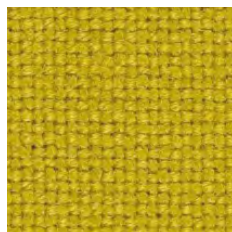


Hallingdal 65 968

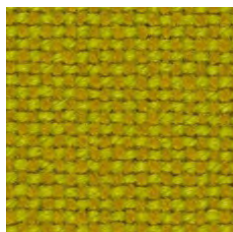


Hallingdal 65 407

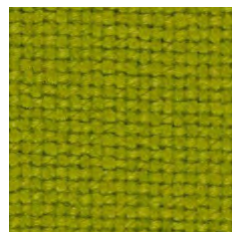
FASTTRACK



Hallingdal 65 457



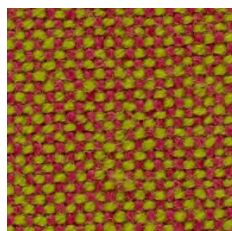
Hallingdal 65 420



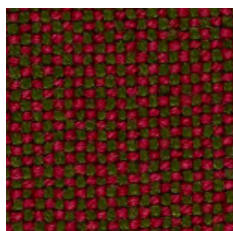
Hallingdal 65 907



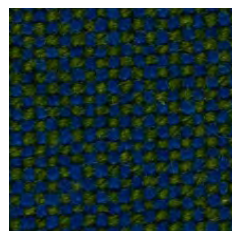
Hallingdal 65 547



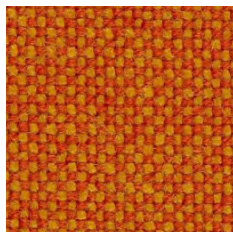
Hallingdal 65 526



Hallingdal 65 660



Hallingdal 65 890



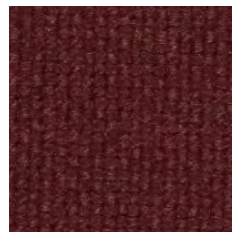
Hallingdal 65 590



Hallingdal 65 600



Hallingdal 65 687



Hallingdal 65 694

(1) Low Hazard, (2) Medium Hazard



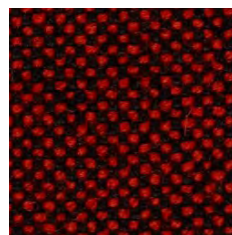
Hallingdal 65 680



Hallingdal 65 674



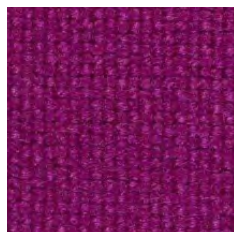
Hallingdal 65 657



Hallingdal 65 596



Hallingdal 65 573



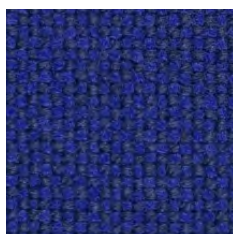
Hallingdal 65 563



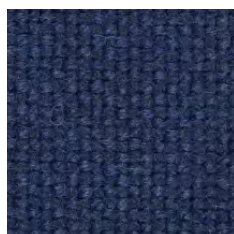
Hallingdal 65 763



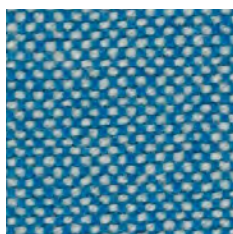
Hallingdal 65 702



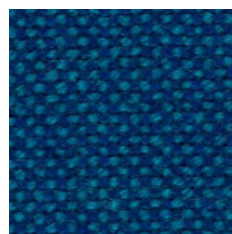
Hallingdal 65 773



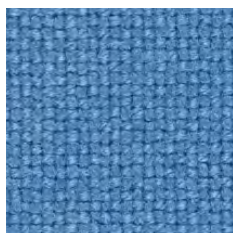
Hallingdal 65 764



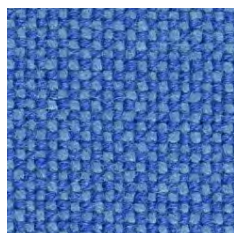
Hallingdal 65 840



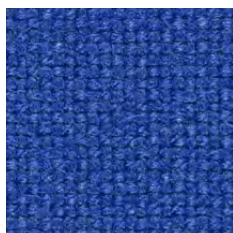
Hallingdal 65 810



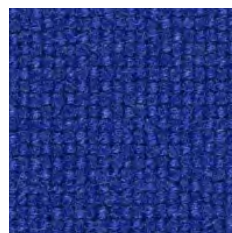
Hallingdal 65 723



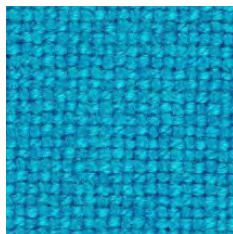
Hallingdal 65 733



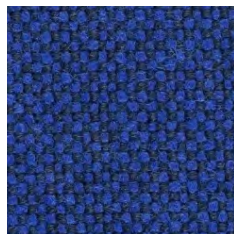
Hallingdal 65 750



Hallingdal 65 753



Hallingdal 65 850



Hallingdal 65 754

(1) Low Hazard, (2) Medium Hazard



Leather 179



Leather 129



Leather 149



Leather 136



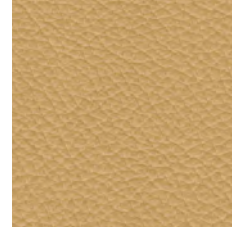
Leather 102



Leather 126



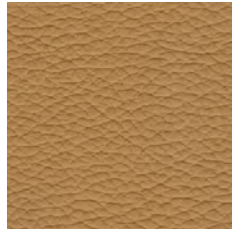
Leather 131



Leather 139



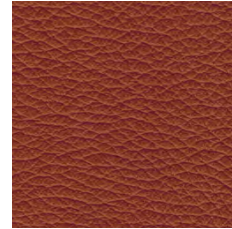
Leather 122



Leather 123



Leather 142



Leather 117



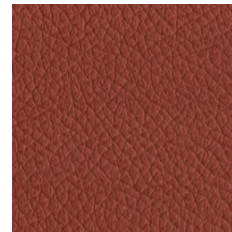
Leather 127



Leather 116



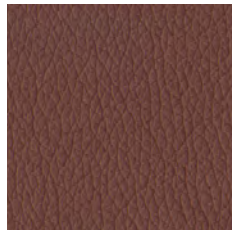
Leather 133



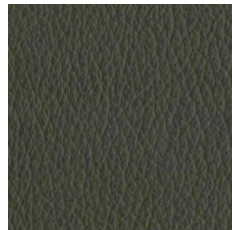
Leather 141



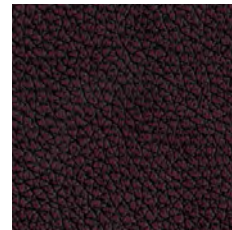
Leather 115



Leather 197



Leather 109



Leather 160

(1) Low Hazard, (2) Medium Hazard



Leather 145



Leather 111



Leather 137



Leather 147



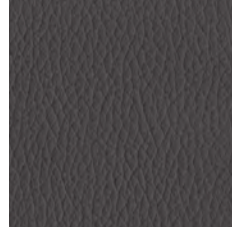
Leather 113



Leather 128



Leather 121



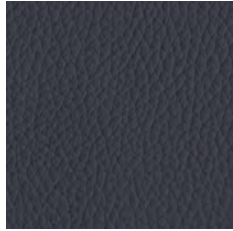
Leather 101



Leather 125



Leather 148



Leather 114



Leather 103

(1) Low Hazard, (2) Medium Hazard

GROUP 1

Fabric	ATLANTIC	CITADEL	CURA	ERA	FELICITY	TONAL	URBAN	VALENCIA
Group	G1	G1	G1	G1	G1	G1	G1	G1
Material	100% Polyester	100% Flame Retardant Polyurethane	98% post-consumer recycled polyester 2% polyester	100% Polyester	100% Post-consumer recycled polyester	99% Post-consumer recycled polyester 1% Polyester	100% Post-consumer recycled polyester	79,8% PVC + additives 20,2% Polyester
Weight g/m2	353	230	300	320	307	225	340	650
Abrasion Martindale (supplier's data)	110.000	30.000	100.000	100.000	90.000	100.000	100.000	300.000
Fire resistance	BS 7176 Low Hazard	BS 7176 Low Hazard	BS 7176 Low Hazard	BS 7176 Low Hazard	BS 7176 Low Hazard	BS 7176 Low Hazard	BS 7176 Low + Medium Hazard	BS 7176 Low Hazard
Environmental certificates	OEKO-TEX EU Ecolabel Meets Möbelfakta requirements Contribution to LEED / WELL credits		OEKO-TEX EU Ecolabel Meets Möbelfakta requirements	OEKO-TEX Indoor Advantage Gold	OEKO-TEX EU Ecolabel Cradle to Cradle Certified® Bronze Meets Möbelfakta requirements Contribution to LEED / WELL credits	OEKO-TEX EU Ecolabel Contribution to LEED / WELL credits	OEKO-TEX EU Ecolabel	

GROUP 2

Fabric	FUSION	MAIN LINE FLAX	MEDLEY	REMIX 3	STEP	STEP MELANGE
Group	G2	G2	G2	G2	G2	G2
Material	32% WO 28% PES REC 23% PP 11% CO REC 4% OF	75% Virgin Wool 25% Flax	100% Polyester	90% New wool, worsted 10% Nylon	100% Trevira CS	100% Trevira CS
Weight g/m2	535	437	364	300	336	336
Abrasion Martindale (supplier's data)	62.000	50.000	75.000	100.000	100.000	100.000
Fire resistance	BS 7176 Low Hazard	BS 7176 Low + Medium Hazard	BS 7176 Low Hazard	BS 7176 Low Hazard	BS 7176 Low + Medium Hazard	BS 7176 Low + Medium Hazard
Environmental certificates		EU Ecolabel Indoor Advantage Gold	OEKO-TEX Contribution to LEED / WELL credits	EU Ecolabel	OEKO-TEX EU Ecolabel Meets Möbelfakta requirements Contribution to LEED / WELL credits	OEKO-TEX EU Ecolabel Meets Möbelfakta requirements Contribution to LEED / WELL credits

GROUP 3

Fabric	ARC	BLAZER	BORA BORA	CANVAS 2	FAME	FAME-HYBRID	GAJA 2C2	MAPLE
Group	G3	G3	G3	G3	G3	G3	G3	G3
Material	52% Low environmental impact (PP) 27% WO 21% Recycled PET GRS bottles	100% Virgin wool	82% PP 18% PES	90% New wool, worsted 10% Nylon	95% New Zealand wool 5% Polyamide	95% New Zealand wool 5% Polyamide	100% New Zealand wool	81% Viscose 15% Linen 4% Polyester
Weight g/m2	679	460	750	343	450	450	379	650
Abrasion Martindale (supplier's data)	50.000	50.000	100.000	100.000	200.000	150.000	50.000	30.000
Fire resistance	BS 7176 Low Hazard	BS 7176 Low Hazard	BS 7176 Low Hazard	BS 7176 Low Hazard	BS 7176 Low + Medium Hazard	BS 7176 Low Hazard	BS 7176 Low Hazard	BS 7176 Low Hazard
Environmental certificates		Indoor Advantage Gold		EU Ecolabel	OEKO-TEX EU Ecolabel Meets Möbelfakta requirements Contribution to LEED / WELL credits	OEKO-TEX EU Ecolabel Contribution to LEED / WELL credits	OEKO-TEX EU Ecolabel Cradle to Cradle Certified® Silver Contribution to LEED / WELL credits	

GROUP 4

Fabric	CAPTURE	CRISP	FIORD 2	HERO 2	MELANGE NAP	STEELCUT TRIO 3
Group	G4	G4	G4	G4	G4	G4
Material	85% New Zealand wool 15% Polyamide	93% New Zealand wool 7% Polyamide	92% New wool, worsted 8% Nylon	97% New wool 3% Recycled nylon	97% New wool, worsted 3% Nylon	90% New wool, worsted 10% Nylon
Weight g/m2	339	329	357	414	314	550
Abrasion Martindale (supplier's data)	200.000	200.000	60.000	45.000	60.000	100.000
Fire resistance	BS 7176 Low Hazard	BS 7176 Low Hazard	BS 7176 Low Hazard	BS 7176 Low Hazard	BS 7176 Low Hazard	BS 7176 Low Hazard
Environmental certificates	OEKO-TEX EU Ecolabel Meets Möbelfakta requirements Contribution to LEED / WELL credits	OEKO-TEX EU Ecolabel Meets Möbelfakta requirements Contribution to LEED / WELL credits	EU Ecolabel	EU Ecolabel	EU Ecolabel	EU Ecolabel

GROUP 5

Fabric	DIVINA MD	DIVINA MELANGE 3	HALLINGDAL 65	LEATHER
Group	G5	G5	G5	G5
Material	100% New wool	100% New wool	70% New wool 30% Viscose	100% European cow leather
Weight g/m2	560	560	612	850
Abrasion Martindale (supplier's data)	45.000	45.000	100.000	
Fire resistance	BS 7176 Low Hazard	BS 7176 Low Hazard	BS 7176 Low + Medium Hazard	BS 7176 Low Hazard
Environmental certificates	EU Ecolabel	EU Ecolabel	EU Ecolabel	