

**viccarbe**

# Finishes

---

COLOR RANGE - LACQUERED WOODS

---



Ochre | RAL 1011



Brick | RAL 050 50 30



Taupe | RAL 1019



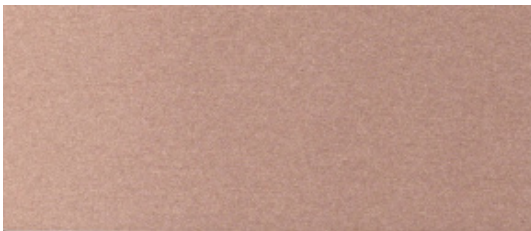
Military Green | RAL 090 40 30



Dusty Pink | RAL 060 70 20



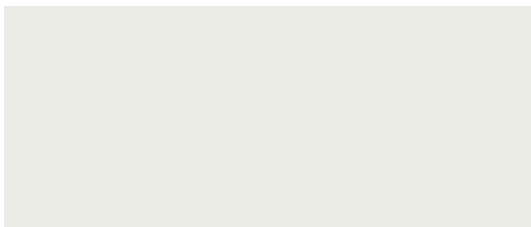
Dusty Green | RAL 7034



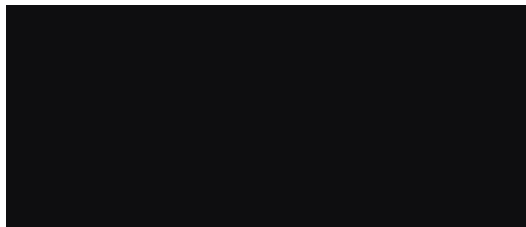
Bronze



Orange Fluor\* | RAL 2005



White | RAL 9003



Black | RAL 9005

**STAINED WOODS**

---



Matt Oak



Cognac



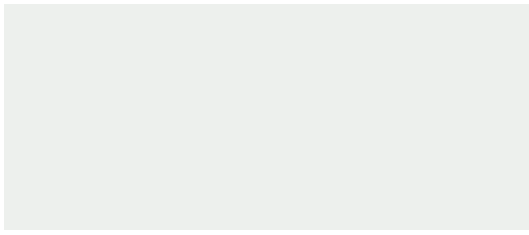
Ash



White

COLOR RANGE - POLYPROPYLENE\*

---



White | RAL 9003



Black | RAL 9005



Taupe | RAL 1019



Brick | RAL 050 50 30



Ochre | RAL 1011

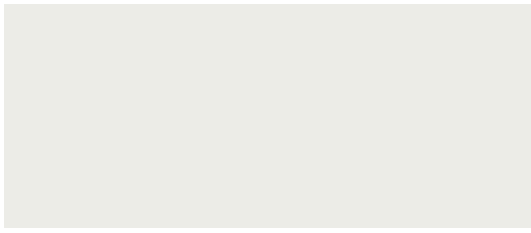


Dusty Green | RAL 7034

*\*Only available for  
Maarten Plastic*

**COLOR RANGE - METAL FINISHES\***

---



White | RAL 9003



Black | RAL 9005



Taupe | RAL 1019



Orange Fluor\* | RAL 2005



Brass

*\*Please check on the Price List the colors and textures available for each product.*

**TABLE TOPS\***



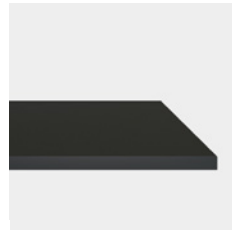
MDF with HPL,  
Stained Edge, White Top



MDF with HPL,  
Stained Edge, Black Top



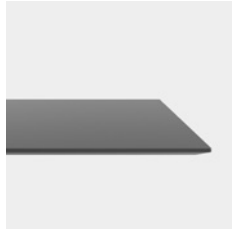
Low Pressure Laminate,  
White Edge, White Top



Low Pressure Laminate,  
Black Edge, Black Top



Compact Laminate,  
White Edge, White Top



Compact Laminate,  
Black Edge, Black Top



Compact Laminate,  
Black Edge, Black Top

*\* The thickness of these pictures may not correspond with the specific thickness of each table top (wich depends on the model)*