



Upholstery Program
2021

MENU Upholstery Programme

The MENU Upholstery Program is an overview of the textile and leathers available for MENU upholstered furniture. All textile and leather options are available in all colors. You'll find over 100 fabric and leather options, with the most popular configurations available with expedited delivery in our Quick Ship program.

Custom upholstery orders from our MENU Upholstery Program (SPEC) are ready to ship with standard delivery lead times. Our Fixed Combinations listed in this Brand Book are suggested upholsteries selected by our design team, and deliver with standard lead times. We are happy to upholster furniture using customer's own materials (COM) with extended delivery lead times, upon fabric approval.

Please note that the color references in this upholstery programme are only intended as a guide. For further information please see manufacturer websites, or contact your local MENU Sales Representative for samples or further information.

kvadrat.dk
sacho.com
nevotex.com
gabriel.dk
jab.de
dedar.com
astrid.se



Upholstery Selection & Furniture

Use table to determine the upholstery options available for fabric-covered items.

	AFTERROOM	AFTERROOM PLUS	EAVE	GODOT	HARBOUR	OFFSET	TAILOR	CO CHAIR	TEAROOM	KNITTING CHAIR
TEXTILE										
PRICE CATEGORY 1										
Remix 3, Kvadrat	•	•	•	•	•	•	•	•	•	•
Maple, Kvadrat	•	•	•		•	•	•	•	•	•
Hot Madison Reboot , JAB	•	•	•	•	•	•	•	•	•	•
Champion, JAB	•	•	•	•	•	•	•	•	•	•
PRICE CATEGORY 2										
Fiord 2, Kvadrat	•	•	•	•	•	•	•	•	•	•
Canvas, Kvadrat	•	•	•	•	•	•	•	•	•	•
Colline 2, Kvadrat	•	•	•	•	•	•	•	•	•	•
Hallingdal 65, Kvadrat	•	•	•	•	•	•	•	•	•	•
Savanna, Kvadrat	•	•	•		•	•	•	•	•	•
Steelcut 2, Kvadrat	•	•	•	•	•	•	•	•	•	•
Steelcut Trio 3, Kvadrat	•	•	•	•	•	•	•	•	•	•
Clay, Sacho, Kvadrat	•	•	•	•	•	•	•	•	•	•
Moss, Sacho, Kvadrat	•	•	•	•	•	•	•	•	•	•
PRICE CATEGORY 3										
Safire, Sacho, Kvadrat	•	•	•	•	•	•	•	•	•	•

1

Textile Category 1

Remix 3

Price category 1
Manufacturer Kvadrat
Materials 90% New wool, 10% Nylon
Martindale 100.000
Lightfastness 5-7
Pilling 4



Remix 3

Price category 1
Manufacturer Kvadrat
Materials 90% New wool, 10% Nylon
Martindale 100.000
Lightfastness 5-7
Pilling 4

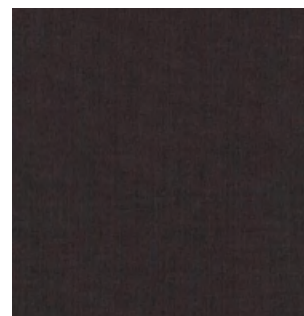
TEXTILE



Remix 3

Price category 1
Manufacturer Kvadrat
Materials 90% New wool, 10% Nylon
Martindale 100.000
Lightfastness 5-7
Pilling 4

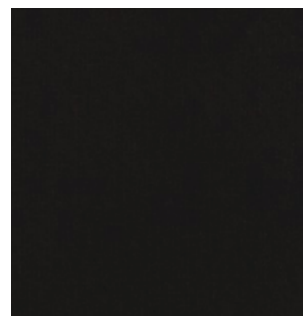
TEXTILE



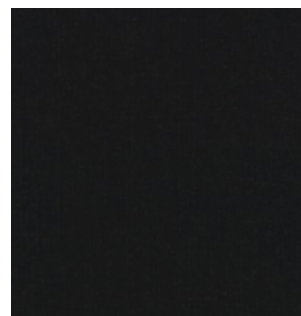
0356



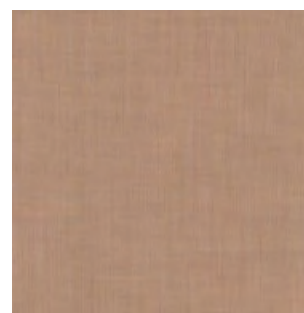
0362



0373



0383



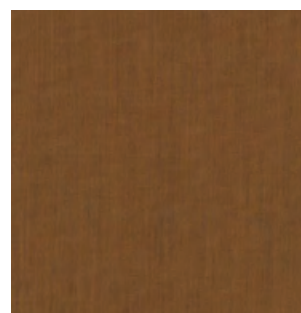
0406



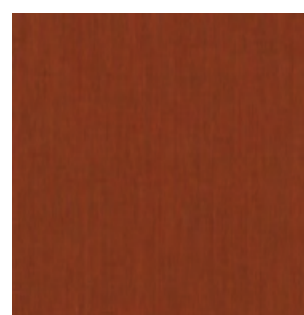
0412



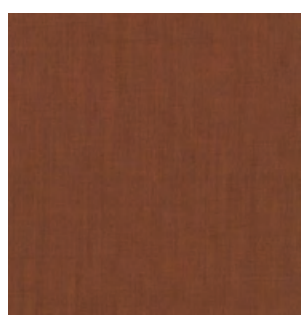
0422



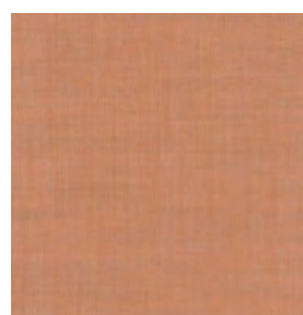
0433



0443



0452



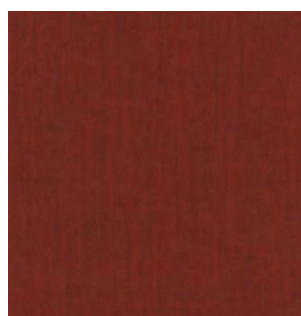
0516



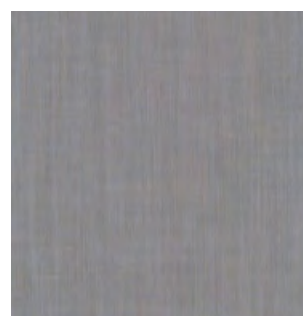
0536



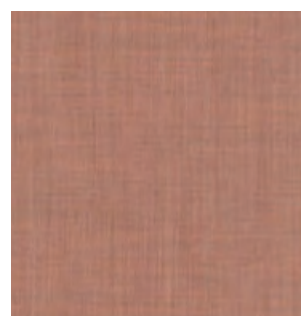
0543



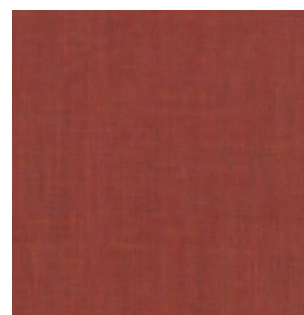
0566



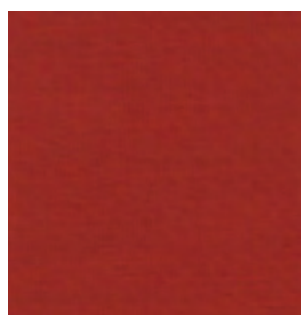
0606



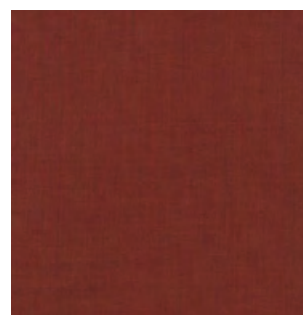
0612



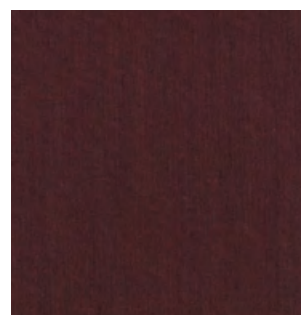
0632



0643



0653

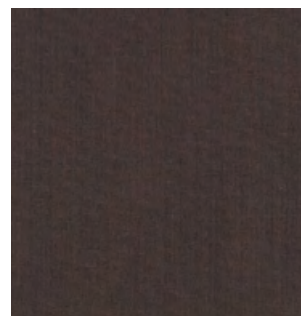


0662

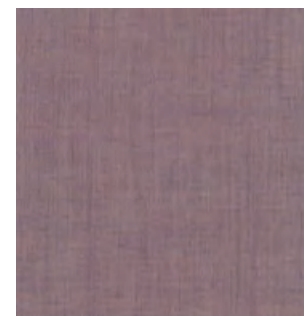
Remix 3

Price category 1
Manufacturer Kvadrat
Materials 90% New wool, 10% Nylon
Martindale 100.000
Lightfastness 5-7
Pilling 4

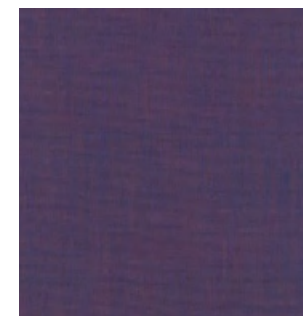
TEXTILE



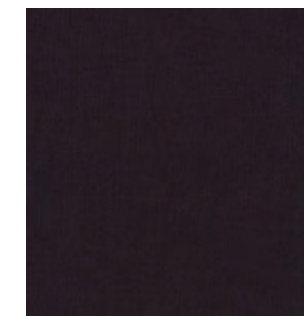
0672



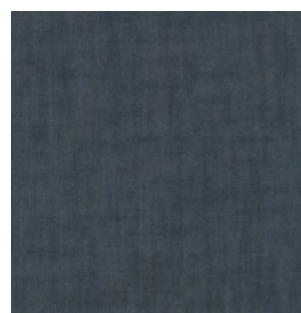
0682



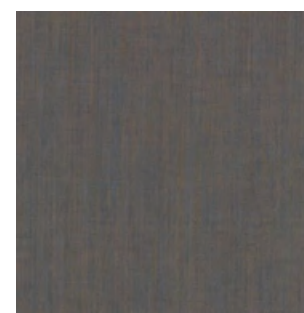
0686



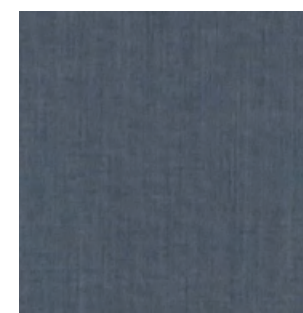
0692



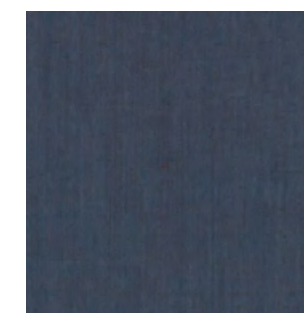
0716



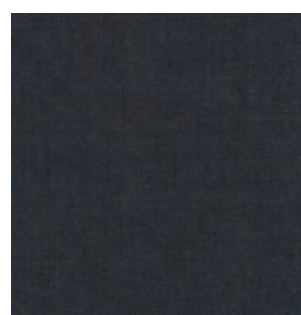
0722



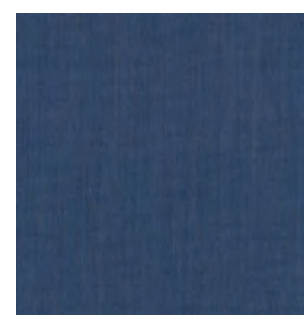
0733



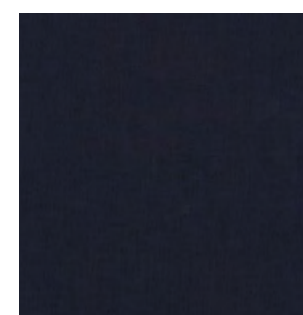
0743



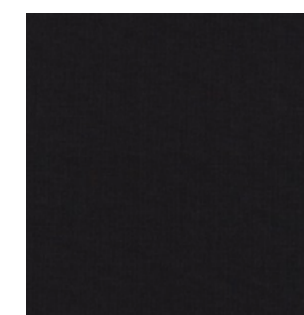
0753



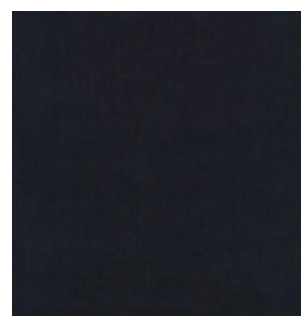
0762



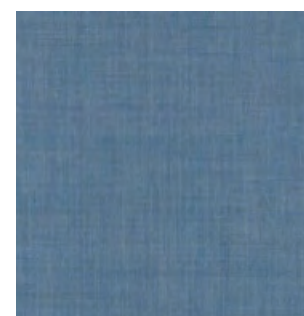
0773



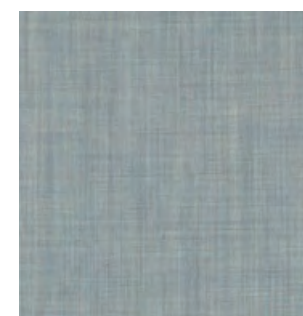
0783



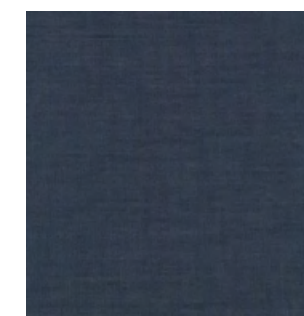
0796



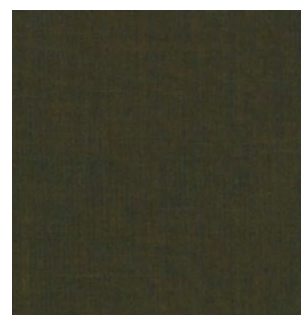
0816



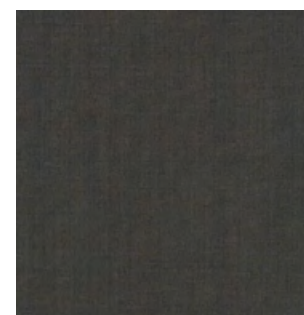
0823



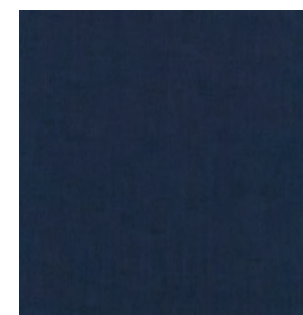
0836



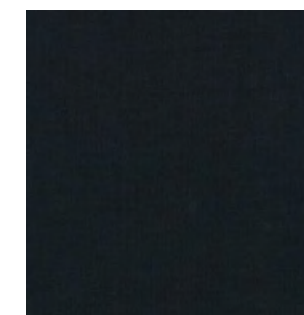
0842



0852



0866



0873

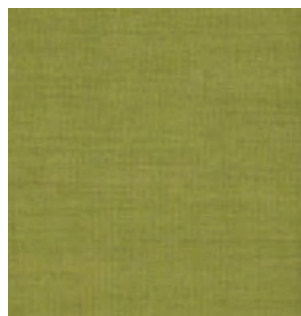
Remix 3

Price category 1
Manufacturer Kvadrat
Materials 90% New wool, 10% Nylon
Martindale 100.000
Lightfastness 5-7
Pilling 4

TEXTILE



0906



0912



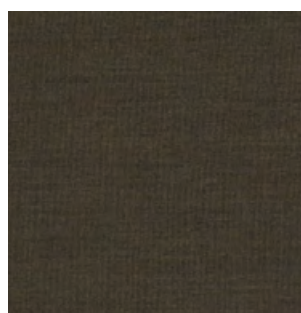
0923



0933



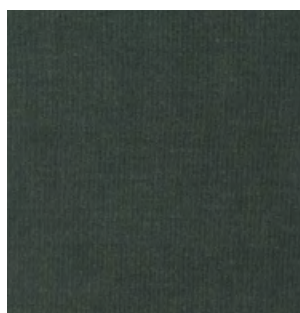
0942



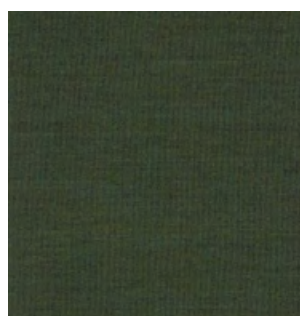
0954



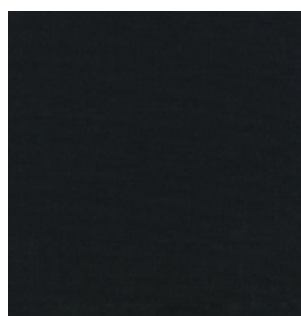
0962



0973



0982



0996

Maple

Price category 1
Manufacturer Kvadrat
Materials 81% Viscose, 15% Linen,
4% Non-woven Polyester backing
Martindale 30.000
Lightfastness 5-7
Pilling 5



Maple

TEXTILE

Price category 1
Manufacturer Kvadrat
Materials 81% Viscose, 15% Linen,
4% Non-woven Polyester backing
Martindale 30.000
Lightfastness 5-7
Pilling 5



0102



0112



0132



0142



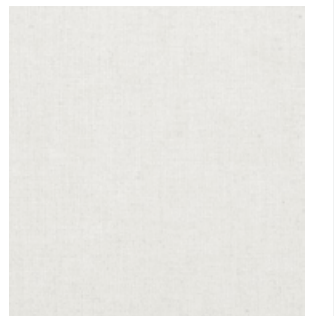
0162



0172



0192



0202



0212



0222



0232



0332



0342



0352



0362



0392



0542



0562



0662



0722

Maple

TEXTILE

Price category 1
Manufacturer Kvadrat
Materials 81% Viscose, 15% Linen,
4% Non-woven Polyester backing
Martindale 30.000
Lightfastness 5-7
Pilling 5



0732



0742



0762



0792



0832



0862

Hot Madison Reboot

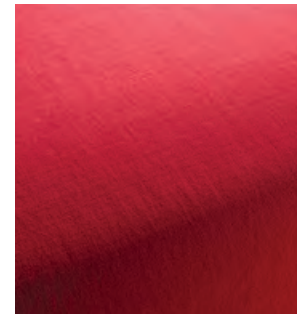
Price category 1
Manufacturer JAB
Materials 63% Cotton, 37% Linen
Martindale 55.000
Lightfastness 4-5
Pilling 4-5



Hot Madison Reboot

Price category 1
Manufacturer JAB
Materials 63% Cotton, 37% Linen
Martindale 55.000
Lightfastness 4-5
Pilling 4-5

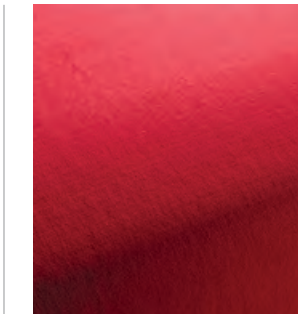
TEXTILE



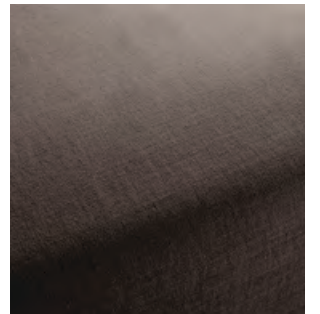
CH1249-011



CH1249-012



CH1249-013



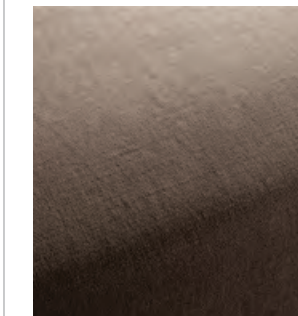
CH1249-020



CH1249-021



CH1249-022



CH1249-023



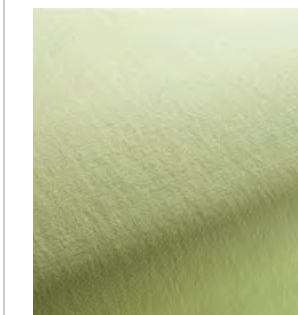
CH1249-037



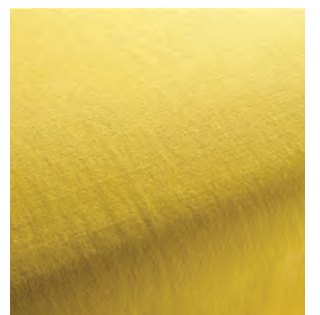
CH1249-038



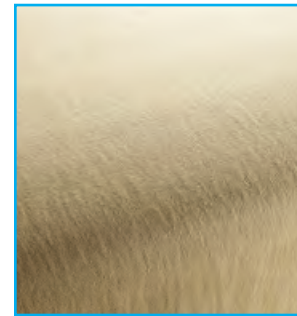
CH1249-039



CH1249-043



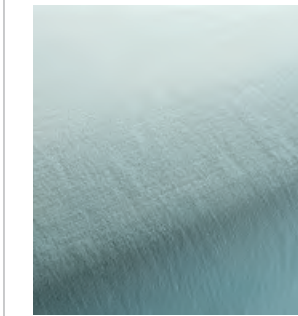
CH1249-045



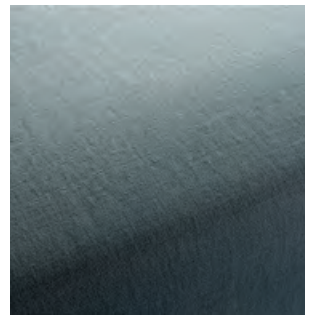
CH1249-046



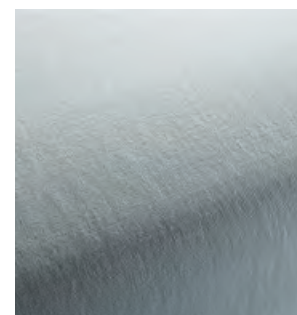
CH1249-046



CH1249-050



CH1249-052



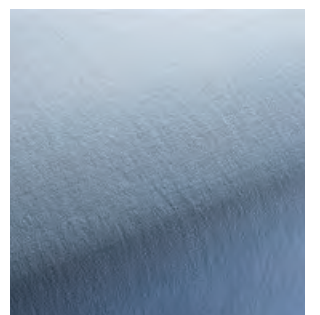
CH1249-053



CH1249-055



CH1249-056



CH1249-059

Hot Madison Reboot

Price category 1
Manufacturer JAB
Materials 63% Cotton, 37% Linen
Martindale 55.000
Lightfastness 4-5
Pilling 4-5

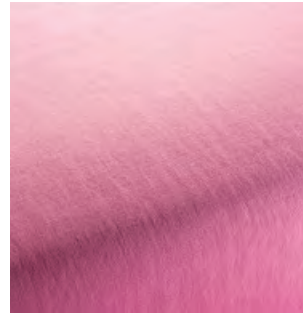
TEXTILE



CH1249-062



CH1249-063



CH1249-064



CH1249-070



CH1249-071



CH1249-072



CH1249-073



CH1249-074



CH1249-075



CH1249-076



CH1249-077



CH1249-078



CH1249-079



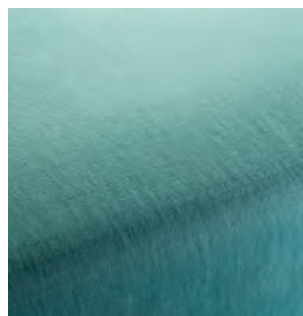
CH1249-080



CH1249-081



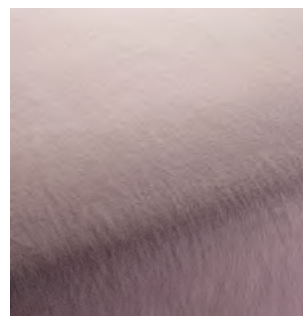
CH1249-082



CH1249-083



CH1249-084



CH1249-085



CH1249-086

Hot Madison Reboot

Price category 1
Manufacturer JAB
Materials 63% Cotton, 37% Linen
Martindale 55.000
Lightfastness 4-5
Pilling 4-5

TEXTILE



CH1249-087



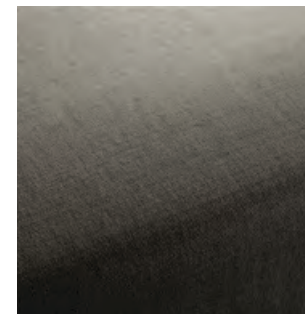
CH1249-088



CH1249-089



CH1249-091



CH1249-092



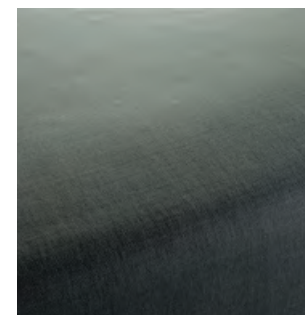
CH1249-093



CH1249-094



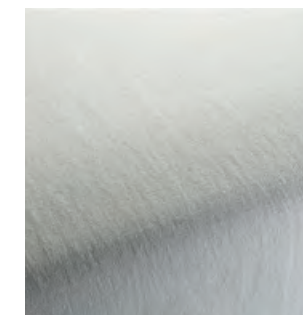
CH1249-095



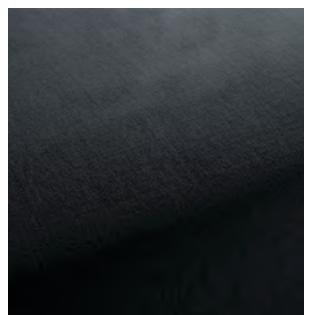
CH1249-096



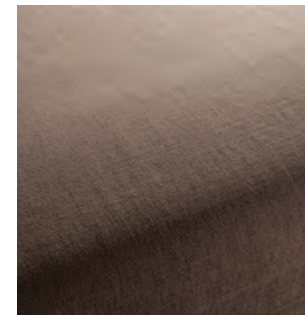
CH1249-097



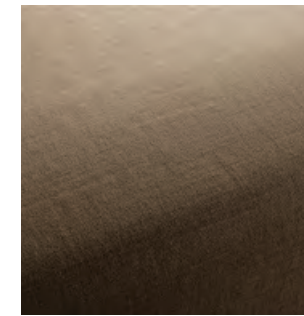
CH1249-098



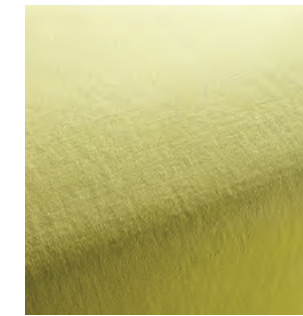
CH1249-099



CH1249-126



CH1249-127



CH1249-130



CH1249-131



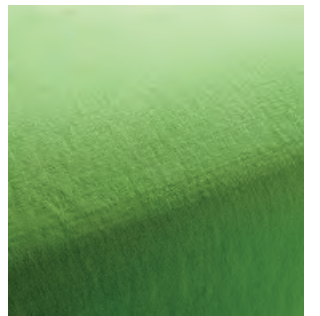
CH1249-133



CH1249-134



CH1249-135



CH1249-139

Hot Madison Reboot

Price category 1
Manufacturer JAB
Materials 63% Cotton, 37% Linen
Martindale 55.000
Lightfastness 4-5
Pilling 4-5

TEXTILE



CH1249-155



CH1249-170



CH1249-171



CH1249-172



CH1249-180



CH1249-181



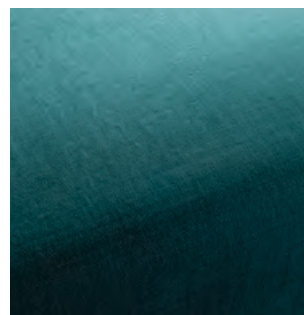
CH1249-182



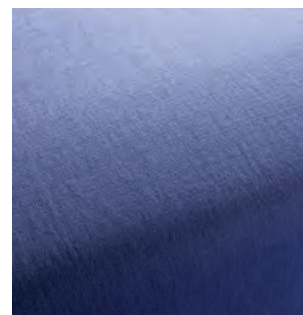
CH1249-183



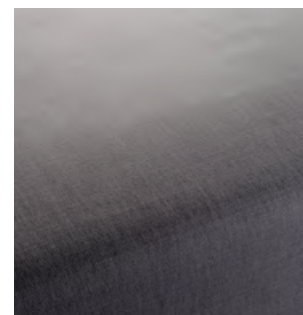
CH1249-184



CH1249-185



CH1249-186



CH1249-191



CH1249-192



CH1249-193



CH1249-194



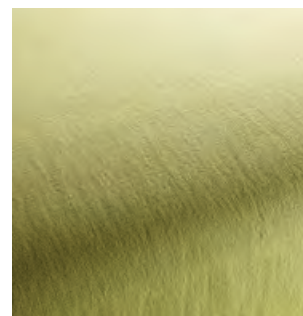
CH1249-195



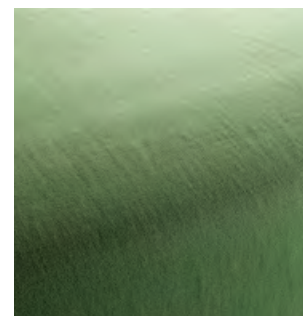
CH1249-196



CH1249-197



CH1249-230



CH1249-231

Hot Madison Reboot

Price category 1
Manufacturer JAB
Materials 63% Cotton, 37% Linen
Martindale 55.000
Lightfastness 4-5
Pilling 4-5

TEXTILE



CH1249-232



CH1249-233



CH1249-234



CH1249-245



CH1249-248



CH1249-404



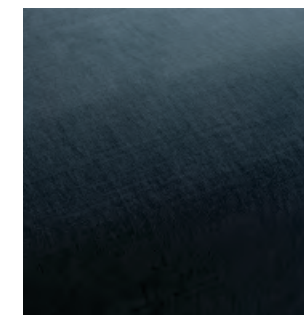
CH1249-410



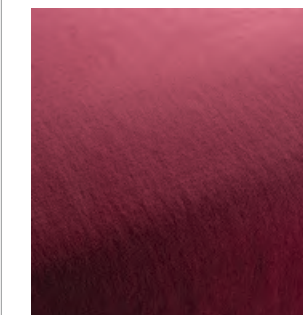
CH1249-419



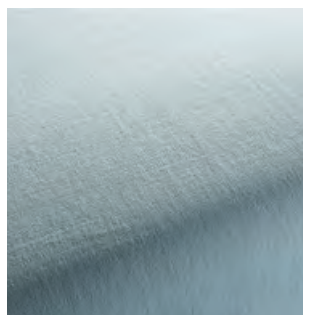
CH1249-420



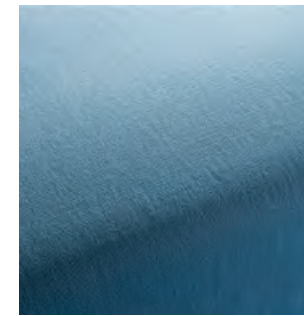
CH1249-424



CH1249-459



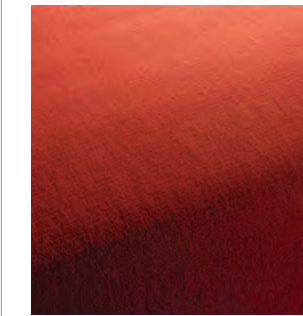
CH1249-469



CH1249-471



CH1249-476



CH1249-490



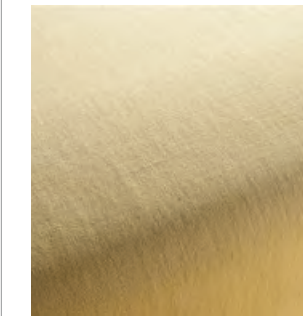
CH1249-495



CH1249-497



CH1249-499



CH1249-509

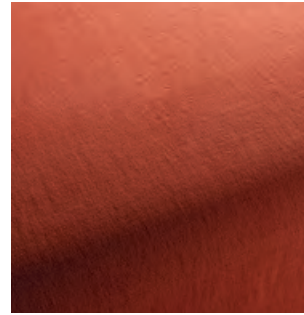


CH1249-517

Hot Madison Reboot

Price category 1
Manufacturer JAB
Materials 63% Cotton, 37% Linen
Martindale 55.000
Lightfastness 4-5
Pilling 4-5

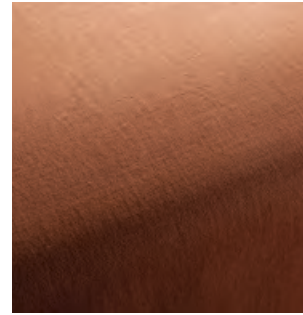
TEXTILE



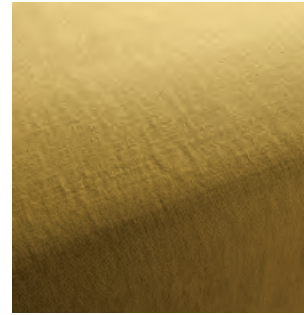
CH1249-521



CH1249-524



CH1249-525



CH1249-528



CH1249-694-



CH1249-695



CH1249-696



CH1249-697



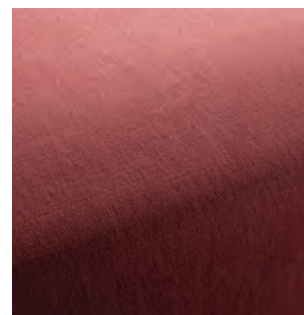
CH1249-698



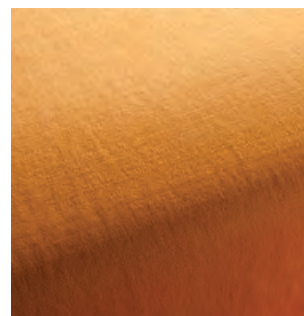
CH1249-699



CH1249-700



CH1249-701



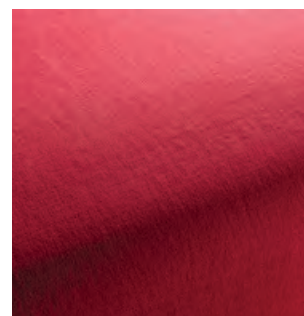
CH1249-702



CH1249-703



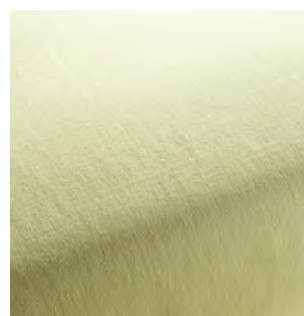
CH1249-704



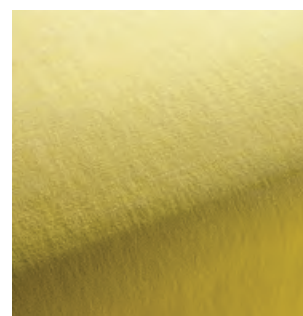
CH1249-705



CH1249-706



CH1249-707



CH1249-708

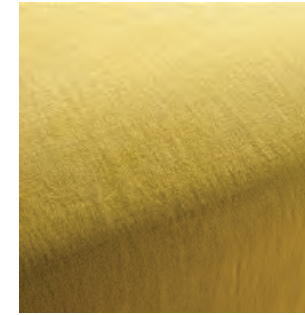


CH1249-709

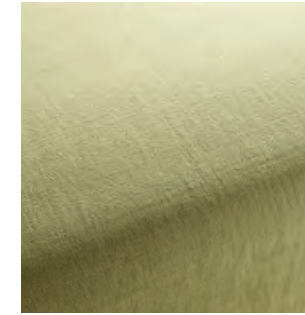
Hot Madison Reboot

Price category 1
Manufacturer JAB
Materials 63% Cotton, 37% Linen
Martindale 55.000
Lightfastness 4-5
Pilling 4-5

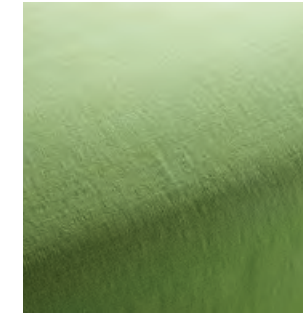
TEXTILE



CH1249-710



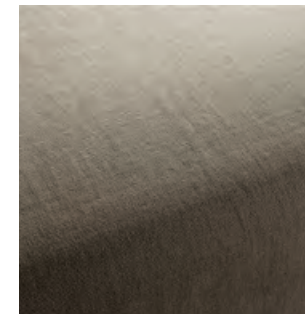
CH1249-711



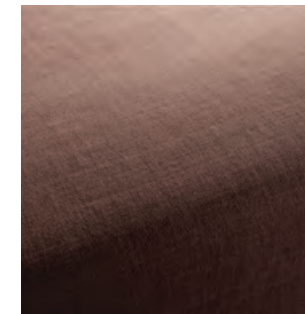
CH1249-712



CH1249-713



CH1249-714



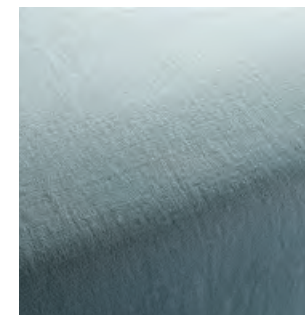
CH1249-715



CH1249-716



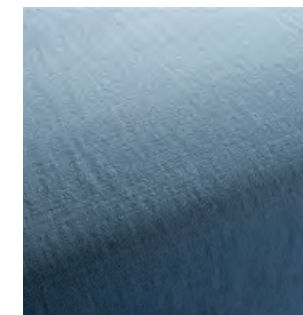
CH1249-717



CH1249-718



CH1249-719



CH1249-720



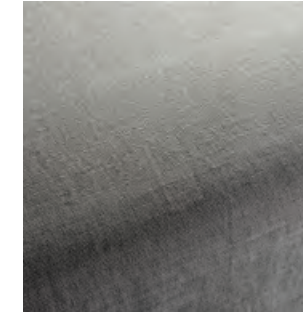
CH1249-721



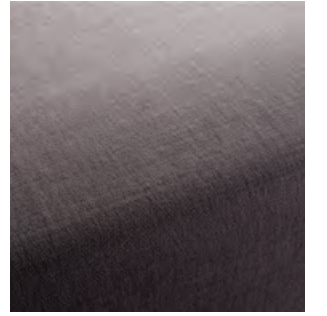
CH1249-722



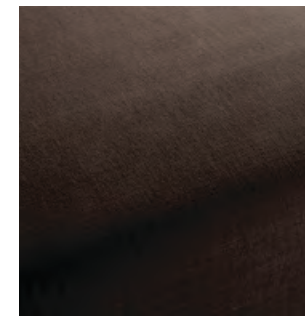
CH1249-723



CH1249-724



CH1249-725



CH1249-884



CH1249-893



CH1249-894

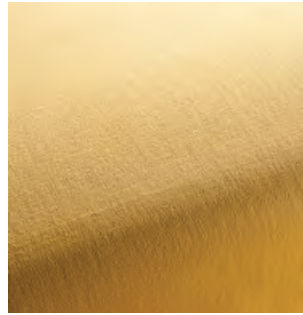


CH1249-896

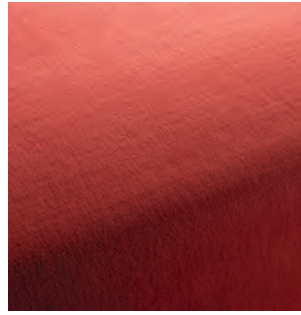
Hot Madison Reboot

Price category 1
Manufacturer JAB
Materials 63% Cotton, 37% Linen
Martindale 55.000
Lightfastness 4-5
Pilling 4-5

TEXTILE



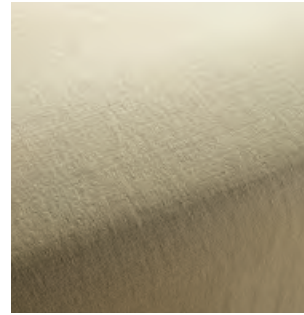
CH1249-897



CH1249-898



CH1249-934



CH1249-987



CH1249-988



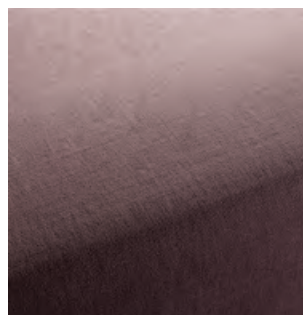
CH1249-989



CH1249-990



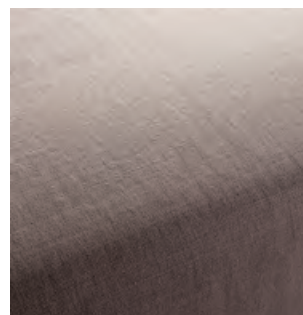
CH1249-991



CH1249-992



CH1249-993



CH1249-994

Champion

Price category 1
Manufacturer JAB
Materials 100% Polyester
Martindale 70.000
Lightfastness 5



Champion

Price category 1
Manufacturer JAB
Materials 100% Polyester
Martindale 70.000
Lightfastness 5

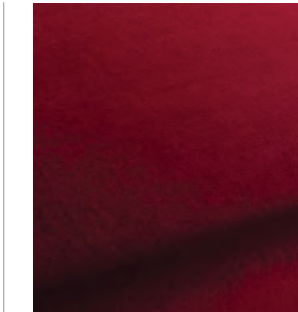
TEXTILE



1-3114-010



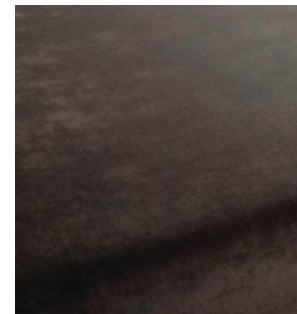
1-3114-011



1-3114-012



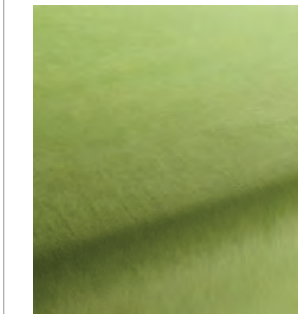
1-3114-020



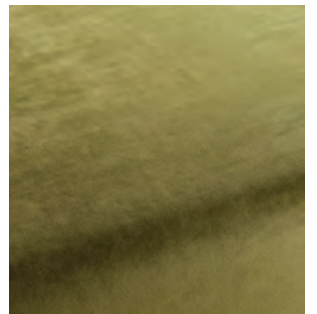
1-3114-021



1-3114-022



1-3114-031



1-3114-032



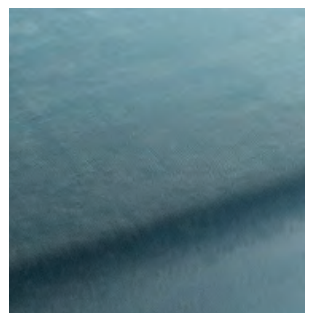
1-3114-035



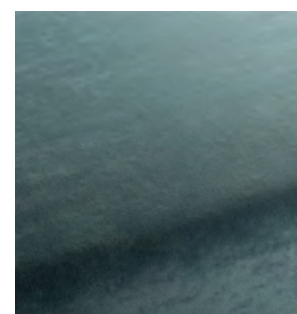
1-3114-040



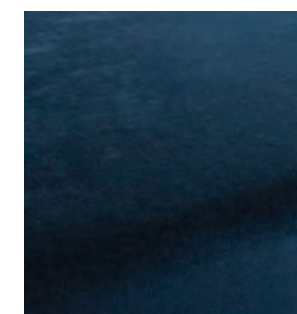
1-3114-041



1-3114-050



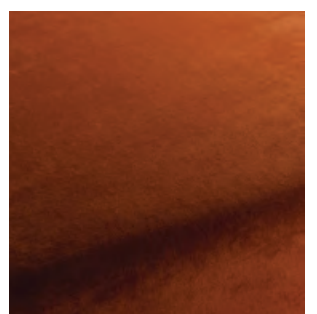
1-3114-051



1-3114-055



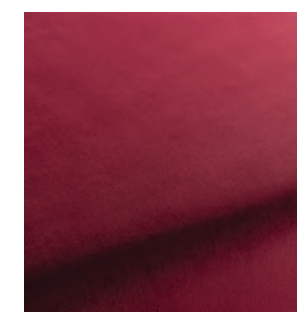
1-3114-060



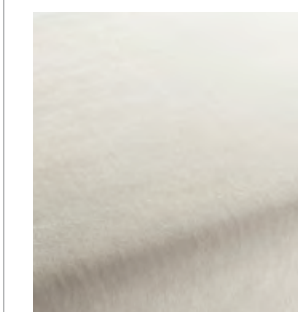
1-3114-061



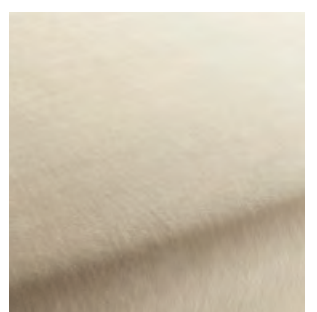
1-3114-062



1-3114-064



1-3114-070

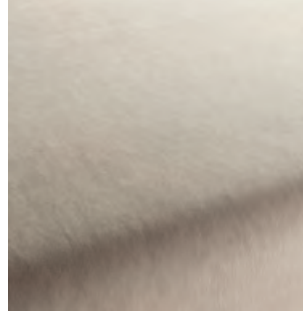


1-3114-071

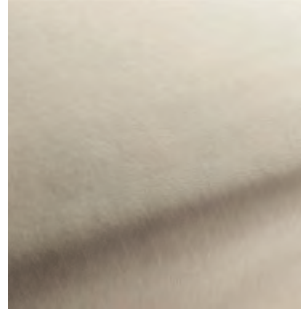
Champion

Price category 1
Manufacturer JAB
Materials 100% Polyester
Martindale 70.000
Lightfastness 5

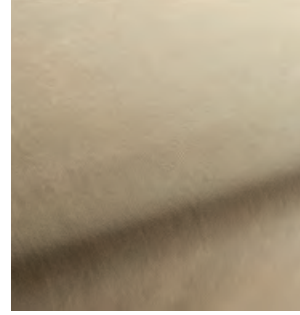
TEXTILE



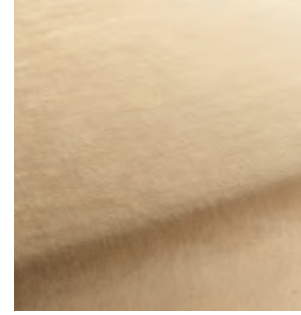
1-3114-072



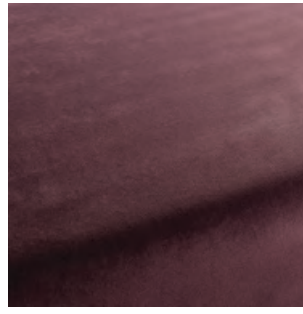
1-3114-073



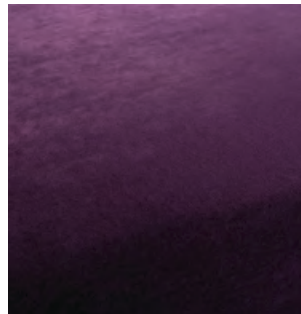
1-3114-074



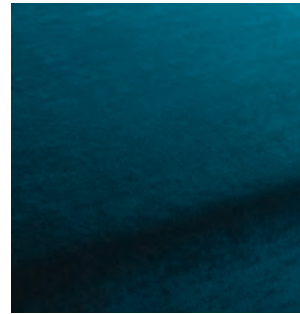
1-3114-075



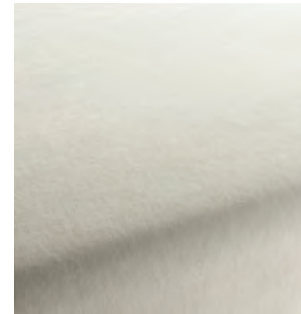
1-3114-080



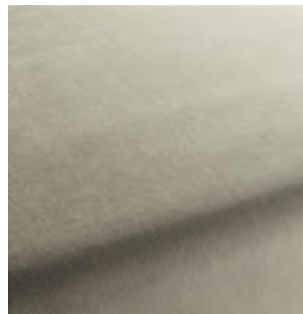
1-3114-081



1-3114-082



1-3114-090



1-3114-092

2

Textile Category 2

Colline 2

Price category 2
Manufacturer Kvadrat
Materials 75% wool, 17% Acrylic, 8% Nylon
Martindale 100.000
Lightfastness 6
Pilling 4-5



Colline 2

Price category 2
Manufacturer Kvadrat
Materials 75% wool, 17% Acrylic, 8% Nylon
Martindale 100.000
Lightfastness 6
Pilling 4-5

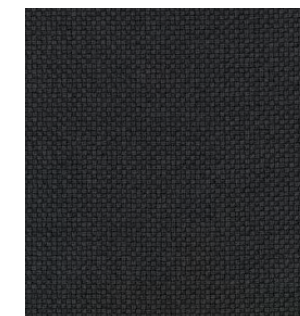
TEXTILE



0127



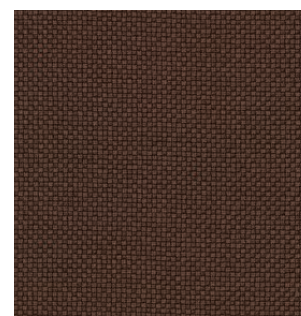
0147



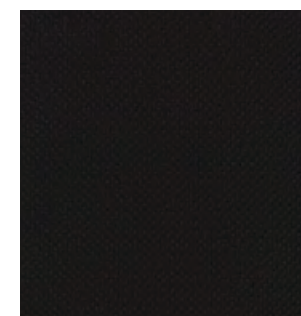
0177



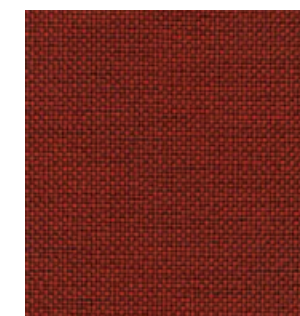
0227



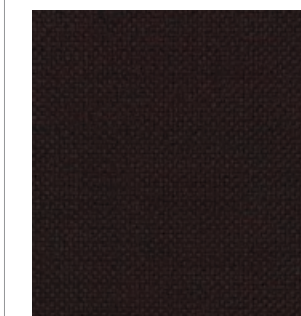
0347



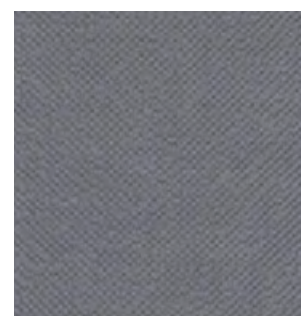
0397



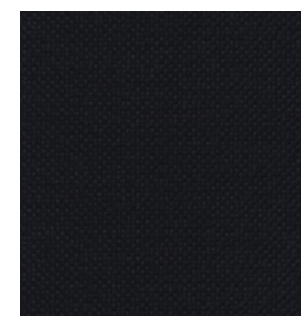
0657



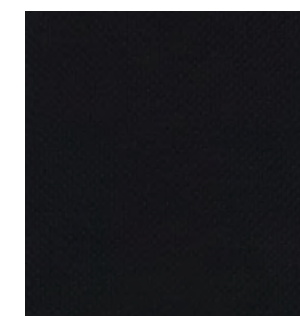
0677



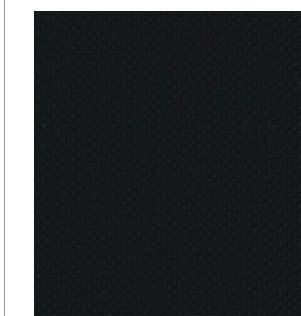
0737



0787



0797



0987

Hallingdal 65

Price category 2
Manufacturer Kvadrat
Materials 70% New wool, 30% Viscose
Martindale 100.000
Lightfastness 5-7
Pilling 3-4



Hallingdal 65

Price category 2
Manufacturer Kvadrat
Materials 70% New wool, 30% Viscose
Martindale 100.000
Lightfastness 5-7
Pilling 3-4

TEXTILE



0100



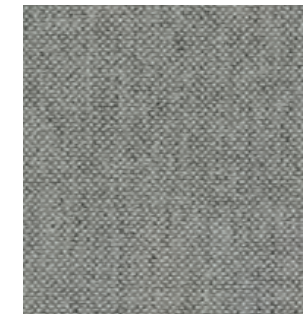
0103



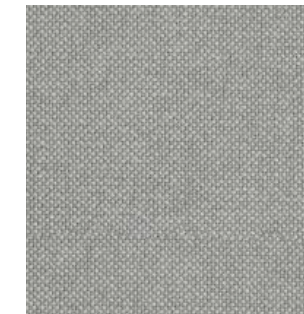
0110



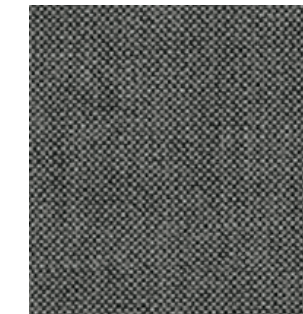
0113



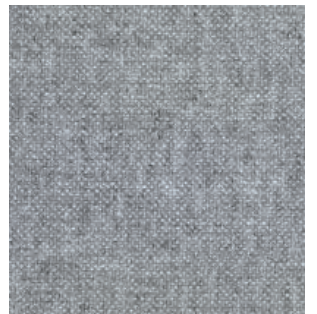
0116



0123



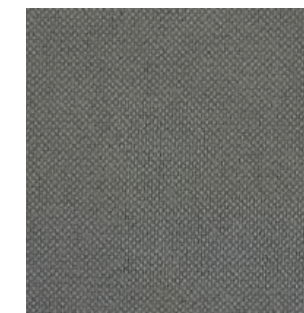
0126



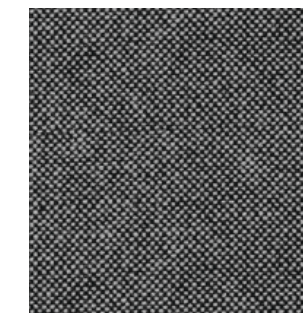
0130



0143



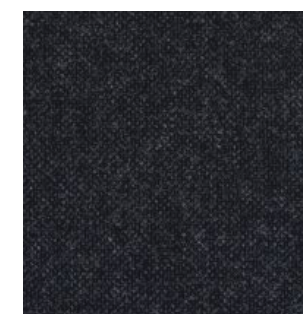
0153



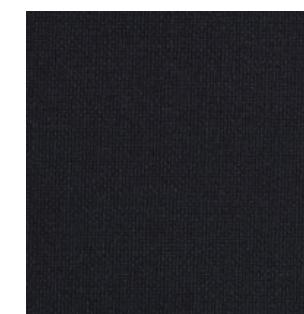
0166



0173



0180



0190



0200



0220



0224



0227



0270



0350

Hallingdal 65

Price category 2
Manufacturer Kvadrat
Materials 70% New wool, 30% Viscose
Martindale 100.000
Lightfastness 5-7
Pilling 3-4

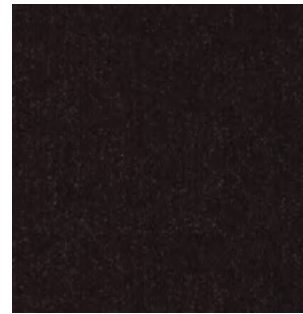
TEXTILE



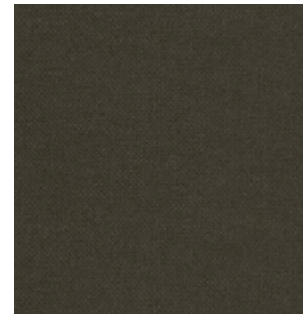
0368



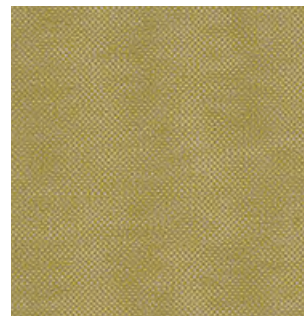
0370



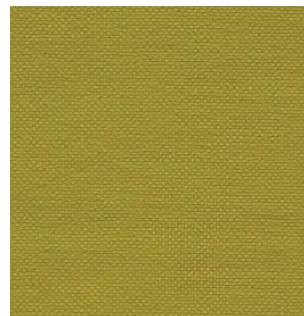
0376



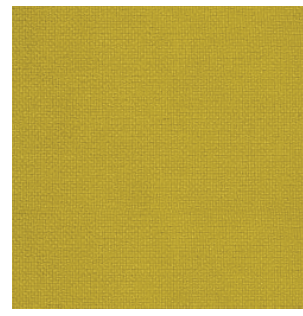
0390



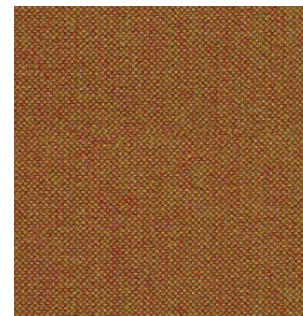
0407



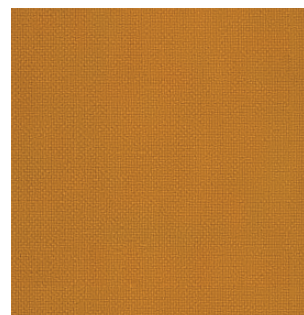
0420



0457



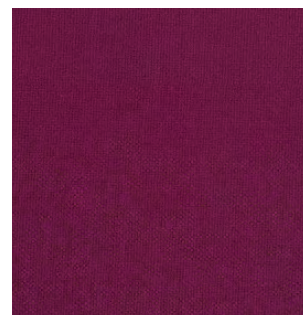
0526



0547



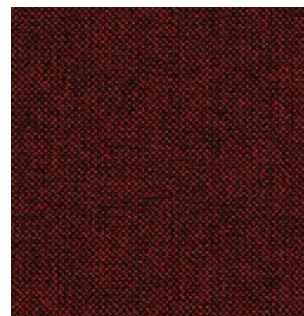
0563



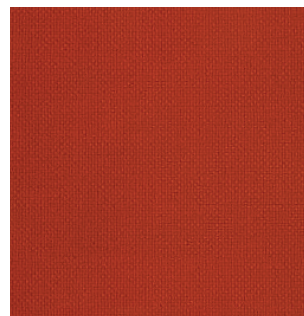
0573



0590



0596



0600



0657



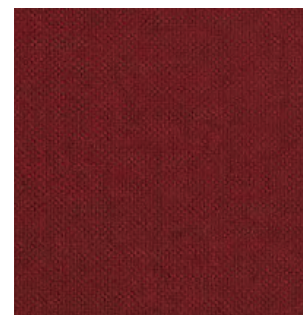
0660



0674



0680



0687



0694

Hallingdal 65

Price category 2
Manufacturer Kvadrat
Materials 70% New wool, 30% Viscose
Martindale 100.000
Lightfastness 5-7
Pilling 3-4

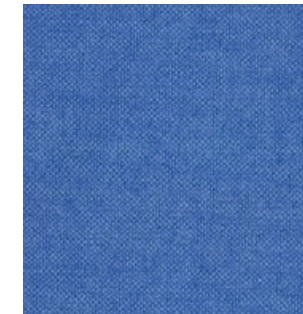
TEXTILE



0702



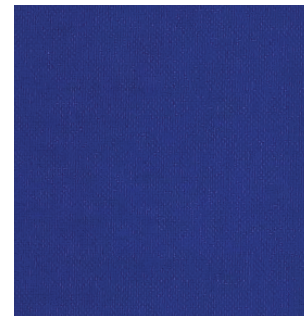
0723



0733



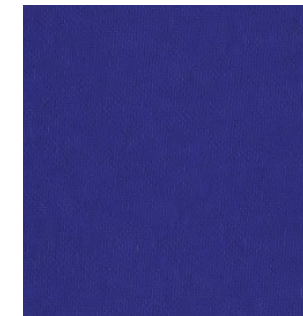
0750



0753



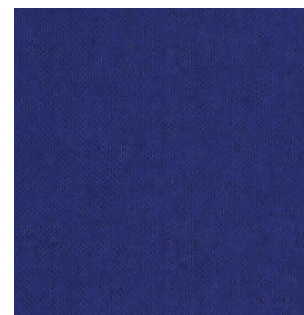
0754



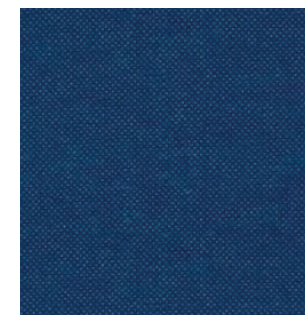
0763



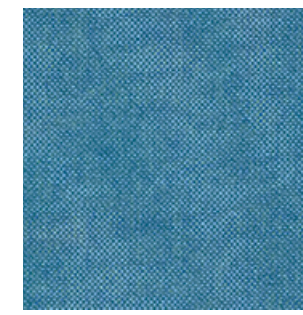
0764



0773



0810



0840



0850



0890



0907



0944



0960



0968



0980

Canvas 2

Price category 2
Manufacturer Kvadrat
Materials 90% New wool, 10% Nylon
Martindale 100.000
Lightfastness 5-7
Pilling 4-5



Canvas 2

Price category 2
Manufacturer Kvadrat
Materials 90% New wool, 10% Nylon
Martindale 100.000
Lightfastness 5-7
Pilling 4-5

TEXTILE



Canvas 2

TEXTILE

Price category 2
Manufacturer Kvadrat
Materials 90% New wool, 10% Nylon
Martindale 100.000
Lightfastness 5-7
Pilling 4-5



576



614



644



654



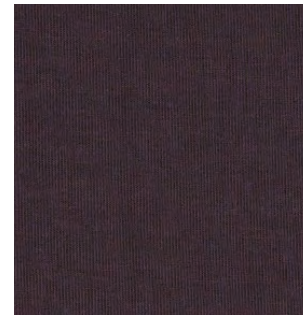
666



674



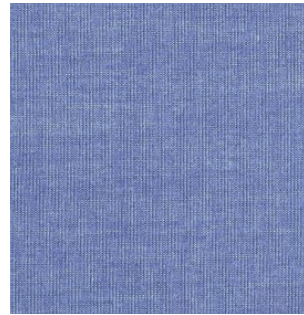
684



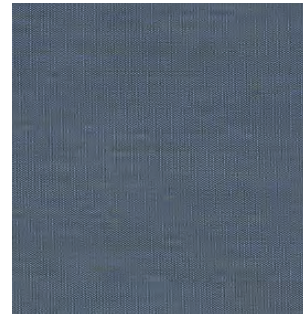
694



716



726



734



746



764



786



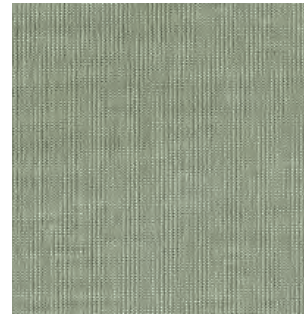
794



836



854



926



936



946

Canvas 2

TEXTILE

Price category 2
Manufacturer Kvadrat
Materials 90% New wool, 10% Nylon
Martindale 100.000
Lightfastness 5-7
Pilling 4-5



954



964



974



984



996

Fiord 2

Price category 2
Manufacturer Kvadrat
Materials 92% New wool, 8% Nylon
Martindale 60.000
Lightfastness 6
Pilling 4-5



Fiord 2

Price category 2
Manufacturer Kvadrat
Materials 92% New wool, 8% Nylon
Martindale 60.000
Lightfastness 6
Pilling 4-5

TEXTILE



Fiord 2

Price category 2
Manufacturer Kvadrat
Materials 92% New wool, 8% Nylon
Martindale 60.000
Lighfastness 6
Pilling 4-5



672



721



751



762



771



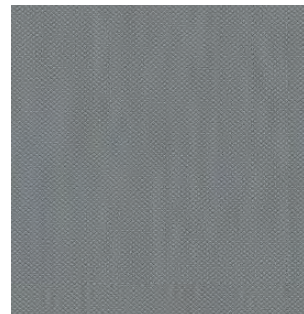
782



791



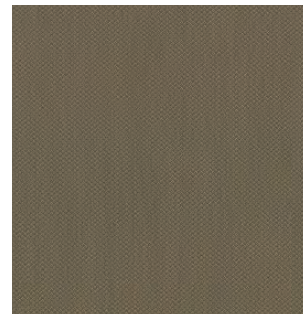
821



862



862



951



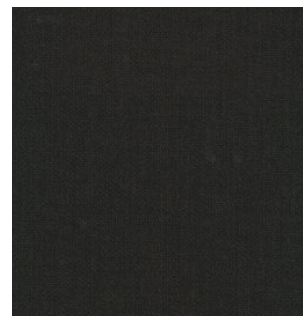
961



971



981



991

Savanna

Price category 2
Manufacturer Kvadrat
Materials 34% Polyester, 31% wool, 26%
Acrylic, 4% Cotton, 3% Nylon, 2% Linen
Martindale 45.000
Lightfastness 6-7
Pilling 3



Savanna

TEXTILE



242



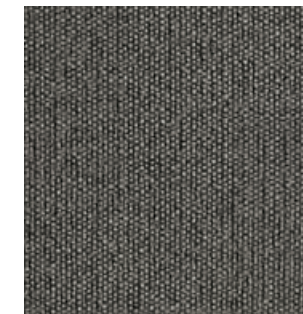
262



622



122



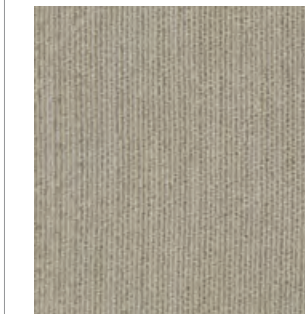
152



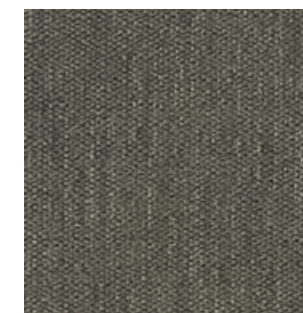
222



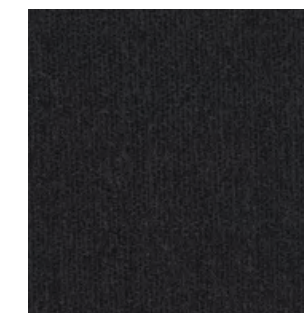
292



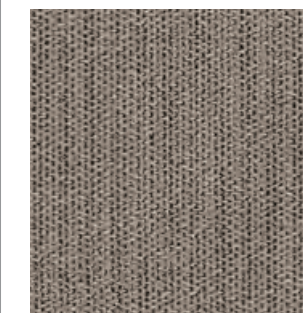
202



952



192



622

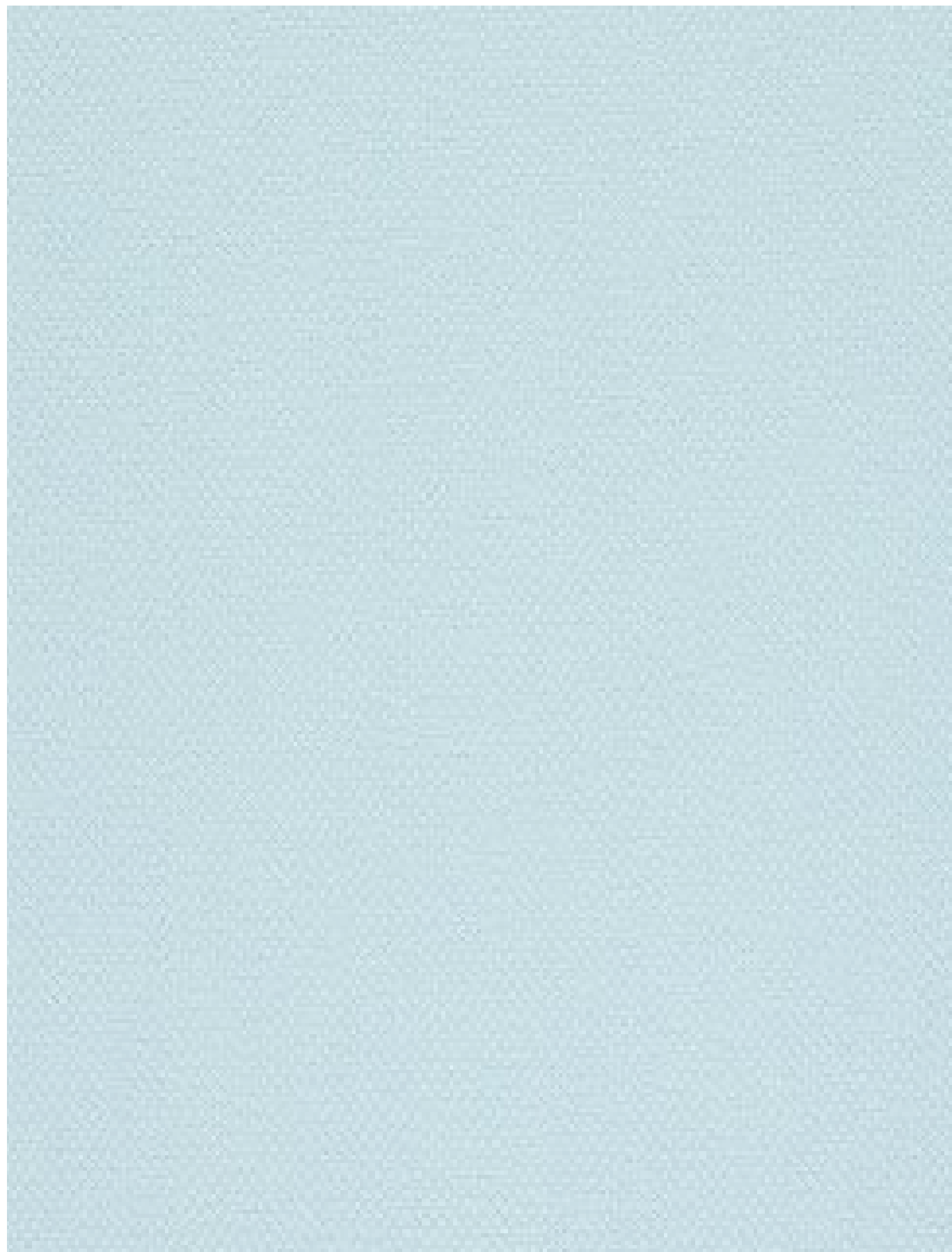


442

Price category 2
Manufacturer Kvadrat
Materials 34% Polyester, 31% wool, 26%
Acrylic, 4% Cotton, 3% Nylon, 2% Linen
Martindale 45.000
Lightfastness 6-7
Pilling 3

Steelcut 2

Price category 2
Manufacturer Kvadrat
Materials 90% New wool, 10% Nylon
Martindale 100.000
Lightfastness 5-7
Pilling 3-4



Steelcut 2

Price category 2
Manufacturer Kvadrat
Materials 90% New wool, 10% Nylon
Martindale 100.000
Lightfastness 5-7
Pilling 3-4

TEXTILE



Steelcut 2

Price category 2
Manufacturer Kvadrat
Materials 90% New wool, 10% Nylon
Martindale 100.000
Lightfastness 5-7
Pilling 3-4

TEXTILE



605



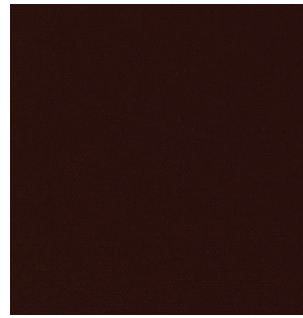
615



625



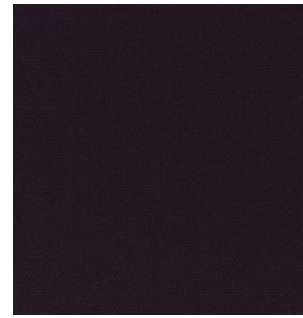
635



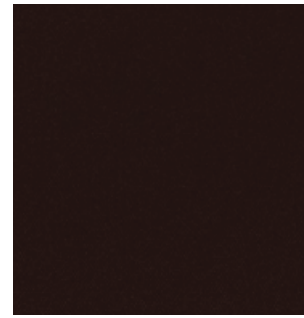
655



660



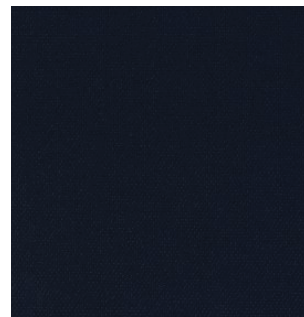
685



695



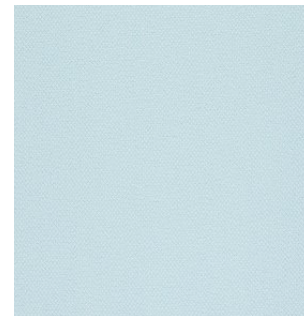
760



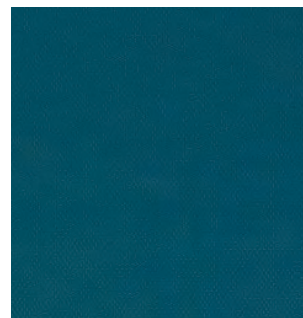
775



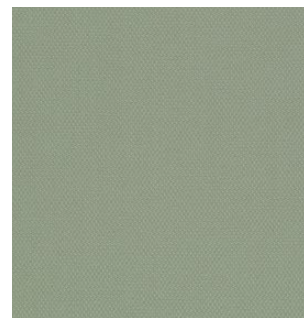
780



820



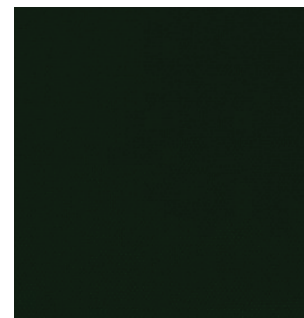
835



935



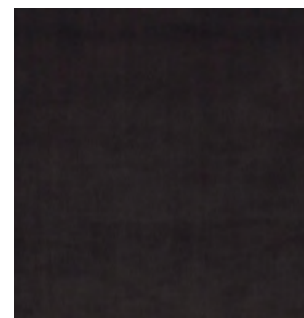
950



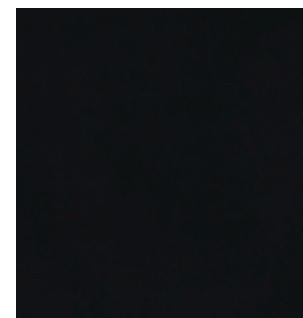
975



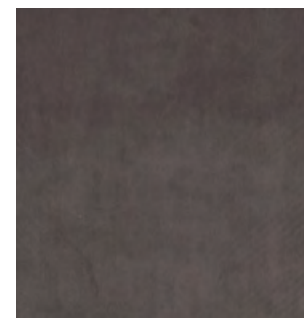
985



1122



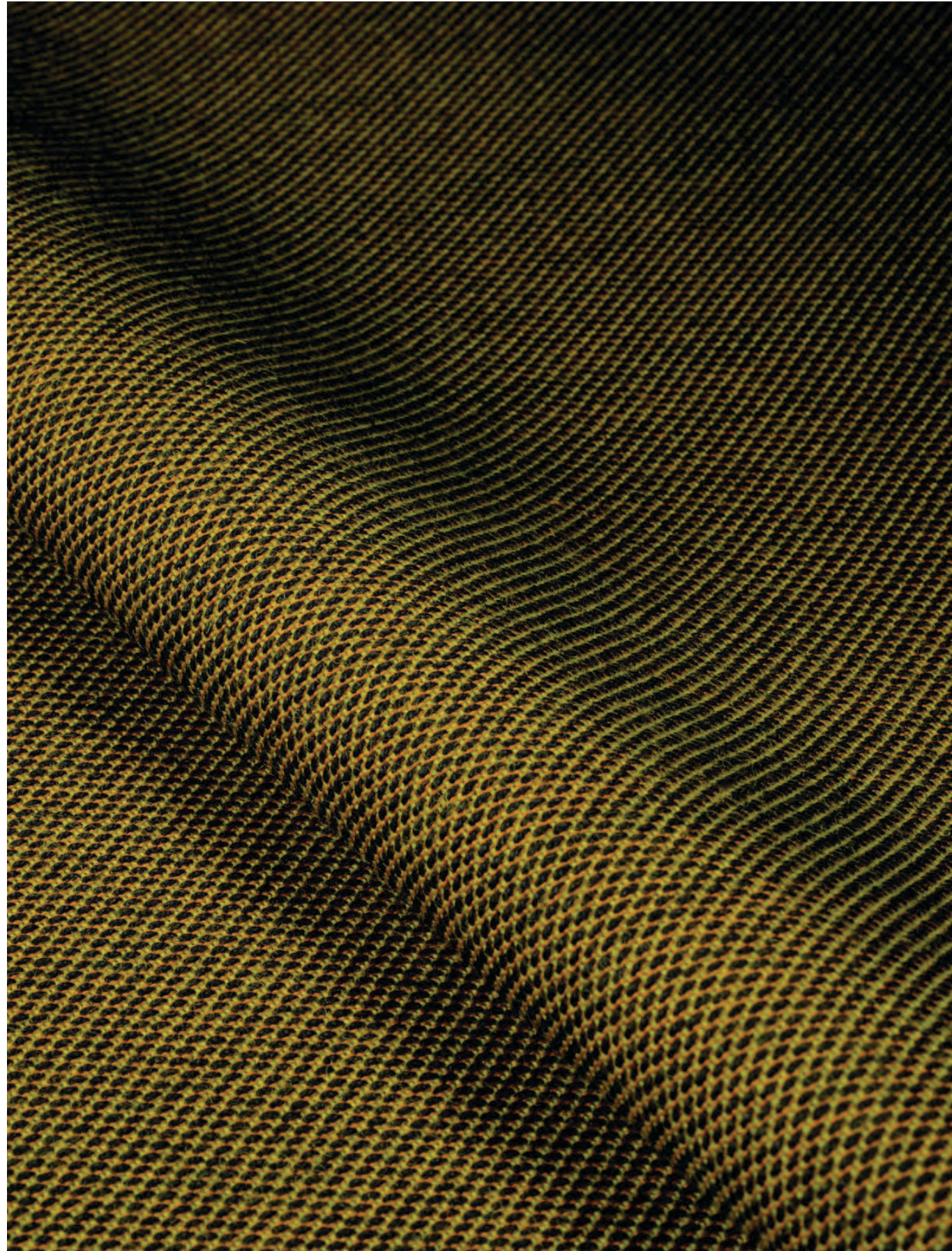
0917



1362

Steelcut Trio 3

Price category 2
Manufacturer Kvadrat
Materials 90% New wool, 10% Nylon
Martindale 100.000
Lightfastness 5-7
Pilling 4



Steelcut Trio 3

Price category 2
Manufacturer Kvadrat
Materials 90% New wool, 10% Nylon
Martindale 100.000
Lightfastness 5-7
Pilling 4

TEXTILE



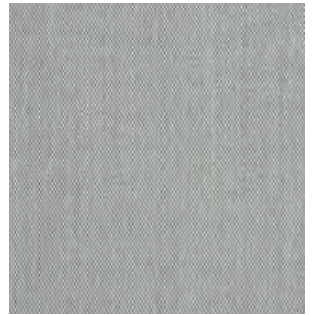
105



113



124



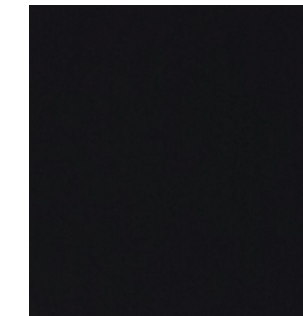
133



153



176



195



205



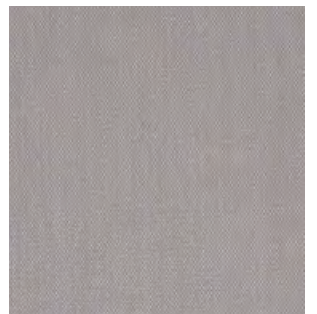
213



226



236



246



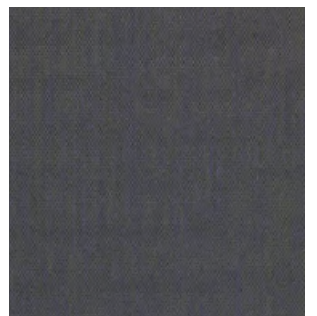
253



266



276



283



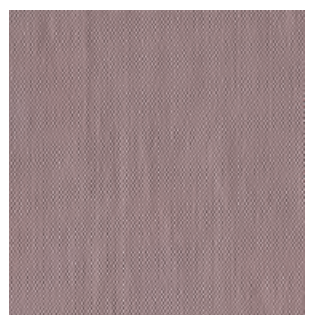
336



376



383



416

Steelcut Trio 3

TEXTILE

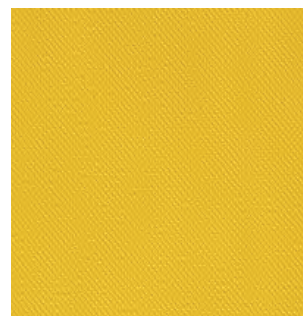
Price category 2
Manufacturer Kvadrat
Materials 90% New wool, 10% Nylon
Martindale 100.000
Lightfastness 5-7
Pilling 4



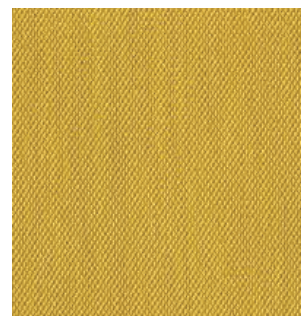
426



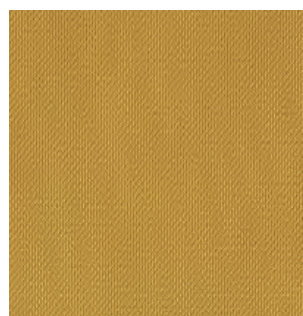
436



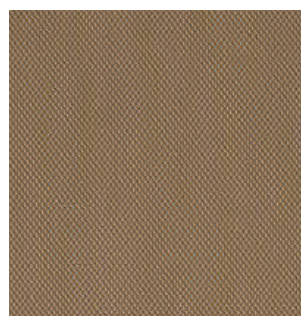
446



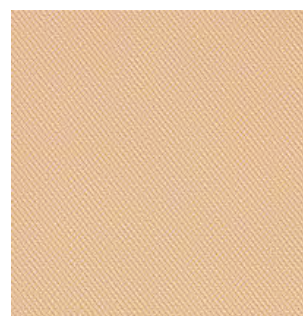
453



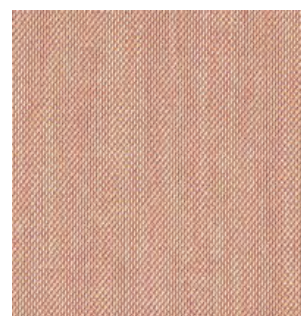
466



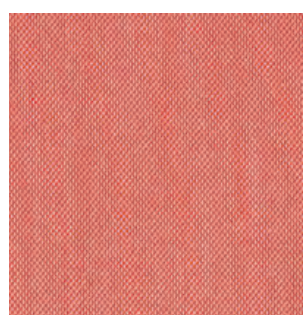
476



506



515



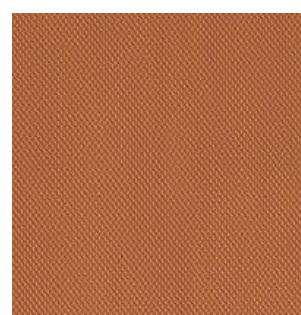
526



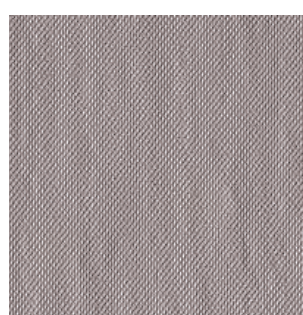
533



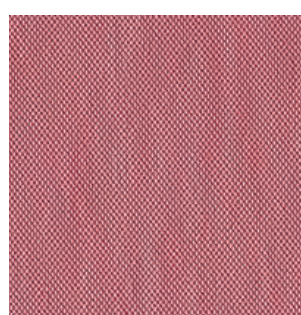
553



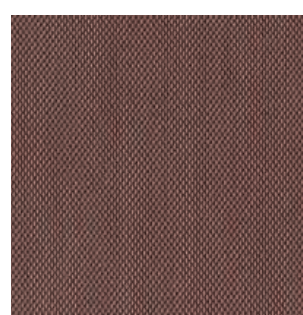
576



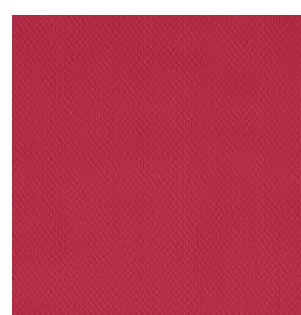
616



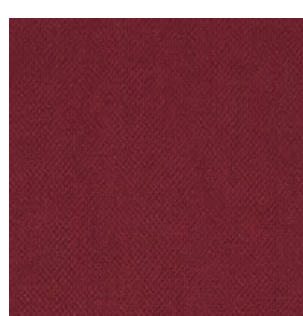
636



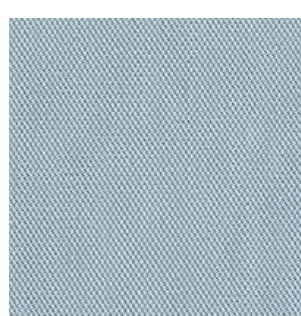
645



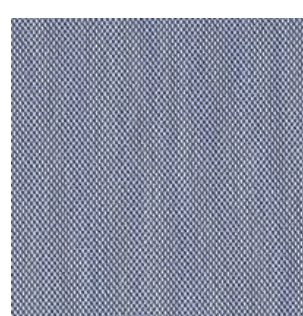
666



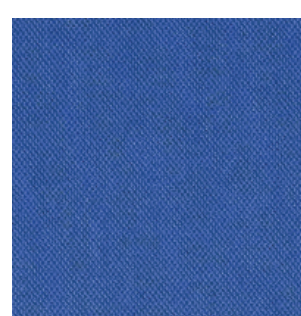
686



713



716



746

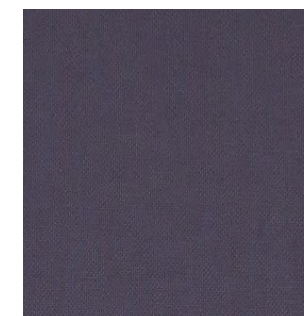
Steelcut Trio 3

TEXTILE

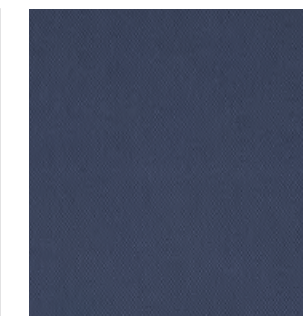
Price category 2
Manufacturer Kvadrat
Materials 90% New wool, 10% Nylon
Martindale 100.000
Lightfastness 5-7
Pilling 4



756



776



796



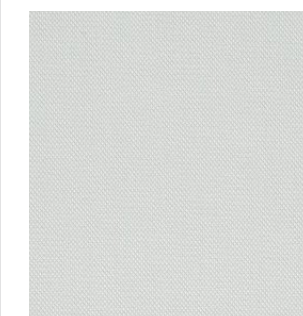
806



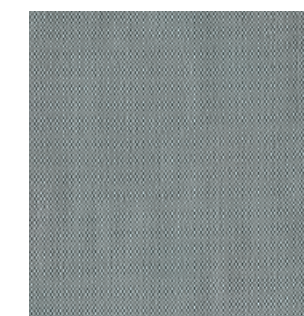
865



883



906



916



946



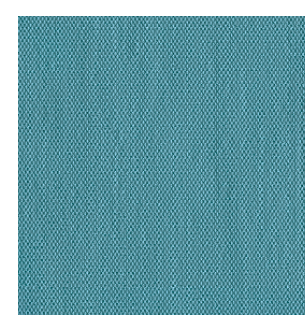
953



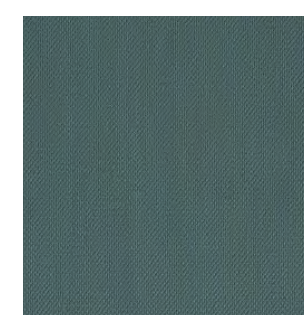
966



976



983



996

Clay

Price category 2
Manufacturer Sahco
Materials 76% Linen, 21% Cotton, 3% Polyester
Martindale 45.000
Lightfastness 4-6
Pilling 4



Clay

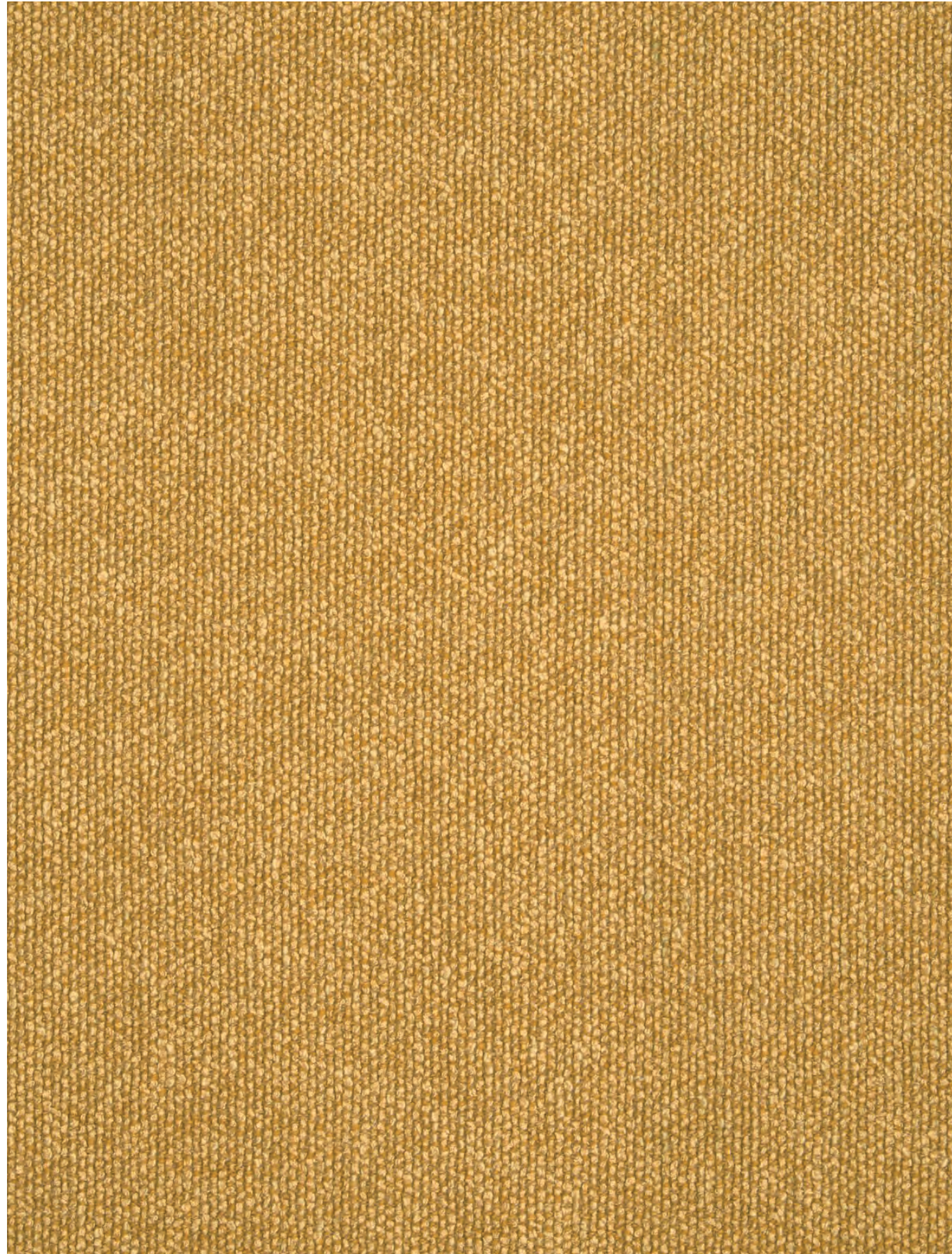
Price category 2
Manufacturer Sahco
Materials 76% Linen, 21% Cotton, 3% Polyester
Martindale 45.000
Lightfastness 4-6
Pilling 4

TEXTILE



Moss

Price category 2
Manufacturer Sahco
Materials 52% Cotton, 22% Viscose, 14% Acrylic,
6% Linen, 3% Polyester, 3% Nylon
Martindale 45.000
Lightfastness 6-7
Pilling 4-5



Moss

TEXTILE

Price category 2
Manufacturer Sahco
Materials 52% Cotton, 22% Viscose, 14% Acrylic,
6% Linen, 3% Polyester, 3% Nylon
Martindale 45.000
Lightfastness 6-7
Pilling 4-5



0001



0002



0003



0004



0005



0006



0007



0008



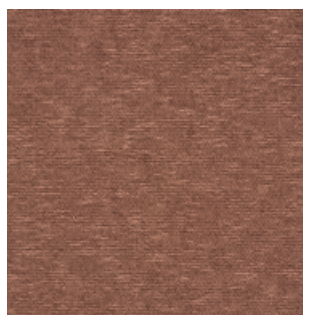
0009



0010



0011



0012



0013



0014



0015



0016



0017



0018



0019



0020

Moss

Price category 2
Manufacturer Sahco
Materials 90% New wool, 10% Nylon
Martindale 100.000
Lightfastness 5-7
Pilling 4-5



0021



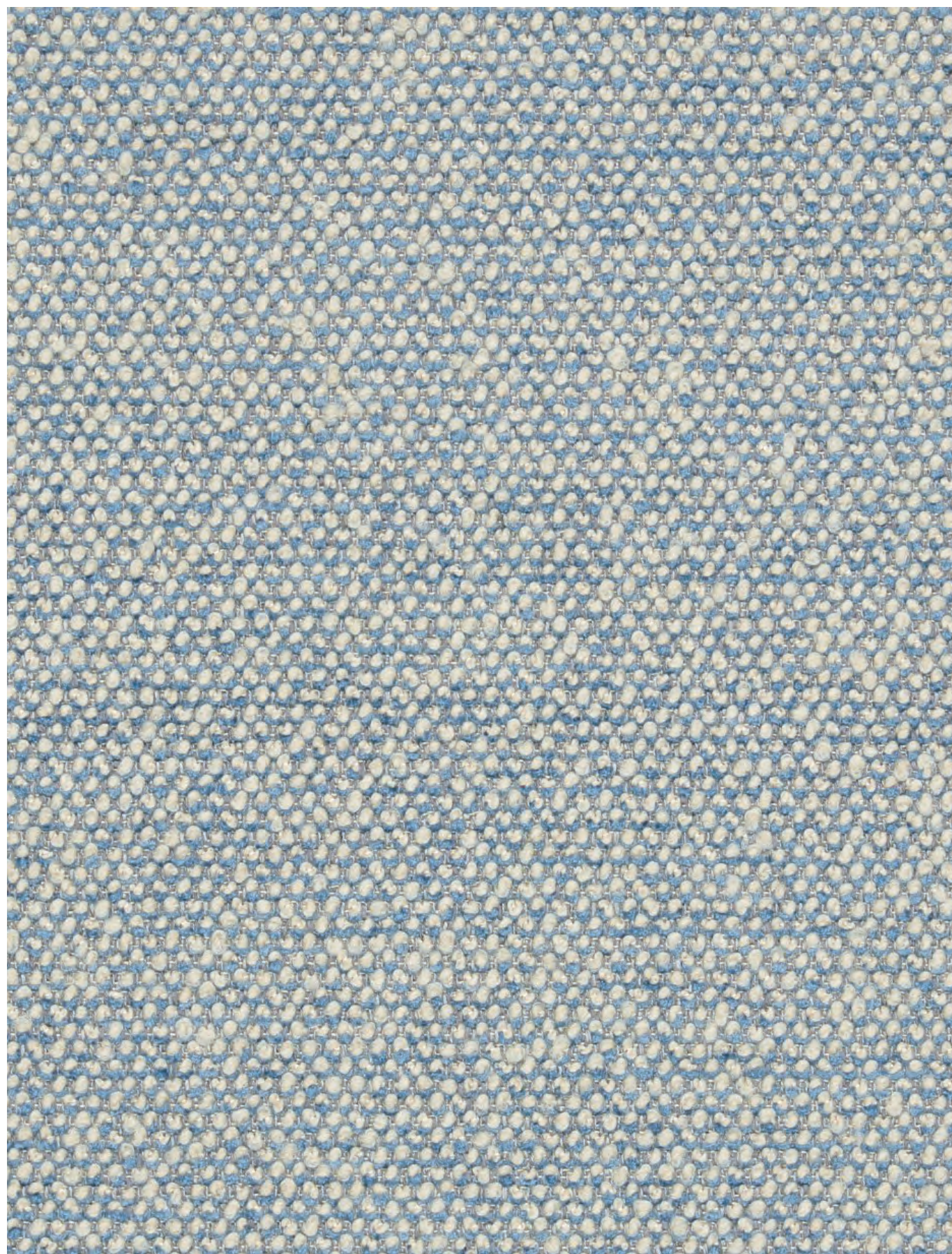
0022

3

Textile Category 3

Safire

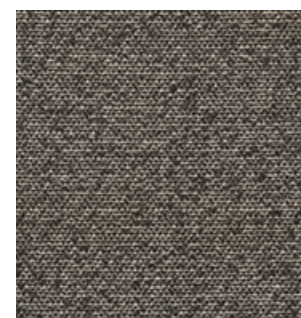
Price category 3
Manufacturer Sahco
Materials 43% Viscose, 17% Polyacrylic, 15%
New wool, 9% Cotton, 8% Linen, 8% Polyester
Martindale 40.000
Lightfastness 6
Pilling 3



Safire

Price category 3
Manufacturer Sahco
Materials 43% Viscose, 17% Polyacrylic, 15%
New wool, 9% Cotton, 8% Linen, 8% Polyester
Martindale 40.000
Lightfastness 6
Pilling 3

TEXTILE



001



002



003



004



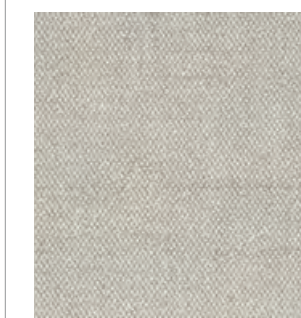
005



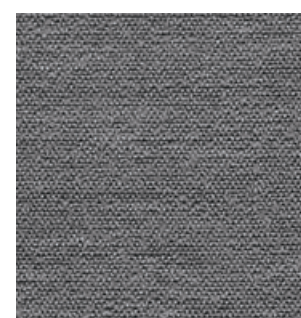
006



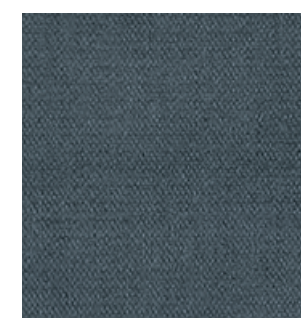
007



008



009



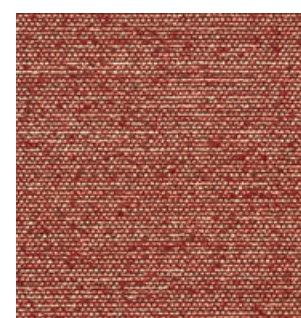
010



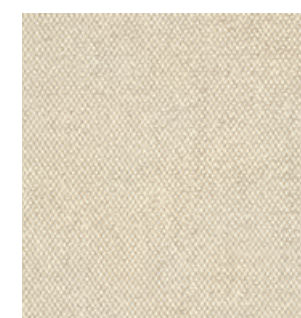
011



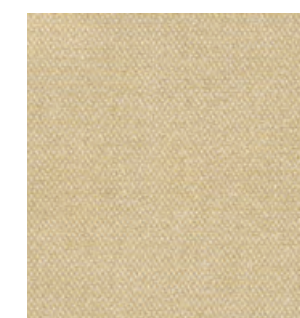
012



013



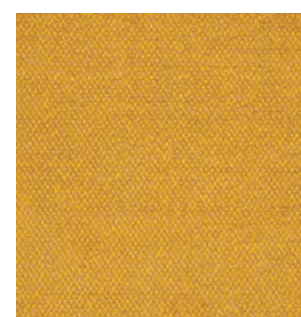
014



015



016



017

Upholstery Selection & Furniture

The MENU upholstery programme shows an overview of our textile and leather standard programme. All textile and leather collections are available in all colours. Please note that the colour references are only intended as a guide. For further information please see manufacturer websites, or contact your local MENU sales representative.

Selection of textiles or leather outside of our upholstery programme, is subject to final testing and approval. Additional deliverytime may also occur.

sorensenleather.com
kvadrat.com
nevotex.com



Upholstery Selection & Furniture

Use table to determine the upholstery options available for fabric-covered items.

	AFTERROOM	AFTERROOM PLUS	EAVE	GODOT	HARBOUR	OFFSET	TAILOR	CO CHAIR	TEAROOM	KNITTING CHAIR
LEATHER										
PRICE CATEGORY 1										
Ultra, Sørensen Leather	•	•			•		•	•		•
Dakar, Nevotex	•	•			•		•	•		•
PRICE CATEGORY 2										
Shade, Sørensen Leather	•	•			•		•	•		•
Dunes, Sørensen Leather	•	•			•		•	•		•
Nuance, Sørensen Leather	•	•			•		•	•		•
Triumph, Sørensen Leather	•	•			•		•	•		•
PRICE CATEGORY 3										
Royal Nubuck, Sørensen Leather	•	•			•		•	•		•
PRICE CATEGORY 4										
Elegance, Sørensen Leather	•	•						•		

1

Leather Category 1

Ultra

Price category 1
Manufacturer Sørensens Leather
Materials Protected leather
Thickness 0.9 - 1.1 mm



Ultra

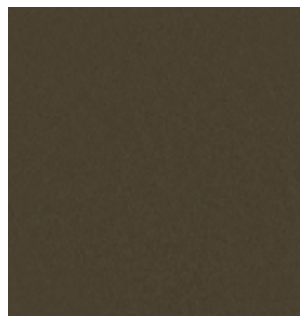
Price category 1
Manufacturer Sørensens Leather
Materials Protected leather
Thickness 0.9 - 1.1 mm



Ultra

Price category 1
Manufacturer Sørensen Leather
Materials Protected leather
Thickness 0.9 - 1.1 mm

LEATHER



Moss - 41569



Oat - 41568



Smoke - 41567

Dakar

Price category 1
Manufacturer Nevotex
Materials Aniline leather
Thickness 0.9 – 1.1 mm



Tailor Sofa, Dark Stained Oak / Dakar 0311, by Rui Alves

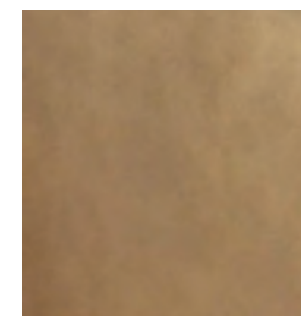
Dakar

Price category 1
Manufacturer Nevotex
Materials Aniline leather
Thickness 0.9 – 1.1 mm

LEATHER



0197 Tan



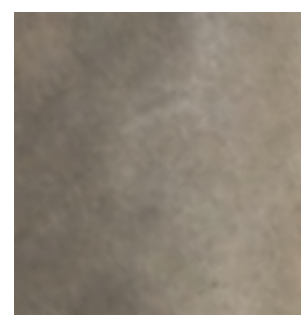
0229 Chestnut



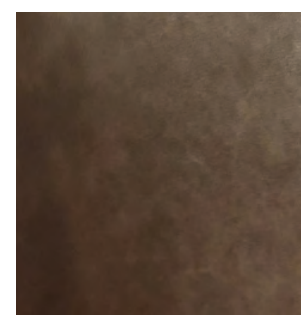
0250 Cognac



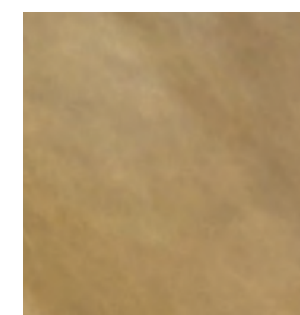
0258 Soil



0311 Antilop



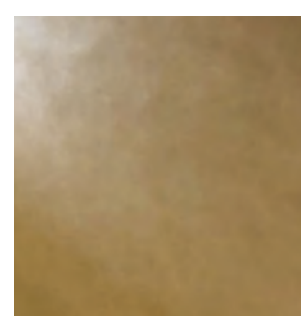
0329 Brown



0549 Dune



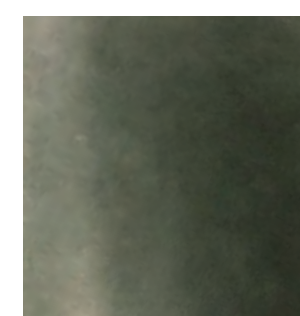
0550 Yellow



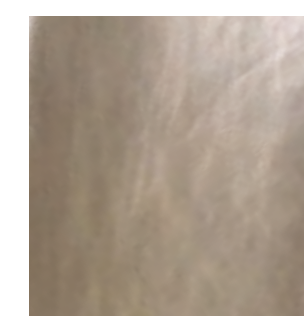
0551 Whisky



0565 Orange



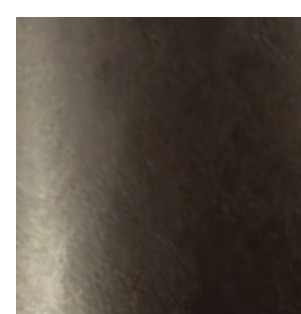
0681 Dark Green



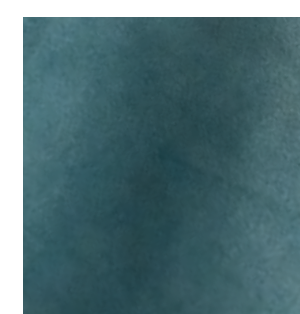
0691 Terragon



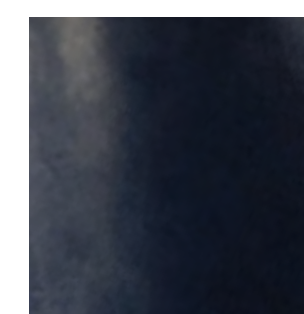
0692 Light Green



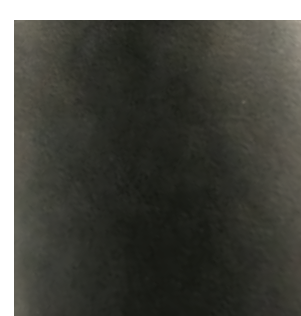
0738 Aubergine



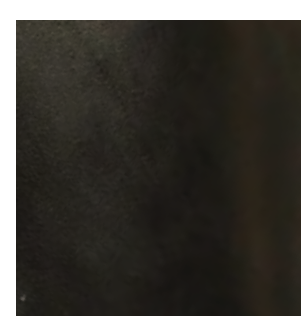
0778 Turkis



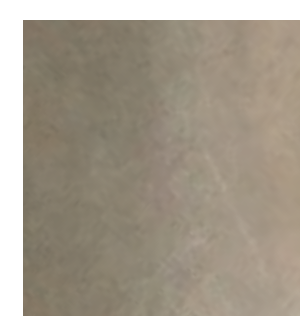
0779 Deep Blue



0780 Dark Grey



0842 Black



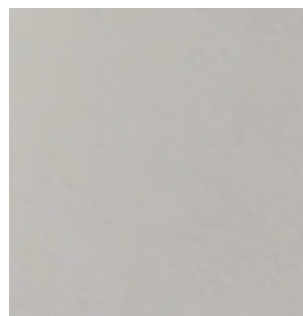
0854 Grey



0855 Grayshadow

Dakar

Price category 1
Manufacturer Nevotex
Materials Aniline leather
Thickness 0.9 - 1.1 mm



01015 White



03009 Ciocco



04009 Parrot



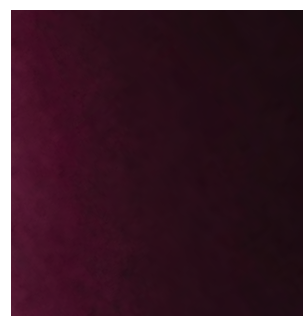
04010 Pot-Porry



04060 Purple



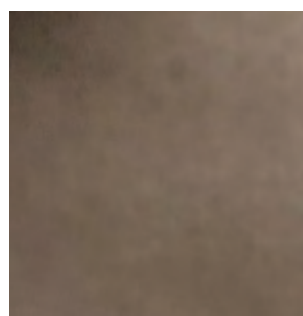
04109 Red



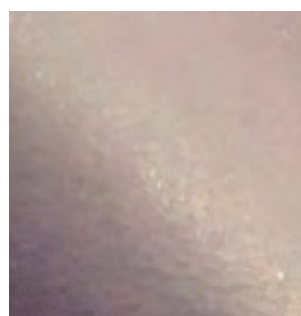
04147 Dark Red



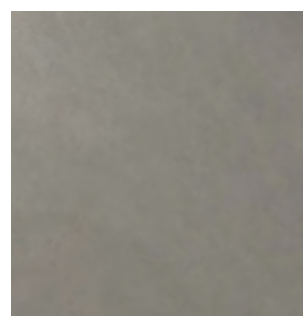
06013 Green



06048 Peatmoos



07008 Dark Purple



08079 Light Grey

2

Leather Category 2

Dunes

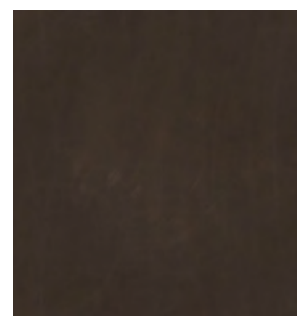
Price category 2
Manufacturer Sørensen Leather
Materials Aniline leather
Thickness 1.1 – 1.3 mm



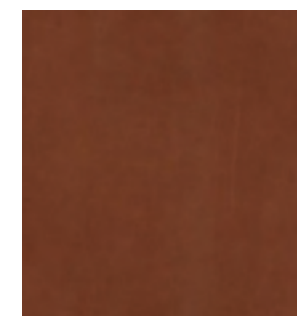
Dunes

Price category 2
Manufacturer Sørensen Leather
Materials Aniline leather
Thickness 1.1 – 1.3 mm

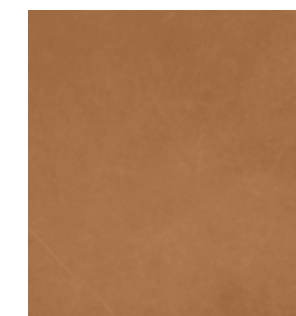
LEATHER



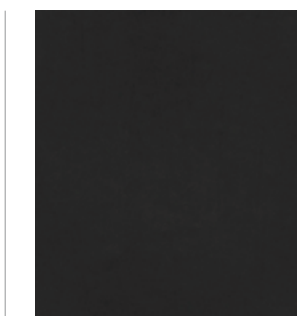
Dark Brown



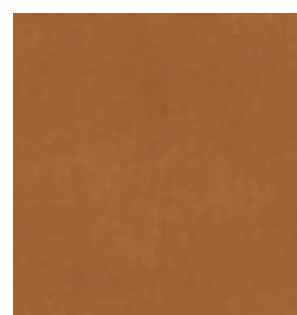
Rust



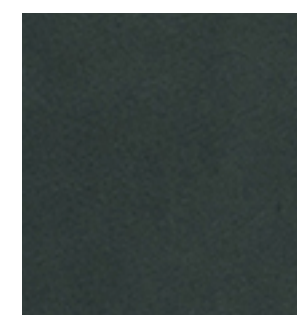
Camel



Anthrazit



Cognac



Racing Green

Shade

Price category 2
Manufacturer Sorensen Leather
Materials Protected Aniline leather
Thickness 1.1 - 1.3 mm



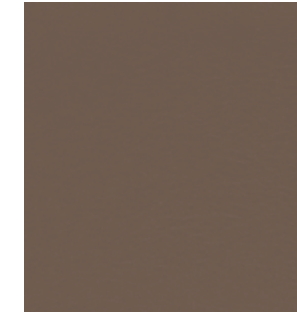
Shade

Price category 2
Manufacturer Sorensen Leather
Materials Protected Aniline leather
Thickness 1.1 - 1.3 mm

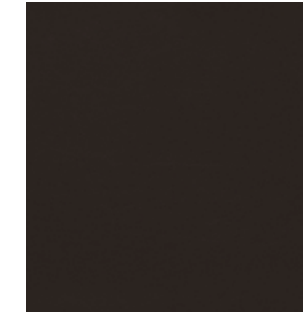
LEATHER



Raw siena - 20290



Basalt - 20297



Ebony - 20293



Slade - 20299



Raw umber - 20292



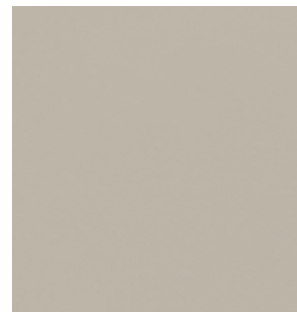
Pitch black - 20296



Light concrete - 20294



Khaki - 20289



Sand - 20298



Ochre - 20291

Nuance

Price category 2
Manufacturer Sørensen Leather
Materials Protected leather
Thickness 1.1 - 1.3 mm



Nuance

Price category 2
Manufacturer Sørensen Leather
Materials Protected leather
Thickness 1.1 - 1.3 mm

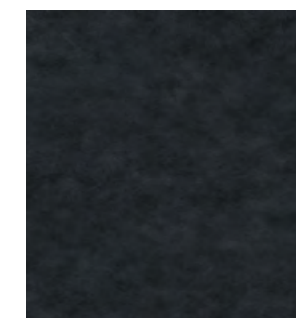
LEATHER



Shadow grey - 40780



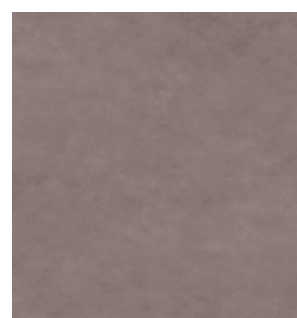
Earthy grey - 40781



Heavenly grey - 40781



Smoked grey - 40784



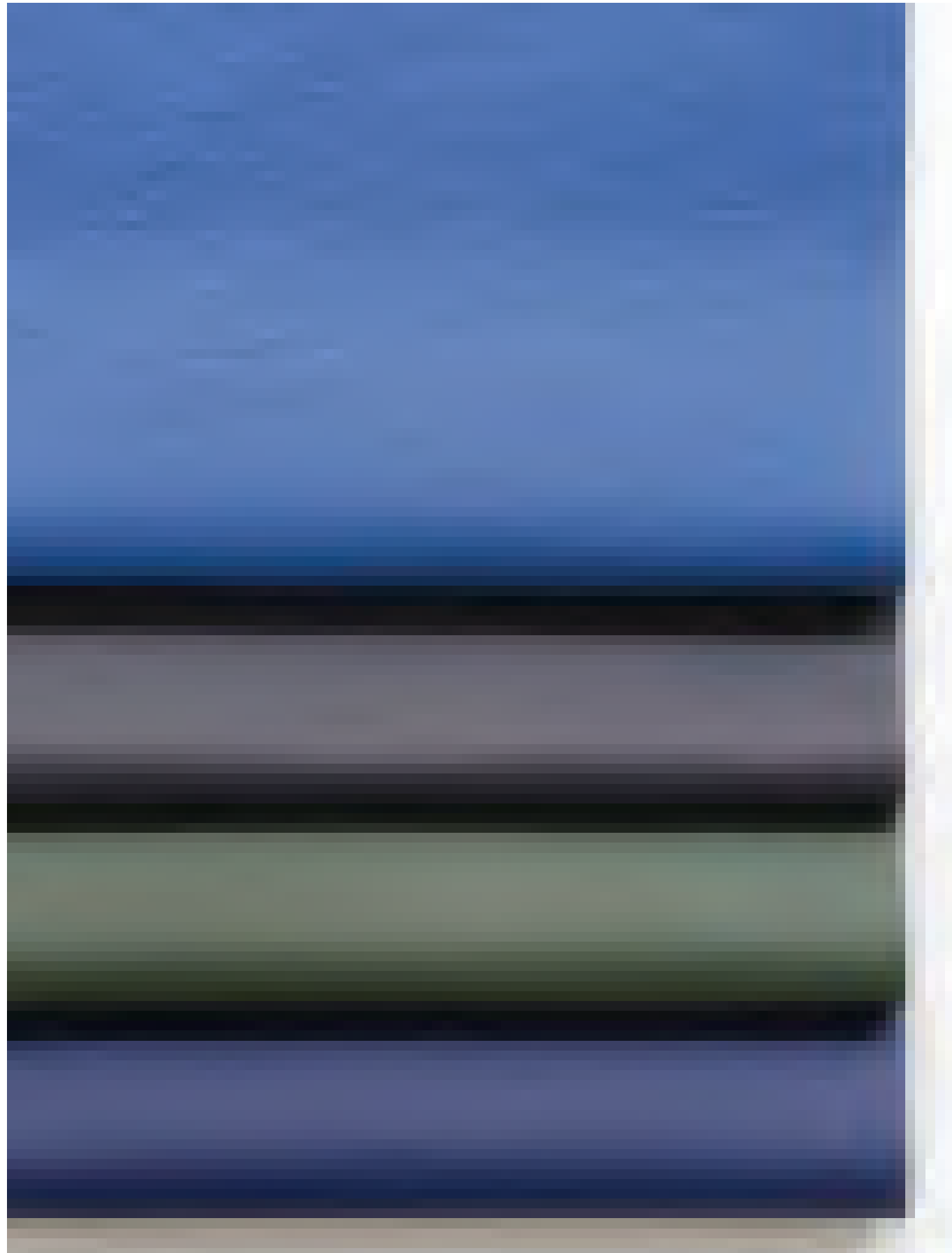
Burned grey - 40783



Light grey - 40782

Triumph

Price category 2
Manufacturer Sorensen Leather
Materials Protected leather
Thickness 1.0 - 1.3 mm



Triumph

Price category 2
Manufacturer Sorensen Leather
Materials Protected leather
Thickness 1.0 - 1.3 mm



3

Leather Category 3

Royal Nubuck

Price category 3
Manufacturer Sørensen Leather
Materials Aniline leather
Thickness 1.2 - 1.6 mm



Harbour Dining Chair, Dark Stained Oak / Royal Nubuck 30253, by Norm Architects

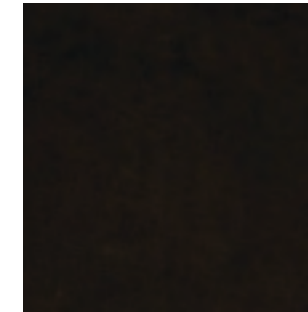
Royal Nubuck

Price category 3
Manufacturer Sørensen Leather
Materials Aniline leather
Thickness 1.4 - 1.6 mm

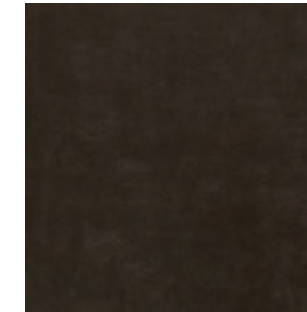
LEATHER



Mineral - 30251



Havana - 30258



Stone - 30255



Off-white - 30252



Lava - 30254



Cinnamon - 30257



Almond - 30256



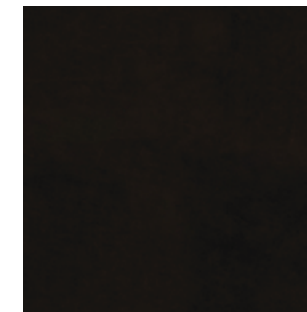
Light Grey - 30250



Ecu - 30253



Cognac - 30260



Black - 30259

4

Leather Category 4

Elegance

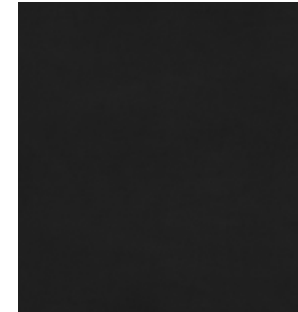
Price category 4
Manufacturer Sørensen Leather
Materials Aniline leather
Thickness 1.2 – 1.4 mm



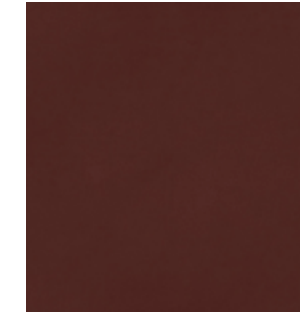
Elegance

Price category 4
Manufacturer Sørensen Leather
Materials Aniline leather
Thickness 1.2 – 1.4 mm

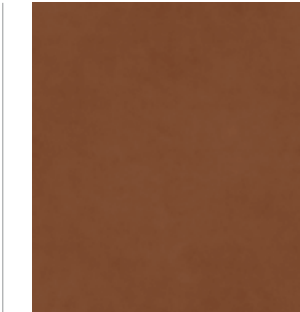
LEATHER



Black - 20198



Indian Red - 20193



Walnut - 20195



Mocca - 20197

Natural Markings On Leather



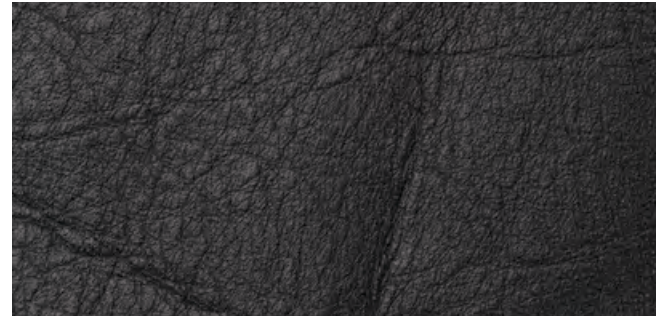
FAT WRINKLE



SCAR / INSECT BITES



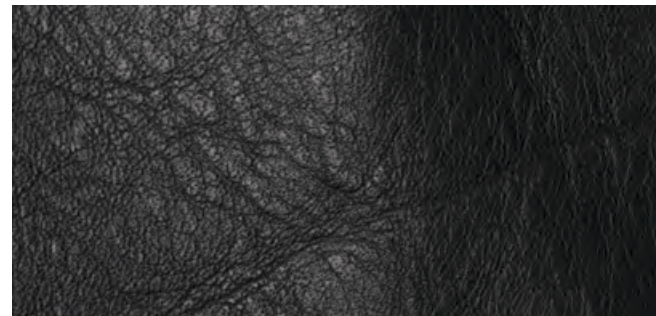
FOLDS



BUTCHING SCAR



HEALED SCARS



FAT WRINKLES

Individual and unique markings may appear on the leather and should not be considered defects.

