



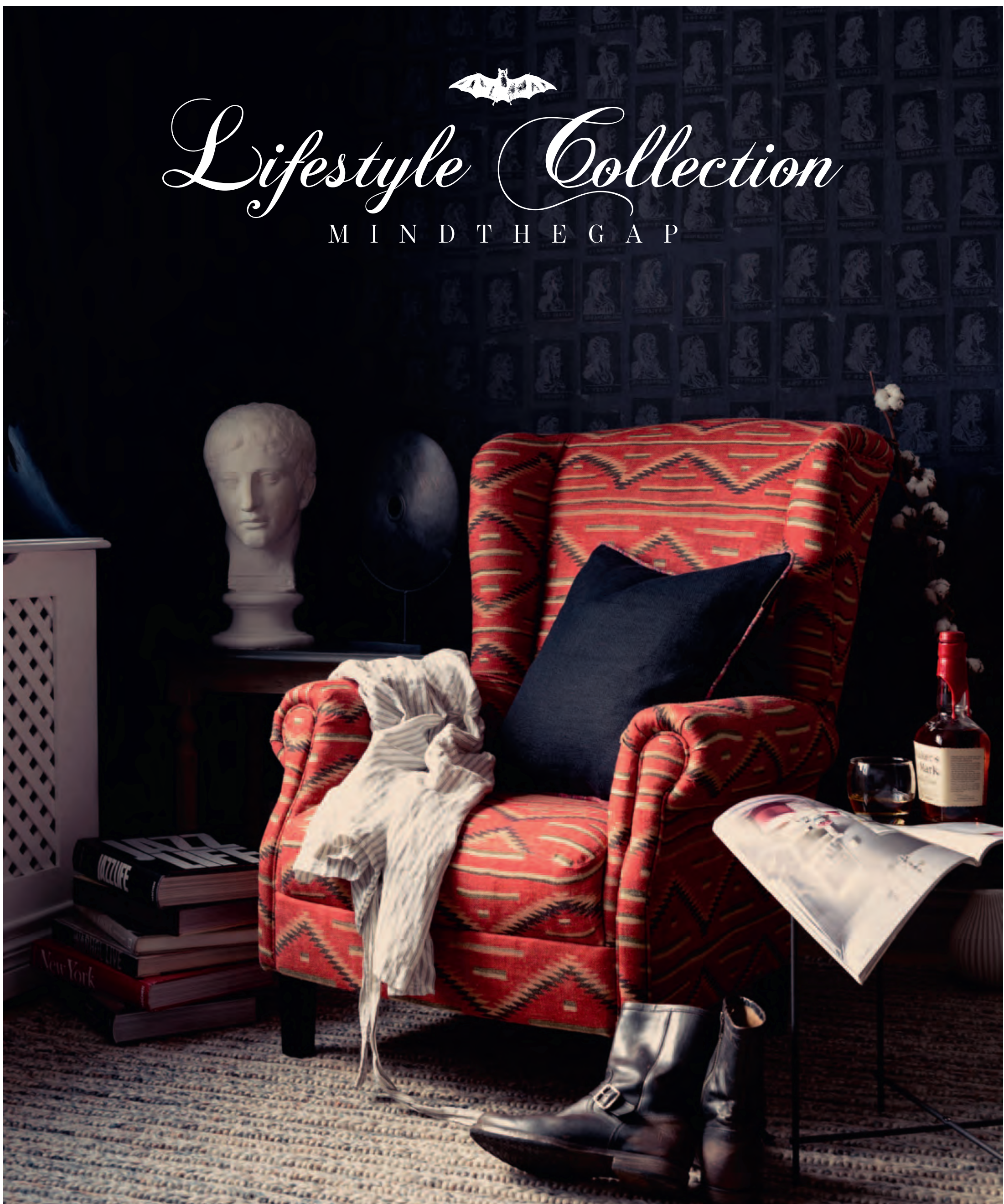
[2020] SUPPLY CATALOGUE

~ With love for comfort ~



Lifestyle Collection

MINDTHEGAP



The TRANSYLVANIAN MANOR





The TRANSYLVANIAN MANOR

The Transylvanian Manor is a love letter to our mystical homeland, paying homage to Transylvania's romantic heritage and history. Telling the story of sixteenth century Hungarian nobility living in Bethlen Castle, the collection reimagines the legends and tales whispered along the castle's walls and corridors.

Classical royal motifs and rich ornamentation evoke the family's grandly exuberant lifestyle, while painterly landscapes recreate the abundant Renaissance-style gardens, picturesque forests and mountains surrounding the ancient home, where voluptuous flowers bloom, exotic birds swoop and wild animals wander undisturbed.

Eclectic and extravagant, The Transylvanian Manor follows the Bethlen's noble family on their travels, taking in cornerstones in European nobility's Grand Tours - yet it is the history and heritage of Transylvania and the timeless decadence of Bethlen Castle and its former noble residents which prevail throughout the endlessly intricate designs.

Beautifully ornate and feminine, 19 abundantly patterned wallpapers combine the impact of a mural with traditional wallpaper repeats, while six daringly hued printed velvets and stone washed linens combine elegant Chinoiserie references with hand-drawn flora and fauna.

Taking advantage of Transylvania's time-honoured arts and crafts skills, the collection includes neoclassical-style upholstered hardwood furniture alongside feathered, fringed and tasselled lampshades, lamp bases, embroidered cushions and wall art, all encapsulating the abundantly layered aesthetic of The Transylvanian Manor.



PREMIUM QUALITY NON-WOVEN DESIGNER WALLPAPERS



The Transylvanian Manor wallpaper collection brings to life 19 abundantly patterned designs combining the impact of a mural with traditional wallpaper repeats. Beautifully ornate and very feminine, the wallpapers in this collection will take you into an imaginary journey full of florals and classical royal motifs, with colourful scenery and edenic gardens animated by stunning aviary illustrations.

RENAISSANCE INSPIRED WALLPAPER JOURNEY TO EDEN

This fabulous Renaissance style design was created as a statement wallpaper for the master bedroom of the Manor collection. It features hand coloured engravings of angels and gods and also rich ornaments created around 1700 by the German artist Johann Georg Wolfgang. Available also on linen fabric on a light blue colour option.

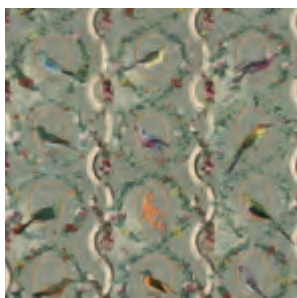


JOURNEY TO EDEN Pink
#WP20457 / printed over 3 panels

One of the original artworks made by Johann Georg Wolfgang.

COUNTESSE'S AVIARIUM

Once a must have for the noble families, the beautiful aviary at the castle was source of inspiration for this statement wallpaper featuring an imaginary bird house. Available in two colour backgrounds: neutral and mint.



COUNTESSE'S AVIARIUM Neutral
#WP20427 / printed over 3 panels



COUNTESSE'S AVIARIUM Mint
#WP20426 / printed over 3 panels



LE JARDIN SECRET
#WP20461

LE JARDIN SECRET

A sumptuous panel style wallpaper featuring decorative and grotesque oil painted elements from the house of a Dutch noble man. Inspired by Renaissance art, the wallpaper shows beautiful decorative motifs on a light blue background.



MANOR GARDENS
JARDIN SAUVAGE

One of the most exquisite wallpapers in Transylvanian Manor collection, Jardin Sauvage is our interpretation of the Renaissance-style gardens that once surrounded the Bethlen castle-manor in beautiful Transylvania. An amazing imaginary garden filled with unique and exotic depicted in a variety of hues.



JARDIN SAUVAGE
#WP20443 / printed over 3 panels

FLORAL ORNAMENT

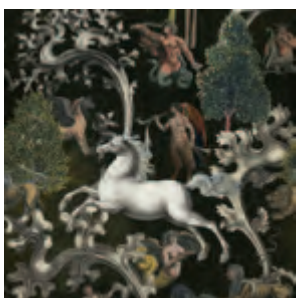
A decorative ornamental wallpaper made after an antique woodcut drawing showing beautiful roses and carnations combined with twisted link chains. An opulent pattern perfect for pairing with a statement style wallpaper design.



FLORAL ORNAMENT
#WP20453

TALES OF MITHOLOGY
IMAGINARIUM Dark

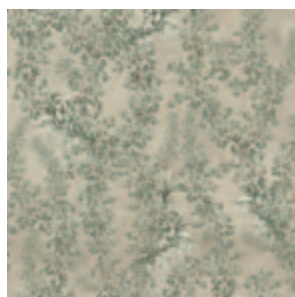
Exploring the wonderful world of mythical characters, **Imaginarium** portrays the unique beauty of some legendary creatures like centaur, chimera or sphinx joining together in a fantasy style wallpaper design.



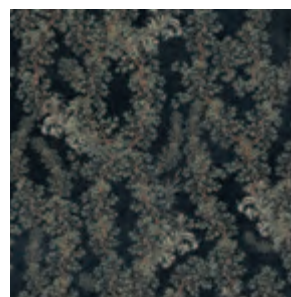
IMAGINARIUM Dark
#WP20454

ABUNDANT FOLIAGE DECOR
DARK & SOFT LEAVES

A soft foliage composition with distinctive hand painted ivy branches climbing on the wall. A neutral style wallpaper ideal for decorating all the walls in the room or to combine it with statement wall covering. Available in dark and soft tones.



SOFT LEAVES
#WP20459

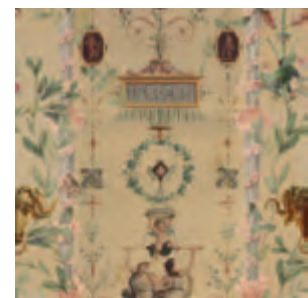


DARK LEAVES
#WP20458



FRENCH STYLE MURAL
DANCING GRACES

A beautiful French style decorative wallpaper inspired by several panels created in the late 18th century by Pierre Rousseau. This kind of wall panels were used by French royal house to decorate the walls of the castles and manors.



DANCING GRACES
#WP20460



LA VOLIERE

A statement aviary wallpaper with large scale parrots and foliage illustration recreating the look of a royal large bird cage. A pattern designed on 3 rolls for maximising the pattern repetition. Available in two colour options - Green and Indigo - and also on velvet fabric on a dark background.



LA VOLIERE Green
#WP20438 / printed over 3 panels



LA VOLIERE Indigo
#WP20435 / printed over 3 panels



SAVAGE LEAVES

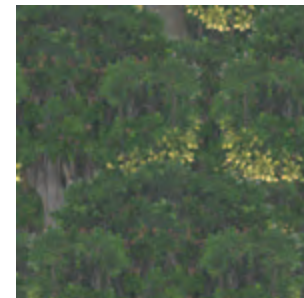
Beautiful hand coloured wallpaper design showing detailed leaves and branches of a secular oak tree. The beauty of this stylish design comes by the richness of the green shades. Available in three colour option - a light green duotone, full coloured and neutral.



SAVAGE LEAVES Green
#WP20445



SAVAGE LEAVES Neutral
#WP20467

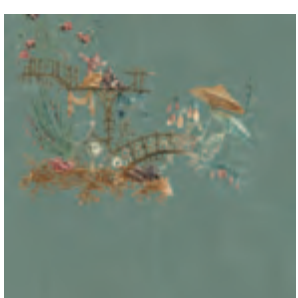


SAVAGE LEAVES Full Coloured
#WP20466

DECORATIVE FRENCH STYLE CHINOISERIE



A very delicate and sophisticated wallpaper design featuring some French style Chinoiserie hand drawings made by Jean Pillement at the end of 18th century. Available in two colour options: moss green and coconut white and also on velvet fabric in a different hue.



CHINOISERIE Blue
#WP20437



CHINOISERIE Coconut
#WP20464



TRANSYLVANIAN SCENIC LANDSCAPE FAIRYLAND

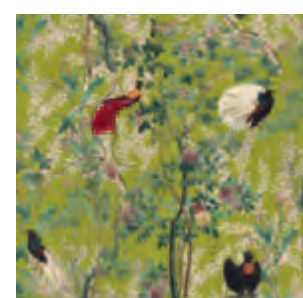
An impressive mural style wallpaper depicting an illustrated fairyland view with a large scale wall made of superposed architectural columns and in the background a stunning countryside scenery. A depiction of what we imagined to be the landscape around the Transylvanian Manor.



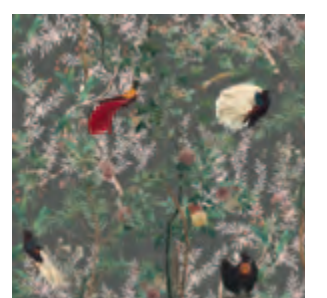
FAIRYLAND
#WP20455 / printed over 3 panels

ROYAL GARDEN

A wallpaper masterpiece design with stunning birds of Paradise illustrated on a idylic background full of blooming branches. A rich coloured illustration with beautiful details made on 3 rolls. Available on two different colour options - Green Sheen and Grey - and also as a home fabric printed on English cotton pile velvet.



ROYAL GARDEN Green
#WP20465 / printed over 3 panels



ROYAL GARDEN Grey
#WP20456 / printed over 3 panels



MINDTHEGAP wallpapers are designed and made in our studio in Transylvania. Produced only on premium quality non-woven substrate, the wallpapers are printed with eco-friendly odourless ink. All our wallpapers comes in a standard size of 0,52cm x 300cm (20.5x118.1 inch) length and is marketed as a 3 rolls in a box. With one box you can cover 4.65 square meters (16.8 square feet). Some of our designs are made on 3 rolls in order to obtain a larger pattern repetition.



BRITISH COTTON VELVET LUXURIOUS CUSHIONS

Finished with high-quality trimmings and 100% duck feathers filling



Our distinctive cushions show sophisticated motifs and patterns capturing beautiful details of our designs. Made of English cotton pile velvet and stone washed linens, all our cushions are handcrafted in Transylvania with beautiful trimmings and finishing details. In this collection, most of the cushions are double sided with one patterned side and the other one being embroidered with intricate large scale designs. Each cushion comes with 100% duck feathers filing to keep a good shape for long time.

LUXURIOUS VELVET CUSHION
LA VOLIERE

A statement aviary inspired design with painterly illustrated parrots and foliage decor recreating the look of a royal precious bird cage. Made of English cotton velvet, the cushion is finished with black tassels and comes with 100% duck feathers filing.

LA VOLIERE
50x50cm / #LC40053

ENGLISH VELVET CUSHION
ROYAL GARDEN Pink

A rich botanical pattern with stunning birds of Paradise illustrated on a idilic background full of blooming branches. Made of English cotton velvet, the cushion is decorated with black tassels and comes with 100% duck feathers filing.



ROYAL GARDEN Pink
50x50cm / #LC40055

ENGLISH VELVET CUSHION
ROYAL GARDEN

A rich botanical pattern with stunning birds of Paradise illustrated on a idilic background full of blooming branches. Made of English cotton velvet, the cushion is decorated with black tassels and comes with 100% duck feathers filing.

ROYAL GARDEN
50x50cm / #LC40056

CHINOISERIE
LUXURIOUS VELVET CUSHION

A delicate and sophisticated pattern design featuring some French style Chinoiserie artwork made by Jean Pillement at the end of 18th century. Made of English cotton velvet, the cushion is decorated with burnt gold tassels and comes with 100% duck feathers filing.



CHINOISERIE
50x50cm / #LC40054

Made in Europe of natural velvet and linen fabrics
EMBROIDERED CUSHIONS

SPANISH EMBROIDERY
PREMIUM EMBROIDERED CUSHION

A statement designer cushion with a bold Spanish style embroidery patch on one side and with Royal Garden velvet fabric on the other side. Made of English cotton velvet, the cushion is finished with black tassels and comes with 100% duck feathers filing.



SPANISH EMBROIDERY / ROYAL GARDEN Green double sided cushion
50x50cm / #LC40045



MANOR CREST / LA VOLIERE Anthracite double side cushion
50x50cm / #LC40043

PREMIUM EMBROIDERED CUSHION
MANOR CREST

A beautiful outstanding cushion made on one side of a beautiful crest embroidery inspired by an old Transylvanian noble family. On the other side made of La Voliere luxurious cotton velvet fabric, the cushions is finished with black tassels and comes with 100% duck feathers.

PREMIUM EMBROIDERED CUSHION
BIRDS OF THE GARDEN

A statement cushion made on one side with a stunning large scale embroidery showing 2 crane birds and a beautiful royal rosette ornament. On the other side the cushion is made of Chinoiserie velvet fabric. Finished with burnt gold tassels, the cushion comes with 100% duck feathers filing.



BIRDS OF THE GARDEN / CHINOISERIE double sided cushion
50x50cm / #LC40058

ORNAMENTAL HERALDRY
PREMIUM EMBROIDERED CUSHION

Ornamental heraldry patch embroidered on black cotton velvet on one side and the other side made of The Manor linen fabric. The cushion is finished with assorted piping and comes with 100% duck feathers filing.



ORNAMENTAL HERALDRY / THE MANOR
double sided cushion / 50x50cm / #LC40042



GEMME EMBROIDERY / ROYAL GARDEN Pink
double sided cushion / 50x50cm / #LC40059

PREMIUM EMBROIDERED CUSHION
GEMME EMBROIDERY

A beautiful double sided cushion made of natural velvet. On one side a sophisticated antique gem embroidery decorates the cushion and the other side is made of Royal Garden Pink English velvet. Finished with black tassels on corners, the cushion comes with 100% duck feathers filing.

STONEWASHED 100% NATURAL
LINEN CUSHIONS

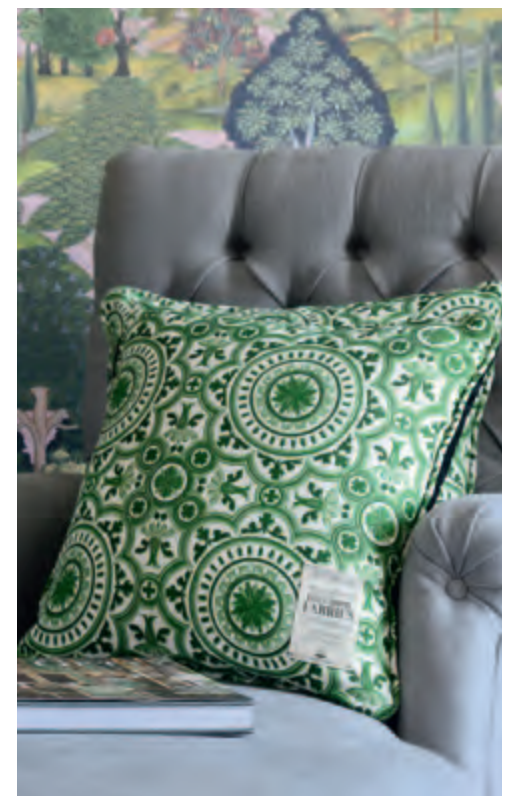
Made with 100% duck feathers filing

STONEWASHED LINEN CUSHION
JOURNEY TO EDEN

A fabulous Renaissance style design features hand coloured engravings of angels and gods in a imaginary travel to Eden. Made of stonewashed linen, the cushion is finished with burnt gold tassels and comes with 100% duck feathers filing.



JOURNEY TO EDEN
50x50cm / #LC40052



THE MANOR

STONEWASHED LINEN CUSHION

A very old wall tile design originally from Spain with a brilliant opulence, a delicate bas-relief pattern with thin ridges outlining the motif. Made of stonewashed linen, the cushion is decorated with assorted piping and comes with 100% duck feathers filing.

THE MANOR
50x50cm / #LC40057

HANDCRAFTED PREMIUM QUALITY
FINE ART PRINTS

Printed on linen or lithographic paper and framed with English wooden mouldings



ANCIENT JAPANESE ART
KASUGA MANDALA



Made after a stunning gold on silk Japanese artwork, Kasuga Mandala shows a deer riding on a rolling cloud wearing a brightly coloured saddle. The painting dating around 1333 was likely created for an individual's personal devotions to the Kasuga deities. Framed with Lincoln black frame and antique gold slip.



KASUGA MANDALA
70x150cm / #FA13149
50x100cm / #FA13177

GEISHA GIRL
SCOTTISH PORTRAITURE ART

An impressive portrait painting made by Scottish artist George Henry depicting a beautiful Geisha girl with a sparkling appearance. The rich surface patterns contribute to the painting's decorative character. Interest in such themes was stimulated in Glasgow by an exhibition of Oriental art held in the city in 1882. The artwork comes framed with Lincoln black frame and golden slip.



GEISHA GIRL by George Henry
70x100cm / #FA13176



ITALIAN PORTRAITURE ART
THE NYMPY

The Nymph is actually the painted portrait of Simonetta Vespucci, the mistress of Giuliano de Medici, attributed to the famous artist Sandro Botticelli. Shown in profile, the young woman with pendant on her necklace also places her in the immediate circle of the Medici, imitating a famous ancient cameo which was in that family's collection. Framed with Lincoln black frame and golden slip.



THE NYMPY by Sandro Botticelli
100x150cm / #FA13148



JAPANESE FOLDING SCREEN ART
PAULOWNIAS AND CHRYSANTHEMUMS

A beautiful diptych artwork inspired by an old Japanese hand painted folding screen made by Sakai Hoitsu. The painting is depicting a familiar landscape with Paulownia and Chrysanthemum flowers on a gilded paper background. Framed with contemporary black frame and white slip.



PAULOWNIAS AND CHRYSANTHEMUMS I
60x120cm / #FA13150



PAULOWNIAS AND CHRYSANTHEMUMS II
60x120cm / #FA13151



LA MORETTA by Felice Boscaratti
80x100cm / #FA13147

ITALIAN MASQUERADE ART
LA MORETTA

La Moretta is the name used for the Venetian mask of seduction reserved exclusively for women. This beautiful oil on canvas painting made by Italian artist Felice Boscaratti comes printed on archival grade paper finished with Lincoln black frame and white slip.



ROYAL TAPESTRY
60x120cm / #FA13173

FRAMED TEXTILE ART
ROYAL TAPESTRY

An ancient woven textile design originally from Egypt or Syria, the symmetrical pattern displays back-to-back green parrots with branches in their beaks and two speckled birds perched on the leaves of a long-stemmed palmette. Printed on natural linen, the cloth is finished with frayed edges and mounted on top of the mount board decorated with contemporary black frame.



ANTIQUÉ MANUSCRIPT PRINTS
ANNA'S JEWELRY

A set of four impressive art prints showing paintings from the manuscript Jewel Book of the Duchess Anna of Bavaria. Commissioned in 1552 by Duke Albrecht V of Bavaria, the manuscript is an inventory of the jewelry owned by the duke and his wife, Duchess Anna, a member of the Habsburg dynasty and a daughter of Emperor Ferdinand I. Printed on lithographic paper, the artworks are framed with contemporary black frame and white slip.



ANNA'S JEWELRY I
50x70cm / #FA13141



ANNA'S JEWELRY II
50x70cm / #FA13142



ANNA'S JEWELRY III
50x70cm / #FA13143



ANNA'S JEWELRY IV
50x70cm / #FA13144

FRAMED TEXTILE ART
DRAGONS CHASING PEARLS



DRAGONS CHASING PEARLS
60x110cm / #FA13172

An impressive framed linen textile depicting the Chinese theme of dragons chasing pearls. This woven tapestry design is dated around 13th century and was made for use as a clothing and now printed on natural linen. Finished with frayed edges and mounted on top of the mount board, the artwork is framed with contemporary black frame and white slip.

FRAMED LINEN ART
ANCIENT TEXTILES

A stunning tapestry design with large leafy branches with palmettes, flowers and fruits. Originally made of silk, this beautiful textile artwork is printed on linen and framed with contemporary black frame and white slip.



BRITISH TAPESTRY
70x70cm / #FA13171



ANCIENT BROCADE
70x70cm / #FA13170

This luxurious furnishing fabric design have been used as wall covering or part of a long robe. The pattern of floral bouquets framed by curved leaves was popular in Italy, Spain, and Turkey during the 16th century. Printed on natural linen, the artwork is framed with contemporary black frame and white slip.



SET OF TWELVE WATERCOLOUR FRAMED PRINTS
AQUAFLORA

A set of twelve watercolour prints extracted from a botanical book called Water Colour Sketches of Plants of North America and Europe. Made by botanist Helen Sharp, each plate shows delicate soft coloured flowers with a few details about the plant. Framed with antique black and gold frame.



AQUAFLORA I
30x40cm / #FA13152
AQUAFLORA V
30x40cm / #FA13156
AQUAFLORA IX
30x40cm / #FA13160

AQUAFLORA II
30x40cm / #FA13153
AQUAFLORA VI
30x40cm / #FA13157
AQUAFLORA X
30x40cm / #FA13161

AQUAFLORA III
30x40cm / #FA13154
AQUAFLORA VII
30x40cm / #FA13158
AQUAFLORA XI
30x40cm / #FA13162

AQUAFLORA IV
30x40cm / #FA13155
AQUAFLORA VIII
30x40cm / #FA13159
AQUAFLORA XII
30x40cm / #FA13163



SET OF SIX DUTCH TEXTILE DESIGNS
DUTCH EMBROIDERY

An impressive set of six prints made on natural linen showing floral embroidery designs for textiles created by Dutch artist Senegat. Framed with eclectic white frame and white slip.



DUTCH EMBROIDERY I
50x70cm / #FA13164

DUTCH EMBROIDERY II
50x70cm / #FA13165

DUTCH EMBROIDERY III
50x70cm / #FA13166



DUTCH EMBROIDERY IV
50x70cm / #FA13167

DUTCH EMBROIDERY V
50x70cm / #FA13168

DUTCH EMBROIDERY VI
50x70cm / #FA13169



SET OF TWO FLORAL WATERCOLOUR ART
DELICATE BLOOM

A beautiful pair of floral watercolour paintings made by Dutch artist de Gijsselaar. The beauty of each artwork comes from the stunning details of the paint and the chromatic scheme used, the black background enhancing the fine points of the flowers. Framed with antique black frame and white slip.



DELICATE BLOOM I
70x90cm / #FA13145



DELICATE BLOOM II
70x90cm / #FA13146



ENGLISH PORTRAITURE ART
A VISION OF FIAMMETTA

Another romantic style portrait signed by English artist Dante Rossetti. A Vision of Fiammetta is an oil painting in the Pre-Raphaelite style depicting Maria Spartali Stillman modelled for the painting. The subject of painting is Boccaccio's muse named Fiammetta. Framed with antique gold frame and white slip.



A VISION OF FIAMMETTA by Rossetti
70x100cm / #FA13175

ENGLISH PORTRAITURE ART
LA DONNA DELLA FINESTRA

A romantic style portrait made with oil on canvas by English painter Dante Rossetti, founder of the famous Pre-Raphaelites brotherhood. The artwork depicts a woman seated at a window, looking out at the street below. This is an unfinished painting. The rich, gold hues of the work contrasts with the other versions. Framed with antique black frame and white slip.



LA DONNA DELLA FINESTRA by Rossetti
90x90cm / #FA13174

THE HOME OF AN
ECCENTRIC MAN



PREMIUM HOME COLLECTION



THE HOME OF AN ECCENTRIC MAN

The Home of an Eccentric Man is the story of a gentleman traveller, wanderer and aesthete with a lifelong passion for ethnography, anthropology and archaeology. An explorer and collector voyaging from Zanzibar to Medina and from Jaipur to the North American prairies, his endless fascination with long-lost cultures, ancestral rituals and indigenous peoples is matched only by his insatiable desire to accumulate art and artefacts from the countries and peoples with which he is so entranced.

The Home of an Eccentric Man is a dusty yet distinguished apartment filled with one-of-a-kind furniture, curiosities, ancient books and etchings, brought together by MINDTHEGAP in a magnificently eclectic home décor collection.

A tribute to the cultural evolution and heritage of mankind, the evocative collection showcases ancient wonders of the world, lost tribes, and faraway nations, from Tibetan murals to Roman marbles. Designed to transport, each pattern relates to a specific place or moment in history. Bohemian and diverse, fifteen new wallpapers combine the impact of a mural with traditional wallpaper repeats, while eight smooth-to-the-touch stone washed linens pay homage to global textiles, from African mud cloth to Navajo weaving.

Taking advantage of Transylvania's time-honoured arts and crafts skills, the collection includes neoclassical-style upholstered hardwood furniture alongside beaded and tasselled lampshades, lamp bases, embroidered cushions and framed wall art, all encapsulating the spirit and wanderlust of the Eccentric Man.

Intriguing and individual, the one-of-a-kind collection perfectly showcases MINDTHEGAP'S artistic identity, rooted in Transylvania's diverse ethnic heritage and melting pot of culture, craft and tradition.

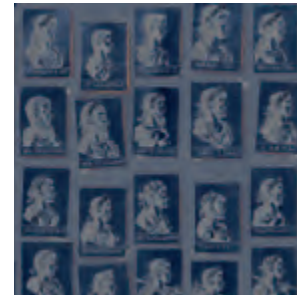


PREMIUM QUALITY NON-WOVEN
ECCENTRIC WALLPAPERS

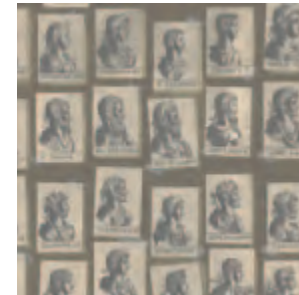


EMPERORS
ROMAN EMPIRE ICONS

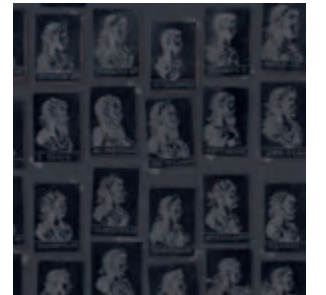
This unique wallpaper design illustrates 120 hand drawn portraits of the all Roman emperors who once lived and conquered the world. A sophisticated neutral wallpaper designed on 3 rolls for maximising the pattern repetition. Available in three colour options: anthracite, khaki and indigo.



EMPERORS Blue
#WP20462 / printed over 3 panels



EMPERORS Taupe
#WP20416 / printed over 3 panels



EMPERORS Anthracite
#WP20415 / printed over 3 panels



MAJESTIC STATUARY DESIGN
STATUES ANTIQUE

An impressive wallpaper design full of history and stunning details with illustrated famous statues after the originals that can be seen at Louvre, the French royal museum. Made on 3 panels for maximising the pattern, this wall decor is available in two colour options: orange and taupe.



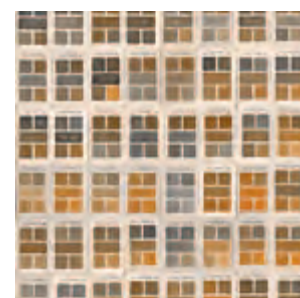
STATUES ANTIQUE
#WP20422 / printed over 3 panels



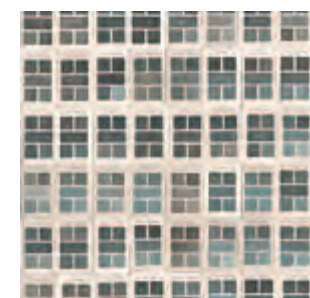
STATUES ANTIQUE Taupe
#WP20423 / printed over 3 panels

AN IMPRESSIVE COLOUR SWATCHES DESIGN
TRAITÉ DES COULEURS

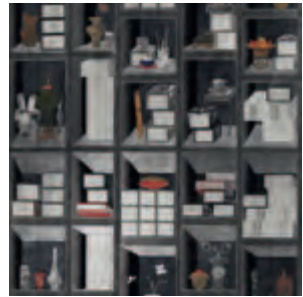
A very peculiar wallpaper design showing pages from what it seems to be the first book of colours created by A. Boogert in 1692. A one-of-a-kind design with a wide range of colour swatches hand drawn with aqua tint. Available in two versions: warm tones and greys. Printed over 3 panels.



TRAITE DES COULEURS
#WP20414 / printed over 3 panels



TRAITE DES COULEURS Neutral
#WP20413 / printed over 3 panels



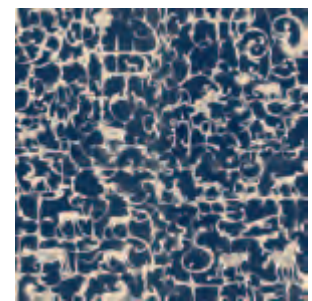
KOREAN LIBRARY
#WP20421 / printed over 3 panels

AUTHENTIC FOLDING SCREEN ART
KOREAN LIBRARY

A gorgeous trompe l'oeil wallpaper design depicting an original Korean library painted on a silk made folding screen. A statement piece of art, this unique wall covering created in the late 1800s. The design is made on 3 rolls for maximising the pattern.

ROYAL HUNTING

A very old pattern design depicting a royal hunting somewhere in the woods of Netherlands. A beautiful engraving piece of art transformed in a sophisticated wallpaper design.

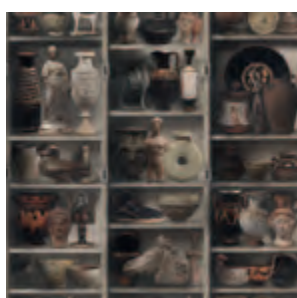


ROYAL HUNTING
#WP20420



A COLLECTION OF ARTEFACTS
GREEK POTTERY

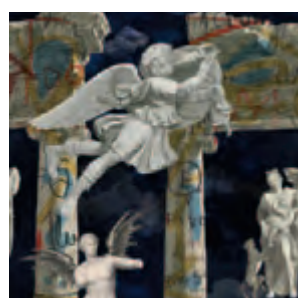
A clever shelving design wallpaper with painterly Greek pottery objects and collectable artefacts. Designed on 3 panels, Greek Pottery is an essential piece of the Home of an Eccentric Man collection depicting the aristocratic lifestyle of a wanderer.



GREEK POTTERY
#WP20417 / printed over 3 panels

SURREALIST STATUARY COLLAGE
TALES OF MYTHOLOGY

An illustrated collage of famous statues and architectural elements combined with contrasting graffiti in a very contemporary style wallpaper. A statement surrealist design with an imaginary world created by the floating statues over the dark blue cloudy background.



TALES OF MYTHOLOGY
#WP20419

THE SKETCH BOOK

VINTAGE ARCHITECTURAL DRAWINGS



A masculine style design showing a couple of vintage architectural sketches made by the French artist Charles Percier. The beauty of this wallpaper stays in all the hand drawn details made by the artist in his sketch book which are now presented in a 3 rolls wallpaper collage.



THE SKETCH BOOK
#WP20424 / printed over 3 panels



AUTHENTIC AFRICAN PATTERN
BAMANA

A traditional African style mud cloth pattern with beautiful large scale authentic design made in black and white. A very simple yet bold wallpaper pattern with handmade geometrical lines on a mud-black background.



BAMANA
#WP20410



YARMA DHARMARAJA

A bold pattern inspired by the rich Tibetan culture. An important protector in Buddhism, Yama is Lord of the realm of Hell and he is depicted here with gods and mystical animals in a very particular Asian style design. Available in two different hues: dark and light



YARMA DHARMARAJA
#WP20451



YARMA DHARMARAJA Light
#WP20452

ORIGINAL TRIBAL AFRICAN PATTERN
BUSHOONG KUBA



An original Kuba people design hand-woven on raffia cloth. This tribal style pattern was created by using an original piece of Bushoong Kuba cloth, especially to achieve the original irregular look of the hand-woven fabric.



BUSHOONG KUBA
#WP20411



ZULU ANIMAL PRINT
IDUBE

A statement wallpaper design with large scale Zebra pattern and realistic fur texture. Part of our African inspired collection, IDUBE means zebra in Zulu tribe language, this animal being a central piece in the ancient culture of this people.

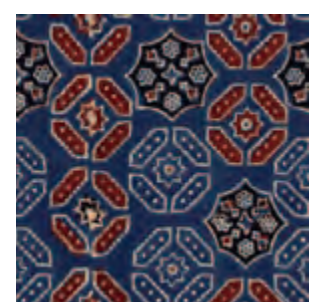


IDUBE
#WP20418

AJRAK
AUTHENTIC BLOCK PRINT



A stunning ancient wood block print with deep indigo hues combined with red and white inserts. A remake of an original fabric pattern made by the people of the old Sindhi culture in Pakistan.



AJRAK Blue
#WP20412



MURALS OF TIBET
TIBETAN TAPESTRY

Inspired from the hidden world of Tibet, this statement design is a tribute dedicated for the marvellous murals of Tibet. Designed on 3 panels, TIBETAN TAPESTRY shows large scale gods and Asian deities in a unique painterly style wallpaper created from authentic Tibetan murals.



TIBETAN TAPESTRY Metallic Edition
#WP20450 / printed over 3 panels



SUPERIOR QUALITY STONE WASHED
AUTHENTIC LINENS

Made of 100% natural large thread fibers



Our Eccentric Man fabric collection introduces 8 unique designs inspired by global textiles, from African mud cloth or Uzbek ikats to Navajo weaving and Pakistani Ajrak. Made of 100% natural linen, our fabrics are heavy weight and stone washed for more softness. Ideally to be used for upholstered furniture, curtains or cushions, our fabrics have a rustic texture with an authentic vintage feel.

STONEWASHED HEAVY LINEN
EYEDAZZLER NAVAJO

An outstanding design inspired by an original woven carpet pattern made by Navajo people. A homage to the tradition and rich culture of one of the largest tribes of North American Indians.

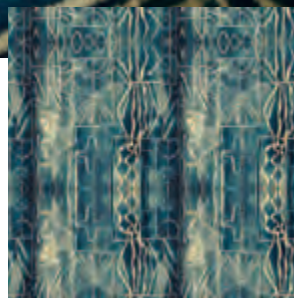


EYEDAZZLER NAVAJO
#FB00023



STONEWASHED HEAVY LINEN
BAMILEKE

A vintage design that explores different shades of blue crossed with light lines inspired from the culture of a native group dominant in Cameroon called Bamileke.



BAMILEKE
#FB00022

AJRAK

STONEWASHED PURE LINEN

A stunning deep indigo design with black and white geometric inserts inspired by the wood block printed cloths made by people of the ancient Sindhi culture in Pakistan.

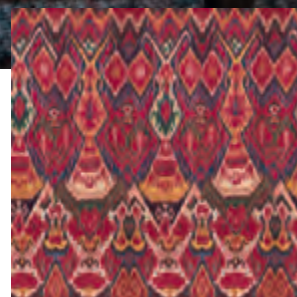


AJRAK
#FB00020



STONEWASHED HEAVY LINEN
UZBEK IKAT

A beautiful multicolour design inspired by the tradition of handwoven Uzbekistan ikat silks with their bold colours and nomadic patterns.



UZBEK IKAT
#FB00024

PATOLA

STONEWASHED PURE LINEN

An outstanding design, representing a woven sari with an attractive pattern from western India.



PATOLA
#FB00010



STONEWASHED HEAVY LINEN BOGOLANFINI

A dark contrasting design inspired from the ancient handmade Malian fabric, traditionally dyed with fermented mud.



BOGOLANFINI
#FB00021

STONEWASHED PURE LINEN

HINDUSTAN Aquamarine

A marvelous pattern representing the beautiful world of Hindustan on a pale blue background.



HINDUSTAN Aquamarine
#FB00011



LAKAI

STONEWASHED HEAVY LINEN

A vintage style fabric design showing a beautiful handwoven pattern made by the ancient nomadic people.

LAKAI
#FB00004





HANDCRAFTED PREMIUM QUALITY
FINE ART PRINTS
Made of finest natural linen and lithographic paper



PEACEFUL PLACE
90x90cm / #FA13133

FRAMED LINEN ART
PEACEFUL PLACE

Peaceful Place is a classic Chinese artwork of Ma Lin depicting a symbolic landscape with a great pine tree and rocks. Printed on natural linen, the artwork comes framed with contemporary grey frame and white slip.

FRAMED LINEN ART
ESTUARY

Another beautiful Chinese landscape painting dating around 1127 depicting a scenery estuary somewhere near Xiantang mountain. Printed on linen, the artwork is framed with contemporary grey frame and white slip.



ESTUARY
90x90cm / #FA13139

FRAMED LINEN ART
SHICHIRI GA HAMA

A stunning scenery artwork by Hokusai with a view of a mountainous coastal strip with trees and houses on the water and with the snowy mountain Fuji in the background. Printed on linen, the artwork is framed with contemporary grey frame and white slip.



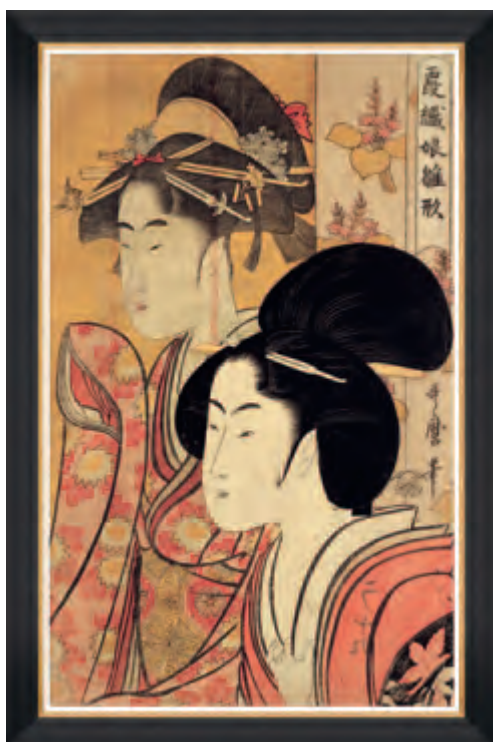
SHICHIRI GA HAMA by Hokusai
100x70cm / #FA13134

PREMIUM FRAMED PRINTS
JAPANESE EDO PORTRAITS



KUSHI by Kitagawa Utamaro
70x100cm / #FA13121

An expressive portrait artwork made by Japanese artist Kitagawa Utamaro depicting a beautiful courtesan looking through a clear glass comb. Finish with Lincoln black frame and antique gold slip.



TWO BEAUTIES by Kitagawa Utamaro
70x100cm / #FA13122

A beautiful colour woodblock print made by the Japanese artist Kitagawa Utamaro around 1795, Edo period. Depicting two beautiful courtesans posing with bamboo hairpins. Finished with Lincoln black frame and antique gold slip.

PREMIUM FRAMED PRINTS
POMPEII WALL FRESCO

An original wall painting from the ancient city of Pompeii depicting a queen and his daughter. Founded in the villa of Fannius Synistor in Boscoreale, this fresco art is dated around 40 before Christ. Framed with contemporary black frame and archival grade mountboard.

Another stunning fresco art from the villa of Boscoreale showing the ruler of the house and his wife seating side by side. Framed with contemporary black frame and archival grade mountboard.



POMPEII WALL FRESCO I
70x70cm / #FA13123



POMPEII WALL FRESCO II
70x70cm / #FA13124

SET OF TWO FRAMED ETCHINGS
EQUESTRIAN ART

A set of two beautiful etchings depicting equestrian sculptures made by Italian artist Dominico Marchetti. Finished with antique black frame and white slip.



CAVALLO by Dominico Marchetti
90x80cm / #FA13112

CAVALLO NERO
90x80cm / #FA13111

SET OF NINE ANTIQUE PRINTS
ANTIQUÉ URN

A set of nine remarkable engravings coming from a famous work entitled Vasi, Candelabri, Cippi, Sacrofagi, Tripodi Lucerne ed ornamenti antichi made by Italian artist Giovanni Battista Piranesi. Framed with contemporary grey frame and white slip.



ANTIQUÉ URN I
45x60cm / #FA13102

ANTIQUÉ URN IV
45x60cm / #FA13105

ANTIQUÉ URN VII
45x60cm / #FA13108

ANTIQUÉ URN II
45x60cm / #FA13103

ANTIQUÉ URN V
45x60cm / #FA13106

ANTIQUÉ URN VIII
45x60cm / #FA13109

ANTIQUÉ URN III
45x60cm / #FA13104

ANTIQUÉ URN VI
45x60cm / #FA13107

ANTIQUÉ URN IX
45x60cm / #FA13110

SET OF FOUR FRAMED ETCHING PRINTS
GREEK GODESS AND GODS

A set of four antique etching prints depicting famous Greek gods like Adonis, Flora, Apollo and Venus. Finished with antique black frame and white slip.



GREEK GODESS AND GODS - ADONIS
60x80cm / #FA13113



GREEK GODESS AND GODS - APOLLO
60x80cm / #FA13114



GREEK GODESS AND GODS - VENUS
60x80cm / #FA13116



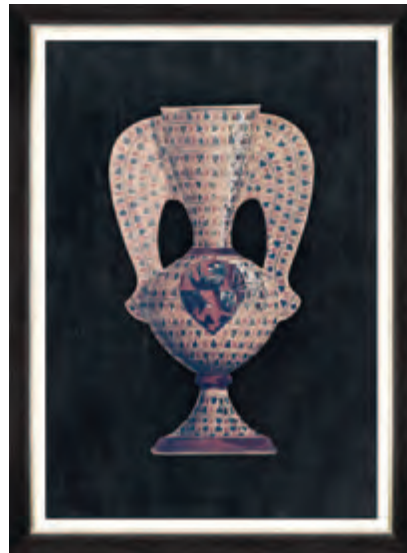
GREEK GODESS AND GODS - FLORA
60x80cm / #FA13115

SET OF FOUR DECORATIVE PAINTINGS
ARABIAN VASES

A beautiful set of four decorative artworks showing stunning hand decorated Arabian ceramic vases. Framed with contemporary black frame and white slip.



ARABIAN VASES I
50x70cm / #FA13127



ARABIAN VASES II
50x70cm / #FA13128



ARABIAN VASES III
50x70cm / #FA13129



ARABIAN VASES IV
50x70cm / #FA13130



SET OF FOUR DAGUERRETYPE PRINTS
NAVAJO MASKS



HASCHEZHINI
60x80cm / #FA13117

A statement fine art print by Edward Curtis showing a man in Navajo (Diné) ceremonial garb depicting Haashch ééshzhini (Black God), the fire god in Navajo tradition. Finished with contemporary black frame and white slip.



ZAHADOLZHA
60x80cm / #FA13120

A statement fine art print of a Navajo mask depicting Zahadolzha (Fringe Mouth), a benevolent water spirit. According to Navajo culture, Fringe Mouth is thanked if someone is rescued from drowning. Finished with contemporary black frame and white slip.



NAVNEZGANI NAVAJO
60x80cm / #FA13119

A statement artwork showing a mask depicting Naayéé' neizghání (the Enemy Slayer), one of the hero twins central to Navajo mythology. The more aggressive of the twins, Naayéé' neizghání wore black flint armor that sparkled with lightning. Finished with contemporary black frame and white slip.



HASCHOGAN MASK NAVAJO
60x80cm / #FA13118

A statement fine art print by Edward Curtis showing a Navajo man, half-length, seated, facing front, wearing a ceremonial mask called Haschogan (House God) with feathers and with fir or spruce branches forming a wreath around the shoulders. Finished with contemporary black frame and white slip.

VINTAGE DUTCH ART
AFRICAN PORTRAITS

A set of two large size framed prints showing beautiful portraits of African people painted by Dutch artist Albert Eckhout. Framed with Lincoln black frame and golden slip.



AFRICAN MAN by Eckhout
70x100cm / #FA13100



WOMAN AND CHILD by Eckhout
70x100cm / #FA13101



SET OF FOUR PHOTOGRAPHIC PRINTS
EQUITATION

A set of four equestrian photographic prints with beautiful shades and colours capturing the details of the horse harnesses. Framed with contemporary black frame and white slip.



EQUITATION I
60x80cm / #FA13135



EQUITATION II
60x80cm / #FA13136



EQUITATION III
60x80cm / #FA13137



EQUITATION IV
60x80cm / #FA13138





TRADITIONALLY EUROPEAN CRAFTED HARDWOOD
UPHOLSTERED FURNITURE

Made of heavy weight natural linens and velvet fabrics



LUXURIOUS TUFTED LOUNGE CHAIR
MADISON CHAISE

This statement chaise features rollover arms and a sophisticated silhouette enhanced by the tufted backrest. Designed to add both elegance and function to your space, it is crafted from beech wood and upholstered in a soft, foam filled for the utmost relaxation. Tapered, grey washed finished legs and gold castors complete the look.



MADISON CHAISE
#FR00024

FRENCH STYLE DINING
PROVENCE CHAIR



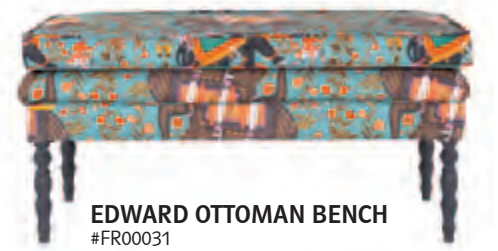
PROVENCE DINING CHAIR
#FR00033

A neo-classic style dining chair, Provence is as beautiful furniture piece shaped with a slightly curved back and pointed wing tips, finished with decorated turned legs in distressed paint.



DOUBLE CUSHION UPHOLSTERED
EDWARD BENCH

A precious style ottoman bench finished with luxurious double cushion upholstered seat and contrasting distressed turned legs, the extra squab creating the ultimate comfort. Available also with button tufted finishing.



EDWARD OTTOMAN BENCH
#FR00031



MORROCCAN STYLE OTTOMAN
FEZ TUFTED

A small round ottoman inspired by the Moroccan style with tufted seat and turned wooden legs in brushed grey colour. Finished with antique brass castors for an eclectic look.

FEZ TUFTED OTTOMAN
#FR00023

BRYANT

CLASSIC STYLE WING CHAIR

A classic design of armchair with high comfortable back, rollover arms, sited on beech wood tapered legs.



BRYANT Wing Chair
#FR00020

CUBE STOOL DUBOIS TUFTED OTTOMAN

A classic style square ottoman with tufted seat and turned shape beautiful wooden legs in washed grey finish.



DUBOIS TUFTED OTTOMAN
#FR00028

ANTIQUÉ STYLE CHAIR LOUIS DECONSTRUCTED

Deconstructed low seat chair with beech wood open back frame, turned wooden legs with burlap linen on the back and vintage frame finishing.



PREMIUM TUFTED LOWSEAT CHAIR ST GERMAINE

A stylish French style low seat armchair with overstuffed and tufted backrest and arms for an absolute comfort. Finished with turned legs in vintage brushed wood and black metallic castors.



ST GERMAINE TUFTED CHAIR
#FR00027



LOUIS DECONSTRUCTED CHAIR
#FR00021



WINSTON TUFTED SOFA
#FR00026

PREMIUM CHESTERFIELD STYLE SOFA WINSTON TUFTED

A three-seater comfortable sofa, Winston is a contemporary remake of the classic Chesterfield design, with tufted backrest and front panel, scrolled arms and metallic stud detailing. Finished with turned short type legs finished in black lacquered colour.



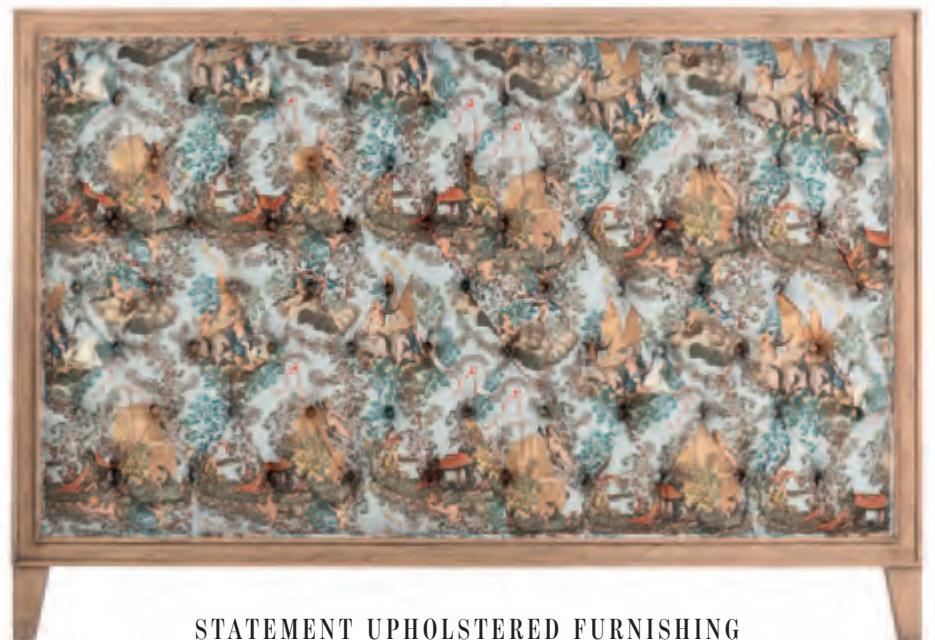


BED FRAME WITH HEADBOARD
#FR00047 / #FR00046

DISTRESSED PINWOOD BED FRAME

ANTAL

A beautiful Transylvanian style massive pinewood bed frame coming with a vintage distressed finish for an authentic look. Inspired by the old style beds which can be found in the country side houses in Transylvania. Available in one size.



STATEMENT UPHOLSTERED FURNISHING

TUFTED HEADBOARD

A stylish handcrafted headboard made of distressed pinewood turned frame and a beautiful upholstered tufted board. Available with all our fabric designs.

TUFTED HEADBOARD
#FR00046



ABIGAIL SOFA
#FR00039

ABIGAIL SOFA

FABULOUS COMFORTABLE LOVESEAT

This is a statement for comfort two-seater sofa with one piece upright back, slight rollover arms and tapered medium legs. The high large comfortable cushions and soft corners makes this sofa a contemporary must-have design piece.

TWO SEATER FRENCH STYLE

BARON TUFTED SOFA

A classic, two seater French style sofa with an upright button tufted back and beautiful crescent arms. The comfortable stuffed cushion and distressed tapered legs completes this sophisticated piece of furnishing.



BARON TUFTED SOFA
#FR00041