



PLAYING GAMES

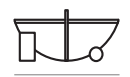
COFFE TABLE

The essential shapes of these tables play between them in an alluring game of proportion and color which results in the creation of a perfect balance and tension of material and negative space. The absence of figurative shapes allows you to look at this piece from different angles and imagine various things.

Top	Marble: Estremoz White, Estremoz Rose, Guatemala Green and Carrara
Center base	Marble: Guatemala Green, Estremoz White, Estremoz Rose, Nero Marquina, Emperador and Carrara
Cilindric base	Marble: Guatemala Green, Estremoz White, Estremoz Rose, Nero Marquina, Emperador and Carrara
Metal base	Polished or Satin: Brass, Copper or Nickel



168 cm | 71 in



80 cm | 32 in

32 cm | 13 in

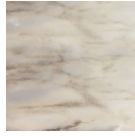
// as pictured

Top – Estremoz White Marble
 Center base – Guatemala Marble
 Cilindric base – Nero Marquina Marble
 Metal base – Satin Brass

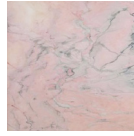
MARBLES
FOR TOP



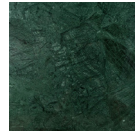
Carrara



Estremoz
White

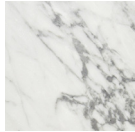


Estremoz Rose

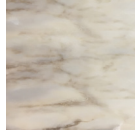


Green
Guatemala

MARBLES
FOR SIDE AND
CYLINDRICAL
BASE



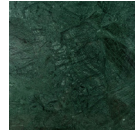
Carrara



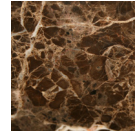
Estremoz
White



Estremoz Rose



Green
Guatemala



Emperador



Nero Marquina

METALS
FOR BASE



Polished
Nickel



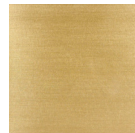
Polished
Brass



Polished
Copper



Satin
Nickel



Satin
Brass



Satin
Copper