



Limited edition

## NEWTON

CONSOLE

Defying laws of physics, this futuristic piece of furniture has been designed by taking inspiration from its elder brother – Newton dining table. Newton console is a standout piece of international desire that distinguishes itself from all the other designs by its futuristic forms.

**Product features:** Console composed by metallic spheres and semi spheres joined together.

**Arts and Techniques:** Joinery, Foundry, Lacquering, Varnishing and Polish.

**Materials and Finishes:** Aluminum, Black Lacquer and Gold Plated.

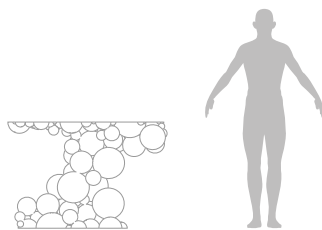
**Product Options:** Limited Edition. Singular Products.

**Customization:** Custom sizes and colors are available with an upcharge.

**Observations for mounting:** Pads on the base to protect the support area.

**Clean and Care:** Dry cloth.

### TECHNICAL INFO



#### DIMENSIONS

Width: 128cm (50,4 in.)

Depth: 48cm (18,9 in.)

Height: 85cm (33,5 in.)

 1 box

 125 (275,6lbs)

 0,80

### EXPLORE MORE



. WEBSITE .



. CATALOGS .



. FINISHES .

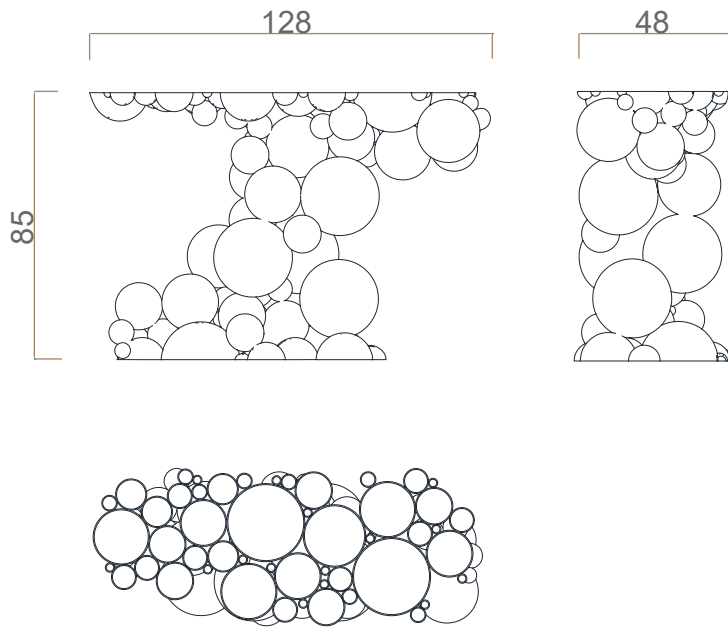


. PRESS EDITORIAL .



. VIDEOS .

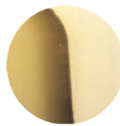
+351 910 936 335  
+351 224 887 170  
Info@bocadolobo.com



*limited edition*  
**NEWTON**  
CONSOLE

MATERIALS & FINISHES

STANDARD



GOLD PLATED

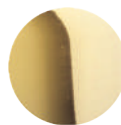


BLACK LACQUER  
W. GLOSS

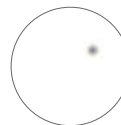


NEWTON TOP  
TEXTURE

PRODUCT OPTIONS



GOLD PLATED



WHITE LACQUER  
W. GLOSS

Custom colors and finishes are available with an upcharge.  
Please contact [info@bocadolobo.com](mailto:info@bocadolobo.com)