



MISSANA

**Fabric  
Groups**

# FEBRIK

## FABRICS UNDER STANDARD PRODUCTION SCHEDULE

DROP  
RAZZLE DAZZLE  
SPRINKLES  
TRIANGLE  
UNIFORM MÉLANGE

## GROUP

G  
G  
G  
H  
F

## FABRICS UNDER SPECIAL PRODUCTION CONDITIONS

\*For more info and production  
lead time please check with us.

APPAREIL  
CROSS  
GENTLE  
MOSAIC  
SHADE  
STITCH  
SUMMIT  
Twill  
UNIFORM

H  
H  
H  
H  
G  
H  
H  
F  
F

# GABRIEL

## FABRIC

ATLANTIC  
ATLANTIC BUBBLES  
ATLANTIC STRIP W40  
BREEZE FUSION  
CHESS ROYAL  
COMFORT +  
COMFORT + STRIPE W40  
COMFORT+ BUBBLES  
EUROPOST 2  
EUROPOST WELDED  
FAME  
FLEX  
FLEX - BUBBLES  
GO CHECK  
GO COUTURE  
HARLEQUIN  
NEMO  
OMEGA  
STEP  
STEP MELANGE

## GROUP

D  
G  
G  
G  
G  
H  
I  
Upon request  
E  
H  
E  
E  
G  
E  
E  
E  
E  
F  
F  
D  
E

# VARIOUS

## FABRIC

DAKOTA SUEDE II  
ROADSTAR  
ASTON  
TRUMAN  
HORACE  
MOUTON  
WALLY  
RIBCORD  
172/11  
MERLIN

## GROUP

D  
Leather  
D  
D  
D  
D  
C  
C  
D  
E

CLOUD FR	G
SAHARA II	D
GOTHENBURG	D
MAGMA	F
COURSE	D

## KVADRAT

### FABRIC

BRIGHT GIRD  
CANVAS 2  
CLARA  
CODA 2  
DIVINA 3  
DIVINA MD  
DIVINA MELANGE 2  
FIORD  
GALAXY  
HALLINGDAL 65  
HARALD 3  
HERO  
PINE  
RECHECK  
REMIX 2  
REVIVE 1 - 2  
RIME  
SCUBA  
STAR 2  
STEELCUT 2  
STEELCUT TRIO 3  
TONICA 2  
TONUS 4  
UNAMI  
UNAMI 2 - 3  
VIDAR 3  
WATERBORN

### GROUP

H  
F  
E  
H  
G  
G  
G  
F  
F  
G  
F  
G  
E  
F  
F  
E  
F  
E  
F  
F  
F  
F  
F  
E  
E  
H  
H



MISSANA

**Febrik  
Fabrics**

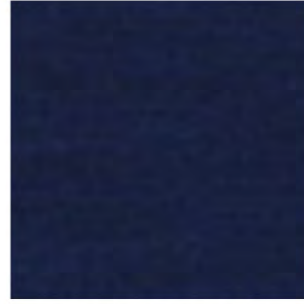
# FEBRIK



UNIFORM MELANGE CORAL  
(Group F)



UNIFORM MELANGE FIG  
(Group F)



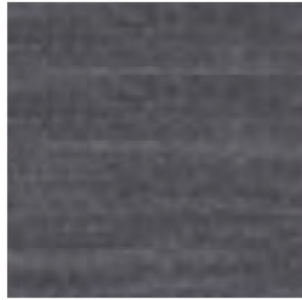
UNIFORM MELANGE INK  
(Group F)



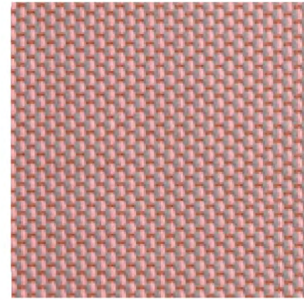
UNIFORM MELANGE OASE  
(Group F)



UNIFORM MELANGE RASPBERRY  
(Group F)



UNIFORM MELANGE STONE  
(Group F)



DROP COTTONCANDY  
(Group G)



DROP GUMMYBEAR  
(Group G)



DROP JELLY  
(Group G)



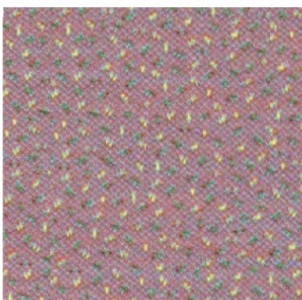
DROP WINEGUM  
(Group G)



RAZZLE DAZZLE HONEY  
(Group G)



RAZZLE DAZZLE RANGER  
(Group G)



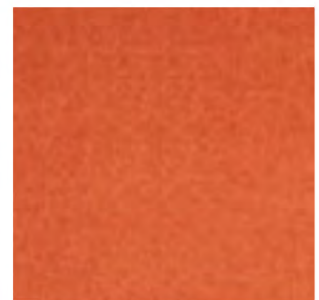
SPRINKLES CHAFFINCH  
(Group G)



SPRINKLES PARROT  
(Group G)



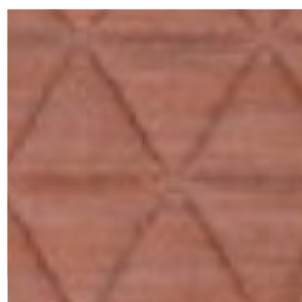
SPRINKLES SUNBIRD  
(Group G)



GENTLE ORANGE  
(Group H)



TRIANGLE BLUEBERRY  
(Group H)



TRIANGLE BLUSH  
(Group H)

## IMPORTANT NOTE

### FABRICS UNDER STANDARD PRODUCTION SCHEDULE:

DROP, RAZZLE DAZZLE, SPRINKLES, TRIANGLE & UNIFORM MÉLANGE

### FABRICS UNDER SPECIAL PRODUCTION CONDITIONS

**\*For more info and production lead time please check with us.**

APPAREIL, CROSS, GENTLE, MOSAIC, SHADE, STITCH, SUMMIT, TWILL, UNIFORM

### UNIFORM MELANGE (Group F)

#### Composition — Composición

68% wool 22% polyamide 10% polyester

#### Width — Ancho

165 cm

#### Weight — Peso

490 gr/m<sup>2</sup>

#### Abrasion — Abrasión

> 80.000 Martindale

#### Lightfastness — Solidez a la luz

6

#### Fire test — Test al fuego

EN 1021-1/2 — BS 5852 part 1

DIN 4102-B2 — US Cal. Tech. Bull. 117

IMO FTP Code part 8

#### Care — Mantenimiento



### DROP (Group G)

#### Composition — Composición

60% wool 20% polyamide 20% polyester

#### Width — Ancho

160 cm

#### Weight — Peso

600 gr/m<sup>2</sup>

#### Abrasion — Abrasión

> 80.000 Martindale

#### Lightfastness — Solidez a la luz

6 - 7

#### Fire test — Test al fuego

EN 1021-1/2 — BS 5852 part 1

DIN 4102-B2 — US Cal. Tech. Bull. 117

#### Care — Mantenimiento



### RAZZLE DAZZLE (Group G)

#### Composition — Composición

60% wool 20% polyamide 20% polyester

#### Width — Ancho

160 cm

#### Weight — Peso

600 gr/m<sup>2</sup>

#### Abrasion — Abrasión

> 80.000 Martindale

#### Lightfastness — Solidez a la luz

6

#### Fire test — Test al fuego

EN 1021-1/2 — BS 5852 part 1

DIN 4102-B2 — US Cal. Tech. Bull. 117

#### Care — Mantenimiento



### SPRINKLES (Group G)

#### Composition — Composición

30% wool 10% polyamide

20% polyester 40% polyester filling

#### Width — Ancho

160 cm

#### Weight — Peso

670 gr/m<sup>2</sup>

#### Abrasion — Abrasión

> 60.000 Martindale

#### Lightfastness — Solidez a la luz

7

#### Fire test — Test al fuego

EN 1021-1/2 — BS 5852 part 1

DIN 4102-B2 — US Cal. Tech. Bull. 117

#### Care — Mantenimiento



### GENTLE (Group H)

#### Composition — Composición

60% wool 20% polyamide 20% polyester

#### Width — Ancho

175 cm

#### Weight — Peso

650 gr/m<sup>2</sup>

#### Abrasion — Abrasión

> 80.000 Martindale

#### Lightfastness — Solidez a la luz

7

#### Fire test — Test al fuego

EN 1021-1/2 — BS 5852 part 1

DIN 4102-B2 — US Cal. Tech. Bull. 117

#### Care — Mantenimiento



### TRIANGLE (Group H)

#### Composition — Composición

17% wool 5% polyamide

13% polyester 65% polyester filling

#### Width — Ancho

165 cm

#### Weight — Peso

875 gr/m<sup>2</sup>

#### Abrasion — Abrasión

> 60.000 Martindale

#### Lightfastness — Solidez a la luz

7

#### Fire test — Test al fuego

EN 1021-1/2 — BS 5852 part 1

DIN 4102-B2 — US Cal. Tech. Bull. 117

#### Care — Mantenimiento





MISSANA

**Gabriel  
Fabrics**



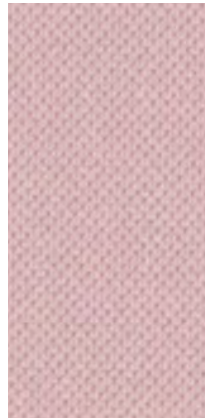
# GABRIEL



EUROPOST W25 62061  
(Group H)



GO COUTURE 64183  
(Group E)



ATLANTIC 64117  
(Group D)



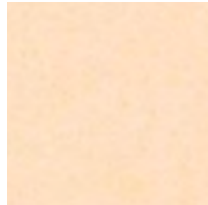
ATLANTIC 64116  
(Group D)



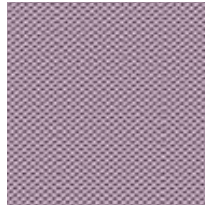
ATLANTIC SCREEN 62038  
(Group D)



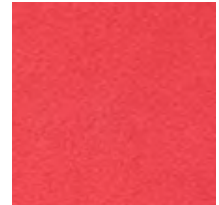
COMFORT+ 62005  
(Upon request)



COMFORT+ 08384  
(Upon request)



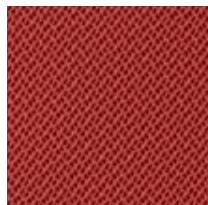
HARLEQUIN 65084  
(Group E)



COMFORT+ 64014  
(Upon request)



FLEX BUBBLES 63035  
**DISCONTINUED**



RHYTHM 63067  
(Group E)



FLEX 65039  
(Group E)



FLEX 65037  
(Group E)



GO COUTURE 64172  
(Group E)



EUROPOST W25 65071  
(Group H)



COMFORT+ 64003  
(Upon request)



OMEGA 64084  
(Group F)



CRISSCROSS 02101  
(Group F)

# MISSANA



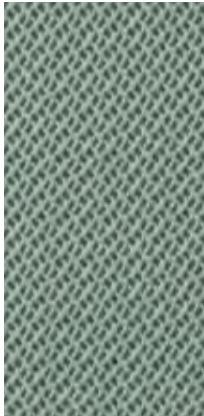
COMFORT+ 66010  
(Upon request)



HARLEQUIN 66058  
(Group E)



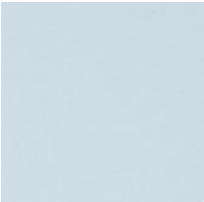
FLEX 66062  
(Group E)



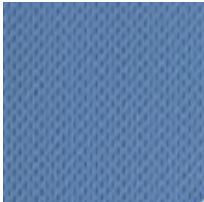
RHYTHM 68121  
(Group E)



COMFORT+ 68003  
(Upon request)



ATLANTIC SCREEN 66094  
(Group D)



FLEX 66061  
(Group E)



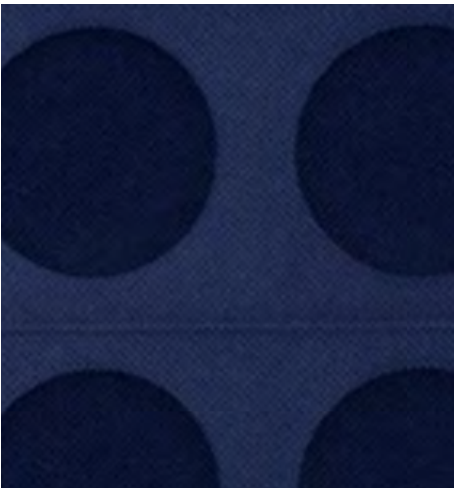
CRISSCROSS 02401  
(Group F)



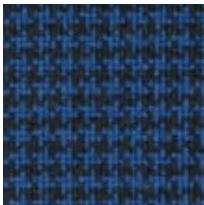
HARLEQUIN 68111  
(Group E)



FLEX 68057  
(Group E)



ATLANTIC BUBBLES 66064  
**DISCONTINUED**



GO COUTURE 66137  
(Group E)



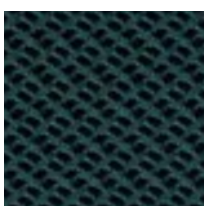
CRISSCROSS 02601  
(Group F)



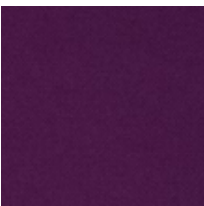
ATLANTIC 67030  
(Group D)



GO COUTURE 67071  
(Group E)



RHYTHM 68124  
(Group E)



ATLANTIC SCREEN 65037  
(Group D)



OMEGA 66148  
(Group F)



FLEX 60011  
(Group E)



CRISSCROSS 01301  
(Group F)



MISSANA

**Group A & B  
Fabrics**

# GROUP A & B



BELLAGIO C/80  
(Group B)



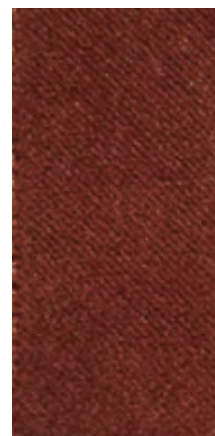
CHANDRA C/69  
(Group B)



BELLAGIO C/105  
(Group B)



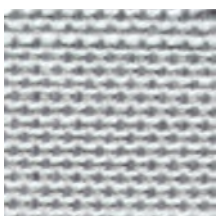
BELLAGIO C/514  
(Group B)



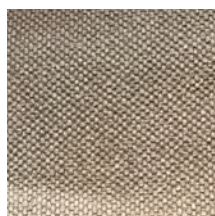
BELLAGIO C/62  
(Group B)



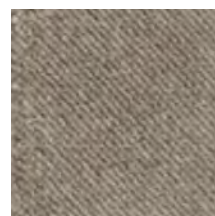
BELLAGIO C/300  
(Group B)



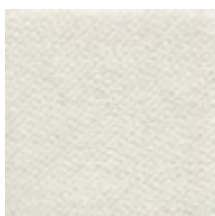
CHANDRA C/72  
(Group B)



PETIT C/21  
(Group A)



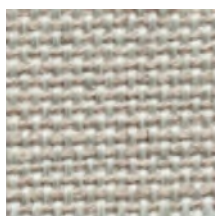
BELLAGIO C/248  
(Group B)



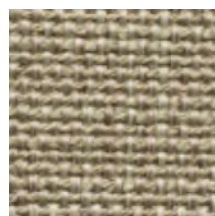
BELLAGIO C/50  
(Group B)



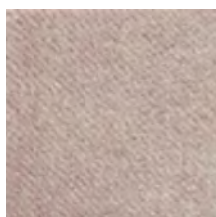
BELLAGIO C/13  
(Group B)



CHANDRA C/54  
(Group B)



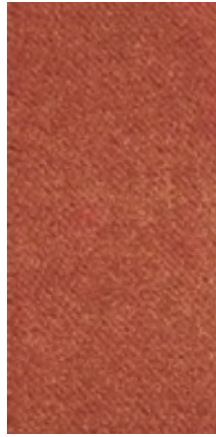
CHANDRA C/10  
(Group B)



BELLAGIO C/503  
(Group B)



CHANDRA C/43  
(Group B)



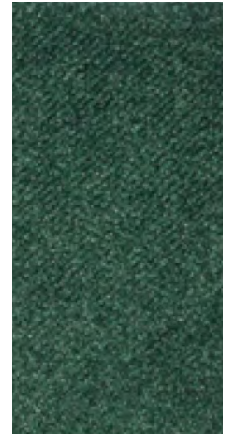
BELLAGIO C/28  
(Group B)



BELLAGIO C/321  
(Group B)



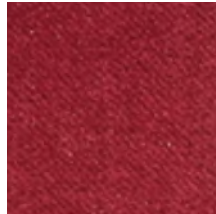
CHANDRA C/8  
(Group B)



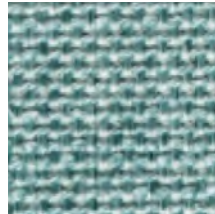
BELLAGIO C/82  
(Group B)



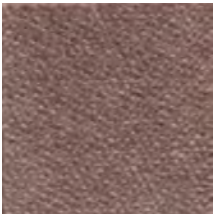
BELLAGIO C/515  
(Group B)



BELLAGIO C/08  
(Group B)



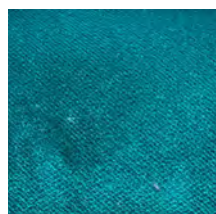
CHANDRA C/80  
(Group B)



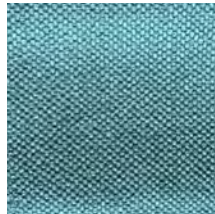
BELLAGIO C/324  
(Group B)



PETIT C/09  
(Group A)



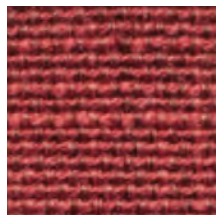
BELLAGIO C/68  
(Group B)



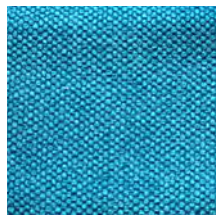
PETIT C/06  
(Group A)



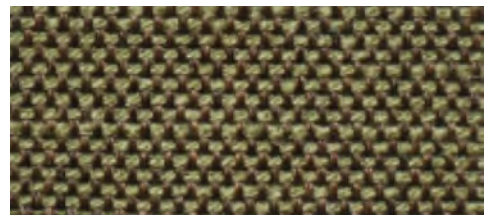
BELLAGIO C/355  
(Group B)



CHANDRA C/33  
(Group B)



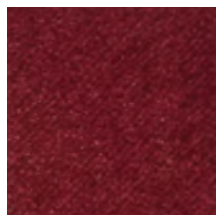
PETIT C/03  
(Group A)



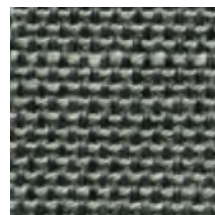
CHANDRA C/79  
(Group B)



CHANDRA C/13  
(Group B)



BELLAGIO C/81  
(Group B)



CHANDRA C/1  
(Group B)

# MISSANA



PETIT C/94  
(Group A)



BELLAGIO C/451  
(Group B)



CHANDRA C/88  
(Group B)



CHANDRA C/93  
(Group B)



CHANDRA C/11  
(Group B)



CHANDRA C/2  
(Group B)



CHANDRA C/61  
(Group B)



CHANDRA C/41  
(Group B)



BELLAGIO C/11  
(Group B)



CHANDRA C/14  
(Group B)



BELLAGIO C/131  
(Group B)



CHANDRA C/18  
(Group B)



BELLAGIO C/14  
(Group B)



BELLAGIO C/59  
(Group B)

## BELLAGIO (Group B)

### Composition — Composición

100% PL

### Width — Ancho

140 cm

### Abrasion — Abrasión

100.000 Martindale

### Lightfastness — Solidez a la luz

5

### Care — Mantenimiento

Warm water & mild soap

Agua tibia y jabón neutro



## CHANDRA (Group B)

### Composition — Composición

47% CO 34% PL 13% VI 5% LI 1%PA

### Width — Ancho

140 cm

### Abrasion — Abrasión

20.000 Martindale

### Lightfastness — Solidez a la luz

5

### Care — Mantenimiento

Dry clean

Lavado en seco



## PETIT (Group A)

### Composition — Composición

100% PL

### Width — Ancho

140 cm

### Abrasion — Abrasión

40.000 Martindale

### Lightfastness — Solidez a la luz

4

### Care — Mantenimiento

Warm water & mild soap

Agua tibia y jabón neutro



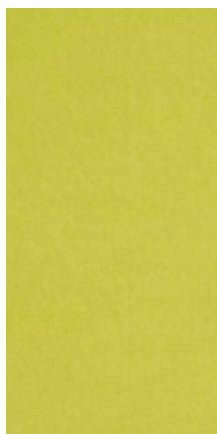




MISSANA

**Kvadrat  
Fabrics**

# KVADRAT



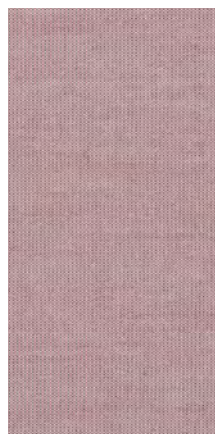
HARALD 3 0432  
(Group F)



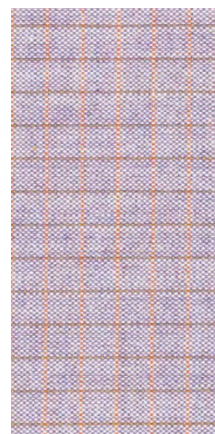
WATERBORN 0443  
(Group H)



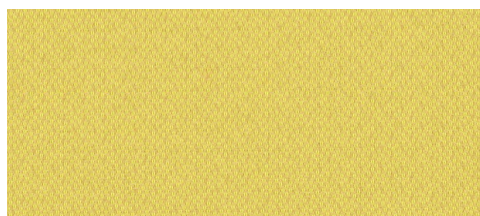
WATERBORN 0603  
(Group H)



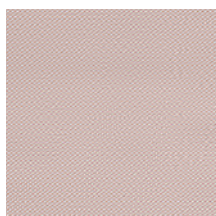
UMAMI 611  
(Group F)  
**DISCONTINUED**



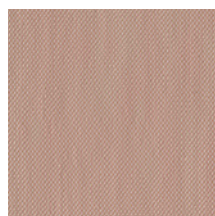
RECHECK 645  
(Group F)



REVIVE 2 423  
(Group E)  
**DISCONTINUED**



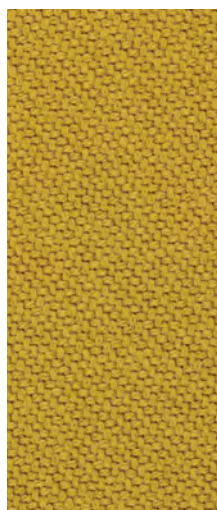
STEELCUT TRIO 3 0426  
(Group F)



STEELCUT TRIO 3 0515  
(Group F)



DIVINA MD 0613  
(Group G)



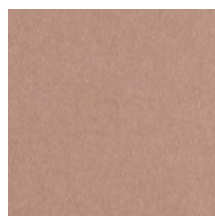
CODA 2 0442  
(Group H)



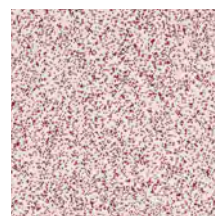
STEELCUT TRIO 3 0446  
(Group F)



CODA 2 0632  
(Group H)



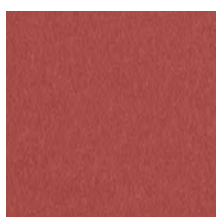
HERO 0511  
(Group G)



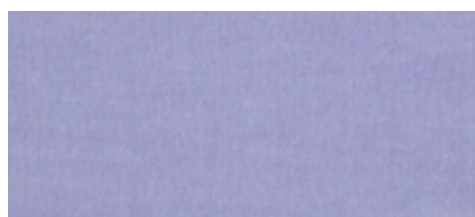
GALAXY 0608  
(Group F)



HARALD 3 533  
(Group F)



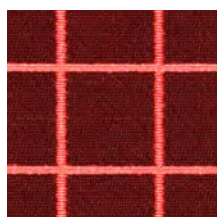
HERO 551  
(Group G)



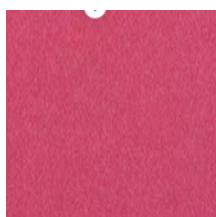
HARALD 3 0632  
(Group F)



DIVINA 3 536  
(Group G)



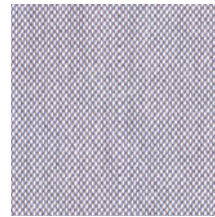
BRIGHT GRID 0004  
(Group H)



DIVINA 3 0626  
(Group G)

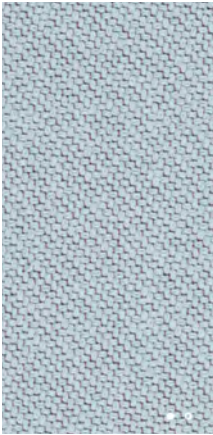


WATERBORN 663  
(Group H)



STEELCUT TRIO 3 806  
(Group F)

# MISSANA



CODA 2 0722  
(Group H)



STEELCUT TRIO 3 746  
(Group F)



HARALD 3 772  
(Group F)



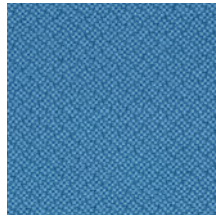
HERO 931  
(Group G)



PINE 981  
(Group E)



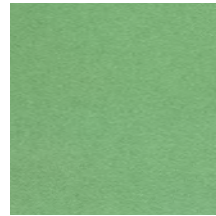
HARALD 3 823  
(Group F)



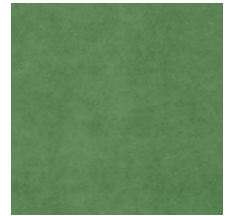
REVIVE 2 753  
(Group E)  
**DISCONTINUED**



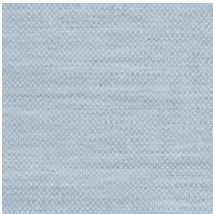
DIVINA 3 791  
(Group G)



DIVINA 3 966  
(Group G)



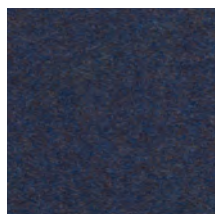
WATERBORN 973  
(Group H)



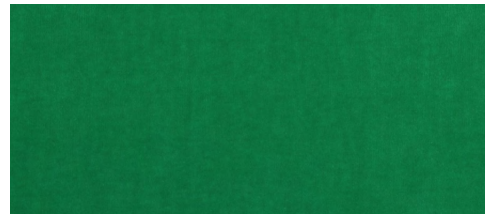
FIORD 721  
(Group F)



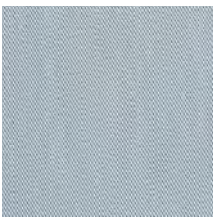
WATERBORN 853  
(Group H)



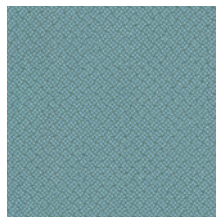
DIVINA MD 753  
(Group G)



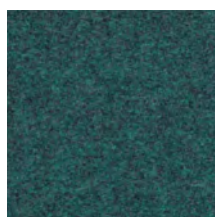
HARALD 3 942  
(Group F)



STEELCUT TRIO 713  
(Group F)



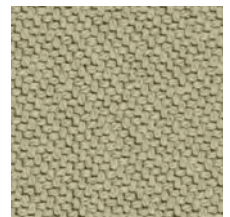
REVIVE 2 833  
(Group E)  
**DISCONTINUED**



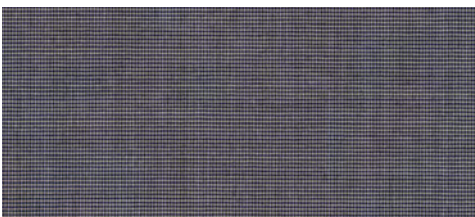
DIVINA MD 843  
(Group G)



HALLINGDAL 65 944  
(Group F)



CODA 2 222  
(Group H)



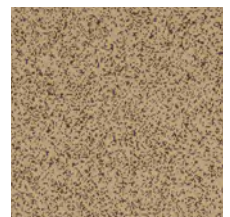
UMAMI 721  
(Group F)  
**DISCONTINUED**



STAR 2 0177  
(Group F)  
**DISCONTINUED**




DIVINA MD 733  
(Group G)



GALAXY 248  
(Group F)


## BRIGHT GRID (Group H)

**Composition — Composición**  
39% cotton 32% polyester 29% nylon  
**Width — Ancho**  
137 cm  
**Weight — Peso**  
490 g/lin.m  
**Abrasion — Abrasión**  
25.000 Martindale  
**Lightfastness — Solidez a la luz**  
4 - 6  
**Fire test — Test al fuego**  
EN 1021-1 — US Cal. Bull. 117-2013  
**Care — Mantenimiento**




## CODA 2 (Group H)

**Composition — Composición**  
90% wool 10% nylon  
**Width — Ancho**  
140 cm  
**Weight — Peso**  
860 g/lin.m  
**Abrasion — Abrasión**  
100.000 Martindale  
**Lightfastness — Solidez a la luz**  
5 - 7  
**Fire test — Test al fuego**  
EN 1021-1/2 — BS 5852 part 1  
DIN 4102 B2 — Önorm B2/Q1  
NF D 60 013 — UNI 9175 11M  
US Cal. Bull. 117-2013 NFPA 260  
IMO FTP Code 2010:Part 8  
**Care — Mantenimiento**



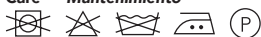
## DIVINA 3 (Group G)

**Composition — Composición**  
100% new wool  
**Width — Ancho**  
150 cm  
**Weight — Peso**  
840 g/lin.m  
**Abrasion — Abrasión**  
45.000 Martindale  
**Lightfastness — Solidez a la luz**  
5 - 7  
**Fire test — Test al fuego**  
AS/NZS 1530.3 — BS 5852 Crib 5  
BS 5852 part 1 — DIN 4102 B2  
EN 1021-1/2 — IMO FTP Code 2010:Part 8  
NF D 60 013 — NFPA 260  
Önorm B1/Q1 — UNI 9175 11M  
SN 198 898 with treatment  
US Cal. Bull. 117-2013  
**Care — Mantenimiento**



## DIVINA MD (Group G)

**Composition — Composición**  
100% new wool  
**Width — Ancho**  
150 cm  
**Weight — Peso**  
820 g/lin.m  
**Abrasion — Abrasión**  
45.000 Martindale  
**Lightfastness — Solidez a la luz**  
5 - 7  
**Fire test — Test al fuego**  
AS/NZS 1530.3 — BS 5852 Crib 5  
BS 5852 part 1 — DIN 4102 B2  
EN 1021-1/2 — NF D 60 013  
IMO FTP Code 2010:Part 8  
NFPA 260 — Önorm B1/Q1  
SN 198 898 5.3 with treatment  
UNI 9175 11M — US Cal. Bull. 117-2013  
**Care — Mantenimiento**



## FIORD (Group F)


**Composition — Composición**  
92% new wool 8% nylon

**Width — Ancho**  
140 cm  
**Weight — Peso**  
500 g/lin.m  
**Abrasion — Abrasión**  
60.000 Martindale  
**Lightfastness — Solidez a la luz**  
5 - 7  
**Fire test — Test al fuego**  
EN 1021-1/2 — BS 5852 part 1  
DIN 4102 B2 — NF D 60 013  
UNI 9175 11M — US Cal. Bull. 117-2013  
IMO FTP Code 2010:Part 8  
**Care — Mantenimiento**




## GALAXY (Group F)

**Composition — Composición**  
100% polyester FR  
**Width — Ancho**  
175 cm  
**Weight — Peso**  
760 g/lin.m  
**Abrasion — Abrasión**  
45.000 Martindale  
**Lightfastness — Solidez a la luz**  
5 - 7  
**Fire test — Test al fuego**  
EN 1021-1/2 — DIN 4102 B1  
Önorm B1/Q1 — SN 198 898 5.2  
NF D 60 013 — NF P 91 507 M1  
UNI 9175 11M — IMO A.652 (16)  
**Care — Mantenimiento**




## HALLINGDAL 65 (Group G)

**Composition — Composición**  
70% new wool 30% viscose  
**Width — Ancho**  
130 cm  
**Weight — Peso**  
795 g/lin.m  
**Abrasion — Abrasión**  
100.000 Martindale  
**Lightfastness — Solidez a la luz**  
5 - 7  
**Fire test — Test al fuego**  
AS/NZS 1530.3 — AS/NZS 3837  
BS 5852 Crib 5 — BS5852 part 1  
DIN 4102 B2 — EN 1021-1/2  
IMO FTP Code 2010: Part 8  
NF D 60 013 — NFPA 260  
Önorm B1/Q1 — UNI 9175 11M  
SN 198 898 5.3 with treatment  
US Cal. Bull. 117 - 2013  
**Care — Mantenimiento**



## HARALD 3 (Group F)


**Composition — Composición**  
100% cotton  
**Width — Ancho**  
140 cm  
**Weight — Peso**  
520 g/lin.m  
**Abrasion — Abrasión**  
100.000 Martindale  
**Lightfastness — Solidez a la luz**  
5 - 6  
**Fire test — Test al fuego**  
AS/NZS 1530.3 — AS/NZS 3837 class 1  
BS 5852 part 1 EN 1021-1  
EN 1021-1 / 2 when flame protected  
**Care — Mantenimiento**



## HERO (Group G)


**Composition — Composición**  
96% new wool 4% nylon  
**Width — Ancho**  
140 cm  
**Weight — Peso**  
580 g/lin.m  
**Abrasion — Abrasión**

45.000 Martindale  
**Lightfastness — Solidez a la luz**  
5 - 6  
**Fire test — Test al fuego**  
AS/NZS 3837 class 2  
BS 5852 Crib 5 with treatment  
BS 5852 part 1 — DIN 4102 B2  
EN 1021-1/2 IMO FTP Code 2010: Part 8  
NF D 60 013 — NFPA 260  
SN 198 898 5.3 with treatment  
UNI 9175 11M — US Cal. Bull. 117-2013  
**Care — Mantenimiento**




## PINE (Group E)

**Composition — Composición**  
80% viscose 20% linen  
**Width — Ancho**  
140 cm  
**Weight — Peso**  
800 g/lin.m  
**Abrasion — Abrasión**  
20.000 Martindale  
**Lightfastness — Solidez a la luz**  
5 - 6  
**Fire test — Test al fuego**  
EN 1021-1/2  
BS 5852 part 1 ignition source 0  
IMO FTP Code 2010 Part 8  
**Care — Mantenimiento**



## RECHECK (Group F)

**Composition — Composición**  
90% new wool 10% nylon  
**Width — Ancho**  
140 cm  
**Weight — Peso**  
420 g/lin.m  
**Abrasion — Abrasión**  
100.000 Martindale  
**Lightfastness — Solidez a la luz**  
5 - 7  
**Fire test — Test al fuego**  
AS/NZS 1530.3 — AS/NZS 3837 class 2  
BS 5852 Crib 5 with treatment  
BS 5852 part 1 — EN 1021-1/2  
IMO FTP Code 2010:Part 8  
NF D 60 013 — NFPA 260  
UNI 9175 11M — US Cal. Bull. 117-2013  
**Care — Mantenimiento**



## REVIVE 2 (Group E)


**Composition — Composición**  
100% recycled polyester FR  
**Width — Ancho**  
140 cm  
**Weight — Peso**  
420 g/lin.m  
**Abrasion — Abrasión**  
60.000 Martindale  
**Lightfastness — Solidez a la luz**  
5 - 7  
**Fire test — Test al fuego**  
BS 5852 Crib 5 with treatment  
EN 1021-1/2 — DIN 4102 B1  
IMO FTP Code 2010: Part 8  
NF D 60 013 with treatment  
Önorm B1/Q1 — UNI 9175 11M  
US Cal. Bull. 117-2013  
**Care — Mantenimiento**



## STAR 2 (Group F)

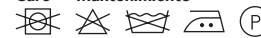
**Composition — Composición**  
100% Trevira CS  
**Width — Ancho**  
140 cm  
**Weight — Peso**  
620 g/lin.m  
**Abrasion — Abrasión**  
80.000 Martindale  
**Lightfastness — Solidez a la luz**

5 - 7  
**Fire test — Test al fuego**  
EN 1021-1/2 — BS 5852, crib 5  
DIN 4102, B1 — Önorm B1/Q1  
NF P 92 507 M1 — UNI 9177, Classe 1  
US Cal. Bull. 117-2013 — FAR 25.853  
IMO FTP Code 2010:Part 8  
**Care — Mantenimiento**



## STEELCUT TRIO 3 (Group F)

**Composition — Composición**  
90% new wool 10% nylon  
**Width — Ancho**  
140 cm  
**Weight — Peso**  
770 g/lin.m  
**Abrasion — Abrasión**  
100.000 Martindale  
**Lightfastness — Solidez a la luz**  
5 - 7  
**Fire test — Test al fuego**  
AS/NZS 1530.3 — AS/NZS 3837 class 2  
BS 5852 Crib 5 with treatment  
BS 5852 part 1 — DIN 4102 B2  
EN 1021-1/2 — IMO FTP Code 2010: Part 8  
NF D 60 013 — NFPA 260  
Önorm B1/Q1 — UNI 9175 11M  
SN 198 898 5.3 with treatment  
US Cal. Bull. 117-2013  
**Care — Mantenimiento**



## UMAMI (Group F)

**Composition — Composición**  
90% wool 10% nylon  
**Width — Ancho**  
140 cm  
**Weight — Peso**  
420 g/lin.m  
**Abrasion — Abrasión**  
80.000 Martindale  
**Lightfastness — Solidez a la luz**  
6 - 7  
**Fire test — Test al fuego**  
EN 1021-1/2 — BS 5852 part 1  
NF D 60 013 — UNI 9175 11M  
US Cal. Bull. 117-2013 — IMO A.652 (16)  
**Care — Mantenimiento**



## WATERBORN (Group H)

**Composition — Composición**  
85% polyester 15% polyurethane  
**Width — Ancho**  
140 cm  
**Weight — Peso**  
600 g/lin.m  
**Abrasion — Abrasión**  
100.000 Martindale  
**Lightfastness — Solidez a la luz**  
4 - 7  
**Fire test — Test al fuego**  
EN 1021-1  
US Cal. Tech. Bull. 117, Sec. E  
**Care — Mantenimiento**





MISSANA

**Various  
Fabrics**

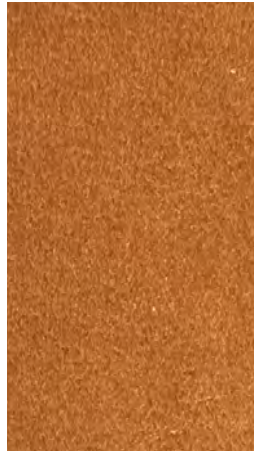
# VARIOUS



DAKOTA SUEDE II  
SUNSHINE K 5018-75  
(Group D)



ROADSTAR  
0550 LIMA  
(Group Leather)



ROADSTAR  
0549 CAMEL  
(Group Leather)



ROADSTAR  
04010 CIPRIA  
(Group Leather)



ASTON 805 CREAM  
(Group D)



LATHI 511  
(Group D)  
**DISCONTINUED**



TRUMAN 60  
(Group D)



HORACE 41  
(Group D)



MOUTON CREME 800-24  
(Group D)



RIBCORD IVORY 101  
(Group C)



172/11 C/2  
(Group D)



MERLIN 315 ANTIQUE GOLD  
(Group E)



MERLIN 952 PLATINUM  
(Group E)



WALLY 40  
(Group C)



CLOUD FR BERRY K5149-47  
(Group D)



SAHARA II  
MAGENTA K5044-74  
(Group D)



ROADSTAR 04060 PURPURA  
(Group Leather)



RIBCORD WINERED 39  
(Group C)



DAKOTA SUEDE II  
MIDNIGHT PURPLE K5018-96  
(Group D)



OSLO 388  
(Group D)  
**DISCONTINUED**



GOTHENBURG 3985  
(Group D)



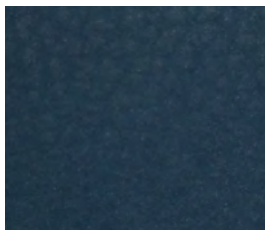
WALLY 21  
(Group C)



MAGMA 105 INDIGO  
(Group F)



DAKOTA SUEDE II  
PETROL K5018-88  
(Group D)



ASTON 100 BLUE  
(Group D)



COURSE 31  
(Group D)  
**DISCONTINUED**



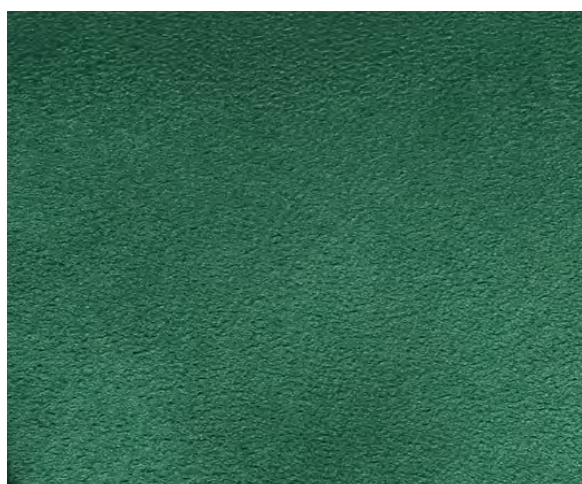
STAVANGER2 676  
(Group D)  
**DISCONTINUED**



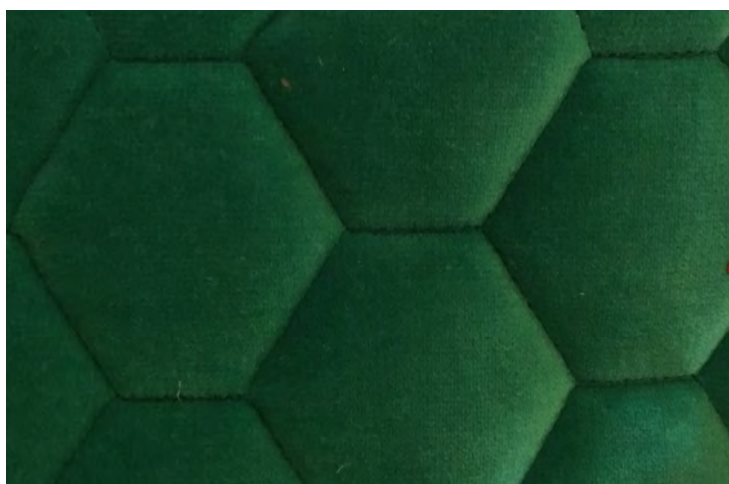
LOWLANDS PLAIN 571  
(Group D)  
**DISCONTINUED**



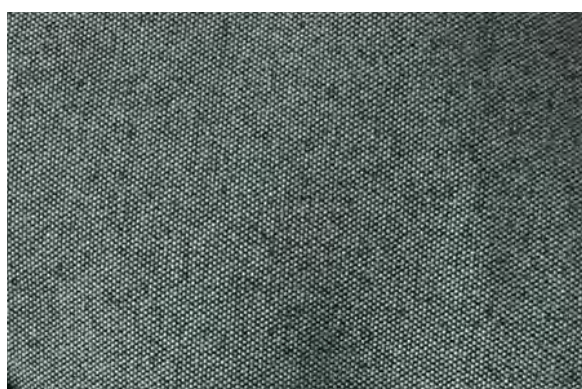
SAHARA II  
TURQUOISE K5044-109  
(Group D)



DAKOTA SUEDE II  
FOREST K5018-82  
(Group D)



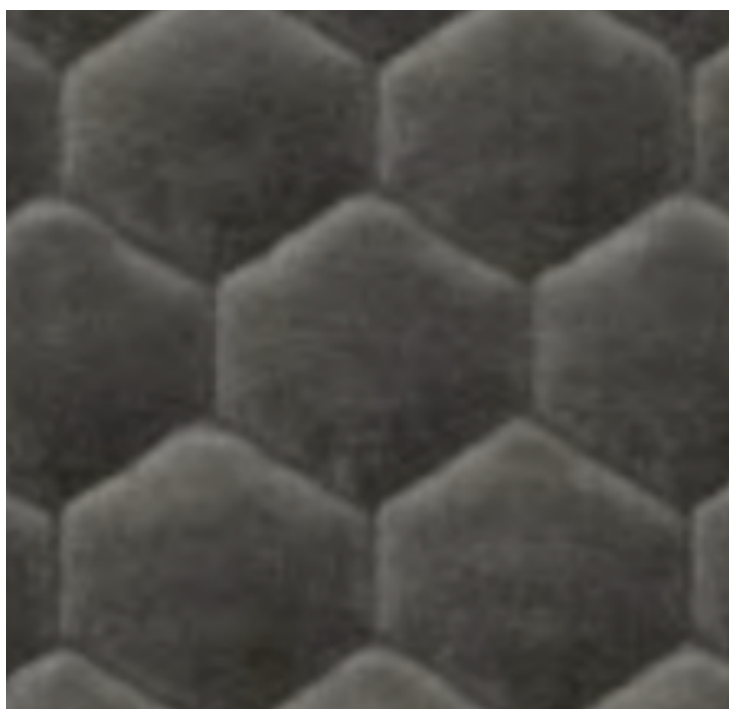
CLOUD FR  
EDEN K5149-33  
(Group G)



BERGEN 678  
(Group D)  
**DISCONTINUED**



WALLY 27  
(Group C)



CLOUD FR  
ANTRACITE K5149-06  
(Group G)



## DAKOTA SUEDE II (Group D)

### Composition — Composición

93% PL 7% PU

### Width — Ancho

142 cm

### Abrasion — Abrasión

30.000 Martindale

### Care — Mantenimiento



## ROADSTAR (Group Leather)

### Composition — Composición

100% Leather

Full cow hide, 1.1/1.2 mm thick,  
wax natural finish, light pull-up effect

### Finishing — Acabado

Full grain leather, soft and wax handle

## ASTON (Group D)

### Composition — Composición

Coating PVC, PU blend,  
Baselcloth cotton, polyester

### Width — Ancho

140 cm

### Weight — Peso

730 g/m<sup>2</sup>

## LATHI (Group D)

### Composition — Composición

100% Trevira CS

### Width — Ancho

140 cm

### Abrasion

50.000

### Lightfastness — Solidez a la luz

5 - 7

### Care — Mantenimiento



## TRUMAN (Group D)

### Composition — Composición

100% CO

### Width — Ancho

300 cm

### Abrasion — Abrasión

27.000 Martindale

### Lightfastness — Solidez a la luz

4 - 5

### Care — Mantenimiento



## HORACE (Group D)

### Composition — Composición

70% WO 20% PES 5% PAN 5% OF

### Width — Ancho

145 cm

### Abrasion — Abrasión

40.000 Martindale

### Lightfastness — Solidez a la luz

4

### Care — Mantenimiento



## MOUTON (Group D)

### Composition — Composición

95% PAN 5% PES

### Width — Ancho

150 cm

### Weight — Peso

580 g/m<sup>2</sup>

### Care — Mantenimiento



## WALLY (Group C)

### Composition — Composición

100% PES

### Width — Ancho

145 cm

### Abrasion — Abrasión

100.000 Martindale

### Lightfastness — Solidez a la luz

4

## RIBCORD (Group C)

### Composition — Composición

88% PES 12% PA

### Width — Ancho

140 cm

### Abrasion — Abrasión

100.000 Martindale

### Lightfastness — Solidez a la luz

4

### Care — Mantenimiento



## 172/11 (Group D)

### Composition — Composición

95% PAN 5% PES

### Width — Ancho

150 cm

### Weight — Peso

580 g/m<sup>2</sup>

### Care — Mantenimiento



## MERLIN (Group E)

### Composition — Composición

100% Polyester with FR coating

### Width — Ancho

138 cm

### Weight — Peso

815 g/m<sup>2</sup>

## CLOUD FR (Group G)

### Composition — Composición

54% CO 40% PL 6% MD

### Width — Ancho

133 cm

### Abrasion — Abrasión

100.000 Martindale

### Care — Mantenimiento



## SAHARA II (Group D)

### Composition — Composición

100% CO

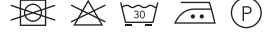
### Width — Ancho

141 cm

### Abrasion — Abrasión

65.000 Martindale

### Care — Mantenimiento



## OSLO (Group D)

### Composition — Composición

100% Trevira CS

### Width — Ancho

140 cm

Weight

350 g/m<sup>2</sup>

### Abrasion — Abrasión

68.500 Martindale

## GOTHENBURG (Group D)

### Composition — Composición

100% LI

### Width — Ancho

137 cm

### Abrasion — Abrasión

25.000 Martindale

### Lightfastness — Solidez a la luz

5

### Care — Mantenimiento



## MAGMA (Group F)

### Composition — Composición

Trevira CS, FR Polyester Velvet

### Width — Ancho

140 cm

### Weight — Peso

400 g/m<sup>2</sup>

## COURSE (Group D)

### Composition — Composición

80% CV 11% CO 9% PES

### Width — Ancho

148 cm

Abrasion

100.000

Lightfastness

5

## STAVANGER 2 (Group D)

### Composition — Composición

100% Trevira CS

### Width — Ancho

140 cm

Abrasion

80.000

Lightfastness

5 - 6

### Care — Mantenimiento



## LOWLANDS (Group D)

### Composition — Composición

70% New wool 30% Polyamide

### Width — Ancho

140 cm

### Weight — Peso

415 gr/m<sup>2</sup>

Abrasion

180.000

Martindale

Lightfastness

5 - 6

### Care — Mantenimiento



## BERGEN (Group D)

### Composition — Composición

100% Trevira CS

### Width — Ancho

140 cm

Abrasion

45.000

Martindale

Lightfastness

5

### Care — Mantenimiento



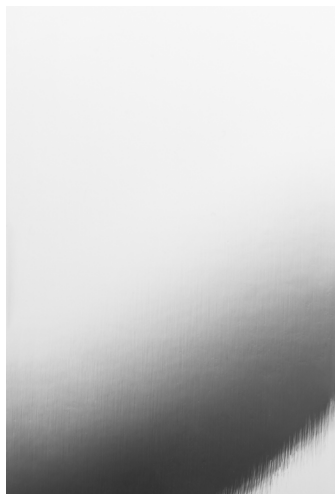
---

# METAL FINISHINGS

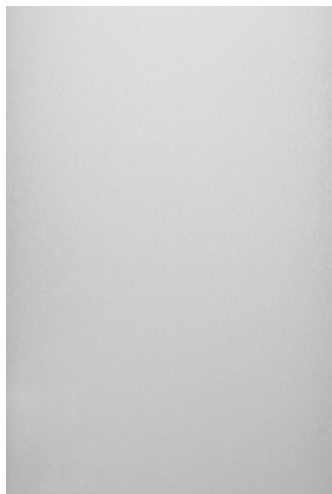
---

MISSANA

**CHROME  
GLOSS**



**CHROME  
MATT**



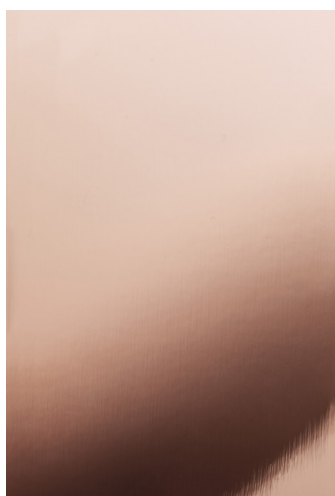
**GOLD  
GLOSS**



**GOLD  
MATT**



**COPPER  
GLOSS**



**COPPER  
MATT**



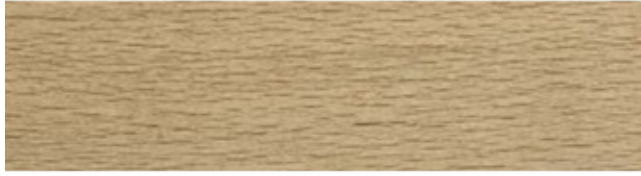


# WOOD COLOURS

MISSANA



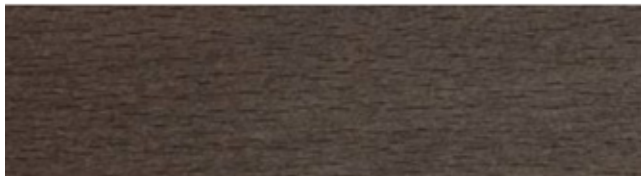
COLOUR 01



COLOUR 02



COLOUR 03



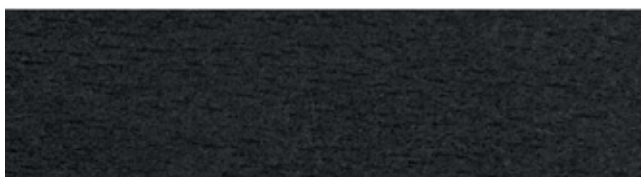
COLOUR 04



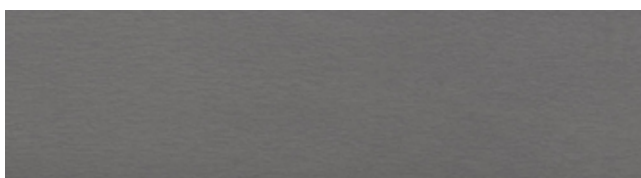
COLOUR 05



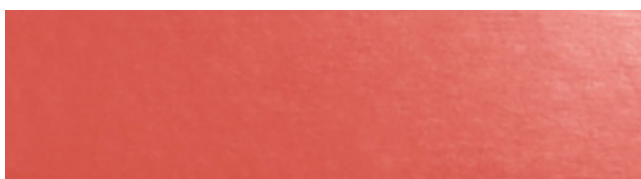
COLOUR 06



COLOUR 07



COLOUR 08



COLOUR 09

AVAILABLE IN ANY  
RAL COLOUR

IMPORTANT NOTE: The pictures which show a wooden finish on our website and catalogue are digital reproductions, the color may vary depending on the screen resolution. We recommend confirming the finish with physical samples, taking into account that wood is a natural material and color may differ slightly from one to another.