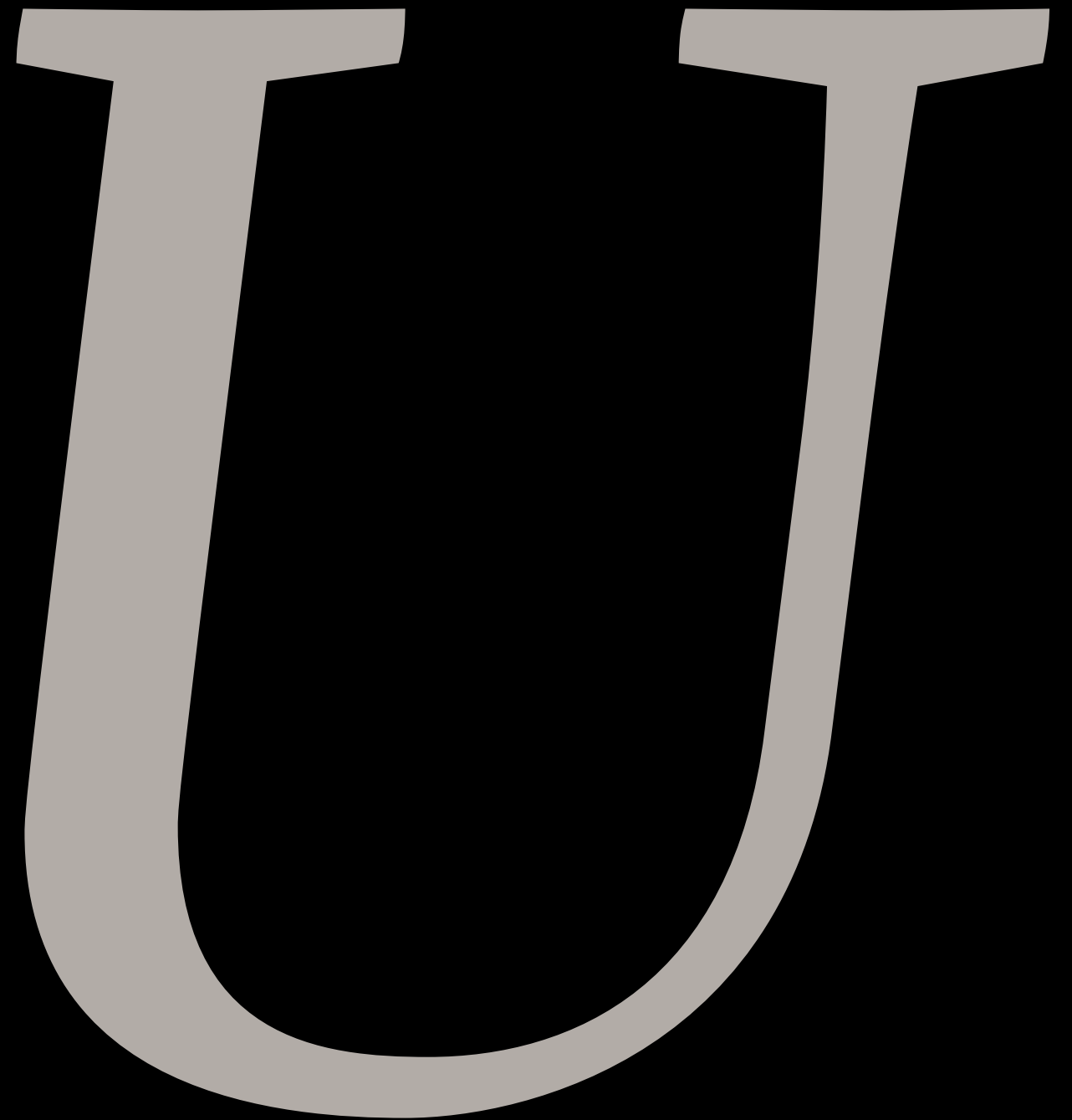

Upholstery



MENU Upholstery Program

The MENU Upholstery Program is an overview of the textile and leathers available for MENU upholstered furniture. All textile and leather options are available in all colors. You'll find over 100 fabric and leather options, with the most popular configurations available with expedited delivery in our Quick Ship program.

Custom upholstery orders from our MENU Upholstery Program (SPEC) are ready to ship with standard delivery lead times. Our Fixed Combinations listed in this Brand Book are suggested upholsteries selected by our design team, and deliver with standard lead times.

We are happy to upholster furniture using customer's own materials (COM) with extended delivery lead times, upon fabric approval.

Please note that the color references in this Brand Book are only intended as a guide. For further information please see manufacturer websites, or contact your local MENU Sales Representative for samples or further information.

kvadrat.dk
gabriel.dk
jab.de
sorensenleather.com
nevotex.com
astrid.se



Upholstery Selection & Furniture

	AFTERROOM	AFTERROOM PLUS	EAVE	GODOT	HARBOUR	OFFSET	SEPTEMBRE	SYNNES	TAILOR	CO CHAIR	TEAROOM
TEXTILE											
PRICE CATEGORY 1											
Remix 2, Kvadrat	•	•	•	•	•	•	•	•	•	•	•
Maple, Kvadrat	•	•	•			•	•	•	•	•	•
Gaja C2c Gabriel	•	•	•	•	•	•	•	•	•	•	•
Hot Madison, JAB	•	•	•	•	•	•	•	•	•	•	•
City Velvet, JAB	•	•	•		•	•	•	•		•	•
Pastel Poetry	•	•	•	•	•	•	•	•	•	•	•
PRICE CATEGORY 2											
Fiord Kvadrat	•	•	•	•	•	•	•	•	•	•	•
Canvas Kvadrat	•	•	•	•	•	•	•	•	•	•	•
Colline Kvadrat	•	•	•	•	•	•	•	•	•	•	•
Hallingdal 65, Kvadrat	•	•	•	•	•	•	•	•	•	•	•
Savanna, Kvadrat	•	•	•		•	•	•	•	•	•	•
Steelcut Trio 2, Kvadrat	•	•	•	•	•	•	•	•	•	•	•
Steelcut 2, Kvadrat	•	•	•	•	•	•	•	•	•	•	•
Icon, Nevotex	•	•	•		•	•		•	•	•	•
Ritz, Nevotex (*not suitable for UK)	•	•	•			•	•	•		•	
PRICE CATEGORY 3											
Vintage, Astrid	•	•	•	•	•	•	•	•	•	•	•
LEATHER											
PRICE CATEGORY 1											
Ultra, Sørensen Leather	•	•			•		•	•	•	•	
Dakar, Nevotex	•	•			•		•	•	•	•	
PRICE CATEGORY 2											
Shade, Sørensen Leather	•	•			•		•	•	•	•	
Dunes, Sørensen Leather	•	•			•		•	•	•	•	
Nuance, Sørensen Leather	•	•			•				•	•	
PRICE CATEGORY 3											
Royal Nubuck, Sørensen Leather	•	•			•		•	•	•	•	
PRICE CATEGORY 4											
Elegance, Sørensen Leather	•	•					•	•		•	

Category I

TEXTILE



Maple, Kvadrat
Available in all colors
Composition: 81% Viscose,
15% Linen, 4% Polyester
Durability: 30.000 Martindale



Remix 2, Kvadrat
Available in all colors
Composition: 90% New wool
(worsted), 10% Nylon
Durability: 100.000 Martindale



City Velvet, JAB
Available in all colors
Composition: 100% polyester
Durability: 50.000 Martindale



Hot Madison, JAB
Available in all colors
Composition: 63% cotton,
37% linen
Durability: 55.000 Martindale

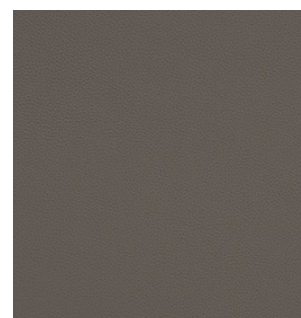


Gaja C2C, Gabriel
Available in all colors
Composition: 100% wools
Durability: 50.000 Martindale



Pastel Poetry, JAB
Available in all colors
Composition: 66 % polyacrylic,
34 % polyester
Durability: 30.000 Martindale

LEATHER



Ultra, Sorensen Leather
Available in all colors
Type: Protected leather
Thickness: 0.9—1.1 mm
Surface: Very strong and durable
with a uniform, matt surface print



Dakar, Nevotex
Available in all colors
Type: Aniline leather
Thickness: 1.0—1.2 mm
Surface: Supple and flexible, and
over time, will develop its own
character and colour distribution

Category 2

TEXTILE



Hallingdal 65, Kvadrat
Available in all colors
Composition: 70% New wool, 30% Viscose
Durability: 100.000 Martindale



Savanna, Kvadrat
Available in all colors
Composition: 34% Polyester, 31% New wool, 26% Acrylic, 4% Cotton, 3% Nylon, 2% Linen
Durability: 45.000 Martindale



Ritz, Nevotex
Available in all colors
Composition: 83% Cotton, 9% Modal, 8% Polyester
Durability: 100.000 Martindale



Colline, Kvadrat
Available in all colors
Composition: 75% New wool (worsted), 17% Acrylic, 8% Nylon
Durability: 100.000 Martindale



Canvas, Kvadrat
Available in all colors
Composition: 90% New wool (worsted), 10% Nylon
Durability: 100.000 Martindale



Fiord, Kvadrat
Available in all colors
Composition: 92% New wool (worsted), 8% Nylon
Durability: 60.000 Martindale



Steelcut 2, Kvadrat
Available in all colors
Composition: 90% New wool (worsted), 10% Nylon
Durability: 80.000 Martindale



Steelcut Trio 3, Kvadrat
Available in all colors
Composition: 90% New wool (worsted), 10% Nylon
Durability: 100.000 Martindale



Icon, Nevotex
Available in all colors
Composition: 100% Polyester
Durability: 100.000 Martindale

kvadrat.dk
gabriel.dk
jab.de
sorensenleather.com
nevotex.com
astrid.se

LEATHER



Dunes, Sørensen Leather
Available in all colors
Type: Aniline leather
Thickness: 1.1—1.3 mm
Surface: An elegant, matt surface with a somewhat velvety look and feel



Shade, Sørensen Leather
Available in all colors
Type: Protected aniline leather
Thickness: 1.1—1.3 mm
Surface: Natural markings are part of the appeal



Nuance, Sørensen Leather
Available in all colors
Type: Protected aniline leather
Thickness: 1.2—1.4 mm
Surface: Visible natural markings and two-tone texture

Category 3

Category 4

Natural Markings On Leather

TEXTILE



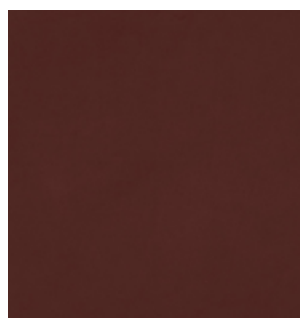
Vintage, Astrid
Available in all colors
Composition: 90% Linen,
10% Polyamid
Durability: 45.000 Martindale

LEATHER



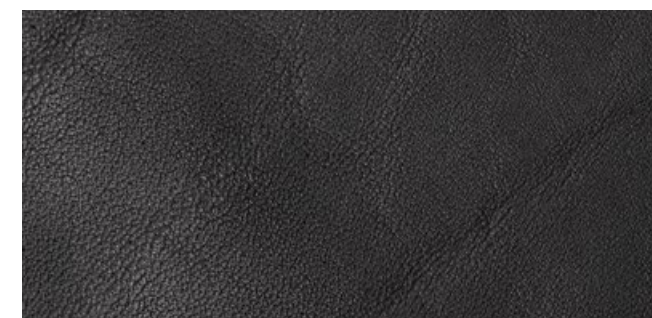
Royal Nubuck, Sorensen Leather
Available in all colors
Type: Aniline leather
Thickness: 1.2—1.6 mm
Surface: Smooth, velvety
grain structure

LEATHER

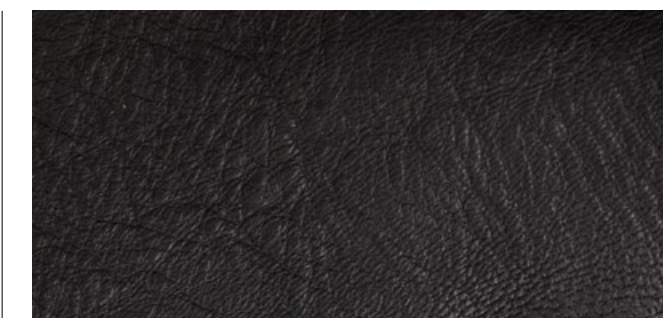


Elegance, Sorensen Leather
Available in all colors
Type: Aniline leather
Thickness: 1.2—1.4 mm
Surface: Natural surface and
subtle markings

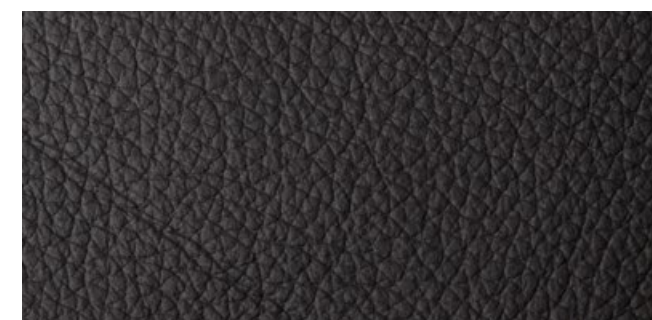
kvadrat.dk
gabriel.dk
jab.de
sorensenleather.com
nevotex.com
astrid.se



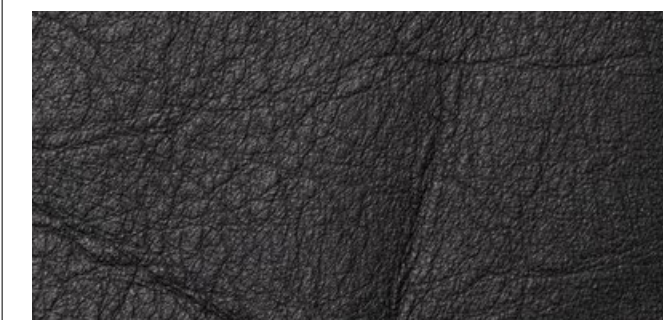
FAT WRINKLES



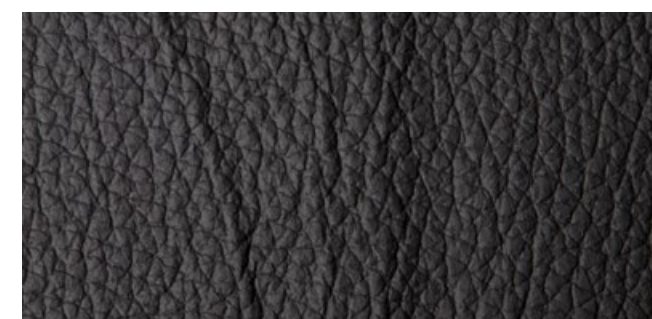
SCAR / INSECT BITES



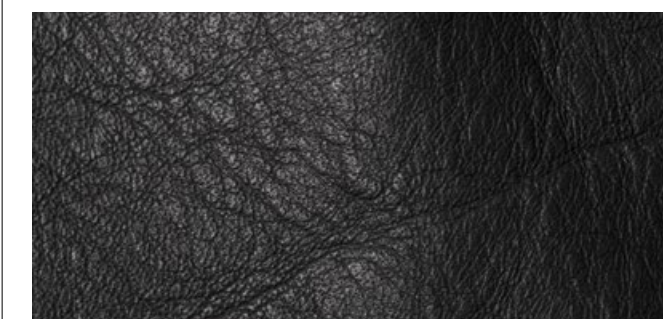
FOLDS



BUTCHING SCAR



HEALED SCARS



FAT WRINKLES

Individual and unique markings may appear on the leather and should not be considered defects.

