

Arda  
By Front

kvadrat febrik





## Arda

70% new wool, 21% polyester, 9% nylon  
142 cm  
12 colours

## Arda

*Arda* is a knitted upholstery textile which recreates complex natural forms, structures, surfaces, and colours found deep in the wild. It is part of a design project entitled Design by Nature led by Sofia Lagerkvist and Anna Lindgren from the Swedish design studio Front.

The double-knitted textile replicates textures and tones discovered, photographed, and 3D-scanned by Front. Its 12 colours express the experience of different natural environments found in Swedish forests, snowscapes, and lakesides.

Design by Nature was inspired by studies that show how spending time in nature has positive effects on wellbeing, memory, and creativity. Sofia Lagerkvist and Anna Lindgren: *'This idea made us wonder whether it could be possible to bring fragments of wilderness, of the natural world, directly into domestic settings.'*

The tapestry-like expression of *Arda* changes to reflect the environment where it is situated. In this way, like the fluid experience of nature, the textile reveals surprising nuances and characteristics as its surroundings, or the conditions change.

*Arda* is crafted to minimise impact on the natural environments that it mimics. It is primarily constructed from natural woollen yarn – a renewable resource – using an innovative manufacturing process. A technique that, compared to conventional methods, reduces water consumption by between 80 to 95 per cent.

Aesthetically, *Arda* enables you to bring the organicity of wilderness into your home, it also delivers strong functional performance. Like all knitted textiles, it offers outstanding tactility, comfort and is ideal for organic forms.

*Arda* is suitable for upholstery and vertical applications. Consequently, it is ideal for contract as well as residential usage.

### About Front

Front is a Swedish design group led by Sofia Lagerkvist and Anna Lindgren. Their works are based on explorations, and experiments. Their work often communicates a story to the observer about the design process, material, or conventions within the field of design.

Work from Front forms part of the permanent collections of many prestigious institutions such as the MoMA in New York, the Victoria & Albert Museum in London, the London Design Museum, Vitra Design Museum Germany, M+ Hong Kong, Röhsska Museet, and the National Museum in Stockholm. They also collaborate with leading furniture brands, including Vitra, IKEA, Moroso, Moooi and Kartell.

### **Kvadrat Febrik**

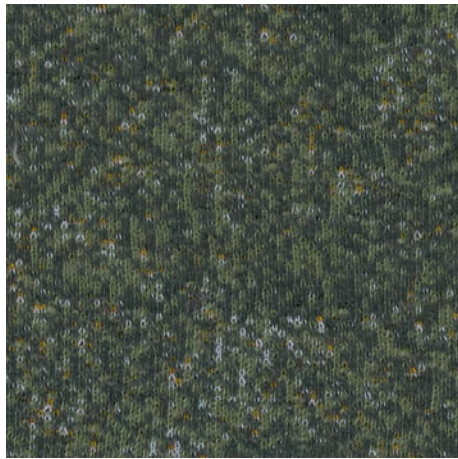
Kvadrat Febrik's knitted textiles push the boundaries of technology and creativity, and embody a visionary new approach to the world of upholstery. Our versatile collection, innovative approach and collaborative attitude inspire designers and architects to consider textiles as a starting point for interior concepts and industrial designs. Kvadrat Febrik create pioneering designs characterised by aesthetic and functional excellence and bring ground breaking proposition to the field of textile innovation. In doing so, we collaborate with leading designers, architects and artists including: Bertjan Pot, Anderssen & Voll, Raw Color and Marc Thorpe.

Kvadrat Febrik is partly owned by Kvadrat, a leader in design innovation. A leader in design innovation, Kvadrat produces high-performing, design textiles, rugs, acoustics and window covering solutions for both commercial and residential interiors.

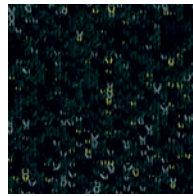
For further information, please contact  
[press@kvadrat.org](mailto:press@kvadrat.org)

[kvadrat.dk](http://kvadrat.dk)

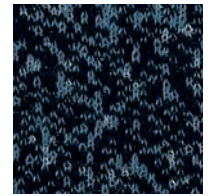
Arda



961



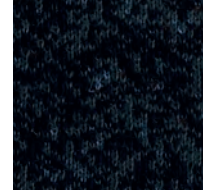
991



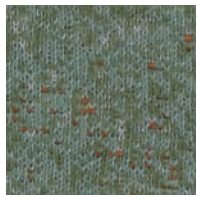
771



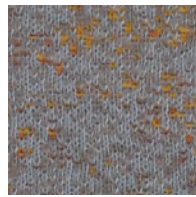
161



791



931



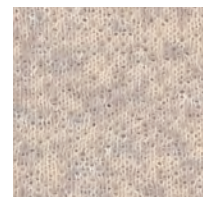
321



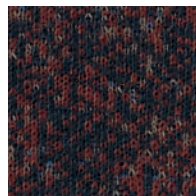
131



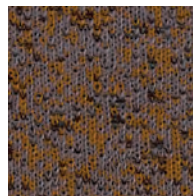
211



201



671



351

## Arda

Designed by Front

### DK

**Anvendelse** Kontorer, hoteller, institutioner, private indretninger. Stor slidstyrke.  
**Beskrivelse** 70% ny uld, kamgarn, 21% polyester, 9% nylon. Bredde ca. 142 cm. Vægt ca. 800 g/lbm. Materialefarvet. I lyse farver kan fremmede fibre forekomme. Nuanceforskel kan forekomme.  
**Ægkant** ↔  
**Slidstyrke:** Ca. 50.000 slidbevægelser efter Martindale metoden EN ISO 12947. **Lysægthed** (ISO) 5-7. **Pilling** (EN ISO) 5. **Gnidægthed** (ISO) tør 3, våd 3-4. **Lydabsorption** (EN ISO 354) 0.40/Class D (fladt). **Airflow** 165 Pa s/m. **Flammesikring:** AS/NZS 3837 Class 2. ASTM E84 Class A hæftet. BS 5852 Crib 5 med flammesikring. BS 5852 part 1. DIN 4102 B2. EN 1021-1/2. IMO FTP Code 2010:Part 8. UNI 9175 11M. US Cal. Bull. 117-2013. (Kopi af testrapport kan rekvireres).  
**Vedligeholdelse** Se ISO symboler. Desinfektion, se kvadrat.dk.

### UK/US

**Application** Offices, hotels, institutions, domestic use. Great durability.  
**Description** 70% new wool, worsted, 21% polyester, 9% nylon. Width app. 56 inches (142 cm). Weight app. 800 g/lin.m, 28.0 oz/ly. Material dyed. Foreign fibres may occur in light colours. Colour differences may occur.  
**Selvedge/Direction** ↔  
**Abrasion:** App. 50,000 rubs acc. to the Martindale method EN ISO 12947\*.  
**Lightfastness** (ISO) 5-7. **Pilling** (EN ISO) 5. **Fastness to rubbing** (ISO) dry 3, wet 3-4. **Sound absorption** (EN ISO 354) 0.40/Class D (flat). **Airflow** 165 Pa s/m. **Flame resistance:** AS/NZS 3837 Class 2. ASTM E84 Class A unadhered. BS 5852 Crib 5 with treatment. BS 5852 part 1. DIN 4102 B2. EN 1021-1/2. IMO FTP Code 2010:Part 8. UNI 9175 11M. US Cal. Bull. 117-2013. (Copy of test report available).  
**Care** Please see the ISO symbols. Disinfection, see kvadrat.dk.

### DE

**Anwendungsbereich** Büros, Hotels, Objektbereich, privater Wohnbereich. Hohe Strapazierfähigkeit.  
**Beschreibung** 70% Schurwolle, Kammgarn, 21% Polyester, 9% Nylon. Breite ca. 142 cm. Gewicht ca. 800 g/m. Materialgefärbt. In hellen Farben können Fremdfasern vorkommen. Farbunterschiede können vorkommen.  
**Webkante** ↔  
**Scheuerfestigkeit:** Ca. 50.000 Scheuerhübe nach der Martindale Methode EN ISO 12947. **Lichtechtheit** (ISO) 5-7. **Pilling** (EN ISO) 5. **Reibechtheit** (ISO) trocken 3, nass 3-4. **Schallabsorption** (EN ISO 354) 0.40/Class D (glatt). **Airflow** 165 Pa s/m. **Flammschutz:** AS/NZS 3837 Class 2. ASTM E84 Class A unverklebt. BS 5852 Crib 5 mit Ausrüstung. BS 5852 part 1. DIN 4102 B2. EN 1021-1/2. IMO FTP Code 2010:Part 8. UNI 9175 11M. US Cal. Bull. 117-2013. (Testbericht verfügbar).  
**Pflege** Siehe ISO Pflegesymbole. Desinfektion, siehe kvadrat.dk.

### NL

**Toepassing** Kantoren, hotels, instellingen, de privéfeer. Uitstekende slijtvastheid.  
**Omschrijving** 70% scheerwol, kamgaren, 21% polyester, 9% nylon. Breedte ca. 142 cm. Gewicht ca. 800 gr/str. m. Gareengeverfd. Afwijkende vezels kunnen voorkomen in lichte kleuren. Kleurverschillen kunnen optreden.  
**Zelfkant** ↔  
**Slijtvastheid:** Ca. 50.000 toeren Martindale EN ISO 12947. **Lichtechtheid** (ISO) 5-7. **Pilling** (EN ISO) 5. **Wrijftechtheid** (ISO) droge 3, natte 3-4. **Geluidsabsorptie** (EN ISO 354) 0.40/Class D (vlak). **Airflow** 165 Pa s/m. **Brandwerendheid:** AS/NZS 3837 Class 2. ASTM E84 Class A ongelijmd. BS 5852 Crib 5 met behandeling. BS 5852 part 1. DIN 4102 B2. EN 1021-1/2. IMO FTP Code 2010:Part 8. UNI 9175 11M. US Cal. Bull. 117-2013. (Op aanvraag sturen wij u graag een kopie van het testrapport toe).  
**Onderhoud** Zie de ISO symbolen. Desinfectie, kvadrat.dk.

### FR

**Domaine d'utilisation** Tissu d'ameublement pour aménagement privé et public. Grande résistance.  
**Description** 70% laine vierge, peigné, 21% polyester, 9% nylon. Largeur env. 142 cm. Poids env. 800 g/m lg. Teinture en bourre. Dans les couleurs claires, présence de fibres étrangères. Ecart des coloris possibles.  
**Lisière** ↔  
**Résistance à l'abrasion:** Env. 50.000 révolutions selon le procédé Martindale EN ISO 12947. **Résistance à la lumière** (ISO) 5-7. **Boulochage** (EN ISO) 5. **Résistance au frottement** (ISO) sec 3, mouillé 3-4. **Absorption acoustique** (EN ISO 354) 0.40/Class D (à plat). **Airflow** 165 Pa s/m. **Normes au feu:** AS/NZS 3837 Class 2. ASTM E84 Class A non collé. BS 5852 Crib 5 avec traitement. BS 5852 part 1. DIN 4102 B2. EN 1021-1/2. IMO FTP Code 2010:Part 8. UNI 9175 11M. US Cal. Bull. 117-2013. (La copie du compte rendu des tests est disponible sur demande).  
**Entretien** Voir les symboles ISO. Désinfection, voir kvadrat.dk.

### IT

**Destinazione d'uso** Rivestimento per imbottiti casa e contract. Alta resistenza all'abrasione.  
**Caratteristiche** 70% lana vergine, pettinata, 21% poliestere, 9% nylon. Altezza circa 142 cm. Peso circa 800 gr/mtl. Tinto in fiocco. Nei colori chiari possono essere presenti fibre di tonalità scure. Possibili differenze per colore.  
**Cimosa** ↔  
**Abrasion:** Circa 50.000 cicli/metodo Martindale EN ISO 12947. **Resistenza alla luce** (ISO) 5-7. **Pilling** (EN ISO) 5. **Resistenza allo sfregamento** (ISO) condizione a secco 3, condizione umido 3-4. **Absorbimento acustico** (EN ISO 354) 0.40/Class D (a pannello) (tesa). **Airflow** 165 Pa s/m. **Ignifugazione:** AS/NZS 3837 Class 2. ASTM E84 Class A non incollato. BS 5852 Crib 5 se trattato ignifugo. BS 5852 part 1. DIN 4102 B2. EN 1021-1/2. IMO FTP Code 2010:Part 8. UNI 9175 11M. US Cal. Bull. 117-2013. (Disponibile copia del test).  
**Manutenzione** Per favore seguire simboli ISO. Per disinfettare, vedi il sito kvadrat.dk.

### ES

**Aplicación** Oficinas, hoteles, instituciones, uso doméstico. Gran resistencia al desgaste.  
**Descripción** 70% lana virgen, peinada, 21% poliéster, 9% nilón. Anchura aprox. 142 cm. Peso aprox. 800 gr/ml. Teñido en material. En los colores claros puede haber fibras de otro color. Posibles variaciones de color.  
**Filo** ↔  
**Resistencia al desgaste:** Aprox. 50.000 ciclos según el método Martindale EN ISO 12947. **Resistencia a la luz** (ISO) 5-7. **Relleno** (EN ISO) 5. **Solidez al frotamiento** (ISO) seco 3, mojado 3-4. **Absorción acústica** (EN ISO 354) 0.40/Class D (estor). **Airflow** 165 Pa s/m. **Resistencia al fuego:** AS/NZS 3837 Class 2. ASTM E84 Class A sin pegar. BS 5852 Crib 5 con tratamiento. BS 5852 part 1. DIN 4102 B2. EN 1021-1/2. IMO FTP Code 2010:Part 8. UNI 9175 11M. US Cal. Bull. 117-2013. (Copia del informe de ensayos disponible).  
**Mantenimiento** Consulte los símbolos ISO. Desinfección, visita kvadrat.dk.

### JP

**用途** オフィス、ホテル、各種施設、住宅インテリア。耐耗性大。  
**詳細** ニューウール、ウーステッド 70%、ポリエステル 21%、ナイロン 9%。幅：142 cm。重量：1m あたり約 800 g。原材料染色。明色の場合異質繊維が混ざる事あり。色に多少の違いが生じる場合があります。  
**セルピッチ** ↔  
**テスト:**  
**磨耗:** マーチンデール法により摩擦運動約 50,000 回。EN ISO 12947. **耐光性:** (ISO) 5-7. **ピリング** (EN ISO) 5. **摩擦保証:** (ISO) 乾燥状態 3、濡れた状態 3-4. **吸音率** (EN ISO 354) 0.40/Class D (パネル状). **気流** 165 Pa s/m. **耐炎性:** AS/NZS 3837 Class 2. ASTM E84 Class A unadhered. 特殊耐炎処理を行うことにより、BS 5852 Crib 5 に到達可能。BS 5852 part 1. DIN 4102 B2. EN 1021-1/2. IMO FTP Code 2010:Part 8. UNI 9175 11M. US Cal. Bull. 117-2013. (認定書類のご用意あり.)  
**お手入れ**  
ISO シンボル参照。消毒について?kvadrat.dkまで参照ください。

### CN

**适用范围** 办公室、宾馆酒店、公共设施、居家使用。耐耗性大。  
**成分** 70%新羊毛(精纺)、21%涤纶、9%尼龙。幅宽约56英寸(142cm)。重量约800克/延米。原材料染色面料。浅色面料可能会有外来纤维。颜色可能稍有色差。  
**图纹方向** ↔  
**马丁代尔法**约50,000转。EN ISO 12947. **光照色牢度** (ISO) 5-7. **起毛起球** (EN ISO) 5. **磨擦色牢度** (ISO) 干燥3, 湿3-4. **吸声系数** (EN ISO 354) 0.40/Class D (隔断帘). **气流阻力** 165 Pa s/m. **阻燃性:** AS/NZS 3837 Class 2. ASTM E84 Class A unadhered. 特别耐火处理时BS 5852 Crib 5 可以满足。BS 5852 part 1, DIN 4102 B2. EN 1021-1/2. IMO FTP Code 2010:Part 8. UNI 9175 11M. US Cal. Bull. 117-2013. (可提供测试报告副本).  
**维护** 请参照ISO标志。消毒请参阅kvadrat.dk.



Quality and environmental system accreditation according to ISO 9001 and ISO 14001.

\* ACT® Registered Certification Marks

\* Abrasion test results exceeding ACT performance guidelines are not an indicator of product lifespan. Multiple factors affect fabric durability and appearance retention.

Contact and further information [kvadrat.dk](http://kvadrat.dk)

5 year warranty



US contact info: 1-800-620-9309