

INCIPIT

*We are Incipit Lab  
from Milan, Italy*



*We develop products  
with elegant finishes,  
designed with a young  
and fresh approach*



*We take inspiration from  
the Italian tradition  
and the Mediterranean  
atmospheres*





## *Contemporary Mediterranean*

Incipit Lab is a Milan-based design company, started in 2013 by two founders, Marta Bernstein and Roberto Hoz, with the aim of encouraging and supporting young and promising creative talents, turning their ideas into high quality objects and accessories, that combine the liveliness of contemporary experimentation with the tradition of the Italian know-how.

Every Incipit item is made strictly by Italian artisans and manufacturers using the materials typical of the Italian tradition: metal, blown glass, marble, wood, cork, terracotta and ceramic.



Incipit aims to create a wide-ranging choice of products taking inspiration from the **Italian tradition and the Mediterranean atmospheres**. Our suppliers are chosen among the best the Italian craftsmanship has to offer: they are not just executors, they actively collaborate with their knowledge of the production processes to find the best possible solutions.

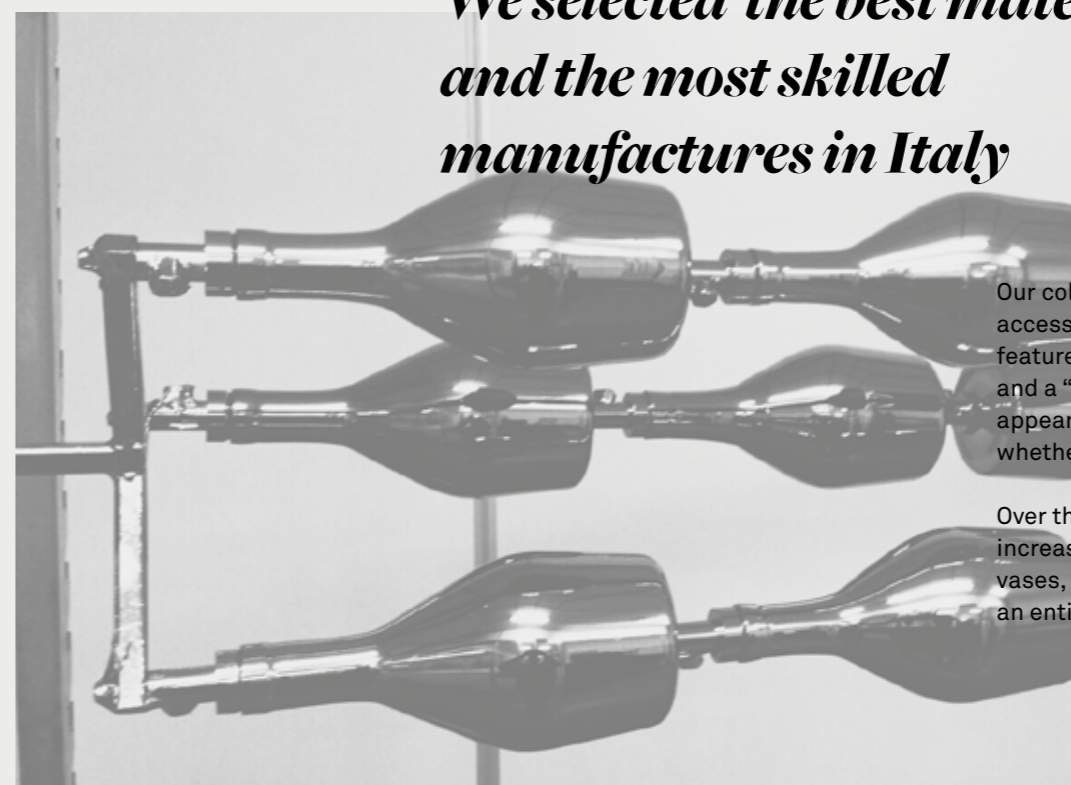
FOR ANY SALES INQUIRY  
PLEASE CONTACT  
[SALES@INCIPITLAB.COM](mailto:SALES@INCIPITLAB.COM)

[WWW.INCIPITLAB.COM](http://WWW.INCIPITLAB.COM)



Incipit is also a laboratory: conceived as a contemporary workshop, inspired by those of the Italian Renaissance, it is a training path where all parties involved work together, supporting young designers on all areas related to the design profession.

## *We selected the best materials and the most skilled manufacturers in Italy*



Our collection, including objects, lighting and accessories **for the home and contract** projects, features a certain sensitivity to materials and colours, and a “warm”, simple, yet not too minimal aesthetic appearance, which perfectly suit each kind of space, whether it’s modern or classic.

Over the last years, our products range became increasingly rich: along with items such as mirrors, trays, vases, bottles and candle-holders, we also manufacture an entire lighting line

# *our designers*

FOR US «MADE IN ITALY» MEANS  
COMMITTING TO THE HIGHEST STANDARDS:  
WE TAKE CARE OF ALL THE DETAILS  
WITH THE COLLABORATION OF OUR MANUFACTURERS,  
THE BEST OUR COUNTRY CAN OFFER.



WE KEEP LOOKING AT  
DESIGN WITH  
FRESH CONTEMPORARY EYES

WE SCOUT FOR  
THE MOST TALENTED  
YOUNG DESIGNERS

# *Made in Italy*

# *young & fresh ideas*





SILO CONTAINERS  
AGATA CEILING LAMP  
MOAI VASE



AGATA CEILING LAMPS  
BLOOM CENTERPIECE  
BARLUME TRIO OF CANDLESTICKS  
AND VASES



ALL COLOURS OF NASSA VASES  
TWO SIZES



MUSELET CONTAINER  
BELLE CAKE STANDS  
-  
MUSELET CONTAINERS





ELMA LAMP



DAMA CONTAINER WITH MIRROR  
THREE PIECES



POPUP WALL CLOCK  
—  
SULA CARAFES





ELMETTA SMART DESK LAMP  
—  
DETAIL OF ELMETTA DESK LAMP





MOAI VASE

—

VARIOUS NASSA VASES



BARLUME TRIO OF CANDLESTICKS  
AND VASES  
—  
SUNSET VASES





TULL DESK/FLOOR LAMP

—

TULL CEILING LAMP





AURORA TRAY  
BARLUME CANDLESTICKS AND VASE  
-  
AURORA TRAY



MUSELET CONTAINER  
-  
APP COAT HANGER







ELMA LAMP  
-  
MUSELET CONTAINER  
SULA VASE-CARAFES





TULL DESK/FLOOR LAMP  
BLOOM CENTERPIECE  
-  
MOAI VASE  
CANASTA CONTAINERS



THE COMPLETE FAMILY OF ELMA FLOOR LAMP  
AND ELMETTA DESK LAMP





OASI CONTAINER



SILO CONTAINERS

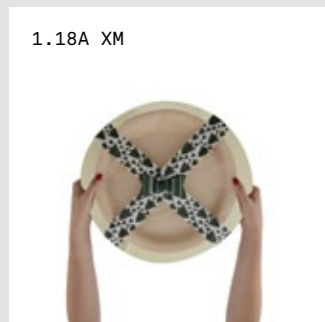
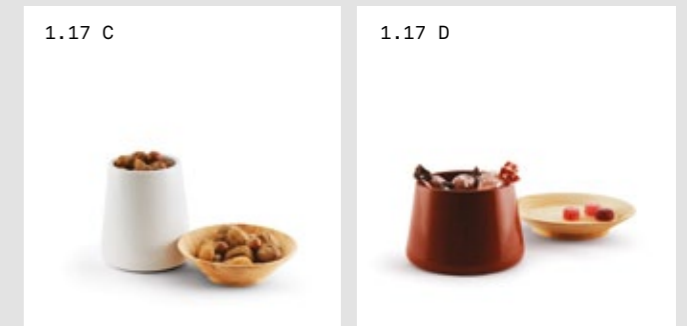
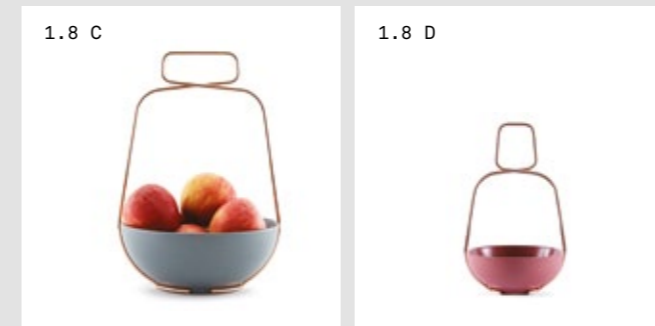
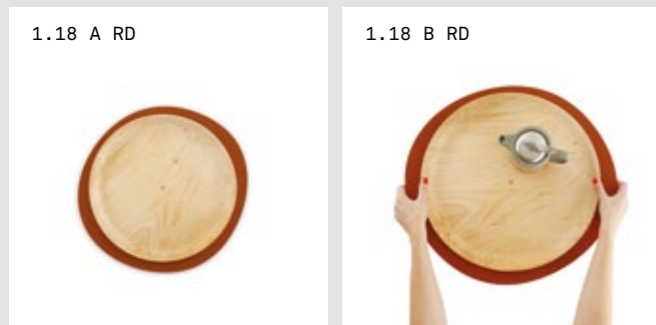
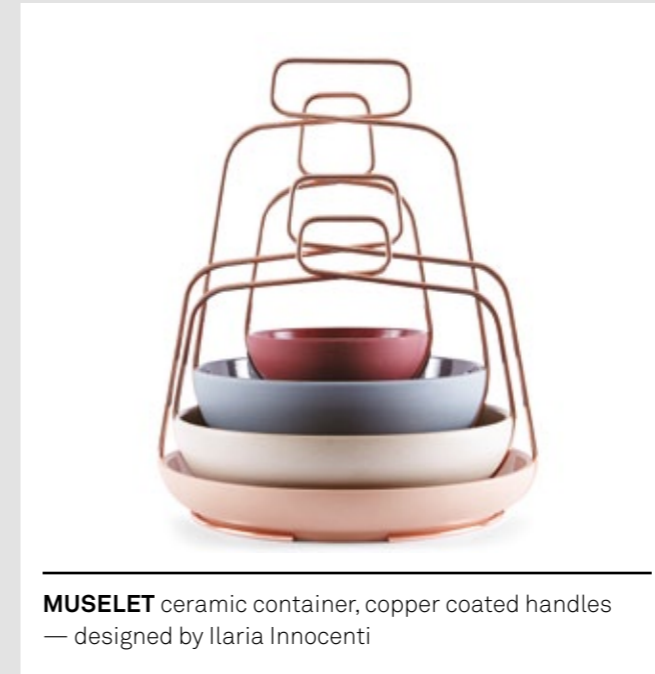
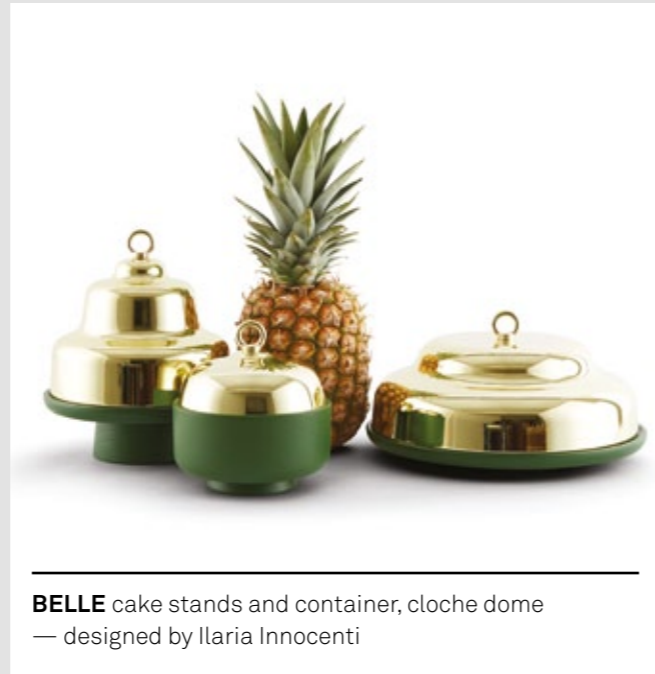
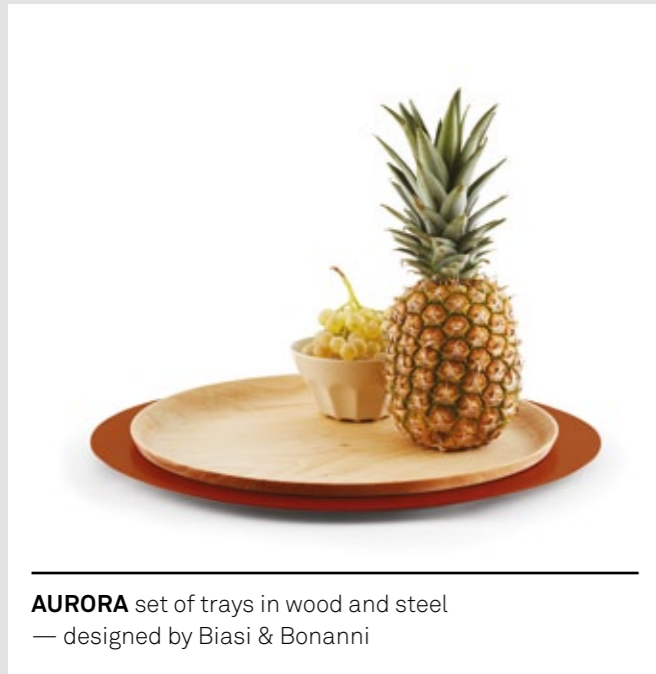


VIDE UMBRELLA STAND  
ELMA LAMP  
-  
AGATA LAMP





CANASTA CONTAINERS



*Serve & display*



**MOAI** stoneware vases  
— designed by Raul Frollà



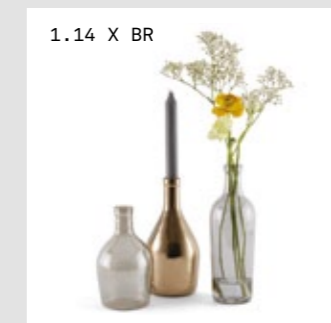
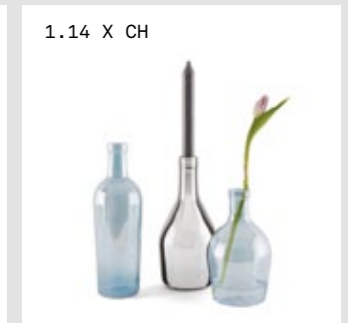
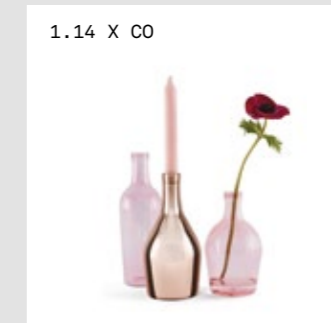
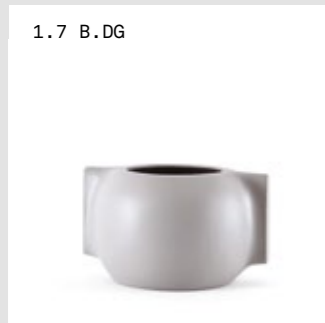
**SULA** Stoneware vase-caraffes  
— designed by Pietro Bastia



**SUNSET** borosilicate glass vases  
— designed by Manuela Di Loreto



**BARLUME** candlesticks and vases, borosilicate glass  
— designed by Filippo Castellani



*Flowers and more*

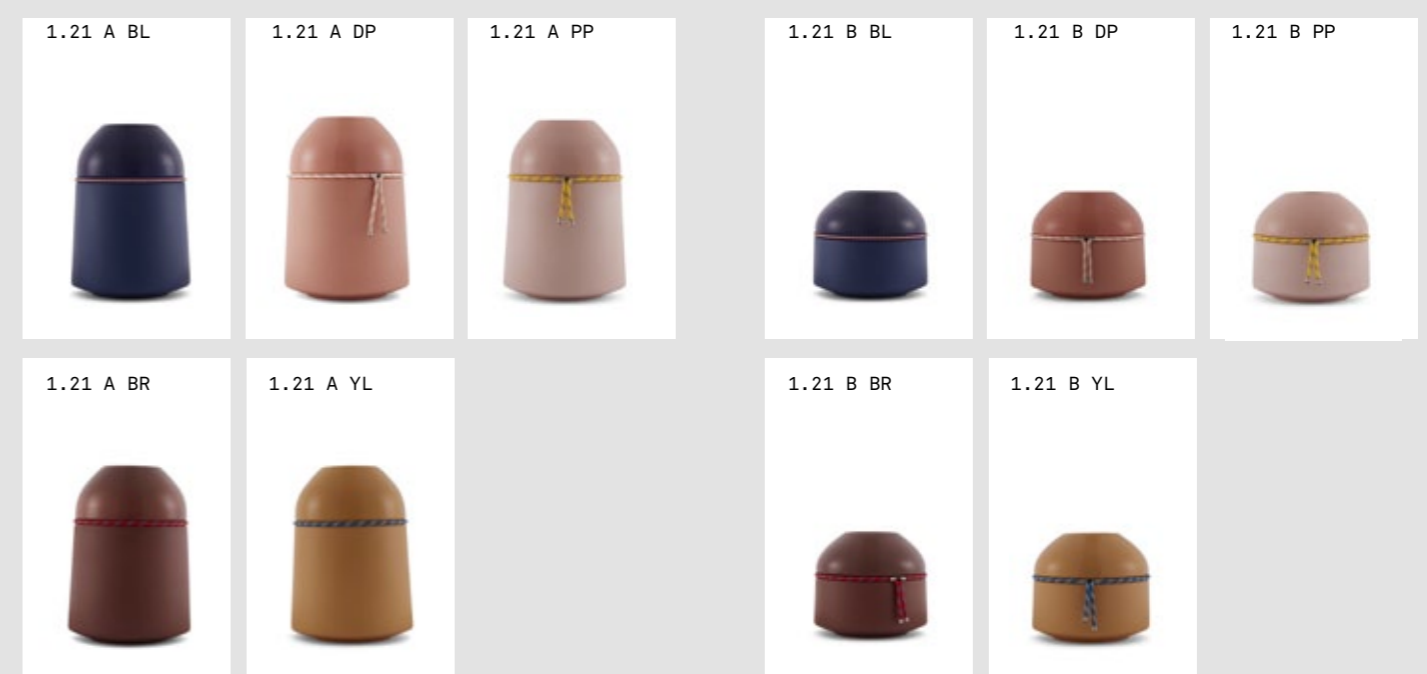
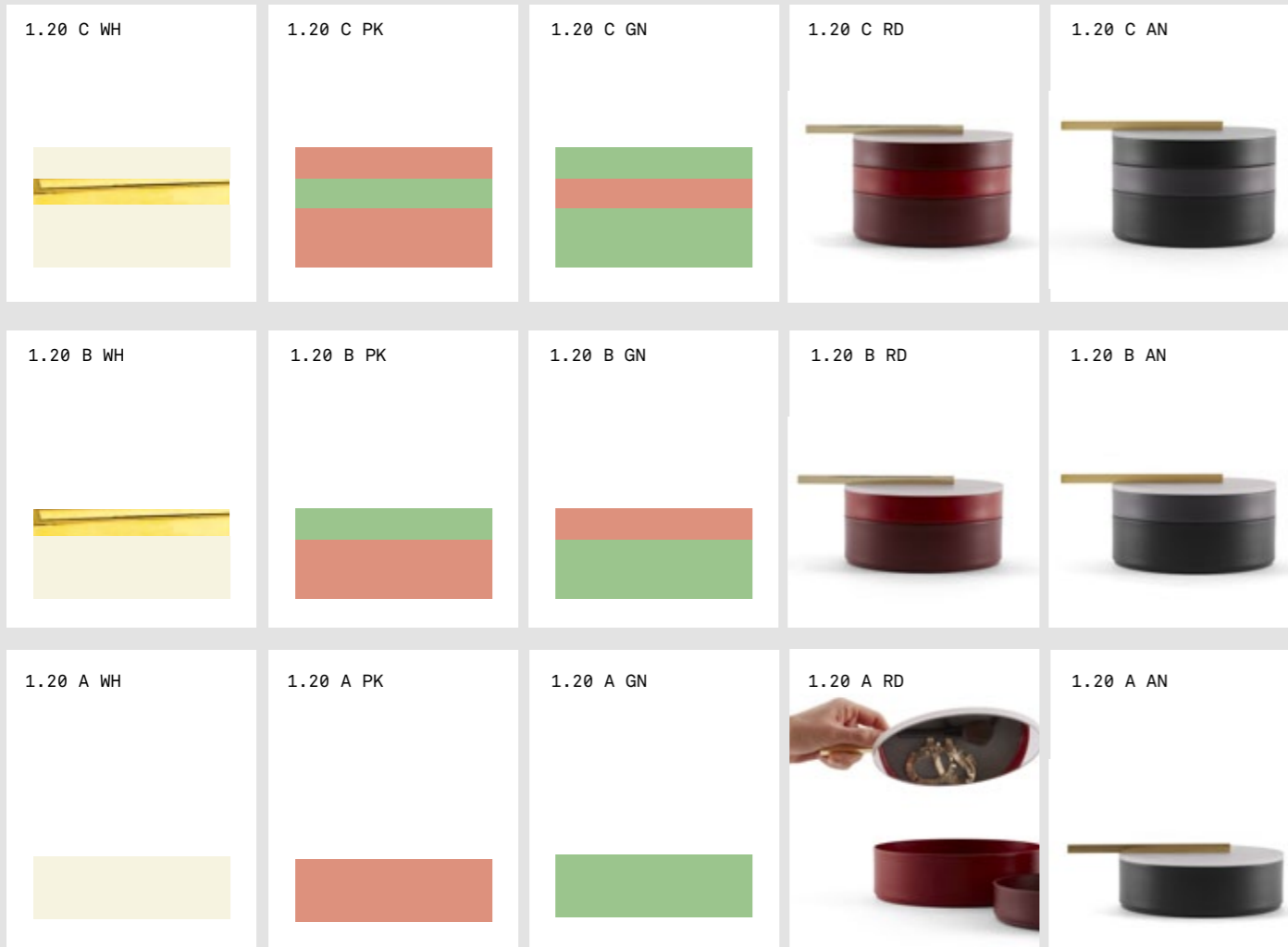




**DAMA** stackable metal containers with top with mirror, metallized brass handle  
— designed by Federica Biasi + Simone Bonanni



**NASSA** stoneware vases with a nautical rope in chromatic contrast  
— designed by Roberto Sironi





**OASI** Borosilicate glass containers with wooden lids  
— designed by Manuela Di Loreto



**BLOOM** steel spokes centrepiece  
— designed by Cristina Pettenuzzo



**POPUP** Metal wall clock with anodized face  
— designed by LIDO, Laboratorio Innocenti Design Office



**CANASTA** Enamel containers with steel cage  
— designed by Ilaria Innocenti

1.15 B



1.15 A



1.12 C AT



1.12 C TU



1.19 BK



1.19 RD



1.14 B BK BR



1.14 A BK BR



1.15 C



1.12 C CO



1.19 TN



1.14 B BK CO



1.14 A BK CO



1.14 B W NI



1.14 A W NI



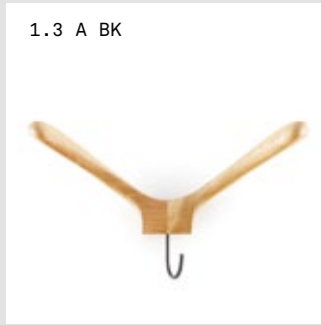
*Display, store  
& decorate*



**APP** Coat rack with coat hanger form, oak (natural finish)  
— designed by MATI



**VIDE** concrete&ceramic umbrella stand with accessory  
— designed by Paola Monaco & Laura Pessoni



---

# *Lighting Collection*

---

AGATA  
BY  
SOVRAPPENSIERO

GENERAL SPECS

Size

cm 52 × 15 × h75  
cm 18 × 15 × h85

Weight

kg 2,5

Package size

57 × 57 × 20 cm

Colours

White: RAL9010  
Black: RAL 7021  
Turquoise: RAL 6033  
Red: RAL 3005

Material

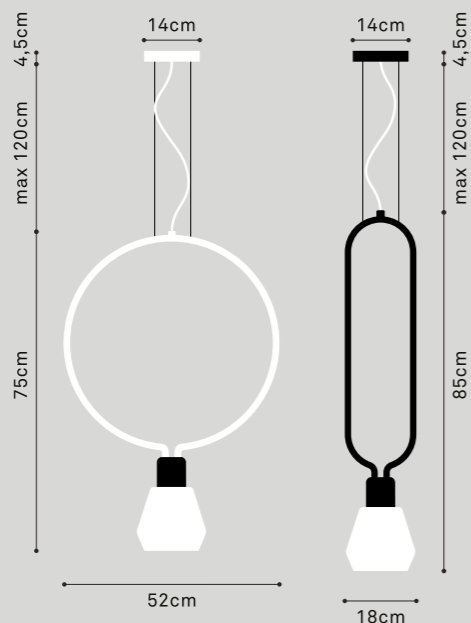
Steel (body), beech wood (socket)  
Pirex glass (diffuser)

Finish

Body powder coated, matte finish

Ceiling cup

round: 14 × 4,5 cm  
Same colour of the body



Electrical characteristics

Voltage 230V AC E27 – 110V AC E26

Electrical cable

Transparent 120 cm  
Double insulated, terminals with faston

Bulb (Not included)

Fluo/LED Energy Saver equivalent  
to Max 50W incandescent  
E27/E26

Certifications

Certified to EEC standards  
Manufactured with certified UL  
components to UL standards



COD: 2.5 B RD

COD: 2.5 B TU

COD: 2.5 A TU

COD: 2.5 A RD

*Agata*



COD: 2.5 A BK

COD: 2.5 B BK

COD: 2.5 B WH

COD: 2.5 A WH

COD: 2.1 A TU



COD: 2.1 A OR



COD: 2.1 A AN



COD: 2.1 A NI



COD: 2.1 A CO



COD: 2.1 B TU



COD: 2.1 B OR



COD: 2.1 B AN



COD: 2.1 B CO



COD: 2.1 B NI

# Tull

## GENERAL SPECS

**Size** cm 36 × 36 × 40

**Weight** kg 2,53

**Package size** cm 45×45×45

### Electrical characteristics

Voltage 230V AC E27 – 110V AC E26

### Bulb (Not included)

Fluo/LED Energy Saver equivalent to Max 70W incandescent E27/E26

Globe ø 10 cm

### Certifications

Certified to EEC standards  
Manufactured with certified UL components to UL standards

### Colours cap/cage

Matte Turquoise/Glossy Orange  
Matte Orange /Glossy Beige  
Matte Anthracite/Glossy Turquoise  
Metal: Black Nickel/Black  
Metal: Copper-Coated/White

### RAL reference for finishes

Turquoise: RAL 6027

Orange: RAL 2000

Beige: RAL 1015

Anthracite: RAL 7021

### Material

Cap: aluminum sheet 1.2 mm

Cage: Steel rod ø 5 mm

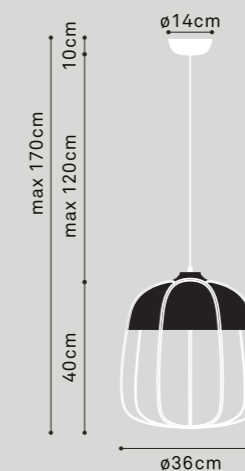
### Finish

Cap in matte paint

Cage in glossy paint

## TULL LAMP BY TOMMASO CALDERA

### TULL PENDANT



### Electrical cable

Transparent 2 × 0.75

Double insulated - terminals with faston

Standard length - 120 cm

### Ceiling cup

cm 14 × 14 × 10

aluminum sheet

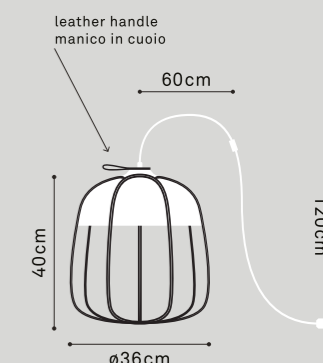
Same colour of the cap

for standard versions

Same colour of the cage but matte

for metal versions

### TULL DESK/FLOOR



### Electrical cable

Transparent - Standard length 180 cm

Pole transparent switch - Pin Plug

transparent molded

### Leather handle

on top of the cap for transport

ELMA  
BY  
TOMMASO CALDERA

GENERAL SPECS

**Size**  
cm 37 × 32 × 32

**Weight**  
kg 2,50

**Package size**  
cm 45×45×45

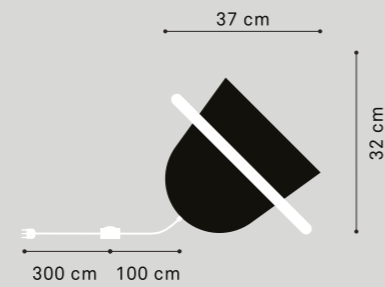
**Colours**  
White: RAL9010  
Anthracite: RAL 7021  
Sea Blue: RAL5001  
Deep Red: RAL3005

**Material**  
Cap: aluminum sheet 1.2 mm

**Finish**  
Cap in matte paints

**Processing**  
Cap: spin forming  
Handle: curved and milled wood

**Wooden handle**  
oak (natural stain)



**Electrical characteristics**  
Voltage 230V AC E27 – 110V AC E26

**Electrical cable**  
Transparent 4 × 0.75  
Double insulated - terminals with faston  
1 meter between lamp and pedal  
operated switch and 3 meters between  
min switch and plug

**Bulb (Not included)**  
Fluo/LED Energy Saver equivalent  
to Max 70W incandescent  
E27/E26  
Globe ø 10 cm

**Certifications**  
Certified to EEC standards  
Manufactured with certified UL  
components to UL standards



COD: 2.3 A BL



COD: 2.3 A RD



COD: 2.3 A WH



COD: 2.3 A AN

*Elma*



ELMETTA  
BY  
TOMMASO CALDERA

GENERAL SPECS

**Size**  
cm 16 x 19 x 17

**Weight**  
kg 0,81

**Package size**  
cm 30x30x30

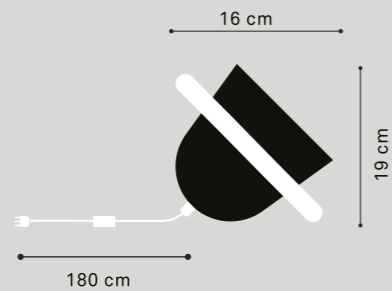
**Colours**  
White: RAL9010  
Anthracite: RAL 7021  
Blue: RAL 5019  
Red: RAL 3020  
Mustard: RAL 1032  
Olive green: RAL 6021

**Material**  
Cap: aluminum sheet 1.2 mm

**Finish**  
Cap in matte paints

**Processing**  
Cap: spin forming  
Handle: curved and milled wood

**Wooden handle**  
oak (natural stain)



**Electrical characteristics**

Voltage 230V AC E14 – 110V AC E12

**Electrical cable**

Transparent 180 cm  
Double insulated - terminals with faston  
Pole transparent switch  
Pin Plug transparent molded

**Bulb (Not included)**

Fluo/LED Energy Saver equivalent  
to Max 46W incandescent  
E14/E12  
Globe Ø5 cm

**Certifications**

Certified to EEC standards  
Manufactured with certified UL  
components to UL standards



COD: 2.4 A WH



COD: 2.4 A GR



COD: 2.4 A YL



COD: 2.4 A BK



COD: 2.4 A BL



COD: 2.4 A RD

*Elmetta*





COD: 2.4 B RD



COD: 2.4 B BK



COD: 2.4 B SL

# Elmetta Smart



## ELMETTA SMART BY TOMMASO CALDERA

### GENERAL SPECS

**Size**  
cm 16 x 19 x 17

**Weight**  
kg 0,81

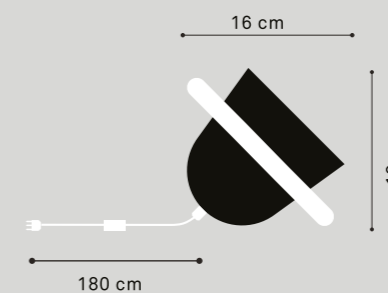
**Package size**  
cm 30x30x30

**Handle colours**  
Silver: RAL 7011  
Black: RAL 9005  
Red: RAL 3005  
Green: RAL 6011  
Brass: RAL 8000  
Anthracite: RAL 5008  
Pink: RAL 4004

**Material**  
Cap: aluminum sheet 1.2 mm

**Finish**  
Cap in anodized aluminium

**Processing**  
Cap: spin forming  
Handle: bent metal



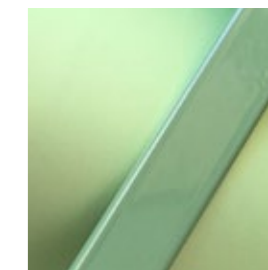
**Electrical characteristics**  
Voltage 230V AC E14 – 110V AC E12

**Electrical cable**  
Transparent 180 cm  
Double insulated - terminals with faston  
Pole transparent switch  
Pin Plug transparent molded

**Bulb (Not included)**  
Fluo/LED Energy Saver equivalent  
to Max 46W incandescent  
E14/E12  
Globe Ø5 cm

**Certifications**  
Certified to EEC standards  
Manufactured with certified UL  
components to UL standards

### NEW COLOURS



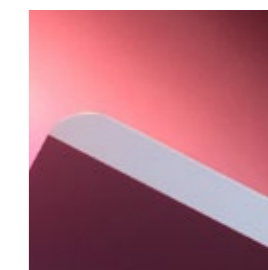
COD: 2.4 B GN



COD: 2.4 B BR



COD: 2.4 B AN



COD: 2.4 B PK



FOTO FROM ZANOTTA  
NEWS CATALOGUE 2017  
- SET DESIGN, STYLING:  
STUDIO SALARIS  
- PHOTO: BEPPE BRANCATO,  
LEO TORRI



# *catalogues & publications*



ZANETTE



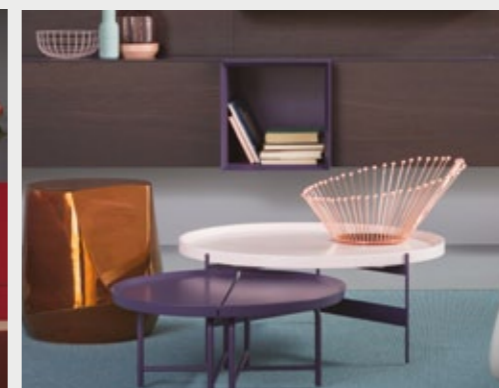
FOSCARINI CATALOGUE



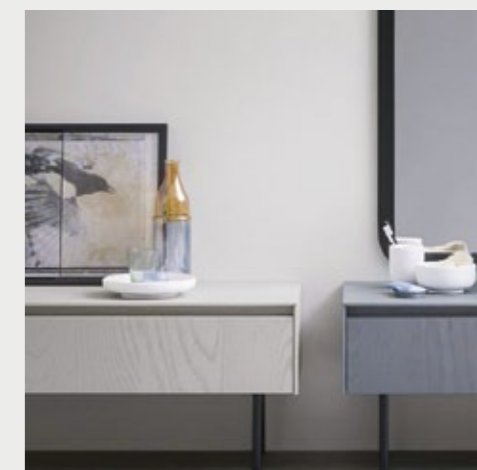
FOSCARINI CATALOGUE



PIANCA



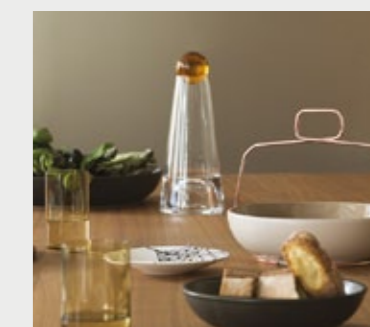
PIANCA



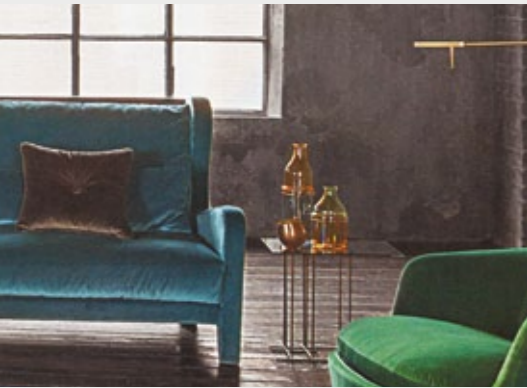
REXA DESIGN



BULTHAUP CATALOGUE



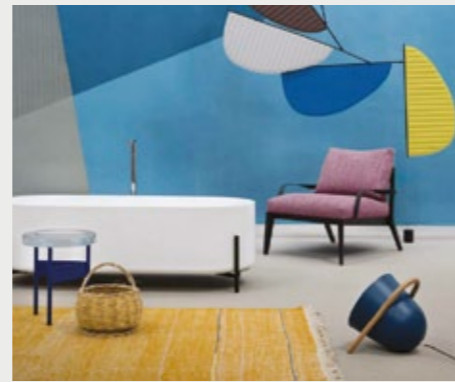
BULTHAUP CATALOGUE



ELLE DECOR ITALIA



DCASA - LA REPUBBLICA



LIVING - CORRIERE DELLA SERA



HEARST HOME



CASAFACILE



LIVING - CORRIERE DELLA SERA



HEARST HOME

COLLABORATIONS  
—  
STYLING  
FOR MAGAZINES



LA CUCINA ITALIANA



MARIE CLAIRE MAISON ITALIA



LIVING - CORRIERE DELLA SERA

# Making the news

**SURFACE**

GIOIA

**COSMOPOLITAN**

design\milk

LA CUCINA ITALIANA

SCHÖNER WOHNEN STYLING

CORRIERE DELLA SERA

INTERIOR DESIGN

ELLE DECORATION

Living

DECOR

ABITARE

G NAMBOX

DCASA

HEARST home

marie claire Maison

designboom®

Design\*Sponge

domus

CASA VOGUE

dwell

WOHNREVUE

CASA facile

ELLE DECOR (ITALIA)

AD ARCHITECTURAL DIGEST

[家|居|廊] DECORATION

IO DONNA

ZEITUNG MAGAZIN

COOL HUNTING

HOME JOURNAL

NOTCOT.

Volkskrant Magazine

INTERNI



Archiproducts design selection  
Fuorisalone 2015/2017



Selected by Architonic  
Maison & Objet Paris 2016



Shortlisted  
for Young and Design 2014:  
— Tull by Tommaso Caldera  
— Artico by Sovrappensiero



Belle by Ilaria Innocenti selected for  
Trend Bible,  
Home and Interior trends 2017/18



Muselet by Ilaria Innocenti  
selected for  
Trend Book Chlorosphere 2015/16

Shortlisted  
for Young and Design 2015:  
— Elma by Tommaso Caldera

Shortlisted  
for Young and Design 2017:  
— Elmetta Smart  
by Tommaso Caldera



**INCIPIT**

© Incipit Lab srl  
Milan—Italy

**identity & graphic design**  
Marta Bernstein

**photos**  
Matteo Imbriani

**styling**  
Ilaria Innocenti  
Cora Vohwinkel

**WWW.INCIPITLAB.COM**  
@INCIPITLAB #INCIPITLAB

