

GHIDINI
1961
GHIDINI

MATERIALS AND FINISHES

Metal finishes

All our finishes are handmade, and all surfaces are lacquered to provide a long lasting durability



Polished brass PB - Cat. A



Chrome CH - Cat. A



Satin Platinum SP - Cat. B



Orbital Bronze OB - Cat. B



Satin brass SB - Cat. B



Light burnished brass LB - Cat. B



Satin Titanium ST - Cat. B



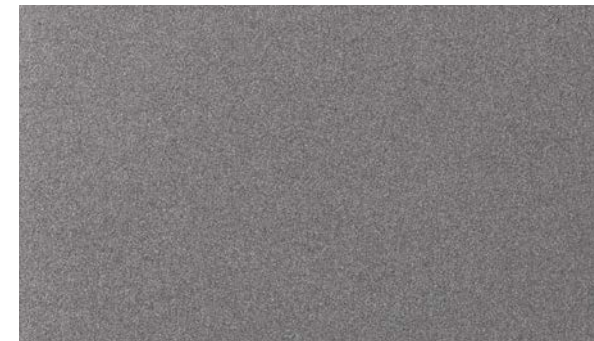
Brushed Copper BC - Cat. B



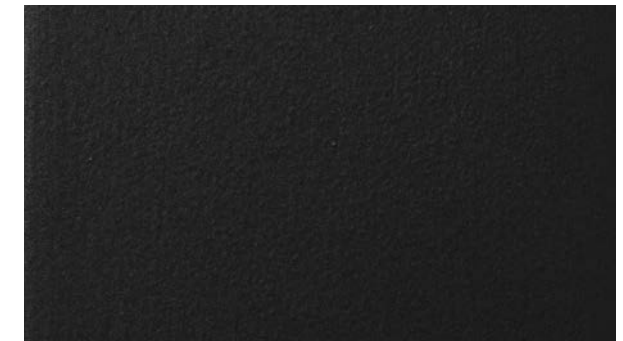
Dark burnished brass DB - Cat. B



Black Gold BG - Cat. B



Deep Anthracite DA - Cat. C



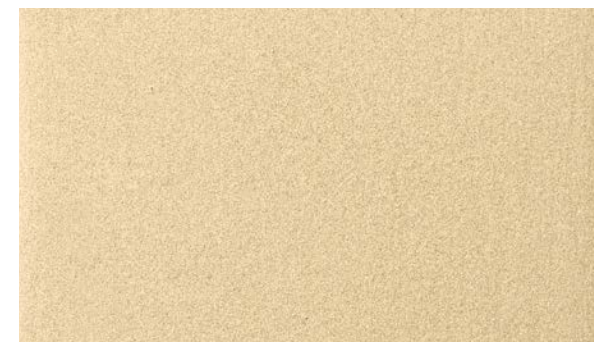
Deep Dark DD - Cat. C



Brown burnished brass BB - Cat. B



Brushed Silver BS - Cat. B



Deep Gold DG - Cat. C



Deep Silver DS - Cat. C

Marbles Collection



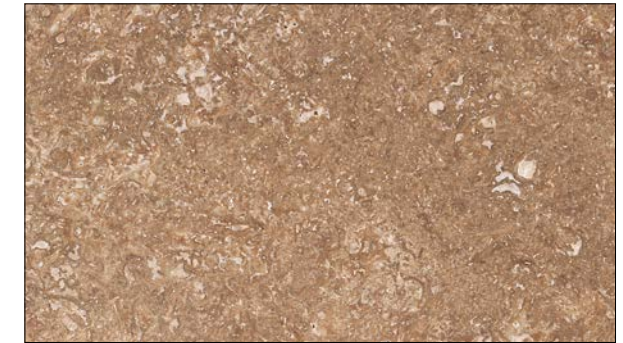
Calacatta Gold CG - Cat. A



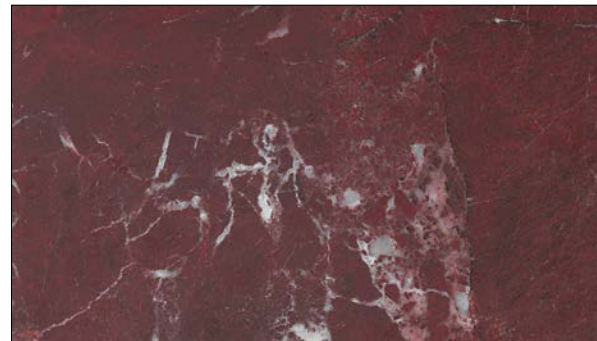
Calacatta Purple CP - Cat. A



Classic Travertine TC - Cat. C



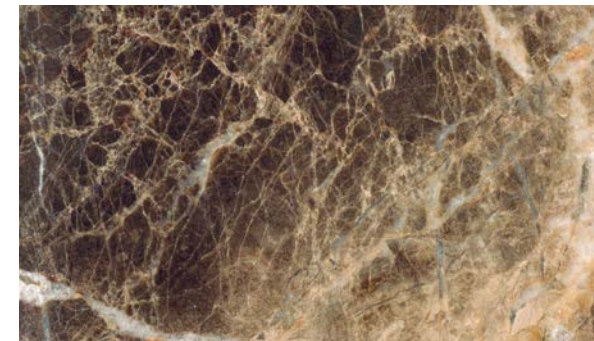
Travertine Walnut TW - Cat. C



Rosso Levanto RL - Cat. A



Portuguese Rose PR - Cat. A



Emperador Dark ED - Cat. C



Carrara White CW - Cat. C



Fior di pesco FP - Cat. B



Yellow Siena YS - Cat. B



Verde Alpi VA - Cat. C



Black Marquina BM - Cat. C



Sahara Noir SN - Cat. B



Red Travertine TR - Cat. B

Woods Collection



Natural Oak



Bolivar



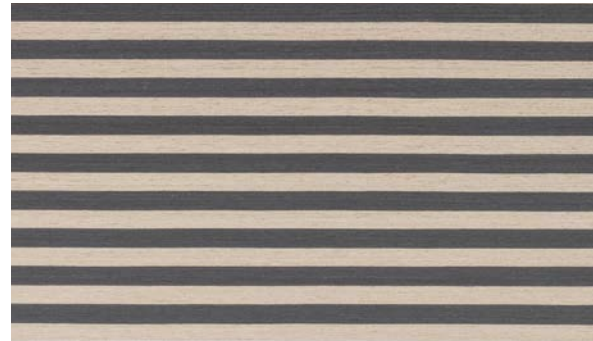
Canaletto Walnut



Mahogany

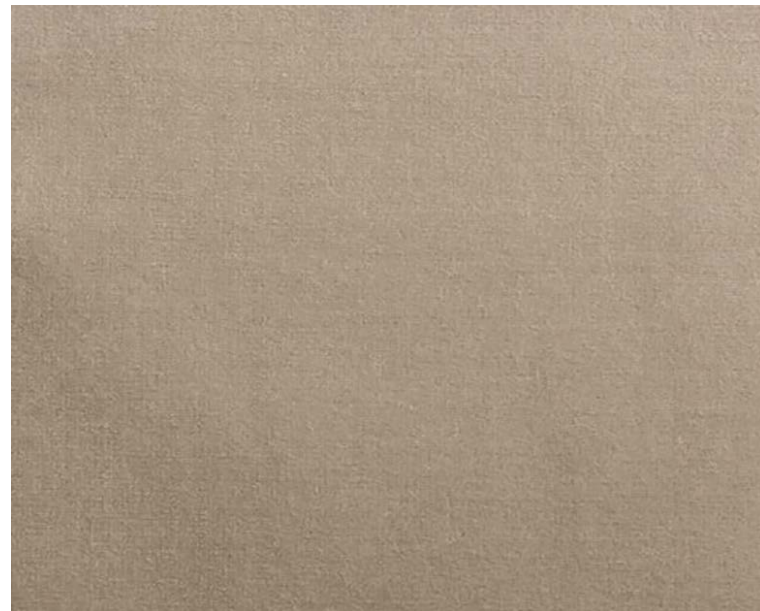


New Lime



Caleido

Adamo&Eva



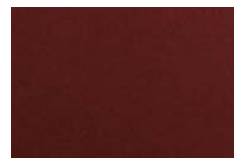
129 - roccia

Category
Cotton Velvet

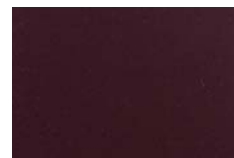
Composition
100%CO
Weight: g/ml 630
Width: cm 140 - 55.12 inches
Cfa: Yes
Martindale: 50.000

Price Category A

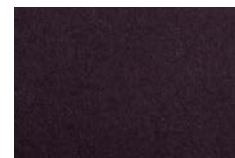
Washing Instructions



116 - cayenne



119 - prugna



106 - mirtillo



168 - mousse



145 - olive



129 - roccia



107 - antracite



169 - cactus



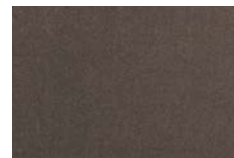
104 - indigo



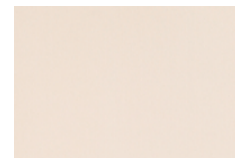
170 - notte



175 - fumo



137 - cenere



178 - ostrica



115 - safran



189 - verde inglese

An exquisite quality of Italian-made cotton velvet that is soft, versatile and hard-wearing. A palette of 13 colours comprising striking, traditional and neutral shades.

Cord



053

Category
Cotton Velvet

Composition
100% cotton, groundmaterial: 100% cotton
Width: 140 cm
Durability: 100 000 Martindale

Price Category A

Washing Instructions



053



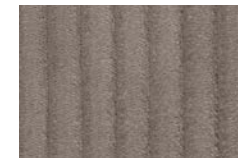
070



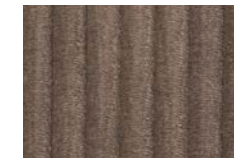
064



050



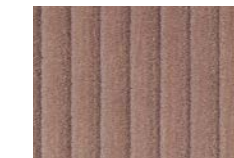
091



020



037



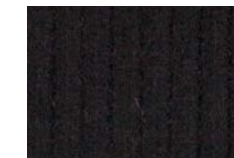
060



033



038



099

Bogardine



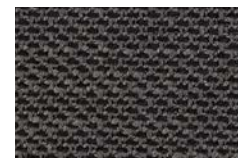
003 - perla

Category
Jacquard

Composition
31%CV 26%CO 24%PAN 10%LI 8%WO 1%PA
Weight: g/ml 960
Width: cm 140 – 55.12 inches
Curtain, Upholstery For Medium/Hard Use
Cfa: Yes
Martindale: 40.000

Price Category B

Washing Instructions



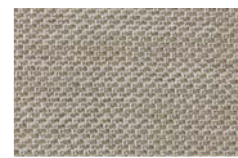
001 - quasinero



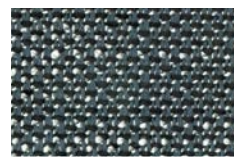
002 - taupe



003 - perla



004 - naturale



008 - ottanio



009 - bianco

Yarns of different types and thicknesses create a textural weave and confer a slight matelassé effect to the surface. Soft and consistent to the hand, hardwearing and ideal for heavy duty seating.

Clay



0010

Category
Upholstery

Composition
76% Linen, 21% Cotton, 3% Polyester
Pattern: Solid
Weight: 770 g/lin.m
Width: 140 cm
Durability: 45.000 Martindale
Pilling: 4
Lightfastness: 5

Price Category B

Washing Instructions



002



005



0010



009

Bringing together both natural beauty and a sense of finesse, the creative team have mixed colours of yarn in warp and weft to create an elegant yet casual fabric. The result has a unique structured surface that adds an extra dimension to any interior design scheme.

With a back cloth that gives extra stability, Clay is perfect for upholstering furniture.

The colours are inspired by the designer's love of both art and interiors and include cool shades of cement, blue, and salvia but also the natural shades of wood and clay.

Clunis



002

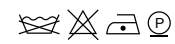
Category
Bouclé

Composition
33%WO-25%PL-25%PC-15%CO-2%PA
Width: 137 cm+/- 3%
Weight: 4935 gr/ml - 682 gr/sqm +/- 5%
Martindale: 40000 cycles+/-

Flame resistance
BS 5852-1 (1979) CIGARETTE
BS 5852:2006 CIGARETTE
BS 5852-1 (1979) MATCH
BS 5852:2006 MATCH
CAL TB 117:2013

Price Category B

Washing Instructions



002



006



026



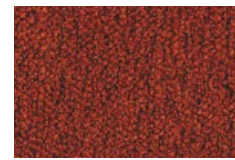
000



029

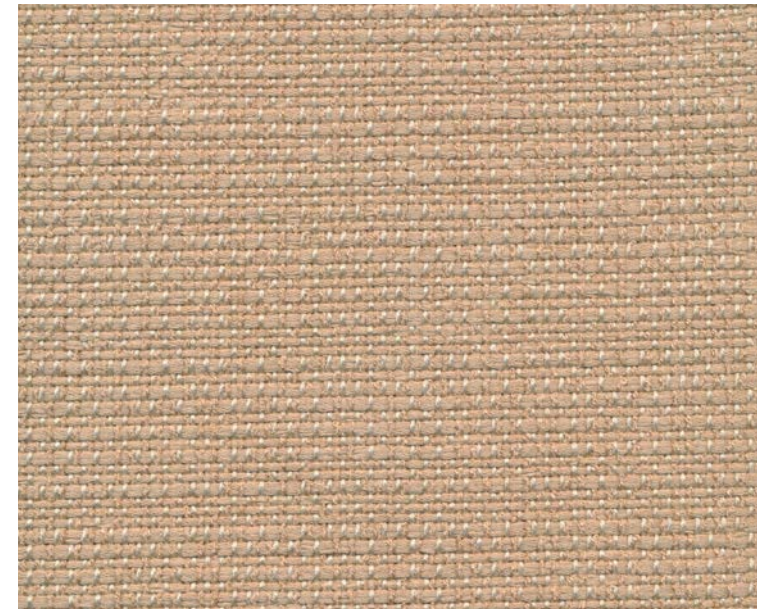


030



025

Lizza



011

Category

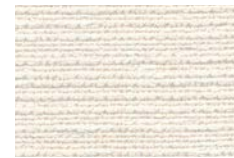
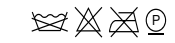
Tape Yarn fabric

Composition
68%VI-29%CO-3%LI
Width: 140 cm+/- 3%
Weight: 1000 gr/ml - 714 gr/sqm +/- 5%
Abrasion Martindale: 25000 cycles+/- 10%

Flame resistance
BS 5852-1 (1979) MATCH

Price Category B

Washing Instructions



030



121



120



092



011



070



043

Safire



003



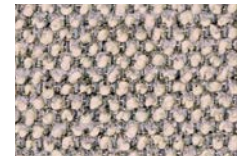
003



004



010



008

Category

Boucle and chenille

Composition

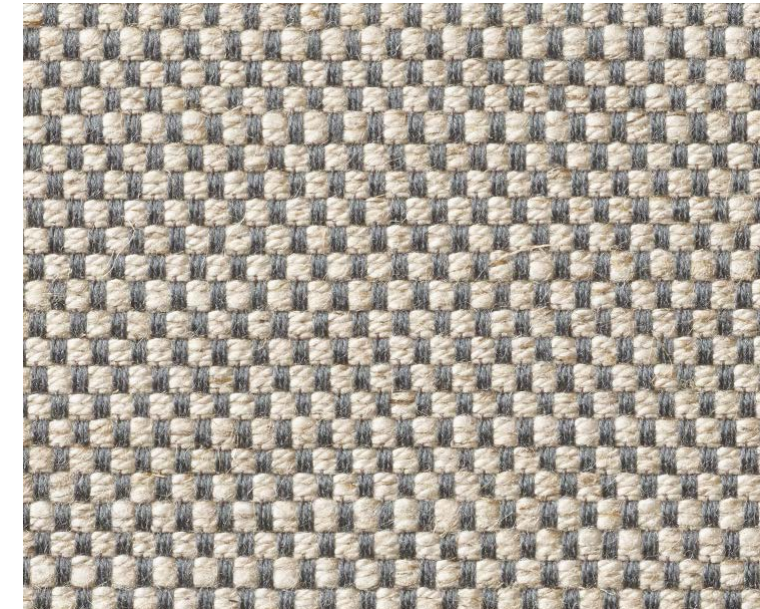
43% Viscose, 17% Acrylic, 15% New wool, 9% Cotton, 8% Linen, 8% Polyester
 Weight: 1010 g/lin.m
 Width: 140 cm
 Durability: 44 000 Martindale
 Pilling: 3
 Lightfastness: 6
 Sustainability: Greenguard Certification

Price Category B

Washing Instructions



Sinequanon



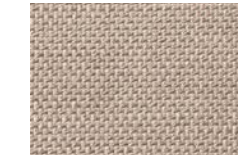
01 - argento



01 - argento



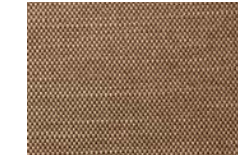
02 - taupe



05 - stone



07 - perla



37 - caffè arabica



08 - linen

Category

Linen and Viscose fabric

Composition

60%CV 16%LI 13%CO 6%PES 5%PAN
 Weight: g/ml 663
 Width: cm 140 - 55.12 inches
 Cfa: Yes
 Martindale: 35.000

Price Category B

Washing Instructions

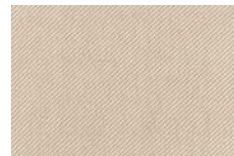


Panama weave with slightly shot yarns. Even here the Dedar offer extends with the linen and viscose cloth, which is durable, bright, boasts a rich texture (Flair, Fifty Fifty, Chambray, Aut Aut, Arbus). A special, careful blend of linen and viscose and a new construction which enables a reduction of the textile weight whilst guaranteeing the aesthetic quality, usage and durability, and also offering good value. This textile, just like the others in this range, feature a waterrepellent treatment which offers specific protection from liquids and oils.

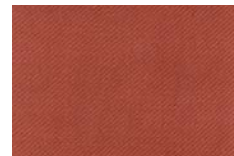
Twiltwenty



4 - cipria



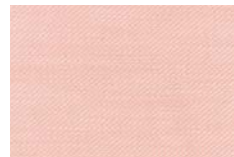
4 - cipria



20 - ruggine



7 - nero



9 - pesco



3 - corda

Category

Twill

Composition

100%PI Flame Retardant
 Width: 140 Cm
 Weight: 630 Gr
 Made in: Italy
 Martindale: 80000
 Pilling: 4/5 (Scale 1-5)
 Colour Fastness To Light: 7 (Scale 1-8)
 Colour Fastness To Crocking: 4/5 Dry 4/5 Wet (Scale 1-5)
 Colour Fastness To Chlorinated Water: 4/5 (Scale 1-5)
 Colour Fastness To Sea Water: 4/5 (Scale 1-5)
 Tensile Strength: Class A (En 14465)
 Tear Strength: Class A (En 14465)
 Seam Slippage: Class A (En 14465)
 Other Certifications: Yarns Certified Oeko-Tex
 Fire Certifications: France M1 Nfp902-503-504-505, Germany B1 Din 4102-1, Imo 8 Upholstery, Italia Classe 1 Tendaggi, Uk Cigarette Source 0, Uk Contract Curtains Bs5867, Uk Contract Upholstery Bs7176, U.s.a. Cal Tb117

Price Category B

Washing Instructions

Bonsai



020



021



093



072



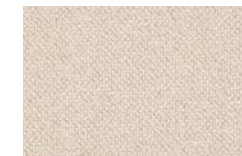
051



050



070



071



077

Category

Upholstery

Composition

48% PAN 29% CO 23% PES
 Weight: 140 cm
 Width: 905 per linear meter/g
 Width: 646 per square meter/g
 Durability: 50 000 Martindale
 Seam slippage: <6mm
 Pilling (DIN EN ISO 12945-2)
 Rub fastness: Dry 4-5 Wet 4-5
 Lightfastness: for medium colours 5

Flame retardent

BS 5852: Part 1: 1979
 Ignition source 0 (Cigarette)

Fabric

Wave Dobby

Price Category C

Washing Instructions

A classic twill. A particularly thick thread/yarn highlights the "Z" diagonal motif which makes the fabric more dynamic. The shiny and matt threads enhance the effect of the light on the surface.

Diago



500

Category

Multi-Yarn Jacquard

Composition

37%CO-55%VI-8%LI

Width: 140 cm +/- 3%

Weight: 950 gr/ml - 679 gr/sqm +/- 5%

Abrasion Martindale: 27000 cycles +/- 10%

Flame resistance

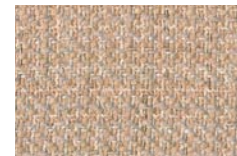
BS 5852-1 (1979) MATCH

Price Category C

Washing Instructions



500



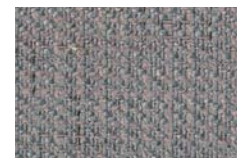
510



511



530



520

Sofi



187-101

Category

Cotton and viscose frisé

Composition

46%CO-47%VI-7%LI

Width: 850 gr/ml - 607 gr/sqm +/- 5%

Weight: 850 gr/ml - 607 gr/sqm +/- 5%

Martindale: 27000 cycles +/- 10%

Flame resistance

BS 5852:2006 CIGARETTE

BS 5852-1 (1979) MATCH

BS 5852:2006 MATCH

Price Category C

Washing Instructions



187-101



187-000



187-100



187-029



187-090



187-062

Kairos collection



1716 - doeskin

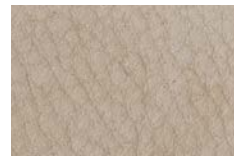
Category

Nabuck leather

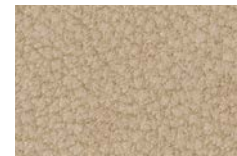
Composition

Bovine of European origin in Nabuk finishing, natural grain.
 The average size of each skin is around 5.0 sqm. Chrome tannage.
 Aniline dyed, finished with high quality oils. Suede look, soft and velvet touch.
 The possible presence of any imperfections testify the authenticity and the natural look of pure aniline leather.
 Average thickness 1,2 - 1,4 mm.

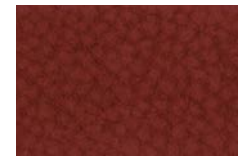
Price Category A



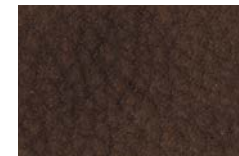
1719 - cangaroo



1716 - doeskin



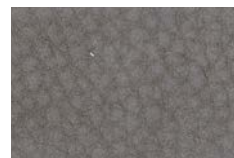
1714 - lucky



1704 - chocolate forest



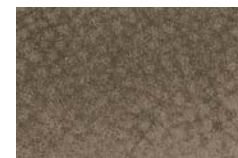
1701 - caqui



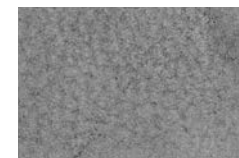
1711 - cenere



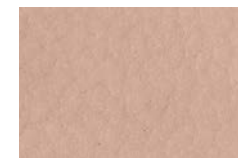
1721 - ematite



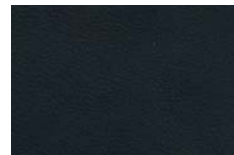
1715 - elephant



1710 - plomo



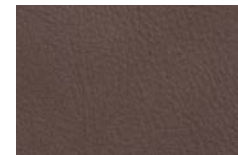
1718 - nude



1



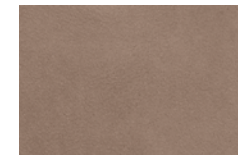
5



6



7



20

Tivano



3611 - corda

Category

European cattle

Composition

Raw material: European cattle
 Tanning: Mineral
 Protection: Semianiline
 Description: Waxed hand buffed
 Thickness: 1,2 - 1,4 mm
 Average size: 5,0 m²

Dry finishing locking	EN ISO 11644	≥ n.a. N/cm
Tear resistance	EN ISO 3377-1	≥ 20 N/cm
Flexing endurance	EN ISO 5402	≥ 20.000 runs
Dry rub colour fastness	EN ISO 11640	
	150 runs	≥ 4 grey scale
Wet rub colour fastness	EN ISO 11640	
	25 runs	≥ 4 grey scale
Light fastness	EN ISO 105-B	≥ 4 blue scale
Heat colour fastness	EN ISO 17228	≥ 4 grey scale

Avoid exposure to direct sunlight and heat sources
 Clean frequently and gently with a soft cloth
 Remove stains with a damp cloth or with a specific cleaning product

Price Category A



3611 - corda



3606 - tobacco



3603 - militare



3612 - fumo

Aida collection



Daino

Category

Nappa Smooth leather

Composition

Average size 4.5-4.8 sqm, thickness 0.9-1.1 mm.

Chrome tannage.

Bovine leather with smooth aspect, aniline finished with some oils and waxes, produced on European bull.

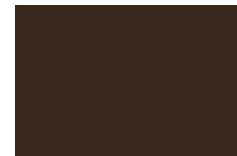
Aniline dyed, finished with high quality oils. Soft article with a slight two tones effect, emotional touch.

The possible presence of any imperfections and color variations are typical for this type of leather as they testify the authenticity and the natural look of pure aniline leather.

Price Category B



Daino



Coffee



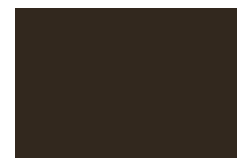
Tan



Saddle



Blackberry



Spruce



Nocturne



Mud



Grey



Sand

Freddie collection



2

Category

High quality bovine leather with full natural grain

Composition

Bovine of European origin, finished thickness 1.4 mm.

Flammability of fabrics – Upholstered furniture for maritime use – IMO FTPC 8 (par. 7,2-7,3)

Flammability of fabrics – Upholstered furniture BS 5852-1:1979 (Crib 0 – Crib 1)

Flammability of fabrics – TB 117:2013

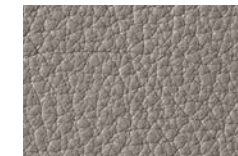
Resistance to bending

UNI EN ISO 5402-1 > 50,000 cycles – unaltered

Price Category B



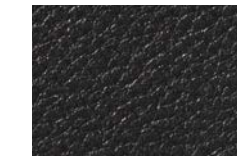
2



3



6



8

Linea collection



647 - grigio perla

Category

High quality bovine leather with lightly buffed natural grain

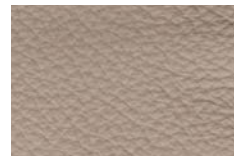
Composition

Bovine of European origin, lightly buffed natural grain, finished thickness 0.9 - 1.1 mm.

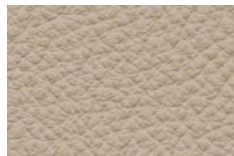
The average size of each hide is around 4.8 - 5.0 sqm. Chrome tannage.

Through dyed; finishing with resins and pigments. Article with a pigmented and protective coat, with a soft, waxy feel and semi-matt appearance.

Price Category C



629 - stone



647 - grigio perla



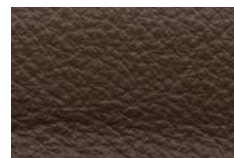
677 - malt



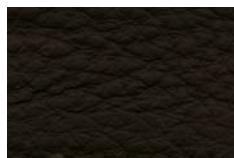
660 - asfalto



675 - new grey



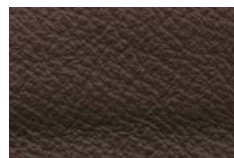
612 - castagna



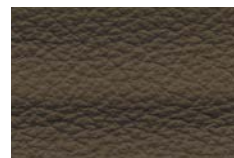
611 - testa moro



656 - cotto



610 - mogano



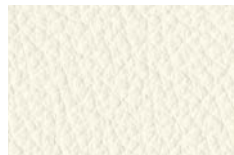
632 - verdone



622 - nero



619 - giallino



634 - gesso



674 - octane

Cuoio Leather

Only for Frame and Flo family of seaters



naturale

Composition

Bovine of European origin in Nabuk finishing, natural grain.

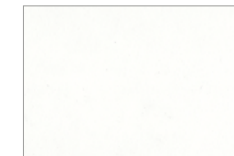
Average thickness 1.8/2.0 mm. Chrome tannage.

Aniline dyed with pigmented finish.

The possible presence of any imperfections testify the authenticity and the natural look of pure cuoio leather.



avorio



bianco



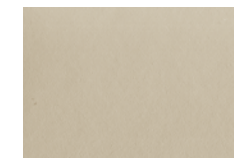
grigio



naturale



nero



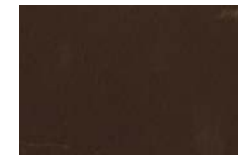
nocciola



rosso bulgaro



sabbia



tabacco



testa di moro



tortora



verde fango