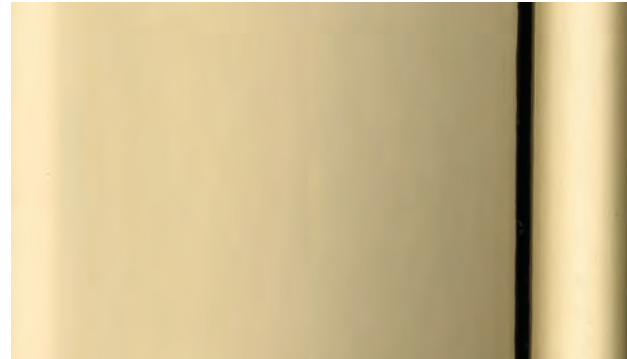




**Ghidini 1961**

**MATERIALS  
COLLECTION 2022**

# METAL FINISHES



Polished brass PB



Chrome CH



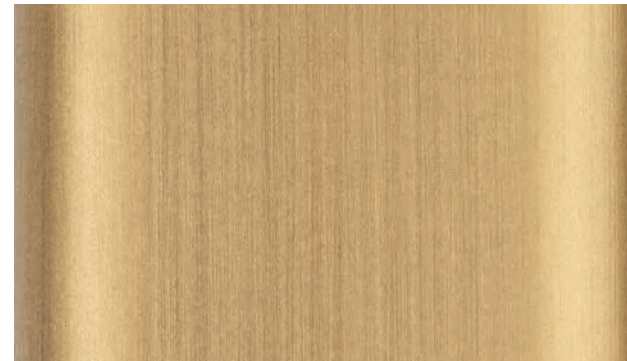
Satin Platinum SP



Orbital Bronze OB



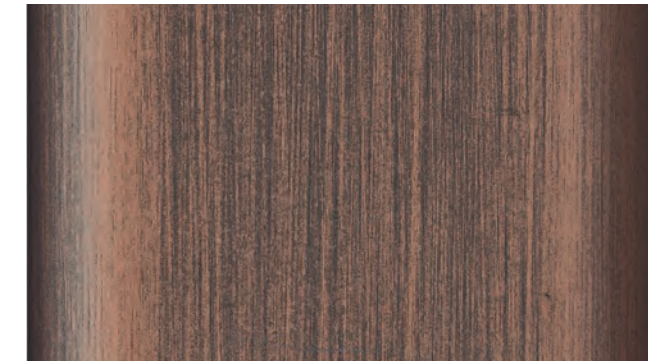
Satin brass SB



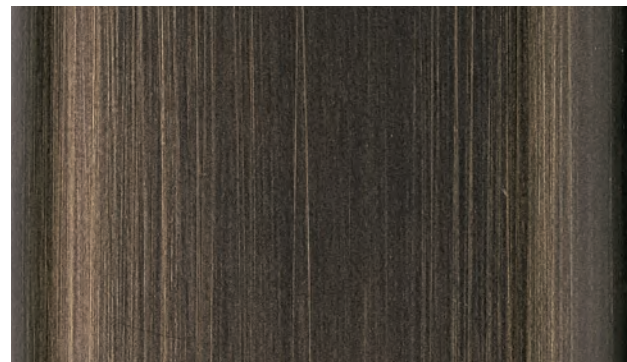
Light burnished brass LB



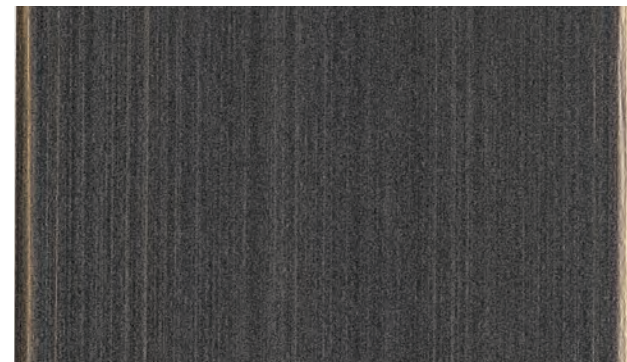
Satin Titanium ST



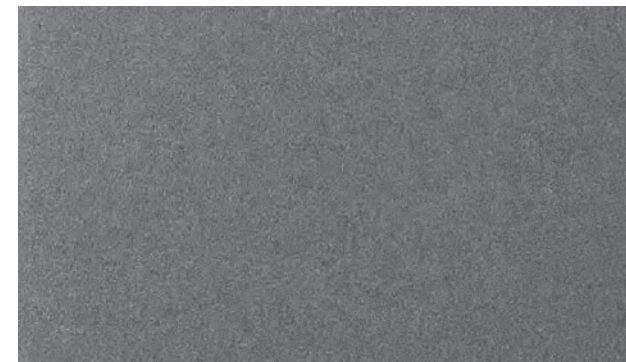
Brushed Copper BC



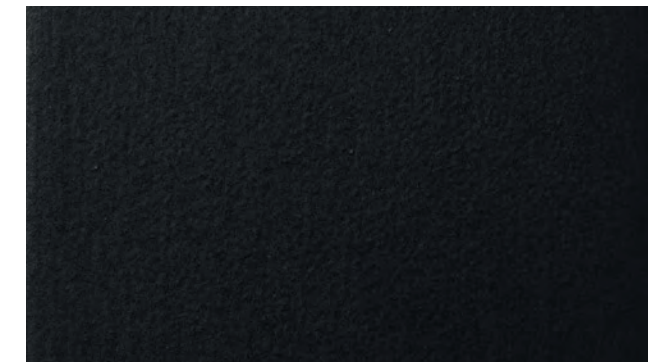
Dark burnished brass DB



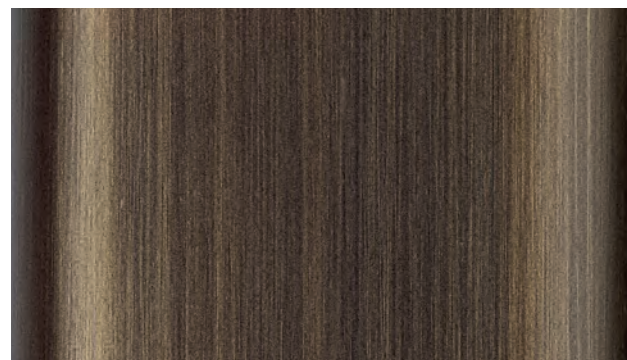
Black Gold BG



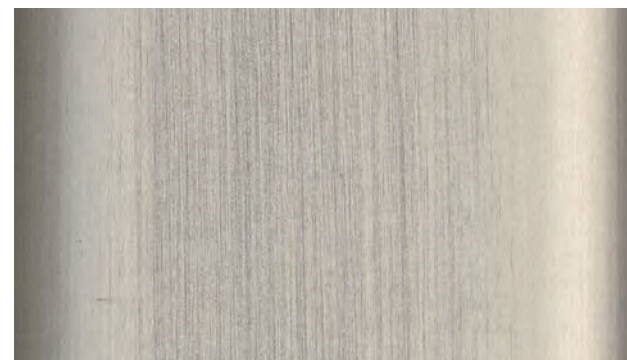
Deep Anthracite DA



Deep Black DB



Brown burnished brass BB



Brushed Silver BS



Deep Gold DG



Deep Silver DS

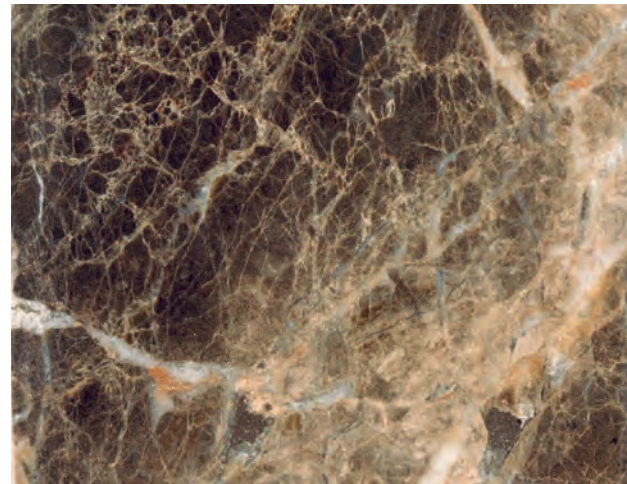
# MARBLE COLLECTION



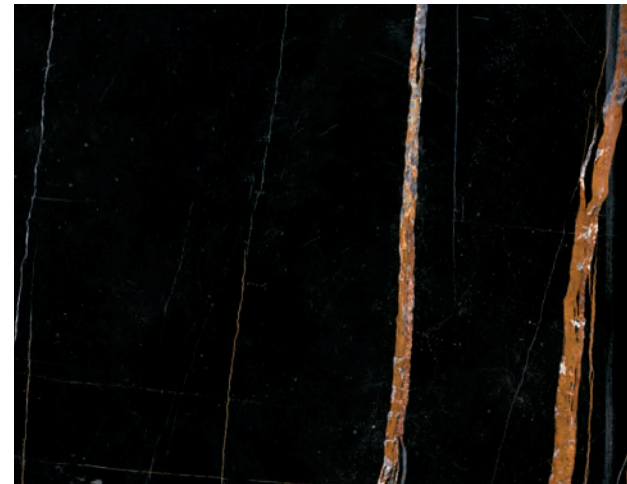
Calacatta Gold CG



Carrara White CW



Emperador Dark ED



Sahara Noir SN



Verde Alpi VA



Travertino TV

# WOODS COLLECTION



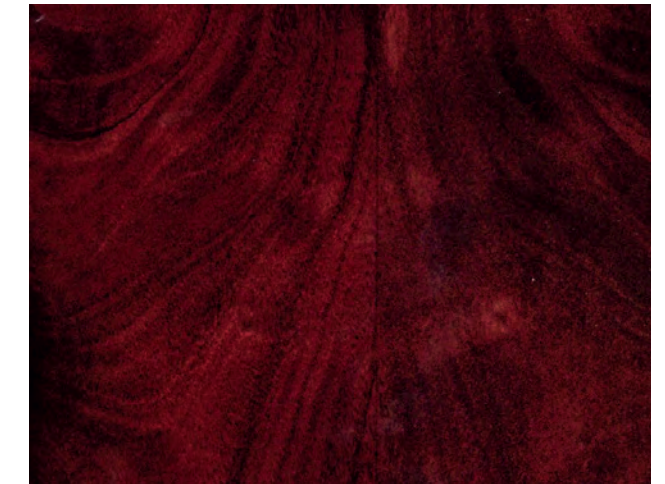
Natural Oak



Bolivar



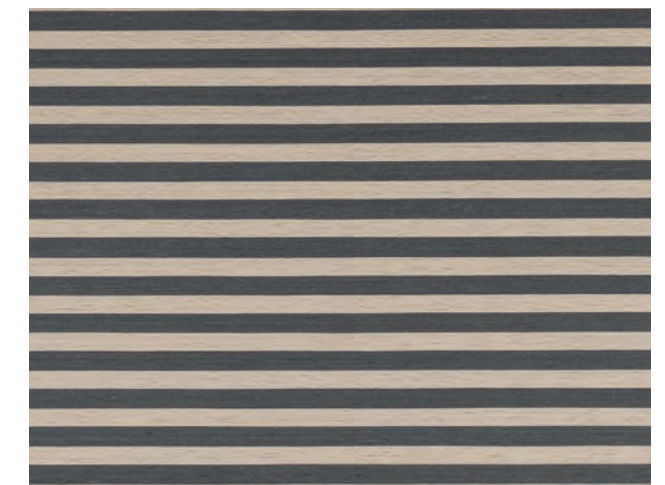
Canaletto Walnut



Mahogany

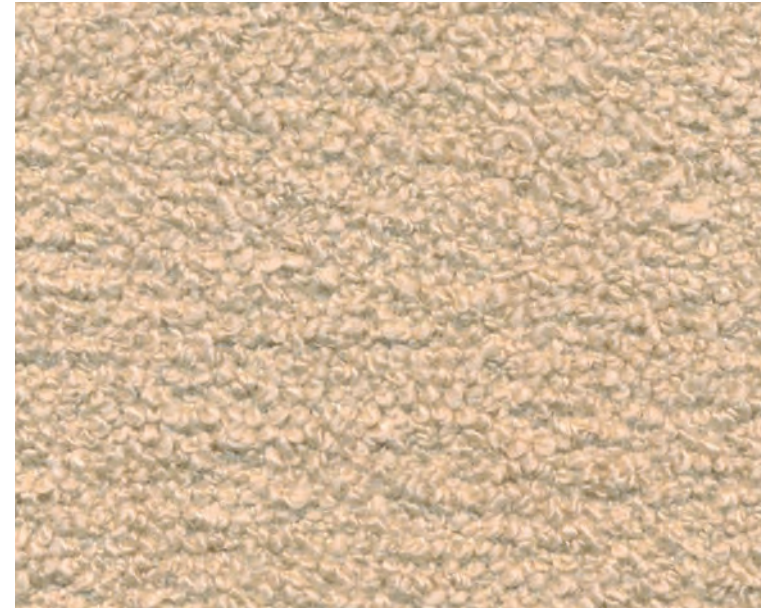


New Lime



Caleido

# CLUNIS



**Category**  
Bouclé

**Composition**  
33%WO-25%PL-25%PC-15%CO-2%PA  
Width: 137 cm +/- 3%  
Weight: 4935 gr/ml - 682 gr/sqm +/- 5%  
Martindale: 40000 cycles +/-

**Flame resistance**  
BS 5852-1 (1979) CIGARETTE  
BS 5852:2006 CIGARETTE  
BS 5852-1 (1979) MATCH  
BS 5852:2006 MATCH  
CAL TB 117:2013

**Washing Instructions**



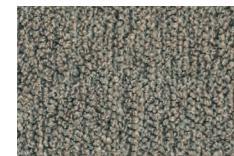
002



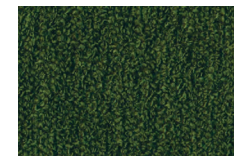
002



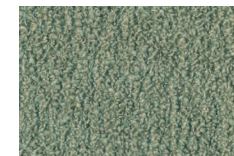
006



028



026



000



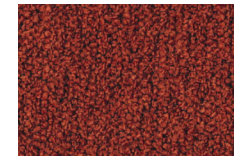
029



030



020



025

# SOFI



**Category**  
Cotton and viscose frisé

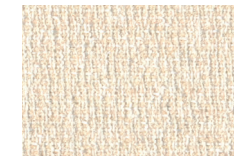
**Composition**  
46%CO-47%VI-7%LI  
Width: 850 gr/ml - 607 gr/sqm +/- 5%  
Weight: 850 gr/ml - 607 gr/sqm +/- 5%  
Martindale: 27000 cycles +/- 10%

**Flame resistance**  
BS 5852:2006 CIGARETTE  
BS 5852-1 (1979) MATCH  
BS 5852:2006 MATCH

**Washing Instructions**



187101



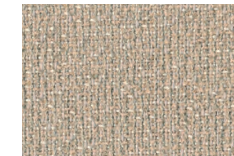
187-101



187-000



187-100



187-029

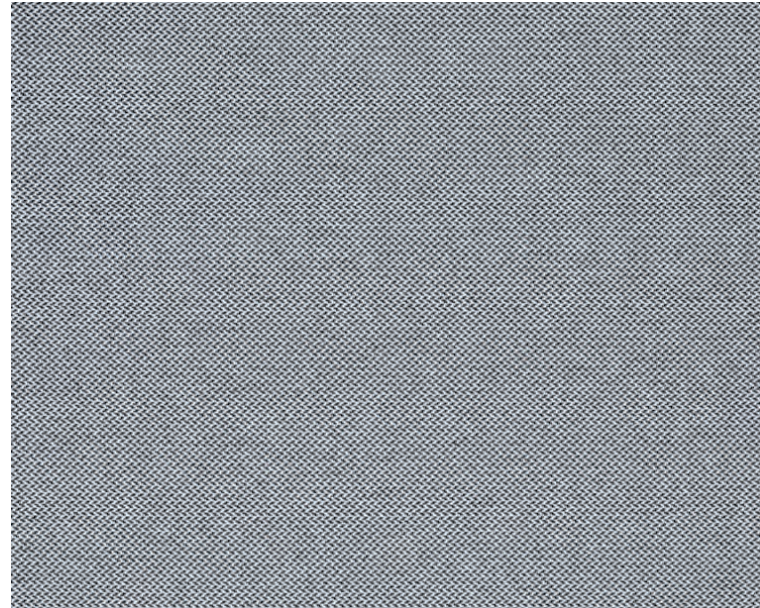


187-090



187-062

# REVIVE



**Category**  
Kvadrat upholstery

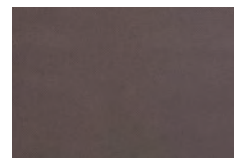
**Composition**  
100% recycled polyester FR  
Width: Approx. 140 cm (Approx. 55")  
Weight: 420 g/lin. m (13.55 oz/ly)  
Martindale: 60.000  
Sustainability: Greenguard Gold, HPD, EPD

**Flame resistance**  
BS 5852 Crib 5 with treatment, EN 1021-1/2, DIN 4102 B1, IMO FTP Code 2010: Part 8, NF D 60 013 with treatment, Önorm B1/Q1, UNI 9175 1IM, US Cal. Bull. 117-2013

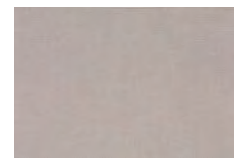
0154



0154



0274



0324



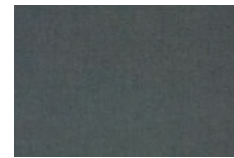
0434



0454

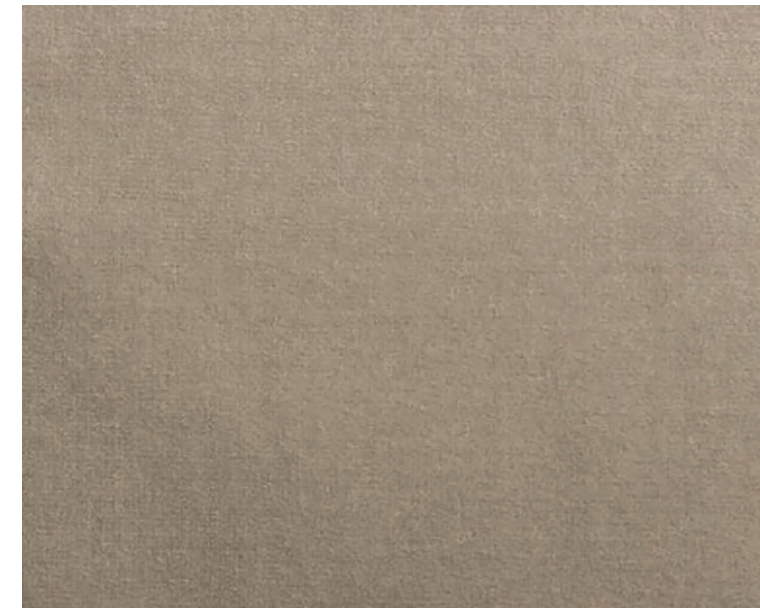


0944



0974

# ADAMO & EVA



**Category**  
Cotton Velvet

**Composition**  
100%CO  
Weight: g/ml 630  
Width: cm 140 – 55.12 inches  
Cfa: Yes  
Martindale: 50.000

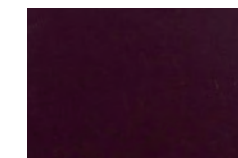
**Washing Instructions**



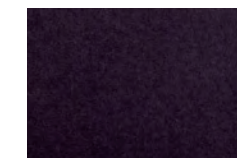
129 - roccia



116 - cayenne



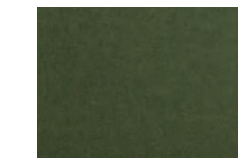
119 - prugna



106 - mirtillo



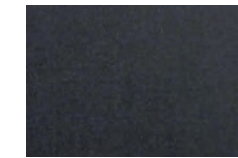
168 - mousse



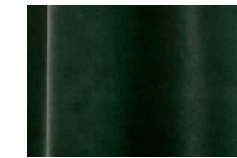
145 - olive



129 - roccia



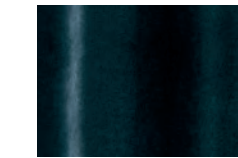
107 - antracite



169 - cactus



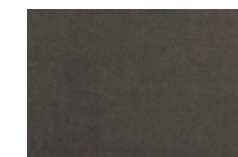
104 - indigo



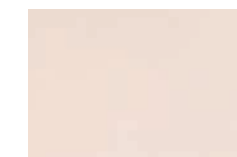
170 - notte



175 - fumo



137 - cenere



178 - ostrica

An exquisite quality of Italian-made cotton velvet that is soft, versatile and hard-wearing. A palette of 13 colours comprising striking, traditional and neutral shades.

# TABULARASA

Only for Love chair

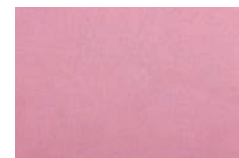


**Category**  
Cotton Satin

**Composition**  
100%CO  
Weight: g/ml 469  
Width: cm 140 – 55.12 inches  
Cfa: Yes  
Martindale: 30.000

**Washing Instructions**

161 - malachite



103 - ninfea



161 - malachite



156 - ottanio



rose - 173

# BOGARDINE

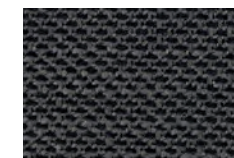


**Category**  
Jacquard

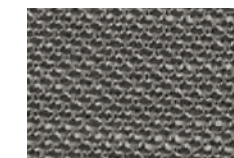
**Composition**  
31%CV 26%CO 24%PAN 10%LI 8%WO 1%PA  
Weight: g/ml 960  
Width: cm 140 – 55.12 inches  
Curtain, Upholstery For Medium/Hard Use  
Cfa: Yes  
Martindale: 40.000

**Washing Instructions**

003 - perla



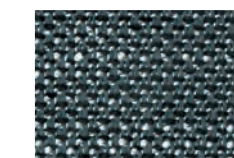
001 - quasinero



002 - taupe



003 - perla



008 - ottanio

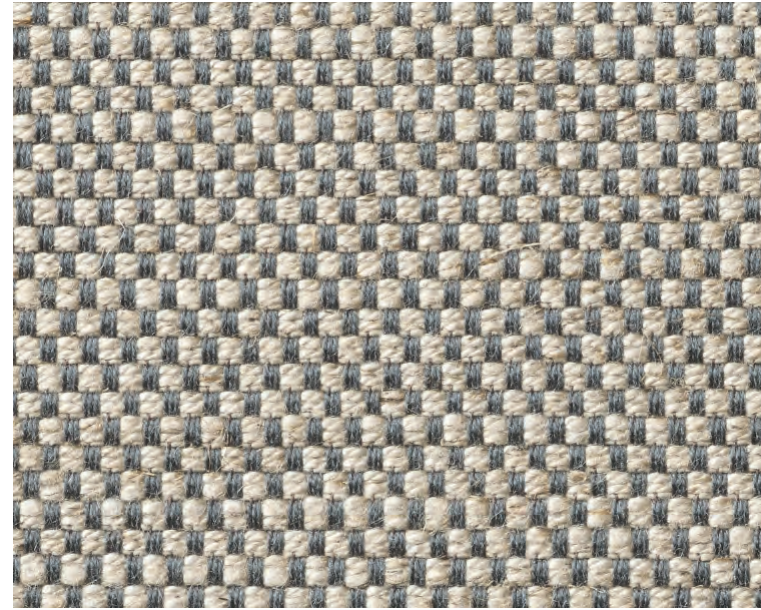


009 - bianco

An elegantly modern cotton satin whose sheen enhances an extraordinary colour palette. Versatile and hardwearing, it provides the basis for infinite possibilities of fabric coordination, also using the Babà trimmings collection.

Yarns of different types and thicknesses create a textural weave and confer a slight matelassé effect to the surface. Soft and consistent to the hand, hardwearing and ideal for heavy duty seating.

# SINEQUANON

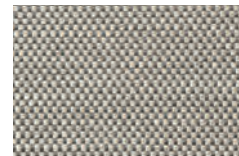


**Category**  
Linen and Viscose fabric

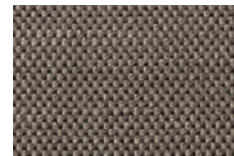
**Composition**  
60%CV 16%LI 13%CO 6%PES 5%PAN  
Weight: g/ml 663  
Width: cm 140 – 55.12 inches  
Cfa: Yes  
Martindale: 35.000

**Washing Instructions**

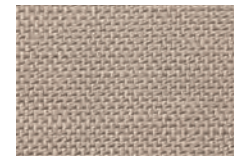
01 - argento



01 - argento



02 - taupe



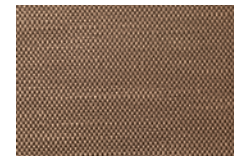
05 - stone



25 - cappuccino



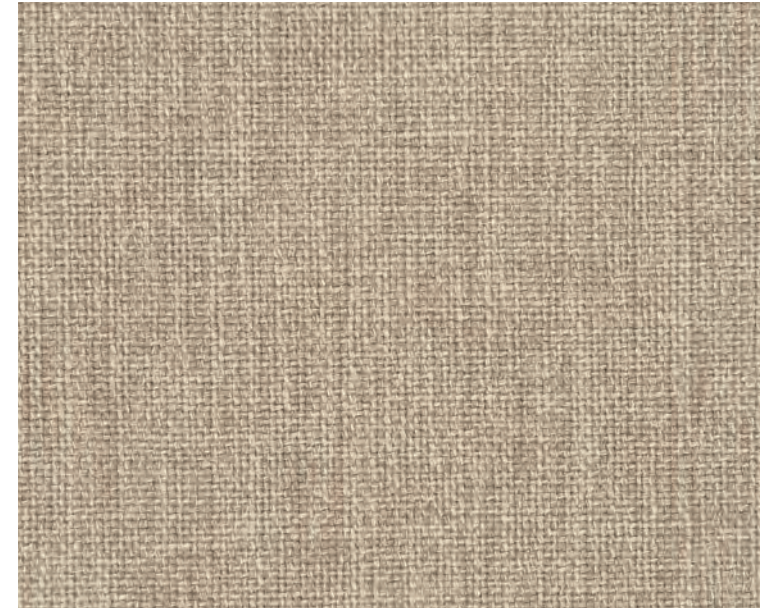
07 - perla



37 - caffè arabica

Panama weave with slightly shot yarns. Even here the Dedar offer extends with the linen and viscose cloth, which is durable, bright, boasts a rich texture (Flair, Fifty Fifty, Chambray, Aut Aut, Arbus). A special, careful blend of linen and viscose and a new construction which enables a reduction of the textile weight whilst guaranteeing the aesthetic quality, usage and durability, and also offering good value. This textile, just like the others in this range, feature a waterrepellent treatment which offers specific protection from liquids and oils.

# CLAY

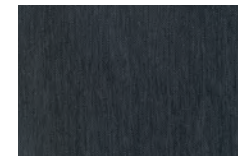


**Category**  
Upholstery

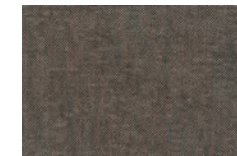
**Composition**  
76% Linen, 21% Cotton, 3% Polyester  
Pattern: Solid  
Weight: 770 g/lin.m  
Width: 140 cm  
Durability: 45.000 Martindale  
Pilling: 4  
Lightfastness: 5

**Washing Instructions**

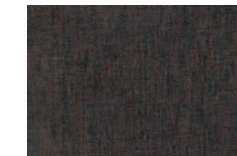
0010



002



004



005



009



0010



0013

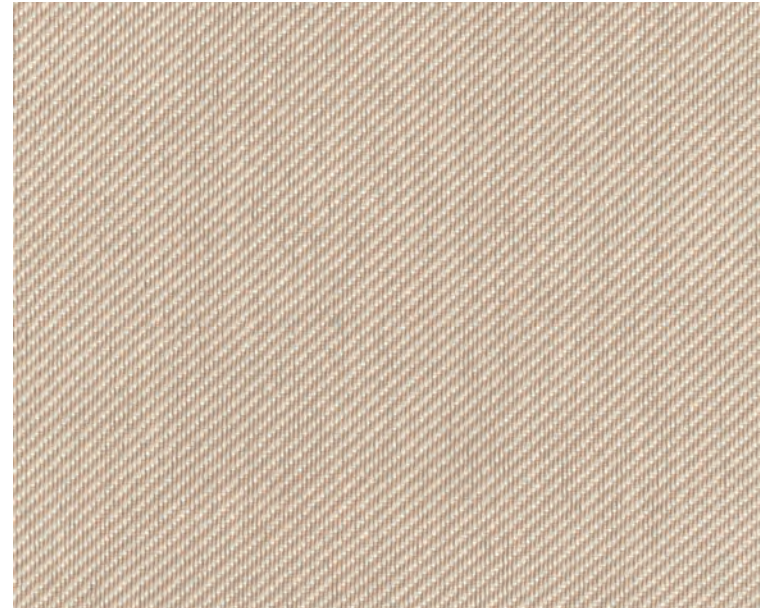


0015

Bringing together both natural beauty and a sense of finesse, the creative team have mixed colours of yarn in warp and weft to create an elegant yet casual fabric. The result has a unique structured surface that adds and extra dimension to any interior design scheme. With a back cloth that gives extra stability, Clay is perfect for upholstering furniture.

The colours are inspired by the designer's love of both art and interiors and include cool shades of cement, blue, and salvia but also the natural shades of wood and clay.

# TWILLTWENTY



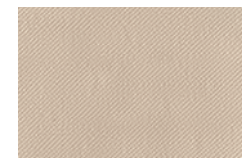
**Category**  
Twill

**Composition**  
100%PI Flame Retardant  
Width: 140 Cm  
Weight: 630 Gr  
Made in: Italy  
Martindale: 80000  
Pilling: 4/5 (Scale 1-5)  
Colour Fastness To Light: 7 (Scale 1-8)  
Colour Fastness To Crocking: 4/5 Dry 4/5 Wet (Scale 1-5)  
Colour Fastness To Chlorinated Water: 4/5 (Scale 1-5)  
Colour Fastness To Sea Water: 4/5 (Scale 1-5)  
Tensile Strength: Class A (En 14465)  
Tear Strength: Class A (En 14465)  
Seam Slippage: Class A (En 14465)  
Other Certifications: Yarns Certified Oeko-Tex  
Fire Certifications: France M1 Nfp902-503-504-505,  
Germany B1 Din 4102-1, Imo 8 Upholstery, Italia Classe  
1 Tendaggi, Uk Cigarette Source 0, Uk Contract Curtains  
Bs5867, Uk Contract Upholstery Bs7176, U.s.a. Cal Tb117

**Washing Instructions**



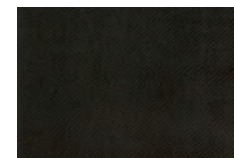
4 - cipria



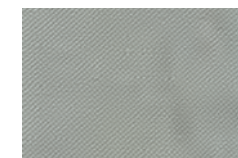
4 - cipria



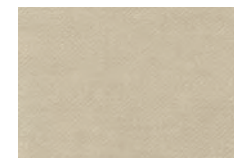
20 - ruggine



7 - nero



6 - grigio



3 - corda



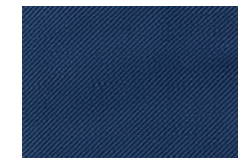
1 - bianco



9 - pesco



12 - pervinca



17 - blue



19 - bordeaux



13 - acqua



16 - teal blue

# SAFIRE



**Category**  
Boucle and chenille

**Composition**  
43% Viscose, 17% Acrylic, 15% New wool, 9% Cotton, 8%  
Linen, 8% Polyester  
Weight: 1010 g/lin.m  
Width: 140 cm  
Durability: 44 000 Martindale  
Pilling: 3  
Lightfastness: 6  
Sustainability: Greenguard Certification

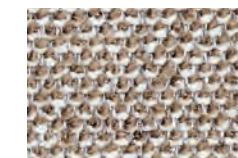
**Washing Instructions**



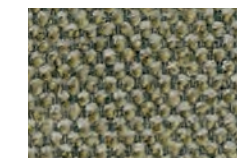
003



003



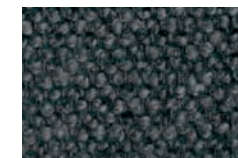
004



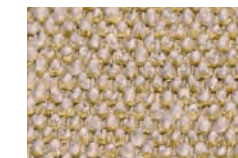
005



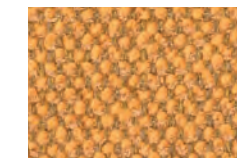
008



010



015

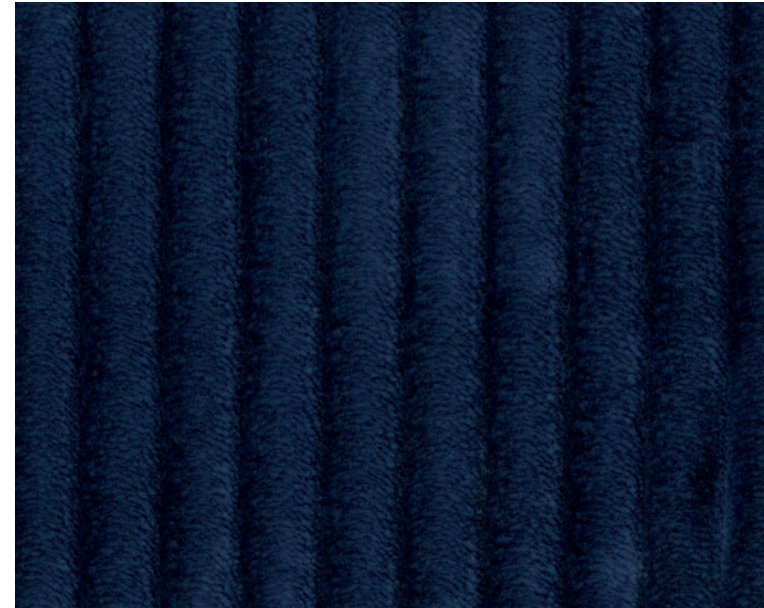


017

A classic twill. A particularly thick thread/yarn highlights the "Z" diagonal motif which makes the fabric more dynamic. The shiny and matt threads enhance the effect of the light on the surface.



# CORD



**Category**  
Cotton Velvet

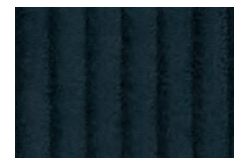
**Composition**  
100% cotton, groundmaterial: 100% cotton  
Width: 140 cm  
Durability: 100 000 Martindale

**Washing Instructions**  


CA1419/053



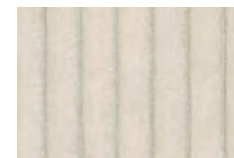
CA1419/053



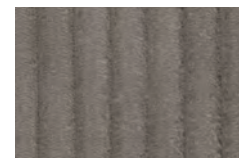
CA1419/084



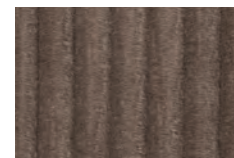
CA1419/070



CA1419/071



CA1419/091



CA1419/020



CA1419/032



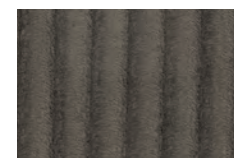
CA1419/064



CA1419/051



CA1419/037



CA1419/093



CA1419/081

# BONSAI




**Category**  
Upholstery

**Composition**  
48% PAN 29% CO 23% PES  
Weight: 140 cm  
Width: 905 per linear meter/g  
Width: 646 per square meter/g  
Durability: 50 000 Martindale  
Seam slippage: <6mm  
Pilling (DIN EN ISO 12945-2)  
Rub fastness: Dry 4-5 Wet 4-5  
Lightfastness: for medium colours 5

**Flame retardant**  
BS 5852: Part 1: 1979  
Ignition source 0 (Cigarette)

**Fabric**  
Wave Dobby

**Washing Instructions**  


020



020



021



093



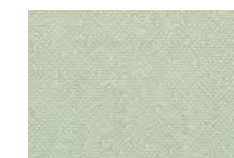
072



041



032



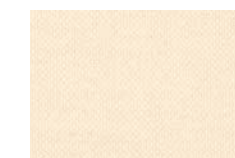
082



051



050



070

# TIVANO



**Category**  
European cattle

**Composition**  
Raw material: European cattle  
Tanning: Mineral  
Protection: Semianiline  
Description: Waxed hand buffed  
Thickness: 1,2 - 1,4 mm  
Average size: 5,0 m<sup>2</sup>

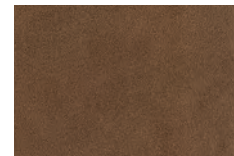
Dry finishing locking	EN ISO 11644	≥ n.a. N/cm
Tear resistance	EN ISO 3377-1	≥ 20 N/cm
Flexing endurance	EN ISO 5402	≥ 20.000 runs
Dry rub colour fastness	EN ISO 11640	150 runs ≥ 4 grey scale
Wet rub colour fastness	EN ISO 11640	25 runs ≥ 4 grey scale
Light fastness	EN ISO 105-B	≥ 4 blue scale
Heat colour fastness	EN ISO 17228	≥ 4 grey scale

Avoid exposure to direct sunlight and heat sources  
Clean frequently and gently with a soft cloth  
Remove stains with a damp cloth or with a specific cleaning product

3611 - corda



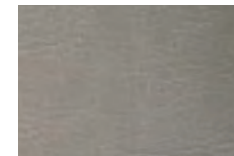
3611 - corda



3606 - tabacco



3603 - militare



3612 - fumo

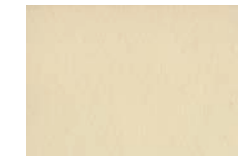
# CUOIO LEATHER

Only for Frame sofa and armchair

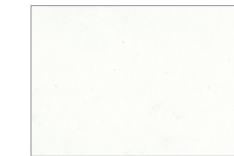


**Composition**  
Bovine of European origin in Nabuk finishing, natural grain.  
Average thickness 1.8/2.0 mm. Chrome tannage. Aniline dyed with pigmented finish  
The possible presence of any imperfections testify the authenticity and the natural look of pure cuoio leather.

naturale



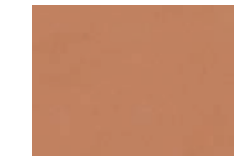
avorio



bianco



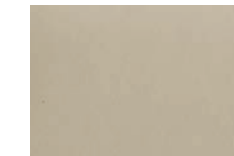
grigio



naturale



nero



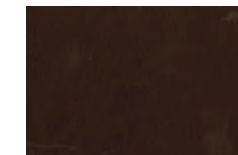
nocciola



rosso bulgaro



sabbia



tabacco



testa di moro



tortora



verde fango

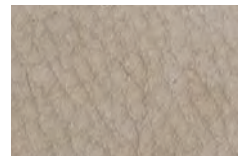
# KAIROS COLLECTION



**Category**  
Nabuck leather

**Composition**  
Bovine of European origin in Nabuk finishing, natural grain.  
The average size of each skin is around 5.0 sqm.  
Chrome tannage.  
Aniline dyed, finished with high quality oils. Suede look, soft and velvet touch.  
The possible presence of any imperfections testify the authenticity and the natural look of pure aniline leather.  
Average thickness 1,2 - 1,4 mm.

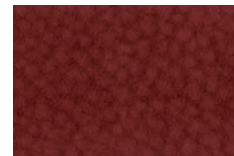
1716 - doeskin



1719 - kangaroo



1716 - doeskin



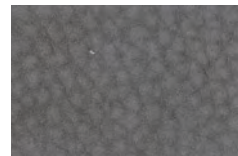
1714 - lucky



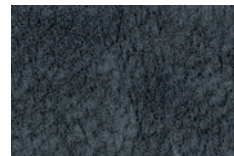
1704 - chocolate forest



1701 - caqui



1711 - cenere



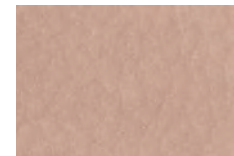
1721 - ematite



1715 - elephant



1710 - plomo



1718 - nude

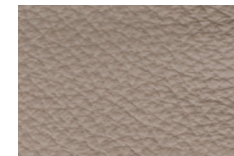
# LINEA COLLECTION



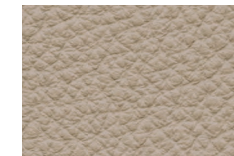
**Category**  
High quality bovine leather with lightly buffed natural grain

**Composition**  
Bovine of European origin, lightly buffed natural grain, finished thickness 0.9 - 1.1 mm.  
The average size of each hide is around 4.8 - 5.0 sqm.  
Chrome tannage.  
Through dyed; finishing with resins and pigments. Article with a pigmented and protective coat, with a soft, waxy feel and semi-matt appearance.

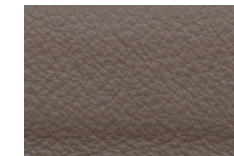
647 - grigio perla



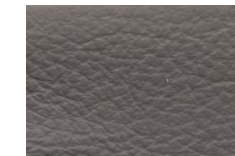
629 - stone



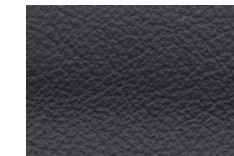
647 - grigio perla



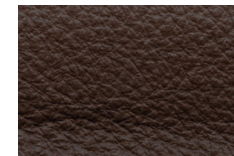
677 - malt



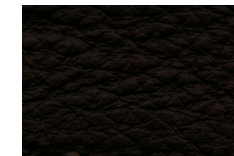
660 - asfalto



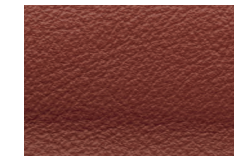
675 - new grey



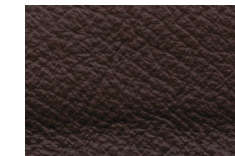
612 - castagna



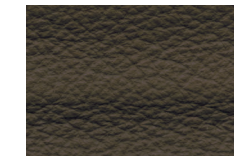
611 - testa moro



656 - cotto



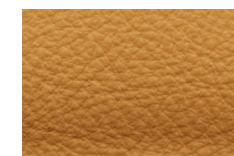
610 - mogano



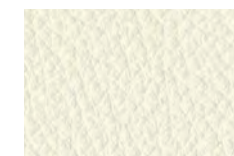
632 - verdone



622 - nero



619 - giallino



634 - gesso



674 - octane

# AIDA COLLECTION



**Category**

Nappa Smooth leather

**Composition**

Average size 4.5-4.8 sqm, thickness 0.9-1.1 mm.

Chrome tannage.

Bovine leather with smooth aspect, aniline finished with some oils and waxes, produced on European bull.

Aniline dyed, finished with high quality oils. Soft article with a slight two tones effect, emotional touch.

The possible presence of any imperfections and color variations are typical for this type of leather as they testify the authenticity and the natural look of pure aniline leather.

Daino



Daino



Coffee



Tan



Saddle



Blackberry



Spruce



Nocturne



Mud



Grey



Sand

## TECHNICAL SPECIFICATONS & GENERAL INDEX

# LEISURE

Seating System

## Structure

Back and seat cushions in polyurethane rubber by mould of different densities with internal metal support

## Cushions

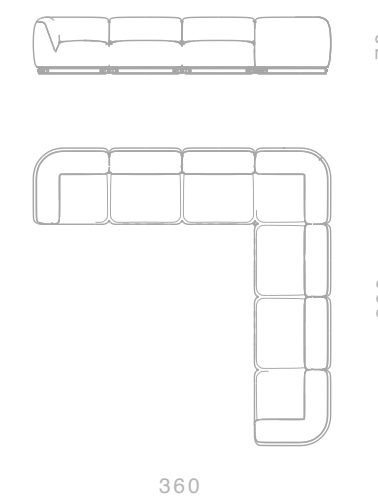
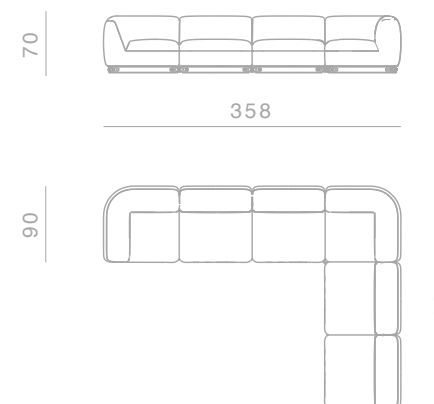
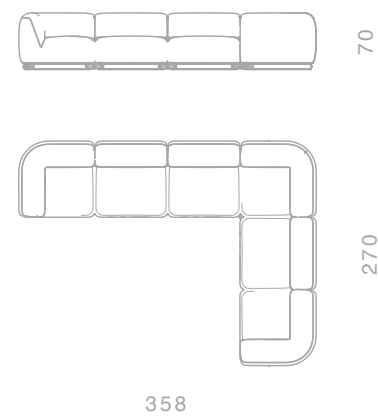
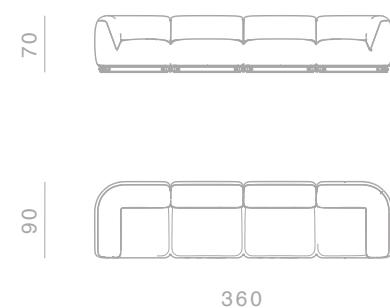
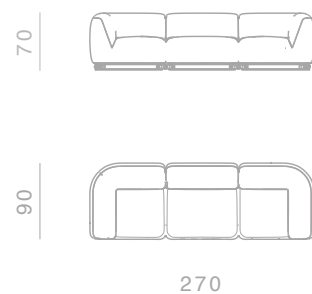
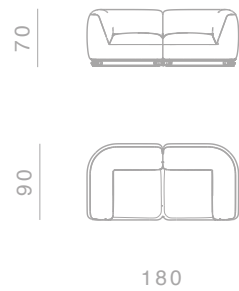
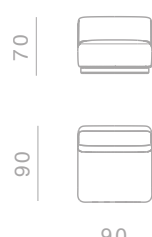
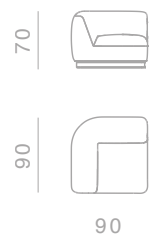
Rubber by mould of different densities with a quilted goose down in cotton light

## Covers

Covers are not removable

## Base

Hooking system in brass die casted in-house in Ghidini1961 and natural leather



# BRIDGE

Seating System

## Structure

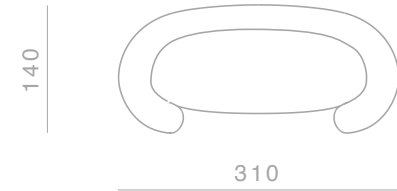
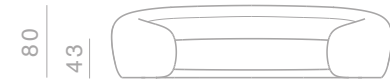
Polyurethane rubber by mould of different densities with internal metal support.

## Cushions

Back cushions in polyurethane rubber by mould of different densities.  
Seat cushions in polyurethane rubber of different densities.

## Covers

Covers are not removable



# SHAKER

Seating System

## Structure

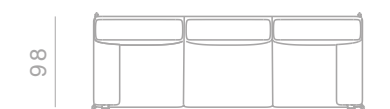
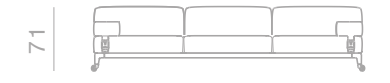
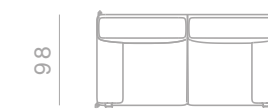
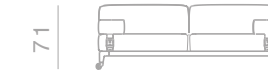
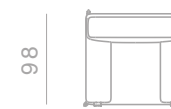
Base in painted and strapped metal. Backrest in rubber in different densities.

## Cushions

Back and seat cushions in polyurethane rubber of different densities. Lateral cushions are blocked with natural leather belt with brass buckle.

## Base

Shaker sofa is based on aluminum structure die casted in-house at Ghidini1961.



# ELEPHANT

Seating System

## Structure

Polyurethane rubber by mould of different densities with internal metal support.

## Cushions

Back cushions in polyurethane rubber by mould of different densities.  
Seat cushions in polyurethane rubber of different densities.

## Covers

Covers are not removable



300



125

# OPERA

Seating System

## Structure

Base in plywood panel and polyurethane rubber of different densities

## Cushions

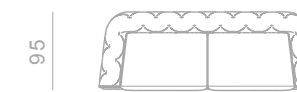
Perimetral cushions in high grammage on wood structure.  
Seat cushions in polyurethane rubber of different densities.  
Back cushions covered with a quilted goose down in cotton light

## Covers

Seat and back cushions cover are removable for both fabric and leather versions

## Base

The Opera sofa and armchair are based on aluminium structure composed by round profile and feet die casted in house at Ghidini1961



263



116

# TARANTINO

Seating System

## Structure

Aluminum legs fixed on internal metal frame, aluminum side support

## Cushions

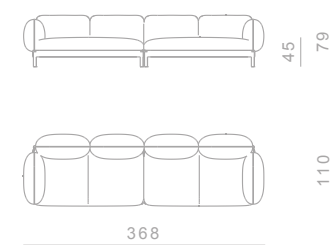
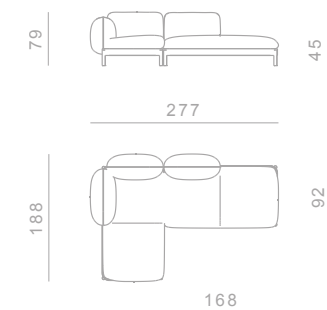
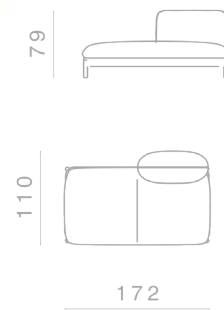
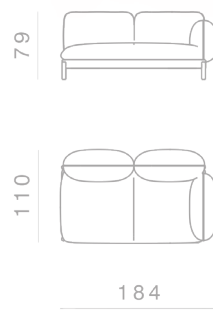
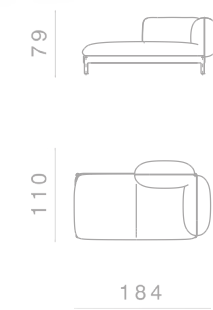
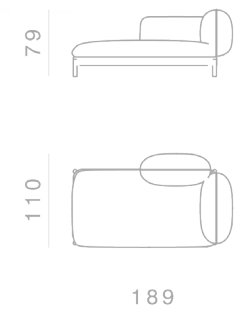
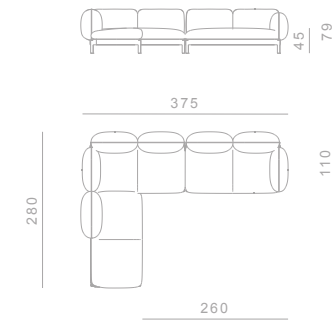
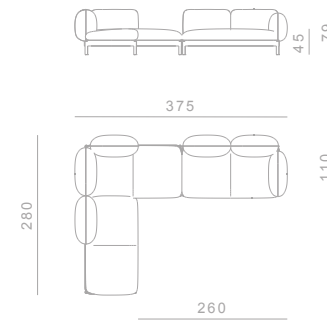
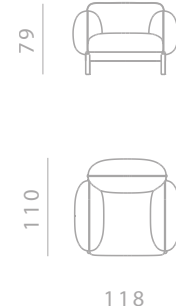
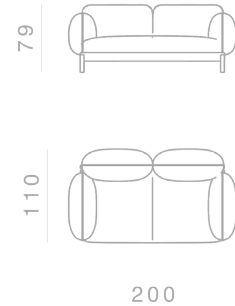
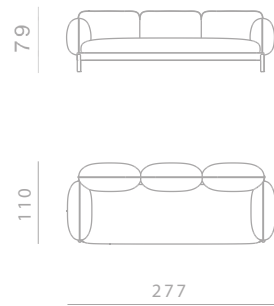
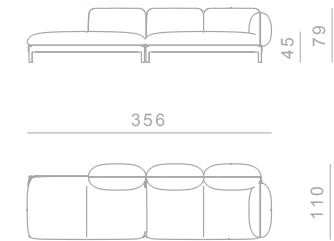
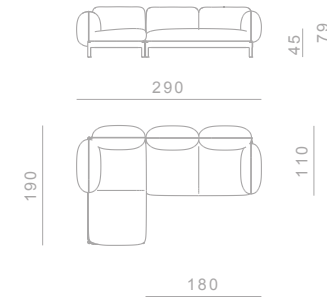
Back cushions in high grammage wadding with internal rubber insert, covered with a quilted goose down in cotton lining. Seat cushions in polyurethane rubber of different densities covered with a quilted goose down in cotton lining

## Covers

Covers are not removable

## Base

The sofa, armchair and ottoman are made of Italian aluminum, bent in-house at Ghidini1961. Polished manually, and lacquered with a transparent finish to guarantee a long lasting durability





# MILO

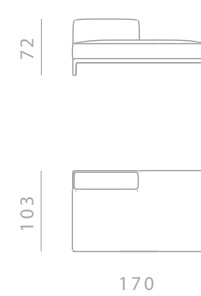
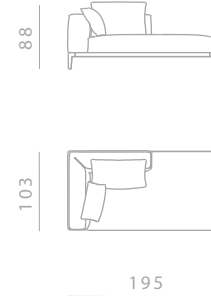
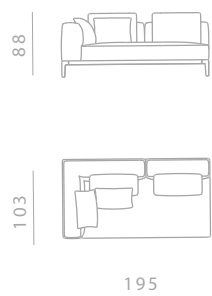
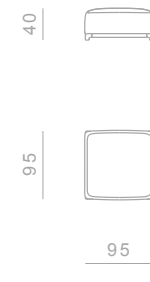
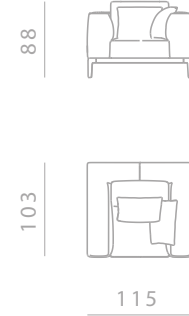
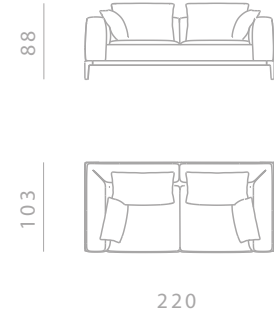
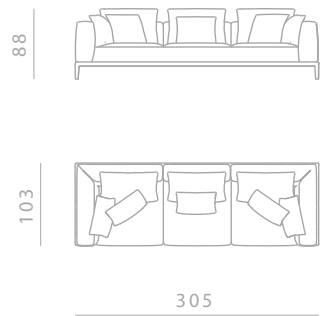
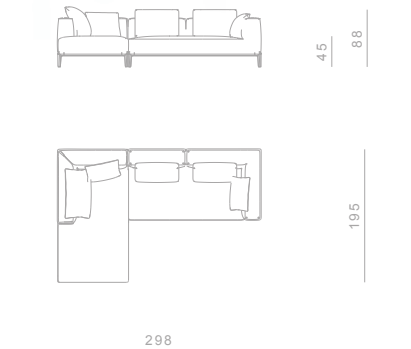
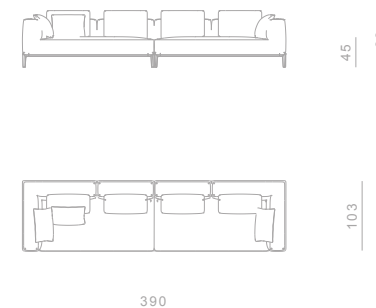
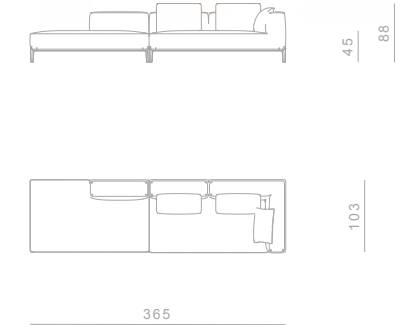
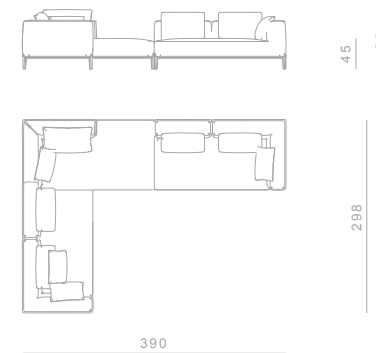
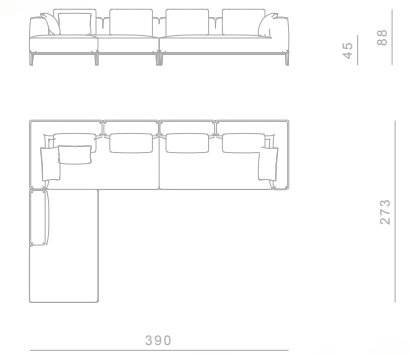
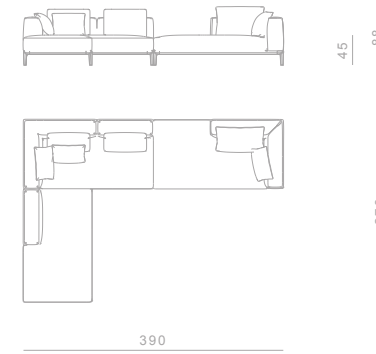
Seating System

**Structure**  
Base in painted strapped metal and plywood panel

**Cushions**  
Perimetral cushions in high grammage on wood structure. Seat cushions in polyurethane rubber of different densities. Back and lateral cushions covered with a quilted goose down in cotton light

**Covers**  
Seat and back cushions cover are removable

**Base**  
All products from Milo family are based on aluminium structure with die casted legs in-house Ghidini1961



# FRAME

## Seating System

### Structure

Base in painted and strapped metal. Backrest in rubber in different densities with plywood panel

### Cushions

Back cushions in high grammage wadding with internal rubber insert.  
Seat cushions in polyurethane rubber of different densities. Side and back sides in natural cuoio leather

### Covers

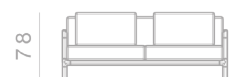
All covers are completely removable for both fabric and leather versions

### Base

The sofa and armchair is based on the Frame family of castings. The frame castings are made of Italian aluminium, die casted in-house at Ghidini1961.



280



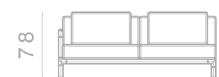
190



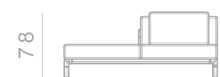
90



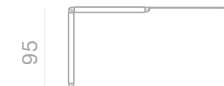
95



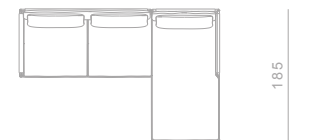
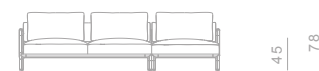
185



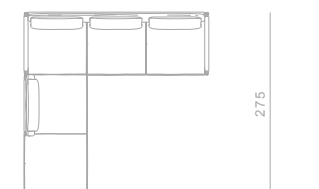
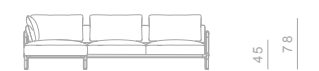
180



185



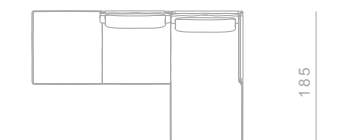
280



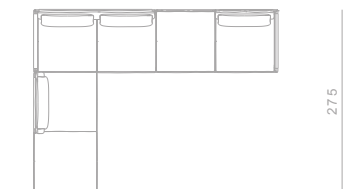
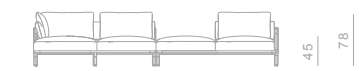
280



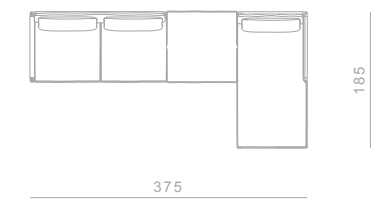
375



275



370



375

# BOLD

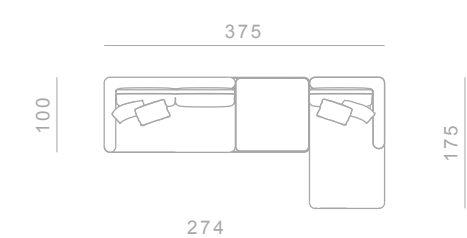
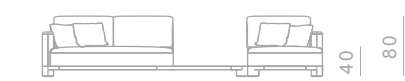
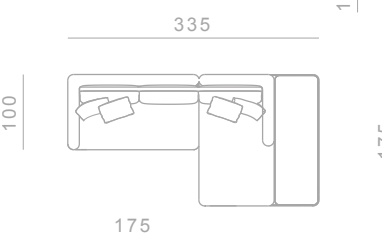
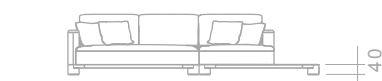
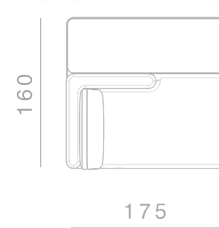
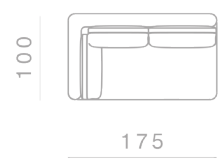
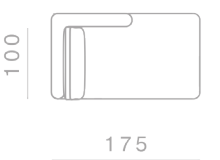
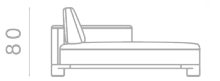
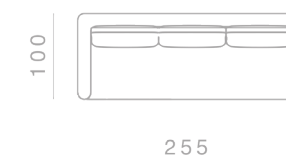
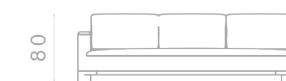
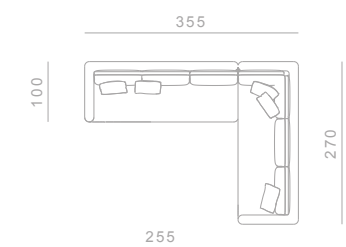
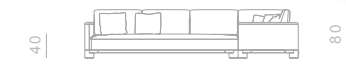
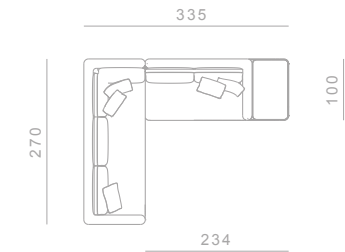
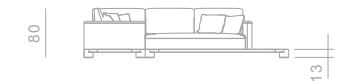
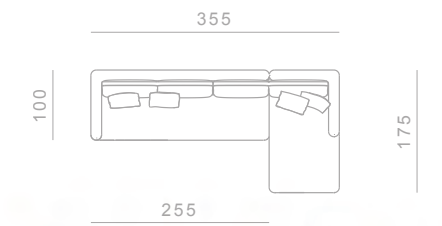
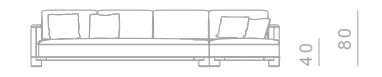
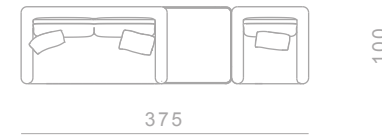
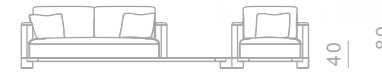
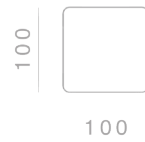
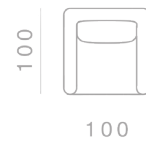
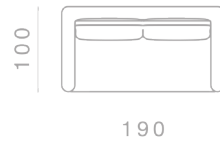
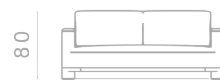
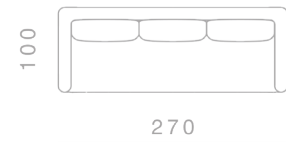
Seating System

**Structure**  
Die casted aluminum on the angular elements and extruded aluminum for the supporting structure on the perimeter. Internal structure in wood with metal supporting frame

**Cushions**  
Back cushions in high grammage wadding with internal rubber insert. Seat cushions in polyurethane rubber of different densities

**Covers**  
Back covers are completely removable for both fabric and leather versions

**Base**  
The sofa, armchair and ottoman are based on the Bold family of castings. The Bold castings are made of Italian aluminum, die casted in-house at Ghidini1961. Polished manually, and lacquered with a transparent finish to guarantee a long lasting durability



# ABBRACCI

Seating System

## Structure

Base structure in brass plated aluminum bended round tube. Internal structure with metal supporting frame

## Cushions

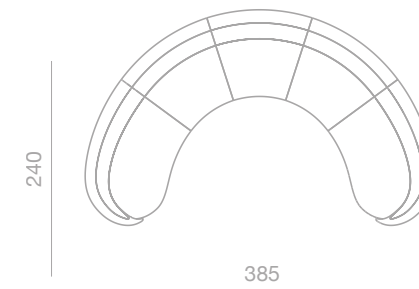
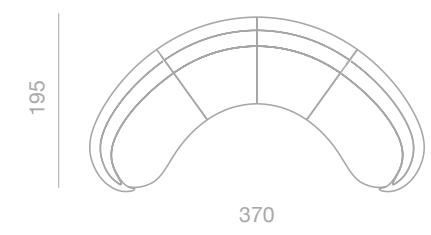
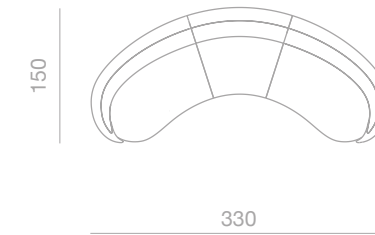
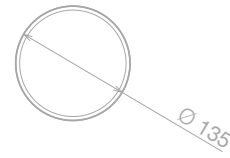
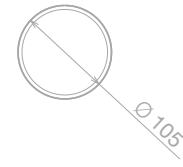
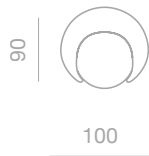
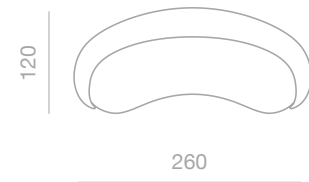
Back cushions in high grammage wadding with internal rubber insert. Seat cushions in polyurethane rubber of different densities

## Covers

Covers are not removable

## Base

The sofa, armchair and ottoman are made of Italian aluminum, bent in-house at Ghidini1961. Polished manually, and lacquered with a transparent finish to guarantee a long lasting durability



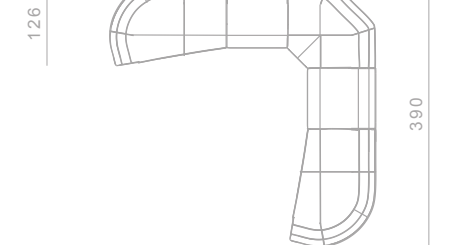
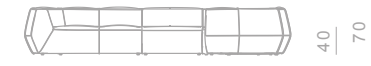
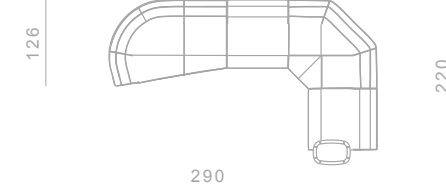
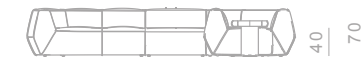
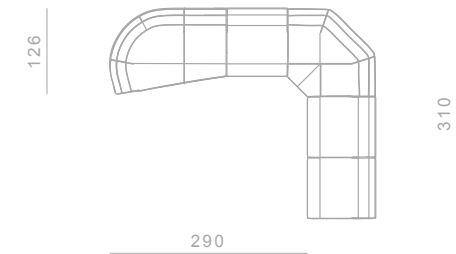
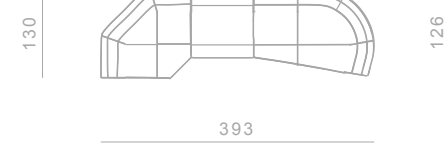
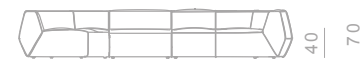
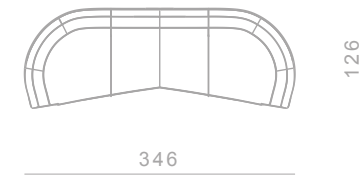
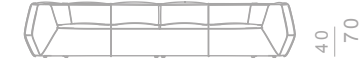
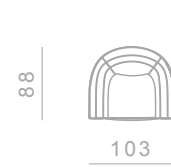
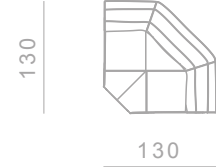
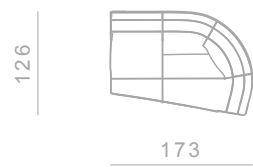
# INFINITO

Seating System

**Structure**  
Base in plywood panel and polyurethane rubber of different densities

**Cushions**  
Perimetral cushions in high grammage on wood structure. Seat cushions in polyurethane rubber of different densities. Seat cushions covered with a quilted goose down in cotton light

**Covers**  
All products from Infinito family are covered by leather and are not removable



# DODO

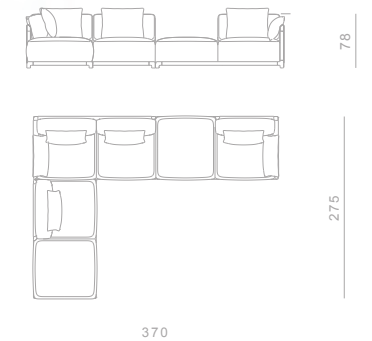
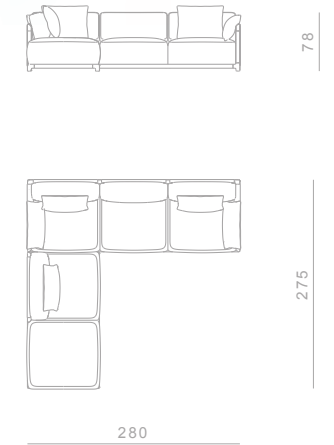
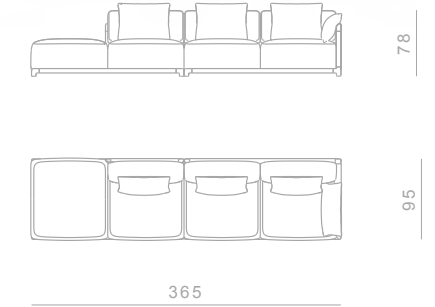
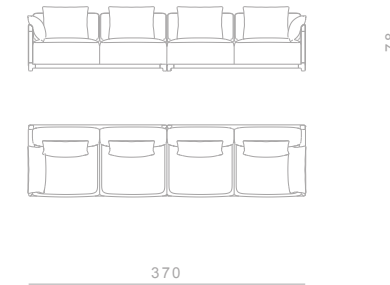
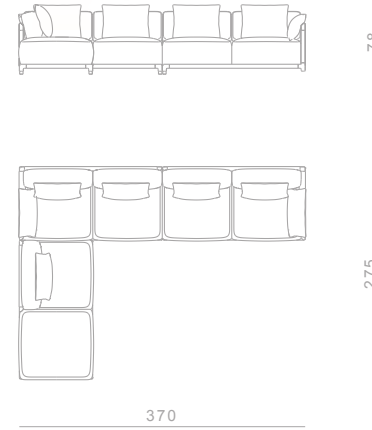
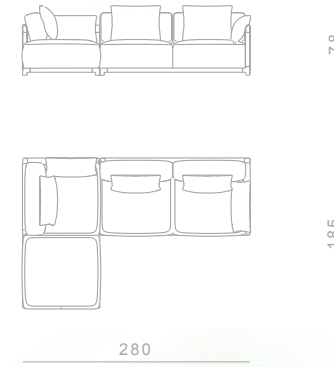
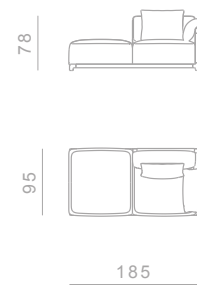
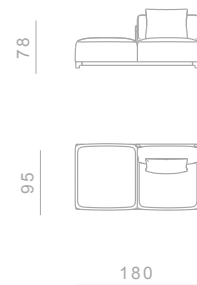
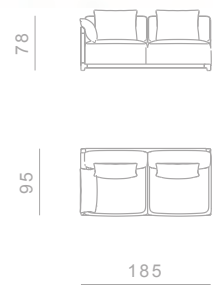
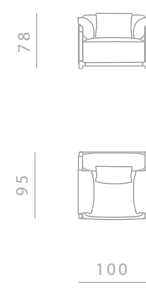
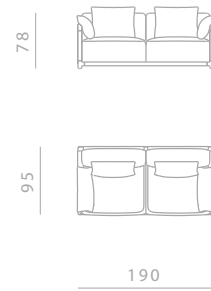
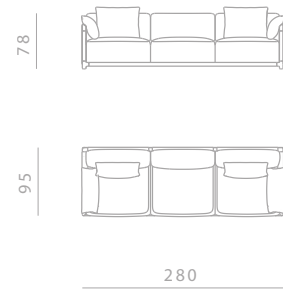
Seating System

**Structure**  
Base in painted strapped metal and plywood panel

**Cushions**  
Back cushions in high grammage wadding internal rubber insert. Seat cushions in polyurethane rubber of different densities. Side and back sides in natural cuoio leather covered. Back and lateral cushions covered with a quilted goose down in cotton light

**Covers**  
Seat and back cushions cover are removable

**Base**  
The sofa and armchair is based on the Dodo family of castings. The castings are made on Italian aluminium, die casted in house Ghidini1961



# KATANA

Seating System

## Structure

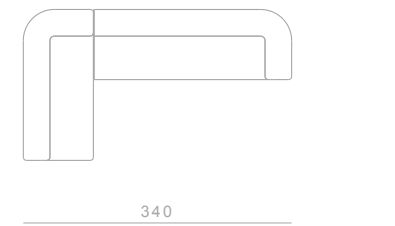
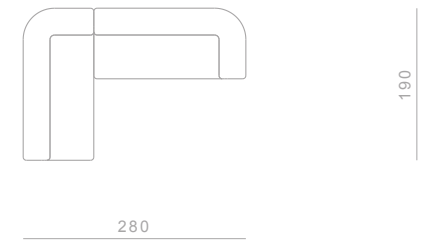
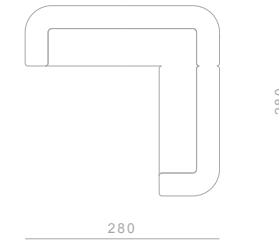
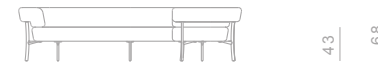
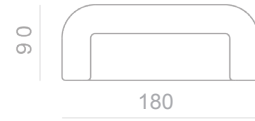
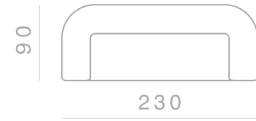
Belted seat and multilayered, covered in polyurethane foam at different densities covered with quilted goose down in cotton lining.  
Backrest structure made of plywood covered with polyurethane rubber of different densities, all covered with a quilted goose down in cotton lining

## Covers

The sofa covers are not removable

## Base

The sofa and armchair is based on the Katana leg.  
The Katana leg is made of Italian brass, die casted in-house at Ghidini1961. Polished manually, and lacquered with transparent finish to guarantee a longlasting durability



# PORTOFINO

Seating System

## Structure

Base in plywood panel and polyurethane rubber of different densities

## Cushions

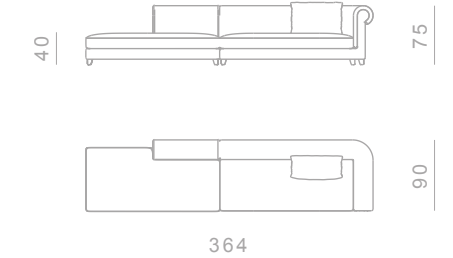
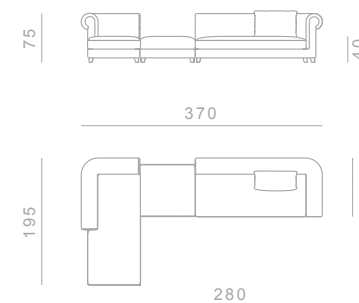
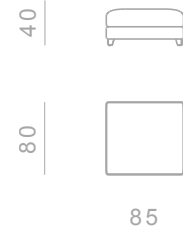
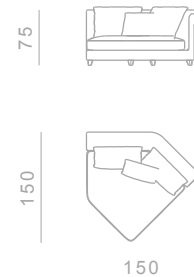
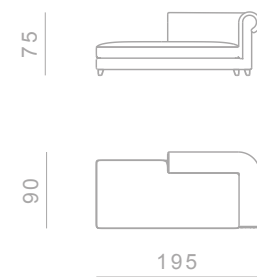
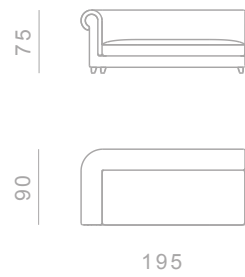
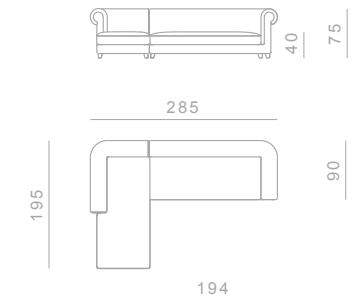
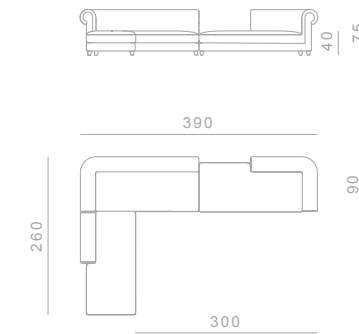
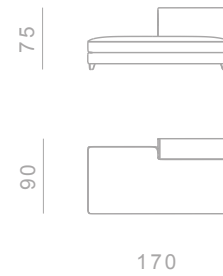
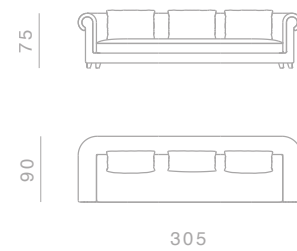
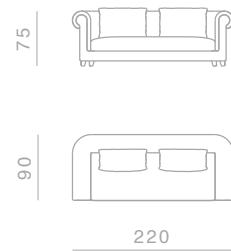
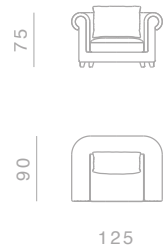
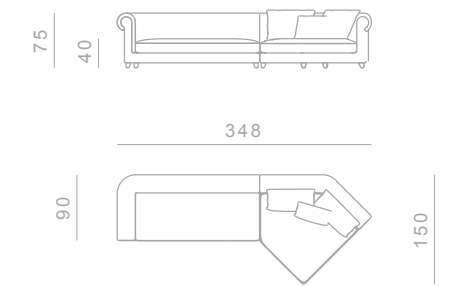
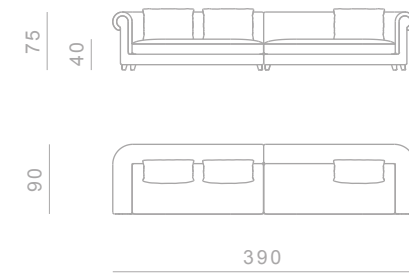
Perimetral cushions in high grammage on wood structure. Seat cushions in polyurethane rubber of different densities. Back cushions covered with a quilted goose down in cotton light

## Covers

Seat and back cushions cover are removable for both fabric and leather versions

## Base

All products from Portofino family are based on aluminium feet die casted in house at Ghidini1961





# SWEET

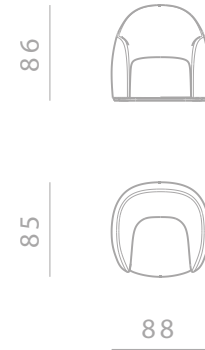
Seating System

**Structure**  
Base in plywood panel and polyurethane rubber of different densities

**Cushions**  
Cushions in polyurethane rubber by mould of different densities

**Covers**  
Covers are not removable

**Base**  
Sweet is based on aluminium ring cutted by water jet



# BUCKET

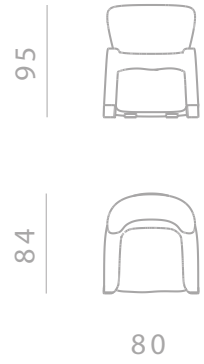
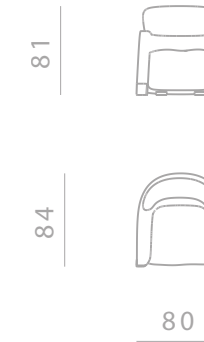
Seating System

**Structure**  
Base in plywood panel and polyurethane rubber of different densities

**Cushions**  
Seat cushion in polyurethane rubber covered with a quilted goose down in cotton light. Back cushion in polyurethane rubber by mould of different densities

**Covers**  
Covers are not removable

**Base**  
Bucket is based on aluminium feet die casted in house at Ghidini1961



# SIPARIO

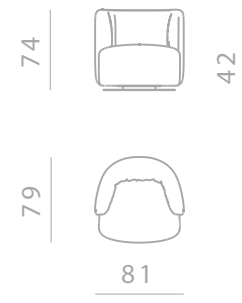
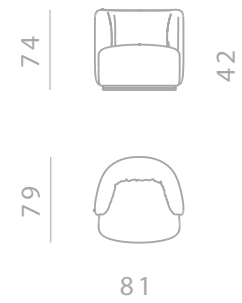
Seating System

**Structure**  
Base in plywood panel and polyurethane rubber of different densities

**Cushions**  
Cushions in polyurethane rubber by mould of different densities

**Covers**  
Covers are not removable

**Base**  
Sipario is based on aluminium ring cutted by water jet



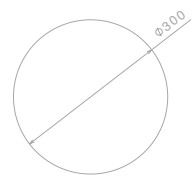
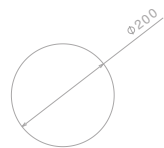
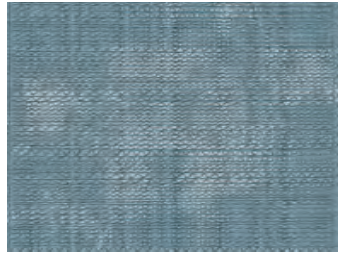
# TRIPLE WAVES

Rugs

**Material**  
New Zealand wool and Tencel

**Technique**  
Hand tufted  
The fleece can then be finished by hand to different thicknesses with the use of scissors.  
The fleece can be held as a “velvet” or a “loop” (small bouclé).

At the end of the weaving process, natural latex is poured on the back of the carpet, which gives greater compactness to the structure of the carpet.  
Finally, a cotton cloth is applied on the back as a finishing touch.



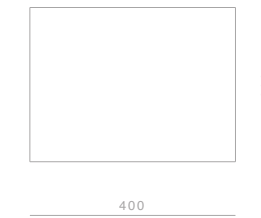
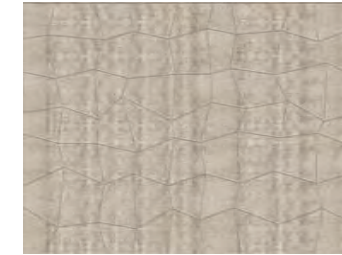
# CONNECT

Rugs

**Material**  
New Zealand wool and Tencel

**Technique**  
Hand tufted  
The fleece can then be finished by hand to different thicknesses with the use of scissors.  
The fleece can be held as a “velvet” or a “loop” (small bouclé).

At the end of the weaving process, natural latex is poured on the back of the carpet, which gives greater compactness to the structure of the carpet.  
Finally, a cotton cloth is applied on the back as a finishing touch.



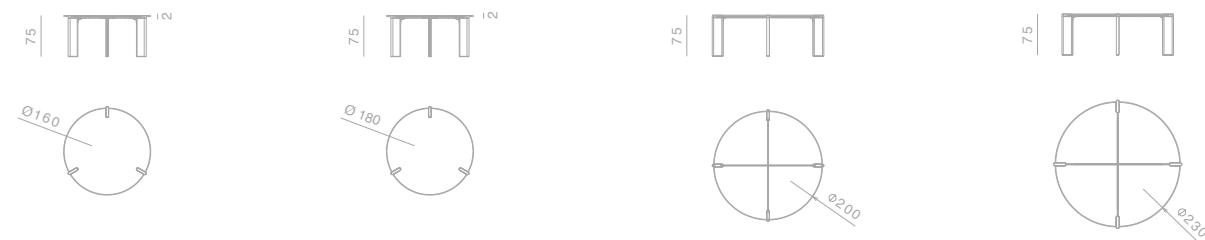
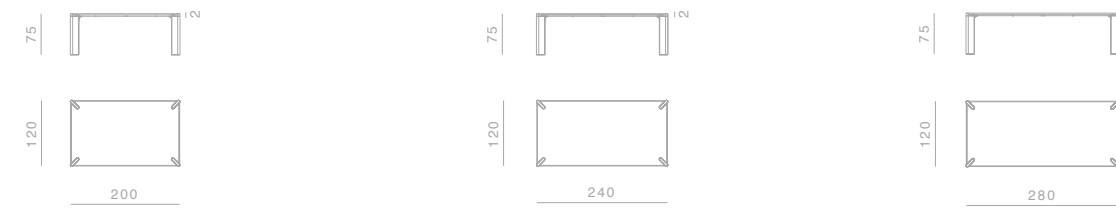
# OTTANTA

Tables

**Structure**  
Aluminum die casted elements on the top of each leg. Each element is die casted in house at Ghidini1961.

**Top Finishes**  
20mm marble, 20mm wood

**Legs**  
50mm marble, 50mm wood

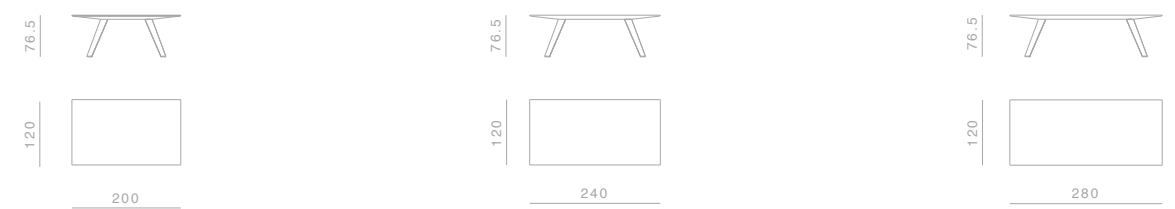


# LOCUST

Tables

**Top Finishes**  
75mm wood with slim edge profile

**Legs**  
Solid wood

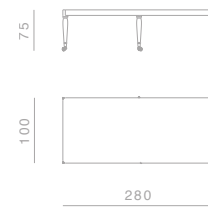
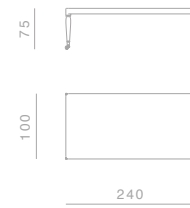
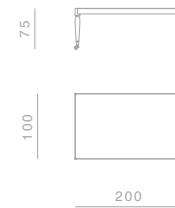


# SHAKER

Tables

**Top Finishes**  
100mm wood

**Legs**  
Turned wood with terminal wheel  
in brass machined in-house at  
Ghidini1961.



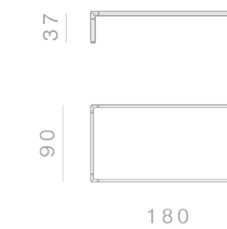
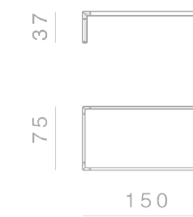
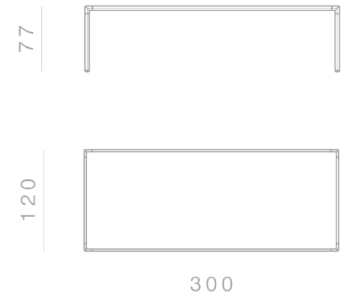
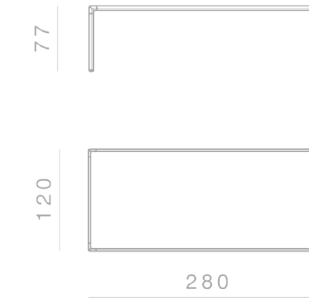
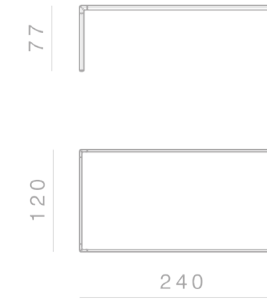
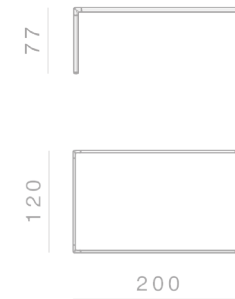
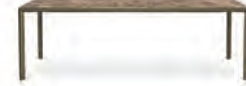
# FRAME

Tables

**Structure**  
Die casted aluminium on the  
angular elements and tubular  
aluminium for the supporting  
structure on the perimeter

**DINING TABLES Top Finishes**  
20mm marble, 30mm wood

**COFFEE TABLES Top Finishes**  
20mm marble, 20mm wood, 20mm  
cuoio leather



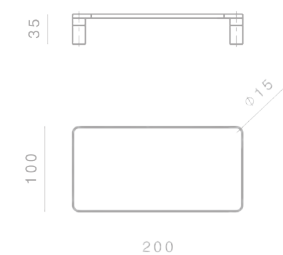
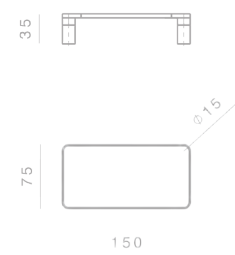
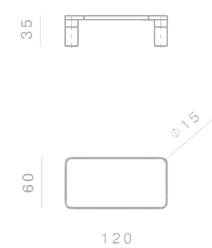
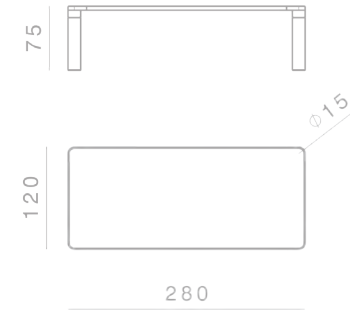
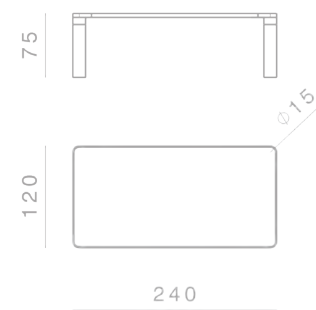
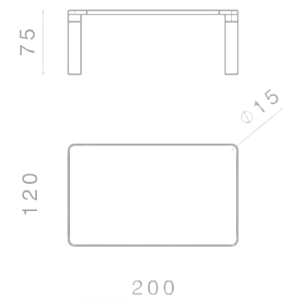
Custom finishes available upon request.

# BOLD

Tables

**Structure**  
Die casted aluminum on the angular elements and extruded aluminum for the supporting structure on the perimeter  
Legs: marble, wood

**Top Finishes**  
20mm marble, 20mm wood



Custom finishes available upon request.

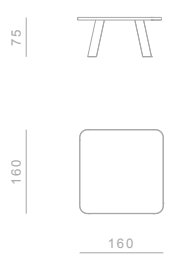
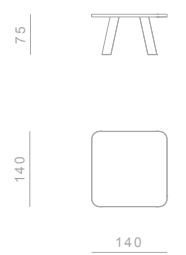
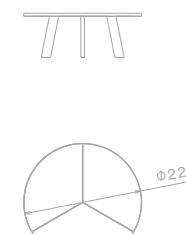
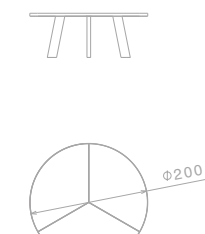
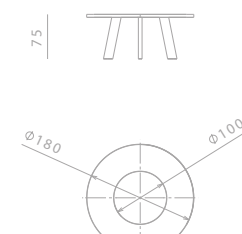
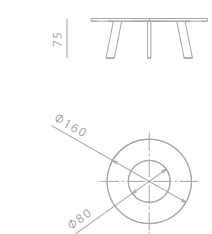
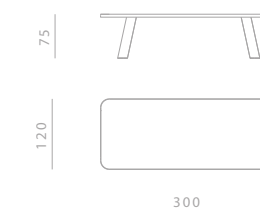
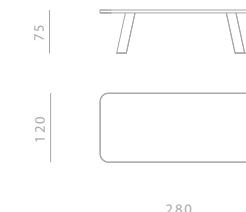
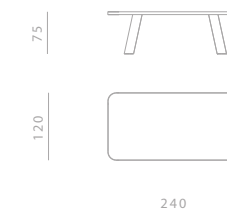
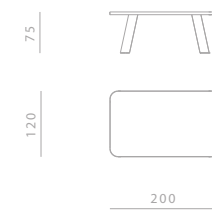
# NATIVE

Tables

**Structure**  
Supporting 30mm wood panel for the top and for fixing legs. Perimetral aluminium, curved for the round versions and extruded with die casted corners in house at Ghidini1961 for the rectangular versions

**Top Finishes**  
20mm wood, 20mm marble (total thickness with the supporting panel 50mm)

**Legs**  
Solid wood, marble



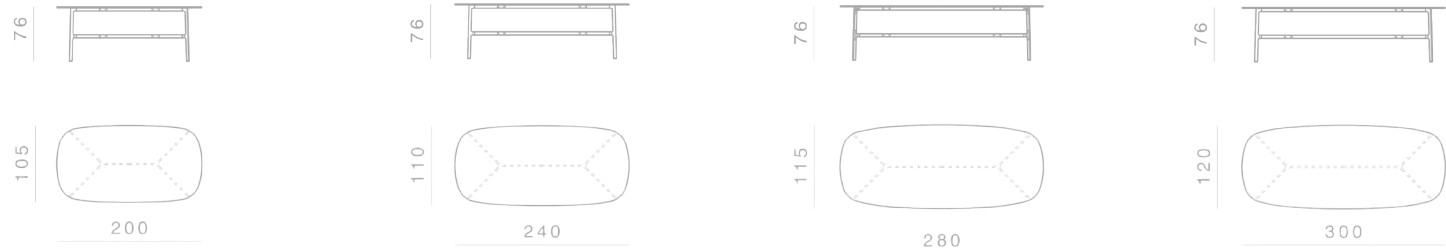
Custom finishes available upon request.

# COAST

Tables

**Structure**  
Die casted brass on the angular elements and tubular aluminium for the supporting structure

**Top Finishes**  
20mm marble, 30mm wood



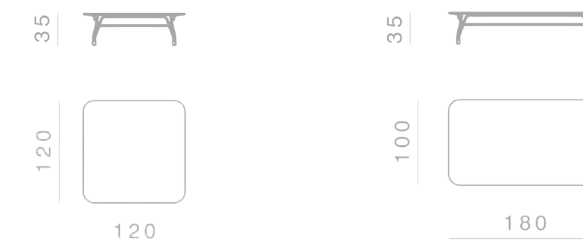
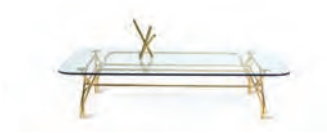
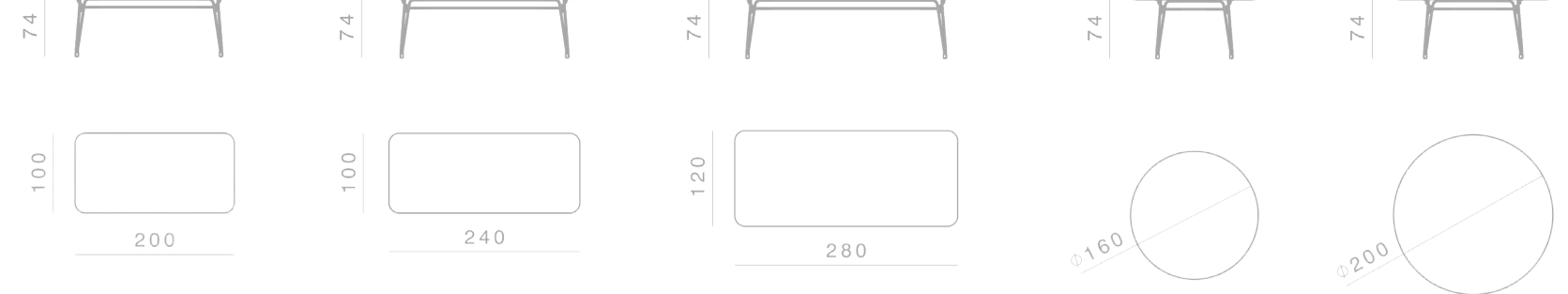
# BOTANY

Tables

**DINING TABLES:**  
**Structure**  
Gilded metal rod with diameter 18mm supporting the structure, with 4 supporting elements for the table top. Satin gold finish

**COFFEE TABLES:**  
**Structure**  
Gilded metal rod with diameter 18mm supporting the structure, with 4 supporting elements for the table top. Satin gold finish

**Top Finishes**  
12mm glass, 30mm wood



# LEGS

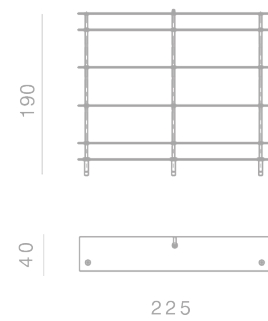
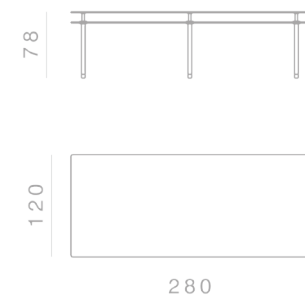
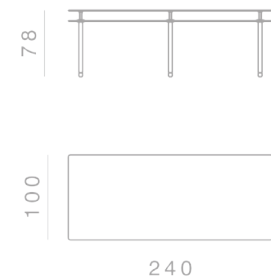
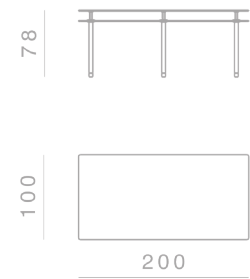
Modular System

**DINING TABLES:**  
**Structure**  
 Solid brass legs lacquered  
 diameter 35mm

**COFFEE TABLES:**  
**Structure**  
 Solid brass legs lacquered  
 diameter 45mm

**Top Finishes**  
 12mm glass, 20mm marble

**Top Finishes**  
 12mm glass, 30mm wood

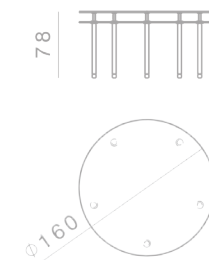
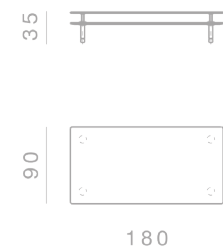
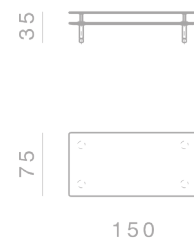
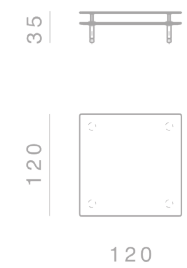
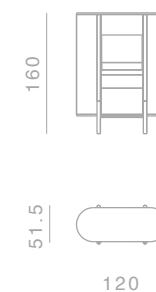
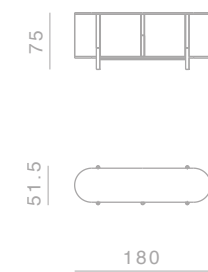
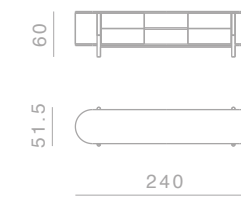


# TARANTINO

Cabinets

**Structure**  
 Extruded aluminum for the  
 supporting structure and for the  
 handles. Wood veneered container.

**Interior**  
 Interior shelving and internal  
 bases covered in wood  
 Opening with internal push system.



Custom finishes available upon request.

# FRAME

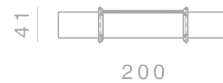
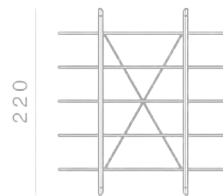
Cabinets & Bookshelves

## Structure

33x60mm oval tubular in aluminium with die-cast corners. Galvanic finish in polished brass, or satin brass and painted burnished brass. Dark Tulip Wood veneered melamine container, matte acrylic polish

## Interior:

interior shelving and internal bases covered in natural leather. Opening with internal push system



# BOLD

Cabinets

## Structure

Die casted aluminum on the angular elements and extruded aluminum for the supporting structure on the perimeter. Wood veneered container

## Interior

Interior shelving and internal bases covered in wood. Opening with internal push system



Custom finishes available upon request.



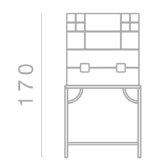
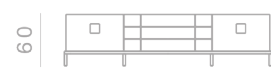
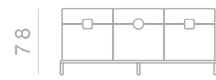
# ZUAN

Cabinets

**Structure**  
30x30mm squared tubular in satin brass and lacquered Mahogany feather veneered melamine container, matte

polished with filling bottom  
Visible shelving in satin brass.  
Top in Green Alps marble.  
Handles in satin brass

**Interior**  
interior shelving and internal bases covered in natural leather



**Katana Armchair**  
design Paolo Rizzatto  
Armchair



**Katana Bench**  
design Paolo Rizzatto  
Bench



**Bold Chair**  
design Elisa Giovannoni  
Chair



**Coast Chair**  
design Branch Creative  
Chair



**Leporello Jr.**  
design Paolo Rizzatto  
Stool



**Love Chair**  
design Nika Zupanc  
Chair



**Miami Chair**  
design Nika Zupanc  
Chair

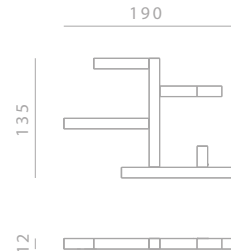
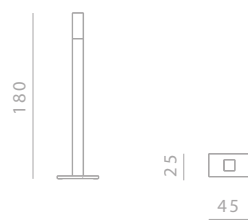


**Miami Table**  
design Nika Zupanc  
Desk

# GIOTTO

Sculptural Light

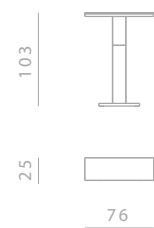
Floor lamp in gold plated stainless steel and plexiglass terminal.



# PORTO

Console

Console in gold plated stainless steel and handmade finish on the upper part. Top featuring a light source to light up vases, books, sculptures.



**Can Can**  
design Johanna Grawunder  
Table Lamp



**Can Can**  
design Johanna Grawunder  
Floor Lamp



**Can Can**  
design Johanna Grawunder  
Suspension Lamp



**Can Can**  
design Johanna Grawunder  
Suspension Lamp



**Jackfruit Lamp**  
design Campana Brothers  
Table Lamp



**Jackfruit Lamp**  
design Campana Brothers  
Table Lamp



**Jackfruit Lamp**  
design Campana Brothers  
Table Lamp



**Flamingo Lamp**  
design Nika Zupanc  
Reading Lamp



**Factory Lamp**  
design Elisa Giovannoni  
Suspension Lamp ø450



**Factory Lamp**  
design Elisa Giovannoni  
Suspension Lamp ø630



**Factory Lamp**  
design Elisa Giovannoni  
Suspension Lamp ø780



**Sfere Double**  
design Paolo Rizzatto  
Suspension Lamp



**Flamingo Lamp**  
design Nika Zupanc  
Table Lamp



**Mio**  
design Aldo Cibic  
Table Lamp



**Bio**  
design Aldo Cibic  
Table Lamp



**Trio**  
design Aldo Cibic  
Table Lamp



**Factory Lamp**  
design Elisa Giovannoni  
Suspension Lamp ø450



**Factory Lamp**  
design Elisa Giovannoni  
Suspension Lamp ø630



**Factory Lamp**  
design Elisa Giovannoni  
Suspension Lamp ø780



**Sfere Single**  
design Paolo Rizzatto  
Suspension Lamp



**Dusk Dawn**  
design Branch Creative  
Suspension Lamp



**Dusk Dawn**  
design Branch Creative  
Table Lamp



**Dusk Dawn**  
design Branch Creative  
Reading Lamp



**Dusk Dawn**  
design Branch Creative  
Floor Lamp



**Indipendant Cylinder**  
design Richard Hutten  
Suspension Lamp



**Indipendant Cone**  
design Richard Hutten  
Suspension Lamp



**Indipendant Round**  
design Richard Hutten  
Suspension Lamp



**Frying Pan Mirror**  
design Studio Job  
Mirror



**Bullet Lamp**  
design Studio Job  
Table Lamp



**Bullet Lamp**  
design Studio Job  
Table Lamp



**One on One**  
design Branch Creative  
Table Lamp



**One on One**  
design Branch Creative  
Table Lamp



**Indipendant Cylinder**  
design Richard Hutten  
Suspension Lamp



**Indipendant Cone**  
design Richard Hutten  
Suspension Lamp



**Indipendant Round**  
design Richard Hutten  
Suspension Lamp



**Frying Pan Mirror**  
design Studio Job  
Mirror



**Gioiello Round Mirror**  
design Nika Zupanc  
Mirror



**Gioiello Rectangular Mirror**  
design Nika Zupanc  
Mirror



**Gioiello Free Standing Mirror**  
design Nika Zupanc  
Mirror



**Gioiello Trapezoid Mirror**  
design Nika Zupanc  
Mirror



**Fan**  
design Setsu & Shinobu Ito  
Mirror



**Da Vinci Table**  
design Richard Hutten  
Coffee tables



**Da Vinci Table**  
design Richard Hutten  
Coffee tables



**Ninfee**  
design Alessandro Mendini  
Coffee tables



**Gioiello Drop Mirror**  
design Nika Zupanc  
Mirror



**Gioiello Oval Mirror**  
design Nika Zupanc  
Mirror



**Gioiello Octagonal Mirror**  
design Nika Zupanc  
Mirror



**Opera Rectangular Tables**  
design Richard Hutten  
Tables



**Opera Round Tables**  
design Richard Hutten  
Tables Ø28



**Opera Round Tables**  
design Richard Hutten  
Tables Ø35



**Opera Squared Tables**  
design Richard Hutten  
Tables



**Kaleidos Large**  
design Campana Brothers  
Mirror



**Kaleidos Small**  
design Campana Brothers  
Mirror



**Portrait With Birdie**  
design Elisa Giovannoni  
Mirror



**Portrait With Little Vase**  
design Elisa Giovannoni  
Mirror



**Flowers**  
design Stefano Giovannoni  
Coffee tables



**Flowers**  
design Stefano Giovannoni  
Coffee tables



**Flowers**  
design Stefano Giovannoni  
Coffee tables



**Sunset Mirror Small**  
design Nika Zupanc  
Mirror



**Sunset Mirror Small**  
design Nika Zupanc  
Mirror



**Sunset Mirror Large**  
design Nika Zupanc  
Mirror



**Sunset Mirror Large**  
design Nika Zupanc  
Mirror



**Butterfly**  
design Richard Hutten  
Coatrack



**Single Butterfly Hook**  
design Richard Hutten  
Coatrack



**Butterfly**  
design Richard Hutten  
Coatrack



**Single Butterfly Hook**  
design Richard Hutten  
Coatrack



**Butler Umbrella Stand**  
design Richard Hutten  
Umbrella stand



**Tumbrella Stand**  
design Richard Hutten  
Umbrella stand



**Sticks Flower Pot**  
design Campana Brothers  
Flower pot



**Sticks Candle Holder**  
design Campana Brothers  
Candle holder



**Here**  
design Studio Job  
Ice bucket



**Here**  
design Studio Job  
Ice bucket



**There (push pin)**  
design Studio Job  
Candlestick



**Nowhere (bullet)**  
design Studio Job  
Vase



**Jackfruit**  
design Campana Brothers  
Sculpural Vase



**Tornado**  
design Campana Brothers  
Sculpural Vase



**Jackfruit**  
design Campana Brothers  
Sculpural Vase



**Medium bowl**  
design Andrea Branzi  
Bowls



**Cylinder bowl**  
design Andrea Branzi  
Bowls



**Large bowl**  
design Andrea Branzi  
Bowls



**Gil&Luc**  
design Noè Duchaufour - Lawrance  
Vase



**Joe&Ema**  
design Noè Duchaufour - Lawrance  
Vase



**Ema&Lou**  
design Noè Duchaufour - Lawrance  
Vase



**Perished**  
design Studio Job  
Bowls



**Perished**  
design Studio Job  
Bowls



**Perished**  
design Studio Job  
Bowls



**Double O**  
design Richard Hutten  
Ice bucket



**Olala Etagere**  
design Richard Hutten  
Etagere



**Double O Tray**  
design Richard Hutten  
Tray



**Perished**  
design Studio Job  
Napkin holder



**Perished**  
design Studio Job  
Tray



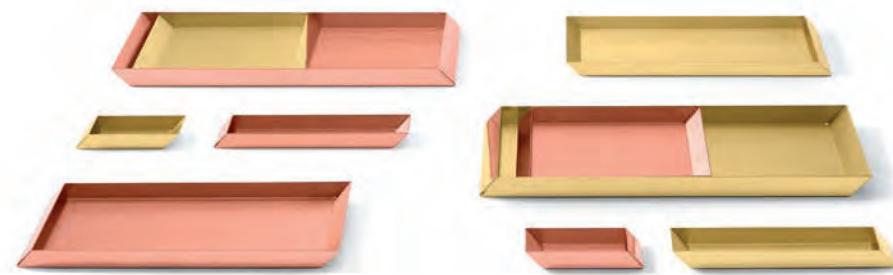
**Tip Top**  
design Richard Hutten  
Pencil holder, trays, bowls,  
Paper basket



**Axonometry**  
design Elisa Giovannoni  
Trays



**Axonometry**  
design Elisa Giovannoni  
Trays



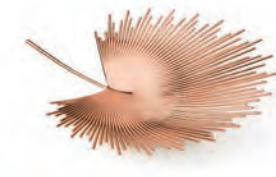
**Axonometry**  
design Elisa Giovannoni  
Trays



**Knotted Cherry Small**  
design Nika Zupanc  
Box



**Knotted Cherry Medium**  
design Nika Zupanc  
Box



**Florida Bowl**  
design Nika Zupanc  
Bowl



**Florida Bowl**  
design Nika Zupanc  
Bowl



**Rabbit**  
design Stefano Giovannoni  
Door stopper



**Rabbit**  
design Stefano Giovannoni  
Paperweight



**Rabbit**  
design Stefano Giovannoni  
Salt&pepper



**Omini**  
design Stefano Giovannoni  
Napkin tray



**Omini**  
design Stefano Giovannoni  
Napkin tray



**Omini**  
design Stefano Giovannoni  
Serving tray



**Omini**  
design Stefano Giovannoni  
Candle holders



**Omini**  
design Stefano Giovannoni  
Candle holders



**Omini**  
design Stefano Giovannoni  
Candle holders



**Omini**  
design Stefano Giovannoni  
Salt&Pepper



**Omini**  
design Stefano Giovannoni  
Napkin holders



**Omini**  
design Stefano Giovannoni  
Candle holders



**Omini Small Bowl**  
design Stefano Giovannoni  
Bowls



**Omini Medium Bowl**  
design Stefano Giovannoni  
Bowls



**Omini Large Bowl**  
design Stefano Giovannoni  
Bowls



**Omini**  
design Stefano Giovannoni  
Candle holders



**Omini**  
design Stefano Giovannoni  
Paper clips holder, business cards holder,  
scotch holder, pencils tray



**Omini**  
design Stefano Giovannoni  
Candle holders

# GHIDINI 1961 INICIHÐ

is a trademark of  
Ghidini Giuseppe Bosco spa

via Gabriele D'Annunzio 27  
25069 Villa Carcina (BS) Italy  
T +39 030 8980521  
F +39 030 8981588  
info@ghidini1961.com

## **Art Direction**

Stefano Giovannoni

## **Press office**

press@ghidini1961.com

## **Sales office**

sales@ghidini1961.com

## **Photos**

Fabrizio Bergamo ppg. 2-3, 14-15, 19, 20-21, 24-25, 26-27, 30, 32-33, 36-37, 38-39, 40-41, 44-45, 46, 48-49, 53, 56-57, 58, 60-61, 62-63, 66, 68, 70-71, 72-73, 76-77, 78, 80-81, 85, 86, 88-89, 92-93, 94-95, 96-97, 100-101, 103, 106-107, 109, 111, 114-115, 116, 117, 118, 122-123, 126, 128, 131, 132, 134, 136-137, 140-141, 142-143, 146-147, 150, 152-153, 156-157, 160-161, 165, 167, 168-169, 172-173, 175, 181, 184-185, 188-189, 192-193, 194-195, 198-199, 203, 204-205, 206-207, 210-211, 212-213, 214-215, 216-217, 218-219, 220, 222-223, 224, 226-227, 228-229, 232-233, 235, 236, 239, 241, 243, 247, 248, 253, 255, 257, 259, 265, 269, 271, 272-273

## **Other Photos**

Cube Photoproduction ppg. 16-17, 18, 22-23, 28-29, 31, 34-35, 42-43, 47, 50-51, 52, 54-55, 59, 64-65, 67, 69, 74-75, 79, 82-83, 84, 87, 90-91, 98-99, 102, 104-105, 108, 110, 112-113, 119, 120-121, 124-125, 127, 129, 130, 133, 135, 138, 139, 144-145, 148-149, 151, 154-155, 158-159, 162-163, 164, 166, 170-171, 174, 176-177, 178-179, 180, 182-183, 186-187, 190-191, 196-197, 200-201, 202, 208-209, 221, 225, 230-231, 234, 237, 238, 240, 242, 244-245, 246, 249, 250-251, 252, 256, 258, 260-261, 262-263, 264, 266-267, 268, 270, 275, 276-277, 278, 279, 284  
Tommaso Sartori ppg. 274

## **Styling**

Candida Zanelli, Rosaria Galli, Serenella Parri

## **Branding**

Christoph Radl, Antonella Provasi

## **Graphic layout and Printing**

Intese Grafiche, Montichiari (Bs)

## **Many Thanks to:**

Bang&Olufsen	Mohebban Milano
Carpet Edition	Rosenthal
Dedar	Salvatori
Dilmos Milano	Sambonet
Ph.Fabrizio Bergamo	Society Limonta
Ph.Giuliano Radici	Stile Original Design
Kasthall	Viabizzuno
L'Idea di Amatori M.Luisa	

www.ghidini1961.com