

GHIDINI
1961
INIDIHG

PART 3

BOLD LIVING CABINET

This family of products makes a bold statement with its generous cylindrical foot, connecting its structural perimeter while delimiting the objects that compose it. With the massive dimensions and the softness of the fittings, the materials are enhanced in their characteristics creating a sculptural effect and giving a distinct personality to each element of the collection. Winner of Wallpaper Design Awards in furniture category.





Bold Living Cabinet and Ottoman, design Elisa Giovannoni



BOLD DINING CABINET

The distinctive metal rim that supports the seats, the tables, the cabinets, graphically encompasses the material with which they are made. This feature is beautifully portrayed in the cabinets, where its profile goes up to define pure and simple wooden volumes with rounded corners.





ZUAN

Different cultural references and needs in time and space are combined in the Zuan cabinet collection.

The classic types of Oriental timeless "cabinets" and the eighteenth-century English "chests" are revisited and updated.

The single piece combines three materials in a variable and versatile way: brass, wood and marble. The brass for the support frames and partition walls, the wood for the containers and the marble for the support surfaces.





ZUAN LIVING CABINET

Elegant family of cabinets with essential lines of Oriental flavor. The slender structure in essence is opposed by four slim legs in gilded metal. Each Zuan is recognizable by the detail of the support, a quarter of a circle with great aesthetic and functionality, which defines the character of the storage unit.







ZUAN LARGE CABINET

The upper part of the cabinet is divided into four sections, in turn divided into smaller niches, drawn according to the golden proportion, inscribable in a perfect spiral. A wunderkabinet to exhibit our wonders.





Zuan Living Cabinet, design Paolo Rizzatto



ZUAN LIVING CABINET Design Paolo Rizzatto



Zuan Dining Cabinet, design Paolo Rizzato



ZUAN DINING CABINET Design Paolo Rizzato

LEGS BOOKSHELVES

From the idea of almost a unique object in its perfect craftsmanship, to the system to be built starting from the base. A column made of brass that multiplies to infinity, to be interrupted and resumed to hold glass tops, wood or marble to configure even angular shelves and tables of any sizes and shapes.





INCROCIO Design Andrea Branzi



PORTO CONSOLE Design Andrea Branzi

ONE ON ONE TABLE LAMP

This lamp speaks to the unique ability to light up different sections of the lamp body, and it expresses and inspires intimacy while talking with someone one on one.

The One on One is composed by two blown glass elements, with the lower being metalized and housing an internal glass cylinder to give a sculptural effect to the light source. The upper glass is frosted to provide a significant brightness.





JACKFRUIT TABLE LAMP

The Jackfruit it is composed of two overlapping cylinders, the large stem supports an important brass lampshade decorated with a thousand leaves bent by the wind. The perforated structure and the opening of the lampshade create suggestive radiations of light, like light passing through the dense foliage of a tropical forest.



DUSK DAWN

"It's the time when the sun drops below the horizon, leaving a glow that signals the arrival of the night, and gently takes us back to the warm embrace of dawn light in the morning."
An intersection game of two forms to define a soft and geometric tone, a cloud of light arising from the glass diffuser seated on a solid brass cone.



MIO BIO TRIO

Mio, Bio and Trio are born from the idea of creating a gentle form, light but consistent and timeless, using brass as a single material.

Thanks to the versatility of the rod it is possible to create articulated and original structures, while the sheets allows to realize the lampshades which spread a golden light, warm and soft. “

The satinated finish give these sleek table lamps a refined and understated allure allowing them to easily feature in residential, hospitality and office environments.



CAN CAN

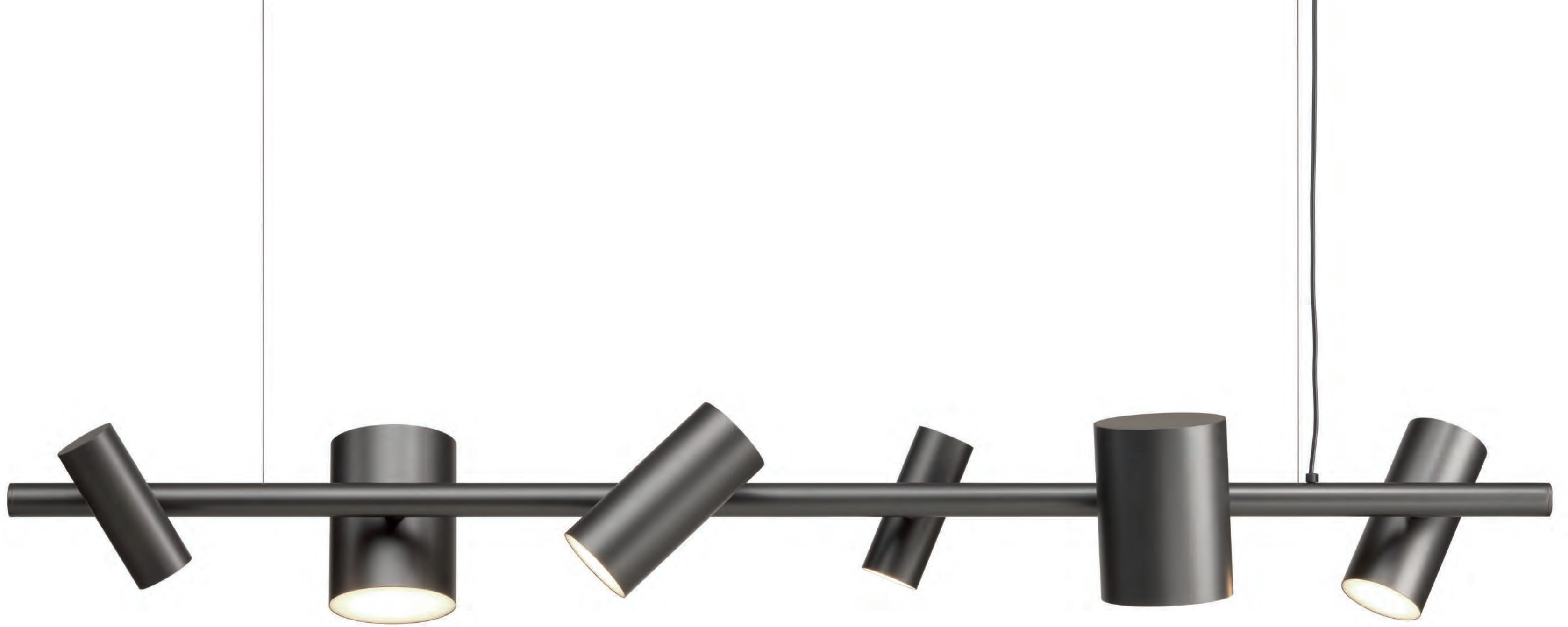
Can Can is a kick of light up and down. A multi-directional light, adjustable for maximum flexibility and effect, Can Can easily becomes task, accent and ambient light all at once. With Can Can, light is a result of personalized choreography. Light is a subjective quality: Can Can gives options.



CAN CAN TABLE LAMP Design Johanna Grawunder



Can Can Floor Lamp, design Johanna Grawunder







Factory Lamp, design Elisa Giovannoni



SFERE DOUBLE Design Paolo Rizzato



INDIPENDANT

The inspiration came from utilitarian factory lamps. The key element is the way they hang. A simple, elegant pendant lamp which works in many different environments. The brass gives a warm reflection and they can be used both at home as well as in commercial environments such as shops and restaurants.

GIOIELLO MIRRORS

These pieces instantly evoke stardust-spangled memories of exotic empires past. A titillating triumph that turns the spirit of endless summer malaise into excitement, and distanced detachment into a visceral desire to shop, to have, to run your hands over exquisitely polished surfaces.



GIOIELLO ROUND MIRROR Design Nika Zupanc



Gioiello Free Standing Mirror, design Nika Zupanc

KALEIDOS

Large sculptural wall light in stainless steel.

The piece is composed of six mirror blades. The gilded mirrors create a kaleidoscope of golden tones and reflections. The piece can be used as a lamp as it is backlit', explains Fernando Campana. And Humberto adds 'It will be a mirror with the possibility of different sizes and colors. A geometric piece that can produce various designs. We were inspired by Lygia Clark's Bicho critter sculptures'.



TAKE ME TO MIAMI

These pieces instantly evoke stardust-spangled memories of exotic empires past. A titillating triumph that turns the spirit of endless summer malaise into excitement, and distanced detachment into a visceral desire to shop, to have, to run your hands over exquisitely polished surfaces.



SUNSET MIRROR Design Nika Zupanc



Take me to Miami, design Nika Zupanc



Fan Mirror, design Setsu & Shinobu Ito



FAN MIRROR Design Setsu & Shinobu Ito



Frying Pan, design Studio Job



Portrait with birdie, design Elisa Giovannoni

LEPORELLO

The height-adjustable stool, subject of which you can appreciate the adaptability with a gesture, in different contexts and users, becomes a precious object, with light or dark oak legs slightly bent and round seat in die casted brass.



LEPORELLO JUNIOR Design Paolo Rizzatto



LEPORELLO SENIOR Design Paolo Rizzatto



DA VINCI TABLE Design Richard Hutten



FLOWERS TABLE Design Stefano Giovannoni



OPERA TABLES Design Richard Hutten



TUMBRELLA & BUTLER UMBRELLA STANDS Design Richard Hutten

BUTTERFLY

Coats flit from coat hanger to coat hanger like butterflies go from one flower to another. Butterflies have been a source of inspiration through art history. From the ancient Egypt, to the Renaissance until now it has always been a theme. The Butterfly coat hanger is both playful and elegant. Available in a single version too – to be hanged to the wall.



BUTTERFLY COAT RACK Design Richard Hutten

JACKFRUIT

Jackfruit is a numbered vases edition, an object that for its exclusivity completes every environment with its strong sculptural presence.

The vases are available in two different finishes. The first is a single block of hand casted bronze. The second mixes two materials, brass and wood, and is divided into three sections: the upper and lower are composed of an articulated brass casting, the central part is in wood. Both are presented as absolute protagonists of the living.



TORNADO

Spiral of super-glossy brass, a dizzying vortex of reflected light. A thousand liquid rings rise from a hypothetical sea, expand and crown themselves with fragrant flowers.

It's a highly evocative object, fascinating for its shape and shine.

The one designed by the Campana Brothers is a good tornado, the only one that brings color and light into the home.





HERE (THIMBLE) Design Studio Job



Nowhere (bullet vase), design Studio Job



THERE (PUSH PIN) Design Studio Job



Omini Bowls, design Stefano Giovannoni



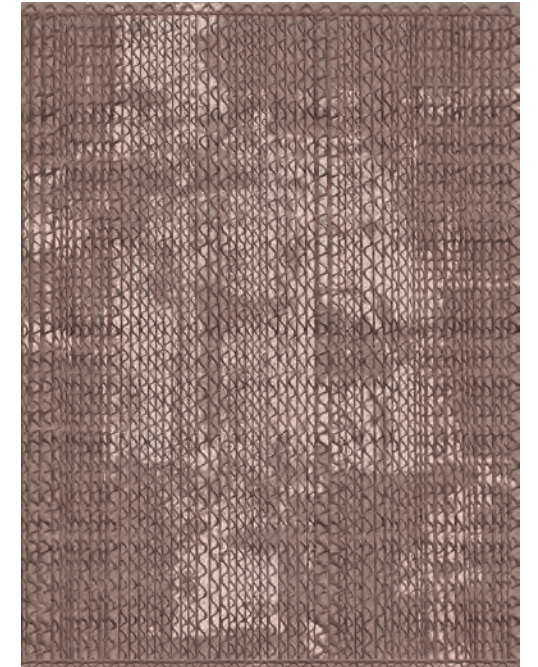
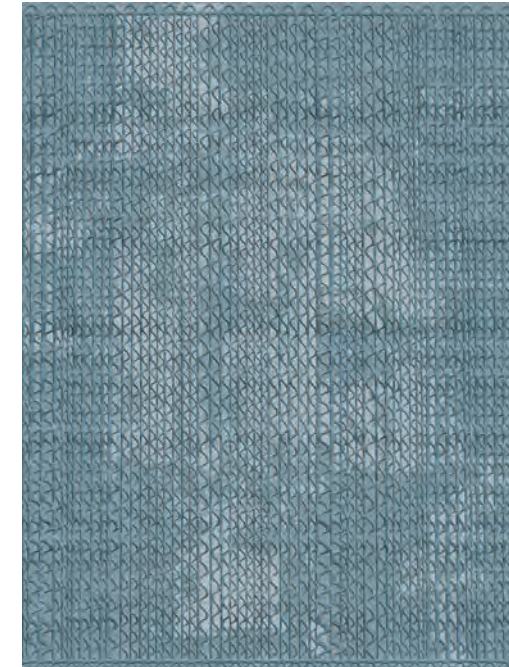
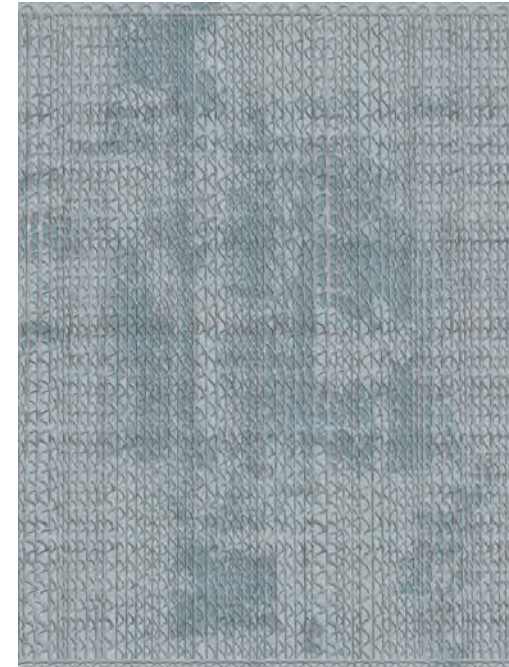
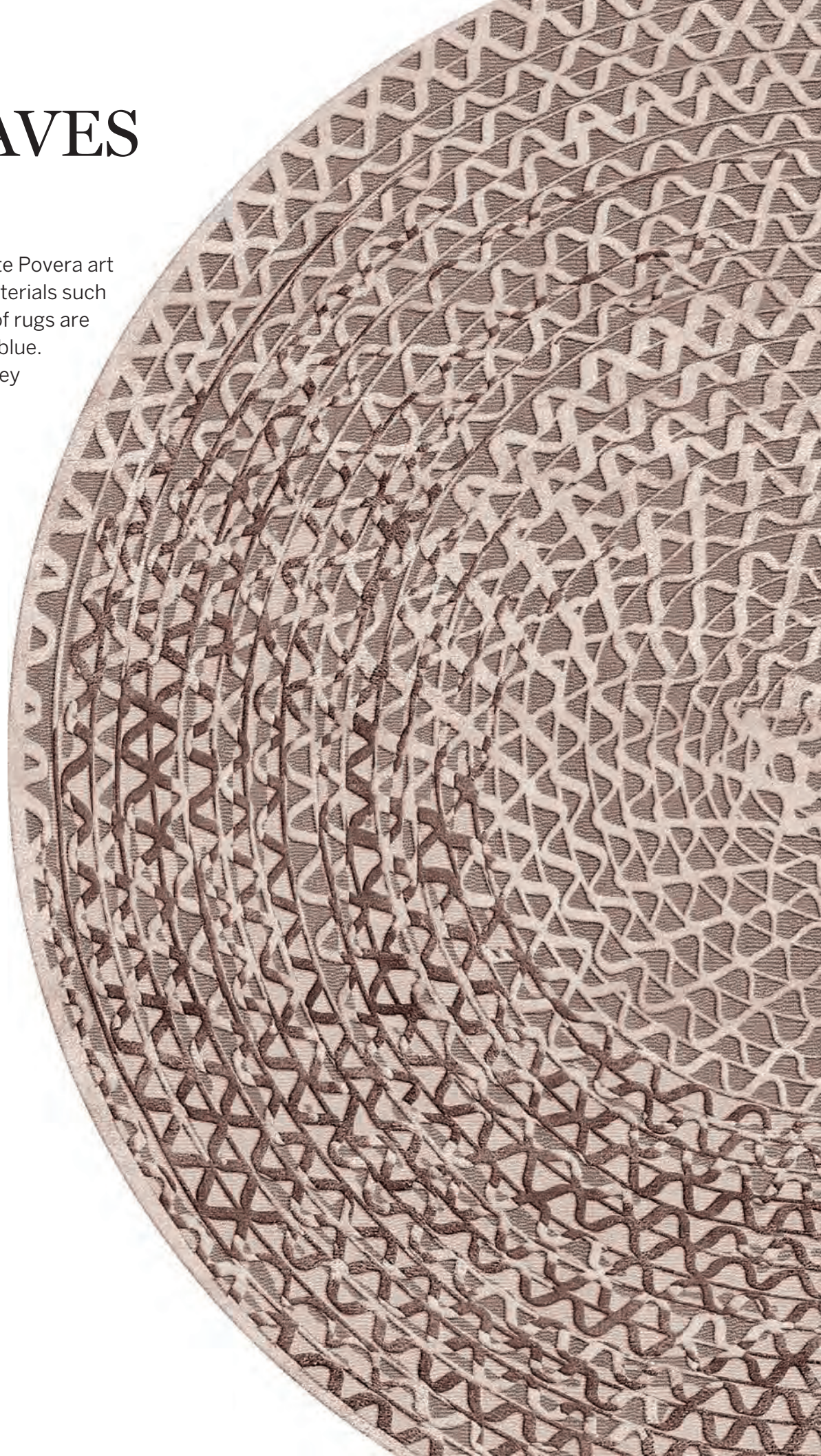
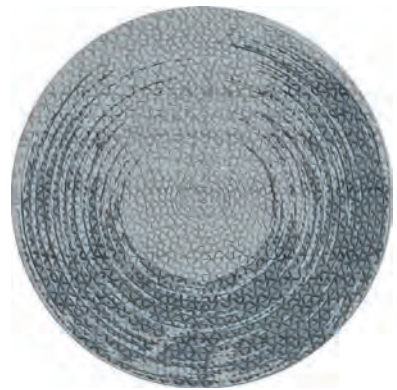
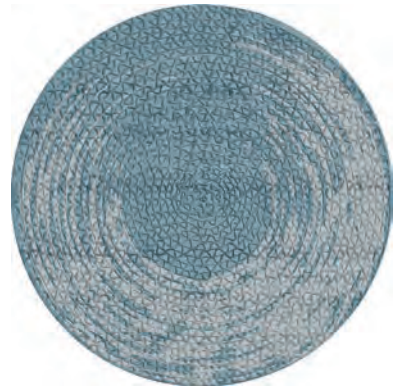
Cestini Collection, design Andrea Branzi



Flirt Collection, design Noé Duchaufour-Lawrance

TRIPLE WAVES RUGS

Inspired by the experimentation of Arte Povera art of the seventies that used unusual materials such as corrugated cardboard, this family of rugs are available in shades of beige, gray and blue. The important dimensions in which they are proposed can be customized on customer request.



CONNECT RUGS

Made of natural materials in different textures, the Connect rugs bring warmth to any room. The rich monochrome color palette in a variety of shades will be the center of your space.

