

**GOLRAN**

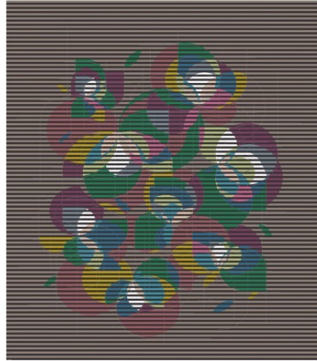
1898

# DRAFT & SELECTION OF THE COLORS



Color Combination

- 1 2 PLY DC-07 (Wool) 1 PLY DT-05 (Silk) (3mm) cut
- 2 2 PLY CE-02 (Wool) 3 PLY CB-06 (Silk)(3mm) cut
- 3 3 PLY AB-07 (Wool)(3mm) cut
- 4 2 PLY DT-05 (Wool) 1 PLY DC-07 (Silk)(Sumac)
- 5 2 PLY CB-06 (Wool) 1 PLY CE-02 (Silk)(3mm) cut
- 6 2 PLY AB-08 (Wool) 1 PLY AB-07 (Silk)(3mm) cut
- 7 2 PLY AB-07 (Wool) 1 PLY AB-08 (Silk)(3mm) cut



- | Color |            |
|-------|------------|
| 1     | BL-02 wool |
| 2     | BL-02 Silk |
| 3     | BL-05 silk |
| 4     | BS-01 wool |
| 5     | CA-03 wool |
| 6     | CA-01 wool |
| 7     | CA-02 wool |
| 8     | CA-04 wool |
| 9     | BM-03 wool |
| 10    | BM-05 wool |
| 11    | BM-08 wool |
| 12    | CR-07 wool |
| 13    | CR-05 wool |
| 14    | DP-12 wool |
| 15    | DB-09 wool |



Color Combination

- DO-03 (wool) Twin lock
- Gold Sumac
- AG-03 (silk)
- DO-03 (wool)
- CS-02 (silk)
- AS-08 (wool)
- CB-02 (wool)
- CS-02 (wool)
- AS-08 (silk)
- CS-02 (wool) Twin lock
- Banar Sumac
- DO-03 (silk)
- AS-06 (wool)
- AS-04 (wool)
- AC-08 (wool)



- BK-07 wool
- BK-10 wool
- BL-12 wool
- CR-12 wool
- BK-05 wool
- BK-03 wool
- CR-12 wool + silk
- CH-12 wool + silk
- CJ-10 wool + silk
- CD-07 wool + silk



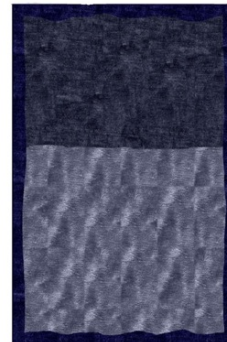
Color Combination

- 1 2 PLY DC-07 (Silk) (3mm) cut
- 2 3 PLY DC-07 (Silk) (3mm) cut
- 3 2 PLY DC-07 (Wool) (3mm) cut



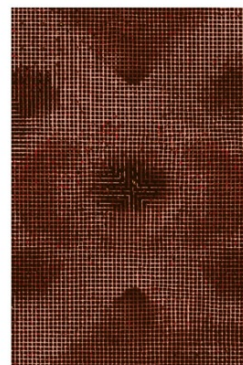
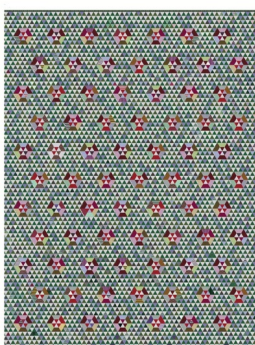
Color Combination

- 1 CE-02 3 ply silk 5mm, cut
- 2 CE-02 3 ply wool 3mm, cut
- 3 CB-06 3 ply silk 5mm, cut
- 4 CB-06 2 ply silk + CE-02 1 ply silk 5mm, cut
- 5 DO-06 silk 2 ply + CE-01 silk 1 ply 5mm, cut
- 6 DO-01 silk 2 ply + DO-06 silk 1 ply 5mm, cut



Color Combination

- 1 2 PLY DC-07 (Silk) (3mm) cut
- 2 3 PLY DC-07 (Silk) (3mm) cut
- 3 2 PLY DC-07 (Wool) (3mm) cut



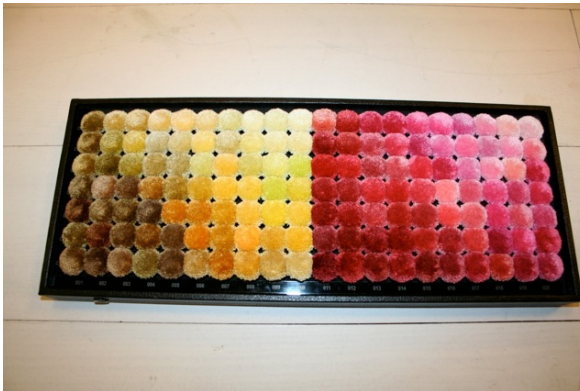
Wool: AI 12 / DO 12 / DR 10  
 DE 00 / EG 00 / AN 04  
 EI 01 / EG 01 / AA 03

Silk: C 08 / C 08  
 A 00 / A 01



# DRAFT & SELECTION OF THE COLORS

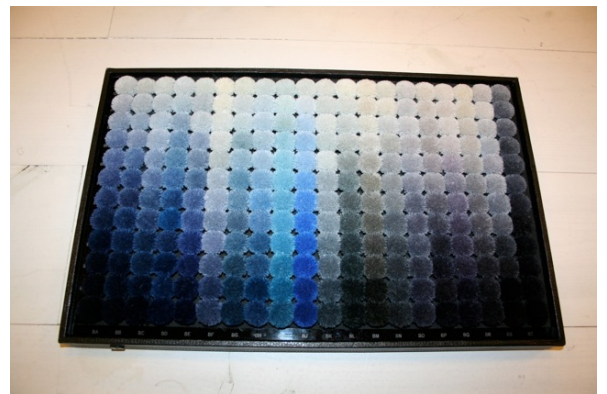
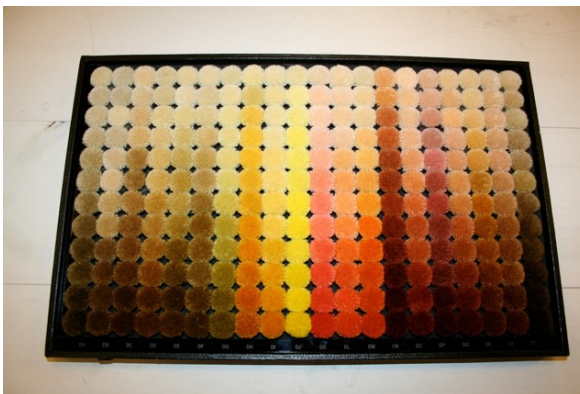
## Silk reference colors





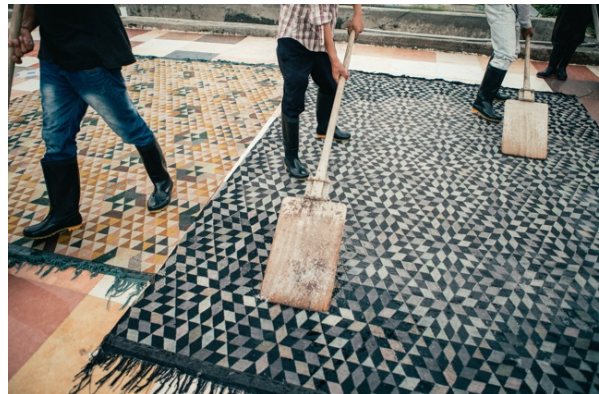
# DRAFT & SELECTION OF THE COLORS

## Wool reference colors





# DYEING, PATTERN PAINTING, WEAVING FINISHES & RAW MATERIAL





# COLLECTIONS & DESIGN



## PARALLELI

TECHNIQUE	SIZES
Hand finished	300 x 200
	300 x 300
	400 x 300
COMPOSITION	
B1: 70% wood, 20% silk, 10% metal	
B3: 70% wood, 15% silk, 15% metal	
B4: 60% wood, 10% silk, 30% metal	

Handmade in Nepal  
Custom size on request

29

## LAKE COLLECTION DESIGN RAW EDGES

The collection, conceived as second reading of the pattern rug, takes its inspiration from the lensular based artist Nassim Agajee who, together with Victor Vasarely, revolutionized the world of optic perception in art. An essential collection, capable of moving from the vivid colours of daytime to the less bright shades of the evening, just like the mirror of water of a lake, "agajee" in Italian, changes its reflection.  
As the designers explain: "Imagine a rug that looks very vivid and colourful when you leave home, but the very same rug will appear more relaxing and calming when coming back from work. It's like having two approaches for one thing, two different ways to look at it but then when standing at the right place, you could actually see the whole picture. This may sound like Russian confusion but it is all based on existing optical illusion techniques that thanks to Goltz, and their craftsmen in Nepal, has been translated into marvellous rug making. The graphics of the first series is based on traditional tiles, but here in varying heights of pile technique."

## COLLEZIONE LAKE DESIGN RAW EDGES

La collezione pensata come rilettura del tappeto persiano, è ispirata all'arte lenticolare dell'artista iraniano Nassim Agajee che, di pari con Victor Vasarely, ha rivoluzionato il mondo della percezione ottica nell'arte. Una collezione cangiante, capace di passare dai colori vivaci del giorno ai toni meno spinti, proprio come l'acqua che riflette lo specchio d'acqua di un lago, "Agajee" in italiano.  
Come dicono i designers: "Immaginare un tappeto che appare vivace e coloratissimo nel momento in cui uscite di casa, ma che sembra più rilassante e rassicurante quando tornate dal lavoro. È come avere due approcci diversi verso una cosa, due diversi modi di guardarla. Eppure, se vi si mette nel punto giusto, è possibile avere una visione complessiva. Potrebbe sembrare un'illusione che crea confusione, ma effettivamente è tutto a base di una tecnica ottica lenticolare che grazie a Goltz e ai suoi artigiani nepalesi, è stata tradotta nella meravigliosa arte della tessitura dei tappeti. La grafica della prima serie è basata su motivi tradizionali, in diverse varianti di altezza del pelo."

## RAW EDGES BIOGRAPHY

The official collaboration between Yael Meir & Shay Ribak started after many years of sharing his thoughts and ideas. Yael's main focus includes turning two-dimensional sheet materials into conventional functional forms, whereas Shay is fascinated by how things move, function and react. Since their graduation show at the Royal College of Art in 2006, they have received several highly regarded awards including The British Council 'Selected Award', 'Gold Award', Dutch Design Award, Wallpaper\* Design Award 2009 and the Elle Decoration International Design Award for Best Furniture of 2008-09 and awarded as the Designer of the Future for 2009 from Design Miami/ Basel. Their work has been exhibited internationally and can be found within the permanent collection of the MoMA New York and other museums. They for clients including Cappello's, Established & Sons, Morris Knudsen, Stella McCarty, Arco, Maitre Lema and in addition, Yael & Shay produce from time to time unique and limited-edition designs and installations within their own studio in London. Their work has been featured in many major design publications and newspapers worldwide.

## BIOGRAFIA RAW EDGES

La collaborazione ufficiale tra Yael Meir e Shay Ribak ebbe inizio molti anni fa, con la condivisione di una passione e idee. Il principale obiettivo di Yael consiste nel trasformare materiali bidimensionali in funzionali forme curve, mentre Shay è affascinato dal modo in cui gli oggetti si muovono, funzionano e reagiscono. Fin dai tempi della laurea al Royal College of Art nel 2006, hanno ricevuto diversi riconoscimenti prestigiosi tra cui The British Council 'Selected Award', 'Gold Award', Dutch Design Award, Wallpaper\* Design Award 2009 e Elle Decoration International Design Award per il migliore articolo d'arredamento del 2008-09. Sono stati inoltre premiati come Designer of the Future per il 2009 da Design Miami/ Basel. Le loro opere sono state esposte in tutto il mondo e fanno parte della collezione permanente del MoMA a New York e di altri musei. Tra i loro clienti troviamo Cappello's, Established & Sons, Morris Knudsen, Stella McCarty, Arco, Maitre Lema. Inoltre, Yael & Shay producono di tanto in tanto pezzi di design unici e in edizione limitata e installazioni presso il loro studio di Londra. Il loro lavoro è apparso sulle principali riviste di design e sui giornali di tutto il mondo.



40



## LAKE

TECHNIQUE	SIZES
Lenticular Hand finished	300 x 300
	300 x 200
	300 x 280
COMPOSITION	
Wood (75%)	
Barbecue silk (25%)	

Handmade in Nepal  
Custom size on request

41





# COLLECTIONS & DESIGN

## COLLECTION MEMORIES DESIGN ISABELLA SODI

A unique original collection designed for Gobet by artist and designer Isabella Sodi from Florence. She transmits her precious aesthetic and cultural know-how of interior design and haute couture through her personal interpretation of the carpet. The collection includes items charged with a powerful emotional impact, suspended between past and future. It is firmly anchored to tradition, starting from the production site - Napaï - where the most important "rugs making tool" is a experience. The result is a collection that, with great sensitivity, delves into the precious art of rug weaving, focusing in particular on the ancient Oriental techniques. The use of colors is very personal, made of light variations that vibrate between the sheen of silk and the "slimy" patina of wool. A mix of fibers and textures imbued with finer touches of slight imperfections that are incorporated on purpose in order to create rugs that speak to the silence of interior and handicraft. The collection, which each year adds new colors, is available in the basic version in linen, wool, silk, and natural fibers, and in cashmere in the top of the range.

## ISABELLA SODI BIOGRAPHY

Florence native Isabella Sodi began her extensive career in the fields of fashion and design as an interior designer for exhibitions, homes, and shops. She moved to Milan to focus on fashion design and then to Rome, where she worked passionately on haute couture. She has since returned to Milan, where she now lives, and is much appreciated in the field of furnishings and interiors.



54

## COLLEZIONE MEMORIES DESIGN ISABELLA SODI

Una collezione originale e unica disegnata per Gobet dall'artista e designer fiorentina Isabella Sodi che trasferisce il suo prezioso bagaglio estetico-culturale a livello tra interior design e alta moda, nella sua personale interpretazione del tappeto. La collezione è costituita da pezzi dal forte impatto emotivo sospesi tra passato e futuro. Fortemente ancorata alla tradizione, comincia dal luogo di produzione - il Napaï - dove lo strumento di lavoro più affascinante è l'esperienza dove mano della sapienza antica si muovono con maestria su vecchi telai, dove si fregono a mano con effetti imperdibili i filati più nobili, andando a creare spumose e ricche disegni classici. La collezione di tappeti Memories accoglie tutte le sfumature e le suggestioni della natura, bilanciate con eleganza, colori mai "sfocati" ma quasi neonati, trasparenti e opacissimi nella brillantezza della seta, del bambù e delle sue spicchi e profondi nella lana e nel lino, naturalmente imperfetti nella loro consistenza e volutamente imperfetti negli abbinati, magari manualmente. L'effetto dei colori è molto personale, fatto di sfumature tenui che vibrano tra la lucentezza della seta e la patina "grassissima" della lana. Un mix di filati e strutture dove i segni tecnici di fine lavorazione sono inseriti nel arte per dell'effetto e della manualità.

## BIOGRAFIA ISABELLA SODI

Isabella Sodi vanta una lunga esperienza nei settori della moda e del design. Fiorentina, inizia a lavorare come interior designer per allestimenti, case e negozi. Apprendo quindi a Milano, per dedicarsi al fashion design e poi a Roma dove lavora con passione nella moda. Torna nuovamente a Milano dove oggi vive occupandosi di arredamento e decorazione.

TORKAPI Wool TORKAPI Linen TORKAPI Hand silk TORKAPI Silk TORKAPI Cashmere

MARE ANTONETTE Agave MARE ANTONETTE Silk MARE ANTONETTE Dark Blue MARE ANTONETTE Emerald

TAJ MAHAL GRAND PALAIS JARDIN DIVER HERMITAGE Cashmere HERMITAGE

FIRUZABAD Cashmere FIRUZABAD Wool FIRUZABAD Cashmere FIRUZABAD Silk FIRUZABAD Cashmere

FIRUZABAD Cashmere FIRUZABAD Wool

## MEMORIES

TECHNIQUE	SIZES
Hand loomed	300 x 200
	300 x 240
COMPOSITION	340 x 260
Wool & silk	400 x 300

Handmade in Nepal  
Custom size on request

55

## SHADOWS COLLECTION DESIGN ISABELLA SODI

The Shadows collection interprets three different ancient looting techniques of oriental craftsmen in a modern way. The collection includes all the colors and suggestions from the natural world, merged into a sophisticated balance. Colors are never "gaudy" but barely whispered, clear and equalized in the balance of silk, bamboo and wool, with the depth conveyed by a matt finish on wool, naturally imperfect in unrefined wools and intentionally imperfect in the handcrafted abash effect. Colors, which are chosen with a highly personal approach, center on light nuances that vibrate under the sheen of silk and the "slimy" finish of wool and linen. In this blend of fibers and weaves, the artistic touches of slight imperfections are expertly measured to create carpets that also enhance the allure of interior and skilled craftsmanship.

Designed by Isabella Sodi, the collection includes four carpets made of wool and silk that seem to brighten and darken depending on the direction of the carpet's main fiber twist. The manual production process enriches the collection with reflections and tones that enrich its apparent simplicity.

## ISABELLA SODI BIOGRAPHY

Florence native Isabella Sodi began her extensive career in the fields of fashion and design as an interior designer for exhibitions, homes, and shops. She moved to Milan to focus on fashion design and then to Rome, where she worked passionately on haute couture. She has since returned to Milan, where she now lives, and is much appreciated in the field of furnishings and interiors.



60

## COLLEZIONE SHADOWS DESIGN ISABELLA SODI

La collezione Shadows, utilizza le diverse antiche tecniche di arrotamento degli artigiani orientali per creare dei tappeti monocromatici assolutamente contemporanei. Disegnata da Isabella Sodi, la collezione si compone di diversi tappeti realizzati in lana e seta, capaci di illuminare e scurire a seconda dell'angolo dalla luce di lettura del tappeto. La collezione, grazie al procedimento di realizzazione artigianale, è improntata di effetti e toni che ne animano la semplicità apparente, sottolineando la ricchezza stilistica di ogni singolo pezzo. La collezione, disponibile in diverse tonalità monocromatiche, è in grado di adattarsi perfettamente su ogni ambiente più classico che a quelli più contemporanei grazie alla mescolanza dei pezzi antichi della recente ricerca della seta.

## BIOGRAFIA ISABELLA SODI

Isabella Sodi vanta una lunga esperienza nei settori della moda e del design. Fiorentina, inizia a lavorare come interior designer per allestimenti, case e negozi. Apprendo quindi a Milano, per dedicarsi al fashion design e poi a Roma dove lavora con passione nella moda. Torna nuovamente a Milano dove oggi vive occupandosi di arredamento e decorazione.

WHITE ALLUMINIO AGATA SILVER BROWN

BEIGE BROWN LIGHT BROWN SWEET PINK

GOLD LARS RAME

## SHADOWS

TECHNIQUE	SIZES
Hand loomed	300 x 200
	300 x 240
COMPOSITION	340 x 260
Wool & silk	400 x 300

Handmade in Nepal  
Custom size on request

61



# COLLECTIONS & DESIGN

## CARPET RELOADED COLLECTION

With this collection Golran combines its long standing experience and know-how with creative flair and experimentation thus anticipating a trend in culture, changing it into a new one. Carpet Reloaded revisits and reinterprets oriental carpets produced throughout the 1900s with new cutting edge techniques. The past, with its materials and traditional weaving techniques, is presented into the present through decoloration processes and subsequent monochromatic re-dyeing that endows carpets with a new identity. The unique and original results of this process are previous, entirely handmade items. Despite the similar workmanship and mood, no two carpets are identical.

Fabrication: Hand Knotted Pile Vintage Rugs.

## COLLEZIONE CARPET RELOADED

Questa collezione Golran rivisita e ripropone l'esperienza maturata negli anni e il know-how dell'azienda, con la creatività e la sperimentazione anticipando così le tendenze vintage ed anti-macchinabile in un nuovo modo. Carpet Reloaded rivede e reinterpreti i tappeti orientali della prima e della seconda metà del '900 con tecniche nuove e d'avanguardia. Il passato, con i suoi materiali e le tecniche tradizionali di tessitura, è presentato nel presente attraverso processi di decolorazione e successive rievocazioni monocromatiche che danno ai tappeti una nuova identità. Il risultato unico e originale sono pezzi unici, tutti realizzati a mano, simil per tipo di lavorazione e mood ma tutti diversi l'uno dall'altro. La collezione Carpet Reloaded ha dato vita grazie alle linee di tappeti classici Decolorati e Pile Vintage, decolorati e rivisti, ad una nuova tendenza d'abitare.

Fabricazione: tappeti vintage in lana annodati a mano



**CARPET RELOADED**

TECHNIQUE  
Hand knotted

COMPOSITION  
Pile (90%)  
Cotton (10%)

Handmade in Turkey  
Custom size on request in  
particular collection

Each rug of the Carpet Reloaded collection is a unique vintage piece.  
To see more of the collection - visit [www.golran.com](http://www.golran.com).

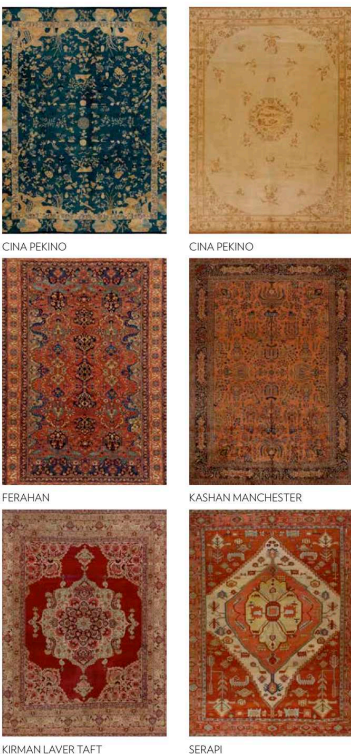
## TRADITIONAL COLLECTION

**ANTIQUÉ**  
With over 100 years of experience and tradition in the sector, and thanks to a well-established network of experts operating on the leading markets and at the most important auction houses, Golran has created a collection of precious antique carpets. It is the fruit of meticulous selection to identify only the most prized pieces. Dating from the nineteenth to the early twentieth century and produced by famous master weavers, they are the highest expressions of Oriental and European carpets, of great value and sophistication appropriate for furnishing and embellishing all settings.

With their decorations and motifs they are excellent examples of a historical heritage and recount ancient traditions that have been handed down through the generations until becoming authentic collector's pieces and antique today. They bear witness to the fact that the art of the carpet has always been a symbol of the aspiration to beauty.

Each region and each country has its own recognizable motif which reflects the style and culture of its place of provenance. Antique carpets carry their history and their origins with them, woven and embroidered.

**ANTICHI**  
Forte di un'esperienza e una tradizione più che centenaria nel settore, Golran, grazie ad una consolidata rete d'esperti nei più importanti Mercati e Case d'Asta, ha creato una collezione di preziosi tappeti antichi. Risultato di un attento e serio lavoro di selezione per individuare solo i manufatti pregiati. Databili dall'800 ai primi del '900, e provenienti dai famosi maestri tessitori, sono le più alte espressioni del tappeto orientale ed europeo, di grande valore e raffinatezza. In grado di arredare e impreziosire ogni ambiente.  
Con i loro decori e motivi diventano esempi eccellenti di un patrimonio storico e raccontano di tradizioni antiche tramandate di generazione in generazione fino a diventare oggi dei veri e propri pezzi da collezione e d'antiquariato. E testimoniano come l'arte del tappeto sia da sempre simbolo dell'aspirazione alla bellezza.  
Ogni regione e ogni paese ha un proprio motivo decorativo riconoscibile che rispecchia lo stile e la cultura del luogo di provenienza. Il tappeto antico parla con se, tessuto e ricamato, la sua storia e le sue origini.



## ANTIQUÉ

TECHNIQUE  
Hand knotted

COMPOSITION  
Natural wool  
Cotton

Handmade Iran, India, Turkey, China

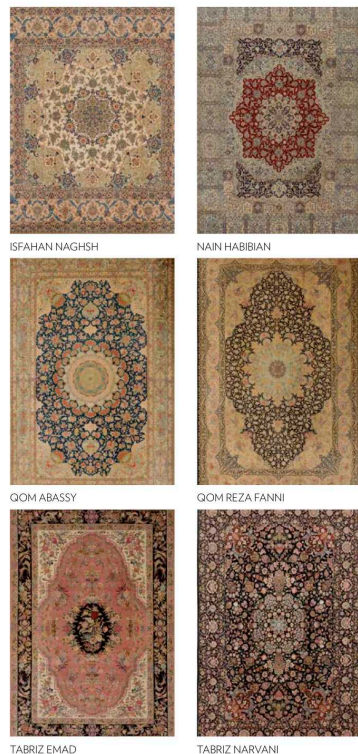
The carpet presented on these pages are a sample of our collection.  
To see more of the collection - visit [www.golran.com](http://www.golran.com).

## COLLEZIONE TRADITIONAL

**CLASSIC**  
A collection of precious carpets dating from the mid-twentieth century to the current day they are inspired by original antique models, whose values they express along with the honour of representing one of the highest expressions of Oriental, and particularly Persian, art and culture.  
Vaunting a tradition handed down for over three generations, Golran continues its fascinating search for prized pieces, also selecting contemporary master knotters capable of freely interpreting the models of the past without distorting them, but rendering them in a style more appropriate to today's needs and lifestyles. The decorations and patterns are rich and elaborate, like the use of colours, embellished with elegant working techniques using precious yarns like wool and silk.

Like their illustrious antique models, they not only exemplify the art of weaving, but are also capable of giving rooms a strong, personal style.

**CLASSIC**  
Una collezione di pregevoli tappeti databili dalla metà del '900 fino ad oggi. Dai modelli originali antichi riprendono l'ispirazione e i valori, insieme all'onore di rappresentare una delle manifestazioni più alte della cultura e dell'arte orientale soprattutto persiana.  
Golran, con una tradizione che si tramanda da più di tre generazioni, continua la sua affascinante ricerca di pezzi di pregio, selezionando anche dei maestri annodatori contemporanei capaci di interpretare liberamente i modelli del passato senza stravolgerli, ma dandone una lettura più in linea con le esigenze e gli stili di vita attuali. Le decorazioni e le fantasie sono ricche ed elaborate così come l'utilizzo dei colori, impreziositi dalle eleganti lavorazioni, con filati pregiati come la lana e la seta.  
In comune con i loro illustri modelli antichi, oltre all'arte della tessitura, hanno la capacità di infondere agli ambienti un'impronta decisa e personale.



## CLASSIC

TECHNIQUE  
Hand knotted

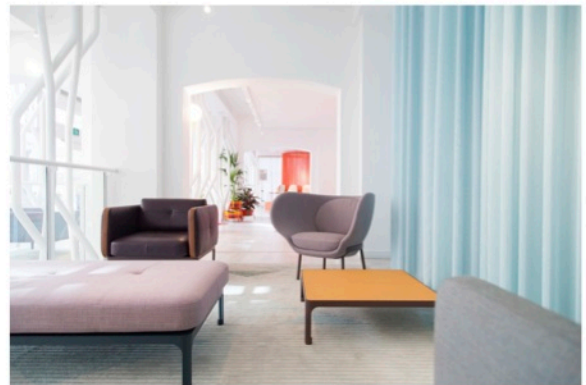
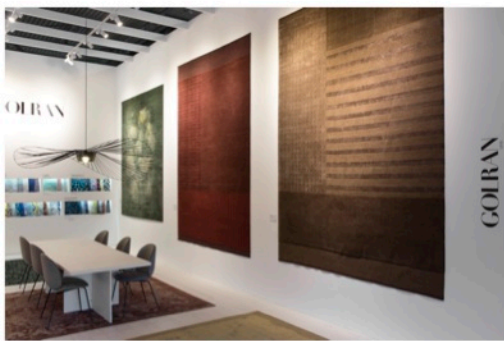
COMPOSITION  
Natural wool  
Silk

Handmade Iran, India, Turkey, China

The carpet presented on these pages are a sample of our collection.  
To see more of the collection - visit [www.golran.com](http://www.golran.com).

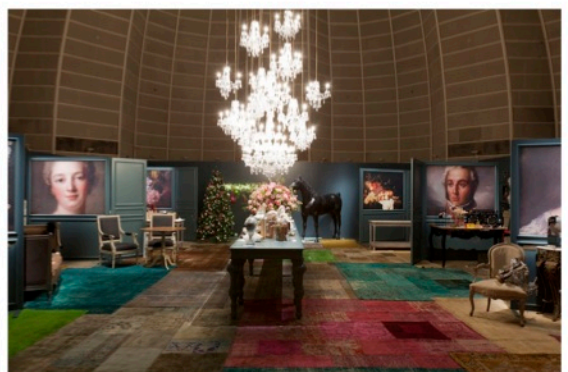
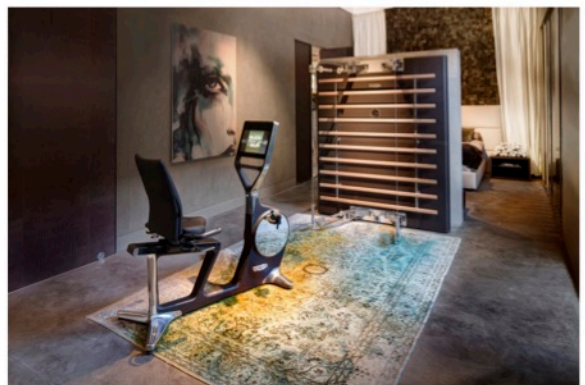
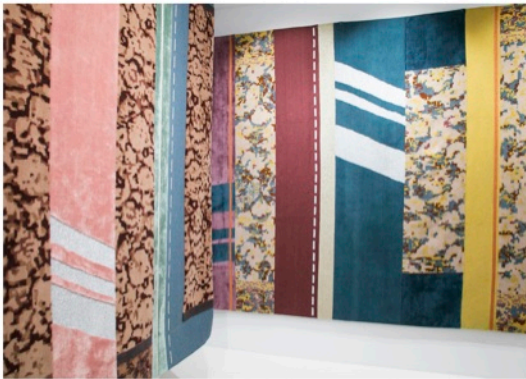
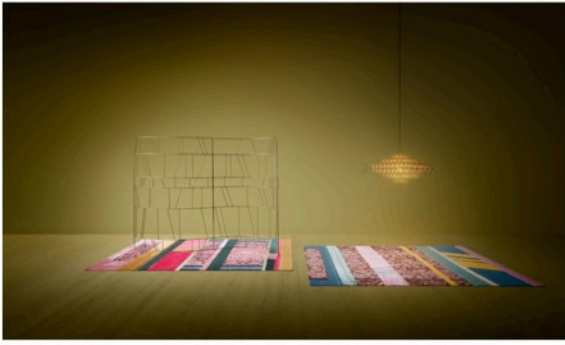


# PRODUCT PLACEMENT Various Collections



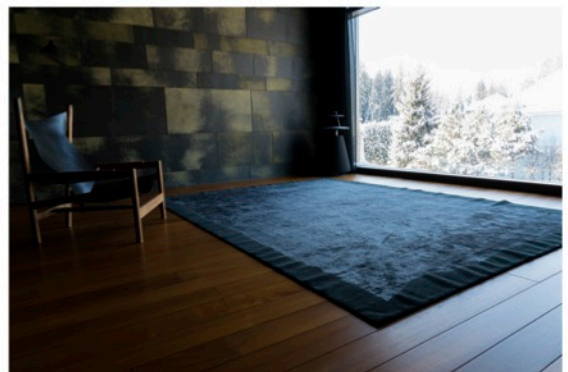


# PRODUCT PLACEMENT Various Collections





# PRODUCT PLACEMENT Various Collections





# OUR SERVICES :

## CUSTOM MADE

A service is also available, dedicated to the contract sector and ambitious private projects.

## PROJECTS / CONTRACT

Golran dedicates his know how to accompany the architects, interior designers and decorators in the accomplishment of the most prestigious and creative projects.

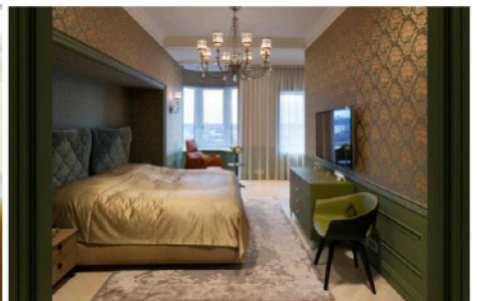
Example : *Conservatorium Hotel* in Amsterdam by Piero Lissoni, *Grand Hotel* in Milano by Dimore Studio, *Sergio Rossi's Showroom* Milano, *Hotel L'apogee* in Courchevel by India Mahdavi and Joseph Dirand, *W Retreat And Spa* on Vieques Island by Patricia Urquiola...



*Conservatorium Hotel* in Amsterdam  
by Piero Lissoni



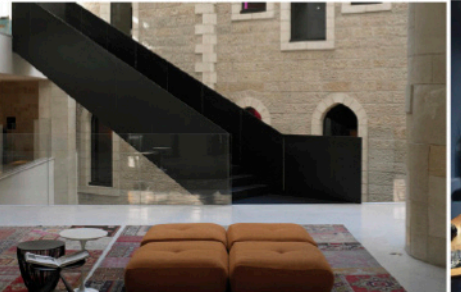
*Vitra Haus*, Basel



*Hotel L'apogée*, in Courchevel



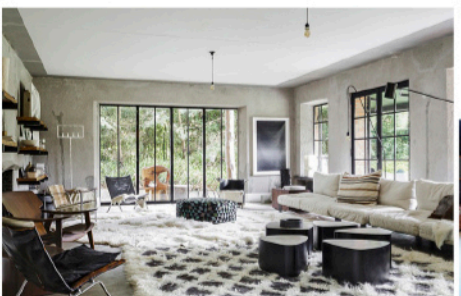
*Le Printemps* Paris



*Mamilla Hotel* in Jerusalem By Piero Lissoni



*Sergio Rossi Showroom*, in Milano



*Bea Items Showroom*, Knokke Design Bea Mombers



*Bally*, in Beverly Hills



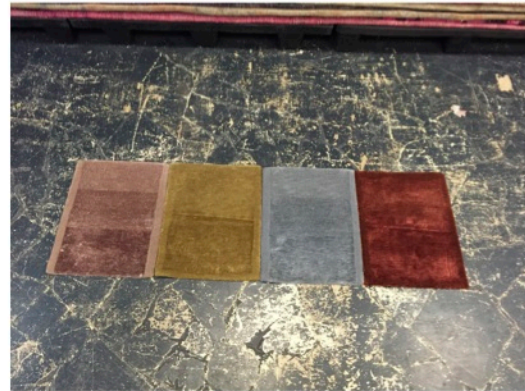
*Marna Rinaldi showroom* in London

# SAMPLING





# COLLECTIONS Custom made Hand made Nepal Sample and Products



**Construction:** 100 Knots

**Possible composition:**

100% Natural Wool Nepal  
 100% Bamboo silk Nepal  
 100% Pure silk China  
 Natural Wool & Bamboo silk Nepal  
 Natural Wool & Pure silk Nepal & China

**Backing:**  
 no backing

**Weight & thicknesses:** from 3 to 4 Kg / m2 \*

**Pile height:** from 7 mm to 20 mm \*

**Total weight:** from 3 to 4kg/ m2 \*

- depend from the quality
- 

**Sizes:**

240x170 cm

300x200 cm

305x245 cm

350x250 cm

400x300 cm

Diameter 250cm

Diameter 300cm

Width: up to : 600 cm

Length: up to : 800 cm

**Delivery time:**

4 months for standard size  
 4,5 to 6 months custom sizes ( depending from the size)

**Application:**

Rug appropriate for residential market or private areas in the hotel sector.

**Maintenance:**

Vacuum regularly  
 Occasional: Dry cleaning

**Installation:**

Plane, dry and clean surface

**Certifications:**

Will be provided

**Type of Design:**

Plain

With a design

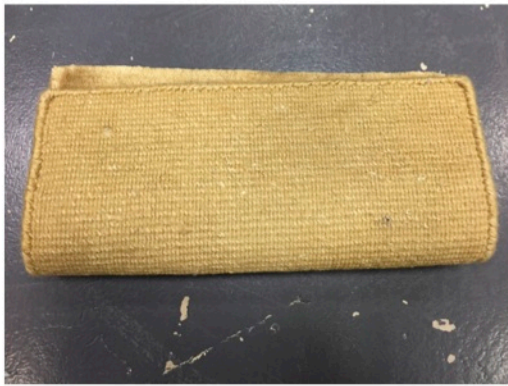
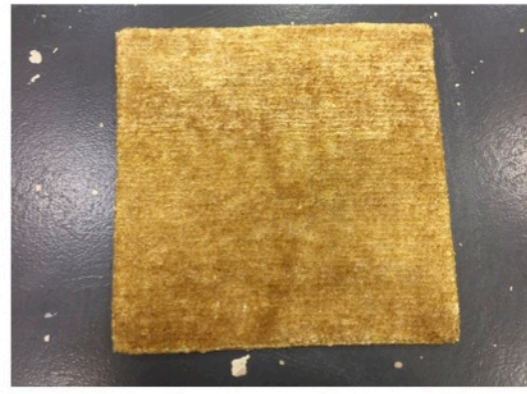
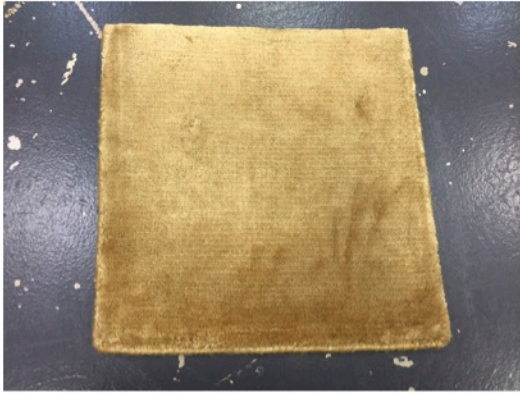
Any design provided

**Packing:**

The item can be folded, can just be rolled for the shipment



# COLLECTIONS Custom made Hand made India Sample and Product



**Construction:** 100 Knots

**Possible composition:**  
100% Bamboo silk India

**Backing:**  
no backing

**Weight & thicknesses:** 4. Kg / m<sup>2</sup>  
Pile height: 8 mm

**Total thicknesses:** 10 mm  
**Total weight:** 4kg/ m<sup>2</sup>

**Sizes:**

240x170 cm

300x200 cm

305x245 cm

350x250 cm

400x300 cm

Diameter 250cm

Diameter 300cm

Width: up to : 600 cm

Length: up to : 800 cm

**Delivery time:**

3,5 months for standard size  
( 4 months for Monsoon season or standard sizes)  
4,5 months custom sizes ( depending from the size)

**Application:**

Rug appropriate for residential market or private areas in the hotel sector.

**Maintenance:**

Vacuum regularly  
Occasional: Dry cleaning

**Installation:**

Plane, dry and clean surface

**Certifications:**

Will be provided

**Type of Design:**

Plain

With a design

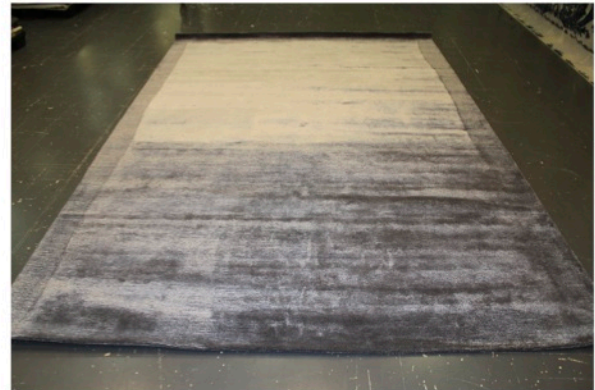
Any design provided

**Packing:**

The item can be folded, can just be rolled for the shipment



# COLLECTIONS Custom made Hund tufting India Sample and Product



**Construction:** Tufting frame

**Possible composition:**  
100% Natural Wool New Zeland  
100% Bamboo silk India  
Natural Wool & Bamboo silk

**Backing:**  
Cotton

**Weight & thicknesses:** 4.5 Kg / m<sup>2</sup>  
Pile height: 12 mm  
**Total thicknesses:** 15 mm  
Pile weight: 3,5 kg / m<sup>2</sup>  
**Total weight:** 4,5 kg/ m<sup>2</sup>

**Sizes:**  
240x170 cm  
300x200 cm  
305x245 cm  
350x250 cm  
400x300 cm  
Diameter 250cm  
Diameter 300cm  
Widht: up to : 450 cm  
Length: up to : 600 cm

**Delivery time:**

2,5 months for standard size  
(3,5 months for Monsoon season or standard sizes)  
3,5 months custom sizes

**Application:**

Rug appropriate for residential market or private areas in the hotel sector.

**Maintenance:**

Vacuum regularly  
Occasional: Dry cleaning

**Installation:**

Plane, dry and clean surface

**Certifications:**

Will be provided

**Type of Design:**

Plain  
With a design

**Packing:**

The item cannot be folded, can just be rolled for the shipment

# COLLECTIONS Custom made Hand Loom India Sample and Products



**Construction:** Hand Loom

**Possible composition:**

100% Natural Wool India  
100% Bamboo silk India  
Natural Wool & Bamboo silk India

**Backing:**  
no backing

**Thicknesses:** 6 to 7  
**Pile height:** 5 mm  
**Pile weight:** 3 kg/m<sup>2</sup>  
**Total weight:** from 4 kg/m<sup>2</sup>

**Sizes:**  
240x170 cm  
300x200 cm  
305x245 cm  
350x250 cm  
400x300 cm  
Diameter 250cm  
Diameter 300cm

Plain design:  
Up to 500x600 cm

Stripe design:  
Up to 500x500 cm

**Delivery time:**

2,5 months for standard size  
3,5 months custom sizes ( depending from the size)  
Minimum order 50 m<sup>2</sup>

**Application:**

Rug appropriate for residential market or private areas in the hotel sector.

**Maintenance:**

Vacuum regularly  
Occasional: Dry cleaning

**Installation:**

Plane, dry and clean surface

**Certifications:**

Will be provided

**Type of Design:**

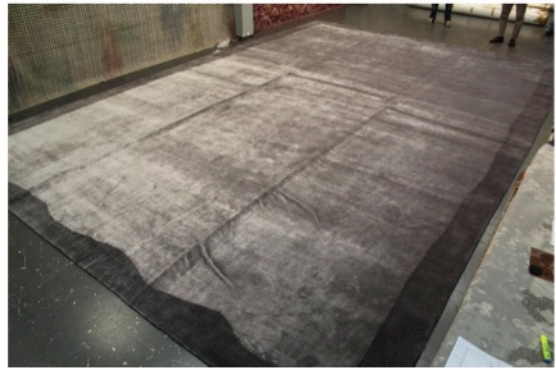
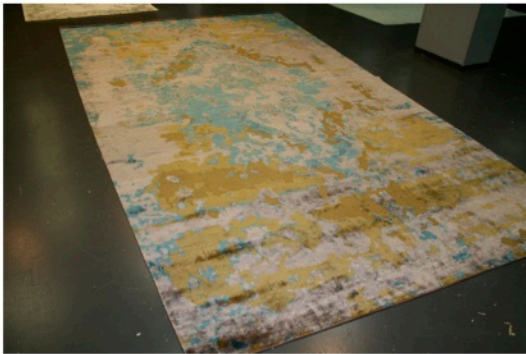
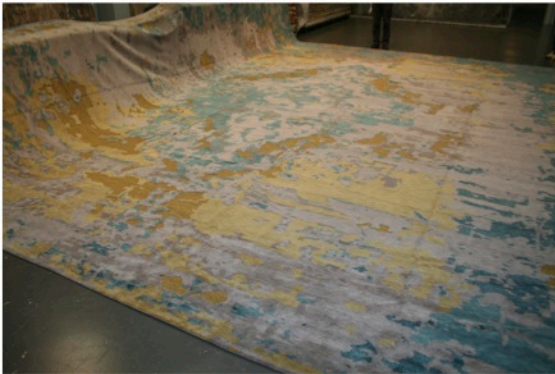
Plain  
With a design  
Any design provided

**Packing:**

The item cannot be folded, can just be rolled for the shipment.

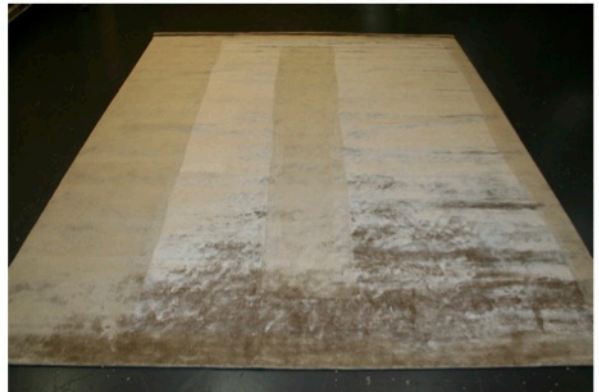
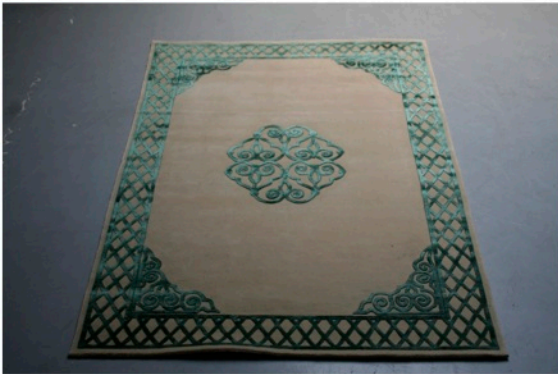


# PRODUCT PLACEMENT MEMORIES collection custom made





# COLLECTIONS & DESIGN Custom made Hand knotted



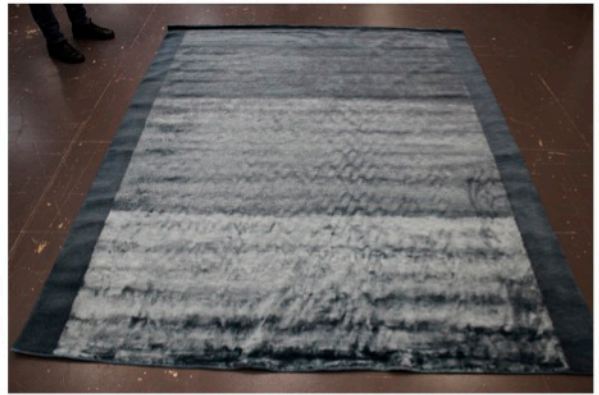
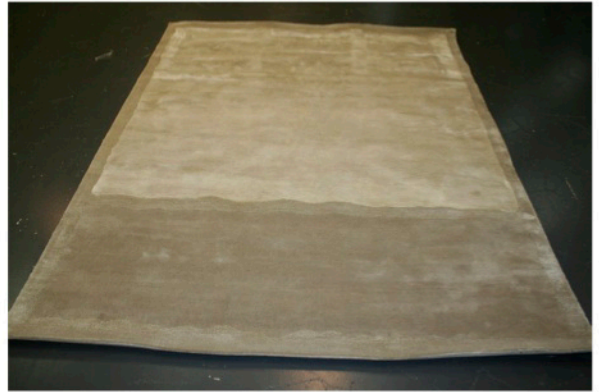
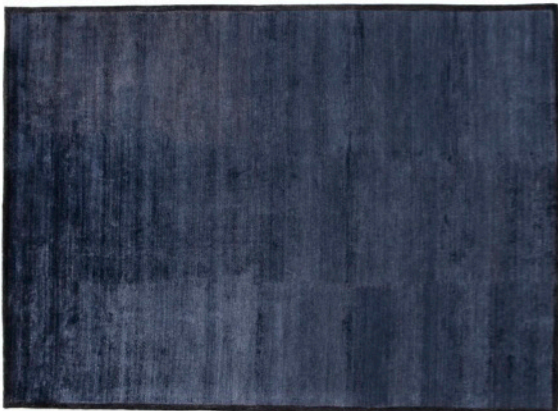
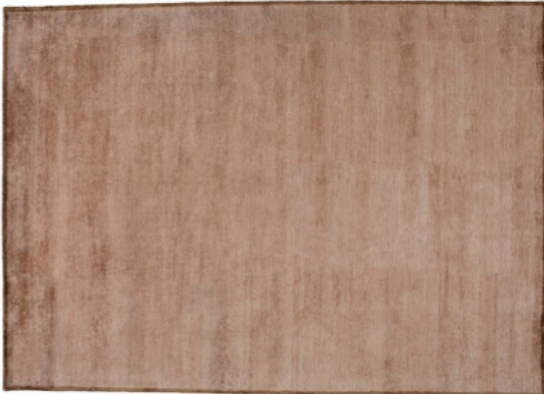
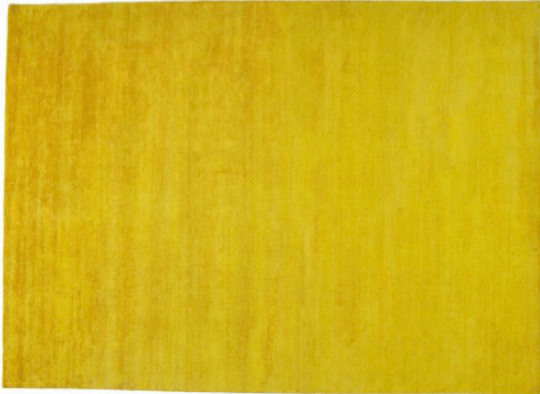


COLLECTIONS & DESIGN Custom made Hand Tufting with a design





COLLECTIONS & DESIGN Custom made Hand Tufting plain design





# OUR PRESTIGE

The most important magazines and papers of the design and decoration field, are the frequent relay of our prestige, thanks to our collaboration with our PR agency.

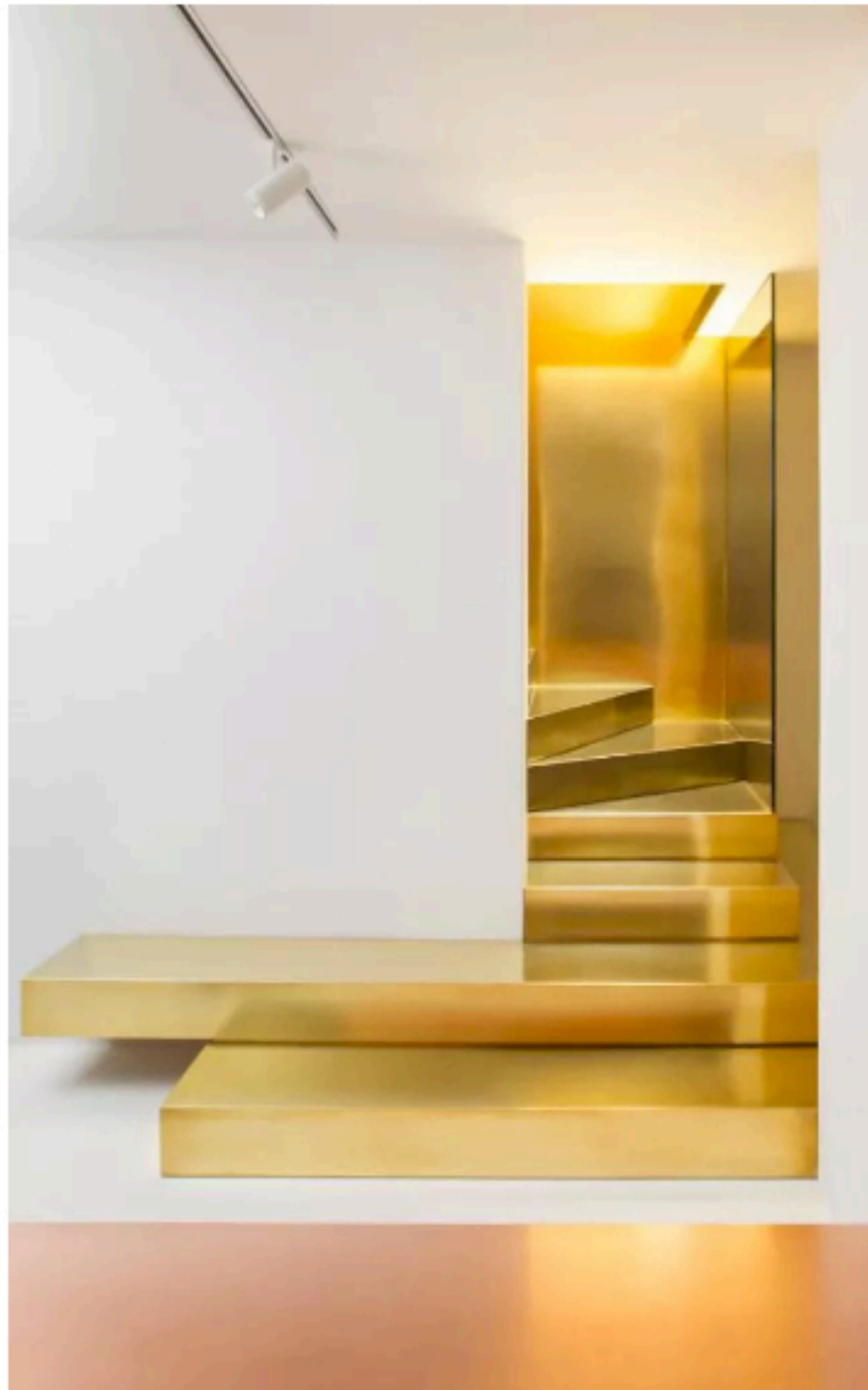


# Luxury Design

Our Experts | Pictures | Travel | Drinking & Dining | Jewellery | Motoring | Watches

🏠 > Luxury > Design

## Golran opens flagship showroom in Milan



Golran flagship store, Milan

By Bethan Ryder

11 OCTOBER 2016 • 4:07PM



**GOLRAN**  
1898

**THE GOLDEN  
FLAGSHIP**

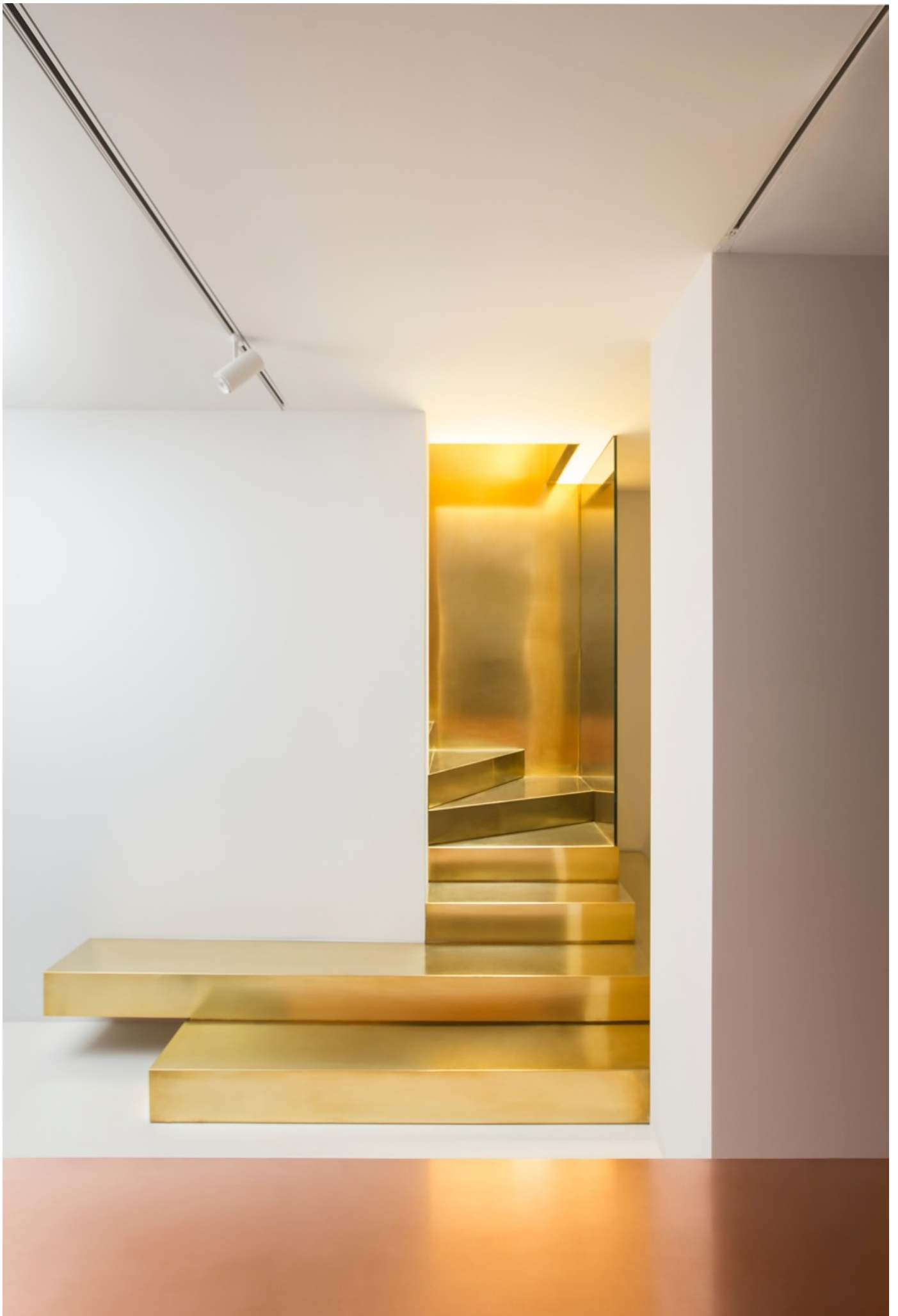






















## **CONTACTS**

### **FLAGSHIP STORE**

via Pontaccio 8/10  
20121 Milano  
[flagshipmilano@golran.com](mailto:flagshipmilano@golran.com)

### **HEADQUARTERS**

via Panzeri 11  
20123 Milano  
[info@golran.com](mailto:info@golran.com)  
+39 02 89 40 57 25

### **WEBSITE**

[www.golran.com](http://www.golran.com)

### **PRESS**

[press@golran.com](mailto:press@golran.com)

  Golran1898