

doog<sup>®</sup>  
world of details



2024

# THE COMPANY



Born in Portugal, Dooq is a design company dedicated to celebrate the luxury of living. Creating designs that stimulate the senses, which conceptual approach is inspired on the unexpected meeting of opposite.

Our studio focuses on an extensive research of details together with a vast iconographic research around art and design, creating an ever-evolving language that emphasizes first of all the small singularities.

We seek to find balance in contrasting concepts, creating pieces where feminine meets masculine, small meets large, soft meets solid and past meets present allowing the new to blossom.

Sensual materials like velvet, rope, straw and glass are combined with robust materials such as copper, marble, brass and wood expressing this duality in our studio's distinctive pieces.

Applying the technological expertise of a country leader in craftsmanship in combination with the creativity of great designers, allows to create objects with an uncensored aesthetic where each piece has its own reason to exist.

Dooq is pursuing elegance with audacity and devotion, crossing the boundaries between art and design.



LISBON  
PORTUGAL



## aimi, nusa, vertigo

Discover Aimi, our avant-garde chair and armchair designed to redefine elegance and comfort. Visually light yet exceptionally comfortable, Aimi boasts a remarkable design that effortlessly blends aesthetics with functionality. Nusa is our latest table collection, where Southeast Asian inspiration meets modern craftsmanship. Each table intricately weaves an ancient marqueterie technique, seamlessly blending two distinctive woods. Introducing Vertigo, our striking armchair inspired by the brutalist movement, where raw concrete aesthetics meet unparalleled comfort.

---







## oscar

Introducing Oscar, a bold reinterpretation of a classic armchair, drawing inspiration from modernist architecture. With clean lines and functional elegance, Oscar seamlessly marries timeless design with contemporary comfort.

---







## camelia

Introducing Camelia, a chair that gracefully embodies the essence of the Romantic period, channeling its ideals of passion and elegance. With its sensuous curves and intricate detailing, Aimee invites you to indulge in a sensory experience, capturing the romantic spirit in every sit.

---





## majorelle

Highly organic, the Majorelle collection evokes flowers of an imaginary garden. Informed by textures found in nature, the collection features a dappled surface made from resin soaked foam. Each of the six models is meticulously handmade, and available in any of the majorelle signature 4 shades, and one special combination per model.

---





## souk ecru

Created by the perfect combination of color, energy and shape, Souk mirrors reflect the influences of overwhelming and visually fascinating Souk markets in northern Africa with its vibrant fringes and earthy colors resembling typical macrame techniques. These soulful art pieces will make you travel to another time and place where your senses will surely feel aroused.

---





A modern wooden table with a curved top and a copper-colored cylindrical leg. The table is made of light-colored wood with a natural grain. The top is a thick, curved slab. The leg is a solid, cylindrical piece of copper. The table is shown from a side-on perspective, highlighting the curve of the top and the verticality of the leg.

## playing games

The essential shapes of these tables play between them in an alluring game of proportion and color which results in the creation of a perfect balance and tension of material and negative space. The absence of figurative shapes allows you to look at this piece from different angles and imagine various things.

---







**marlon**  
**by Pietro Franceschini**

When pure geometry meets soft curves, something sculptural and sensual comes out. A fine dialogue between oversized legs and clean lines takes place in this piece upholstered in mohair velvet. Marlon is edgy and elegant at the same time, letting the dilemma between 'contemporary' versus 'classical' fall apart.

---







## nouvelle vague

Exceptional in its craftwork, Nouvelle Vague is a center table that rejects traditional conventions in favor of experimentation. Round ceramic handmade pieces, painted in a unique craquele glaze are placed around a lacquered center top, creating a sense of movement that evokes the motion of the waves.

---





## L'anamour

L'anamour is a set of coffee and side tables, which complement and complete each other. The connection between them is as perfect as a poet-muse relationship, with emotions flying high and low but ultimately resulting in passionate adoration and deeper connection. Natural wood marquetry and exquisite travertine provide the perfect combination of carefree and refined style to L'anamour.

---







## odisseia

Odisseia chair embodies the aesthetic spirit of the space age, a new kind of discreet luxury and comfort inspired by a futuristic era created by new visual experiences and concepts of the future. This effortless but striking piece insinuates a luxe vision of the home of the future, as a new order of being.

---







## stick & stone

As a way to attain perfection, one must balance two opposite parts that complement each other and are mutually exclusive, meaning one cannot sustain without the other. This concept is behind Stick and Stone Center Tables, by combining two very different materials, the hard and raw travertine with the soft and warm oak, creating a visual dichotomy that projects perfect balance.

---





## braque

Celebrating a new invented reality, smooth and rough surfaces contrast with one another giving way to a new approach in shape and balance. Braque Side Table shows a torn and fragmented form, exposing the inner core of its base, which can be seen from a whole new perspective. This rebel approach took inspiration from Cubism and its influence in the representation of reality, leading to a deconstruction of shapes and revealing simultaneous view points at the same time.

---





## *l'unité*

*L'Unité* armchair is proportional and sculptural, perfectly made to the human scale. It gathers strong upholstered shapes lightly supported on elegant stands. A piece that excites the eye and imagination, inspired by modernist architecture's style and philosophy.

---





## kisho

Embodying a meeting point of western and eastern aesthetics, Kisho Sideboard combines a rich mix of refined artistic techniques, organic shapes, natural colors and textures showing evidence of the visually inspiring movement of Japanese Modernism, that is very much present in this piece and sets the tone to its raw but sophisticated design.

---





## odisseia

Odisseia chair embodies the aesthetic spirit of the space age, a new kind of discreet luxury and comfort inspired by a futuristic era created by new visual experiences and concepts of the future. This effortless but striking piece insinuates a luxe vision of the home of the future, as a new order of being.

---

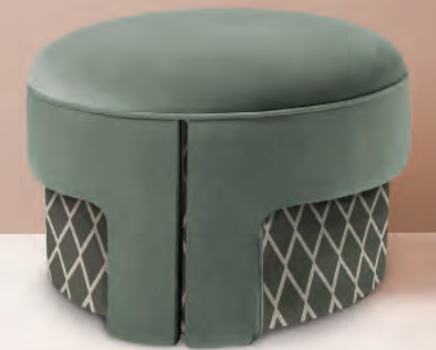




## **l'unité**

L'Unité pouf is proportional and sculptural, perfectly made to the human scale. It gathers strong upholstered shapes lightly supported on elegant stands. A piece that excites the eye and imagination, inspired by modernist architecture's style and philosophy.

---





## malibu round

Like a warm embrace, Malibu round couch welcomes you to stay within and relax. An elevated homage to the golden age of mid-century design and organic architecture, it radiates through its unusual proportions and strong curves with softness and fine detailing resulting in a must-have piece.

---





## **bonnie and clyde**

Sensual curves and crisp lines embody the perfect combination of beauty and danger, much like the Hollywood legends Bonnie and Clyde. It is impossible to feel estranged with this piece which will attract you and never let go.

---









## havana & traje de luces

Celebrating a *one night affair* in the Caribbean paradise, Havana armchair insinuates the pleasures of a bohemian lifestyle with its flirtatious and see through shapes, reminding us of delicate lace undergarments. Reflecting the warm tropical feeling of Havana, this armchair invites you to frolic, if only for a one night adventure.

---

Traje de Luces bar cabinet encompasses an exploration of delicate forms and a richness in details found while travelling through the south of Spain. The delicate silhouette allures you into looking inside. The unexpected feelings of surprise and passion are immediate and strong. Elegance, tradition and superior craftsmanship combined into a perfect fusion of materials to entice you continuously.











## playing games

The essential volumes of these tables play between them in an alluring game of proportion and color which results in the creation of a perfect balance and tension of material and negative space. The absence of figurative shapes allows you to look at this piece from different angles and imagine various interpretations.

---









## malibu & dolce vita

Like a warm embrace, Malibu armchair welcomes you to stay within and relax. An elevated homage to the golden age of mid-century design and organic architecture, it radiates through its unusual proportions and strong curves with softness and fine detailing resulting in a must-have piece.

Dolce Vita console transports you to a time of greatness and opulence which we can still find very much alive in Rome. Rich materials take the form and proportion of ancient structures, connecting them to a modern functionality and purpose.









## la folie

With voluptuous curves and perfect poise, La Folie exalts passion and fantasy as if you were in a burlesque show at Moulin Rouge. Let yourself be drawn by this flirtatious feeling of sensuality and a touch as smooth as silk.

---









## souk

Created by the perfect combination of color, energy and shape, Souk mirrors reflect the influences of overwhelming and visually fascinating Souk markets in northern Africa with its vibrant fringes and earthy colors resembling typical macrame techniques. These soulful art pieces will make you travel to another time and place where your senses will surely feel aroused.

---





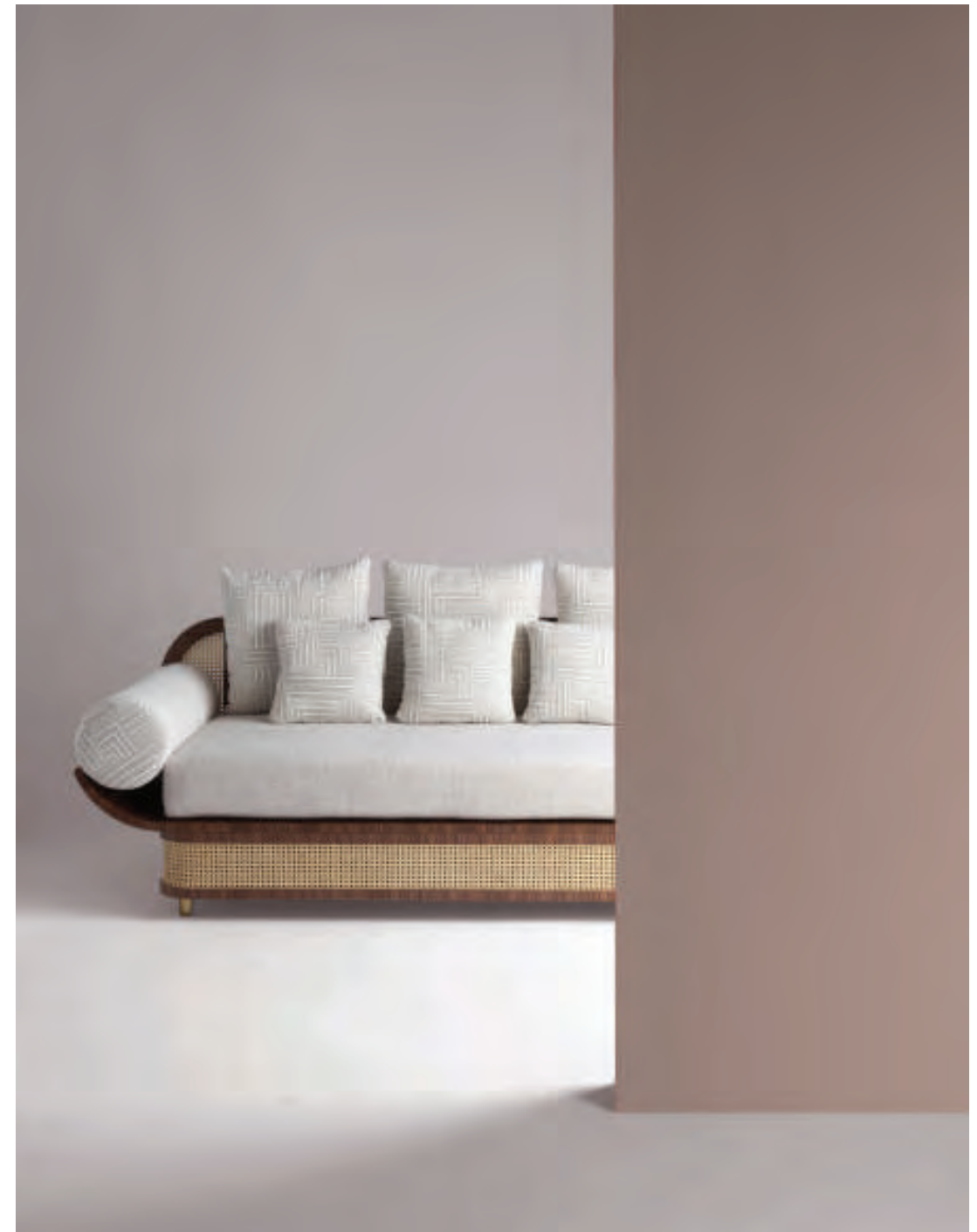




## majestic

Well fit for a king, Majestic makes no compromise on sleekness and elegance with its compact curves and see-through straw. With a shape inspired by Indochinese culture this piece combines luxury and eclectic spirit creating a strong fashionable impression.

---





## metropolis & single man

Wandering through Chicago's downtown one cannot help but to go back to a time when the desire to turn life into art was paired with a lust for luxury and style. Therefore, Metropolis Sideboard was created embodying the elegance, fine craftsmanship and rich materials of Art Deco translated into a dichotomy in which opposites attract each other: soft curvy shapes combine with crisp lines to create a visually balanced object.

---

Setting its origin in sunny California's mid-century influence, Single Man's takes you back to a time when elegance was obtained through the use of simplicity, comfort and fine materials. Using essential geometric and organic shapes, this object creates a strong emotional connection with the user. A singular piece for a singular individual.









## alma & memphis

As any admirer would experience gazing at its muse, it is impossible not to feel enchanted and almost hypnotized by the refined, sensual lines and the delightfully charming soul of Alma chair. In a piece that combines classic and modern aesthetics we can find a certain harmonic gracefulness paired with an intimate voluptuousness that can embrace you and surprisingly break the frontiers of sophistication and elegance.

---

Spring in Milan and the smell of coffee is in the air. While strolling through the city streets we stumble upon a hypnotizing Memphis Group exhibition which sweeps us of our feet by its over the top design and irreverence. This was the background of Memphis table's creation. A dining table designed to question the sometimes imposed "good taste" and good functional design with a disregard of typical shapes and an intentional imbalance created by the bottom half spheres which seem too small to even the solid top structure. This irreverent and stylish table is still functional but may well live on its own as an object of cult.









## berlin & panorama

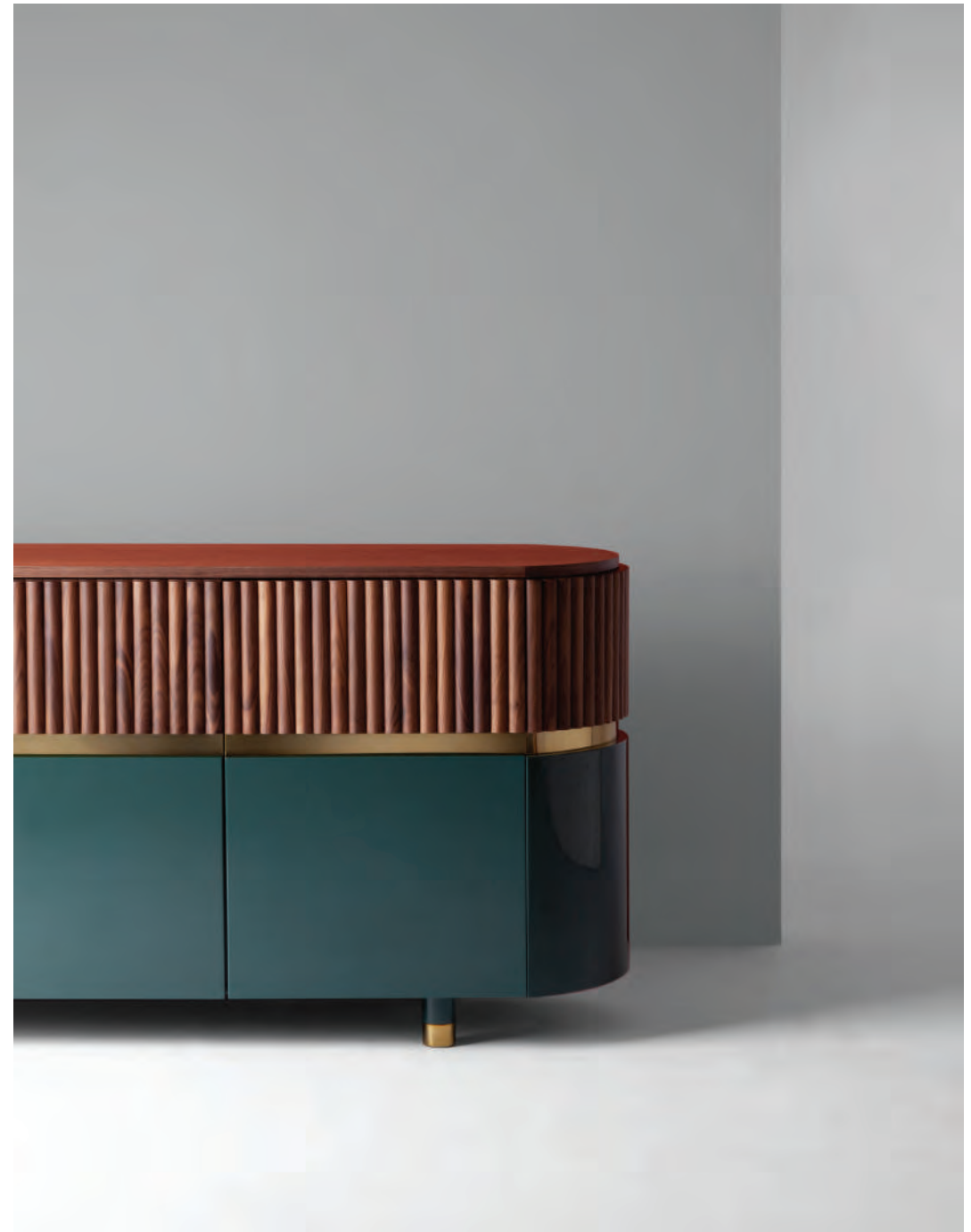
Like its name suggests, Berlin sideboard is inspired by Bauhaus, a wave of thought that is impossible to overlook when passing through the streets of Berlin. In a more down to earth piece, clean lines and a certain absence of excessive ornamentation result in a harmony between design and function.

---

Solid and concrete like in appearance, Panorama is an ode to monumental proportions and impacting visual lines impossible to overlook in a voyage amongst Eastern Europe's architectural legacy. Still, the strong lines are attenuated by softly gathered upholstery that will provide you maximum comfort.









## egoísta

With its name being the direct translation of "selfish" in Portuguese, this armchair revolves around its own universe. Within a refined, elegant and distinctive frame, resembling the narrow and close streets of Naples, this armchair will make you feel powerful and ruler of your space.

---

