

## DORSEY | SUSPENSION

Dorsey suspension light, the jazz trumpet player Tommy Dorsey inspires this Mid-century modern light design, that's another Delight-FULL's design that embodies all the 50's musical culture with Jazz reference. Allying the best of ancient techniques with the modern expertise of high-craftsmanship, Dorsey is a handmade brass chandelier, with aluminum lamp shades. The telescopic tubes that make up the body boast a gold-plated finish, while the lamp shades and center are lacquered a matte black. It is a unique chandelier, perfect for a mid-century hotel lobby, or an art deco-inspired restaurant. It can also be used in private residences, especially as a dining room lighting fixture.

### MATERIALS

BODY: Brass

SHADE: Aluminum

### WEIGHT

Approx. 15 kg | 33 lbs

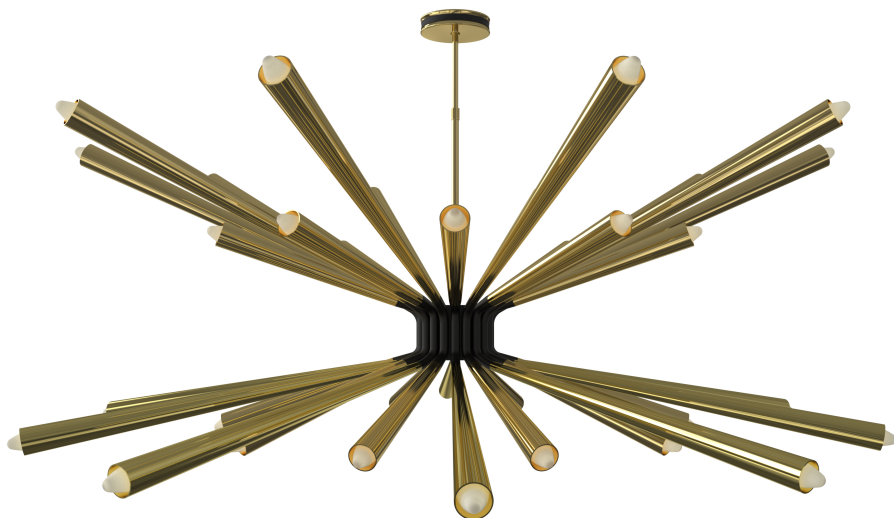
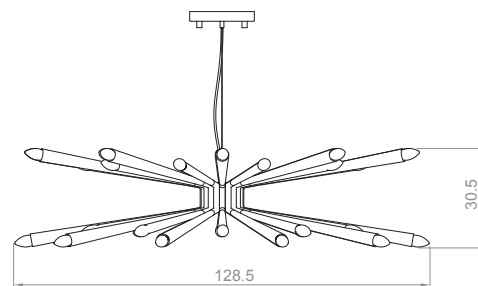
### BULBS

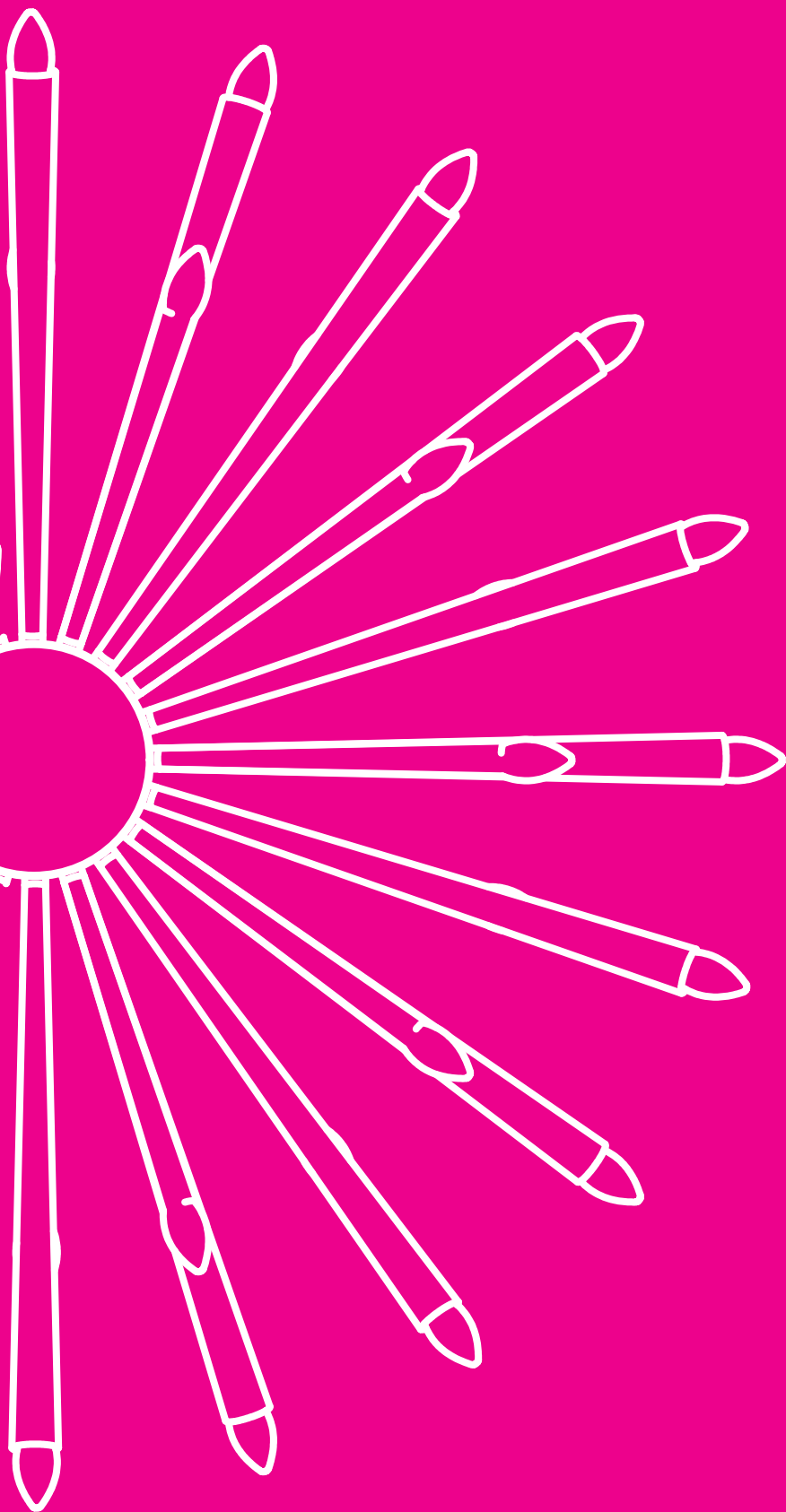
40 x E14 Bulbs (included) max 40W per bulb  
(E12 for USA not included)

### DIMENSIONS

HEIGHT: 12" | 30.5 cm

DIAMETER: 50.5" | 128.5 cm





## DORSEY | SUSPENSION

### PACKAGE

(Cardboard Box)

WIDTH: X" | X cm

HEIGHT: X" | X cm

DEPTH: X" | X cm

PACKAGE VOLUME: X m<sup>3</sup>

### Bulbs

40 x E14 Bulbs (included) max 40W per bulb

(E12 for USA not included)

### BULB STANDARD

LIGHT TECHNOLOGY: HALOGEN

POWER: 4W

LUMENS: 360LM

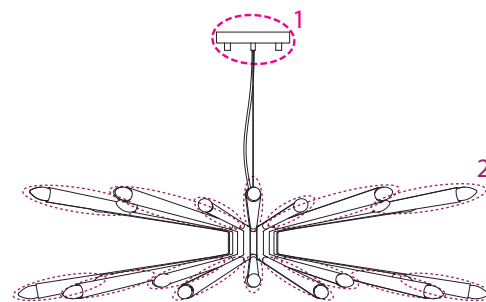
COLOUR TEMPERATURE: 2700K

### SHADE

DESCRIPTION

CANOPY

SHADES



### CANOPY

N°1 - 1 unit

HEIGHT: 1.18" | 3 cm

DIAMETER: 7.8" | 20 cm

### SHADES

N°2 - 20 units

HEIGHT: 10.4" | 26.5 cm

WIDTH: 21.2" | 54 cm

Shade with Bulbs 