

COMB



COMB

suspension lamp

230V / 50Hz E27/1x 20W LED

120V / 60Hz E26/1x15W LED

35 lb | 16 kg

30x30x30 in
75x75x75 cm
0,42 m³

59" / 1,5m



COMB I

suspension lamp

230V / 50Hz E27/1x 20W LED

120V / 60Hz E26/1x15W LED

35 lb | 16kg

30x30x30 in
75x75x75 cm
0,23 m³

59" / 1,5m



COMB WALL

wall lamp

230V / 50Hz E27/1x 20W LED

120V / 60Hz E26/1x15W LED

11 lb | 5 kg

14x10x22 in
35x25x56 cm
0,05 m³

59" / 1,5m



COMB FLOOR

floor lamp

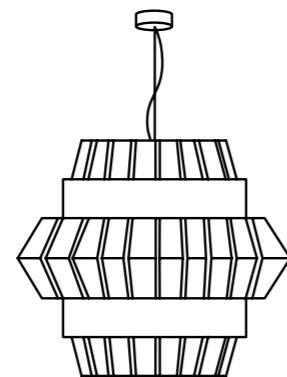
230V / 50Hz E27/1x 20W LED

120V / 60Hz E26/1x15W LED

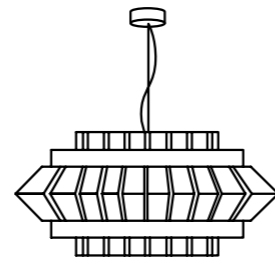
30lb |14 kg

24x24x70 in
60x60x177cm
0,65 m³

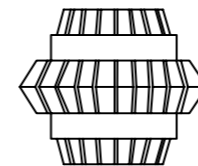
59" / 1,5m



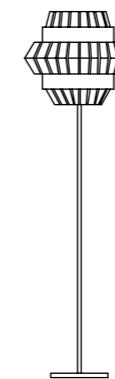
Ø: 29" / 74cm
h: 24" / 60cm



Ø: 30" / 75cm
h: 14" / 35cm



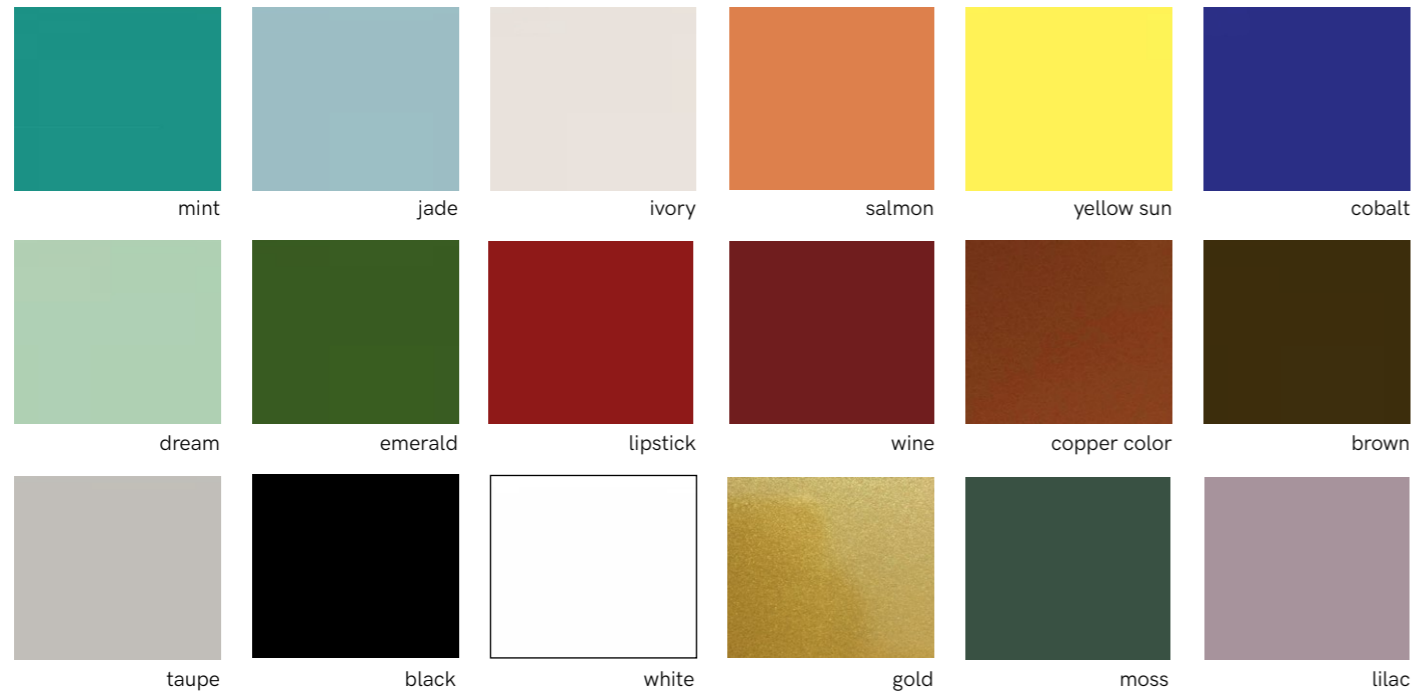
w: 15" / 37cm
d: 5" / 13cm
h: 13" / 34cm



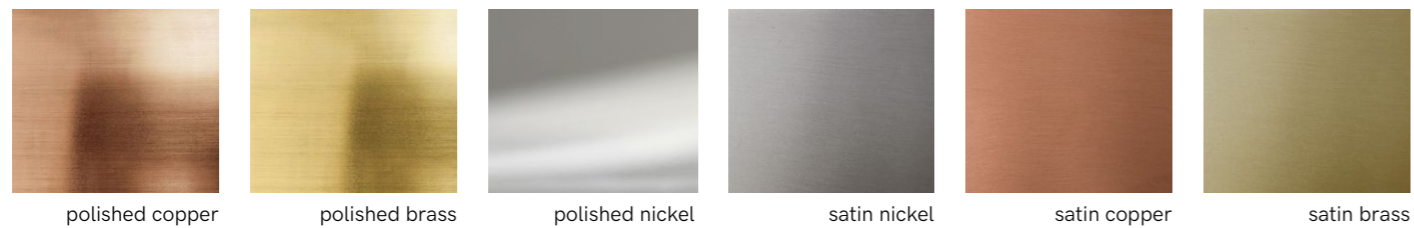
Ø: 21" / 54cm
h: 69" / 175cm

FINISHINGS

lacquered metal



polished and satin metal available only for rings



POLISHED AND SATIN METAL PIECES
 this product is handmade; any small stain or roughness is a feature of the product, not a defect.

cup cup color matches the lamp



ords

Suspension lamps

Standard cord length is 1,5m.

Standard cord options

Brown textile cord (standard for all lamps except black ones)



Black textile cord (standard for all black lamps)



Transparent rubber cord (under request)



* You may choose from the above with no extra charge.

Additional length is available for suspension lamps, on extra charge.

Non-standard cord options

Yellow textile cord on extra charge



Black and white textile cord on extra charge



Red and black textile cord on extra charge



Floor lamps

Standard cord is in transparent rubber, for all models and finishes, with a length of 1,5m.

Cord options

White rubber cord *no surcharge*

Black rubber cord *no surcharge*

Black textile cord *on extra charge*

USA plug *on extra charge*