



*Organic  
Line*

Hanafy<sup>®</sup>  
COLOURS PIGMENTS  
PIGMENT PALETTE

# HANAFY LIP PIGMENT LINE



## CORAL N°1

### WARM PINK

Intense warm tone without reddishness. Bright but gentle. On cold shaded lips remains naturally pink after healing; on warm lips this pigment may turn to salmon shade.

For golden blondes and redheads.

N° 1



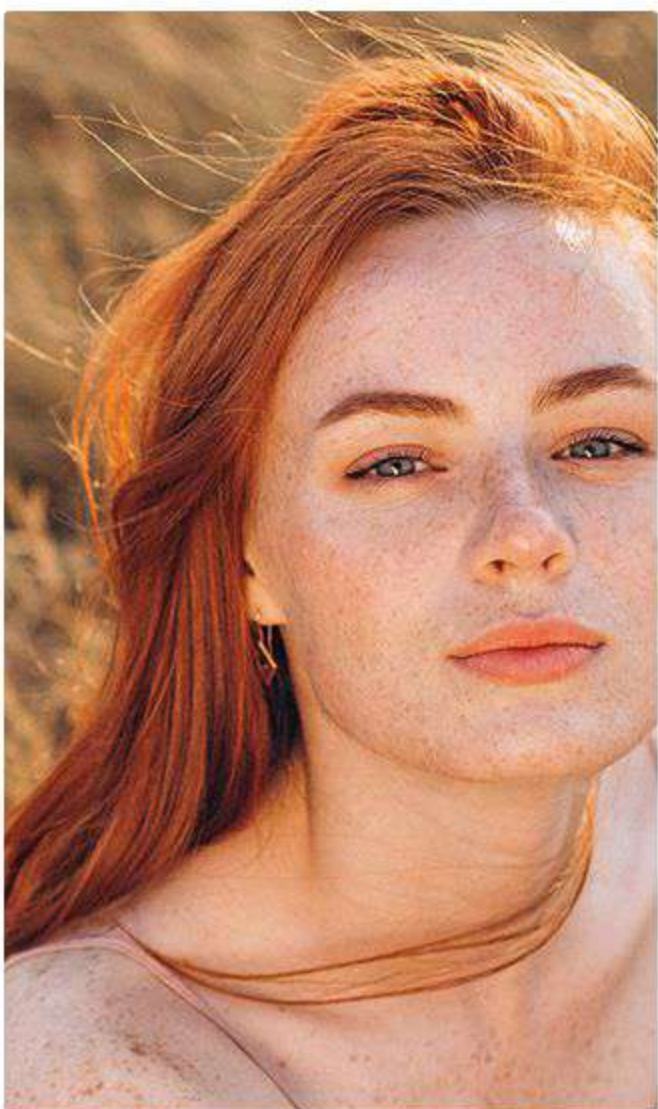
## ROSE N°2

### NATURAL PINK

Soft and gentle.

Suits almost everyone.

N° 2



## PEACH N°3

### PEACHY NUDE SHADE

Works well as a standalone pigment colour or a shade modifier.

N° 3



## CHERRY N°4

### JUICY RIPE CHERRY

Rich and vivid shade.

Good for brown-eyed. Especially good for 40+ ladies.

N° 4



## STRAWBERRY N°5

### THE REDDEST SHADE

Ripe strawberry colour. Warm and bright

For those who prefer intensive red colours. Perfect for cool toned (oriental and African) lips.

N° 5



## RASPBERRY N°6

### COOL SHADE OF OVERRIPE RASPBERRIES

Frosty freshness!

For cold blondes. Use with caution on vascular lips.

N° 6

# HANAFY LIP PIGMENT LINE



## CRANBERRY N°7

### RICH BERRY SHADE

Cool and noble tone. As bright as N°4, but cooler.

Suitable for 40+ ladies and anyone who is fond of bright cool shades.

N° 7



## RED EARTH N°8

### RED-BRICK SHADE WITH A CLEAR BROWNISH TINGE

Heals naturally, without reddishness.

For those who like terracotta effect on their lips.

N° 8



## SOFT BEIGE N°9

### DELICATE BEIGE-PINK SHADE

Very natural, calm, nude.

Suits almost everyone.

N° 9



## BARBERRY N°10

### GENTLE, CALM AND NOBLE BERRY COLOUR

Belongs to the ranges of warm pigments with slight terracotta shade, but lighter and warmer than N°8.

N° 10

# HANAFY BROW PIGMENT LINE



## **GOLDEN BLOND N°1**

### **WHEATEN GOLD**

The lightest in the palette.

For natural blondes with pale skin and blue eyes.

N° 1



## **DARK BLONDE N°2**

### **BLONDE**

The range is from medium blonde to dark blond. Yellow base.

For medium and dark blondes with cool or light eyes. Can be used as a concealer to cover pink eyebrows.

N° 2

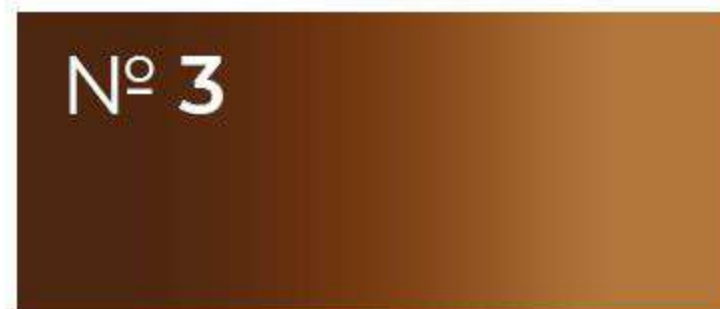


## **MILK CHOCOLATE N°3**

### **WARM BROWN**

For blondes and brown-haired ladies with warm eye colours. Often used for mixing with other shades.

N° 3



## **DARK BRUNETTE N°4**

### **SATURATED BROWN**

Dark chocolate colour, yellow base.

For brunettes with brown eyes, perfect for work with eyelids.

N° 4



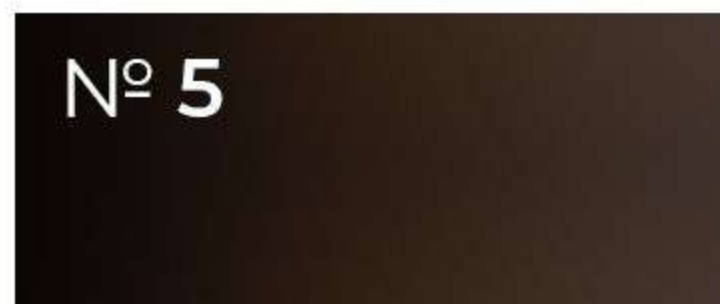
## **BLACK BROWN N°5**

### **THE DARKEST EYEBROW SHADE**

Can also be used for eyelids.

Only for warm skin, for brunettes. Mixes well with other colours.

N° 5



# HANAFY EYELID PIGMENT LINE



## CHARCOAL N°6

### SMOKY GRAY

Can be used for any technique.

For cool eyes.

N° 6



## DEEP BLACK N°7

### DEEP BLACK

Blacker than black,  
doesn't turn blue.

For lash enhancement  
and winged eyeliner.

N° 7



## BLACK ROSE N°8

### PURPLE

Eggplant colour. Can be used  
for any technique.

For brown and green eyes.

N° 8



## RUSSIAN FOREST N°9

### GREEN SHADE

Bright, decorative.

Eyelid shading for brown and  
green eyes.

N° 9

# HANAFY HAIRSTROKES PIGMENT LINE



## N1 HAIRSTROKES BLONDE

### BLONDE

Light brown. Used as main colour.

For blonde and brown-haired women with cold and neutral skin tone.

Nº 1



## N2 HAIRSTROKES MEDIUM

### MEDIUM

Medium warm chocolate shade for hairstroke technique. It can be used as main colour.

For brown-haired women with warm eye colour.

Nº 2



## N3 HAIRSTROKES DARK BRUNET

The warmest in the palette.

For brunettes and brown-haired women with dark brown eyes. Also can be mixed with lighter shades to create accents and shadows.

Nº 3

# HANAFY EYELID AND BROW PIGMENT LINE

*by Olga Kostinetskaya*



## EYES N°1

### YELLOW BASED MEDIUM BROWN SHADE

Very warm.

Suitable for working with light-shaded eyes.

N° 1



## EYES N°2

### RED BASED MEDIUM BROWN SHADE

Suitable for clients with an iris varying from green to chocolate colour. For eyelid skin with large amounts of melanin.

N° 2



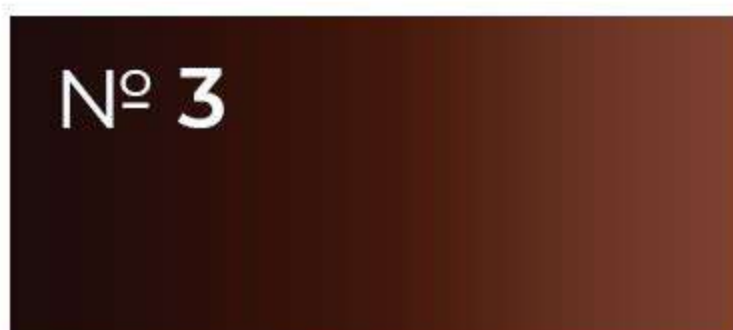
## EYES N°3

### RED BASED DEEP BROWN SHADE

Very attractive. Mainly used to create deep shading.

Suitable for light and dark eyes.

N° 3



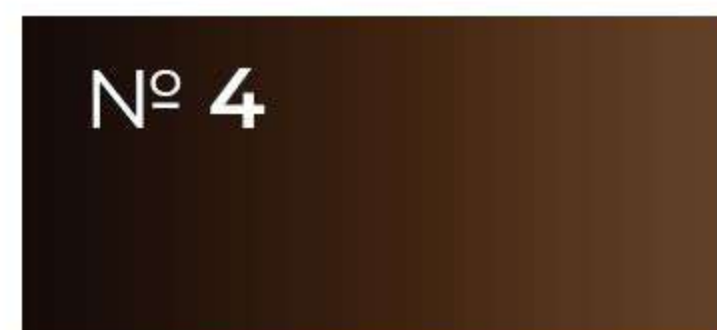
## EYES N°4

### RED BASED BLACKENED BROWN SHADE

The darkest in the set.

Suitable for light eyes as an alternative to black and gray.

N° 4



# HANAFY AREOLA PIGMENT LINE

*by Irina Maximova*

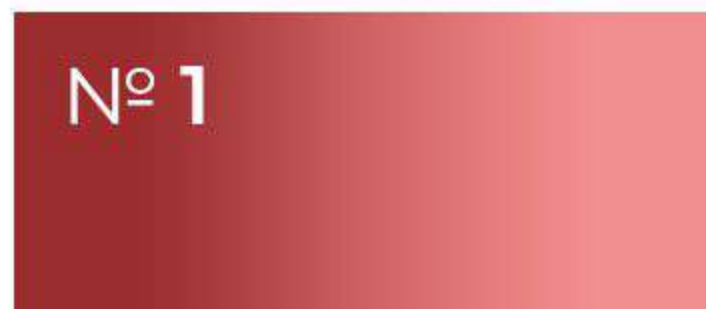


## AREOLA N°1

### BEIGE-PINK PIGMENT

One of the most popular shades for areolas.

For Slavic-type skin.



## AREOLA N°2

### WARM SHADE FOR AREOLA

Also can be used to cover vitiligo on Fitzpatrick skin types 4-5.



## AREOLA N°3

### MEDIUM BROWN PIGMENT TONE FOR AREOLAS

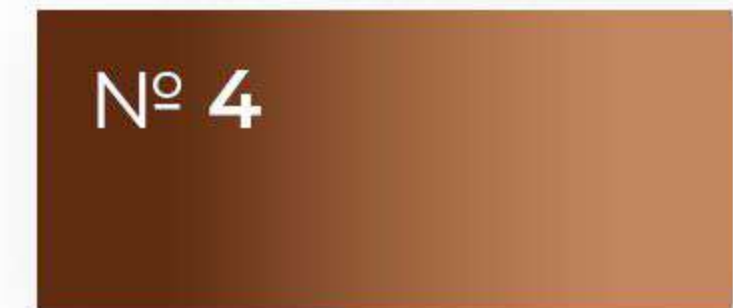
Also can be used to cover vitiligo on Fitzpatrick skin types 3-4.



## AREOLA N°4

### WARM TONE FOR THE AREOLAS, DARKER THAN THE AREOLA N°3 SHADE

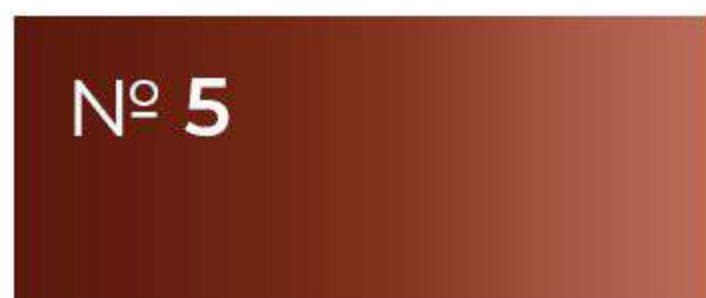
Applicable for camouflage of vitiligo, scars and areolas dermopigmentation on Fitzpatrick skin types 4-5.



## AREOLA N°5

### RED BASED WARM DARK TONE

Can be used both separately and for detailed work during the areola reconstruction.





# HANAFY CAMOUFLAGE PIGMENT LINE

*by Irina Maximova*



## CAMOUFLAGE N°1

**THE LIGHTEST CAMOUFLAGE PIGMENT FOR COOL TONED SKIN (FITZPATRICK SKIN TYPES 1-2)**

Suitable for correction of scars and variously pigmented striae. Can be used to lighten the upper lip to give it more volume visually (lip light effect).

N° 1



## CAMOUFLAGE N°2

**LIGHT SHADE FOR A WARMER SKIN TONE**

Correction of scars and variously pigmented striae. Can be used to lighten the upper lip to give it more volume visually (lip light effect).

N° 2



## CAMOUFLAGE N°3

**LIGHT PINK SHADE**

Can be used on areolas, also good at adjusting green shades.

N° 3



## CAMOUFLAGE N°4

**WARM BEIGE SHADE FOR FITZPATRICK SKIN TYPES 3-4**

For coverage of vitiligo and various pigmentation. For scars correction and areolas camouflage.

N° 4



## CAMOUFLAGE N°5

**COOL BEIGE SHADE FOR FITZPATRICK SKIN TYPES 3-4**

Vitiligo and areolas camouflage, correction of various pigmentation and scars.

N° 5



## CAMOUFLAGE N°6

**WHITE COLOUR**

Suitable for lips volumizing and retouch; can be used to correct skin pigmentations and dermopigmentation of areolas.

N° 6

# HANAFY CORRECTOR LINE + THINNER



## CORRECTOR N°1

### RICH ORANGE SHADE

Suitable for eyebrows and lips. Warms up cold pigments and overlaps low-quality permanent makeup.

N° 1



## CORRECTOR N°2

### YELLOW-ORANGE SHADE

Lightens and neutralizes lilac and purple colours. Covers low-quality eyebrow permanent makeup. Suitable for work with dark ethnic lips.

N° 2



## CORRECTOR N°3

### OLIVE SHADE

Neutralizes pink, salmon and red colours. Can be used as a base for the main colour as well as independently.

Suitable for use on the eyelids.

N° 3



## THINNER

### HANAFY PIGMENT THINNER

Universal thinner used for reducing colour concentration. It also serves for creating shading effects on eyebrows, lips and eyelids. Applicable for making mixes.