



*Organic
Line*

Hanafy[®]
COLOURS PIGMENTS
PIGMENT PALETTE

HANAFY LIP PIGMENT LINE



CORAL N°1

WARM PINK

Intense warm tone without reddishness. Bright but gentle. On cold shaded lips remains naturally pink after healing; on warm lips this pigment may turn to salmon shade.

For golden blondes and redheads.

N° 1



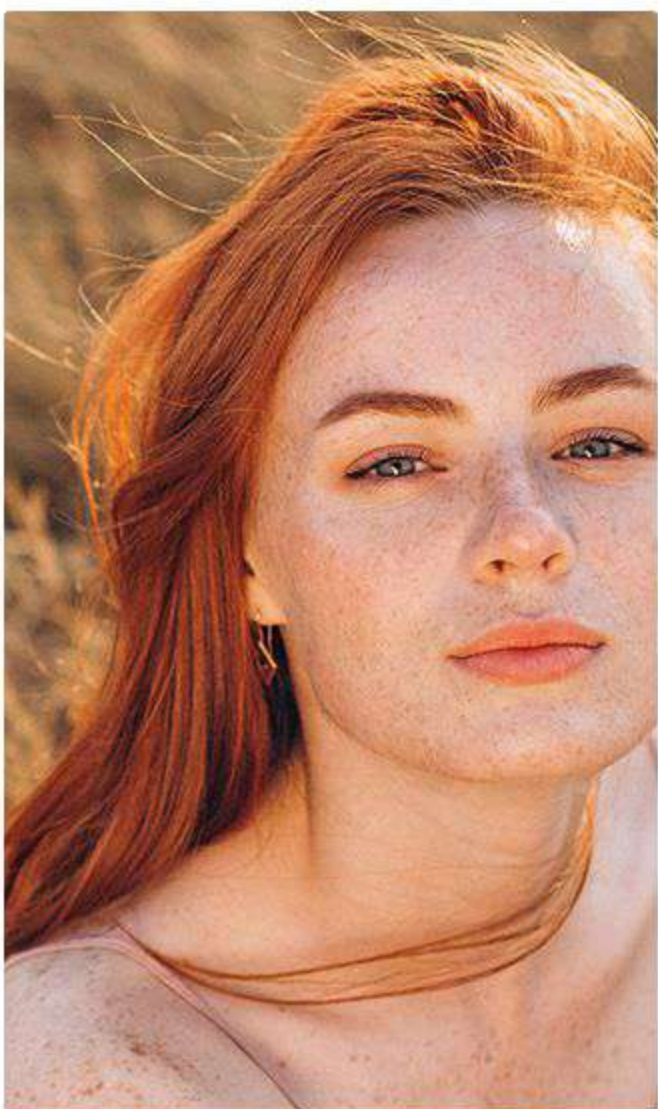
ROSE N°2

NATURAL PINK

Soft and gentle.

Suits almost everyone.

N° 2



PEACH N°3

PEACHY NUDE SHADE

Works well as a standalone pigment colour or a shade modifier.

N° 3



CHERRY N°4

JUICY RIPE CHERRY

Rich and vivid shade.

Good for brown-eyed. Especially good for 40+ ladies.

N° 4



STRAWBERRY N°5

THE REDDEST SHADE

Ripe strawberry colour. Warm and bright

For those who prefer intensive red colours. Perfect for cool toned (oriental and African) lips.

N° 5



RASPBERRY N°6

COOL SHADE OF OVERRIPE RASPBERRIES

Frosty freshness!

For cold blondes. Use with caution on vascular lips.

N° 6

HANAFY LIP PIGMENT LINE



CRANBERRY N°7

RICH BERRY SHADE

Cool and noble tone. As bright as N°4, but cooler.

Suitable for 40+ ladies and anyone who is fond of bright cool shades.

N° 7



RED EARTH N°8

RED-BRICK SHADE WITH A CLEAR BROWNISH TINGE

Heals naturally, without reddishness.

For those who like terracotta effect on their lips.

N° 8



SOFT BEIGE N°9

DELICATE BEIGE-PINK SHADE

Very natural, calm, nude.

Suits almost everyone.

N° 9



BARBERRY N°10

GENTLE, CALM AND NOBLE BERRY COLOUR

Belongs to the ranges of warm pigments with slight terracotta shade, but lighter and warmer than N°8.

N° 10

HANAFY BROW PIGMENT LINE



GOLDEN BLOND N°1

WHEATEN GOLD

The lightest in the palette.

For natural blondes with pale skin and blue eyes.

N° 1



DARK BLONDE N°2

BLONDE

The range is from medium blonde to dark blond. Yellow base.

For medium and dark blondes with cool or light eyes. Can be used as a concealer to cover pink eyebrows.

N° 2



MILK CHOCOLATE N°3

WARM BROWN

For blondes and brown-haired ladies with warm eye colours. Often used for mixing with other shades.

N° 3



DARK BRUNETTE N°4

SATURATED BROWN

Dark chocolate colour, yellow base.

For brunettes with brown eyes, perfect for work with eyelids.

N° 4



BLACK BROWN N°5

THE DARKEST EYEBROW SHADE

Can also be used for eyelids.

Only for warm skin, for brunettes. Mixes well with other colours.

N° 5

HANAFY HAIRSTROKES PIGMENT LINE



N1 HAIRSTROKES BLONDE

BLONDE

Light brown. Used as main colour.

For blonde and brown-haired women with cold and neutral skin tone.

Nº 1



N2 HAIRSTROKES MEDIUM

MEDIUM

Medium warm chocolate shade for hairstroke technique. It can be used as main colour.

For brown-haired women with warm eye colour.

Nº 2



N3 HAIRSTROKES DARK BRUNET

The warmest in the palette.

For brunettes and brown-haired women with dark brown eyes. Also can be mixed with lighter shades to create accents and shadows.

Nº 3

HANAFY EYELID PIGMENT LINE



CHARCOAL N°6

SMOKY GRAY

Can be used for any technique.

For cool eyes.

N° 6



DEEP BLACK N°7

DEEP BLACK

Blacker than black,
doesn't turn blue.

For lash enhancement
and winged eyeliner.

N° 7



BLACK ROSE N°8

PURPLE

Eggplant colour. Can be used
for any technique.

For brown and green eyes.

N° 8



RUSSIAN FOREST N°9

GREEN SHADE

Bright, decorative.

Eyelid shading for brown and
green eyes.

N° 9

HANAFY EYELID AND BROW PIGMENT LINE

by Olga Kostinetskaya



EYES N°1

YELLOW BASED MEDIUM BROWN SHADE

Very warm.

Suitable for working with light-shaded eyes.

N° 1



EYES N°2

RED BASED MEDIUM BROWN SHADE

Suitable for clients with an iris varying from green to chocolate colour. For eyelid skin with large amounts of melanin.

N° 2



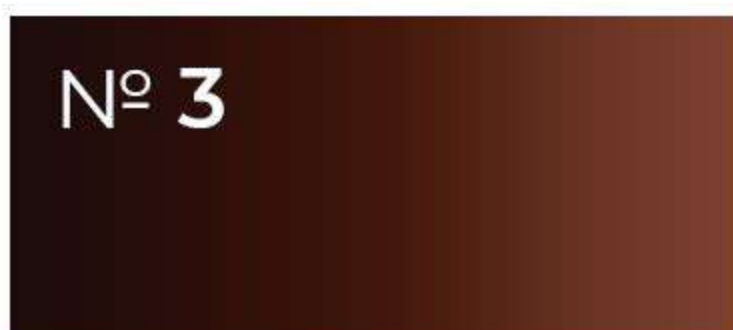
EYES N°3

RED BASED DEEP BROWN SHADE

Very attractive. Mainly used to create deep shading.

Suitable for light and dark eyes.

N° 3



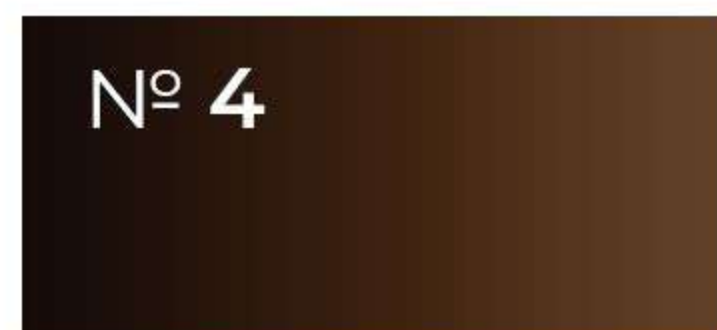
EYES N°4

RED BASED BLACKENED BROWN SHADE

The darkest in the set.

Suitable for light eyes as an alternative to black and gray.

N° 4



HANAFY AREOLA PIGMENT LINE

by Irina Maximova



AREOLA N°1

BEIGE PINK PIGMENT

One of the most popular shades for areolas.

For Slavic-type skin.

N° 1



AREOLA N°2

WARM SHADE FOR AREOLAS

Also can be used to cover vitiligo on Fitzpatrick skin types 4-5.

N° 2



AREOLA N°3

MEDIUM BROWN PIGMENT TONE FOR AREOLAS

Also can be used to cover vitiligo on Fitzpatrick skin types 3-4.

N° 3



AREOLA N°4

WARM TONE FOR THE AREOLAS, DARKER THAN THE AREOLA N°3 SHADE

Applicable for camouflage of vitiligo, scars and areolas dermopigmentation on Fitzpatrick skin types 4-5. Suitable for detailed work during the areola reconstruction.

N° 4



AREOLA N°5

RED BASED WARM DARK TONE

Can be used both separately and for detailed work during the areola reconstruction.

N° 5

HANAFY AREOLA PIGMENT LINE (addition)

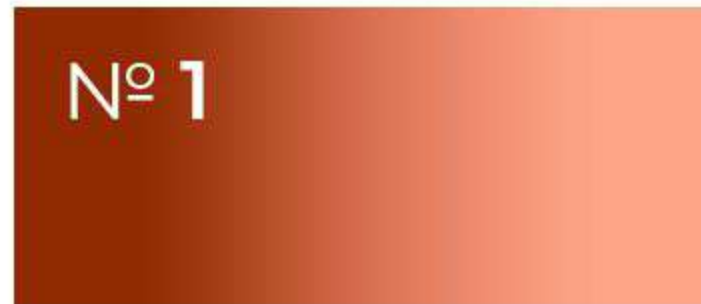
by Pavel Somov



AREOLA PRO N°1

**A WARM PEACHY PINK
COLOUR ON A RED BASE**

Suitable for mixing with pigments N°1 and N°2 from the Areola by Irina Maximova set.



AREOLA PRO N°2

**WARM SANDY ORANGE
COLOUR ON A YELLOW BASE**

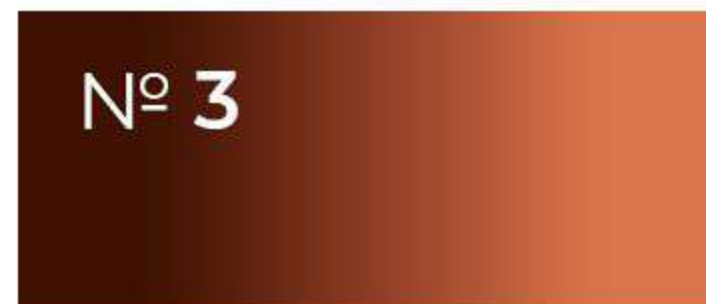
Suitable for mixing with pigments N°3 and N°4 from the Areola by Irina Maximova set.



AREOLA PRO N°3

**DARK RED-BROWN
COLOUR ON A RED BASE**

For camouflage of scars after mammoplasty, areola colour correction for dark types of skin. On its own, as a primary areola colour for dark types of skin. For emphasizing dark areas when simulating the areola - to give volume and realism to the image.



HANAFY CAMOUFLAGE PIGMENT LINE

by Irina Maximova



CAMOUFLAGE N°1

THE LIGHTEST CAMOUFLAGE PIGMENT FOR COOL TONED SKIN (FITZPATRICK SKIN TYPES 1-2)

Suitable for correction of scars and variously pigmented striae. Can be used to lighten the upper lip to give it more volume visually (lip light effect).

N° 1



CAMOUFLAGE N°2

LIGHT SHADE FOR A WARMER SKIN TONE

Correction of scars and variously pigmented striae. Can be used to lighten the upper lip to give it more volume visually (lip light effect).

N° 2



CAMOUFLAGE N°3

LIGHT PINK SHADE

Can be used on areolas, also good at adjusting green shades.

N° 3



CAMOUFLAGE N°4

WARM BEIGE SHADE FOR FITZPATRICK SKIN TYPES 3-4

For coverage of vitiligo and various pigmentation. For scars correction and areolas camouflage.

N° 4



CAMOUFLAGE N°5

COOL BEIGE SHADE FOR FITZPATRICK SKIN TYPES 3-4

Vitiligo and areolas camouflage, correction of various pigmentation and scars.

N° 5



CAMOUFLAGE N°6

WHITE COLOUR

Suitable for lips volumizing and retouch; can be used to correct skin pigmentations and dermopigmentation of areolas.

N° 6

HANAFY CORRECTOR LINE + THINNER



CORRECTOR N°1

RICH ORANGE SHADE

Suitable for eyebrows and lips. Warms up cold pigments and overlaps low-quality permanent makeup.

N° 1



CORRECTOR N°2

YELLOW-ORANGE SHADE

Lightens and neutralizes lilac and purple colours. Covers low-quality eyebrow permanent makeup. Suitable for work with dark ethnic lips.

N° 2



CORRECTOR N°3

OLIVE SHADE

Neutralizes pink, salmon and red colours. Can be used as a base for the main colour as well as independently.

Suitable for use on the eyelids.

N° 3



THINNER

HANAFY PIGMENT THINNER

Universal thinner used for reducing colour concentration. It also serves for creating shading effects on eyebrows, lips and eyelids. Applicable for making mixes.