



# Certificate of Analysis

QA SAMPLE - INFORMATIONAL ONLY

1 of 3

ICAL ID: 20230912-067  
Sample: CA230912-023-057  
Strawberry Lemonade  
Strain: Strawberry Lemonade  
Category: Concentrates & Extracts  
Type: Distillate

THG LLC  
Lic. #  
NA  
San Diego, CA 92121  
Lic. #

Batch#:   
Batch Size Collected:   
Total Batch Size:   
Collected: 09/14/2023; Received: 09/14/2023  
Completed: 09/14/2023

Moisture <b>NT</b>	Total THC <b>0.18%</b>	Total CBD <b>ND</b>	Total Cannabinoids <b>75.29%</b>	Total Terpenes <b>NT</b>
Water Activity <b>NT</b>				

Summary	SOP Used	Date Tested	
Batch	POT-PREP-001	09/13/2023	Pass
Cannabinoids	HM-PREP-001	09/13/2023	Complete
Heavy Metals	PESTMICO-LC-PREP-001 /	09/13/2023	Pass
Pesticides	PEST-GC-PREP-001		Pass



Scan to see results

## Cannabinoid Profile

Analyte	LOQ (mg/g)	LOD (mg/g)	%	mg/g	Analyte	LOQ (mg/g)	LOD (mg/g)	%	mg/g
THCa	0.3680	0.0924	ND	ND	CBGa	0.3965	0.1322	ND	ND
Δ9-THC	0.3680	0.1024	ND	ND	CBG	0.3920	0.1307	ND	ND
Δ8-THC	0.3680	0.0506	0.18	1.8	CBN	0.3680	0.0780	0.12	1.2
THCV	0.3680	0.0423	ND	ND	9R-HHC	0.7752	0.0248	49.26	492.6
CBDa	0.3680	0.0951	ND	ND	9S-HHC	0.7983	0.0420	25.73	257.3
CBD	0.3680	0.0815	ND	ND	<b>Total THC</b>			<b>0.18</b>	<b>1.76</b>
CBDV	0.3680	0.0421	ND	ND	<b>Total CBD</b>			<b>ND</b>	<b>ND</b>
CBC	0.4549	0.1516	ND	ND	<b>Total</b>			<b>75.29</b>	<b>752.89</b>

Total THC=THCa \* 0.877 + d9-THC + d8-THC; Total CBD = CBDa \* 0.877 + CBD. LOD= Limit of Detection, LOQ= Limit of Quantitation, ND= Not Detected, NR= Not Reported. Potency is reported on a dry weight basis. Instrumentation and analysis SOPs used: Cannabinoids:UHPLC-DAD(POT-INST-005),Moisture:Moisture Analyzer(MOISTURE-001),Water Activity:Water Activity Meter(WA-INST-002), Foreign Material:Microscope(FOREIGN-001). Density measured at 19-24 °C, Water Activity measured at 0-90% RH. All QA submitted by the client, All CA State Compliance sampled using SAMPL-SOP-001.

## Terpene Profile

Analyte	LOQ (mg/g)	LOD (mg/g)	%	mg/g	Analyte	LOQ (mg/g)	LOD (mg/g)	%	mg/g
---------	------------	------------	---	------	---------	------------	------------	---	------

NR= Not Reported (no analysis was performed), ND= Not Detected (the concentration is less than the Limit of Detection (LOD)). Analytical instrumentation used: HS-GC-MS; samples analyzed according to SOP TERP-INST-003.



Infinite Chemical Analysis Labs  
8312 Miramar Mall  
San Diego, CA  
(858) 623-2740  
www.infiniteCAL.com  
Lic# C8-0000047-LIC

*Josh M Swider*

Josh Swider  
Lab Director, Managing Partner  
09/14/2023

Confident Cannabis  
All Rights Reserved  
support@confidentcannabis.com  
(866) 506-5866  
www.confidentcannabis.com



This product has been tested by Infinite Chemical Analysis, LLC using valid testing methodologies and a quality system as required by state law. All LQC samples were performed and met the prescribed acceptance criteria in 16 CCR section 15730, pursuant to 16 CCR section 15726(e)(13). Values reported relate only to the product tested. Infinite Chemical Analysis, LLC makes no claims as to the efficacy, safety or other risks associated with any detected or non-detected levels of any compounds reported herein. This Certificate shall not be reproduced except in full, without the written approval of Infinite Chemical Analysis, LLC.



# Certificate of Analysis

QA SAMPLE - INFORMATIONAL ONLY

2 of 3

ICAL ID: 20230912-067  
Sample: CA230912-023-057  
Strawberry Lemonade  
Strain: Strawberry Lemonade  
Category: Concentrates & Extracts  
Type: Distillate

THG LLC  
Lic. #  
NA  
San Diego, CA 92121  
Lic. #

Batch#:   
Batch Size Collected:   
Total Batch Size:   
Collected: 09/14/2023; Received: 09/14/2023  
Completed: 09/14/2023

## Residual Solvent Analysis

Category 1	LOQ	LOD	Limit	Status	Category 2	LOQ	LOD	Limit	Status	Category 2	LOQ	LOD	Limit	Status
------------	-----	-----	-------	--------	------------	-----	-----	-------	--------	------------	-----	-----	-------	--------

NR= Not Reported (no analysis was performed), ND= Not Detected (the concentration is less then the Limit of Detection (LOD)). Analytical instrumentation used: HS-GC-MS; samples analyzed according to SOP RS-INST-003.

## Heavy Metal Screening

		LOQ	LOD	Limit	Status
	µg/g	µg/g	µg/g	µg/g	
Arsenic	ND	0.009	0.003	0.2	Pass
Cadmium	ND	0.002	0.001	0.2	Pass
Lead	ND	0.004	0.001	0.5	Pass
Mercury	ND	0.014	0.005	0.1	Pass

NR= Not Reported (no analysis was performed), ND= Not Detected (the concentration is less then the Limit of Detection (LOD)). Analytical instrumentation used: ICP-MS; samples analyzed according to SOP HM-INST-003.

## Microbiological Screening

	Limit	Result	Status
--	-------	--------	--------

ND=Not Detected. Analytical instrumentation used:qPCR; samples analyzed according to SOP MICRO-INST-001.



Infinite Chemical Analysis Labs  
8312 Miramar Mall  
San Diego, CA  
(858) 623-2740  
www.infiniteCAL.com  
Lic# C8-0000047-LIC

*Josh M Swider*

Josh Swider  
Lab Director, Managing Partner  
09/14/2023

Confident Cannabis  
All Rights Reserved  
support@confidentcannabis.com  
(866) 506-5866  
www.confidentcannabis.com



This product has been tested by Infinite Chemical Analysis, LLC using valid testing methodologies and a quality system as required by state law. All LQC samples were performed and met the prescribed acceptance criteria in 16 CCR section 15730, pursuant to 16 CCR section 15726(e)(13). Values reported relate only to the product tested. Infinite Chemical Analysis, LLC makes no claims as to the efficacy, safety or other risks associated with any detected or non-detected levels of any compounds reported herein. This Certificate shall not be reproduced except in full, without the written approval of Infinite Chemical Analysis, LLC.



# Certificate of Analysis

QA SAMPLE - INFORMATIONAL ONLY

3 of 3

ICAL ID: 20230912-067  
Sample: CA230912-023-057  
Strawberry Lemonade  
Strain: Strawberry Lemonade  
Category: Concentrates & Extracts  
Type: Distillate

THG LLC  
Lic. #  
NA  
San Diego, CA 92121  
Lic. #

Batch#:   
Batch Size Collected:   
Total Batch Size:   
Collected: 09/14/2023; Received: 09/14/2023  
Completed: 09/14/2023

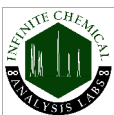
## Chemical Residue Screening

Category 1	LOQ	LOD	Status	Mycotoxins	LOQ	LOD	Limit	Status
	µg/g	µg/g	µg/g					
Aldicarb	ND	0.030	0.008	Pass				
Carbofuran	ND	0.030	0.005	Pass				
Chlordane	ND	0.075	0.025	Pass				
Chlorfenapyr	ND	0.075	0.025	Pass				
Chlorpyrifos	ND	0.046	0.015	Pass				
Coumaphos	ND	0.030	0.004	Pass				
Daminozide	ND	0.053	0.018	Pass				
Dichlorvos	ND	0.055	0.018	Pass				
Dimethoate	ND	0.030	0.006	Pass				
Ethoprophos	ND	0.030	0.006	Pass				
Etofenprox	ND	0.030	0.004	Pass				
Fenoxycarb	ND	0.030	0.004	Pass				
Fipronil	ND	0.050	0.017	Pass				
Imazalil	ND	0.030	0.009	Pass				
Methiocarb	ND	0.030	0.002	Pass				
Mevinphos	ND	0.030	0.008	Pass				
Paclbutrazol	ND	0.030	0.009	Pass				
Parathion Methyl	ND	0.024	0.008	Pass				
Propoxur	ND	0.030	0.008	Pass				
Spiroxamine	ND	0.030	0.006	Pass				
Thiacloprid	ND	0.030	0.005	Pass				

Category 2	LOQ	LOD	Limit	Status	Category 2	LOQ	LOD	Limit	Status		
	µg/g	µg/g	µg/g	µg/g		µg/g	µg/g	µg/g	µg/g		
Abamectin	ND	0.099	0.033	0.1	Pass	Kresoxim Methyl	ND	0.030	0.007	0.1	Pass
Acephate	ND	0.030	0.007	0.1	Pass	Malathion	ND	0.030	0.003	0.5	Pass
Acequinocyl	ND	0.046	0.015	0.1	Pass	Metalaxyl	ND	0.030	0.005	2	Pass
Acetamiprid	ND	0.030	0.005	0.1	Pass	Methomyl	ND	0.030	0.009	1	Pass
Azoxystrobin	ND	0.030	0.005	0.1	Pass	Myclobutanil	ND	0.030	0.007	0.1	Pass
Bifenazate	ND	0.030	0.007	0.1	Pass	Naled	ND	0.030	0.008	0.1	Pass
Bifenthrin	ND	0.030	0.004	3	Pass	Oxamyl	ND	0.030	0.007	0.5	Pass
Boscalid	ND	0.030	0.008	0.1	Pass	Pentachloronitrobenzene	ND	0.054	0.018	0.1	Pass
Captan	ND	0.358	0.120	0.7	Pass	Permethrin	ND	0.030	0.002	0.5	Pass
Carbaryl	ND	0.030	0.006	0.5	Pass	Phosmet	ND	0.030	0.005	0.1	Pass
Chlorantraniliprole	ND	0.030	0.009	10	Pass	Piperonyl Butoxide	ND	0.030	0.003	3	Pass
Clofentezine	ND	0.030	0.002	0.1	Pass	Prallethrin	ND	0.071	0.023	0.1	Pass
Cyfluthrin	ND	0.056	0.019	2	Pass	Propiconazole	ND	0.030	0.009	0.1	Pass
Cypermethrin	ND	0.181	0.060	1	Pass	Pyrethrins	ND	0.030	0.003	0.5	Pass
Diazinon	ND	0.030	0.005	0.1	Pass	Pyridaben	ND	0.030	0.002	0.1	Pass
Dimethomorph	ND	0.030	0.005	2	Pass	Spinetoram	ND	0.030	0.001	0.1	Pass
Etoxazole	ND	0.030	0.004	0.1	Pass	Spinosad	ND	0.030	0.001	0.1	Pass
Fenhexamid	ND	0.034	0.011	0.1	Pass	Spiromesifen	ND	0.030	0.009	0.1	Pass
Fenpyroximate	ND	0.030	0.004	0.1	Pass	Spirotetramat	ND	0.030	0.008	0.1	Pass
Flonicamid	ND	0.035	0.012	0.1	Pass	Tebuconazole	ND	0.030	0.006	0.1	Pass
Fludioxonil	ND	0.036	0.012	0.1	Pass	Thiamethoxam	ND	0.030	0.008	5	Pass
Hexythiazox	ND	0.030	0.001	0.1	Pass	Trifloxystrobin	ND	0.030	0.003	0.1	Pass
Imidacloprid	ND	0.033	0.011	5	Pass						

Other Analyte(s): Est. HHCP: 1.02%

NR= Not Reported (no analysis was performed), ND= Not Detected (the concentration is less than the Limit of Detection (LOD)). Analytical instrumentation used: LC-MS-MS & GC-MS-MS; samples analyzed according to SOPs PESTMYCO-LC-INST-004 and PEST-GC-INST-003.



Infinite Chemical Analysis Labs  
8312 Miramar Mall  
San Diego, CA  
(858) 623-2740  
www.infiniteCAL.com  
Lic# C8-000047-LIC

*Josh M Swider*

Josh Swider  
Lab Director, Managing Partner  
09/14/2023

Confident Cannabis  
All Rights Reserved  
support@confidentcannabis.com  
(866) 506-5866  
www.confidentcannabis.com



This product has been tested by Infinite Chemical Analysis, LLC using valid testing methodologies and a quality system as required by state law. All LQC samples were performed and met the prescribed acceptance criteria in 16 CCR section 15730, pursuant to 16 CCR section 15726(e)(13). Values reported relate only to the product tested. Infinite Chemical Analysis, LLC makes no claims as to the efficacy, safety or other risks associated with any detected or non-detected levels of any compounds reported herein. This Certificate shall not be reproduced except in full, without the written approval of Infinite Chemical Analysis, LLC.