



The Dopest

Sample 355-033122-098

The Dopest Pre-roll HHC Strawberry Cough

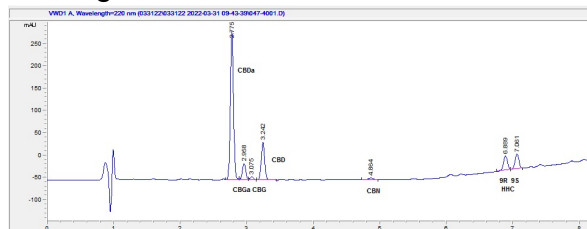
Sample Submitted: 03-31-2022; Report Date: 04-03-2022

nullSample Unit Size: 2.00 g

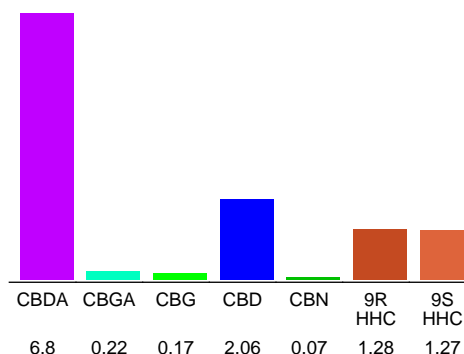
The Dopest Pre-roll HHC Strawberry Cough

Plant Material

Chromatogram



Cannabinoid Profile



Cannabinoid Profile by HPLC

0.00%
Calculated THC Yield

8.02%
Calculated CBD Yield

11.87%
Total Cannabinoids

Cannabinoid	% wt	mg/unit
CBDA	6.8	136.0
CBGA	0.22	4.4
CBG	0.17	3.4
CBD	2.06	41.2
CBN	0.07	1.4
9R HHC	1.28	25.6
9S HHC	1.27	25.4
Total Cannabinoids	11.87	237.4
Calculated THC Yield	0.00	0.00
Calculated CBD Yield	8.02	160.47

Calculated Maximum THC Yield = THC + 0.877 * THCA

Calculated Maximum CBD Yield = CBD + 0.877 * CBDA

Marin Analytics, LLC
250 Bel Marin Keys Blvd, Suite D4
Novato, CA 94949

415-936-6477 / sarabiancalana1@gmail.com

Sara Biancalana
Chief Scientist

This sample has been tested by Marin Analytics, LLC using valid testing methodologies and a quality system. Values reported relate only to the sample tested. Marin Analytics, LLC makes no claims as to the efficacy, safety or other risks associated with any detected or non-detected levels of any compounds reported herein. This Certificate shall not be reproduced except in full, without the written approval of Marin Analytics, LLC.