

FLUA®



SURROUND R3 2.0

CCC CE RoHS

High visual comfort by unique design of cover emitting light from side for both directional and decorative effect. For light emission from one hole and two holes, there are optional stainless steel covers available which are stronger and suitable for installation on paths or roads exposed to treading and pressing force.

Designer	FLUA
Sales status	On Sale
Product classification	Exterior
Model	667717A

WWW.FLUA.COM

Installation information

Area	Ground
Method	Recessed
Cut hole size	Φ 70mm
Embedded height	/

Technical general

System power	2.6W
Flux	45LM
Beam angle	R
Material	SSS 316
Appearance color	WSG
Size	Φ 55*65.8mm
Adjustable angle	Not available
Ingress protection	IP67
Input voltage	100-240VAC
Electrical level	Class I

Electrical parameters

Driver brand	FLUA
Driver type	PR-EL03060B4
Electrical installation	Build in

Light source parameters

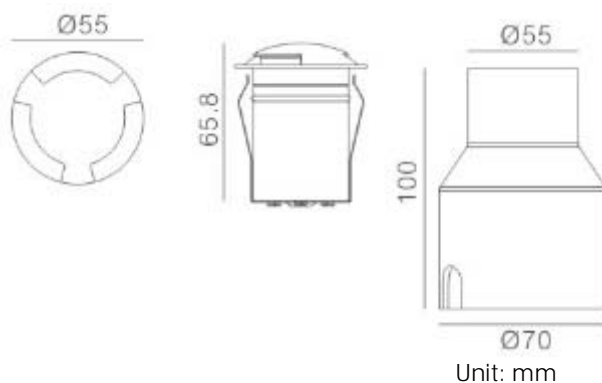
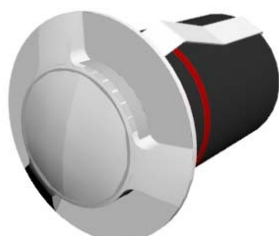
Brand	OSRAM
Type	CSHPM1.EM 1P
Power	1.8W
Light color	WW
Color temperature	3000K
CRI	80

Other options

Beam angle	/
Color temperature	/
Color	/
Appearance color	/

3D module

Line drawing



Instructions

