

FLUA®



LIGHTBAR ONE



This series is simple circular in shape of tube. It feature a powerful rotatable function .Vertical poles rotatable 90 degrees, the light-emitting surface can also rotate 350 degrees. The other lamp is easy to install, can be used as a mirror light.

Designer	WANG KANG HUA
Sales status	On Sale
Product classification	Interior
Model	421114A

Installation information

Area	Wall
Method	Surface Mounted
Cut hole size	/
Embedded height	/

Technical general

System power	11.5W	
Flux	702lm	
Beam angle	L	
Material	Aluminum	
Appearance color	PAW	
Size	540*165*27mm	
Adjustable angle	Not available	
Ingress protection	IP20	
Input voltage	220-240VAC	50/60Hz
Electrical level	Class I	

Electrical parameters

Driver brand	KEGU
Driver type	KEDH009S0500NR13A7
Electrical installation	Build in

Light source parameters

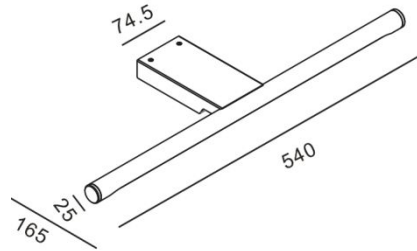
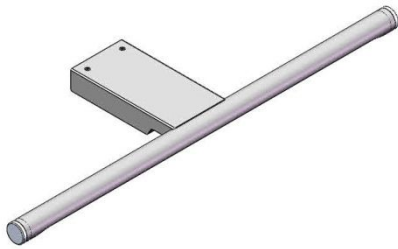
Brand	EDISON
Type	2835
Power	9.3W
Light color	WW
Color temperature	3000K
CRI	80

Other options

Beam angle	/
Color temperature	2700K 4000K 5000K
Color	/
Appearance color	PBK/PCS

3D module

Line drawing



Unit: mm

Instructions

