

# FLUA®



FORMULIA 2.0 550



---

Slim body, three lengths optional, can support multiple combinations of installation to play your imagination, be applied to a variety of regional.

---

Designer	WANG KANG HUA
Sales status	On Sale
Product classification	Interior
Model	307711A

---

[WWW.FLUA.COM](http://WWW.FLUA.COM)

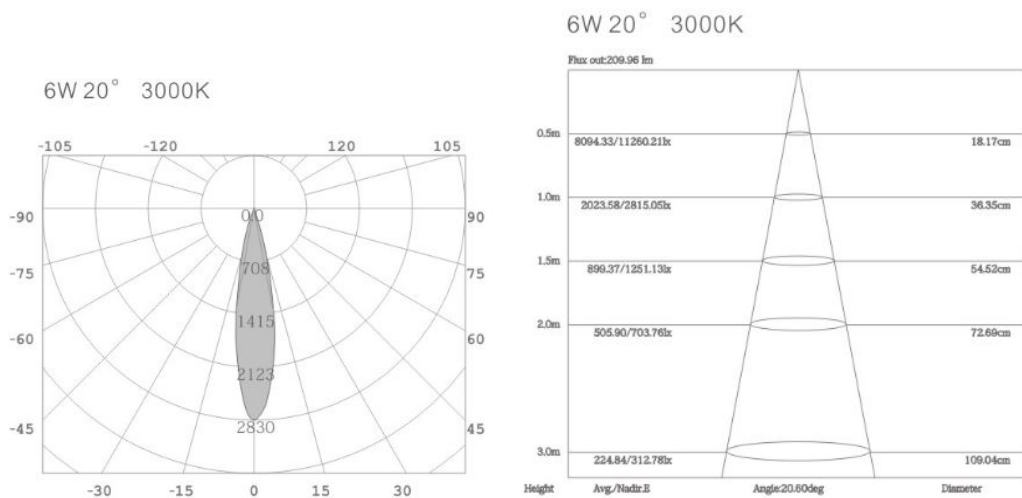
## Installation information

Area	Ceiling
Method	Suspended
Cut hole size	/
Embedded height	/

## Technical general

System power	7.1W	
Flux	446lm	
Beam angle	20°	
Material	Aluminum	
Appearance color	PAW	
Size	Φ 25*550mm	
Adjustable angle	Not available	
Ingress protection	IP20	
Input voltage	220-240VAC	50/60Hz
Electrical level	Class I	

## Photometric graph



## Electrical parameters

Driver brand	FLUA
Driver type	FLUA006H0500NCMA
Electrical installation	Build in

---

## Light source parameters

Brand	CREE
Type	XHP35A
Power	6W
Light color	WW
Color temperature	3000K
CRI	90

---

## Other options

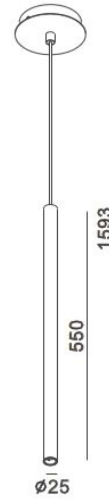
Beam angle	/
Color temperature	2700K 4000K 5000K
Color	/
Appearance color	PAB

---

# FLUA®

3D module

Line drawing



Unit: mm

## Instructions

