

# FLUA®



SIMPHONIA DI



---

SIMPHONIA is a new concept design in FLUA range of products. This splendid luminaire creates beautiful lighting patterns on the wall. Can match any kind of design requirement. Thanks to IP 65, SIMPHONIA can be used for outdoor usage. Thanks to special lens, the rays are becoming extremely paralleled.

---

Designer	FLUA
Sales status	On Sale
Product classification	Exterior
Model	432717A

---

[WWW.FLUA.COM](http://WWW.FLUA.COM)

## Installation information

Area	Wall
Method	Surface mounted
Cut hole size	/
Embedded height	/

---

## Technical general

System power	5.7W
Flux	41lm
Beam angle	R
Material	Aluminum,
Appearance color	PGY
Size	100*100*85mm
Adjustable angle	Not available
Ingress protection	IP65
Input voltage	100-240VAC
Electrical level	Class I

## Electrical parameters

Driver brand	FLUA
Driver type	FLMN6W700
Electrical installation	Build in

---

## Light source parameters

Brand	OSRAM
Type	GW CSHPM1.EM
Power	/
Light color	WW
Color temperature	3000K
CRI	80

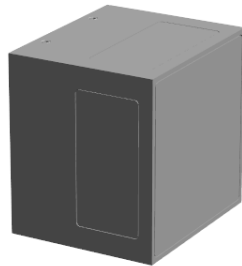
---

## Other options

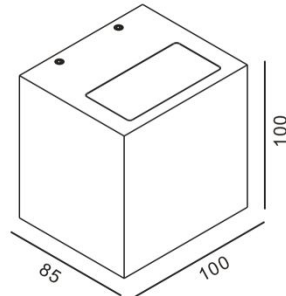
Beam angle	/
Color temperature	/
Color	/
Appearance color	/

---

## 3D module



## Line drawing



Unit: mm

## Instructions

